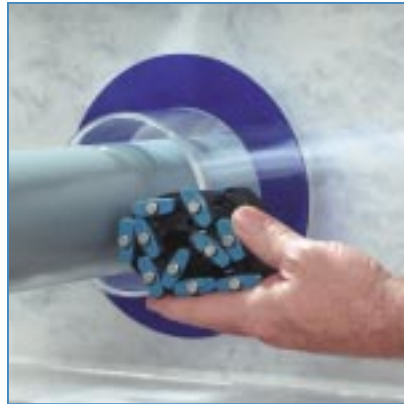


PEN-SEAL

Easy Installation



1. Properly select the size of the PEN-SEAL required to seal the penetration using the Sizing Charts on pages 4 through 7.



2. Wrap the PEN-SEAL around the pipe and connect the ends.



3. Slide the PEN-SEAL into position.



4. Tighten each bolt on each pressure plate about 2-3 turns, going around the pipe (do not cross-tighten bolts) until a proper seal is formed. A socket or offset wrench for 5/16, 1/2, 3/8, 9/16, 3/4, or 1-13/16" bolts will handle all installations.