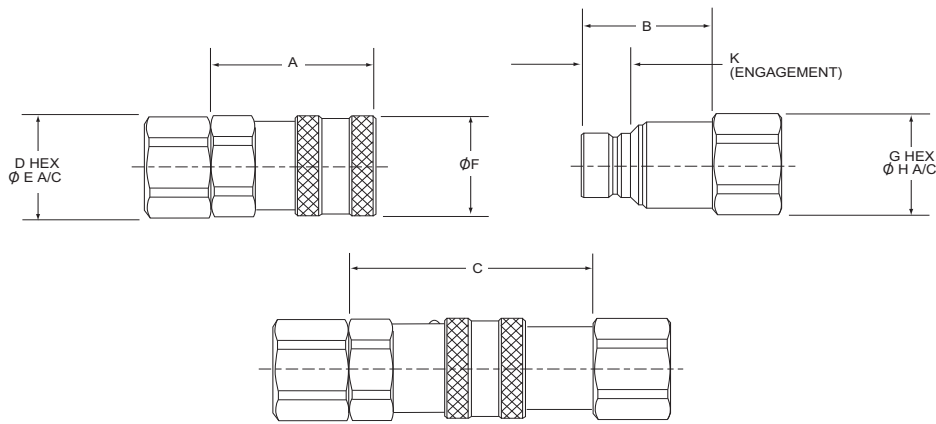


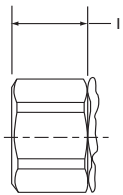
74 SERIES DIMENSIONAL INFORMATION



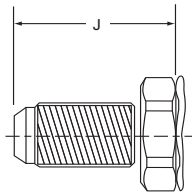
SIZE	A	B	C	D	E	F	G	H	K
1/4" (mm)	1.80 45.72	1.26 32.00	2.63 66.80	1.00 25.40	1.10 27.94	1.12 28.45	0.81 20.57	0.89 22.61	0.43 10.92
3/8" (mm)	1.92 48.77	1.55 39.37	2.86 72.64	1.00 25.40	1.10 27.94	1.20 30.48	0.94 23.88	1.03 26.16	0.61 15.49
1/2" (mm)	2.32 58.93	1.84 46.74	3.47 88.14	1.38 35.05	1.51 38.35	1.50 38.10	1.38 35.05	1.51 38.35	0.68 17.27
5/8" (mm)	2.07 52.58	1.98 50.29	3.36 85.34	1.50 38.10	1.65 41.91	1.69 42.93	1.50 38.10	1.65 41.91	0.69 17.53
3/4" (mm)	3.08 78.23	2.27 57.66	4.47 113.54	1.75 44.45	1.93 49.02	1.81 45.97	1.63 41.40	1.80 45.72	0.88 22.35
1" (mm)	2.93 74.42	2.55 64.77	4.55 115.57	2.00 50.80	2.20 55.88	2.25 57.15	1.88 47.75	2.06 52.32	0.93 23.62

OPTIONAL END FITTING DIMENSIONS

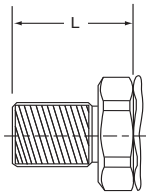
	Coupler	Nipple		Coupler	Nipple
6-8F or RP (mm)	0.86 21.84	1.00 25.40	8-12EF (mm)	1.02 25.91	1.10 27.94
6-8EF (mm)	0.61 15.49	0.80 20.32	10-12F (mm)	1.10 27.94	1.09 27.69
8-10EF (mm)	0.89 22.61	0.97 24.64	10-12EF (mm)	1.10 27.94	1.09 27.69
8-10EM (mm)	1.18 29.97	1.20 30.48	10-12RP (mm)	1.04 26.42	1.03 26.16
8-10EB (mm)	2.02 51.31	2.04 51.82	10-12EM (mm)	1.39 35.31	1.39 35.31
8-10ORSB (mm)	1.70 43.18	1.71 43.43	10-12EB (mm)	2.28 57.91	2.28 57.91



F, EF & RP
END FITTINGS



EM & EB
END FITTINGS



ORSB
END FITTING

BASIC END FITTING DIMENSIONS

	1/4"		3/8"		1/2"		5/8"		3/4"		1"	
	Coupler	Nipple	Coupler	Nipple	Coupler	Nipple	Coupler	Nipple	Coupler	Nipple	Coupler	Nipple
-F (mm)	0.44 11.18	0.58 14.73	0.52 13.21	0.67 17.02	0.96 24.38	1.03 26.16			0.53 13.46	1.05 26.67	1.21 30.73	1.04 26.42
-EF (mm)	0.44 11.18	0.58 14.73	0.52 13.21	0.67 17.02	0.72 18.29	0.83 21.08			0.53 13.46	1.05 26.67	1.19 30.23	1.04 26.42
-RP (mm)	0.44 11.18	0.58 14.73	0.52 13.21	0.67 17.02	0.90 22.86	0.96 24.38			0.53 13.46	1.05 26.67	1.21 30.73	1.04 26.42
-EM (mm)	1.05 26.67	1.03 26.16			1.09 27.69	1.09 27.69	1.26 32.00	1.26 32.00	1.34 34.04	1.32 33.53	1.51 38.35	1.58 40.13
-EB (mm)	1.73 43.94	1.71 43.43			1.90 48.26	1.90 48.26	2.11 53.59	2.11 53.59	2.23 56.64	2.22 56.39	2.38 60.45	2.32 58.93

All decimal dimensions are +.030 in. (0.76 mm)