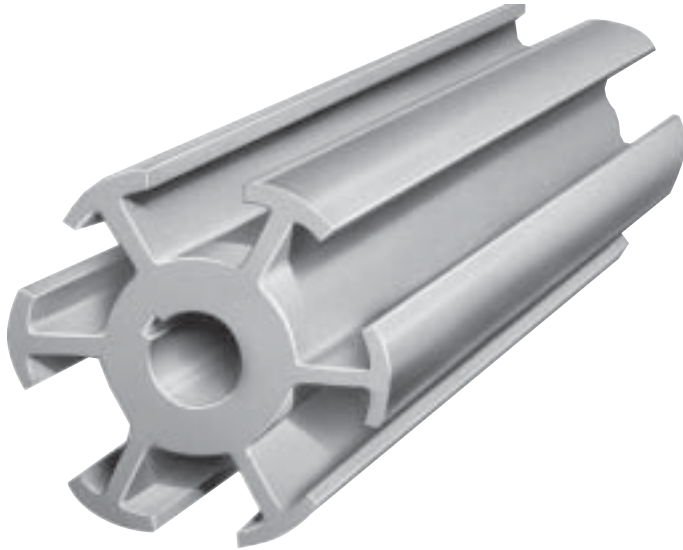
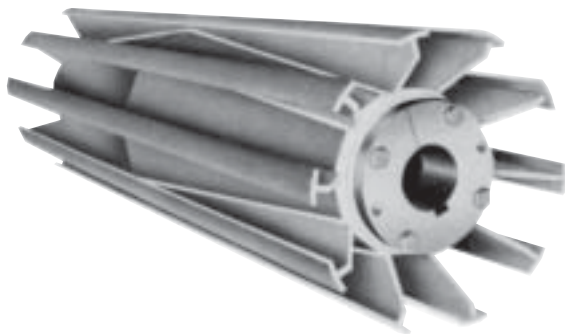


LIGHTWEIGHT SLAT



Occasionally the need arises for small diameter slat type pulleys which are used in small unloading and loading conveyors. VAN GORP has designed a light weight slat pulley in 4" - 5 1/8" - 6" diameters. Since the diameter is so small, it is impossible to use gussets in this pulley, but the individual slat wing principle is applied. If an excessive amount of moist, sticky material such as clay or bulk fertilizer falls on the pulley and belt, it is possible to stop the conveyor and then clean the material out of the wing openings. This pulley is offered with solid bore hubs in the 4", 5 1/8" and 6" diameters and a XT15 hub in the 6" diameter. Solid bores have one key-way and two set screws in each hub.

Extra Heavy Duty Wing Pulleys



Available on XT®,
Tapered Bore or
Q-D® Hubs. See
Page 32 for
Bushing
Locations

RUGGED FOR LONG LIFE — Built for the stress and strain of big loads...or unusually long, large conveyor systems. Designed after the SNAP-BACK® and TURN CLEAN™ wing pulleys. All welded steel construction. Outer bars have a long radius surface for maximum traction and minimum belt wear. All pulleys are jig welded, and accurate concentricity is assured because the contact bar is hydraulically pressed against the exterior wing edge and then welded together. Individual gussets are welded continuously to each wing and the hub forming a strong double-cone design.