



BAND-IT[®]

THE CLAMPING EXPERTS



**The World's Leader in
Quality Engineered
Band Clamping Systems**



Product Catalog



Sections color coded for your convenience.

	Product Systems	Page
Band and Buckle Systems	Ultra-Lok® Band and Buckle Systems	10
	BAND-FAST™ Precut and Assembled	11
	COLOR-IT™	12
	BAND-IT® Band and Buckles	13
	Hand Tools for Band and Buckle	13
	VALU-STRAP™ and Clips	14
	Galvanized Carbon Steel Band and Buckles	14-15
	Corrosion Resistant Stainless Steel Bands	15-16
	Scru-Lokt Buckles	15
	All Purpose Band	16
	Q-Band™ and Q-Clip™	16
	Pipe Patches	16
	Kits	17
Brack-Its and Mounting Hardware	Sign Mounting Brack-Its	18
	Mounting Plates	19
	BAND-IT® Bolt/Clamps	19
	Signal Mounts	19
Identification Systems	ID Tagging Systems	20-21
Stainless Steel Ties	Tie-Lok® Ties	23
	Ultra-Lok® Ties	24
	Ball-Lok Ties	24
	Multi-Lok Ties	24
	BAND-IT® Ties	25
	Self-Lok® Ties	25
	Band-Lok® Ties	25
	Engineered Applications	26
	IT Series Heavy Duty Pneumatic Production Tools	27
Tie-Dex® Systems	28-29	
Preformed Clamping Systems	SET 9000™ Electronic Clamp Installation Tool	31
	Ultra-Lok® Clamp Systems	32
	Junior® Smooth ID Clamp Systems	33-34
	Universal Clamps	34
	Center Punch Clamp Systems	35
	BAND-FAST™ Open End with Center Punch Clip	35
Adjustable Clamping Systems	Worm Gear Clamps	36
	Scru-Seal Clamping System	36
	Scru-Band Clamping System	36
Hose Fittings	Tri-Lokt® Systems	37-38
	Swaged Hose Nipples	38
	Full Flow Hose Nipples	38
	Male Hose Nipples	38-39
	Hose Menders	39
Tools	Hand Tools	40
	Power Tools	41
Technical Data	Patents, Trademarks, Codes, Approvals	42
	Abbreviations and Definitions	43
	Metals Data	44-45
	Index	46-47

Applications

Pole & Signal Mounting



Traffic Signals



Mast Arm Sign Installation



Enclosure Mounting



Pole Fastening

Hose Clamping & Assembly



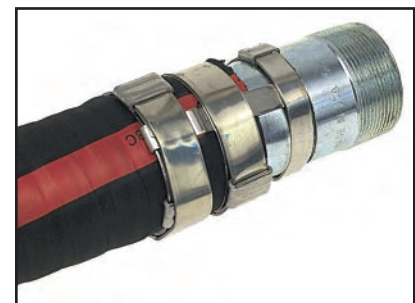
Chemical Transport



Agriculture



Dairies and Wineries



Tri-Lokt Assembly



Applications

Construction and Mining



Pulp and Paper



Hose Shielding



Cooling Tower Elements



Underground Cables

Transportation



Exhaust Pipe Heat Shield



Side Air Bag Bracket



Constant Velocity Boots



Charge Air Cooling Assembly



Exhaust Gas Re-circulation



Heat and Sound Shielding



Hybrid Harness

Applications

Cable TV and Telecommunications



Cell Tower



Telecommunications

Aerospace

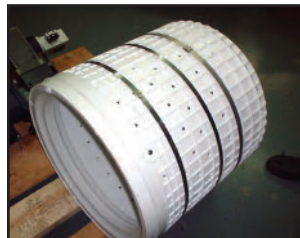
Shield Termination Assembly



General Fastening



Brake Line



Washer Drum



Irrigation Systems



Tube and Hose Bundling



Agriculture



Applications

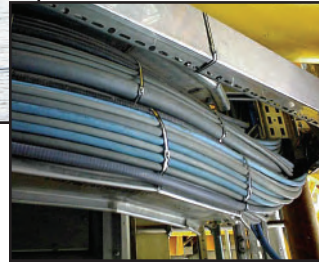
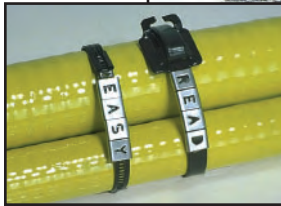
Ship Building



Identification Systems



Cable Bundling



Petrochemical

Identification



Down Hole Instrumentation



Insulation

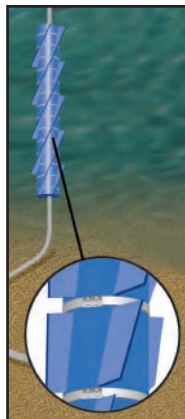


Hose

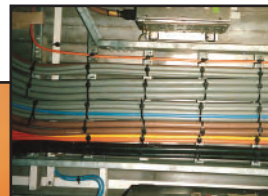


Marine and Subsea

Strake



Marine Cable Bundling



Piling Shields



Band and Buckle Systems

- High strength fastening and clamping.
- Wide variety of materials, widths and thicknesses.
- Can be formed to virtually any diameter and shape.

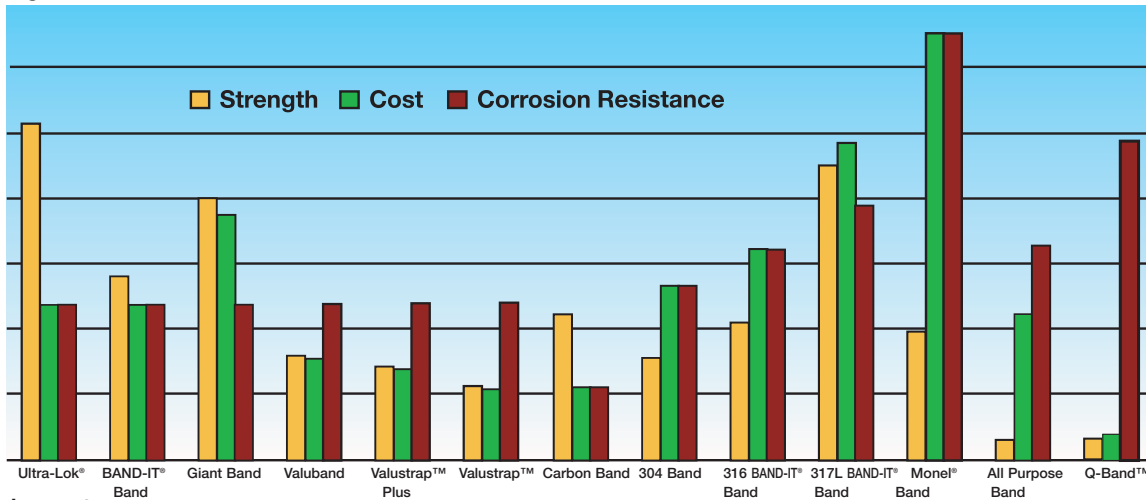


BAND-IT® Band



Ultra-Lok® Tote

Highest **Band Comparison Chart**



Lowest

NOTE: Comparisons for Strength and Cost are based on similar widths and thicknesses
This chart is for illustrative purposes only.

Ultra-Lok® Systems

- Apply four times faster than band and buckle with hand tools!
- Form band lock under full tension, meaning less slippage.
- Correct assembly guided by matching arrow indicators on band and buckle.
- Offers good resistance to oxidation and many moderate corrosive agents.
- 201 1/4 hard SS band provides greater material strength allowing tighter clamps and can be double wrapped for additional strength.
- 3/4" band available in plastic tote with buckle storage area, 1/2" band available in cardboard boxes.
- Application Tools: UL4000 Ultra-Lok® rechargeable portable tool and UL9010 Ultra-Lok® 110-volt AC, corded electric tool.



UL4000 Tool with Ultra-Lok® Band & Buckle

BAND-FAST™

- Ready to Use.
- Pre-cut and pre-assembled with a clip, buckle or seal.
- Saves up to 30% time and labor costs for large projects.
- Reduce material costs and scrap with pre-cut band lengths.
- Available in standard and custom sizes and materials.
- Now available with COLOR-IT™.
- Application Tools: C00169, C00369, C07569, and C40099.

COLOR-IT™

- Available in a variety of types and colors.
- Superior performance, UV resistance, and durability.



BAND-IT can match any color. Call for quote.



BAND-FAST™

MOST POPULAR



GENERAL USE

BAND-IT® Band

- 201 SS, bright annealed finish sets the standard with a combination of high strength and quality appearance.
- Offers good resistance to oxidation and many moderate corrosive agents.
- EASY SCALE - Patented imprint on the band to quickly determine band length without waste.
- Durable plastic tote dispensers available.
- Application Tools: C00169, C00369, C07569, C08569, and C40099.



BAND-IT® Tote



**BAND-IT®
EASY SCALE**

Giant Band

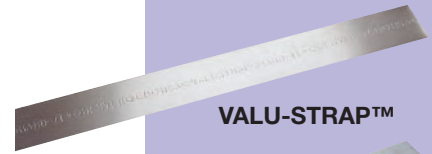
- The widest and thickest band provides maximum strength.
- Available in 201 SS bright or matte finish.
- Application Tools: C00369 for 3/4" band only and G40269.



Giant Band

VALU-STRAP™, VALU-STRAP Plus™, and Valuband

- Economical band suitable for light duty applications.
- Thickness: 0.015", 0.020", 0.025".
- May be 200 or 300 series SS, typically non-magnetic.
- Application Tools: C00169, C00369, C07569, C08569, and C40099.



VALU-STRAP™

Galvanized Carbon Steel Band

- Utilized mainly for low cost.
- Minimal corrosion resistance.
- Application Tools: C00169, C00369, C07569, C08569, and C40099.



**Galvanized Carbon
Steel Band**

304 Stainless Steel Band

- Economical band suitable for light duty applications in typical atmospheres.
- Application Tools: C00169, C00369, C07569, C08569, and C40099.



**316 Stainless Steel
Band**

316 Uncoated and Coated Stainless Steel Band

- Superior corrosion resistance in typical atmospheres and fresh water.
- Available with halogen free coating (PPA 571) for additional corrosion resistance and smoother edges.
- Application Tools for uncoated band: C00169, C00369, C07569, C08569, and C40099.
- Application Tools for coated band: C07569, C08569, and C40099.



Monel® 400 Band

317L Stainless Steel Band

- Superior corrosion resistance in industrial and marine atmospheres, salt water, and mild chemicals.
- Application Tools: C00169, C00369, and C40069.

Monel® 400 Band

- Superior corrosion resistance in marine, salt water, and harsh chemical environments.
- Application Tools: C00169, C00369, and C40069.

All Purpose Band

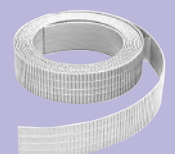
- Evenly spaced holes allow fastening with screw or nut and bolt.
- Uncoated or coated with halogen free coating (PPA 571).
- Easy to install with common hand tools.



All Purpose Band

Q-Band™

- Polypropylene band - ideal for hundreds of light duty applications.
- UV resistant.
- Can be tightened by hand or with easy-to-use Q-Band™ manual tool (Q72099).
- Reusable clamps.



Q70499 Q-Band™

CORROSION RESISTANT

SPECIAL PURPOSE



The Ultimate Clamping System



Ultra-Lok® Band and Buckle formed to a completed lock



1/2" Ultra-Lok® Band and Buckles



Ultra-Lok® Tote

Ultra-Lok® Band

Part No.	Material*	Band Width		Maximum Clamp Diameter				Band Length		Package Quantity	Package Weight	
		Inches	mm	Single Wrap In	mm	Double Wrap In	mm	In	mm		Lbs	Kg
UL1018**	201 SS	1/2	12.7	3	76	not suggested		18	457	50/box	4.1	1.9
UL1024**	201 SS	1/2	12.7	5	127	2.5	64	24	610	50/box	5.3	2.4
UL1028**	201 SS	1/2	12.7	6	152	3.0	76	28	711	50/box	6.4	2.9
UL1032**	201 SS	1/2	12.7	7	178	3.5	89	32	813	50/box	7.2	3.3
UL1036**	201 SS	1/2	12.7	8	203	4.0	102	36	914	50/box	8.0	3.6
UL1046**	201 SS	1/2	12.7	11	279	5.5	140	46	1168	25/box	5.9	2.7
UL1056**	201 SS	1/2	12.7	14	356	7.0	178	56	1422	25/box	7.1	3.2
UL1070**	201 SS	1/2	12.7	18	457	9.0	229	70	1778	25/box	8.5	3.9
UL1086**	201 SS	1/2	12.7	22	559	11.0	280	86	2184	25/box	10.2	4.6
UL1096**	201 SS	1/2	12.7	25	635	12.5	318	96	2438	25/box	11.2	5.1
UL1106**	201 SS	1/2	12.7	28	711	14.0	356	106	2692	25/box	12.3	5.6
UL1116**	201 SS	1/2	12.7	31	787	15.5	394	116	2946	25/box	13.3	6.0
UL2020	201 SS	3/4	19.1	4	102	not suggested		20	508	30/tote	4.3	2.0
UL2024	201 SS	3/4	19.1	5	140	not suggested		24	610	25/tote	4.1	1.9
UL2028	201 SS	3/4	19.1	6	152	not suggested		28	711	21/tote	4.3	2.0
UL2032	201 SS	3/4	19.1	7	178	3.5	89	32	813	19/tote	4.3	2.0
UL2036	201 SS	3/4	19.1	8	252	4.0	102	36	914	33/tote	8.2	3.7
UL2040	201 SS	3/4	19.1	10	254	4.5	127	40	1016	30/tote	7.75	3.5
UL2044	201 SS	3/4	19.1	11	267	5.5	140	44	1118	27/tote	8.2	3.7
UL2048	201 SS	3/4	19.1	12	305	6.0	153	48	1219	25/tote	8.2	3.7
UL2052	201 SS	3/4	19.1	13	330	6.5	165	52	1321	23/tote	8.2	3.7
UL2060	201 SS	3/4	19.1	15	381	7.5	191	60	1524	20/tote	8.2	3.7
UL2068	201 SS	3/4	19.1	17	445	8.5	216	68	1727	17/tote	8.2	3.7
UL2076	201 SS	3/4	19.1	20	508	10.0	254	76	1930	15/tote	8.2	3.7
UL2084	201 SS	3/4	19.1	22	559	11.0	280	84	2134	14/tote	8.2	3.7
UL2092	201 SS	3/4	19.1	24	622	12.0	305	92	2337	13/tote	8.2	3.7
UL2120	201SS	3/4	19.1	32	826	16.0	407	120	3048	10/tote	8.2	3.7
UL2150	201 SS	3/4	19.1	41	1029	20.5	508	150	3810	8/tote	8.2	3.7
UL2175	201 SS	3/4	19.1	48	1232	24.0	610	175	4445	7/tote	8.2	3.7

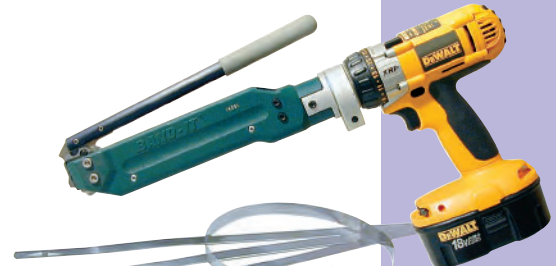
** 1/2" bands will require M09387 for UL4000 and UL9010 tool. Contact Factory.
 3/4" width band lengths 36" or longer in 100' totes; 34" or less in 50' totes.
 Ultra-Lok® is also available in preformed clamps, see page 32.

Ultra-Lok® Buckle

Part No.	Material*	Description	Package Quantity	Package Weight Lbs.	Kg
UB2549	201 SS	Ultra-Lok® Buckles, 1/2"	100/box	3.7	1.7
UB2569	201 SS	Ultra-Lok® Buckles, 3/4"	100/box	3.7	1.7

Ultra-Lok® Tools

Part No.	Description	Package Quantity	Package Weight Lbs.	Kg
UL4000	Ultra-Lok® 18-volt Rechargeable, Portable Tool	each	17.5	7.9
UL9010	Ultra-Lok® 110-volt AC, Corded Electric Tool	each	15	6.8
ULK249	Kit; Used to upgrade the tension body of the UL9000 and the UL9010	each	0.4	0.2
M09387	1/2" Shear plate for UL4000, upgraded UL9000 and UL9010 to convert from 3/4" Ultra-Lok® to 1/2" Ultra-Lok® Clamp Systems	each	0.1	0.1



Ultra-Lok® UL4000



Ultra-Lok® UL9010

SEE PAGE 32 FOR MORE DETAILS ON THE ULTRA-LOK® TOOLS.

*BAND-IT reserves the right to substitute material with equal or better corrosion resistance and/or mechanical specifications.



BAND-FAST™

BAND-FAST™ is ready to use band, pre-cut and pre-assembled with a clip, buckle or seal. Pre-assembled product gives you an edge over your competition as it saves up to 30% time and labor costs for your large projects. Wherever you traditionally use Band & Buckle, or have a need for innovative products, **BAND-FAST™** can do the job faster and with less scrap material! **BAND-FAST™** is available in many materials including: Monel®, Inconel®, AL6XN®, Titanium, AL2003™, 316SS and others upon request.



Determining the correct length for BAND-FAST™ products

When determining the correct product length, **BAND-FAST™** is measured from end to end.

BAND-FAST™ Precut and Assembled with Clip

Part No.	Material*	Width		Thickness		Finished Length		Maximum Diameter		Package Quantity	Package Weight		Application Tools		
		In	mm	In	mm	In	cm	Single Wrap	Double Wrap		Lbs	Kg			
L20399	201 SS	1/4	6.4	0.020	0.51	10	25	2	50	not suggested	100/box	2.2	0.9	C00169 C00369 C07569 J02069† C40099	
L20499	201 SS	1/4	6.4	0.020	0.51	16	40	3-1/2	88	1-1/2	38	100/box	3.1		1.4
L20799	201 SS	1/4	6.4	0.020	0.51	19	48	5	127	2-1/2	63	100/box	3.5		1.6
L20899	201 SS	1/4	6.4	0.020	0.51	26	68	7	177	3-1/2	88	100/box	4.6		2.1
L21099	201 SS	1/4	6.4	0.020	0.51	34	86	9	228	4-1/2	114	100/box	5.6		2.6
L22199	201 SS	3/8	9.6	0.025	0.64	16	40	3-1/2	88	1-1/2	38	100/box	6.2		2.8
L22999	201 SS	3/8	9.6	0.025	0.64	44	112	12	305	6	152	25/box	3.6		1.6
L24299	201 SS	1/2	12.7	0.030	0.76	18	45	4	102	2	50	100/box	10.5		4.8
L24699	201 SS	1/2	12.7	0.030	0.76	31	78	8	203	4	101	25/box	4.7		2.1
L26399	201 SS	5/8	15.9	0.030	0.76	21	53	5	127	2-1/2	63	100/box	15.1		6.8
L27199	201 SS	5/8	15.9	0.030	0.76	56	142	16	406	8	203	25/box	9.0		4.1
L27399	201 SS	5/8	15.9	0.030	0.76	69	508	20	508	10	175	25/box	10.7		4.8
L28499	201 SS	3/4	19.1	0.030	0.76	24	60	6	152	3	76	50/box	10.9		4.9
L28899	201 SS	3/4	19.1	0.030	0.76	37	93	10	254	5	127	25/box	7.6		3.5
L29099	201 SS	3/4	19.1	0.030	0.76	50	127	14	355	7	177	25/box	9.7		4.4
L29299	201 SS	3/4	19.1	0.030	0.76	62	157	18	457	9	228	25/box	11.6		5.3

† The J02069 can be used with 3/8" maximum width product.

BAND-FAST™ Precut and Assembled with Ear-Lokt Buckle

Part No.	Material*	Width		Thickness		Finished Length		Maximum Diameter		Package Quantity	Package Weight		Application Tools
		In	mm	In	mm	In	cm	Single Wrap	Double Wrap		Lbs	Kg	
BFES-A0830-020	201 SS	1/2	12.7	0.030	0.76	20	51	4	102	2	51	25/box	C00169 C00369 C07569 C40099
BFES-A0830-024	201 SS	1/2	12.7	0.030	0.76	24	61	5	127	2.5	64	25/box	
BFES-A0830-027	201 SS	1/2	12.7	0.030	0.76	27	69	6	152	3	76	25/box	
BFES-A0830-034	201 SS	1/2	12.7	0.030	0.76	34	86	8	203	4	102	25/box	
BFES-A0830-041	201 SS	1/2	12.7	0.030	0.76	41	104	10	254	5	127	25/box	
BFES-A0830-048	201 SS	1/2	12.7	0.030	0.76	48	122	12	305	6	152	25/box	
BFES-A0830-055	201 SS	1/2	12.7	0.030	0.76	55	140	14	356	7	178	25/box	
BFES-A0830-069	201 SS	1/2	12.7	0.030	0.76	69	175	18	457	9	229	25/box	
BFES-A0830-076	201 SS	1/2	12.7	0.030	0.76	76	193	20	508	10	254	15/box	
BFES-A0830-090	201 SS	1/2	12.7	0.030	0.76	90	229	24	610	12	305	15/box	
BFES-A1230-020	201 SS	3/4	19.1	0.030	0.76	20	51	4	102	2	51	25/box	
BFES-A1230-024	201 SS	3/4	19.1	0.030	0.76	24	61	5	127	2.5	64	25/box	
BFES-A1230-027	201 SS	3/4	19.1	0.030	0.76	27	69	6	152	3	76	25/box	
BFES-A1230-034	201 SS	3/4	19.1	0.030	0.76	34	86	8	203	4	102	25/box	
BFES-A1230-041	201 SS	3/4	19.1	0.030	0.76	41	104	10	254	5	127	25/box	
BFES-A1230-048	201 SS	3/4	19.1	0.030	0.76	48	122	12	305	6	152	25/box	
BFES-A1230-055	201 SS	3/4	19.1	0.030	0.76	55	140	14	356	7	178	25/box	
BFES-A1230-069	201 SS	3/4	19.1	0.030	0.76	69	175	18	457	9	229	25/box	
BFES-A1230-076	201 SS	3/4	19.1	0.030	0.76	76	193	20	508	10	254	15/box	
BFES-A1230-090	201 SS	3/4	19.1	0.030	0.76	90	229	24	610	12	305	15/box	

*BAND-IT reserves the right to substitute material with equal or better corrosion resistance and/or mechanical specifications.

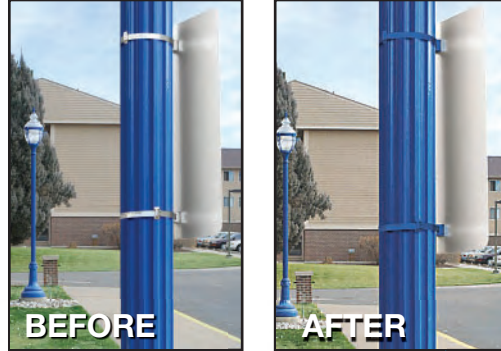


BAND-FAST™ is now available in standard pre-determined lengths as well as custom lengths and materials. Call for special quote.

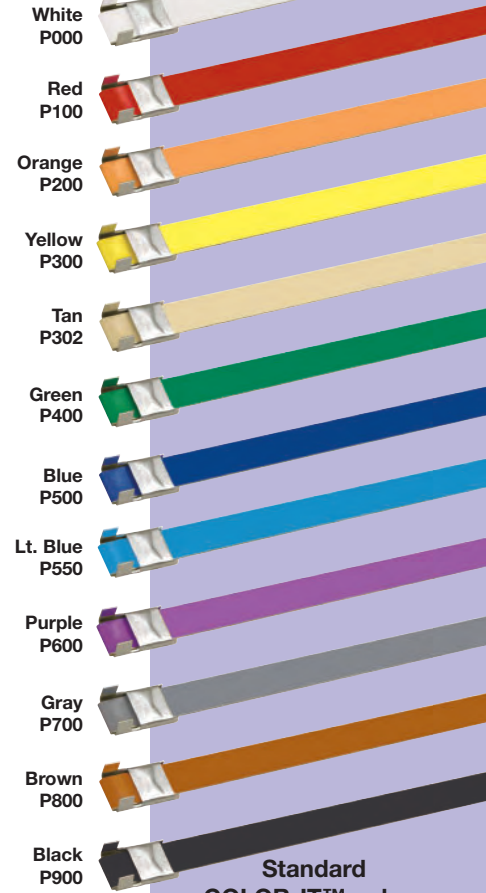
COLOR-IT™

Polyester

COLOR-IT™ coatings are available in a variety of colors and types providing superior performance and manufactured with your specific application in mind. Whether you are color-matching decorative light poles, identifying materials, or matching existing hardware on specific projects, COLOR-IT™ has the right coating for your project needs. Products coated with COLOR-IT™ work with standard banding tools.



COLOR-IT™



Roll Band with COLOR-IT™ - Polyester

Part No.	Material*	Width		Thickness		Package Quantity	Package Weight		Color	RAL#	Application Tools
		In	mm	In	mm		Lbs.	Kg			
C204C9-P000	201SS	1/2	12.7	0.030	0.76	100'/roll	5.1	2.3	White	9016	C00169 C00369 C07569 C08569 C40099
C204C9-P100	201SS	1/2	12.7	0.030	0.76	100'/roll	5.1	2.3	Red	3001	
C204C9-P200	201SS	1/2	12.7	0.030	0.76	100'/roll	5.1	2.3	Orange	2008	
C204C9-P300	201SS	1/2	12.7	0.030	0.76	100'/roll	5.1	2.3	Yellow	1018	
C204C9-P302	201SS	1/2	12.7	0.030	0.76	100'/roll	5.1	2.3	Tan	1001	
C204C9-P400	201SS	1/2	12.7	0.030	0.76	100'/roll	5.1	2.3	Green	6032	
C204C9-P500	201SS	1/2	12.7	0.030	0.76	100'/roll	5.1	2.3	Blue	5002	
C204C9-P550	201SS	1/2	12.7	0.030	0.76	100'/roll	5.1	2.3	Lt. Blue	5012	
C204C9-P600	201SS	1/2	12.7	0.030	0.76	100'/roll	5.1	2.3	Purple	4008	
C204C9-P700	201SS	1/2	12.7	0.030	0.76	100'/roll	5.1	2.3	Gray	7036	
C204C9-P800	201SS	1/2	12.7	0.030	0.76	100'/roll	5.1	2.3	Brown	8002	
C204C9-P900	201SS	1/2	12.7	0.030	0.76	100'/roll	5.1	2.3	Black	9004	
C206C9-P900	201SS	3/4	19.1	0.030	0.76	100'/roll	7.6	3.4	Black	9004	

Ear-Lokt Buckles with COLOR-IT™ - Polyester

Part No.	Material*	Width		Package Quantity	Package Weight		Color	RAL#	Application Tools
		In	mm		Lbs.	Kg			
C25499-D900	201SS	1/2	12.7	100/box	1.7	0.8	Black	9004	C00169, C00369 C07569, C08569
C25699-D900	201SS	3/4	19.1	100/box	3.5	1.6	Black	9004	



BAND-IT Can Match Any Color. Call for Quote.



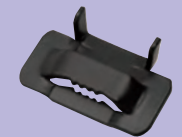
Roll Band with COLOR-IT™ Polyester

BAND-FAST™ with Ear-Lokt Buckle with COLOR-IT™ - Polyester

Part No.	Material*	Width		Thickness	Finished Length	Maximum Diameter		Package Quantity	Color	Application Tools				
		In	mm			Single Wrap	Double Wrap							
BFES-A0830-020-P900C†	201 SS	1/2	12.7	0.030	0.76	20	51	4	102	2	51	25/box	Black†	C00169 C00369 C07569 C40099 C08569
BFES-A0830-024-P900C†	201 SS	1/2	12.7	0.030	0.76	24	61	5	127	2.5	64	25/box	Black†	
BFES-A0830-027-P900C†	201 SS	1/2	12.7	0.030	0.76	27	69	6	152	3	76	25/box	Black†	
BFES-A0830-034-P900C†	201 SS	1/2	12.7	0.030	0.76	34	86	8	203	4	102	25/box	Black†	
BFES-A0830-041-P900C†	201 SS	1/2	12.7	0.030	0.76	41	104	10	254	5	127	25/box	Black†	
BFES-A0830-048-P900C†	201 SS	1/2	12.7	0.030	0.76	48	122	12	305	6	152	25/box	Black†	
BFES-A0830-055-P900C†	201 SS	1/2	12.7	0.030	0.76	55	140	14	356	7	178	25/box	Black†	
BFES-A0830-069-P900C†	201 SS	1/2	12.7	0.030	0.76	69	175	18	457	9	229	25/box	Black†	
BFES-A0830-076-P900C†	201 SS	1/2	12.7	0.030	0.76	76	193	20	508	10	254	15/box	Black†	
BFES-A0830-090-P900C†	201 SS	1/2	12.7	0.030	0.76	90	229	24	610	12	305	15/box	Black†	
BFES-A0830-020-P900C	201 SS	3/4	19.1	0.030	0.76	20	51	4	102	2	51	25/box	Black	
BFES-A1230-024-P900C	201 SS	3/4	19.1	0.030	0.76	24	61	5	127	2.5	64	25/box	Black	
BFES-A1230-027-P900C	201 SS	3/4	19.1	0.030	0.76	27	69	6	152	3	76	25/box	Black	
BFES-A1230-034-P900C	201 SS	3/4	19.1	0.030	0.76	34	86	8	203	4	102	25/box	Black	
BFES-A1230-041-P900C	201 SS	3/4	19.1	0.030	0.76	41	104	10	254	5	127	25/box	Black	
BFES-A1230-048-P900C	201 SS	3/4	19.1	0.030	0.76	48	122	12	305	6	152	25/box	Black	
BFES-A1230-055-P900C	201 SS	3/4	19.1	0.030	0.76	55	140	14	356	7	178	25/box	Black	
BFES-A1230-069-P900C	201 SS	3/4	19.1	0.030	0.76	69	175	18	457	9	229	25/box	Black	
BFES-A1230-076-P900C	201 SS	3/4	19.1	0.030	0.76	76	193	20	508	10	254	15/box	Black	
BFES-A1230-090-P900C	201 SS	3/4	19.1	0.030	0.76	90	229	24	610	12	305	15/box	Black	

†BAND-FAST™ in 1/2" wide 201 SS is also available in other COLOR-IT™ colors and buckle configurations. Please call for more information.

*BAND-IT reserves the right to substitute material with equal or better corrosion resistance and/or mechanical specifications.



Ear-Lokt Buckle with COLOR-IT™ Black Polyester



BAND-FAST™ with COLOR-IT™ Black Polyester



201 Stainless Steel BAND-IT® BAND

Part No.	Material*	Width		Thickness		Average Breaking Strength (lbs)	Package Quantity	Package Weight		Application Tools
		In	mm	In	mm			Lbs	Kg	
C20299	201 SS	1/4	6.4	0.020	0.51	500	100'/roll	1.7	0.7	C00169 C00369 C07569 C08569 C40099 J02069†
C20399	201 SS	3/8	9.6	0.025	0.64	900	100'/roll	3.2	1.5	
C203Y9	201 SS	3/8	9.6	0.025	0.64	900	Yellow Tote 100'/roll	3.6	1.6	
C20499	201 SS	1/2	12.7	0.030	0.76	1500	100'/roll	5.1	2.3	
C204B9	201 SS	1/2	12.7	0.030	0.76	1500	Blue Tote 100'/roll	5.5	2.5	
C20599	201 SS	5/8	15.9	0.030	0.76	1875	100'/roll	6.4	2.9	
C205G9	201 SS	5/8	15.9	0.030	0.76	1875	Green Tote 100'/roll	6.8	3.1	
C20699	201 SS	3/4	19.1	0.030	0.76	2250	100'/roll	7.7	3.5	
C206R9	201 SS	3/4	19.1	0.030	0.76	2250	Red Tote 100'/roll	8.2	3.7	

† The J02069 can be used with 3/8" maximum width product.

BAND-IT® Buckle Ear-Lokt Style

Part No.	Material*	Width		Package Quantity	Package Weight	
		In	mm		Lbs	Kg
C25299**	SS	1/4	6.4	100/box	0.3	0.1
C25399	SS	3/8	9.6	100/box	0.8	0.4
C25499	SS	1/2	12.7	100/box	2.1	1.0
C25599	SS	5/8	15.9	100/box	2.4	1.1
C25699	SS	3/4	19.1	100/box	3.7	1.7

**Clip style.

Giant Band

Part No.	Material*	Width		Thickness		Average Breaking Strength (lbs)	Package Quantity	Package Weight		Application Tools
		In	mm	In	mm			Lbs	Kg	
G43099	201 SS	3/4	19.1	0.044	1.10	3300	100'/roll	11.6	5.4	C00369 (3/4" only)
G43199	201 SS	1	25.4	0.044	1.10	4400	100'/roll	13.7	6.4	G40269
G43299	201 SS	1 1/4	31.8	0.044	1.10	5500	100'/roll	17.2	8.0	

Galvanized Carbon Steel also available.

Giant Buckle Ear-Lokt Style

Part No.	Material*	Width		Package Quantity	Package Weight	
		In	mm		Lbs	Kg
G44099	SS	3/4	19.1	25/box	1.8	0.8
G44199	SS	1	25.4	25/box	2.4	1.1
G44299	SS	1 1/4	31.8	25/box	3.2	1.4

Hand Tools for Band and Buckle

Part No.	Description	Package Weight	
		Lbs.	Kg
C00169	BAND-IT® Tool - For band widths from 3/16" to 3/4"	4.3	1.8
C00369	BAND-IT® Heavy Duty Tool - For band widths from 3/16" to 3/4"	4.3	1.8
C07569	Bantam Tool Low torque - For band widths from 3/16" to 3/4"	2.6	1.1
C08569	Bantam strapping tool - Low torque for band widths from 3/16" to 3/4"	2.6	1.1
C40099	Ratchet Tool - For band widths from 3/16" to 3/4" Ratchet style alternative to C00169	3.3	1.4
G40269	Giant Tool - For use with only Giant Band from 3/4" to 1 1/4"	10.4	4.5
J02069	Pok-It II Tool with cutter - For band widths from 3/16" to 3/8" wide	0.8	0.3
J07599	Thriftool®, 10 Pack - Applies tension, 3/16" - 3/8" wide band, BAND-FAST™, BAND-IT Jr.® Clamps	5.9	2.7

*BAND-IT reserves the right to substitute material with equal or better corrosion resistance and/or mechanical specifications.



Hand Tools for Band & Buckle



C00169 BAND-IT® Tool



C00369 BAND-IT® Heavy Duty Tool



C07569 Bantam Tool



C08569 Bantam Strapping Tool



C40099 Ratchet Tool

BAND-IT® Band



Ear-Lokt Buckle

Giant Band



Giant Ear-Lokt Buckle



G40269 Giant Tool



J02069 Pok-It II Tool with Cutter

VALU-STRAP™

Part No.	Material*	Width		Thickness		Average Breaking Strength (lbs)	Package Quantity	Package Weight		Application Tools
		In	mm	In	mm			Lbs	Kg	
C13199	SS	3/16	4.8	0.015	0.38	280	100'/roll	1.2	0.5	C00169 C00369 C07569 C08569 C40099 J02069†
C13399	SS	3/8	9.6	0.015	0.38	450	100'/roll	2.2	1.0	
C13499	SS	1/2	12.7	0.015	0.38	600	100'/roll	2.9	1.3	
C13599	SS	5/8	15.9	0.015	0.38	750	100'/roll	3.6	1.7	
C13699	SS	3/4	19.1	0.015	0.38	900	100'/roll	4.4	2.0	
C12799	SS	3/8	9.6	0.015	0.38	450	200'/roll	4.4	2.0	
C12899	SS	1/2	12.7	0.015	0.38	600	200'/roll	5.8	2.6	
C12999	SS	5/8	15.9	0.015	0.38	750	200'/roll	7.3	3.2	
C13099	SS	3/4	19.1	0.015	0.38	900	200'/roll	8.8	3.9	

These products available in 300' rolls & Mill coil.

† The J02069 can be used with 3/8" maximum width product.

VALU-STRAP™ Plus

Part No.	Material*	Width		Thickness		Average Breaking Strength (lbs)	Package Quantity	Package Weight		Application Tools
		In	mm	In	mm			Lbs	Kg	
C19199	SS	3/8	9.6	0.020	0.51	600	100'/roll	2.9	1.3	C00169 C00369 C07569 C08569 C40099 J02069†
C18189	SS	1/2	12.7	0.020	0.51	850	100'/roll	3.8	1.7	
C17199	SS	5/8	15.9	0.020	0.51	1000	100'/roll	5.6	2.6	
C16189	SS	3/4	19.1	0.020	0.51	1275	100'/roll	5.7	2.5	
C19399	SS	3/8	9.6	0.020	0.51	600	200'/roll	5.8	2.6	
C18389	SS	1/2	12.7	0.020	0.51	850	200'/roll	7.6	3.4	
C17399	SS	5/8	15.9	0.020	0.51	1000	200'/roll	11.2	5.2	
C16389	SS	3/4	19.1	0.020	0.51	1275	200'/roll	11.4	5.0	

† The J02069 can be used with 3/8" maximum width product.

Valuband

Part No.	Material*	Width		Thickness		Average Breaking Strength (lbs)	Package Quantity	Package Weight		Application Tools
		In	mm	In	mm			Lbs	Kg	
C14499	SS	1/2	12.7	0.025	0.64	1000	100'/roll	4.5	2.0	C00169 C00369 C07569 C08569 C40099
C14599	SS	5/8	15.9	0.025	0.64	1250	100'/roll	5.6	2.6	
C14699	SS	3/4	19.1	0.025	0.64	1590	100'/roll	6.7	3.0	
C14899	SS	1/2	12.7	0.025	0.64	1000	200'/roll	9.0	4.0	
C14999	SS	5/8	15.9	0.025	0.64	1250	200'/roll	11.2	5.2	
C15099	SS	3/4	19.1	0.025	0.64	1590	200'/roll	13.4	6.0	

These products available in 300' rolls & Mill coil.

Valuclip

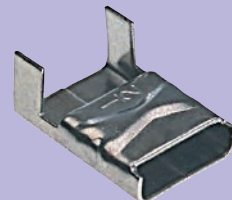
Part No.	Material*	Width		Package Quantity	Package Weight	
		In	mm		Lbs	Kg
C15199	SS	3/16	4.8	100/box	0.2	0.1
C15399	SS	3/8	9.6	100/box	0.6	0.3
C15499	SS	1/2	12.7	100/box	1.1	0.5
C15599	SS	5/8	15.9	100/box	1.2	0.5
C15699	SS	3/4	19.1	100/box	2.1	0.9



Valuclip

Stainless Steel Clip

Part No.	Material*	Width		Package Quantity	Package Weight	
		In	mm		Lbs	Kg
C25299	SS	1/4	6.4	100/box	0.3	0.1
L15399	SS	3/8	9.6	100/box	0.9	0.4
L15499	SS	1/2	12.7	100/box	1.5	0.7
L15599	SS	5/8	15.9	100/box	1.8	0.8
L15699	SS	3/4	19.1	100/box	2.6	1.2



Stainless Steel Clip

Galvanized Carbon Steel Band

Part No.	Material*	Width		Thickness		Average Breaking Strength (lbs)	Package Quantity	Package Weight		Application Tools
		In	mm	In	mm			Lbs	Kg	
C30399	GCS	3/8	9.6	0.025	0.63	700	100'/roll	3.3	1.6	C00169 C00369 C07569 C08569, C40099
C30499	GCS	1/2	12.7	0.030	0.76	1125	100'/roll	5.1	2.4	
C30599	GCS	5/8	15.9	0.030	0.76	1405	100'/roll	6.4	3.0	
C30699	GCS	3/4	19.1	0.030	0.76	1690	100'/roll	7.7	3.6	

These products available in Mill coil.

*BAND-IT reserves the right to substitute material with equal or better corrosion resistance and/or mechanical specifications.



C40099 Ratchet Tool
For product information see page 13.



VALU-STRAP™



Thriftool®
For product information see page 13.



C07569 Bantam Tool
For product information see page 13.



Galvanized Carbon Steel Band



Galvanized Carbon Steel Ear-Lokt Buckle

Part No.	Material*	Width		Package Quantity	Package Weight	
		In	mm		Lbs	Kg
C35399	GCS	3/8	9.6	100/box	0.8	0.4
C35499	GCS	1/2	12.7	100/box	2.1	1.0
C35599	GCS	5/8	15.9	100/box	2.4	1.1
C35699	GCS	3/4	19.1	100/box	3.7	1.7

304 Stainless Steel Band

Part No.	Material*	Width		Thickness		Average Breaking Strength (lbs)	Package Quantity	Package Weight		Application Tools
		In	mm	In	mm			Lbs	Kg	
C90399	304 SS	3/8	9.6	0.015	0.38	450	200'/roll	4.4	2.0	C00169 C00369 C07569 C08569 C40099 J02069†
C91399	304 SS	3/8	9.6	0.020	0.51	600	200'/roll	5.9	2.7	
C90499	304 SS	1/2	12.7	0.015	0.38	600	200'/roll	5.8	2.6	
C91499	304 SS	1/2	12.7	0.020	0.51	850	200'/roll	7.6	3.4	
C90599	304 SS	5/8	15.9	0.015	0.38	750	200'/roll	7.3	3.2	
C91599	304 SS	5/8	15.9	0.020	0.51	1000	200'/roll	9.5	4.3	
C90699	304 SS	3/4	19.1	0.015	0.38	900	200'/roll	8.8	3.9	
C91699	304 SS	3/4	19.1	0.020	0.51	1275	200'/roll	11.3	5.0	

† The J02069 can be used with 3/8" maximum width product.

316 Stainless Steel Band Uncoated and Coated

Part No.	Material*	Width		Thickness		Average Breaking Strength (lbs)	Package Quantity	Package Weight		Application Tools
		In	mm	In	mm			Lbs	Kg	
C40299	316 SS	1/4	6.4	0.020	0.51	400	100'/roll	2.0	0.9	C00169 C07569 C08569 C00369 C40099 J02069†
C40399	316 SS	3/8	9.6	0.025	0.64	750	100'/roll	3.5	1.6	
C403Y9	316 SS	3/8	9.6	0.025	0.64	750	Yellow Tote 100'/roll	3.7	1.7	
C40499	316 SS	1/2	12.7	0.030	0.76	1200	100'/roll	4.9	2.2	
C404B9	316 SS	1/2	12.7	0.030	0.76	1200	Blue Tote 100'/roll	5.6	2.6	
C40599	316 SS	5/8	15.9	0.030	0.76	1500	100'/roll	6.2	2.8	
C405G9	316 SS	5/8	15.9	0.030	0.76	1500	Green Tote 100'/roll	6.9	3.1	
C40699	316 SS	3/4	19.1	0.030	0.76	1800	100'/roll	7.5	3.4	
C406R9	316 SS	3/4	19.1	0.030	0.76	1800	Red Tote 100'/roll	8.2	3.7	
C44499	316 SS	1/2	12.7	0.015	0.38	600	200'/roll	5.7	2.6	
C444B9	316 SS	1/2	12.7	0.015	0.38	600	Blue Tote 200'/roll	5.8	2.7	
C44599	316 SS	5/8	15.9	0.015	0.38	750	200'/roll	6.7	3.0	
C445G9	316 SS	5/8	15.9	0.015	0.38	750	Green Tote 200'/roll	6.9	3.1	
C44699	316 SS	3/4	19.1	0.015	0.38	900	200'/roll	8.3	3.8	
C446R9	316 SS	3/4	19.1	0.015	0.38	900	Red Tote 200'/roll	8.4	3.8	

These products available in Mill coil.

† The J02069 can be used with 3/8" maximum width product.

316 Stainless Steel Coated Band

AE4329	316 SS	1/4	6.4	0.048**1.22**	335	82.5'/roll	2.0	0.9	C07569 C08569 C40099
AE4339	316 SS	3/8	9.6	0.048**1.22**	505	82.5'/roll	2.6	1.2	
AE4349	316 SS	1/2	12.7	0.048**1.22**	670	82.5'/roll	3.5	1.6	
AE4359	316 SS	5/8	15.9	0.048**1.22**	840	82.5'/roll	4.4	2.0	
AE4369	316 SS	3/4	19.1	0.048**1.22**	1000	82.5'/roll	5.3	2.4	

**Material thickness includes PPA 571 coating - Base material thickness is 0.015".

316 Stainless Steel Clip

Part No.	Material*	Width		Package Quantity	Package Weight	
		In	mm		Lbs	Kg
AE4529	316 SS	1/4	6.4	100/box	0.3	0.1
AE4539	316 SS	3/8	9.6	100/box	0.6	0.3
AE4549	316 SS	1/2	12.7	100/box	1.0	0.4
AE4559	316 SS	5/8	15.9	100/box	1.1	0.5
AE4569	316 SS	3/4	19.1	100/box	1.3	0.6

316 Stainless Steel Ear-Lokt Buckle

Part No.	Material*	Width		Package Quantity	Package Weight	
		In	mm		Lbs	Kg
C45299**	316 SS	1/4	6.4	100/box	0.3	0.1
C45399	316 SS	3/8	9.6	100/box	0.8	0.4
C45499	316 SS	1/2	12.7	100/box	2.1	1.0
C45599	316 SS	5/8	15.9	100/box	2.4	1.1
C45699	316 SS	3/4	19.1	100/box	3.7	1.7

** Clip style

Stainless Steel Scru-Lokt Buckle

Part No.	Material*	Width		Package Quantity	Package Weight	
		In	mm		Lbs	Kg
C72099	301 SS 1/4 Hard	1/4	6.4	50/box	0.3	0.1
C72299	301 SS 1/4 Hard	3/8	9.6	50/box	0.5	0.2
C72499	301 SS 1/4 Hard	1/2	12.7	25/box	0.5	0.2
C72599	201 SS	5/8	15.9	25/box	0.8	0.4
C72699	201 SS	3/4	19.1	25/box	0.9	0.4

*BAND-IT reserves the right to substitute material with equal or better corrosion resistance and/or mechanical specifications.



**C00369 BAND-IT®
Heavy Duty Tool**

For product information see page 13.



C00169 BAND-IT® Tool

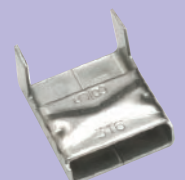
For product information see page 13.



316 Stainless Steel Band



316 Coated Stainless Steel Band



316 Stainless Steel Clip



316 Stainless Steel Ear-Lokt Buckle



Stainless Steel Scru-Lokt Buckle

317L Band

Part No.	Material*	Width		Thickness		Average Breaking Strength (lbs)	Package Quantity	Package Weight		Application Tools
		In	mm	In	mm			Lbs	Kg	
C41399	317L 1/4 Hard SS	3/8	9.6	0.030	0.76	1290	300'/roll	11.9	5.3	C00169 C00369 C40099 J02069†
C42499	317L 1/4 Hard SS	1/2	12.7	0.020	0.51	1160	300'/roll	10.2	4.6	
C41499	317L 1/4 Hard SS	1/2	12.7	0.030	0.76	1725	300'/roll	15.9	7.2	
C41599	317L 1/4 Hard SS	5/8	15.9	0.030	0.76	2150	300'/roll	19.9	9.0	
C41699	317L 1/4 Hard SS	3/4	19.1	0.030	0.76	2580	300'/roll	23.9	10.8	

These products available in Mill coil.

† The J02069 tool can be used with 3/8" maximum width product.

Monel® 400 Band

Part No.	Material*	Width		Thickness		Average Breaking Strength (lbs)	Package Quantity	Package Weight		Application Tools
		In	mm	In	mm			Lbs	Kg	
C80399	Monel® 400	3/8	9.6	0.025	0.64	630	100'/roll	3.7	1.7	C00169 C00369 C40099 J02069†
C80499	Monel® 400	1/2	12.7	0.030	0.76	1050	100'/roll	5.1	2.4	
C80599	Monel® 400	5/8	15.9	0.030	0.76	1310	100'/roll	7.7	3.5	
C80699	Monel® 400	3/4	19.1	0.030	0.76	1595	100'/roll	7.7	3.6	

† The J02069 tool can be used with 3/8" maximum width product.

Monel® 400 Buckle

Part No.	Material*	Width		Package Quantity	Package Weight	
		In	mm		Lbs	Kg
C85399	Monel® 400	3/8	9.6	100/box	0.8	0.4
C85499	Monel® 400	1/2	12.7	100/box	2.1	1.0
C85599	Monel® 400	5/8	15.9	100/box	2.4	1.0
C85699	Monel® 400	3/4	19.1	100/box	3.7	1.7

All Purpose Band

Part No.	Material*	Width		Thickness	Diameter of Hole		Package Quantity	Package Weight	
		In	mm		In	mm		Lbs	Kg
AE4759	316 SS (coated)	1/2	12.7	0.050**	1.3**	3/16	5	82.5/roll	3.1 1.4
AE4769	316 SS (coated)	3/4	19.1	0.050**	1.3**	9/32	7	82.5/roll	5.3 2.4
AE4779	316 SS (coated)	1	25.4	0.050**	1.3**	5/16	8	82.5/roll	7.3 3.3
AE4259	316 SS (uncoated)	1/2	12.7	0.030	0.76	3/16	5	82.5/roll	3.1 1.4
AE4269	316 SS (uncoated)	3/4	19.1	0.030	0.76	9/32	7	82.5/roll	4.6 2.1
AE4279	316 SS (uncoated)	1	25.4	0.030	0.76	5/16	8	82.5/roll	5.5 2.5

**Material thickness includes PPA 551 coating - Base material thickness is 0.030".

Q-Band™

The Q-Band/Q-Clip plastic clamping system is ideal for hundreds of light-duty fastening applications. Material Specification: polypropylene, U.V. Resistant, non-toxic, temperature range -30°F to +220°F (-34°C to +104°C). UL Rated.

Part No.	Material*	Width		Thickness	Package Quantity	Package Weight		Application Tools
		In	mm			Lbs	Kg	
Q70499	White Plastic	1/2	12.7	0.030	100'/roll	0.8	0.3	Q72099

Q-Clip™

Part No.	Material*	Width		Package Quantity	Package Weight	
		In	mm		Lbs	Kg
Q71499	White Plastic	1/2	12.7	25/box	0.2	0.1

Pipe Patches

Metal backed patches lined with SBR compound function in a temperature range from -50° to +225°F. Not recommended for use on toxic and caustic gas and liquid lines.

Part No.	Size		Form	Package Quantity	Package Weight	
	Inches	mm			Lbs	Kg
D05089	1 x 1	25 x 25	Flat	30/box	0.3	0.1
D05199	2 x 2 1/2	50 x 63	Curved	10/box	0.9	0.4
D05299	3 x 3 1/2	76 x 88	Curved	10/box	1.9	0.9
D05499	3 1/2 x 4	88 x 101	Curved	10/box	2.5	1.1
D05599	3 1/2 x 6	88 x 152	Curved	5/box	1.9	0.9
D05699	3 1/2 x 8	88 x 203	Curved	5/box	2.6	1.2
D05799	3 1/2 x 10	88 x 254	Curved	5/box	3.4	1.6
D05399	Pipe Patch Kit Contains: 1-D05089, 1-D05199, 1-D05299		n/a	Kit	3.4	1.6

*BAND-IT reserves the right to substitute material with equal or better corrosion resistance and/or mechanical specifications.



Monel® 400 Band



Monel® 400 Ear-Lokt Buckle



All Purpose Band



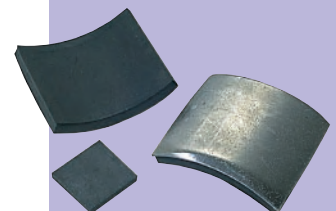
Q70499 Q-Band™



Q71499 Q-Clip™



Q72099 Q-Tool



Pipe Patches



Kits

BAND-IT® Warehouse Kit C27599

- Portable rugged container, 16" x 8 1/2" x 9 3/4" (Weight: 51.5 lbs, 23.4 Kg).
- Kit includes: 1 each - C00169, close quarter tension nut, C20299, C20399, C20499, C20599, C20699, C25299, C25399, C25499, C25599, C25699, C72099, C72499, C72699.



C27599 BAND-IT®
Warehouse Kit

BAND-IT® Band and Buckle Kit C27699 and C27799

- Basic starter kit in a polyethylene case.
- Two versions available.
- C27699, 1/2" band and buckle kit includes: 1 - C00169, 1 - C20499, 1 - C25499, 1 - C72499 (Weight: 17.2 lbs, 7.8 Kg).
- C27799, 3/4" band and buckle kit includes: 1 - C00169, 1 - C20699, 1 - C25699, 1 - C72699 (Weight: 21.6 lbs, 9.8 Kg).



C27699 BAND-IT®
Band and Buckle Kit

Pok-It Pak Kit J10099

- Polyethylene carrying case.
- Kit includes: 1 - J02069 Pok-It II tool, 1 - C20299, 1 - C20399, 1 - C25299, 1 - C25399, 1 - C72099, 1 - C72299, 80 - Junior® Smooth ID clamps (20 - 3/8" W x 13/16" dia, 20 - 3/8" W x 1 3/8" dia, 20 - 1/4" W x 3/4" dia, 20 - 3/8" W x 1 3/8" dia), 10 - BAND-FAST™ 1/4" W x 16" L, 10 - BAND-FAST™ 1/4" W x 34" L.



J10099 Pok-It Pak Kit

ID Kit ID3009

An assortment of blank ID tags to use with the ID Tagging System. Also, includes various Tie-Lok® ties and Tie-Lok® tool for tag fastening.

- Package Weight: 22.7 Lbs (10.3 Kg)
- Kit Includes: 1-A92079, 2-ID1029, 1-ID1019, 1-ID1009, 1-AS2119, 2-AS2129, 1-AS2139.

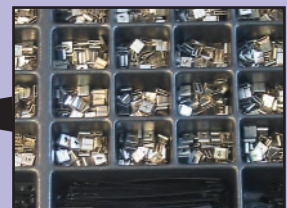


ID Kit ID3009

EASY READ Kit AE0609

An assortment of characters, carriers, and strips in a convenient carry case.

- Weight: 5.60 Lbs (2.54 Kg).
- Kit Includes: Carrying case, 50 of each character, carriers and strips.



EASY READ Kit AE0609

Brack-Its and Mounting Hardware

Brack-Its

- Used to mount traffic signs, security devices, and enclosures.
- Withstands stress and wind vibration with specially designed reinforcement ribs.
- Fully threaded to solidly anchor attachment bolts.
- Hex head bolts with metal and fiber washer, no nuts required.
- Applied with BAND-IT® Band and Buckles, VALU-STRAP™, VALU-STRAP Plus™, BAND-FAST™ or Ultra-Lok® Systems.

Mini Brack-It

Part No.	Description	Thickness		Package Quantity	Package Weight	
		In	mm		Lbs	Kg
D31099	Flared Leg mini-Brack-It, SS with SS bolt and fiber washer, 1/2" slot	0.050	1.27	50/box	3.0	1.5
D31599	Straight Leg mini-Brack-It, SS, with SS bolt and fiber washer, 1/2" slot	0.050	1.27	50/box	3.0	1.5
D30288	5/16-24 x 1/2" Hex Head SS bolt, washer and fiber washer for mini-Brack-It	-	-	50/box	1.0	0.5

Single Bolt Flared Leg Brack-It

Part No.	Description	Thickness		Package Quantity	Package Weight	
		In	mm		Lbs	Kg
D02189	Single bolt flared leg SS Brack-It with SS bolt, washer and fiber washer, 3/4" slot	0.070	1.78	50/box	7.0	3.2
D02299	Single bolt flared leg SS Brack-It only, 3/4" slot	0.070	1.78	50/box	5.5	7.5

Single Bolt Straight Leg Brack-It

Part No.	Description	Thickness		Package Quantity	Package Weight	
		In	mm		Lbs	Kg
D00189	Single bolt straight leg SS with SS bolt, washer and fiber washer, 3/4" slot	0.070	1.78	50/box	7.0	3.2
D00499	Single bolt straight leg SS Brack-It only, 3/4" slot	0.070	1.78	50/box	5.6	2.5

2-Bolt Brack-It

Part No.	Description	Thickness		Package Quantity	Package Weight	
		In	mm		Lbs	Kg
D00889	2 bolt straight leg SS Brack-It with SS Bolt, washer, and fiber washer, 3/4" slot	0.070	1.78	50/box	9.2	4.2
D00999	2 bolt straight leg SS Brack-It only, 3/4" slot	0.070	1.78	50/box	7.1	3.2

Bolts and Washers for Brack-Its

Part No.	Description	Package Quantity	Package Weight	
			Lbs	Kg
D00299	5/16"-18 x 3/4" Hex Head SS bolt, washer and fiber washer	50/bag	1.3	0.6

L-Mount Right Angle Brack-It

Part No.	Description	Package Quantity	Package Weight	
			Lbs	Kg
D00799	L-Mount right angle Brack-It, 0.070" thick SS, includes two bolt holes suitable for 5/16" or 1/4" bolts. Solid anchor for signs mounted at right angle. Does not include bolts.	50/box	4.4	2.0



Mounting Plate

Part No.	Description	Package Quantity	Package Weight	
			Lbs	Kg
D51089	Mounting Plate, Aluminum, 1-1/2" (3.81 mm) x 4-3/4" (120.7mm) with a 2" long 5/8" plated bolt.	25/box	15.0	6.8
D51289	Mounting Plate, Aluminum, 1-1/2" x 5-1/4" with a 2" long 5/8" plated bolt.	25/box	21.3	9.6
D51389	Mounting Plate, Aluminum, 1-1/2" x 5-1/4" with a 3" long 5/8" plated bolt.	25/box	21.3	9.6

- Aluminum extruded plate with 5/8 - 11 x 2" (50.8mm) plated bolt and nut.
- Available in two different sizes.
- Band slot width 1.375" to accommodate a single or double wrap of our 1 1/4" wide x .044 thick Giant Band.

BAND-IT® Bolt/Clamp

Part No.	Description	Package Quantity	Package Weight	
			Lbs	Kg
D50089	Bolt/Clamp. Includes a 3/8-16 X 6.0" carriage bolt. Slot will accommodate 3/4" width Giant Band	50/box	23.7	10.8
D50489	Bolt/Clamp. Includes a 5/8-11 X 8.0" carriage bolt. Slot will accommodate 1-1/4" width Giant Band	25/box	33.0	15.0

- Aluminum extruded housing with plated carriage bolt, nut and washer.
- Can be used with Giant Band.

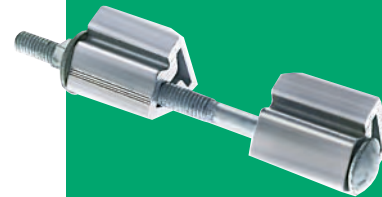
Signal Mounts 1-1/2" NPT

Part No.	Description	Package Quantity	Package Weight	
			Lbs	Kg
D04099	Signal Mount, 1-1/2" NPT	25/box	19.4	8.8
D04599	Narrow Back Signal Mount, 1-1/2" NPT	25/box	18.3	8.3

- Attach to pole with 3/4" Ultra-Lok®, BAND-FAST™ or BAND-IT® Band.
- Radius of standard Signal Mount accommodates a large range of pole diameters.
- Narrow Back Signal Mount can be used on small diameter poles or for mounting on poles with flat surfaces.



D51089 Mounting Plate



BAND-IT® Bolt/Clamp



Signal Mounts

COLOR-IT™

Polyester

COLOR-IT™ coatings are available in a variety of colors and types providing superior performance and manufactured with your specific application in mind. Whether you are color-matching decorative light poles, identifying materials, or matching existing hardware on specific projects, COLOR-IT™ has the right coating for your project needs. Products coated with COLOR-IT™ work with standard banding tools.



COLOR-IT™

BAND-IT Can Match Any Color. Call for Quote.

Identification Systems

Print your own tags on 304 or 316 stainless steel and apply with Tie-Lok® Ties. Tag imprinter is available with a choice of character sizes. Imprinter with character wheel weighs 29.5 lbs. (13.4kg).

ID Tag Imprinter Tool

Part No.	Tool supplied with:
ID2026	1/16" character wheel
ID2006	3/32" character wheel
ID2036	1/8" character wheel
ID2046	3/16" character wheel
ID2056	1/4" character wheel

Optional Letter Dial Kits

Part No.	Kit supplied with:
ID2816	1/16" character wheel
ID2906	3/32" character wheel
ID2826	1/8" character wheel
ID2836	3/16" character wheel
ID2846	1/4" character wheel

ID2859 ID Guide Accessory

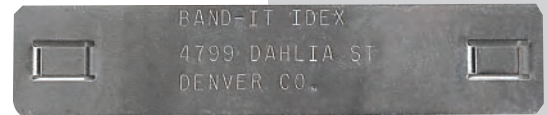
Fixture that enables imprinting on Stainless Steel Bands up to 3/4" x 0.030". Weight: 0.5 Lbs. (.02 Kg)

ID Tags

Part No.	Material*	Height	Length	Thickness		Package Quantity	Package Weight	
				In	mm		Lb	Kg
ID1009	304 SS	0.75	2.0	0.015	0.38	100/box	0.5	0.2
ID1029	304 SS	0.75	3.5	0.015	0.38	100/box	0.8	0.4
ID1019	304 SS	1.50	2.5	0.015	0.38	100/box	1.2	0.6
ID4409	316 SS	0.75	2.0	0.015	0.38	100/box	0.5	0.2
ID4429	316 SS	0.75	3.5	0.015	0.38	100/box	0.8	0.4
ID4419	316 SS	1.50	2.5	0.015	0.38	100/box	1.2	0.6



ID Tag Imprinter Tool



ID1029

Custom Embossed Tags

Part No.	Material*	Height	Length	Thickness		Package Quantity	Package Weight	
				In	mm		Lbs	Kg
ID1039	304 SS	0.75	2.0	0.015	0.38	each	0.1	0.1
ID1059	304 SS	0.75	3.5	0.015	0.38	each	0.1	0.1
ID1049	304 SS	1.50	2.5	0.015	0.38	each	0.2	0.1
ID4609	316 SS	0.75	2.0	0.015	0.38	each	0.1	0.1
ID4629	316 SS	0.75	3.5	0.015	0.38	each	0.1	0.1
ID4619	316 SS	1.50	2.5	0.015	0.38	each	0.2	0.1

Customized Embossed Tags available with 1/8" lettering only.



ID1049



ID1039

Stainless Steel Tape Embossing System

Part No.	Description	Package Quantity	Package Weight	
			Lbs	Kg
ID4002	Stainless Steel Tape Embossing Tool includes 2 rolls of SS tape	each	2.6	1.2
ID4059	304 SS Tape Roll for Embossing Tool, 1/2" x 21' x 0.005"	each	0.2	0.4

With the portable tape embossing tool and a roll of stainless steel tape, you can quickly and easily produce I.D. tags with 3/16" letter size which can be attached with your choice of BAND-IT® ties.

ID Kit ID3009 - An assortment of blank ID tags to use with the ID Tagging System. Also, includes various Tie-Lok® ties and Tie-Lok® tool for tag fastening.

- Package Weight: 22.7 Lbs (10.3 Kg)
- Kit Contains: 1-A92079, 2-ID1029, 1-ID1019, 1-ID1009, 1-AS2119, 2-AS2129, 1-AS2139.



ID4002



ID Kit ID3009



Custom Embossing Factory Service

*BAND-IT reserves the right to substitute material with equal or better corrosion resistance and/or mechanical specifications.



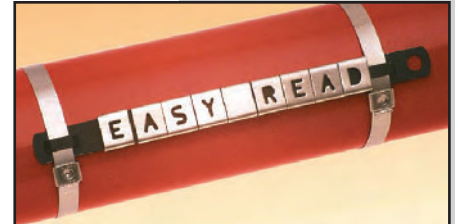
EASY READ Identification Systems

- 316 Stainless Steel.
- Easy to read in dim light and inaccessible places.
- Complete range of individual letters, numbers, and symbols.
- EASY CARRIERS are fastened with a variety of BAND-IT® cable ties.
- Slide directly onto cable ties to create a self-contained wrap tag.
- EASY STRIPS are used to create your own carrier in multiple colors for identification.
- Contact us for color availability.

EASY READ Characters

Part No.	Description	Package Quantity	Package Weight	
			Lbs.	Kg
AE0109	EASY A	100/bag	0.3	0.2
AE0119	EASY B	100/bag	0.3	0.2
AE0129	EASY C	100/bag	0.3	0.2
AE0139	EASY D	100/bag	0.3	0.2
AE0149	EASY E	100/bag	0.3	0.2
AE0159	EASY F	100/bag	0.3	0.2
AE0169	EASY G	100/bag	0.3	0.2
AE0179	EASY H	100/bag	0.3	0.2
AE0189	EASY I, 1	100/bag	0.3	0.2
AE0199	EASY J	100/bag	0.3	0.2
AE0209	EASY K	100/bag	0.3	0.2
AE0219	EASY L, 7	100/bag	0.3	0.2
AE0229	EASY M, W	100/bag	0.3	0.2
AE0239	EASY N	100/bag	0.3	0.2
AE0249	EASY O	100/bag	0.3	0.2
AE0259	EASY P	100/bag	0.3	0.2
AE0269	EASY Q	100/bag	0.3	0.2
AE0279	EASY R	100/bag	0.3	0.2
AE0289	EASY S	100/bag	0.3	0.2
AE0299	EASY T	100/bag	0.3	0.2
AE0309	EASY U	100/bag	0.3	0.2
AE0319	EASY V	100/bag	0.3	0.2
AE0329	EASY X	100/bag	0.3	0.2
AE0339	EASY Y	100/bag	0.3	0.2
AE0349	EASY Z.	100/bag	0.3	0.2
AE0379	EASY 2	100/bag	0.3	0.2
AE0389	EASY 3	100/bag	0.3	0.2
AE0399	EASY 4	100/bag	0.3	0.2
AE0409	EASY 5	100/bag	0.3	0.2
AE0419	EASY 6, 9	100/bag	0.3	0.2
AE0429	EASY 8	100/bag	0.3	0.2
AE0359	EASY Minus/Hyphen	100/bag	0.3	0.2
AE0369	EASY Blank	100/bag	0.3	0.2
AE0469	EASY Plus +	100/bag	0.3	0.2
AE0479	EASY Earth ±	100/bag	0.3	0.2
AE0489	EASY Sine ~	100/bag	0.3	0.2
AE0499	EASY Slash /	100/bag	0.3	0.2

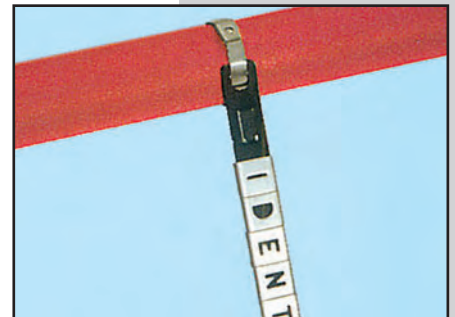
EASY CARRIERS can be attached with any 1/4" tie. (Tie-Lok® shown)



EASY READ characters slide onto any 3/8" tie. (Multi-Lok tie left, BAND-IT® tie right)



Pre-punched hole or Band slot in EASY CARRIER allows insertion of Mini Tie-Lok® to make a flag tag.

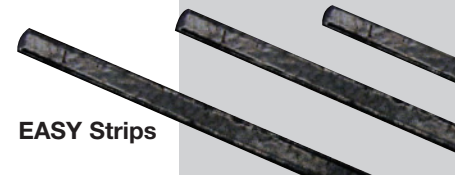


Carriers and Strips

Part No.	Description	Width		Length		Package Quantity	Package Weight	
		In	mm	In	mm		In	mm
AE0439	EASY CARRIER 6	0.380	10	3.6	93	100/bag	0.8	0.4
AE0449	EASY CARRIER 10	0.380	10	5.1	131	100/bag	1.3	0.6
AE0459	EASY CARRIER 16	0.380	10	7.3	188	100/bag	1.5	0.7
AE0509	EASY STRIP Black	0.380	10	4.2	108	100/bag	1.0	0.5
AE0519	EASY STRIP Black	0.380	10	5.7	146	100/bag	1.4	0.6
AE0529	EASY STRIP Black	0.380	10	8.0	203	100/bag	1.9	0.9

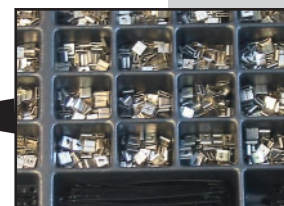
EASY STRIPS are also available coated in PPA 571 in a variety of colors. Contact us.

EASY CARRIERS are available in black Nylon 11 coated Stainless Steel only.



EASY READ Kit AE0609 - An assortment of characters, carriers, and strips in a convenient carry case.

- Weight: 5.60 Lbs (2.54 Kg).
- Kit includes: Carrying case, 50 of each character, carriers and strips.



Stainless Steel Ties

Bundle, Tie or Fasten with a wide variety of locking styles to meet your application needs.

Cable Tie Selection Guide

Material	Tie-Lok® 201 SS 304 SS 316 SS	Ultra-Lok® 201 SS	Ball-Lok 304 SS 316 SS	Multi-Lok 304 SS 316 SS	BAND-IT® SS	Self-Lok® 304 SS 316 SS	Band-Lok® 201 SS	Tie-Dex® 304 SS
Coating	No	No	Nylon 11	Nylon 11	Nylon 11	No	No	No
Releasable	No	No	No	No	Yes	No	No	No
Tool Required	Yes	Yes	No	No	No	No	Yes	Yes
Hand Tool	A91079/A92079	A94079	K50289	M50389	AE2018	K50289	A95079	A40199/A30199
Self-Locking	No	No	Yes	Yes	No	Yes	No	No

BAND-IT is proud to deliver a complete selection of strong, corrosion-resistant ties. The buckle is part of the tie, making installation easier. Use the helpful table above to determine the correct cable ties for your specific application.

Tie-Lok® and Mini Tie-Lok® Ties

- Smooth ID ties with low profile.
- A strong patented dimple lock.
- Available in 3 widths: .177, .250, .375.
- Provides fast, reliable, consistent clamp.
- Great for bundling cable.
- Tie-Lok® Tie applied with A92079 hand tool or IT1000 pneumatic tool.
- Tie-Lok® Mini Tie applied with A91079 hand tool or IT0750 pneumatic tool.
- Tie-Lok® Tie .375" width applied with TL3800 hand tool.



Ultra-Lok® Ties

- Smooth ID Ties with low profile.
- Stainless Steel tie with Ultra-Lok® locking style.
- Provides fast, reliable, consistent clamp.
- Great for bundling cable.
- Applied with A94079 hand tool or IT3000 pneumatic tool.



Ball-Lok

- Self-locking ties.
- Available in two widths: 0.180" and 0.310".
- Speedy application.
- Selectively coated Nylon 11 or uncoated styles available.
- Apply by hand or with K50289 hand tool.



Multi-Lok

- Self-locking ties.
- Available in two widths: 0.270" and 0.470".
- Fast, easy application.
- Install by hand or with a variety of tools.
- Unique multiple locking system.
- Coated with Nylon 11 or uncoated.
- Apply by hand or with M50389, AE2009 or AE2018 hand tools.



BAND-IT® Ties

200/300 SS

- Reusable tie available in 3 widths: 1/4", 3/8", and 5/8".
- Unique buckle design.
- Coated with Nylon 11.
- The only Tie capable of a double wrap for special strength requirements.
- Apply by hand or with AE2009 or AE2018 hand tools.

316 SS **NEW ITEM**

- Reusable tie available in 2 widths: 1/4" and 3/8".
- Low Smoke, Zero Halogen, PPA Coated for superior corrosion resistance.
- 316 Stainless Steel.
- For cable bundling in harsh environments.
- Thick coating protects cable/hands.
- Vibration proof.



Self-Lok® Ties

- High strength.
- Low-profile buckle design.
- Apply by hand or with K50289 hand tool.



Band-Lok® Ties

- Economical, low profile clamp.
- Apply on irregular shapes.
- 1 piece tie with built in buckle.
- Apply with A95079 hand tool.



UL Listed, DNV Approved



TL3800 Tie-Lok® Tool
New for 3/8"
Tie-Lok® only



A92079 Tie-Lok® II Tool
Adjustable tension, forms
lock, cuts off tail.



Tie-Lok® Tie



A91079 Mini Tie-Lok® II Tool
Adjustable tension, forms
lock, cuts off tail.

Tie-Lok® Tie

Part No.	Material*	Width		Length		Thickness		Maximum Diameter Single Wrap		Minimum Loop Tensile Strength (Lbs)	Package Quantity	Package Weight		Application Tools
		In	mm	In	mm	In	mm	In	mm			Lbs	Kg	
AS2119	304 SS	1/4	6.4	10.0	254	0.015	0.38	2	51	250	100/bag	1.2	0.6	A92079 IT1000
AS2129	304 SS	1/4	6.4	16.5	419	0.015	0.38	4	101	250	100/bag	1.8	0.9	
AS2139	304 SS	1/4	6.4	22.5	572	0.015	0.38	6	152	250	100/bag	2.6	1.2	
AS2149	304 SS	1/4	6.4	29.0	737	0.015	0.38	8	203	250	100/bag	3.3	1.5	
AS2159	304 SS	1/4	6.4	35.0	889	0.015	0.38	10	254	250	100/bag	3.9	1.8	
AS4119	316 SS	1/4	6.4	10.0	254	0.015	0.38	2	51	250	100/bag	1.2	0.6	
AS4129	316 SS	1/4	6.4	16.5	419	0.015	0.38	4	101	250	100/bag	1.8	0.9	
AS4139	316 SS	1/4	6.4	22.5	572	0.015	0.38	6	152	250	100/bag	2.6	1.2	
AS4149	316 SS	1/4	6.4	29.0	737	0.015	0.38	8	203	250	100/bag	3.3	1.5	
AS4159	316 SS	1/4	6.4	35.0	889	0.015	0.38	10	254	250	100/bag	3.9	1.8	
AS6219	304 SS	3/8	9.6	7.2	184	0.020	0.51	1.5	40	350	100/bag	1.9	0.9	IT6000 TL3800
AS6229	304 SS	3/8	9.6	10.0	254	0.020	0.51	2	51	350	100/bag	2.6	1.2	
AS6239	304 SS	3/8	9.6	16.0	406	0.020	0.51	4	101	350	100/bag	3.9	1.8	
AS6249	304 SS	3/8	9.6	22.5	572	0.020	0.51	6	152	350	100/bag	5.3	2.4	
AS6259	304 SS	3/8	9.6	29.0	737	0.020	0.51	8	203	350	100/bag	6.7	3.1	

UL Listed, DNV Approved

Mini Tie-Lok® Tie

Part No.	Material*	Width		Length		Thickness		Maximum Diameter Single Wrap		Minimum Loop Tensile Strength (Lbs)	Package Quantity	Package Weight		Application Tools
		In	mm	In	mm	In	mm	In	mm			Lbs	Kg	
AS2219	304 SS	0.177	4.5	7.0	165	0.015	0.38	1	25	100	100/bag	0.7	0.3	A91079 IT0750
AS2229	304 SS	0.177	4.5	10.0	254	0.015	0.38	2	51	100	100/bag	0.9	0.4	
AS2239	304 SS	0.177	4.5	16.0	406	0.015	0.38	4	102	100	100/bag	1.4	0.7	
AS2249	304 SS	0.177	4.5	22.5	572	0.015	0.38	6	152	100	100/bag	1.9	0.9	
AS2259	304 SS	0.177	4.5	29.0	737	0.015	0.38	8	203	100	100/bag	2.4	1.1	
AS4219	316 SS	0.177	4.5	7.0	165	0.015	0.38	1	25	100	100/bag	0.7	0.3	
AS4229	316 SS	0.177	4.5	10.0	254	0.015	0.38	2	51	100	100/bag	0.9	0.4	
AS4239	316 SS	0.177	4.5	16.0	406	0.015	0.38	4	102	100	100/bag	1.4	0.7	
AS4249	316 SS	0.177	4.5	22.5	572	0.015	0.38	6	152	100	100/bag	1.9	0.9	
AS4259	316 SS	0.177	4.5	29.0	737	0.015	0.38	8	203	100	100/bag	2.4	1.1	

*BAND-IT reserves the right to substitute material with equal or better

CE Marked

Ultra-Lok® Tie

Part No.	Material*	Width		Length		Thickness		Maximum Diameter Single Wrap	Minimum Loop Tensile Strength (Lbs)	Package Quantity	Package Weight		Application Tools
		In	mm	In	mm	In	mm				Lbs	Kg	
AU2029	201 SS	1/4	6.4	8	203	0.015	0.38	1.5 38	400	100/bag	1.0	0.5	A94079 IT3000
AU2039	201 SS	1/4	6.4	10	254	0.015	0.38	2.5 63	400	100/bag	1.2	0.6	
AU2049	201 SS	1/4	6.4	12	305	0.015	0.38	3.0 76	400	100/bag	1.4	0.7	
AU2059	201 SS	1/4	6.4	14	356	0.015	0.38	3.8 96	400	100/bag	1.6	0.8	
AU2069	201 SS	1/4	6.4	16	406	0.015	0.38	4.5 114	400	100/bag	1.9	0.9	
AU2079	201 SS	1/4	6.4	19	483	0.015	0.38	5.4 137	400	100/bag	2.2	1.0	
AU2089	201 SS	1/4	6.4	24	610	0.015	0.38	7.0 177	400	100/bag	2.7	1.3	
AU2099	201 SS	1/4	6.4	29	737	0.015	0.38	8.0 215	400	100/bag	3.3	1.5	
AU2159	201 SS	1/4	6.4	35	889	0.015	0.38	10.5 266	400	100/bag	3.9	1.8	



A94079 Ultra-Lok® Tool
Adjustable tension, forms lock, cuts off tail.



Ultra-Lok® Tie

CE Marked, DNV Approved, Coast Guard Approved

Ball-Lok Tie

Part No.	Material*	Width		Length		Base Material Thickness		Maximum Diameter Single Wrap	Minimum Loop Tensile Strength (Lbs)	Package Quantity	Package Weight		Application Tools	
		In	mm	In	mm	In	mm				Lbs	Kg		
KE1128	-	304 SS	0.180	4.6	7.9	201	0.010	0.25	2.0 50	200	100/bag	0.6	0.3	K50289 or by hand
KE1138	-	304 SS	0.180	4.6	10.2	259	0.010	0.25	2.7 69	200	100/bag	0.7	0.4	
KE1148	-	304 SS	0.180	4.6	14.2	360	0.010	0.25	4.0 102	200	100/bag	0.9	0.5	
KE1158	-	304 SS	0.180	4.6	20.4	520	0.010	0.25	6.0 152	200	100/bag	1.3	0.6	
KE1168	-	304 SS	0.180	4.6	26.8	679	0.010	0.25	8.0 203	200	100/bag	1.8	0.8	
KE1178	-	304 SS	0.180	4.6	33.0	838	0.010	0.25	10.0 254	200	100/bag	2.1	1.0	
KE1188	-	304 SS	0.180	4.6	42.0	1067	0.010	0.25	12.0 305	200	100/bag	2.4	1.1	
KE0128	-	316 SS	0.180	4.6	7.9	201	0.010	0.25	2.0 50	200	100/bag	0.6	0.3	
KE0138	-	316 SS	0.180	4.6	10.2	259	0.010	0.25	2.7 69	200	100/bag	0.7	0.4	
KE0148	-	316 SS	0.180	4.6	14.2	360	0.010	0.25	4.0 102	200	100/bag	0.9	0.5	
KE0158	-	316 SS	0.180	4.6	20.4	520	0.010	0.25	6.0 152	200	100/bag	1.3	0.6	
KE0168	-	316 SS	0.180	4.6	26.8	679	0.010	0.25	8.0 203	200	100/bag	1.8	0.8	
KE0178	-	316 SS	0.180	4.6	33.0	838	0.010	0.25	10.0 254	200	100/bag	2.1	1.0	
KE0188	-	316 SS	0.180	4.6	42.0	1067	0.010	0.25	12.0 305	200	100/bag	2.4	1.1	
KE1328	-	304 SS	0.310	7.9	7.9	201	0.010	0.25	2.0 50	300	100/bag	1.0	0.5	
KE1338	-	304 SS	0.310	7.9	10.2	259	0.010	0.25	2.7 69	300	100/bag	1.3	0.6	
KE1348	-	304 SS	0.310	7.9	14.2	360	0.010	0.25	4.0 102	300	100/bag	1.7	0.8	
KE1358	-	304 SS	0.310	7.9	20.4	520	0.010	0.25	6.0 152	300	100/bag	2.2	1.1	
KE1368	-	304 SS	0.310	7.9	26.8	679	0.010	0.25	8.0 203	300	100/bag	2.9	1.3	
KE1378	-	304 SS	0.310	7.9	33.0	838	0.010	0.25	10.0 254	300	100/bag	3.5	1.6	
KE1388	-	304 SS	0.310	7.9	42.0	1067	0.010	0.25	12.0 305	300	100/bag	4.6	2.1	
KE0328	-	316 SS	0.310	7.9	7.9	201	0.010	0.25	2.0 50	300	100/bag	1.0	0.5	
KE0338	-	316 SS	0.310	7.9	10.2	259	0.010	0.25	2.7 69	300	100/bag	1.3	0.6	
KE0348	-	316 SS	0.310	7.9	14.2	360	0.010	0.25	4.0 102	300	100/bag	1.7	0.8	
KE0358	-	316 SS	0.310	7.9	20.4	520	0.010	0.25	6.0 152	300	100/bag	2.2	1.1	
KE0368	-	316 SS	0.310	7.9	26.8	679	0.010	0.25	8.0 203	300	100/bag	2.9	1.3	
KE0378	-	316 SS	0.310	7.9	33.0	838	0.010	0.25	10.0 254	300	100/bag	3.5	1.6	
KE0388	-	316 SS	0.310	7.9	42.0	1067	0.010	0.25	12.0 305	300	100/bag	4.6	2.1	
-	KE0828	316 SS	0.310	7.9	7.9	201	0.010	0.25	2.0 50	300	100/bag	1.2	0.6	
-	KE0848	316 SS	0.310	7.9	14.2	360	0.010	0.25	4.0 102	300	100/bag	1.8	0.9	
-	KE0858	316 SS	0.310	7.9	20.4	520	0.010	0.25	6.0 152	300	100/bag	2.5	1.2	



K50289 Ball-Lok Tool
Adjustable tension, forms lock, cuts off tail.



Ball-Lok Ties



AE2009 Cable Tie Tensioner

UL listed, CE Marked, DNV Approved

Multi-Lok Tie

Part No.	Material*	Width		Length		Thickness		Maximum Diameter Single Wrap	Minimum Loop Tensile Strength (Lbs)	Package Quantity	Package Weight		Application Tools				
		In	mm	In	mm	Uncoated In	Coated In				Lbs	Kg					
AE6019	AE6119	316 SS	0.270	6.9	6.0	150	0.011	0.28	0.018	0.46	1.3	33	250	100/bag	0.7	0.3	AE2009 AE2018 M50389 or by hand
AE6029	AE6129	316 SS	0.270	6.9	9.0	225	0.011	0.28	0.018	0.46	2.2	57	250	100/bag	0.9	0.5	
AE6039	AE6139	316 SS	0.270	6.9	12.0	300	0.011	0.28	0.018	0.46	3.2	81	250	100/bag	1.3	0.6	
AE6049	AE6149	316 SS	0.270	6.9	18.0	450	0.011	0.28	0.018	0.46	5.1	129	250	100/bag	1.8	0.8	
AE6059	AE6159	316 SS	0.270	6.9	24.0	610	0.011	0.28	0.018	0.46	7.1	180	250	100/bag	2.6	1.2	
AE7019	AE7119	316 SS	0.470	11.9	6.0	150	0.011	0.28	0.018	0.46	1.3	33	400	100/bag	1.1	0.5	
AE7029	AE7129	316 SS	0.470	11.9	9.0	225	0.011	0.28	0.018	0.46	2.2	57	400	100/bag	1.7	0.8	
AE7039	AE7139	316 SS	0.470	11.9	12.0	300	0.011	0.28	0.018	0.46	3.2	81	400	100/bag	2.2	1.0	
AE7049	AE7149	316 SS	0.470	11.9	18.0	450	0.011	0.28	0.018	0.46	5.1	129	400	100/bag	3.0	1.4	
AE7059	AE7159	316 SS	0.470	11.9	24.0	610	0.011	0.28	0.018	0.46	7.1	180	400	100/bag	4.3	2.0	



M50389 Multi-Lok Hand Tool
Adjustable tension, forms lock, cuts off tail.



Multi-Lok Ties

*BAND-IT reserves the right to substitute material with equal or better corrosion resistance and/or mechanical specifications.



UL listed, DNV Approved, CE Marked, Coast Guard Approved (5/8" widths)

BAND-IT® Tie

200/300 Stainless Steel BAND-IT® Tie Nylon 11 coated

Part No.	Material* Coated	Width		Length		Thickness Coated		Maximum Diameter Single Wrap		Minimum Loop Tensile Strength	Package Quantity	Package Weight		Application Tools
		In	mm	In	mm	In	mm	In	mm			Lbs	Kg	
AA1118	200/300SS	1/4	6.4	6.0	152	0.026	0.66	1.5	38	75/300**	100/bag	1.4	0.6	AE2018 AE2009 C07569 or by hand
AA1128	200/300SS	1/4	6.4	9.0	229	0.026	0.66	2.5	63	75/300**	100/bag	1.8	0.8	
AA1138	200/300SS	1/4	6.4	12.0	305	0.026	0.66	3.4	86	75/300**	100/bag	2.1	1.0	
AA1148	200/300SS	1/4	6.4	18.0	457	0.026	0.66	5.4	137	75/300**	100/bag	3.0	1.4	
AA1158	200/300SS	1/4	6.4	24.0	610	0.026	0.66	7.3	185	75/300**	100/bag	3.7	1.7	
AA3118	200/300SS	3/8	9.6	6.0	152	0.026	0.66	1.5	38	100/500**	100/bag	1.8	0.8	
AA3128	200/300SS	3/8	9.6	9.0	229	0.026	0.66	2.5	63	100/500**	100/bag	2.5	1.1	
AA3138	200/300SS	3/8	9.6	12.0	305	0.026	0.66	3.4	86	100/500**	100/bag	3.1	1.4	
AA3148	200/300SS	3/8	9.6	18.0	457	0.026	0.66	5.4	137	100/500**	100/bag	4.4	2.2	
AA3158	200/300SS	3/8	9.6	24.0	610	0.026	0.66	7.3	185	100/500**	100/bag	6.6	3.0	
AA3168	200/300SS	3/8	9.6	30.0	762	0.026	0.66	9.1	231	100/500**	100/bag	7.0	3.2	
AA3178	200/300SS	3/8	9.6	36.0	914	0.026	0.66	11.0	280	100/500**	100/bag	8.3	3.8	
AA8638	200/300SS	5/8	15.9	12.0	305	0.044	1.1	3.4	86	200/800**	100/bag	5.6	2.5	
AA8648	200/300SS	5/8	15.9	18.0	457	0.044	1.1	5.4	137	200/800**	100/bag	7.6	3.5	
AA8658	200/300SS	5/8	15.9	24.0	610	0.044	1.1	7.3	185	200/800**	100/bag	9.7	4.4	
AA8668	200/300SS	5/8	15.9	30.0	762	0.044	1.1	9.1	231	200/800**	100/bag	11.9	5.4	
AA8678	200/300SS	5/8	15.9	36.0	914	0.044	1.1	11.0	280	200/800**	100/bag	13.9	6.4	

Material thickness includes Nylon 11 coating - Base material thicknesses uncoated: 1/4" is 0.015"; 3/8" is 0.015"; 5/8" is 0.020
PART NUMBER CHANGE - AA Series (Nylon 11 BAND-IT Ties) formerly AE part number series.

316 Stainless Steel BAND-IT® Tie PPA571 coated **NEW ITEM**

Part No.	Material* Coated	Width		Length		Thickness Coated		Maximum Diameter Single Wrap		Minimum Loop Tensile Strength	Package Quantity	Package Weight		Application Tools
		In	mm	In	mm	In	mm	In	mm			Lbs	Kg	
AE1118	316SS	1/4	6.4	6.0	152	0.045	1.1	1.5	38	75/300**	100/bag	1.4	0.6	AE2018 AE2009 C07569 or by hand
AE1128	316SS	1/4	6.4	9.0	229	0.045	1.1	2.5	63	75/300**	100/bag	1.8	0.8	
AE1138	316SS	1/4	6.4	12.0	305	0.045	1.1	3.4	86	75/300**	100/bag	2.1	1.0	
AE1148	316SS	1/4	6.4	18.0	457	0.045	1.1	5.4	137	75/300**	100/bag	3.0	1.4	
AE1158	316SS	1/4	6.4	24.0	610	0.045	1.1	7.3	185	75/300**	100/bag	3.7	1.7	
AE3118	316SS	3/8	9.6	6.0	152	0.045	1.1	1.5	38	100/500**	100/bag	1.8	0.8	
AE3128	316SS	3/8	9.6	9.0	229	0.045	1.1	2.5	63	100/500**	100/bag	2.5	1.1	
AE3138	316SS	3/8	9.6	12.0	305	0.045	1.1	3.4	86	100/500**	100/bag	3.1	1.4	
AE3148	316SS	3/8	9.6	18.0	457	0.045	1.1	5.4	137	100/500**	100/bag	4.4	2.2	
AE3158	316SS	3/8	9.6	24.0	610	0.045	1.1	7.3	185	100/500**	100/bag	6.6	3.0	
AE3168	316SS	3/8	9.6	30.0	762	0.045	1.1	9.1	231	100/500**	100/bag	7.0	3.2	
AE3178	316SS	3/8	9.6	36.0	914	0.045	1.1	11.0	280	100/500**	100/bag	8.3	3.8	

**Single/Double Wrapped

Material thickness includes PPA coating - Base material thicknesses uncoated: 1/4" is 0.015"; 3/8" is 0.015"; 5/8" is 0.020
Low smoke, non-toxic, zero halogen, PPA coated with superior corrosion resistance.

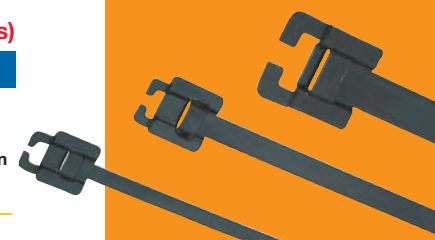
UL listed

Self-Lok® Tie

Part No.	Material*	Width		Length		Thickness		Maximum Diameter Single Wrap		Minimum Loop Tensile Strength	Package Quantity	Package Weight		Application Tools
		In	mm	In	mm	In	mm	In	mm			Lbs	Kg	
K01199	304 SS	3/16	4.8	5.4	137	0.010	0.25	1.0	25	150	100/bag	0.4	0.2	K50289 or by hand
K01299	304 SS	3/16	4.8	8.4	213	0.010	0.25	2.0	51	150	100/bag	0.5	0.2	
K01399	304 SS	3/16	4.8	10.9	276	0.010	0.25	2.7	69	150	100/bag	0.7	0.3	
K01499	304 SS	3/16	4.8	14.9	378	0.010	0.25	4.0	102	150	100/bag	0.9	0.5	
K01599	304 SS	3/16	4.8	20.9	530	0.010	0.25	6.0	153	150	100/bag	1.2	0.6	
K01699	304 SS	3/16	4.8	27.4	695	0.010	0.25	8.0	203	150	50/bag	0.8	0.4	
K01799	304 SS	3/16	4.8	33.4	848	0.010	0.25	10.0	254	150	50/bag	1.0	0.5	
K01899	304 SS	3/16	4.8	42.4	1076	0.010	0.25	12.0	305	150	50/bag	1.2	0.6	
K01999	304 SS	3/16	4.8	47.4	1203	0.010	0.25	14.0	356	150	50/bag	1.3	0.6	
K04199	316 SS	3/16	4.8	5.4	137	0.010	0.25	1.0	25	150	100/bag	0.4	0.2	
K04299	316 SS	3/16	4.8	8.4	213	0.010	0.25	2.0	51	150	100/bag	0.5	0.3	
K04399	316 SS	3/16	4.8	10.9	276	0.010	0.25	2.7	69	150	100/bag	0.7	0.4	
K04499	316 SS	3/16	4.8	14.9	378	0.010	0.25	4.0	102	150	100/bag	0.9	0.5	
K04599	316 SS	3/16	4.8	20.9	530	0.010	0.25	6.0	152	150	100/bag	1.2	0.6	
K04699	316 SS	3/16	4.8	27.4	695	0.010	0.25	8.0	203	150	50/bag	0.8	0.4	
K04799	316 SS	3/16	4.8	33.4	848	0.010	0.25	10.0	254	150	50/bag	1.0	0.5	
K04899	316 SS	3/16	4.8	42.4	1076	0.010	0.25	12.0	305	150	50/bag	1.2	0.6	
K04999	316 SS	3/16	4.8	47.4	1203	0.010	0.25	14.0	356	150	50/bag	1.3	0.6	

Band-Lok® Tie

Part No.	Material*	Width		Length		Thickness		Maximum Diameter Single Wrap		Minimum Loop Tensile Strength (Lbs)	Package Quantity	Package Weight		Application Tools
		In	mm	In	mm	In	mm	In	mm			Lbs	Kg	
BL2119	201 SS	5/16	7.9	10.0	254	0.015	0.38	2.0	51	250	100/bag	1.4	0.7	A95079
BL2129	201 SS	5/16	7.9	16.0	406	0.015	0.38	3.5	89	250	100/bag	2.3	1.1	
BL2139	201 SS	5/16	7.9	19.0	482	0.015	0.38	5.0	127	250	100/bag	3.1	1.5	
BL2149	201 SS	5/16	7.9	27.0	686	0.015	0.38	7.0	178	250	100/bag	3.9	1.8	
BL2159	201 SS	5/16	7.9	34.0	864	0.015	0.38	9.0	229	250	100/bag	4.7	2.2	



BAND-IT® Ties
Nylon 11 coated



Introducing
extreme corrosion
resistant BAND-IT® Ties
PPA571 coating



AE2018 Tensioning Hook



K50289 Ball-Lok
Adjustable tension,
forms lock, cuts off tail.



Self-Lok® Tie



A95079 Band-Lok® Tool
Adjustable tension, forms
lock, cuts off tail.



Band-Lok® Tie

Application Engineering

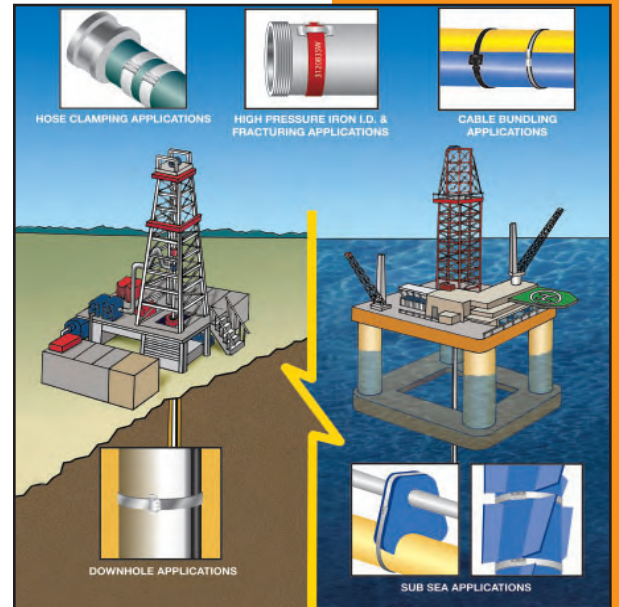
Application Engineering Services

BAND-IT provides application engineering services for customers in any industry to understand and specify our quality solutions and products. With over 70 years of experience in stainless steel clamping, banding, bundling, fastening, and identification solutions, our engineers can modify standard clamping systems or develop new solutions for your specific project needs. From customized clamp selection to in-depth field testing and training, BAND-IT's engineered applications team can meet the exacting requirements for your specialized needs.



Why BAND-IT® Quality Engineered Solutions?

- ISO 9001, ISO 14001, & TS 16949 Registration for Excellence in Environmental and Integrated Management Systems.
- State of the art high speed application tools and complete product line.
- Unrivalled R&D and engineering support.
- Worldwide Manufacturing and distribution facilities.
- On call Engineered Applications Team to meet your project needs.
- Stainless Steel Clamping Solutions:
 - High strength.
 - Easily conforms to any shape.
 - Uniquely able to securely fasten dissimilar materials, odd shapes and difficult objects.
 - Withstands extreme temperatures and corrosive conditions.
 - Vibration resistant.

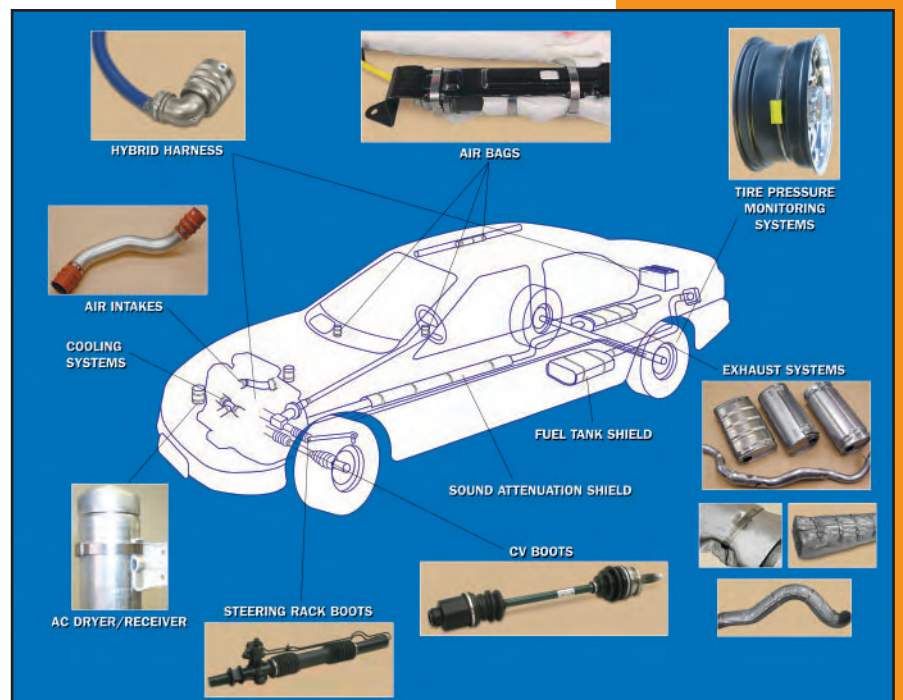


Energy & Marine Solutions

BAND-IT's Custom Engineered Solutions can be found in many industries, including:

- Agriculture
- Civil Infrastructure
- Construction
- Manufacturing
- Oil & Gas
- Chemical
- Power Distribution
- Transportation
- and many more

Call today and find out why BAND-IT is the world's leader in quality engineered band clamping systems and solutions!



Automotive Solutions



“IT-Series” Heavy-Duty Pneumatic Production Tools Easy, high-speed, uniform applications.

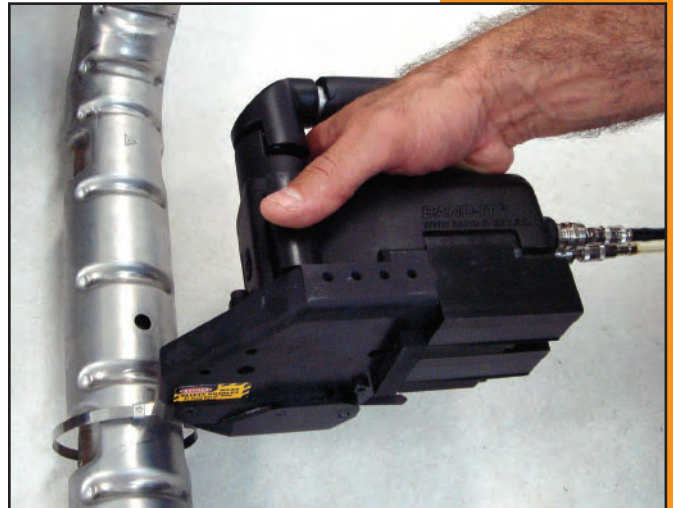
The IT series heavy-duty pneumatic tools provide fast and easy application of stainless steel ties and clamps with extended service life and low maintenance.

Use the “IT-Series” tool when:

- Clamp volume demands a production tool.
- Installation time should be minimized.
- Maximum installation uniformity and repeatability are required.
- Operator fatigue must be reduced.
- More time is needed between scheduled tool maintenance and calibration.

“IT-Series” tools feature:

- Can be fixtured into production system.
- Variety of head configurations that allow installation of:
 - 1/4" and 3/8" Tie-Lok®.
 - 1/4" Universal Clamps.
 - 1/4" and 3/8" Jr.® Smooth ID Clamps.
 - 1/4" Ultra-Lok® ties.
 - 1/4" Band-Lok® ties.
 - Tie-Dex® bands.
 - Micro Tie-Dex® bands.
- Ergonomic design for ease of use by hand.
- Heavy-duty cut-off and tensioning components.
- Durable pneumatic system.
- Easy to maintain design.
- Optional data output capability.



IT Series Tools

IT Series Tools

IT0750	For all .177" wide mini Tie-Lok® Ties
IT1000	For all 1/4" Tie-Lok® Ties.
IT2000	For all 1/4" BAND-IT Junior® Clamps.
IT3000	For all 1/4" Ultra-Lok® Ties.
IT4000	For all 1/4" BAND-Lok® Ties.
IT5000	For all 3/8" BAND-IT Junior® Clamps.
IT6000	For all 3/8" Tie-Lok® Ties.

Coming Soon

IT0250	For all .120" wide micro Tie-Dex® Ties
IT0500	For all .240" wide Tie-Dex® Ties

**Contact BAND-IT for assistance to help you choose
the right clamp and IT tool for your application.**

Tie-Dex® Clamping System

Use for fast, reliable, and cost-effective RFI/EMI/EMP Shield Terminations

BAND-IT's patented Tie-Dex® bands provide **highly effective shield terminations** for any size and type of backshell design. Tie-Dex bands have successfully passed rigorous shock, vibration, and thermal cycle testing.

Easy to use Tie-Dex Tools are available as portable hand tools or pneumatic production tools. Unlike other shield termination systems, a single tool applies Tie-Dex bands faster. All Tie-Dex tools can be calibrated.

Tie-Dex clamping systems provide a quick and reliable way of terminating cable shielding for critical applications in aircraft, military vehicles, and other sensitive electronic equipment.



Tie-Dex® Bands



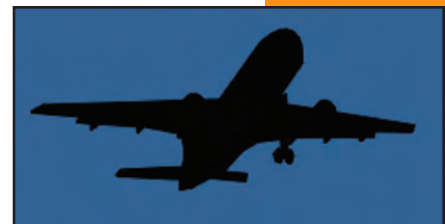
IT Series Tools



A40199 Tie-Dex® II Tool

To protect sensitive equipment, Tie-Dex® is designed to provide these benefits:

- Virtually eliminates RFI/EMI/EMP leakage paths.
- Single tool installation.
- Maintains constant tension under extreme environmental conditions.
- When making repairs, Tie-Dex band clamps install without removing the backshell.
- Clamp small diameters as easily, quickly and reliably as large diameters.
- Can be tensioned to 1/4" in diameter (1/8" for Tie-Dex Micro Band).
- Precalibrated hand tool is lightweight and pocket sized, affording fast braided RFI/EMI/EMP shield termination in the field.
- Maintains tension in high vibration applications.



Tie-Dex® Micro Band

Part No.	Material*	Width		Length		Thickness		Maximum Diameter Double Wrap		Minimum Loop Tensile Strength (Lbs)	Package Quantity	Package Weight	
		In	mm	In	mm	In	mm	In	mm			Lbs	Kg
A31188**	304 SS	0.120	3	8.1	207	0.015	0.38	0.9	23	200	100/box	0.4	0.2
A31189	304 SS	0.120	3	8.1	207	0.015	0.38	0.9	23	200	100/bag	0.4	0.2
A31089	304 SS	0.120	3	14.3	362	0.015	0.38	1.9	48	200	100/bag	0.7	0.4

Tie-Dex® Band

Part No.	Material*	Width		Length		Thickness		Maximum Inside Diameter Double Wrap		Minimum Loop Tensile Strength (Lbs)	Package Quantity	Package Weight	
		In	mm	In	mm	In	mm	In	mm			Lbs	Kg
A10088**	304 SS	0.240	6	14.3	362	0.020	0.51	1.8	46	700	100/box	2.1	1.0
A10089	304 SS	0.240	6	14.3	362	0.020	0.51	1.8	46	700	100/bag	2.1	1.0
A11089	304 SS	0.240	6	18.0	457	0.020	0.51	2.5	64	700	100/bag	2.5	1.1

**Individually coiled

Tie-Dex® II Tool - A40199

Precalibrated tool applies patented Tie-Dex® Bands. Weight: 1.2 Lbs (0.6 Kg).
Use the Calibration Key (A44699) to change calibration.

Micro Tie-Dex® II Tool - A30199

Precalibrated tool applies Tie-Dex® Micro Bands. Weight: 1.3 Lbs (0.6 Kg).
Use the Calibration Key (A44699) to change calibration.

Tie-Dex® II Kit - A49099

Weight: 4.3 Lbs (2.0 Kg).
Kit includes: 1-A40199, 1-A48599, 1-A44699, parts and cutters.

Tie-Dex® Micro Tool Kit - A59099

Weight: 4.6 Lbs (2.0 Kg).
Kit includes: 1-A30199, 1-A47599, 1-A44699, parts and cutters.

Tie-Dex® Gauge - A48599

Weight: 1.0 Lbs (0.5 Kg).
Tension gauge for A40199 tool. Used for verifying preset tension limits.

Micro Tie-Dex® Gauge - A47599

Weight: 1.0 Lbs (0.5 Kg).
Tension gauge for A30199 tool. Used for verifying preset tension limits.

Tie-Dex® Calibration Kit - A50099

Provides fast, easy, accurate calibration of all Tie-Dex® tools without a dynamometer. Kit includes: 1-A50189, 1-A50599, 1-A50699, 1-A46687, 1 Mounting Bracket, 1 Hex Key and a Carrying Case. Weight: 4.3 Lbs (2.0 Kg).

Tie-Dex® Calibration Device - A50189

Weight: 1.2 Lbs (0.5 Kg).



A50189 Tie-Dex® Calibration Device

Tie-Dex® Test Band - A50599

50 test bands. Weight: 0.3 Lbs (0.1 Kg).

Micro Tie-Dex® Test Band - A50699

50 test bands. Weight: 0.1 Lbs (0.06 Kg).



Tie-Dex® Bands



A40199 Tie-Dex® II Tool



A49099 Tie-Dex® II Kit



A50099 Tie-Dex® Calibration Kit

New Electronic Version Coming Soon!

Preformed Clamping Systems

A complete range to meet most application requirements

	Ultra-Lok®	BAND-IT Jr® Smooth ID	Center Punch	Universal Clamp
Material	201 SS 1/4 Hard	316 SS / 201 SS / GCS	201 SS / GCS	201 SS
Diameter Range	1-1/2" - 9"	13/16" - 8"	13/16" - 8"	1" - 4-1/2"
Width	1/2", 3/4"	1/4" - 3/4"	3/8", 5/8"	1/4"
Tool Required	UL4000 UL9010	C00169 with J00169, C00169 with J05069, C00269, IT2000 S35099, S75099	S03869 SM1700 T30069	A92079 A94079 IT1000 IT3000
Strength	Best	Better	Better/Good	Good
Corrosion	Better	Best/Better/Good	Better	Better

BAND-IT offers four Preformed Clamp Systems. Each Clamp System is designed to meet your specific application requirements from the most to the least demanding.

Ultra-Lok® - Designed for quick installation, tightest clamping force, and gap-free inside diameter to minimize leaks. The best choice for demanding applications!

- Unique lock formed under full tension maximizing tightness.
- Lock is thicker and 2-3 times stronger than other preformed clamps.
- Smooth ID design reduces leak paths.
- Lock hood protects lock from snags.
- Double wrapped for additional strength.
- Install Ultra-Lok® clamping systems quickly using portable power tools.



Ultra-Lok®
Preformed Clamp

BAND-IT Jr® Smooth ID - Widest choice of sizes and materials in a leak resistant design. Our most popular clamp!

- Vibration resistant lip wrap lock design. Lock is formed by a simple lever movement. No hammering or crimping.
- Unique buckle nest and smooth ID design reduces leak paths compared to Center Punch Clamps.
- Double wrapped for additional strength.
- Various materials for different corrosive environments.
- Install BAND-IT Jr.® Smooth ID preformed clamps using the C00169 with J00169 adapter C00169 with J05069 heavy duty adapter, C00269, S35099, S75099 or IT compatible tool.



BAND-IT Jr.® Smooth ID
Preformed Clamp

Center Punch - Used in less demanding applications where minimizing leaks and longevity are not critical.

- Lock with impact from a hammer using a conical punch.
- Double wrapped using 201 Stainless Steel or galvanized carbon steel.
- Manufactured with thicker 201 Stainless Steel buckles than competitive clamps to provide added locking strength.
- Not recommended for use with fittings that may crack as a result of impact.
- Install Center Punch clamping systems with the following hand tools: S03869, T30069. Or for 5/8" Center Punch preformed clamps the Pneumatic SM1700 can be used.



Center Punch
Preformed Clamps

Universal Clamp - A single wrap preformed clamp is typically used to clamp boots or sleeves.

- 1/4" band width with inside diameters ranging from 1" to 4.5".
- Not recommended for industrial hose clamping applications.
- Cost effective.
- Lock with a Tie-Lok® hand tool A92079, Ultra-Lok® hand tool A94079, or IT compatible tool.



Universal Preformed
Clamp



SET9000™ Electronic Clamp Installation Tool

Providing the highest level of clamping tension accuracy and repeatability, the SET9000™ has interchangeable heads for use with Ultra-Lok®, BAND-IT Junior® and Center Punch Clamps.

The SET9000™ gives you consistent and accurate hose assemblies every time!



SET9000™

SET9000™ Tool

Part No.	Description	Package Quantity	Package Weight	
			Lbs	Kg
SET9000	Electronic Clamp Installation Tool	each	235	107
M18098	Ultra-Lok® head for SET9000™	each	1.53	.69
M16098	Junior® head for SET9000™	each	1.24	.56
M17598	Center Punch head for SET9000™	each	7.17	3.25

Clamp Types:

- 1/2" and 3/4" Ultra-Lok® (page 32).
- 3/8", 1/2", 5/8" and 3/4" BAND-IT Jr.® Smooth ID (pages 33-34).
- 5/8" Center Punch (up to 6 1/2" diameter) (page 35).

Power Source:

110-120 VAC, 60hz 5A MAX.

Features:

- Unrivalled accuracy and repeatability.
- Automatic cut-off.
- Pre-set and variable tension setting.
- Electronically controlled clamp installation.
- 22 inch single-pull take-up.
- Automatic tail ejection.
- Interchangeable Ultra-Lok®, Junior® and Center Punch heads.
- Heavy duty gearing.
- All electric power.
- Clamp counter.
- Real-time status display.



M18098 Ultra-Lok® Head



M16098 Junior® Head



M17598 Center Punch Head

SET9000™ Calibration device available – Contact BAND-IT for more information.

ULTRA-LOK®

The Ultimate Clamping System

Ultra-Lok® Preformed Clamp

Part No.	Material*	Width		Thickness		Inside Diameter		Package Quantity	Package Weight	
		In	mm	In	mm	In	mm		Lbs	Kg
UL2799**	201 SS 1/4 Hard	1/2	12.7	0.030	0.76	1 1/2	38	100/box	9.1	4.1
UL2839**	201 SS 1/4 Hard	1/2	12.7	0.030	0.76	2	508	100/box	10.6	4.8
UL2869**	201 SS 1/4 Hard	1/2	12.7	0.030	0.76	2 3/4	69	100/box	12.7	5.8
UL2919**	201 SS 1/4 Hard	1/2	12.7	0.030	0.76	4	101	100/box	16.7	7.6
UL2279	201 SS 1/4 Hard	3/4	19.1	0.030	0.76	2	50	100/box	14.9	6.8
UL2109	201 SS 1/4 Hard	3/4	19.1	0.030	0.76	2 3/4	69	50/box	9.2	4.2
UL2119	201 SS 1/4 Hard	3/4	19.1	0.030	0.76	3	76	50/box	10.4	4.7
UL2129	201 SS 1/4 Hard	3/4	19.1	0.030	0.76	3 1/2	88	50/box	10.8	4.9
UL2139	201 SS 1/4 Hard	3/4	19.1	0.030	0.76	4	101	25/box	6.4	2.9
UL2149	201 SS 1/4 Hard	3/4	19.1	0.030	0.76	4 1/2	114	25/box	7.0	3.2
UL2159	201 SS 1/4 Hard	3/4	19.1	0.030	0.76	5	127	25/box	7.5	3.4
UL2709	201 SS 1/4 Hard	3/4	19.1	0.030	0.76	5 1/4	139	25/box	7.3	3.3
UL2169	201 SS 1/4 Hard	3/4	19.1	0.030	0.76	6	152	25/box	8.4	3.8
UL2179	201 SS 1/4 Hard	3/4	19.1	0.030	0.76	6 1/2	165	25/box	10.2	4.6
UL2189	201 SS 1/4 Hard	3/4	19.1	0.030	0.76	7	177	25/box	9.8	4.4
UL2199	201 SS 1/4 Hard	3/4	19.1	0.030	0.76	8	203	25/box	11.0	5.0
UL2289	201 SS 1/4 Hard	3/4	19.1	0.030	0.76	9	228	10/box	5.1	2.31

**1/2" bands require M09387 for UL4000 or UL9010 tools
Also available in Ultra-Lok® Band see page 10



Ultra-Lok®
Preformed Clamp

Ultra-Lok® Tools

Part No.	Description	Package Quantity	Package Weight Lbs	Package Weight Kg
UL4000	Ultra-Lok® 18-volt Rechargeable, Portable Tool	each	17.8	6.7
UL9010	Ultra-Lok® 110-volt AC, Corded Electric Tool	each	18.3	8.4
ULK249	Kit; Used to upgrade the tension body of the UL9000 and the UL9010, includes 3/4" and 1/2" shear plates	each	0.4	0.2
M09387	1/2" Shear plate for UL4000, upgraded UL9000 and UL9010 to convert from 3/4" Ultra-Lok® to 1/2" Ultra-Lok® Clamp Systems	each	0.1	0.1

UL9010 Ultra-Lok® Electric Tool

- Ultra-Lok® clamps 1/2"† & 3/4" either preformed or Band and Buckle can be applied.
- Locks under full tension.
- Adjustable speed and torque.
- Consistent, repeatable tensioning.
- Ideal for hose clamping.



Ultra-Lok® UL9010
Electric Tool

UL4000 Rechargeable or cordless Ultra-Lok® Tool

- Ultra-Lok® clamps 1/2"† & 3/4" either preformed or Band and Buckle can be applied.
- Designed for portable requirements.
- Consistent repeatable tensioning.
- Locks under full tension.
- Ultra-Lok® clamps can be applied four times faster than conventional clamps.
- Supplied with spare battery and charger with Automatic Tune-Up feature.



Ultra-Lok® UL4000
Rechargeable
Electric Tool

† For 1/2" Applications, must use M09387 1/2" Shear Plate.

*BAND-IT reserves the right to substitute material with equal or better corrosion resistance and/or mechanical specifications.



BAND-IT Jr.® Smooth ID

201 SS* Part No.	316 SS* Part No.	GCS* Part No.	Width In mm	Thickness In mm	Inside Diameter In mm	Package Quantity	Package Weight Lbs Kg	Application Tools	
JS2409	NA	NA	1/4 6.4	0.020 0.51	13/16 20	100/box	2.0 0.9	C00169** J00169** J05069** C00269 IT2000 S35099 S75099	
JS2429	NA	NA	1/4 6.4	0.020 0.51	1 25	100/box	2.1 1.0		
JS2419	NA	NA	1/4 6.4	0.020 0.51	1-3/8 34	100/box	2.5 1.1		
JS2529	NA	NA	1/4 6.4	0.020 0.51	1-1/2 38	100/box	2.6 1.2		
JS2539	NA	NA	1/4 6.4	0.020 0.51	2 50	100/box	3.2 1.5		
JS2209	NA	NA	1/4 6.4	0.020 0.51	2-1/2 63	100/box	3.7 1.7		
JS2569	NA	NA	1/4 6.4	0.020 0.51	2-3/4 69	100/box	3.8 1.7		
JS2449	NA	NA	1/4 6.4	0.020 0.51	3 76	100/box	4.2 1.9		
JS2579	NA	NA	1/4 6.4	0.020 0.51	3-1/2 88	100/box	4.6 2.1		
JS2589	NA	NA	1/4 6.4	0.020 0.51	4 101	100/box	5.3 2.4		
JS2599	NA	NA	1/4 6.4	0.020 0.51	4-1/2 114	100/box	5.7 2.6		
JS2019	JS4019	JS3019	3/8 9.6	0.025 0.64	13/16 20	100/box	3.6 1.6		C00169** J00169** J05069** C00269 IT5000 S35099 S75099 SET9000™
JS2439	NA	JS3439	3/8 9.6	0.025 0.64	1 25	100/box	3.9 1.8		
JS2029	JS4029	JS3029	3/8 9.6	0.025 0.64	1-3/8 34	100/box	5.0 2.3		
JS2459	JS4459	JS3459	3/8 9.6	0.025 0.64	2 50	100/box	5.9 2.7		
JS2219	JS4219	JS3219	3/8 9.6	0.025 0.64	2-1/2 63	100/box	6.8 3.1		
JS2469	NA	JS3469	3/8 9.6	0.025 0.64	3 76	100/box	7.5 3.4		
JS2559	JS4559	JS3559	3/8 9.6	0.025 0.64	3-1/2 88	100/box	8.6 3.9		
JS2489	JS4489	JS3489	3/8 9.6	0.025 0.64	4 101	100/box	9.5 4.3		
JS2039	JS4039	JS3039	1/2 12.7	0.030 0.76	1 25	100/box	6.5 3.0	C00169** J00169** J05069** C00269 IT5000 S35099 S75099 SET9000™	
JS2049	JS4049	JS3049	1/2 12.7	0.030 0.76	1-1/4 31	100/box	7.2 3.3		
JS2319	NA	JS3319	1/2 12.7	0.030 0.76	1-1/2 38	100/box	8.1 3.7		
JS2369	NA	JS3369	1/2 12.7	0.030 0.76	1-3/4 44	100/box	8.7 4.0		
JS2379	JS4379	JS3379	1/2 12.7	0.030 0.76	2 50	100/box	9.4 4.3		
JS2339	JS4339	JS3339	1/2 12.7	0.030 0.76	2-1/2 63	100/box	10.8 4.9		
JS2309	NA	JS3309	1/2 12.7	0.030 0.76	2-3/4 69	100/box	11.3 5.1		
JS2349	JS4349	JS3349	1/2 12.7	0.030 0.76	3 76	100/box	12.2 5.5		
JS2479	JS4479	JS3479	1/2 12.7	0.030 0.76	3-1/2 88	100/box	13.6 6.2		
JS2499	JS4499	JS3499	1/2 12.7	0.030 0.76	4 101	100/box	14.9 6.8		
JS2059	JS4059	JS3059	5/8 15.9	0.030 0.76	1-1/2 38	100/box	10.4 4.7	C00169** J00169** J05069** C00269 S35099 S75099 SET9000™	
JS2069	JS4069	JS3069	5/8 15.9	0.030 0.76	1-3/4 44	100/box	11.3 5.1		
JS2079	JS4079	JS3079	5/8 15.9	0.030 0.76	2 50	100/box	12.2 5.5		
JS2089	JS4089	JS3089	5/8 15.9	0.030 0.76	2-1/4 57	100/box	13.3 6.0		
JS2099	JS4099	JS3099	5/8 15.9	0.030 0.76	2-1/2 63	100/box	13.9 6.3		
JS2279	JS4279	JS3279	3/4 19.1	0.030 0.76	2 50	100/box	14.9 6.8		
JS2109	JS4109	JS3109	3/4 19.1	0.030 0.76	2-3/4 69	50/box	9.2 4.2		
JS2119	JS4119	JS3119	3/4 19.1	0.030 0.76	3 76	50/box	9.7 4.4		
JS2129	JS4129	JS3129	3/4 19.1	0.030 0.76	3-1/2 88	50/box	10.8 4.9		
JS2139	JS4139	JS3139	3/4 19.1	0.030 0.76	4 101	25/box	6.1 2.8		
JS2149	JS4149	JS3149	3/4 19.1	0.030 0.76	4-1/2 114	25/box	6.7 3.0		
JS2159	JS4159	JS3159	3/4 19.1	0.030 0.76	5 127	25/box	7.2 3.3		
JS2709	JS4709	JS3709	3/4 19.1	0.030 0.76	5-1/4 133	25/box	7.3 3.3		
JS2169	JS4169	JS3169	3/4 19.1	0.030 0.76	6 152	25/box	8.2 3.7		
JS2179	NA	JS3179	3/4 19.1	0.030 0.76	6-1/4 165	25/box	9.2 4.2		
JS2189	NA	JS3189	3/4 19.1	0.030 0.76	7 177	25/box	10.2 4.6		
JS2199	NA	JS3199	3/4 19.1	0.030 0.76	8 203	25/box	11.0 5.0		

**Junior® Adaptors, either J00169 or J05069, must be used with C00169.

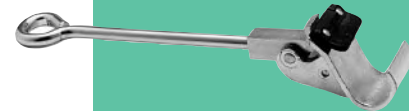
*BAND-IT reserves the right to substitute material with equal or better corrosion resistance and/or mechanical specifications.



C00169 BAND-IT® Tool



J05069 Junior® Heavy Duty Adaptor

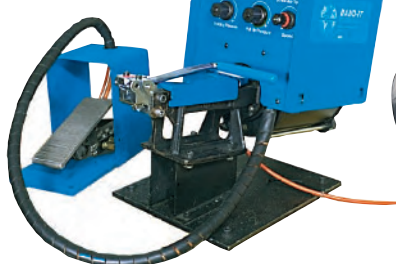


J00169 Junior® Adaptor



C00269 Junior® Hand Tool

S75099 Standard Air Tool



S35099 Automatic Air Tool

Junior® Non-Smooth ID Clamps are available, however BAND-IT recommends using the BAND-IT Jr.® Smooth ID Clamp in place of the Junior® Non-Smooth

BAND-IT Jr.® Smooth ID Bulk Packaging Options

201 SS* Part No.	GCS* Part No.	Width		Thickness		Inside Diameter		Package Quantity	Package Weight		Application Tools
		In	mm	In	mm	In	mm		Lbs	Kg	
QS2019	QS3019	3/8	9.6	0.025	0.64	13/16	20	500/box	18.1	8.3	C00169** J00169** J05069** C00269 C00369** IT5000*** S35099 S75099 SET9000™
QS2029	QS3029	3/8	9.6	0.025	0.64	1-3/8	34	500/box	25.1	11.4	
QS2039	QS3039	1/2	12.7	0.030	0.76	1	25	500/box	32.8	14.9	
QS2049	QS3049	1/2	12.7	0.030	0.76	1-1/4	31	500/box	36.2	16.5	
QS2059	QS3059	5/8	15.9	0.030	0.76	1-1/2	38	500/box	53.9	24.5	
QS2069	QS3069	5/8	15.9	0.030	0.76	1-3/4	44	500/box	58.3	26.5	
QS2079	QS3079	5/8	15.9	0.030	0.76	2	50	500/box	62.5	28.4	
QS2089	QS3089	5/8	15.9	0.030	0.76	2-1/4	57	500/box	66.9	30.4	
QS2099	QS3099	5/8	15.9	0.030	0.76	2-1/2	63	250/box	35.6	16.2	
QS2109	QS3109	3/4	19.1	0.030	0.76	2-3/4	69	250/box	43.2	19.6	
QS2119	QS3119	3/4	19.1	0.030	0.76	3	76	250/box	48.5	22.0	
QS2129	QS3129	3/4	19.1	0.030	0.76	3-1/2	88	250/box	54.3	24.7	
QS2139	QS3139	3/4	19.1	0.030	0.76	4	101	125/box	30.7	14.0	
QS2149	QS3149	3/4	19.1	0.030	0.76	4-1/2	114	125/box	33.3	15.2	
QS2159	QS3159	3/4	19.1	0.030	0.76	5	127	125/box	36.6	16.7	
QS2169	QS3169	3/4	19.1	0.030	0.76	6	152	100/box	41.8	19.0	

**Junior® Adaptors, either J00169 or J05069, must be used with C00169 and C00369.

*** For 3/8" band only.



BAND-IT Jr.® Smooth ID Preformed Clamps

Universal Clamp

Part No.	Material*	Width		Thickness		Inside Diameter		Package Quantity	Package Weight		Application Tools
		In	mm	In	mm	In	mm		Lbs	Kg	
JU2428	201 SS	1/4	6.4	0.015	0.38	1	25	100/box	1.2	0.6	A92079 A94079 IT1000 IT3000
JU2528	201 SS	1/4	6.4	0.015	0.38	1-1/2	38	100/box	1.4	0.7	
JU2538	201 SS	1/4	6.4	0.015	0.38	2	51	100/box	1.7	0.8	
JU2548	201 SS	1/4	6.4	0.015	0.38	2-1/2	64	100/box	1.9	0.9	
JU2568	201 SS	1/4	6.4	0.015	0.38	3	76	100/box	2.2	1.0	
JU2578	201 SS	1/4	6.4	0.015	0.38	3-1/2	89	100/box	2.4	1.1	
JU2588	201 SS	1/4	6.4	0.015	0.38	4	102	100/box	2.6	1.2	
JU2598	201 SS	1/4	6.4	0.015	0.38	4-1/2	114	100/box	2.7	1.3	



Universal Preformed Clamp

- The Universal Clamp is not recommended for industrial hose clamping applications.
- This is a single wrap, preformed, smooth ID clamp that can be fastened with either a Tie-Lok® or Ultra-Lok® termination.
- Can be installed with hand tool or the pneumatic powered production tools.
- Available in bulk packaging.



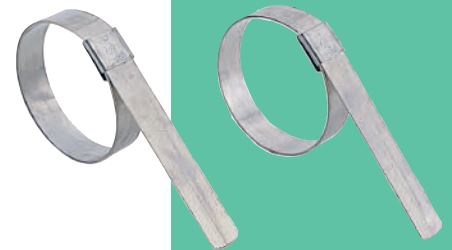
IT Series Tool

*BAND-IT reserves the right to substitute material with equal or better corrosion resistance and/or mechanical specifications.

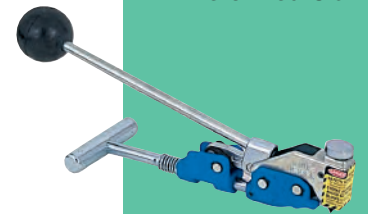


Center Punch

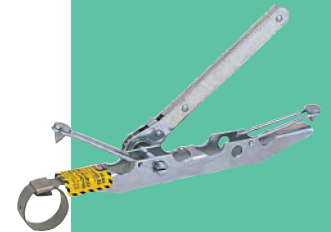
201 SS* Part No.	GCS* Part No.	Width		Thickness		Inside Diameter		Package Quantity		Package Weight		Application Tools
		In	mm	In	mm	In	mm	In	mm	Lbs	Kg	
CP3S99	CP0399	3/8	9.6	0.025	0.64	13/16	20	100/box	3.6	1.6	S03869 T30069	
CP311S	CP3119	3/8	9.6	0.025	0.64	1-3/8	35	100/box	4.6	2.1		
CP4S99	CP0499	5/8	15.9	0.025	0.64	1	25	100/box	8.3	3.8	S03869 T30069 SM1700 SET9000™	
CP5S99	CP0599	5/8	15.9	0.025	0.64	1-1/4	32	100/box	8.7	4.0		
CP6S99	CP0699	5/8	15.9	0.025	0.64	1-1/2	38	100/box	9.7	4.4		
CP7S99	CP0799	5/8	15.9	0.025	0.64	1-3/4	44	100/box	10.6	4.8		
CP8S99	CP0899	5/8	15.9	0.025	0.64	2	51	100/box	11.5	5.2		
CP9S99	CP0999	5/8	15.9	0.025	0.64	2-1/4	57	100/box	12.6	5.7		
CP10S9	CP1099	5/8	15.9	0.025	0.64	2-1/2	64	50/box	6.8	3.1		
CP11S9	CP1199	5/8	15.9	0.025	0.64	2-3/4	70	50/box	7.3	3.3		
CP12S9	CP1299	5/8	15.9	0.025	0.64	3	76	50/box	7.7	3.5		
CP14S9	CP1499	5/8	15.9	0.025	0.64	3-1/2	89	50/box	8.7	4.0		
CP16S9	CP1699	5/8	15.9	0.025	0.64	4	102	25/box	4.9	2.2	S03869 T30069	
CP18S9	CP1899	5/8	15.9	0.025	0.64	4-1/2	114	25/box	5.5	2.5		
CP20S9	CP2099	5/8	15.9	0.025	0.64	5	127	25/box	5.9	2.7	S03869 T30069	
CP24S9	CP2499	5/8	15.9	0.025	0.64	6	152	25/box	6.8	3.1		
CP26S9	CP2699	5/8	15.9	0.025	0.64	6-1/2	165	25/box	7.1	3.3		
CP28S9	CP2899	5/8	15.9	0.025	0.64	7	178	25/box	7.4	3.4		
CP32S9	CP3299	5/8	15.9	0.025	0.64	8	203	25/box	8.2	3.7		



Center Punch
Preformed Clamps



T30069 Center Punch
Tool



S03869 Center Punch
Tool



SM1700 Production Tool



Center Punch Clamp Kit CP3999

- For general plant maintenance or emergency field repairs.
- Clamping range from 3/4" to 1" diameter.
- Kit includes: 4 CP3S99 Center Punch Clamps. 8 each - CP311S and CP6S99 Center Punch Clamps. 6 - CP5S99 Center Punch Clamps. 9 - CP8S99 Center Punch Clamps. 3 each - O316S9, O10S99, BAND-FAST™ Open End with Center Punch Clips. 1 - S03869 Center Punch Tool. Polyethylene carrying case.

BAND-FAST™ Open End with Center Punch Clip

Part No.	Material*	Width		Thickness		Length**		Inside Diameter		Package Quantity	Package Weight		Application Tools		
		In	mm	In	mm	In	mm	Single Wrap	Double Wrap		In	mm		Lbs	Kg
O311S9	SS	3/8	9.6	0.020	0.51	15.0	381	2-3/4	70	1-3/8	35	100/box	5.2	2.4	S03869 SM1700 T30069
O316S9	SS	3/8	9.6	0.020	0.51	18.0	457	4	101	2	50	100/box	5.9	2.7	
O325S9	SS	3/8	9.6	0.020	0.51	24.0	610	6	152	3	76	100/box	6.4	2.9	
O10S99	SS	5/8	15.9	0.020	0.51	23.0	584	5	127	2-1/2	64	50/box	5.2	2.3	
O16S99	SS	5/8	15.9	0.020	0.51	31.0	787	8	203	4	102	50/box	9.5	4.3	
O20S99	SS	5/8	15.9	0.020	0.51	37.0	940	10	254	5	127	25/box	5.8	2.6	
O32S99	SS	5/8	15.9	0.020	0.51	56.0	1422	16	406	8	203	25/box	6.6	3.0	

**Take the object circumference and add 4" to grip with the tool. (2 X circumference for double wrap.)

- BAND-FAST™ Open End with Center Punch Clips are used for repair when a preformed clamp won't fit over the object being repaired.
- Also suitable where larger diameter single wrap clamps are required.

*BAND-IT reserves the right to substitute material with equal or better corrosion resistance and/or mechanical specifications.



BAND-FAST™
Open End with
Center Punch Clip

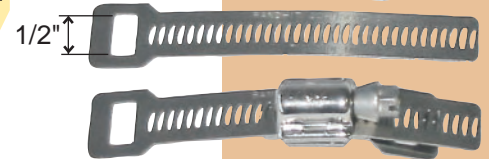
Adjustable Clamping Systems

Worm Gear Clamp

Part No.	Material*	Width		Inside Diameter Range				Package Quantity	Package Weight		Application Tools
		In	mm	Min	Max	Min	Max		Lbs	Kg	
V20299	301 SS	5/16	7.9	1/4	5/8	6	16	10/box	0.2	0.1	Hex or Screw Driver
V20399	301 SS	5/16	7.9	3/8	7/8	8	23	10/box	0.2	0.1	
V00699	301 SS	9/16	14.3	3/8	7/8	9	22	10/box	0.5	0.2	
V00899	301 SS	9/16	14.3	1/2	1	11	25	10/box	0.5	0.2	
V01099	301 SS	9/16	14.3	1/2	1-1/8	12	28	10/box	0.6	0.3	
V01299	301 SS	9/16	14.3	1/2	1-1/4	12	32	10/box	0.6	0.3	
V01699	301 SS	9/16	14.3	3/4	1-1/2	19	38	10/box	0.6	0.3	
V02099	301 SS	9/16	14.3	7/8	1-3/4	22	45	10/box	0.6	0.3	
V02499	301 SS	9/16	14.3	1-1/8	2	28	51	10/box	0.7	0.3	
V02899	301 SS	9/16	14.3	1-3/8	2-1/4	35	57	10/box	0.7	0.3	
V03299	301 SS	9/16	14.3	1-5/8	2-1/2	41	64	10/box	0.8	0.3	
V03699	301 SS	9/16	14.3	1-7/8	2-3/4	48	70	10/box	0.8	0.4	
V04099	301 SS	9/16	14.3	2-1/8	3	54	76	10/box	0.8	0.4	
V04499	301 SS	9/16	14.3	2-3/8	3-1/4	58	83	10/box	0.9	0.4	
V04899	301 SS	9/16	14.3	2-5/8	3-1/2	67	89	10/box	0.9	0.4	
V05299	301 SS	9/16	14.3	2-7/8	3-3/4	73	95	10/box	0.9	0.4	
V05699	301 SS	9/16	14.3	3-1/8	4	79	102	10/box	1.0	0.4	
V06499	301 SS	9/16	14.3	3-1/2	4-1/2	89	114	10/box	1.1	0.5	
V07299	301 SS	9/16	14.3	4	5	102	127	10/box	1.3	0.6	
V08099	301 SS	9/16	14.3	4-1/2	5-1/2	114	140	10/box	1.3	0.6	
V08899	301 SS	9/16	14.3	5-1/8	6	130	152	10/box	1.4	0.6	
V10499	301 SS	9/16	14.3	6-1/8	7	155	178	10/box	1.5	0.7	



Worm Gear Clamp



Scru-Seal Rack and Housing

Scru-Seal Clamping System

- A rack and pinion system used with band to create any size clamp.
- Components separately packaged rack and housing and band for flexibility.

Part No.	Material*	Description	Package Quantity	Package Weight	
				Lbs	Kg
M21199	SS	10 Scru-Seal racks and 10 Housings	10/box	0.7	0.3
C13399	SS	VALU-STRAP™ Band, SS, 3/8" x 0.015" x 100'	100'/roll	2.2	1.0
C13499	SS	VALU-STRAP™ Band, SS, 1/2" x 0.015" x 100'	100'/roll	2.9	1.3

Kits-Everything you need in a single package

M21099	SS	Scru-Seal Kit includes: 25 Scru-Seal racks, 25 housings, VALU-STRAP™ band 3/8" x 0.015" x 100'	each	4.3	1.9
M21899	SS	Each Clamp Pak includes: 3 Scru-Seal racks, 3 housings, VALU-STRAP™ band 3/8" x 0.015" x 10'	10 paks/box	5.0	2.3



M21899
Clamp-Pak
(Shipped as
10 pack)



M21099 Scru-Seal Kit
with VALU-STRAP™



Scru-Band
Clamping System

Scru-Band Clamping System

- A pinion and band with full length formed rack to create any size clamp.
- Components separately packaged rack and housing and band for flexibility.

Part No.	Material*	Description	Package Quantity	Package Weight	
				Lbs	Kg
M15099	SS	Scru-Band Housing, 301 SS-Screw 410 SS	100/box	2.8	1.3
M15599	SS	Scru-Band Housing, 301 SS-Screw 410 SS	25/box	0.7	0.3
M15199	SS	Scru-Band, 430SS 3/8" (9.5mm) x .025" (30.5M) (.64mm)	100'/roll	3.4	1.6

Kits-Everything you need in a single package

M15699	SS	Scru-Band Kit includes: 100' of Scru-Band, 25 housings, 25 slotted screws	each	4.0	1.8
M15799	SS	Scru-Band Kit includes: 50' of Scru-Band, 10 housings, 10 slotted screws	each	2.1	1.0
M15899	SS	Each Pak includes: 10' of Scru-Band, 5 housings, 5 slotted screws	10 paks/box	4.4	2.0



M15699, M15799
Scru-Band Kit



M15899
Scru-Band Pak
(Shipped as 10 pack)

Hose Fittings

Material	Tri-Lokt®		Swaged	Machined	
	316 SS	Carbon Steel - Plated	Carbon Steel - Plated	316 SS	Carbon Steel - Plated
Diameter	1/2" - 6"	1-1/4" - 6"	1-1/2" - 4"	1/4" - 1-1/2"	1/4" - 1-1/2"
Corrosion	Excellent	Good	Good	Excellent	Good

Recommended Clamp Widths for the BAND-IT® Nipples shown in this catalog.

Inches	Hose ID		Band Clamp Width	
	mm	Inches	mm	Inches
1/2 to 5/8	13 to 16	3/8 or 1/2	6.35 or 12.70	
3/4 to 1 1/2	19 to 38	1/2 to 3/4	12.70 to 19.05	
2 to 6	51 to 152	3/4	19.05	

For maximum holding power BAND-IT recommends the Ultra-Lok® Clamping System for use with all hose fittings.

Tri-Lokt® Hose Nipples

- BAND-IT's exclusive design of the Tri-Lokt® Hose Nipple is the answer for heavy duty industrial hose applications.
- The Tri-Lokt® Nipple should be used when a positive lock is required between the clamp and the nipple.
- The locking yoke or tie strip assembly together with the BAND-IT® clamp accommodates the various wall thicknesses of different types of hoses.

Features:

- End barb provides excellent holding strength.
- Secure lock due to a unique yoke or tie strip assembly which is clamped to the hose.
- Low Profile.
- Ease of Installation.

Caution: Hose and nipples should never be operated in excess of the maximum working pressure established by the hose manufacturer.

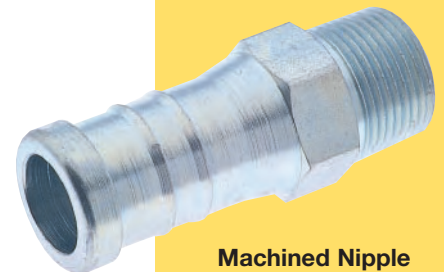
* Finish may be clear zinc or dichromate zinc plating on the carbon steel nipple.



**Tri-Lokt® Male
Hose Nipple**



**Swaged Male Hose
Nipple**



Machined Nipple

Tri-Lokt® Male Hose Nipple - NPT Swaged Including Tie Strip**

Part No.	Material*	NPT Inches	Shank Length		Hose Inside Diameter		No. of Clamps Per Nipple	Package Quantity	Package Weight	
			Inches	mm	Inches	mm			Lbs	Kg
H60088	Plated Steel	1-1/4	2.75	69	1-1/4	32	4	each	1.3	0.6
H61088	Plated Steel	1-1/2	2.75	69	1-1/2	38	4	each	1.5	0.7
H62088	Plated Steel	2	2.75	69	2	51	4	each	2.3	1.0
H63088	Plated Steel	2-1/2	4.50	114	2-1/2	64	6	each	3.5	1.6
H64088	Plated Steel	3	4.50	114	3	76	6	each	4.6	2.1
H65088	Plated Steel	4	4.50	114	4	102	6	each	6.4	2.9
H65688	Plated Steel	5	6.50	165	5	127	8	each	11.5	5.2
H65888	Plated Steel	6	8.00	203	6	152	10	each	15.9	7.2

Tri-Lokt® Male Hose Nipple - NPT Swaged Including Tie Strip**

Part No.	Material*	NPT Inches	Shank Length		Hose Inside Diameter		No. of Clamps Per Nipple	Package Quantity	Package Weight	
			Inches	mm	Inches	mm			Lbs	Kg
S60088	316 SS	1-1/4	2.75	69	1-1/4	31	4	each	0.9	0.4
S61088	316 SS	1-1/2	2.75	69	1-1/2	38	4	each	1.2	0.5
S62088	316 SS	2	2.75	69	2	50	4	each	1.5	0.7
S64088	316 SS	3	4.63	117	3	76	6	each	5.4	2.4
S65088	316 SS	4	4.63	117	4	101	6	each	6.5	2.9

Tri-Lokt® Machined Male Hose Nipple - NPT Including Yoke**

Part No.	Material*	NPT Inches	Shank Length		Hose Inside Diameter		No. of Clamps Per Nipple	Package Quantity	Package Weight	
			Inches	mm	Inches	mm			Lbs	Kg
S13479	316 SS	3/4	1.50	38	3/4	19	2	each	0.4	0.2
S14079	316 SS	1	1.50	38	1	25	2	each	0.6	0.3

Tri-Lokt® Machined Male Hose Nipple - NPT Including Yoke**

Part No.	Material*	NPT Inches	Shank Length		Hose Inside Diameter		No. of Clamps Per Nipple	Package Quantity	Package Weight	
			Inches	mm	Inches	mm			Lbs	Kg
H12289	Plated Steel	1/2	1.25	31	1/2	12	2	12/box	3.1	1.4
H13489	Plated Steel	3/4	1.50	38	3/4	19	2	12/box	4.9	2.2
H14089	Plated Steel	1	1.50	38	1	25	2	12/box	7.6	3.4

Tri-Lokt® Machined Female Hose Swivel Coupling-NPSC Including Yoke **

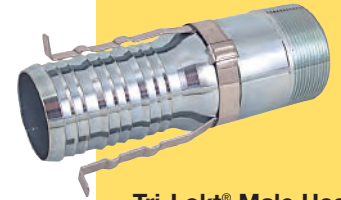
Part No.	Material*	Shank Length		ID/NPSC		No. of Clamps Per Coupling	Package Quantity	Package Weight	
		Inches	mm	Inches	mm			Lbs	Kg
H22279	Plated Steel	1.19	30	1/2	12	2	12/box	3.2	1.4
H23479	Plated Steel	1.50	38	3/4	19	2	12/box	5.6	2.5

Nut end has conical seat to seal with a Tri-Lokt® Male Nipple of comparable size.

Tri-Lokt® Full Flow Hose Nipple Including Tie Strip**

Part No.	Material*	Hose ID		End	No. Clamps per Fitting Double Wrapped	Package Quantity	Package Weight	
		Inches	mm				Lbs	Kg
H75089	Plated Steel	1-1/2	38	NPT	4 - Ear-Lokt	each	1.2	0.5
H75589	Plated Steel	2	50	Grooved	4 - Ear-Lokt	each	1.2	0.5

- Only Stainless Steel BAND-IT® clamps should be used with Tri-Lokt® Hose Nipples.
- *BAND-IT reserves the right to substitute material with equal or better corrosion resistance and/or mechanical specifications.
- **Replacement Tri-Lokt® Stainless Steel Tie Strip kits and Yokes available. Contact BAND-IT for information.
- Finish may be clear zinc or dichromate zinc plating on the carbon steel nipple.



Tri-Lokt® Male Hose Nipple



Tri-Lokt® Machined Male Hose Nipple



Tri-Lokt® Machined Female Hose Swivel Coupling



Tri-Lokt® Full Flow Hose Nipple

Swaged Male Hose Nipple - NPT

Part No.	Material*	NPT		Shank Length		Hose Inside Diameter		No. of Clamps Per Nipple	Package Quantity	Package Weight	
		Inches		Inches	mm	Inches	mm			Lbs	Kg
E79899	Plated Steel	1/2		1.56	39	1/2	12	1	each	0.2	0.1
E80099	Plated Steel	3/4		1.56	39	3/4	19	1	each	0.2	0.1
E80299	Plated Steel	1		1.63	41	1	25	1	each	0.4	0.2
E80499	Plated Steel	1-1/4		1.63	41	1-1/4	31	1	each	0.4	0.2
E80699	Plated Steel	1-1/2		1.63	41	1-1/2	38	1	each	0.4	0.2
E80899	Plated Steel	2		2.75	69	2	50	2	each	0.6	0.5
E81299	Plated Steel	2 1/2		3.00	76	2-1/2	63	2	each	1.9	0.9
E81499	Plated Steel	3		3.00	76	3	76	2	each	2.7	1.2
E81699	Plated Steel	4		4.63	117	4	101	3	each	5.2	2.4



Swaged Male Hose Nipple

Machined Male Hose Nipple - NPT

Part No.	Material*	NPT		Shank Length		Hose Inside Diameter		Diameter of Hole		No. of Clamps Per Nipple	Package Quantity	Package Weight	
		Inches		Inches	mm	Inches	mm	Inches	mm			Lbs	Kg
E60699	316 SS	1/4		1.03	26	1/4	6	0.180	4	1	each	0.1	0.1
E61299	316 SS	3/8		1.07	27	3/8	9	0.230	5	1	each	0.1	0.1
E62299	316 SS	1/2		1.35	34	1/2	12	0.370	9	1	each	0.2	0.1
E63499	316 SS	3/4		1.38	35	3/4	19	0.620	15	1	each	0.2	0.1
E64099	316 SS	1		1.78	45	1	25	0.870	22	1	each	0.4	0.2

Machined Male Hose Nipple- NPT

Part No.	Material*	NPT		Shank Length		Hose Inside Diameter		Diameter of Hole		No. of Clamps Per Nipple	Package Quantity	Package Weight	
		Inches		Inches	mm	Inches	mm	Inches	mm			Lbs	Kg
E00499	Plated Steel	1/8		0.87	22	1/4	6	0.188	4	1	12/box	0.4	0.2
E00699	Plated Steel	1/4		1.03	26	1/4	6	0.188	4	1	12/box	0.8	0.3
E00899	Plated Steel	1/8		1.07	27	3/8	9	0.234	5	1	12/box	0.6	0.3
E01099	Plated Steel	1/4		1.07	27	3/8	9	0.234	5	1	12/box	0.7	0.3
E01299	Plated Steel	3/8		1.07	27	3/8	9	0.234	5	1	12/box	1.2	0.5
E01499	Plated Steel	1/2		1.07	27	3/8	9	0.234	5	1	12/box	2.1	1.0
E01899	Plated Steel	1/4		1.35	34	1/2	12	0.266	6	1	12/box	1.4	0.6
E02099	Plated Steel	3/8		1.35	34	1/2	12	0.359	9	1	12/box	1.3	0.6
E02299	Plated Steel	1/2		1.35	34	1/2	12	0.375	9	1	12/box	2.1	0.9
E02899	Plated Steel	1/2		1.36	34	5/8	15	0.500	12	1	12/box	2.0	0.9
E03099	Plated Steel	3/4		1.36	34	5/8	15	0.500	12	1	12/box	2.6	1.2
E03299	Plated Steel	1/2		1.38	35	3/4	19	0.500	12	1	12/box	3.0	1.4
E03499	Plated Steel	3/4		1.38	35	3/4	19	0.625	15	1	12/box	2.8	1.3
E03699	Plated Steel	1		1.38	35	3/4	19	0.625	15	1	12/box	4.1	1.9
E03899	Plated Steel	3/4		1.78	45	1	25	0.750	17	1	12/box	4.0	1.8
E04099	Plated Steel	1		1.78	45	1	25	0.875	22	1	12/box	4.6	2.1
E04299	Plated Steel	1		1.78	45	1-1/4	31	0.922	23	1	12/box	7.3	3.3
E04499	Plated Steel	1-1/4		1.78	45	1-1/4	31	1.109	28	1	12/box	8.2	3.7
E04699†	Plated Steel	1-1/2		1.90	48	1-1/2	38	1.344	34	1	12/box	11.6	5.3

†Round Profile, not Hex.

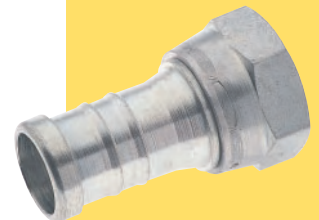


Machined Male Hose Nipple in 316SS or Plated Steel

Machined Female Swivel Hose Nipple - NPSC

Part No.	Material*	Shank Length		Hose ID/NPSC		No. of Clamps Per Nipple	Package Quantity	Package Weight	
		Inches	mm	Inches	mm			Lbs	Kg
E10699	Plated Steel	1.06	27	1/4	6	1	12/box	0.7	0.3
E12299	Plated Steel	1.37	34	1/2	12	1	12/box	1.7	0.8
E13499	Plated Steel	1.37	34	3/4	12	1	12/box	3	1.6

Nut end has conical seat to seal with BAND-IT® Male Hose Nipple.



Machined Female Swivel Hose Nipple

Machined Hose Mender

Part No.	Material*	Shank Length		Hose ID/NPSC		No. of Clamps Per Mender	Package Quantity	Package Weight	
		Inches	mm	Inches	mm			Lbs	Kg
F10689	Plated Steel	.91	23	1/4	6	2	each	.03	.01
F10889	Plated Steel	.95	24	3/8	9	2	each	.04	.02
F11089	Plated Steel	1.16	29	1/2	12	2	each	.06	.03
F11289	Plated Steel	1.18	29	5/8	15	2	each	.10	.05
F11489	Plated Steel	1.20	30	3/4	19	2	each	.30	.10
F11689	Plated Steel	1.53	38	1	25	2	each	.20	.09
F11889	Plated Steel	1.53	38	1 1/4	31	2	each	.30	.10

Suitable for use on hose reels due to short length of these mendings.



Machined Hose Mender

Hand Tools

Common BAND-IT® Brand Tools and Tool Repair/Replacement Parts List



C00169 - Standard Banding Tool

Replacement Parts:

- C00689 – Tension handle and tension screw kit
- C01899 – Band Gripper
- C01687 – Thrust bearing
- C05887 – Cutterbar and handle assembly



C00369 – Heavy Duty Banding Tool

Replacement Parts:

- C01899 – Band Gripper
- C07087 – Thrust bearing
- C05887 – Cutterbar and handle assembly
- C04986 – 5/8" Tension handle for tool



G40269 – Giant Banding Tool

Replacement Parts:

- G40888 – Thrust bearing
- G42287 – Cutterbar and handle assembly



T30069 – Center Punch Tool - 5/8"

Replacement Parts:

- T32190 – Punch and holder replacement kit
- T32290 – Clamp tail grippers replacement kit
- S03289 – Adaptor insert for 3/8" clamp installations



C00269 – Junior® Preformed Clamp Tool - complete

Replacement Parts:

- C00689 – Tension handle and tension screw kit
- C01899 – Band Gripper
- C01687 – Thrust bearing
- J00587 – Shear hook
- J93099 – Junior® lock universal cutter blade kit



J00169 – Junior® Clamp Adaptor for use with C00169 Tool

Replacement Parts:

- J00587 – Shear hook
- J93099 – Junior® lock universal cutter blade kit



J05069 – Junior® Heavy Duty Adaptor for use with C00169 Tool

Replacement Parts:

- J00587 – Shear hook
- J93099 – Junior® lock universal cutter blade kit

For a complete list of available tool instructions and replacement parts, go to www.BAND-IT-IDEX.com/products/products_tools.html



Power Tools

Common BAND-IT® Brand Tools and Tool Repair/Replacement Parts List



S75099 – Pneumatic Junior® Clamp Application Tool

Replacement Parts:

- S45799 – Band Gripper Kit
- J93099 – Junior® lock universal cutter blade kit
- J00587 – Shear hook
- S45087 – Tripper Plate



S35099 - Pneumatic Automatic Junior® Clamp Application Tool

Replacement Parts:

- S45799 – Band Gripper Kit
- J93099 – Junior® lock universal cutter blade kit
- S45087 – Tripper Plate



SM1700 - Pneumatic Automatic Center Punch Clamp Application Tool

Replacement Parts:

- S45199 – CP Band Gripper Kit
- M17799 – CP Cutter Blade Kit
- S45087 – Tripper Plate



UL4000 – Ultra-Lok® Portable Tool

Replacement Parts:

- M21790 – Adapter Clutch
- M09387 – Shear plate for installing 1/2" wide UL clamps
- M09887 – Shear plate for installing 3/4" wide UL clamps
- M09787 – Cutter Blade for installing all UL clamps
- C23187 – Lubricant for tension threads
- UL1219 – Handle Kit



UL9010 – Ultra-Lok® AC Powered Tool

Replacement Parts:

- M03990 – Adapter Clutch
- M09387 – Shear plate for installing 1/2" wide UL clamps
- M09887 – Shear plate for installing 3/4" wide UL clamps
- M09787 – Cutter Blade for installing all UL clamps
- C23187 – Lubricant for tension threads
- UL1219 – Handle Kit

UL9000 – Ultra-Lok® AC Powered Tool (1st Generation)

Replacement Parts:

- M03990 – Adapter Clutch
- ULK249 – Upgrade kit to convert UL9000 to UL9010 features
- C23187 – Lubricant for tension threads

Patents

Many BAND-IT products shown herein are manufactured under one or more of the following U.S. and corresponding foreign patents owned by BAND-IT- IDEX, Inc., a unit of IDEX Corporation.

Other patents pending.

4,887,334	4,896,402	4,928,738	5,123,456	5,127,446	5,129,350	5,303,571
5,322,091	5,452,523	5,483,998	5,488,760	5,566,726	5,743,310	5,850,674
6,014,792	6,260,704	6,481,467	1,140,648			

Trademarks

BAND-IT®, BAND-IT Jr.®, Junior®, *BAND-FAST*™, COLOR-IT™, Tri-Lokt®, Thriftool®, Tie-Lok®, TORQ-LOKT™, Tie-Lok Tool®, Tie-Dex®, Band-Lok®, Self-Lok®, and Ultra-Lok® are registered trademarks owned by BAND-IT- IDEX, Inc., a unit of IDEX Corporation. SET9000™ and VALU-STRAP™ trademarks have been applied for. BAND-IT Trademarks are registered in the U.S. Patent and Trademark Office and in many other countries. For permission to use any BAND-IT logo or image, please contact us at: info.band-it@idexcorp.com

Acknowledgement of Registered Trademarks

- Q-BAND™ is a registered trademark of Great Lakes Textile, Inc.
- Q-Clip™ is a registered trademark of KOTEC'S Co., LTD. Corporation Higashi-Nippori, Arakawa-ku Tokyo in Japan.
- Monel® 400 and Inconel® 625 are registered trademarks of Inco Alloys International, Inc.
- AL6XN® is a registered trademark of ATI Properties.

Uniform Industrial Code

BAND-IT's UIC (Uniform Industrial Code) number is 662682.

Commercial and Government Entity Code

BAND-IT's Commercial and Government Entity Code (CAGE code) number is 70847.

Approvals



Tie products listed with the CE mark are suitable for electric purposes and meet the requirements of (LVD) 73/23/EEC.



Underwriters Laboratories Listing BAND-IT-IDEX has UL Listings on the products indicated.



Det Norske Veritas Type Approval BAND-IT Company Ltd, Derbyshire, has Det Norske Veritas Type Approval on the products indicated in the catalog certificate Number E-4464.



The CSA C/US mark signifies that the product meets applicable U.S. and Canadian standards, including those from CSA, CSA America, ANSI, ASME, ASSE, ASTM, NSF and UL.

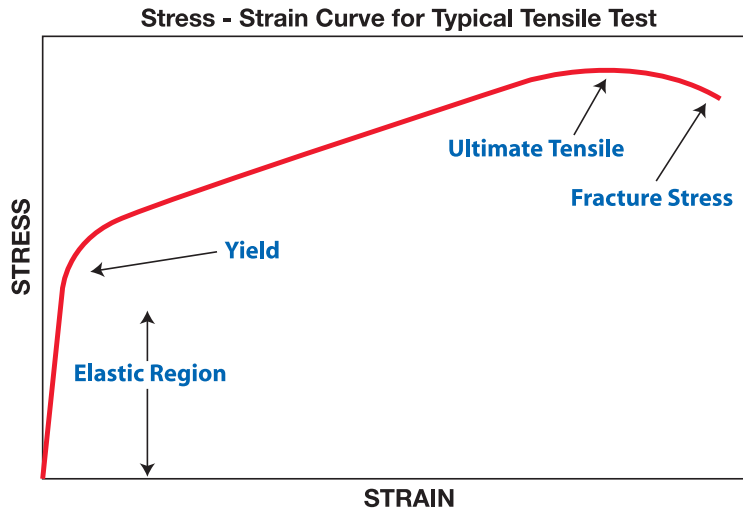
RoHS Compliance

All bands, clamps, ties and buckles that are manufactured at BAND-IT-IDEX, Inc. are fully compliant within the EU RoHS Directive, 2002/95/EC. These products are created using stainless or carbon steel material with no hazardous substances in the manufacturing. Specifically, Hexavalent Chromium, Lead, Mercury, Cadmium, PBB, or PBDE are not introduced in the manufacturing of, or present in, the raw material of our products. This includes the following families:

- Ball-Lok Ties and Buckles
- *BAND-FAST*™ Clamps
- Band-Lok® Ties
- BAND-IT® Band
- Center Punch Clamps and Buckles
- Ear-Lokt Buckles
- ID Tags
- Junior® Clamps and Buckles
- Jr.® SID Clamps and Buckles
- Open End Clamps and Buckles
- Powder Coated Ties and Buckles
- Q-Band™ and Q-Clips™
- Scru-Lokt Bands and Buckles
- Scru-Seal Clamping System
- Self-Lok® Ties
- Tie-Lok® Ties
- Tie-Dex® Bands and Buckles
- Ultra-Lok® Band and Buckles
- Ultra-Lok® Preformed Clamps
- Ultra-Lok® Ties and Buckles
- Universal Preformed Buckles and Clamps
- Valuband
- Valuclips
- VALU-STRAP™

*BAND-IT reserves the right to substitute material equal to or better than the material specifications of individual part numbers listed within this catalog. Tolerance is +.0005" / -.0025" for steel of thickness .030" and thinner and +.001 / -.003 for steel of thickness up to .044" unless otherwise specified by BAND-IT Engineering.





Definitions

For additional Technical information visit: www.BAND-IT-IDEX.com

Breaking Strength/Tensile Strength - The strength of a material when subjected to a stretching (tensile) force usually measured by placing a standard test piece in the jaws of a tensile machine, gradually separating the jaws, and measuring the force necessary to break the test piece. (This strength is expressed as pounds per square inch or PSI.)

Clamping Force - (Also, Retained Force) The amount of force applied to an object by an installed clamp or tie. The clamping force maintains the assembly integrity and hardware placement.

Cold Flow Properties of Flexible Hose Materials - The continued deformation or movement of hose wall material as a result of clamp tension.

Corrosion Resistance - The ability of a material to withstand degradation in specific environments.

Decorative Coating - A coating for matching pre-existing hardware or decorative traffic poles. These coatings are often an applied and baked, powder polyester finish.

Elongation - The amount of stretch that occurs prior to the band/clamp material breaking. This is typically expressed as a percentage of original length and is a measure of the ductility of the metal.

Loop Tensile Strength - The max amount of force, applied radially, an installed clamp/tie will withstand prior to failure.

Nylon 11 - Non-toxic polymer cable tie coating resistant to stress cracking, abrasion, impact, salt spray and typical airborne pollutants. When subjected to fire, this coating is halogen-free and produces low amounts of smoke.

Powder Polyester - A coating available in colors applied to products and baked on for a durable finish. Polyester coatings are resistant to fading, stress cracking, abrasion, impact, salt spray and typical airborne pollutants.

PPA - (Performance Polymer Alloy) Non-toxic polymer coating for rolled band resistant to stress cracking, abrasion, impact, salt spray and typical airborne pollutants. When subject to fire, this coating is halogen free and produces low amounts of smoke.

Production Tool - Power tools to install band clamps and tie products consistently.

Ultimate Strength - The maximum tensile or clamping force that a band clamp or tie will withstand prior to breaking.

Yield Strength - The point at which the material begins to stretch as a result of stress being applied. Loading beyond this point will result in deformation.

Abbreviations

cm- Centimeter

GCS - Galvanized Carbon Steel

ID - Inside Diameter

Kg - Kilogram

Lb - Pound

M - Meter

mm- Millimeter

NPSC - National Pipe Straight Coupling

NPSM - American Standard Straight

Pipe Thread for Mechanical Joints

NPT - National Pipe Thread

OD - Outside Diameter

SS - Stainless Steel

UIC - Uniform Industrial Code

Metals Data

AISI TYPE NUMBER OR NAME		200/300	201	201 1/4 Hard	301	304	316	
SPECIFICATION	UNS Designation	-	S20100	S20100	S30100	S30400	S31600	
	ASTM	-	A-666	A-666	A-666	A-666	A-666	
Principal Alloying Elements, %		-	C 0.15 Max.	C 0.03 Max.	C 0.15 Max.	C 0.08 Max.	C 0.08 Max.	
		-	Mn 5.50 - 7.50	Mn 5.50 - 7.50	Mn 2.00 Max.	Mn 2.00 Max.	Mn 2.00 Max.	
		-	Si .75 Max.	Si 1.00 Max.	Si 1.00 Max.	Si 1.00 Max.	Si .75 Max.	
		-	Cr 16.00 -18.00	Cr 16.00 -18.00	Cr 16.00 -18.00	Cr 18.00 -20.00	Cr 16.00 -18.00	
		-	Ni 3.50 - 5.50	Ni 3.50 - 5.50	Ni 6.00 - 8.00	Ni 8.00 - 10.50	Ni 10.00 -14.00	
		-	N 0.25 Max	N 0.25 Max			Mo 2.00 - 3.00	
PHYSICAL PROPERTIES								
Density, Lb/Cu. In.		0.28	0.28	0.28	0.29	0.29	0.29	
Mod. of Elasticity in Tension x 10 ⁶ PSI		28.0	28.6	28.6	28.0	29.0	28.0	
Structure		Austenitic	Austenitic	Austenitic	Austenitic	Austenitic	Austenitic	
Mean Coefficient of Thermal Expansion per °F. x 10 ⁻⁶	32 - 212°F	9.0	8.7	9.0	9.4	9.4	8.9	
	32 - 600°F	9.70	9.70	10.00	9.50	9.6	9.00	
	32 - 1000°F	10.20	10.20	10.50	10.10	10.20	9.70	
	32 - 1200°F	10.40	10.50	-	10.40	10.40	10.30	
Melting Range		2550 - 2650°F	2550 - 2650°F	2550 - 2650°F	2550 - 2590°F	2550 - 2590°F	2540 - 2630°F	
ELECTRICAL PROPERTIES								
Magnetic Permeability, Annealed		Non-Magnetic	Non-Magnetic	Non-Magnetic	Non-Magnetic	Non-Magnetic	Non-Magnetic	
Elec. Resistivity, Microhm-cm, 70°F		70.00	69.00	69.00	72.00	70.00	74.00	
MECHANICAL PROPERTIES								
Rockwell Hardness		70 - 95R _B	90 - 95R _B	20 - 30R _C	75 - 95R _B	70 - 90R _B	70 - 85R _B	
Ultimate Tensile Strength, BAND-IT Min. Spec. (PSI), Typical (PSI)		75,000 80,000	100,000 115,000	120,000 135,000	100,000 105,000	75,000 80,000	80,000 90,000	
Yield Strength, BAND-IT Min. Spec. (PSI) Typical (PSI)		30,000 45,000	45,000 60,000	85,000 90,000	45,000 55,000	30,000 45,000	35,000 50,000	
% of Elongation in 2 inches, BAND-IT Min. Spec., Typical (%)		30 45	40 55	40 45	40 50	30 45	35 45	
Tensile Strength at Elevated Temps., Short Time Tests, (PSI)		1300°F 1500°F 1700°F	36,000 22,000 11,000	37,500 23,000 11,000	37,500 23,000 11,000	35,500 22,500 11,000	36,000 22,000 13,500	48,000 28,000 18,000
CORROSION RESISTANCE								
Mild Atmospheric and Fresh Water		Good	Good	Good	Good	Very Good	Excellent	
Industrial Atmosphere		Good	Good	Good	Good	Very Good	Very Good	
Marine Atmosphere		Fair	Fair	Fair	Fair	Good	Very Good	
Salt Water		No	No	No	No	No	Good	
Mild Chemical		Fair	Fair	Fair	Fair	Good	Good	
Oxidizing Chemical		Fair	Fair	Fair	Fair	Good	Good	
Reducing Chemical		No	No	No	No	No	Good	
USE	General	Municipal, Strapping, Construction	Municipal, Construction, Automotive	Construction, Automotive, Municipal	Construction, Automotive	Chemical, Food, Dairy, Hospitals, Electrical Power Transmission	Marine, Chemical, Food, Petroleum, Paper, Textile, Medical	
	BAND-IT®	VALU-STRAP™, Valucups, Brackets, BAND-IT® Tie, Band Clamps	Center Punch Clamps, Jr.® Smooth ID Clamps, Band, Buckle, BAND-FAST™, Tie Strips, Band-Lok® Tie 1/4" Ultra-Lok® Ties	Ultra-Lok® Band and Clamps	Scru-Seal Housing & Base, Worm Gear, Clamps, Buckles	304 Strap, Tie-Dex® Band, Tie-Lok® Ties, Ball-Lok Ties, Self-Lok Ties,	Multi-Lok, Tie-Lok®, Ball-Lok, Self-Lok® Ties, Junior® SID Clamps, Nipples, Tri-Lokts®, 316 Band/Buckle, All Purpose Band, Easy Read	

All values in table are reference only.



Metals Data

AISI TYPE NUMBER OR NAME	317L 1/4 Hard	409	430	Monel® 400	Inconel® 625	AL6XN®	Titanium GR1	GCS	
SPECIFICATION UNS Designation	S31703	S40900	S43000	N04400	N06625	N08367	R50250	-	
ASTM	A-240	A-240	A-240	B127	B443	B688	B265	-	
Principal Alloying Elements, %	C 0.030 Max. Mn 2.00 Max. Si .75 Max. Cr 18.00 - 20.00 Ni 11.00 - 15.00 P 0.045 Max. S 0.03 Max. Mo 3.00-4.00	C 0.08 Max. Mn 1.00 Max. Si 1.00 Max. Cr 10.50 - 11.75 Ni 0.050 P 0.045 Max. S 0.03 Max.	C 0.12 Max. Mn 1.00 Max. Si 1.00 Max. Cr 16.00 -18.00 P 0.04 Max. S 0.03 Max.	C .3 Max. Mn 2.0 Max. Si 0.50 Max. Ni 63.00 -70.00 Cu 28-34 Fe 2.5 Max S 0.024 Max.	C 0.10 Max. Mn .5 Max. Cr 20.0-23.0 Ni Balance Mo 8.0 - 10.0 Ti 0.4 Max. Fe 2.5 Max. Al 0.4 Max.	C .030 Max. N 2.0 Max. P .040 Max. S .030 Max. Si 1.0 Max. Ni 23.5 - 25.5 Cr 20.0 - 22.0 Mo 6.0 -7.0 Cu .75 Max. N .18 -25	C 0.08 Max. N 0.03 Max. H 0.015 Max. O 0.18 Max. Fe 0.2 Max. Ti Balance		
PHYSICAL PROPERTIES									
Density, Lb/Cu. In.	0.29	0.28	0.278	0.319	0.305	0.291	0.163	0.283	
Mod. of Elasticity in Tension x 10 ⁶ PSI	29.0	30.2	29.0	26.0	30.0	28.3	15.0	30.0	
Structure	Austenitic	Ferritic	Ferritic	-	-	Austenitic	Alpha	Ferritic	
Mean Coefficient of Thermal Expansion per °F. x 10 ⁻⁶	32 - 212°F: 8.9 32 - 600°F: 9.0 32 - 1000°F: 9.70 32 - 1200°F: 10.30	5.8 6.12 6.60 6.86	5.8 6.10 6.30 6.60	7.7 8.80 9.10 9.30	7.4 - - -	8.5 8.8 9.1 9.5	4.6 5.30 5.50 5.70	6.3 7.30 7.90 8.20	
Melting Range	2500 - 2550°F	2500 - 2550°F	2500 - 2550°F	2500 - 2550°F	2500 - 2550°F	2500 - 2550°F	2500 - 2550°F	-	
ELECTRICAL PROPERTIES	Non-Magnetic	-	Magnetic	-	Non-Magnetic	-	Non-Magnetic	Magnetic	
Magnetic Permeability, Annealed	μ = 1.008	-	μ = 600-1100	-	μ = 1.006	μ = 1.0028	μ = 1.00005	1500-2000	
Elec. Resistivity, Microhm-cm, 70°F	74.00	60.00	60.00	5.10	12.90	89.0	4.20	17.20	
MECHANICAL PROPERTIES									
Rockwell Hardness	70 - 85R _B	88R _B Max	75 - 90R _B	60 - 80R _B	88 - 94R _B	80 - 95R _B	64 - 70R _B	80 - 95R _B	
Ultimate, Tensile Strength	115,000	55,000	55,000	70,000	120,000	95,000	-	84,000	
BAND-IT Min. Spec. (PSI), Typical (PSI)	120,000	68,000	75,000	75,000	130,000	110,000	46,000	90,000	
Yield Strength,	75,000	25,000	40,000	32,000	60,000	45,000	25,000	80,000	
BAND-IT® Min. Spec. (PSI), Typical (PSI)	80,000	35,000	55,000	40,000	75,000	55,000	31,000	85,000	
% of Elongation in 2 inches,	10	20	20	30	30	30	24	5	
BAND-IT® Min. Spec., Typical (%)	15	33	25	40	40	45	30	8	
Tensile Strength at Elevated Temps., Short Time Tests, (PSI)	1300°F: 48,000 1500°F: 28,000 1700°F: 18,000	5,000 1,500 -	15,000 8,000 5,000	- - -	- - -	- - -	- - -	- - -	
CORROSION RESISTANCE									
Mild Atmospheric and Fresh Water	Excellent	Good	Good	Good	Good	Good	Good	Good/Fair	
Industrial Atmosphere	Very Good	Good	Good	Good	Good	Good	Good	Fair	
Marine Atmosphere	Very Good	Poor	Poor	Excellent	Excellent	Excellent	Good	Poor	
Salt Water	Good	No	No	Excellent	Excellent	Excellent	Good	No	
Mild Chemical	Very Good	Fair	Fair	Good	Good	Good	Good	No	
Oxidizing Chemical	Good	Fair	Fair	Good	Good	Good	*	No	
Reducing Chemical	Good	Good	No	Good	Good	Good		No	
USE	General BAND-IT®	Pulp/Paper, Chemical, Marine Auto Agriculture Special	Interior Architecture, Automotive Trim Automotive, Universal Clamp	Electronics, Marine, Chemical, Petroleum Band/Buckle	Chemical, Nuclear, Aerospace, Marine Band/Buckle, Preformed Clamps	Chemical, Nuclear, Aerospace, Marine Special	Corrosive Service Good for Machinery Weldable Band/Buckle	Indoor, Mild Atmosphere Band/Buckle Preformed Clamps	

All values in table are reference only.

Index

Part No	Page	Part No	Page	Part No	Page	Part No	Page	Part No	Page	Part No	Page
A10088	29	AE0419	21	AS2219	23	BFES-A1230-090-D900C	12	C27799	17	CP12S9	35
A10089	29	AE0429	21	AS2229	23	BL2119	25	C30399	14	CP1499	35
A11089	29	AE0439	21	AS2239	23	BL2129	25	C30499	14	CP14S9	35
A30199	29	AE0449	21	AS2249	23	BL2139	25	C30599	14	CP1699	35
A31089	29	AE0459	21	AS2259	23	BL2149	25	C30699	14	CP16S9	35
A31188	29	AE0469	21	AS4119	23	BL2159	25	C35399	15	CP1899	35
A31189	29	AE0479	21	AS4129	23	C00169	13	C35499	15	CP18S9	35
A40199	29	AE0489	21	AS4139	23	C00269	33	C35599	15	CP2099	35
A47599	29	AE0499	21	AS4149	23	C00369	13	C35699	15	CP20S9	35
A48599	29	AE0509	21	AS4159	23	C07569	13	C40099	13	CP2499	35
A49099	29	AE0519	21	AS4219	23	C08569	13	C40299	15	CP24S9	35
A50099	29	AE0529	21	AS4229	23	C12799	14	C40399	15	CP2899	35
A50189	29	AE0609	21	AS4239	23	C12899	14	C403Y9	15	CP28S9	35
A50599	29	AE1118	25	AS4249	23	C12999	14	C40499	15	CP3119	35
A50699	29	AE1128	25	AS4259	23	C13099	14	C404B9	15	CP311S	35
A59099	29	AE1138	25	AS6219	23	C13199	14	C40599	15	CP3299	35
A91079	23	AE1148	25	AS6229	23	C13399	14, 36	C405G9	15	CP32S9	35
A92079	23	AE1158	25	AS6239	23	C13499	14, 36	C40699	15	CP3999	35
A94079	24	AE2009	24	AS6249	23	C13599	14	C406R9	15	CP3S99	35
A95079	25	AE2018	25	AS6259	23	C13699	14	C41399	16	CP4S99	35
AA1118	25	AE3118	25	AU2029	24	C14499	14	C41499	16	CP5S99	35
AA1128	25	AE3128	25	AU2039	24	C14599	14	C41599	16	CP6S99	35
AA1138	25	AE3138	25	AU2049	24	C14699	14	C41699	16	CP7S99	35
AA1148	25	AE3148	25	AU2059	24	C14899	14	C42499	16	CP8S99	35
AA1158	25	AE3158	25	AU2069	24	C14999	14	C44499	15	CP9S99	35
AA3118	25	AE3168	25	AU2079	24	C15099	14	C444B9	15	D00189	18
AA3128	25	AE3178	25	AU2089	24	C15199	14	C44599	15	D00299	18
AA3138	25	AE4259	16	AU2099	24	C15399	14	C445G9	15	D00499	18
AA3148	25	AE4269	16	AU2159	24	C15499	14	C44699	15	D00799	18
AA3158	25	AE4279	16	BFES-A0830-020	11	C15599	14	C446R9	15	D00889	18
AA3168	25	AE4329	15	BFES-A0830-024	11	C15699	14	C45299	15	D00999	18
AA3178	25	AE4339	15	BFES-A0830-027	11	C16189	14	C45399	15	D02189	18
AA8638	25	AE4349	15	BFES-A0830-034	11	C16389	14	C45499	15	D02299	18
AA8648	25	AE4359	15	BFES-A0830-041	11	C17199	14	C45599	15	D04099	19
AA8658	25	AE4369	15	BFES-A0830-048	11	C17399	14	C45699	15	D04599	19
AA8668	25	AE4529	15	BFES-A0830-055	11	C18189	14	C72099	15	D05089	16
AA8678	25	AE4539	15	BFES-A0830-069	11	C18389	14	C72299	15	D05199	16
AE0109	21	AE4549	15	BFES-A0830-076	11	C19199	14	C72499	15	D05299	16
AE0119	21	AE4559	15	BFES-A0830-090	11	C19399	14	C72599	15	D05399	16
AE0129	21	AE4569	15	BFES-A1230-020	11	C20299	13	C72699	15	D05499	16
AE0139	21	AE4759	16	BFES-A1230-024	11	C20399	13	C80399	16	D05599	16
AE0149	21	AE4769	16	BFES-A1230-027	11	C203Y9	13	C80499	16	D05699	16
AE0159	21	AE4779	16	BFES-A1230-034	11	C204C9-P000	12	C80599	16	D05799	16
AE0169	21	AE6019	24	BFES-A1230-041	11	C204C9-P100	12	C80699	16	D30288	18
AE0179	21	AE6029	24	BFES-A1230-048	11	C204C9-P200	12	C85399	16	D31099	18
AE0189	21	AE6039	24	BFES-A1230-055	11	C204C9-P300	12	C85499	16	D31599	18
AE0199	21	AE6049	24	BFES-A1230-069	11	C204C9-P400	12	C85599	16	D50089	19
AE0209	21	AE6059	24	BFES-A1230-076	11	C204C9-P500	12	C85699	16	D50489	19
AE0219	21	AE6119	24	BFES-A1230-090	11	C204C9-P550	12	C90399	15	D51089	19
AE0229	21	AE6129	24	BFES-A0830-020-D900C	12	C204C9-P600	12	C90499	15	D51289	19
AE0239	21	AE6139	24	BFES-A0830-024-D900C	12	C204C9-P700	12	C90599	15	D51389	19
AE0249	21	AE6149	24	BFES-A0830-027-D900C	12	C204C9-P800	12	C90699	15	E00499	39
AE0259	21	AE6159	24	BFES-A0830-034-D900C	12	C204C9-P900	12	C91399	15	E00699	39
AE0269	21	AE7019	24	BFES-A0830-041-D900C	12	C20499	12	C91499	15	E00899	39
AE0279	21	AE7029	24	BFES-A0830-048-D900C	12	C204B9	13	C91599	15	E01099	39
AE0289	21	AE7039	24	BFES-A0830-055-D900C	12	C20599	13	C91699	15	E01299	39
AE0299	21	AE7049	24	BFES-A0830-069-D900C	12	C205G9	13	CP0399	35	E01499	39
AE0309	21	AE7059	24	BFES-A0830-076-D900C	12	C206C9-P900	12	CP0499	35	E01899	39
AE0319	21	AE7119	24	BFES-A0830-090-D900C	12	C206R9	13	CP0599	35	E02099	39
AE0329	21	AE7129	24	BFES-A1230-020-D900C	12	C25299	13, 14	CP0699	35	E02299	39
AE0339	21	AE7139	24	BFES-A1230-024-D900C	12	C25399	13	CP0799	35	E02899	39
AE0349	21	AE7149	24	BFES-A1230-027-D900C	12	C25499	13	CP0899	35	E03099	39
AE0359	21	AE7159	24	BFES-A1230-034-D900C	12	C25499-D900	12	CP0999	35	E03299	39
AE0369	21	AS2119	23	BFES-A1230-041-D900C	12	C25599	13	CP1099	35	E03499	39
AE0379	21	AS2129	23	BFES-A1230-048-D900C	12	C25699	13	CP10S9	35	E03699	39
AE0389	21	AS2139	23	BFES-A1230-055-D900C	12	C25699-D900	12	CP1199	35	E03899	39
AE0399	21	AS2149	23	BFES-A1230-069-D900C	12	C27599	17	CP11S9	35	E04099	39
AE0409	21	AS2159	23	BFES-A1230-076-D900C	12	C27699	17	CP1299	35	E04299	39



Index

Part No	Page	Part No	Page	Part No	Page	Part No	Page	Part No	Page	Part No	Page
E04499	39	ID4409	20	JS3139	33	K04299	25	M17598	31	UL1046	10
E04699	39	ID4419	20	JS3149	33	K04399	25	M18098	31	UL1056	10
E10699	39	ID4429	20	JS3159	33	K04499	25	M21099	36	UL1070	10
E12299	39	ID4609	20	JS3169	33	K04599	25	M21199	36	UL1086	10
E13499	39	ID4619	20	JS3179	33	K04699	25	M21899	36	UL1096	10
E60699	39	ID4629	20	JS3189	33	K04799	25	M50389	24	UL1106	10
E61299	39	IT Tools	27	JS3199	33	K04899	25	O10S99	35	UL1116	10
E62299	39	J02069	13	JS3219	33	K04999	25	O16S99	35	UL2020	10
E63499	39	J07599	13	JS3279	33	K50289	24	O20S99	35	UL2024	10
E64099	39	J10099	17	JS3309	33	KE0128	24	O311S9	35	UL2028	10
E79899	39	JS2019	33	JS3319	33	KE0138	24	O316S9	35	UL2032	10
E80099	39	JS2029	33	JS3339	33	KE0148	24	O325S9	35	UL2036	10
E80299	39	JS2039	33	JS3349	33	KE0158	24	O32S99	35	UL2040	10
E80499	39	JS2049	33	JS3369	33	KE0168	24	Q70499	16	UL2044	10
E80699	39	JS2059	33	JS3379	33	KE0178	24	Q71499	16	UL2048	10
E80899	39	JS2069	33	JS3439	33	KE0188	24	QS2019	34	UL2052	10
E81299	39	JS2079	33	JS3459	33	KE0328	24	QS2029	34	UL2060	10
E81499	39	JS2089	33	JS3469	33	KE0338	24	QS2039	34	UL2068	10
E81699	39	JS2099	33	JS3479	33	KE0348	24	QS2049	34	UL2076	10
F10689	39	JS2109	33	JS3489	33	KE0358	24	QS2059	34	UL2084	10
F10889	39	JS2119	33	JS3499	33	KE0368	24	QS2069	34	UL2092	10
F11089	39	JS2129	33	JS3559	33	KE0378	24	QS2079	34	UL2109	32
F11289	39	JS2139	33	JS3709	33	KE0388	24	QS2089	34	UL2119	32
F11489	39	JS2149	33	JS4019	33	KE0828	24	QS2099	34	UL2120	10
F11689	39	JS2159	33	JS4029	33	KE0848	24	QS2109	34	UL2129	32
F11889	39	JS2169	33	JS4039	33	KE0858	24	QS2119	34	UL2139	32
G40269	13	JS2179	33	JS4049	33	KE1128	24	QS2129	34	UL2149	32
G43099	13	JS2189	33	JS4059	33	KE1138	24	QS2139	34	UL2150	10
G43199	13	JS2199	33	JS4069	33	KE1148	24	QS2149	34	UL2159	32
G43299	13	JS2209	33	JS4079	33	KE1158	24	QS2159	34	UL2169	32
G44099	13	JS2219	33	JS4089	33	KE1168	24	QS2169	34	UL2175	10
G44199	13	JS2279	33	JS4099	33	KE1178	24	QS3019	34	UL2179	32
G44299	13	JS2309	33	JS4109	33	KE1188	24	QS3029	34	UL2189	32
H12289	38	JS2319	33	JS4119	33	KE1328	24	QS3039	34	UL2199	32
H13489	38	JS2339	33	JS4129	33	KE1338	24	QS3049	34	UL2279	32
H14089	38	JS2349	33	JS4139	33	KE1348	24	QS3059	34	UL2289	32
H22279	38	JS2369	33	JS4149	33	KE1358	24	QS3069	34	UL2709	32
H23479	38	JS2379	33	JS4159	33	KE1368	24	QS3079	34	UL2799	32
H60088	38	JS2409	33	JS4169	33	KE1378	24	QS3089	34	UL2839	32
H61088	38	JS2419	33	JS4219	33	KE1388	24	QS3099	34	UL2869	32
H62088	38	JS2429	33	JS4279	33	L15399	14	QS3109	34	UL2919	32
H63088	38	JS2439	33	JS4339	33	L15499	14	QS3119	34	UL4000	10, 32
H64088	38	JS2449	33	JS4349	33	L15599	14	QS3129	34	UL9010	10, 32
H65088	38	JS2459	33	JS4379	33	L15699	14	QS3139	34	ULK249	10, 32
H65688	38	JS2469	33	JS4459	33	L20399	11	QS3149	34	V00699	36
H65888	38	JS2479	33	JS4479	33	L20499	11	QS3159	34	V00899	36
H75089	38	JS2489	33	JS4489	33	L20799	11	QS3169	34	V01099	36
H75589	38	JS2499	33	JS4499	33	L20899	11	S03869	35	V01299	36
ID1009	20	JS2529	33	JS4559	33	L21099	11	S13479	38	V01699	36
ID1019	20	JS2539	33	JS4709	33	L22199	11	S14079	38	V02099	36
ID1029	20	JS2559	33	JU2428	34	L22999	11	S35099	33	V02499	36
ID1039	20	JS2569	33	JU2528	34	L24299	11	S60088	38	V02899	36
ID1049	20	JS2579	33	JU2538	34	L24699	11	S61088	38	V03299	36
ID1059	20	JS2589	33	JU2548	34	L26399	11	S62088	38	V03699	36
ID2006	20	JS2599	33	JU2568	34	L27199	11	S64088	38	V04099	36
ID2026	20	JS2709	33	JU2578	34	L27399	11	S65088	38	V04499	36
ID2036	20	JS3019	33	JU2588	34	L28499	11	S75099	33	V04899	36
ID2046	20	JS3029	33	JU2598	34	L28899	11	SET9000	31	V05299	36
ID2056	20	JS3039	33	K01199	25	L29099	11	SM1700	35	V05699	36
ID2816	20	JS3049	33	K01299	25	L29299	11	T30069	35	V06499	36
ID2826	20	JS3059	33	K01399	25	M09387	10, 32	TL3800	23	V07299	36
ID2836	20	JS3069	33	K01499	25	M15099	36	UB2549	10	V08099	36
ID2846	20	JS3079	33	K01599	25	M15199	36	UB2569	10	V08899	36
ID2859	20	JS3089	33	K01699	25	M15599	36	UL1018	10	V10499	36
ID2906	20	JS3099	33	K01799	25	M15699	36	UL1024	10	V20299	36
ID3009	20	JS3109	33	K01899	25	M15799	36	UL1028	10	V20399	36
ID4002	20	JS3119	33	K01999	25	M15899	36	UL1032	10		
ID4059	20	JS3129	33	K04199	25	M16098	31	UL1036	10		

