



BEE VALVE INC.



*Fluid Handling Components*

## **Bee Valve Inc. has stood the test of time.**

*Bee Valve Inc. traces its origin back a half-a-century to the beginning of the modern plastics industry. The company was on the developmental forefront of plastic ball valves and was one of the first companies to use glass-reinforced polypropylene for this application. The company was also on the leading edge in the development of non-metallic hose couplers and adapters in the early 1970s, utilizing glass-reinforced nylon and polypropylene for economy and strength. Bee Valve has continued to focus on providing the industry with state-of-the-art materials and components. When you turn to Bee Valve for your fluid handling needs, you're turning to the market innovator.*



# FLUID HANDLING COMPONENTS

## TABLE OF CONTENTS

### Ball Valves

Bolted Polypropylene Ball Valves.....	3
Factory Assembled Design Options.....	3
Nozzle Ball Valves.....	4
Compact Ball Valves.....	4
Ratchet Return Ball Valve.....	5
Flange Ball Valves, Bolt Connect.....	5
Single Union Polypropylene Ball Valves.....	6
Multi-Port Polypropylene Ball Valves.....	6
Manifold Ball Valve System.....	7
Flange Fitting Clamps and Gaskets.....	7
Manifold Fittings.....	8
Stainless Steel Ball Valves.....	9
Brass Ball Valves.....	9

### Strainers

T-Line Strainer.....	10
Standard Y-Strainers.....	10
Heavy Duty, High Capacity Y-Strainers.....	11
2" Quick Clean, High Capacity Y-Strainers.....	11
3" Quick Clean, High Capacity Y-Strainers.....	12
3" High Capacity Y-Strainers.....	12

### Couplers & Adapters

Nylon, Glass-Filled.....	13
Polypropylene, Glass-Filled.....	14
Polypropylene, Heavy-Duty.....	15
Food-Grade.....	16
Polyvinylidene Fluoride (PVDF).....	17
Stainless Steel.....	18
Brass.....	18
Garden Hose Fittings.....	19
Santoprene Dust Caps and Plugs.....	19
Polypropylene Elbow Couplers & Adapters.....	20
PVC Couplers & Adapters.....	20

### Hose Fittings

Hose Nipples.....	21
Elbow Fittings, Polypropylene.....	22
Adapters.....	22
Schedule 80 Threaded Polypropylene Fittings.....	23-24

### Tank Accessories

Bolted Tank Fittings, Polypropylene.....	25
Bolted Tank Fittings, Stainless Steel.....	25
Bulkhead Fittings.....	26
Accessories, Polypropylene.....	26

### Hose Clamps

T-Bolt Clamps.....	27
Flange Clamp, Manifold System.....	27
Worm Gear Clamps.....	28

### Gaskets

Bolted Tank Fitting.....	29
Bulkhead Fitting.....	29
Manifold System.....	30
Cam Coupler.....	30
Tank Lid.....	30
Shims.....	30

Pipe, Hose and Nozzle Fittings.....	31-37
-------------------------------------	-------

Push-In Tube Fittings.....	38
----------------------------	----

<b>NEW Quick Coupling Connectors</b> .....	39-42
--	-------

<b>NEW Sprayer Components</b> .....	43-44
-------------------------------------	-------

Gauges.....	45-47
-------------	-------

Replacement Parts.....	48-50
------------------------	-------

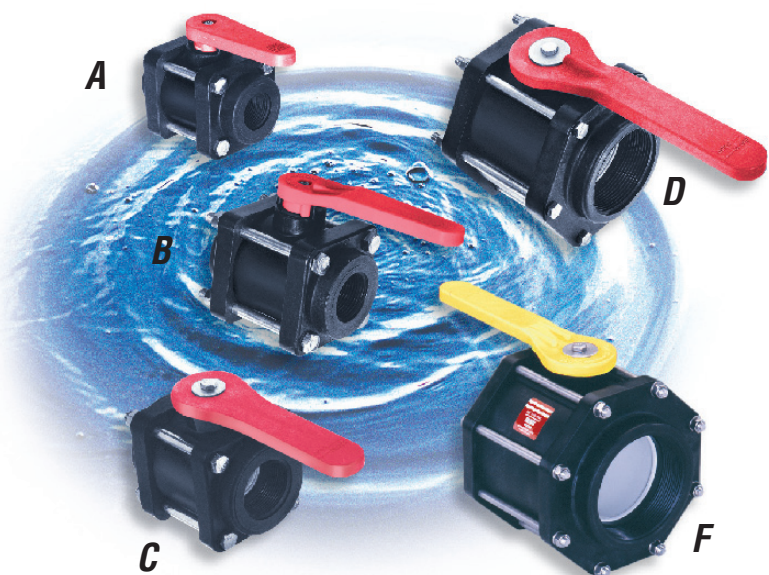
Material Quick Reference.....	51
-------------------------------	----

Basic Chemical Resistance Table.....	52-55
--------------------------------------	-------

# BOLTED POLYPROPYLENE BALL VALVES

## FEATURES

- Precision molded in glass-reinforced polypropylene for stability, strength and toughness
- Machined surfaces for easy on-off operation
- Self-aligning ball
- Viton® O-ring
- Excellent chemical resistance
- Poly-Tef seats
- Can be replaced or repaired in the field in-line (1/2"–3"SP)



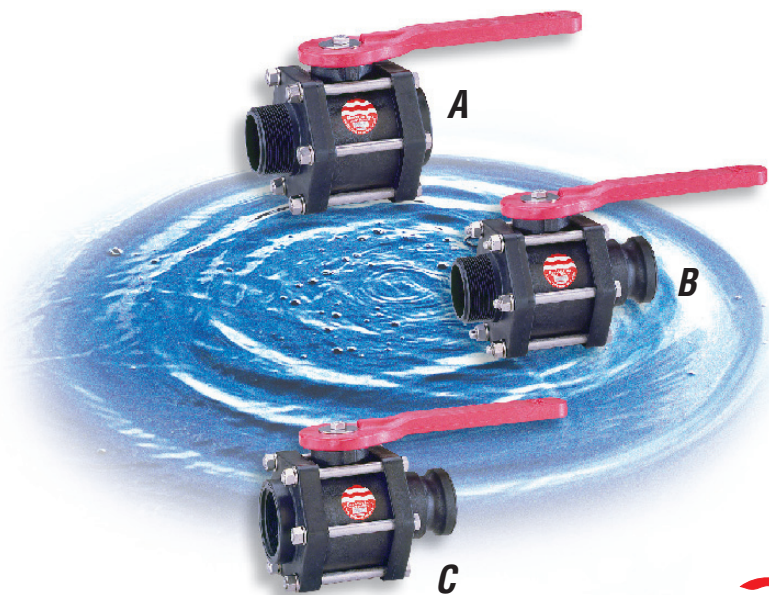
## BOLTED POLYPROPYLENE BALL VALVES

ITEM	DESCRIPTION	PART NO.	STD. PKG.	
			QTY.	WT.
A	1/2" Full Port	4011A-20	24	18
A	3/4" Full Port	4011B-20	24	17
A	1" Standard Port	4011C-20	24	17
B	1" Full Port	4011Y-20	24	24
C	1-1/4" Full Port	4011X-20	24	50
C	1-1/2" Full Port	4011D-20	24	49
C	2" Standard Port	4011E-20	24	48
D	2" Full Port	4011N-20	16	56
D	2-1/2" Full Port	4011W-20	12	51
D	3" Standard Port	4011F-20	12	49
D	3" Full Port	4011Z-20	8	48
F	4" Full Port	7012A-20	1	10

Size  
 1/2" - 1"      Operating Pressure  
 11/4" - 2"      125 psi max @ 70° F  
 3" - 4"        100 psi max @ 70° F  
                   75 psi max @ 70° F

See pages 48-49 for replacement parts

## 2" Full Port Ball Valve Factory Assembled Design Options



## FEATURES

- Full combination of threaded and adapter ends
- Molded-in threaded nipples and adapters

## 2" BOLTED BALL VALVE

ITEM	DESCRIPTION	PART NO.	STD. PKG.	
			QTY.	WT.
A	2" Full Port MPT X FPT	60112-A	8	26
B	2" Full Port MPT X M Adapter	60112-C	8	26
C	2" Full Port FPT X M Adapter	60112-D	8	26

Operating Pressure  
 100 psi max @ 70° F  
 75 psi max @ 150° F

See pages 48-49 for replacement parts

# Nozzle Valves

## FEATURES

- Convenient transfer of liquids
- Lightweight hose-end valve
- 8" long polypropylene fill spout

## NOZZLE VALVES

ITEM	DESCRIPTION	PART NO.	STD. PKG.	
			QTY.	WT.
A	1 1/2" Full Port Nozzle	4011K-20	10	26
A	2" Standard Port Nozzle	4011L-20	10	26
B	2" Full Port Nozzle	4011P-20	6	25

**Note:** Stainless steel hardware is available on all ball valves.  
Contact sales office for specific part numbers.

Size            Operating Pressure  
1 1/2" - 2"    100 psi max @ 70° F

See pages 48-49 for  
replacement parts



# Compact Polypropylene Bolted Ball Valves

## FEATURES

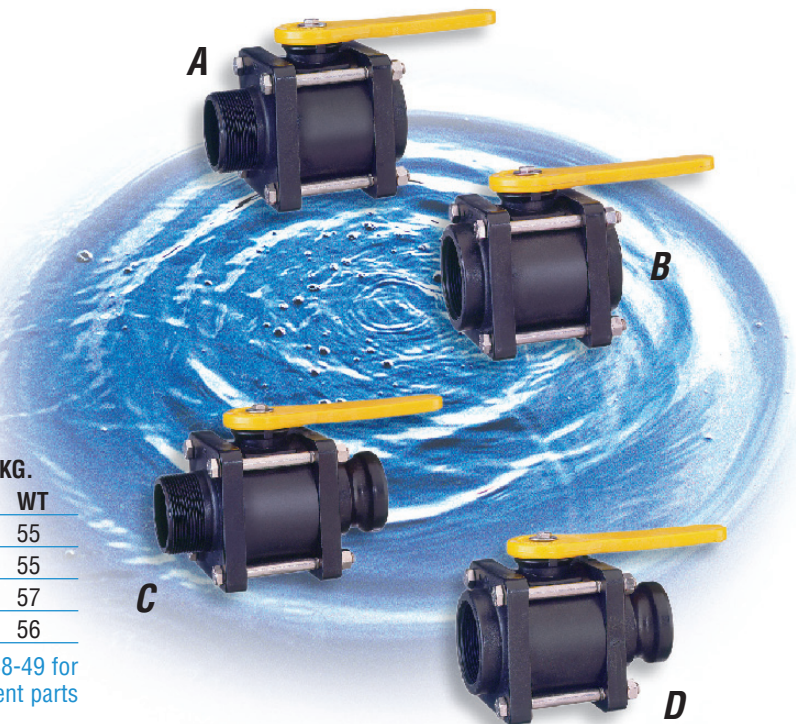
- Compact size
- Stainless steel hardware
- Four-bolt design
- Lightweight
- Glass-reinforced polypropylene
- Four design options
- All Teflon® seats
- Viton® O-Rings

## COMPACT BOLTED BALL VALVES

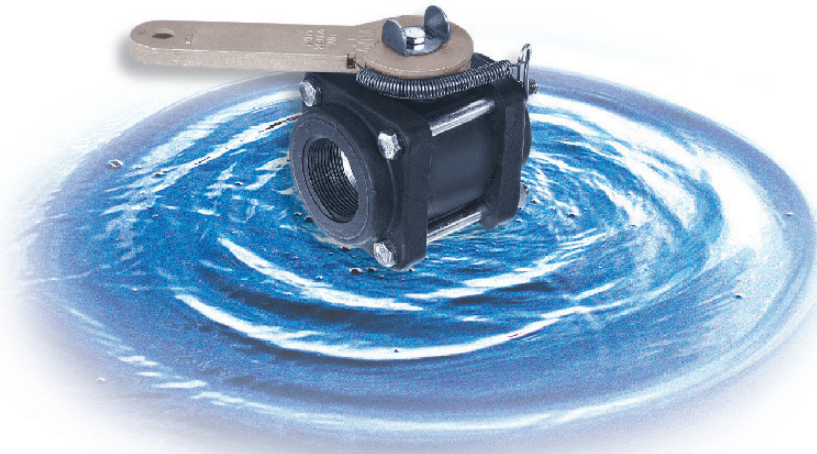
ITEM	DESCRIPTION	PART NO.	STD. PKG.	
			QTY.	WT.
A	2" Full Port MPT X FPT	30112-A	24	55
B	2" Full Port FPT X FPT	30112-B	24	55
C	2" Full Port MPT X M Adapter	30112-C	24	57
D	2" Full Port FPT X M Adapter	30112-D	24	56

Operating Pressure  
125 psi max @ 70° F  
70 psi max @ 150° F

See pages 48-49 for  
replacement parts



# Ratchet Return Ball Valve



## FEATURES

- Manufactured to exacting standards
- Designed for hard to reach applications (using rods or cables)
- Full "on" or "off"
- Fast actuating
- Stainless steel operating mechanism
- 1-1/4", 1-1/2" and 2" end cap options

## RATCHET RETURN VALVES

DESCRIPTION	PART NO.	STD. PKG.	
		QTY	WT
1-1/4" Full Port	4011T-20	10	32
1-1/2" Full Port	4011U-20	10	30
2" Standard Port	4011V-20	10	29

Operating Pressure  
125 psi max @ 70° F

## RATCHET REPLACEMENT PARTS

<b>Body</b>	4B204	<b>Bolt</b>	4H029 (Handle)	<b>Spacer</b>	4H037
<b>Anchor</b>	4H036	<b>Pin</b>	4H034 (Handle)	<b>Pin</b>	4H033 (Body)
<b>Handle</b>	4L104	<b>Ratchet</b>	4H040	<b>Spring</b>	4H042 (3")
<b>Indicator</b>	4H050	<b>Spring</b>	4H041 (1/2")	<b>Washer</b>	4H012

See page 48 for balance of valve replacement parts

# Flange Ball Valves



## FEATURES

- Single and double flange designs
- ANSI standards 4-bolt, low pressure flange

## FLANGE VALVES

ITEM	DESCRIPTION	PART NO.	STD. PKG.	
			QTY	WT
A	2-1/2" Full Port w/4-Bolt 3" ANSI Flange one end	6011W-20	4	25
A	3" Standard Port w/4-Bolt 3" ANSI Flange one end	6011F-20	4	25
B	3" Standard Port w/4-Bolt 3" ANSI Flange both ends	4011M-20	4	32
	Replacement metal handle	4L105 for item B		

Operating Pressure  
75 psi max @ 70° F

See page 49 for  
replacement parts

# Single Union Polypropylene Ball Valves

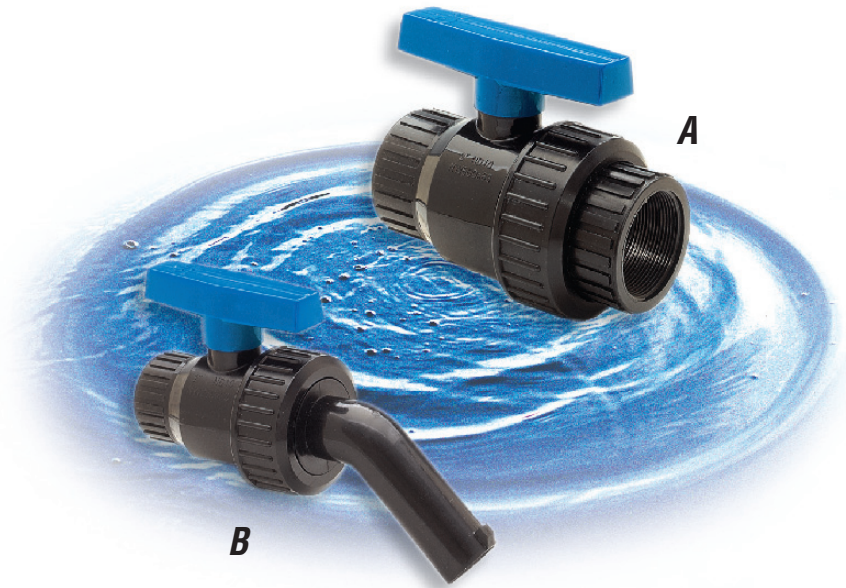
## FEATURES

- Manufactured from polypropylene
- Teflon® seats
- EPDM O-rings (Viton® kits available)
- All valves 100% pressure tested

### SINGLE UNION POLY- BALL VALVES

ITEM	DESCRIPTION	PART NO.
A	1/2" Full Port	SU050-FP
A	3/4" Full Port	SU075-FP
A	1" Full Port	SU100-FP
B	1" 45° Nozzle FP	SU100-FP-NOZ
A	1-1/4" Full Port	SU125-FP
A	1-1/2" Full Port	SU150-FP
A	2" Full Port	SU200-FP
A	3" Full Port	SU300-FP

Operating Pressure  
125 psi max @ 70° F



# 3-WAY, Multi-Port Polypropylene Ball Valves

## FEATURES

- Manufactured from polypropylene
- Teflon® seats
- EPDM O-rings (Viton® kits available)
- All valves 100% pressure tested
- Three position settings:
  - bottom-to-right
  - bottom-to-left
  - off

### MULTI-PORT BALL VALVES

ITEM	DESCRIPTION	PART NO.
C	3/4" Full Port	MPBV075-FP
D	2" Standard Port	MPBV200-SP

Operating Pressure  
125 psi max @ 70° F



# Manifold Ball Valve System

## FEATURES

- Clamp connection—no threading or rotating
- Quick and easy assembly. No pipe tape or sealant necessary
- Positive seals
- Easy on/off hose connections
- 360° orientation
- Valves and fittings are manufactured from glass-reinforced polypropylene for strength and durability. Will not rust or corrode



## Manifold Bolted Ball Valves

### FEATURES

- Self-aligning ball rotates freely against Teflon® seats
- Unique body-to-flange design allows for low torque on/off operations
- Viton® O-ring stem seal and EPDM O-ring body seal
- All valves 100% tested



### FLANGE BALL VALVES

DESCRIPTION	PART NO.
1" Full Port Flange x Flange	63028
2" Full Port Compact Flange x Flange	63123
3" Full Port Flange x Flange	63125

Recommended operating pressure  
100 psi @ 0°F • 125 psi @ 70°F • 70 psi @ 150°F

## Flange Clamp

### FEATURES

- Designed for use with flange valves and flange fittings
- Stainless Steel Construction

### WORM GEAR FLANGE FITTING CLAMPS

SIZE	PART NO.
1"	62932
2"	62933
3"	62934



### FLANGE FITTING ORIGINAL AND REPLACEMENT GASKETS

SIZE	MATERIAL	PART NO.
1"	EPDM	62935
2"	EPDM	61574
3"	EPDM	61575



## FEATURES

- Quick and easy assembly. No pipe tape or sealant necessary
- Positive seals
- Easy on/off hose connections
- 360° orientation
- Valves and fittings are manufactured from glass-reinforced polypropylene for strength and durability. Will not rust or corrode

## FLANGE FITTINGS, POLYPROPYLENE

ITEM	SIZE	DESCRIPTION	PART NO.
A	1"	Coupling, Flange	62914
	2"	Coupling, Flange	63102
	3"	Coupling, Flange	63113
B	1"	Cross, Flange	62923
	2"	Cross, Flange	63109
	3"	Cross, Flange	63119
C	1"	Elbow, Flange	62913
	2"	Elbow, Flange	63101
	3"	Elbow, Flange	63112
D	1" x 3/4"	Elbow, Flange x HB	62920
	1" x 1"	Elbow, Flange x HB	62921
	1" x 1-1/4"	Elbow, Flange x HB	62922
	1" x 1-1/2"	Elbow, Flange x HB	63107
	2" x 2"	Elbow, Flange x HB	63108
	3" x 2"	Elbow, Flange x HB	63117
	3" x 3"	Elbow, Flange x HB	63118
E	1" x 1"	Flange x FPT	62916
	2" x 2"	Flange x FPT	63104
F	1" x 3/4"	Flange x HB	62917
	1" x 1"	Flange x HB	62918
	1" x 1-1/4"	Flange x HB	62919
	1" x 1-1/2"	Flange x HB	63105
	2" x 2"	Flange x HB	63106
	3" x 2"	Flange x HB	63115
	3" x 3"	Flange x HB	63116
G	2" x 2"	Flange x Male Coupler	62926
	3" x 3"	Flange x Male Coupler	63121
H	1" x 3/4"	Flange x MPT	63098
	1" x 1"	Flange x MPT	62915
	1" x 1-1/4"	Flange x MPT	63099
	2" x 2"	Flange x MPT	63103
	3" x 3"	Flange x MPT	63114
I	1"	Plug, Flange	62924
	2"	Plug, Flange	63110
	3"	Plug, Flange	63120
J	1" w/ 1/4" FPT	Plug, Flange w/FPT	62925
K	2" x 1"	Reducing Coupling, Flange x Flange	62927
	3" x 2"	Reducing Coupling, Flange x Flange	62928
L	1"	Tee, Flange	62912
	2"	Tee, Flange	63100
	3"	Tee, Flange	63111

Size            Operating Pressure  
 1" - 2"        150 psi max @ 70°F  
 3"             125 psi max @ 70°F



## Stainless Steel Ball Valves



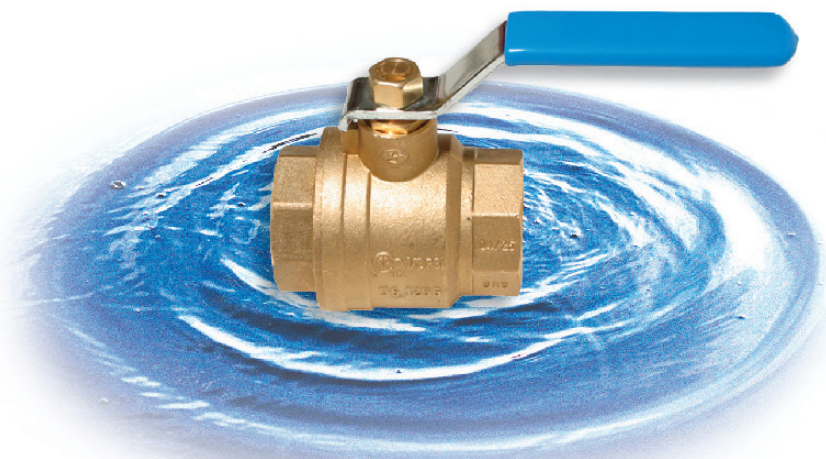
### FEATURES

- Manufactured from 316 stainless steel
- Full port construction
- Water, oil and gas rated @ 1,000 psi
- Latch lock handle performs in both open and closed positions
- Teflon® seats and seals
- Polished stainless steel ball for precise operation
- All valves 100% pressure tested

### STAINLESS STEEL BALL VALVES

DESCRIPTION	PART NO.
3/8" Full Port	VSS038
1/2" Full Port	VSS050
3/4" Full Port	VSS075
1" Full Port	VSS100
1-1/4" Full Port	VSS125
1-1/2" Full Port	VSS150
2" Full Port	VSS200
3" Full Port	VSS300

## Brass Ball Valves



**NOTE:** Valve pictured without handle lock.

### FEATURES

- Full port construction
- Water, oil and gas rated @ 600 psi WOG
- Handle locks available
- Teflon® seats and seals
- All valves 100% pressure tested

### BRASS BALL VALVES

DESCRIPTION	PART NO.
1/4" Full Port	BBV025
3/8" Full Port	BBV038
1/2" Full Port	BBV050
3/4" Full Port	BBV075
1" Full Port	BBV100
1-1/4" Full Port	BBV125
1-1/2" Full Port	BBV150
2" Full Port	BBV200

## T-Line Strainer

### FEATURES

- Glass-reinforced polypropylene body
- 304 stainless steel screens
- EPDM gaskets standard
- 20 mesh screen standard

### T-LINE POLYPROPYLENE STRAINERS

DESCRIPTION	PART NO.	MESH
1/2" T-Line Poly Strainer	LST050	20,40,80
3/4" T-Line Poly Strainer	LST075	20,40,80
1" T-Line Poly Strainer	LST100	20,40,80

**NOTE:** Please specify stainless steel mesh (20-40-80).

Operating Pressure

100 psi max @ 70° F

### REPLACEMENT SCREENS

DESCRIPTION	1/2" - 1"
T-Strainer Screen w/20 Mesh	4S512-20
T-Strainer Screen w/40 Mesh	4S512-40
T-Strainer Screen w/80 Mesh	4S512-80
Gasket (O-Ring)	4G537-00

See page 50 for replacement parts



## Standard Y-Strainers

### FEATURES

- Glass-reinforced polypropylene body & cap
- 304 stainless steel screens
- 20 mesh screen standard
- Sizes from 1/2" to 2"
- EPDM gaskets standard
- Easy access for cleaning

### Y-STRAINERS-STANDARD

DESCRIPTION	PART NO.	MESH
1/2" Poly Y-Strainer	LSY050	20,40,80
3/4" Poly Y-Strainer	LSY075	20,40,80
1" Poly Y-Strainer	LSY100	20,40,80
1-1/4" Poly Y-Strainer	LSY125	20,40,80
1-1/2" Poly Y-Strainer	LSY150	12,20,40,80
2" Poly Y-Strainer	LSY200	12,20,40,80

**NOTE:** Please specify stainless steel mesh (20-40-80).

Operating Pressure

90 psi max @ 70° F

### REPLACEMENT SCREENS

DESCRIPTION	1/2" - 3/4"	1" - 1-1/4"	1-1/2" - 2"
Screen/20 Mesh	4S509-20	4S510-20	4S511-20
Screen/40 Mesh	4S509-40	4S510-40	4S511-40
Screen/80 Mesh	4S509-80	4S510-80	4S511-80
Gasket (O-Ring)	4G452-00	4G750-00	4G561-00

See page 50 for replacement parts



# Heavy Duty, High Capacity Y-Strainers



## FEATURES

- Glass-reinforced polypropylene body & cap
- 5" long full-flow screen
- 316 stainless steel screens
- Easy access for cleaning
- EPDM gaskets standard
- Viton® seal and O-ring

## Y-STRAINERS-HIGH CAPACITY

DESCRIPTION	PART NO.	MESH
1-1/2" Heavy Duty Y-Strainer	4187A	14,20,40,80,100
2" Heavy Duty Y-Strainer	4187B	14,20,40,80,100

**NOTE:** Please specify stainless steel mesh (14-20-40-80-100).

Operating Pressure  
100 psi max @ 70° F

## REPLACEMENT SCREENS-5 in.

DESCRIPTION	Part No.
14 Mesh Screen-5"	4S501
20 Mesh Screen-5"	4S505
40 Mesh Screen-5"	4S502
80 Mesh Screen-5"	4S503
100 Mesh Screen-5"	4S504

See page 48 for  
replacement parts

# 2" Quick Clean, High Capacity Y-Strainer



## FEATURES

- Heavy duty glass-reinforced polypropylene
- 316 stainless steel screens
- 8" long full-flow screen
- 3" cam lever cap for easy cleaning
- Viton® O-ring
- EPDM gaskets standard

## QUICK CLEAN HIGH CAPACITY POLY Y-STRAINERS

DESCRIPTION	PART NO.	MESH
2" Y-Strainer	200A	6,14,40,80

**NOTE:** Please specify stainless steel mesh (6-14-40-80) 14 mesh is standard.

Operating Pressure  
100 psi max @ 70° F

## REPLACEMENT SCREENS-8 in.

DESCRIPTION	Part No.
6 Mesh Screen for Strainer-8"	4S508-6
14 Mesh Screen for Strainer-8"	4S508-14
40 Mesh Screen for Strainer-8"	4S508-40
80 Mesh Screen for Strainer-8"	4S508-80

See page 48 for  
replacement parts

# 3" Quick Clean, High Capacity Y-Strainer

## FEATURES

- Easy cleaning
- Heavy duty, glass-reinforced polypropylene body
- 4" reinforced nylon dust cap with patented safety latch
- 316 stainless steel screens - available in 1/16" or 1/8" perf
- EPDM gaskets standard

### 3" HIGH CAPACITY POLY Y-STRAINER

DESCRIPTION	PART NO.	PERF
3" Y-Strainer w/4" Dust Cap	300A-ADC	1/16", 1/8"

**NOTE:** Please specify stainless steel perf (1/16", 1/8").

Operating Pressure  
75 psi max @ 70° F

### REPLACEMENT SCREENS

DESCRIPTION	Part No.
Screen - 1/16 Perf	4S514-062
Screen - 1/8 Perf	4S514-125

See page 48 for  
replacement parts



# 3" High Capacity Y-Strainer

## FEATURES

- Heavy duty glass-reinforced polypropylene
- Extra large 316 stainless steel screens-reinforced with polypropylene—available in 6, 12, 20 and 40 mesh
- EPDM gaskets standard
- 1/2" drain plug in bottom of cap

### HIGH CAPACITY POLY Y-STRAINER

DESCRIPTION	PART NO.	MESH
3" Y-Strainer	300A	6,12,20,40

**NOTE:** Please specify stainless steel mesh (6-12-20-40) 20 mesh is standard.

Operating Pressure  
75 psi max @ 70° F

### REPLACEMENT SCREENS

DESCRIPTION	Part No.
Screen/6 Mesh	4S513-6
Screen/12 Mesh	4S513-12
Screen/20 Mesh	4S513-20
Screen/40 Mesh	4S513-40

See page 48 for  
replacement parts

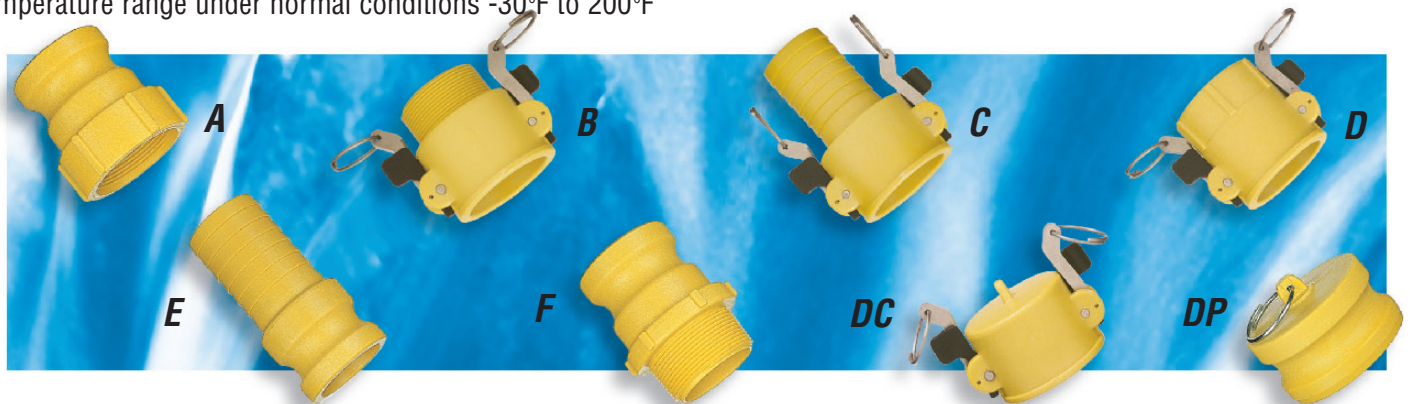


# COUPLERS & ADAPTERS

## Nylon, Glass-Filled

### FEATURES

- Safety latches available on all couplers and dust caps ranging in size from 1-1/4" to 4"
- Lightweight-1/2 the weight of aluminum
- Strong—resists cross threading, thread seizure and “out-of-round” condition
- Chemical resistant to most acids (Refer to chemical resistance table for specific recommendation)
- Non-conducting
- All couplers feature stainless steel handles & pins, blue nylon handles available
- Interchangeable with other couplers and adapters – manufactured to MIL-spec
- EPDM gaskets furnished standard. Buna-N, Viton® and Nitrile also available
- Temperature range under normal conditions -30°F to 200°F



ITEM	DESCRIPTION	1/4"	3/8"	1/2"	5/8"	3/4"	1"	1-1/4"	1-1/2"	2"	3"	4"
A	Male Adapter/Female Thread	025 A-N	037 A-N	050 A-N		075 A-N	100 A-N	125 A-N	150 A-N	200 A-N	300 A-N	400 A-N
	Std. Package — Qty.	125	125	125		125	80	50	50	80	44	18
	Std. Package — Wt.	7#	7#	7#		7#	7#	11#	9#	22#	18#	18#
B	Female Coupler/Male Thread			050 B-N		075 B-N	100 B-N	125 B-N	150 B-N	200 B-N	300 B-N	400 B-N
	Std. Package — Qty.			100		100	80	60	60	50	25	20
	Std. Package — Wt.			14#		15#	14#	27#	27#	26#	25#	28#
C	Female Coupler/Hose Shank*			050 C-N	062 C-N	075 C-N	100 C-N	125 C-N	150 C-N	200 C-N	300 C-N*	400 C-N**
	Std. Package — Qty.			100	100	90	60	65	65	44	18	12
	Std. Package — Wt.			15#	14#	14#	11#	33#	32#	27#	22#	21#
D	Female Coupler/Female Thread	025 D-N	037 D-N	050 D-N		075 D-N	100 D-N	125 D-N	150 D-N	200 D-N	300 D-N	400 D-N
	Std. Package — Qty.	100	100	100		100	60	70	70	50	25	16
	Std. Package — Wt.	16#	16#	16#		16#	11#	37#	35#	29#	21#	24#
E	Male Adapter/Hose Shank			050 E-N	062 E-N	075 E-N	100 E-N	125 E-N	150 E-N	200 E-N	300 E-N	400 E-N
	Std. Package — Qty.			125	125	75	45	50	45	30	32	16
	Std. Package — Wt.			5#	5#	5#	5#	9#	8#	9#	18#	18#
F	Male Adapter/Male Thread			050 F-N		075 F-N	100 F-N	125 F-N	150 F-N	200 F-N	300 F-N	400 F-N
	Std. Package — Qty.			90		90	100	120	120	75	33	12
	Std. Package — Wt.			5#		5#	10#	23#	23#	22#	20#	11#
DC	Female Coupler Cap					075 DC-N	100 DC-N		150 DC-N	200 DC-N	300 DC-N	400 DC-N
	Std. Package — Qty.					125	80		80	70	30	20
	Std. Package — Wt.					18#	13#		37#	35#	28#	22
DP	Male Adapter Plug					075 DP-N	100 DP-N		150 DP-N	200 DP-N	300 DP-N	400 DP-N
	Std. Package — Qty.					150	100		45	25	25	36
	Std. Package — Wt.					8#	7#		6#	6#	10#	23#

Size	Operating Pressure
1/4"-1"	175 psi max @ 70° F
1 1/4"-2"	150 psi max @ 70° F
3"	100 psi max @ 70° F
4"	50 psi max @ 70° F

\* 3" x 2-1/2" 300250C-N  
 \*\* 4" x 3" 430C-N

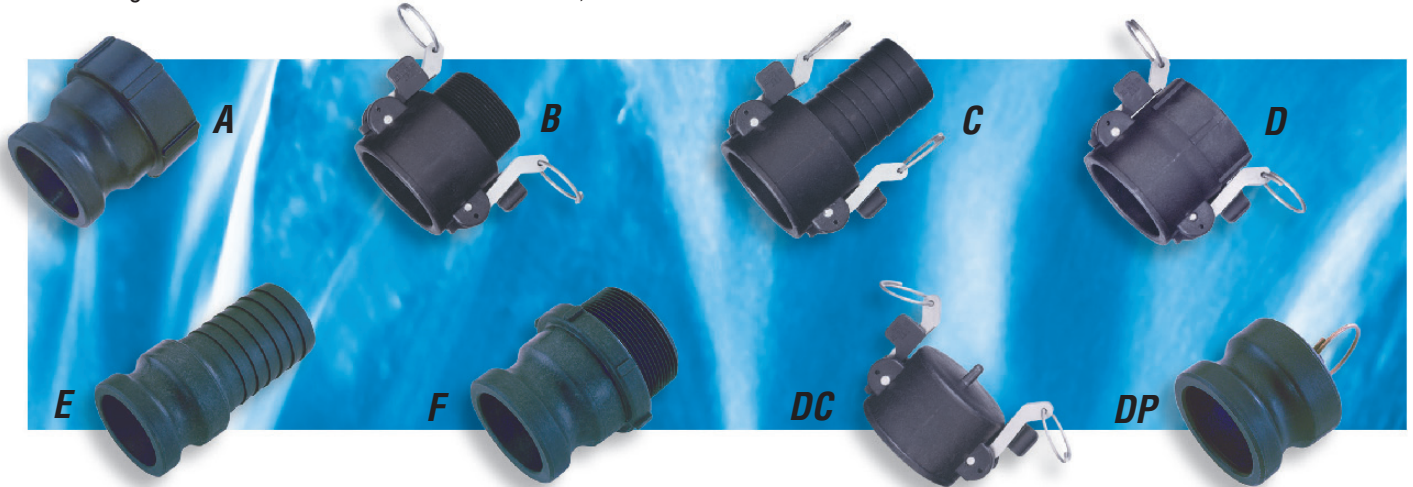
- On 1/4", 3/8" & 1/2" sizes the coupler and adapter portion is to 3/4" standard.
- On 1-1/4" size the coupler and adapter is to 1-1/2" standard.
- British thread also available.

**WARNING:** Do not operate couplings under pressure or with liquid in the lines. To prevent accidental opening fully engage and secure handles prior to pressurizing.

# Polypropylene, Glass-filled

## FEATURES

- Safety Latches available on all couplers ranging in size from 1-1/4" to 3" and dust caps from 1-1/4" to 4"
- Chemical resistant to most acids (Refer to chemical resistance tables for specific recommendation)
- Temperature range from 10°F to 180°F
- All couplers feature stainless steel handles & pins
- Interchangeable with other couplers and adapters – manufactured to MIL-spec
- EPDM gaskets furnished as standard. Buna-N, Viton® and Nitrile also available



ITEM DESCRIPTION	1/4"	3/8"	1/2"	3/4"	1"	1-1/4"	1-1/2"	2"	3"	4"
A Male Adapter/Female Thread	025 A-M	037 A-M	050 A-M	075 A-M	100 A-M	125 A-M	150 A-M	200 A-M	300 A-M	
Std. Package — Qty.	125	125	125	125	80	50	50	80	44	
Std. Package — Wt.	7#	7#	7#	7#	7#	11#	9#	22#	18#	
B Female Coupler/Male Thread			050 B-M	075 B-M	100 B-M	125 B-M	150 B-M	200 B-M	300 B-M	
Std. Package — Qty.			100	100	80	60	60	50	25	
Std. Package — Wt.			14#	15#	14#	27#	27#	26#	25#	
C Female Coupler/Hose Shank			050 C-M	075 C-M	100 C-M	125 C-M	150 C-M	200 C-M	300 C-M	
Std. Package — Qty.			100	90	60	65	65	44	18	
Std. Package — Wt.			15#	14#	11#	33#	32#	27#	22#	
D Female Coupler/Female Thread	025 D-M	037 D-M	050 D-M	075 D-M	100 D-M	125 D-M	150 D-M	200 D-M	300 D-M	
Std. Package — Qty.	100	100	100	100	60	70	70	50	25	
Std. Package — Wt.	16#	16#	16#	16#	11#	37#	35#	29#	21#	
E Male Adapter/Hose Shank			050 E-M	075 E-M	100 E-M	125 E-M	150 E-M	200 E-M	300 E-M	
Std. Package — Qty.			125	75	45	50	45	30	32	
Std. Package — Wt.			5#	5#	5#	9#	8#	9#	18#	
F Male Adapter/Male Thread			050 F-M	075 F-M	100 F-M	125 F-M	150 F-M	200 F-M	300 F-M	400 F-M
Std. Package — Qty.			90	90	100	120	120	75	33	12
Std. Package — Wt.			5#	5#	10#	23#	23#	22#	20#	11#
DC Female Coupler Cap				075 DC-M	100 DC-M		150 DC-M	200 DC-M	300 DC-M	400 DC-M
Std. Package — Qty.				125	80		80	70	30	20
Std. Package — Wt.				18#	13#		37#	35#	28#	22#
DP Male Adapter Plug				075 DP-M	100 DP-M		150 DP-M	200 DP-M	300 DP-M	400 DP-M
Std. Package — Qty.				150	100		45	25	25	36
Std. Package — Wt.				8#	7#		6#	6#	10#	23#

Size	Operating Pressure
1/4"-1"	125 psi max @ 70° F
1 1/4"-2"	100 psi max @ 70° F
3"	75 psi max @ 70° F
4"	35 psi max @ 70° F

- On 1/4", 3/8" & 1/2" sizes the coupler and adapter portion is to 3/4" standard.
- On 1-1/4" size the coupler and adapter is to 1-1/2" standard.

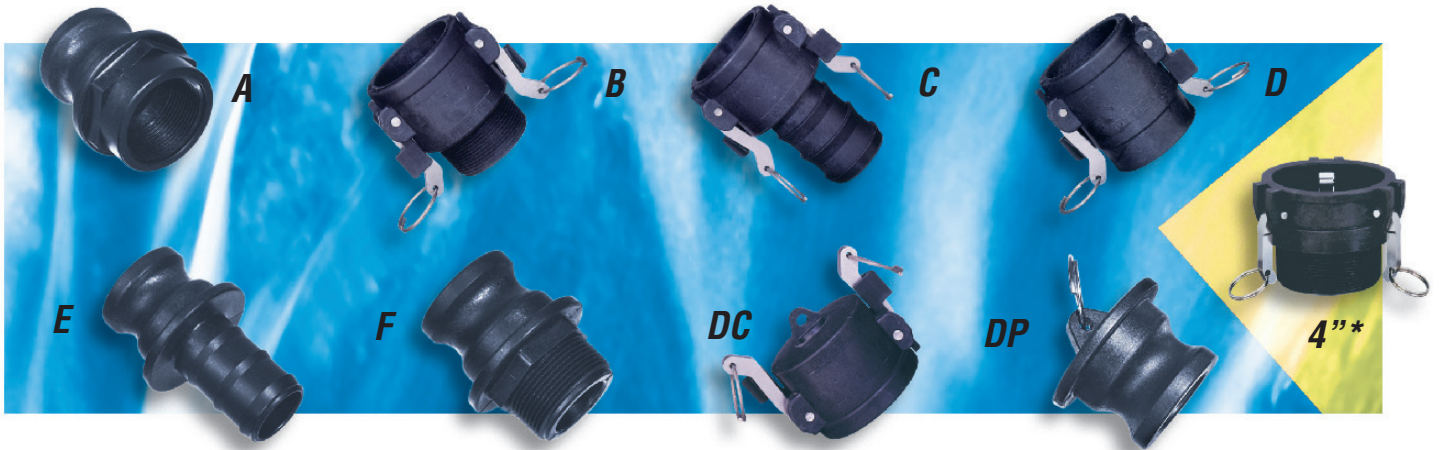
**WARNING:** Do not operate couplers under pressure or with liquid in the lines. To prevent accidental opening fully engage and secure handles prior to pressurizing.

- British threads also available.

# Polypropylene, Heavy-Duty

## FEATURES

- **Extra thick walls, extra strength**
- Safety Latches available on all couplers ranging in size from 1-1/4" to 3" and dust caps from 1-1/4" to 4"
- Manufactured from glass-reinforced polypropylene for stability, strength and toughness
- Chemical resistant to most acids (Refer to chemical resistance tables for specific recommendation)
- EPDM gaskets furnished as standard. Buna-N, Viton® and Nitrile also available
- Interchangeable with other couplers and adapters – manufactured to MIL-spec
- All couplers feature stainless steel handles, rings & pins
- Temperature range from 10° F to 180° F



ITEM	DESCRIPTION	1/2"	3/4"	1"	1-1/4"	1-1/2"	2"	3"	4"
A	Male Adapter/Female Thread	050-A	075-A	100-A	125-A	150-A	200-A	300-A	400-A
	Std. Package — Qty.	6	6	6	6	12	12	12	—
	Std. Package — Wt.	1#	1#	1#	1#	4#	4#	1#	1.5 # ea
B	Female Coupler/Male Thread	050-B	075-B	100-B	125-B	150-B	200-B	300-B	400-B*
	Std. Package — Qty.	6	6	6	6	12	12	6	3 handles
	Std. Package — Wt.	1#	1#	2#	3#	7#	7#	7#	2.1 # ea
C	Female Coupler/Hose Shank	050-C	075-C	100-C	125-C	150-C	200-C	300-C	400-C*
	Std. Package — Qty.	6	6	6	6	12	12	6	3 handles
	Std. Package — Wt.	1#	1#	1#	3#	8#	8#	8#	2.4 # ea
D	Female Coupler/Female Thread	050-D	075-D	100-D	125-D	150-D	200-D	300-D	400-D*
	Std. Package — Qty.	6	6	6	6	12	12	6	3 handles
	Std. Package — Wt.	1#	1#	1#	8#	8#	7#	8#	2.2 # ea
E	Male Adapter/Hose Shank	050-E	075-E	100-E	125-E	150-E	200-E	300-E	400-E
	Std. Package — Qty.	6	6	6	6	12	12	6	—
	Std. Package — Wt.	1#	1#	1#	1#	3#	4#	5#	1.9 # ea
F	Male Adapter/Male Thread	050-F	075-F	100-F	125-F	150-F	200-F	300-F	400-F
	Std. Package — Qty.	6	6	6	6	12	12	6	—
	Std. Package — Wt.	1#	1#	1#	1#	3#	4#	5#	1.7 # ea
DC	Female Coupler Cap	050-DC	075-DC	100-DC	125-DC	150-DC	200-DC	300-DC	400-DC*
	Std. Package — Qty.	6	6	6	6	12	12	6	3 handles
	Std. Package — Wt.	1#	1#	2#	3#	6#	7#	6#	1.8 # ea
DP	Male Adapter Plug	050-DP	075-DP	100-DP	125-DP	150-DP	200-DP	300-DP	400-DP
	Std. Package — Qty.	6	6	6	6	12	12	6	—
	Std. Package — Wt.	1#	1#	1#	1#	3#	4#	4#	0.6 # ea

**WARNING:** Do not operate couplers under pressure or with liquid in the lines. To prevent accidental opening fully engage and secure handles prior to pressurizing.

• British threads also available.

Size  
1/2"-2"  
3"  
4"

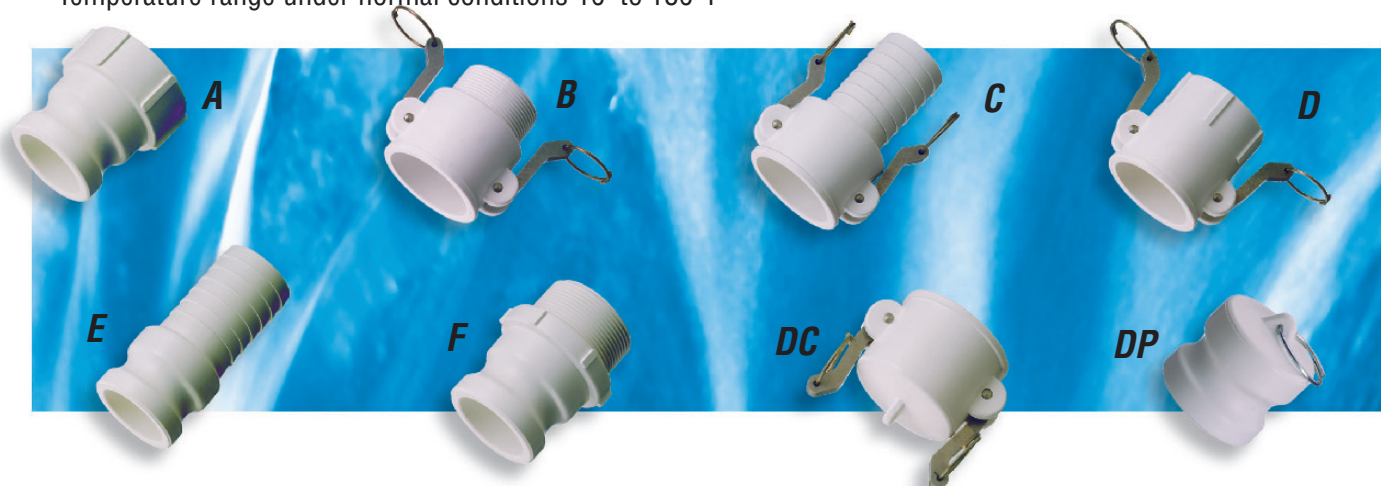
Operating Pressure  
125 psi max @ 70° F  
100 psi max @ 70° F  
75 psi max @ 70° F

**\* 4" Couplers have  
3 cam handles**

# Food-Grade Filled Polypropylene

## FEATURES

- Chemical Resistant to most acids (Refer to chemical resistance tables for specific recommendation)
- FDA / NSF compliant
- All couplers feature stainless steel handles & pins
- Interchangeable with other couplers and adapters – manufactured to MIL-spec
- Nitrile gaskets furnished as standard. EPDM, Buna-N and Viton® also available
- Good mechanical strength
- Resistance to alkalies, salts and alcohols
- Resistance to animal, vegetable and mineral oils
- Resistance to phosphoric and hydrochloric acids
- Temperature range under normal conditions 10° to 180° F



ITEM DESCRIPTION	1/4"	3/8"	1/2"	3/4"	1"	1-1/4"	1-1/2"	2"	3"
A Male Adapter/Female Thread				075 A-F	100 A-F		150 A-F	200 A-F	300 A-F
Std. Package — Qty.				125	80		50	80	44
Std. Package — Wt.				7#	7#		9#	22#	18#
B Female Coupler/Male Thread				075 B-F	100 B-F		150 B-F	200 B-F	300 B-F
Std. Package — Qty.				100	80		60	50	25
Std. Package — Wt.				15#	14#		27#	26#	25#
C Female Coupler/Hose Shank				075 C-F	100 C-F		150 C-F	200 C-F	300 C-F
Std. Package — Qty.				90	60		65	44	18
Std. Package — Wt.				14#	11#		32#	27#	22#
D Female Coupler/Female Thread				075 D-F	100 D-F		150 D-F	200 D-F	300 D-F
Std. Package — Qty.				100	60		70	50	25
Std. Package — Wt.				16#	11#		35#	29#	21#
E Male Adapter/Hose Shank				075 E-F	100 E-F		150 E-F	200 E-F	300 E-F
Std. Package — Qty.				75	45		45	30	32
Std. Package — Wt.				5#	5#		8#	9#	18#
F Male Adapter/Male Thread				075 F-F	100 F-F		150 F-F	200 F-F	300 F-F
Std. Package — Qty.				90	100		120	75	33
Std. Package — Wt.				5#	10#		23#	22#	20#
DC Female Coupler Cap				075 DC-F	100 DC-F		150 DC-F	200 DC-F	300 DC-F
Std. Package — Qty.				125	80		80	70	30
Std. Package — Wt.				18#	13#		37#	35#	28#
DP Male Adapter Plug				075 DP-F	100 DP-F		150 DP-F	200 DP-F	300 DP-F
Std. Package — Qty.				150	100		45	25	25
Std. Package — Wt.				8#	7#		6#	6#	10#

AVAILABLE AS SPECIAL ORDER ONLY

AVAILABLE AS SPECIAL ORDER ONLY

Size	Operating Pressure
1/4"-1"	125 psi max @ 70° F
1 1/4"-2"	100 psi max @ 70° F
3"	50 psi max @ 70° F

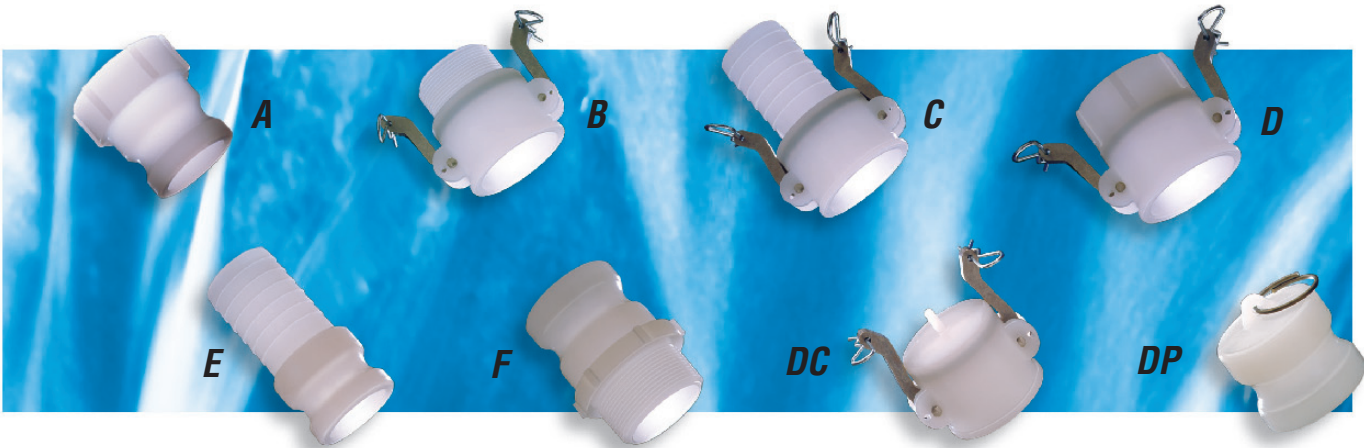
- On 1/4", 3/8" & 1/2" sizes the coupler and adapter portion is to 3/4" standard.
- On 1-1/4" size the coupler and adapter is to 1-1/2" standard.

**WARNING:** Do not operate couplers under pressure or with liquid in the lines. To prevent accidental opening fully engage and secure handles prior to pressurizing.

# Polyvinylidene Fluoride (PVDF)

## FEATURES

- Chemical resistant to most acids (Refer to chemical resistance tables for specific recommendation)
- All couplers feature stainless steel handles & pins
- Interchangeable with other couplers and adapters
- EPDM gaskets furnished as standard. Buna-N, Viton® and Nitrile also available
- Withstands high temperature
- Nonflammable and self-extinguishing
- UV stable in the visible spectrum
- FDA / NSF compliant
- Interchangeable with other couplers and adapters – manufactured to MIL-spec
- Temperature range under normal conditions -20°F to 300°F



ITEM DESCRIPTION	1/4"	3/8"	1/2"	3/4"	1"	1-1/2"	2"	3"
A Male Adapter/Female Thread	025 A-V	037 A-V	050 A-V	075 A-V	100 A-V	150 A-V	200 A-V	300 A-V
Std. Package — Qty.	125	125	125	125	80	50	80	-
Std. Unit — Wt.	.07	.07	.07	.06	.09	.26	.26	.39
B Female Coupler/Male Thread			050 B-V	075 B-V	100 B-V	150 B-V	200 B-V	300 B-V
Std. Package — Qty.			100	100	80	60	50	-
Std. Unit — Wt.			.18	.19	.24	.54	.66	1.19
C Female Coupler/Hose Shank			050 C-V	075 C-V	100 C-V	150 C-V	200 C-V	300 C-V
Std. Package — Qty.			100	90	60	65	44	-
Std. Unit — Wt.			.19	.20	.25	.61	.82	1.53
D Female Coupler/Female Thread	025 D-V	037 D-V	050 D-V	075 D-V	100 D-V	150 D-V	200 D-V	300 D-V
Std. Package — Qty.	100	100	100	100	60	70	50	-
Std. Unit — Wt.	.22	.22	.22	.20	.26	.60	.72	1.17
E Male Adapter/Hose Shank			050 E-V	075 E-V	100 E-V	150 E-V	200 E-V	300 E-V
Std. Package — Qty.			125	75	45	45	30	-
Std. Unit — Wt.			.05	.07	.11	.26	.42	.87
F Male Adapter/Male Thread			050 F-V	075 F-V	100 F-V	150 F-V	200 F-V	300 F-V
Std. Package — Qty.			90	90	100	120	75	-
Std. Unit — Wt.			.08	.08	.14	.27	.43	.90
DC Female Coupler Cap				075 DC-V	100 DC-V	150 DC-V	200 DC-V	300 DC-V
Std. Package — Qty.				125	80	80	70	-
Std. Unit — Wt.				.17	.20	.54	.81	1.04
DP Male Adapter Plug				075 DP-V	100 DP-V	150 DP-V	200 DP-V	300 DP-V
Std. Package — Qty.				150	100	45	25	-
Std. Unit — Wt.				.07	.08	.16	.27	.47

- On 1/4", 3/8" & 1/2" sizes the coupler and adapter portion is to 3/4" standard.
- On 1-1/4" size the coupler and adapter is to 1-1/2" standard.

**WARNING:** Do not operate couplers under pressure or with liquid in the lines. To prevent accidental opening fully engage and secure handles prior to pressurizing.

Size	Operating Pressure
1/4"-1"	125 psi max @ 70° F
1 1/4"-2"	100 psi max @ 70° F
3"	75 psi max @ 70° F

## FEATURES

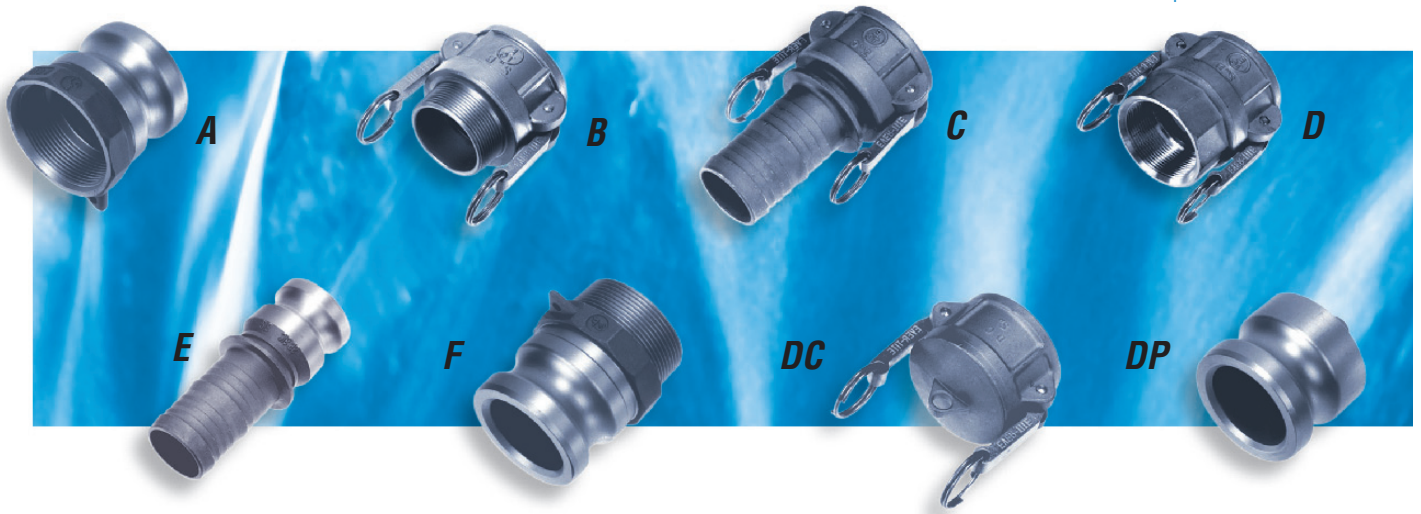
- 316 stainless steel, extra strong handles
- Interchangeable with other couplers and adapters – manufactured to MIL-spec
- Buna-N gaskets furnished standard. EPDM and Viton also available
- Chemical resistant to most acids (Refer to chemical resistance table for specific recommendation)

ITEM	DESCRIPTION	1/2"	3/4"	1"	1-1/4"	1-1/2"	2"	3"	4"
A	Male Adaptor/Female Thread	050SS-A	075SS-A	100SS-A	125SS-A	150SS-A	200SS-A	300SS-A	400SS-A
B	Female Coupler/Male Thread	050SS-B	075SS-B	100SS-B	125SS-B	150SS-B	200SS-B	300SS-B	400SS-B
C	Female Coupler/Hose Shank	050SS-C	075SS-C	100SS-C	125SS-C	150SS-C	200SS-C	300SS-C	400SS-C
D	Female Coupler/Female Thread	050SS-D	075SS-D	100SS-D	125SS-D	150SS-D	200SS-D	300SS-D	400SS-D
E	Male Adaptor/Hose Shank	050SS-E	075SS-E	100SS-E	125SS-E	150SS-E	200SS-E	300SS-E	400SS-E
F	Male Adaptor/Male Thread	050SS-F	075SS-F	100SS-F	125SS-F	150SS-F	200SS-F	300SS-F	400SS-F
DC	Female Coupler Cap	050SS-DC	075SS-DC	100SS-DC	125SS-DC	150SS-DC	200SS-DC	300SS-DC	400SS-DC
DP	Male Adapter Plug	050SS-DP	075SS-DP	100SS-DP	125SS-DP	150SS-DP	200SS-DP	300SS-DP	400SS-DP

**WARNING:** Do not operate couplers under pressure or with liquid in the lines. To prevent accidental opening fully engage and secure handles prior to pressurizing.

**NOTE:** Also available in 304SS—specify when ordering.

Size  
1/2"-2"  
3"  
Operating Pressure  
250 psi max @ 225° F  
200 psi max @ 225° F



## Brass

Refer to stainless images above for each item.

## FEATURES

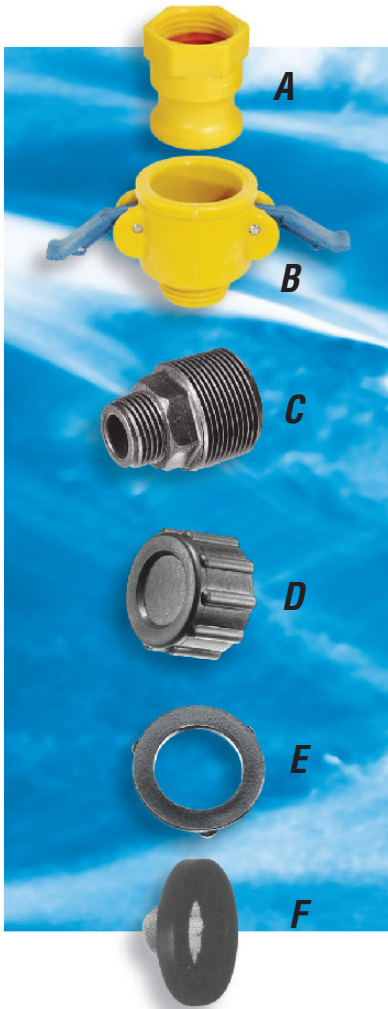
- Interchangeable with other couplers and adapters – manufactured to MIL-spec
- Buna-N gaskets furnished standard. EPDM and Viton® also available
- Chemical resistant to most acids (Refer to chemical resistance table for specific recommendation)

ITEM	DESCRIPTION	1/2"	3/4"	1"	1 1/4"	1 1/2"	2"	3"
A	Male Adaptor/Female Thread	050BR-A	075BR-A	100BR-A	125BR-A	150BR-A	200BR-A	300BR-A
B	Female Coupler/Male Thread	050BR-B	075BR-B	100BR-B	125BR-B	150BR-B	200BR-B	300BR-B
C	Female Coupler/Hose Shank	050BR-C	075BR-C	100BR-C	125BR-C	150BR-C	200BR-C	300BR-C
D	Female Coupler/Female Thread	050BR-D	075BR-D	100BR-D	125BR-D	150BR-D	200BR-D	300BR-D
E	Male Adaptor/Hose Shank	050BR-E	075BR-E	100BR-E	125BR-E	150BR-E	200BR-E	300BR-E
F	Male Adaptor/Male Thread	050BR-F	075BR-F	100BR-F	125BR-F	150BR-F	200BR-F	300BR-F
DC	Female Coupler Cap	050BR-DC	075BR-DC	100BR-DC	125BR-DC	150BR-DC	200BR-DC	300BR-DC
DP	Male Adapter Plug	050BR-DP	075BR-DP	100BR-DP	125BR-DP	150BR-DP	200BR-DP	300BR-DP

**WARNING:** Do not operate couplers under pressure or with liquid in the lines. To prevent accidental opening fully engage and secure handles prior to pressurizing.

Size  
1/2"-2"  
3"  
Operating Pressure  
150 psi max @ 70° F  
75 psi max @ 70° F

# Garden Hose Fittings



(A-B) Couplers and Adapters made from tough glass-reinforced nylon for strong, tough threads.

(C) Garden hose pump adapter made from glass-reinforced polypropylene for strong, chemical resistance performance.

(D) Garden hose knurled cap available in both nylon and polypropylene materials.

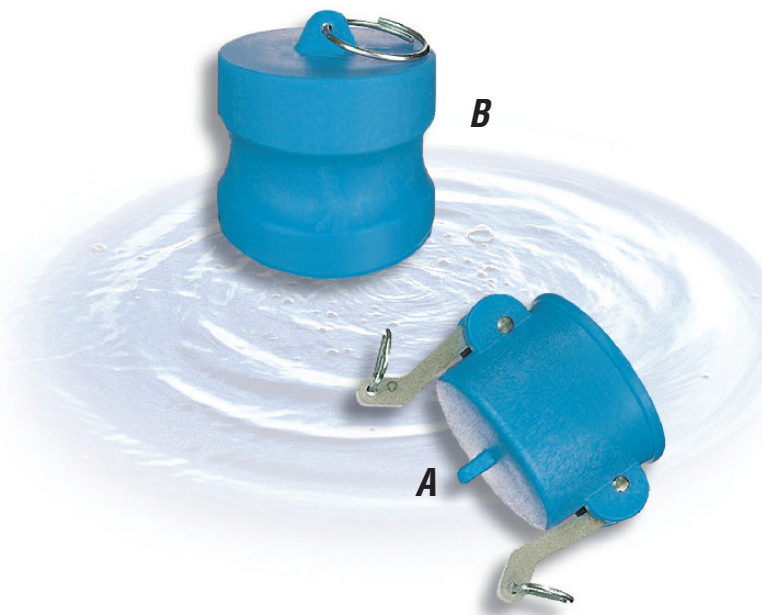
(E) Washer available in both polypropylene and vinyl materials.

(F) Filter

## GARDEN HOSE FITTINGS

ITEM	DESCRIPTION	SIZE	PART NO.
A	Male Adapter/Female GHT	3/4"	075A-NGHT
B	Female Coupler/Male GHT	3/4"	075B-NGHT
C	Extender, MGHT x MPT	3/4" x 1-1/4"	40011
D	Knurled Cap, FGHT	3/4"	Nylon – N34 Polypro – 3-N34
E	Washer	OD: 1", ID: 11/16"	Vinyl – W406V
F	Filter, 30/30 SS Mesh	OD: 1", ID: 5/8"	W160M

# Santoprene Dust Caps and Plugs



## FEATURES

- Low Cost
- Use to cap off pipes, keeps interior clean and dry
- Does not hold pressure
- Color options available
- Stainless steel arms, pins and rings standard

## DUST CAPS AND PLUGS

ITEM	DESCRIPTION	PART NO.
A	2" Female Coupler Cap	200-DCS
A	3" Female Coupler Cap	300-DCS
B	2" Male Adapter Plug	200-DPS
B	3" Male Adapter Plug	300-DPS

Operating Pressure 0 psi. Designed to protect mating fittings from damage.

# Polypropylene Elbow Couplers & Adapters

## FEATURES

- Manufactured from glass-reinforced polypropylene for stability, strength and toughness
- Chemical resistant to most acids (Refer to chemical resistance tables for specific recommendation)
- EPDM gaskets furnished as standard. Buna-N, Viton® and Nitrile also available
- Interchangeable with other couplers and adapters
- All couplers feature stainless steel handles, rings & pins
- Temperature range from 10° F to 180° F



### 90° POLYPROPYLENE

ITEM	DESCRIPTION	PART NO.	QTY.	WT.
A	2" Adapter with Female Thread	200A-90	10	4
B	2" Coupler with Male Thread	200B-90	10	8
C	2" Coupler with Hose Shank	200C-90	10	8
D	2" Coupler with Female Thread	200D-90	10	8
E	2" Adapter with Hose Shank	200F-90	10	5
F	2" Adapter with Male Thread	200F-90	10	6

90° Cam couplers & adapters also available in Ny-Glass material – contact sales office for prices

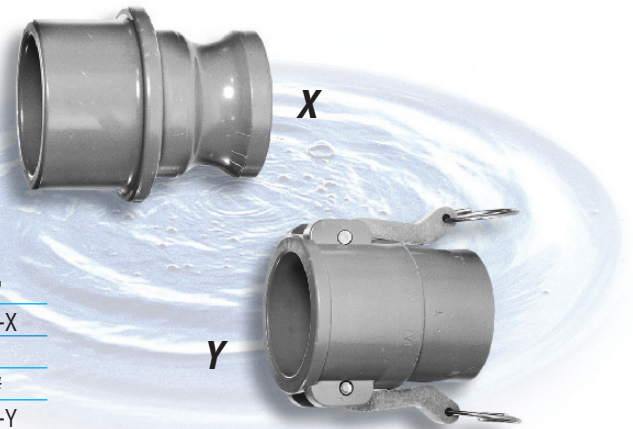
#### Operating Pressure

125 psi max @ 70° F

## FEATURES

- Use with PVC pipe
- Easy to install
- Socket solvent weld (cement)
- Stainless steel handles, rings & pins
- EPDM gaskets standard
- Economical
- Weather & corrosion resistant

# PVC Couplers & Adapters



### PVC

ITEM	DESCRIPTION	1/2"	3/4"	1"	1-1/4"	1-1/2"	2"	3"
X	PVC Cam Adapter	050-X	075-X	100-X	125-X	150-X	200-X	300-X
	Std. Pkg. - Qty	6	6	6	6	12	12	6
	Std. Pkg. - Wt.	1#	1#	1#	1#	4#	4#	5#
Y	PVC Cam Coupler	050-Y	075-Y	100-Y	125-Y	150-Y	200-Y	300-Y
	Std. Pkg. - Qty	6	6	6	6	12	12	6
	Std. Pkg. - Wt.	1#	1#	1#	3#	8#	8#	8#

Ideal for low pressure pump connections such as sump, sewage & transfer pumps.

Max. recommended working temperature 140° F

Size	Operating Pressure
1/2" - 2"	105 psi max @ 72° F
	90 psi max @ 80° F
	65 psi max @ 100° F
	25 psi max @ 140° F

Size	Operating Pressure
3"	75 psi max @ 72° F
	68 psi max @ 80° F
	50 psi max @ 100° F
	20 psi max @ 140° F

**WARNING:** Do not operate couplers under pressure or with liquid in the lines. To prevent accidental opening fully engage and secure handles prior to pressurizing.

# HOSE FITTINGS

## Hose Nipples

- Sizes 1/2" - 4"
- Available in five materials for a full range of applications

### MATERIALS

#### Glass-filled Nylon (A)

- Strong, lightweight
- Temperature range under normal conditions -30°F to 200°F

#### Glass-filled Polypropylene (B)

- Chemical resistant to most acids
- Temperature range under normal conditions 10°F to 180°F

#### Food-Grade Filled Polypropylene (C)

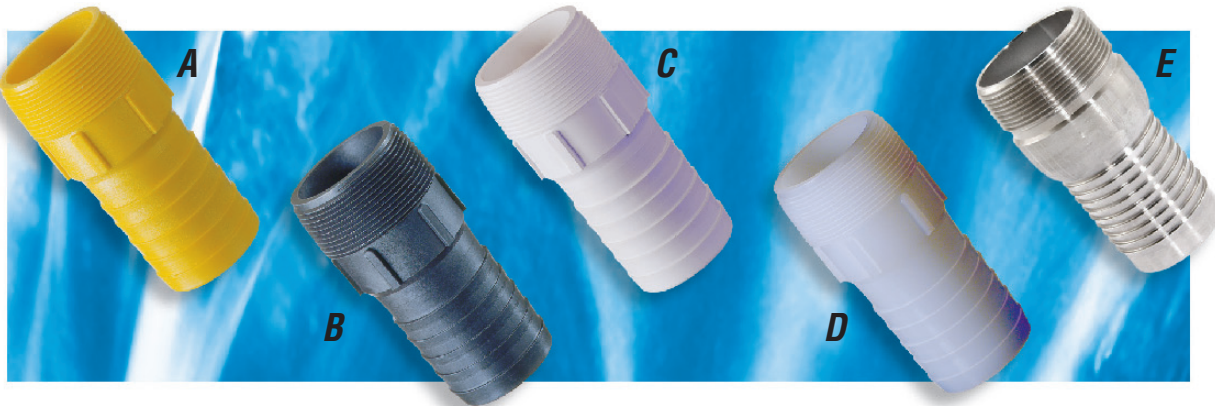
- FDA / NSF compliant
- Temperature range under normal conditions 10°F to 180°F

#### Polyvinylidene Fluoride (PVDF) (D)

- Strong and chemical resistant
- FDA / NSF compliant
- Temperature range under normal conditions -20°F to 300°F

#### 316 Stainless Steel (E)

- Excellent chemical and corrosion resistance
- Use for food service and processing
- Conductive



ITEM DESCRIPTION	1/2"	3/4"	1"	1-1/4"	1-1/2"	2"	3"	4"
A Glass-filled Nylon	050 HN-N	075 HN-N	100 HN-N	125 HN-N	150 HN-N	200 HN-N	300 HN-N	400 HN-N
Operating Pressure	175 psi max	175 psi max	175 psi max	150 psi max	150 psi max	150 psi max	100 psi max	50 psi max
B Polypropylene	050 HN-M	075 HN-M	100 HN-M	125 HN-M	150 HN-M	200 HN-M	300 HN-M	400 HN-M
Operating Pressure	125 psi max	125 psi max	125 psi max	100 psi max	100 psi max	100 psi max	75 psi max	50 psi max
C Food-Grade	050 HN-F	075 HN-F	100 HN-F	125 HN-F	150 HN-F	200 HN-F	300 HN-F	
Operating Pressure	125 psi max	125 psi max	125 psi max	100 psi max	100 psi max	100 psi max	50 psi max	
D PVDF	050 HN-V	075 HN-V	100 HN-V	125 HN-V	150 HN-V	200 HN-V	300 HN-V	
Operating Pressure	125 psi max	125 psi max	125 psi max	100 psi max	100 psi max	100 psi max	50 psi max	
E 316 Stainless Steel	050 HN-SS	075 HN-SS	100 HN-SS	125 HN-SS	150 HN-SS	200 HN-SS	300 HN-SS	400 HN-SS
Operating Pressure	250 psi max	250 psi max	250 psi max	250 psi max	250 psi max	250 psi max	200 psi max	200 psi max

Various operating pressures given above at 70°F. However, maximum listed operating pressure must be adjusted to reflect hose manufacturers recommended temperatures and pressures.

# Elbow Fittings, Polypropylene

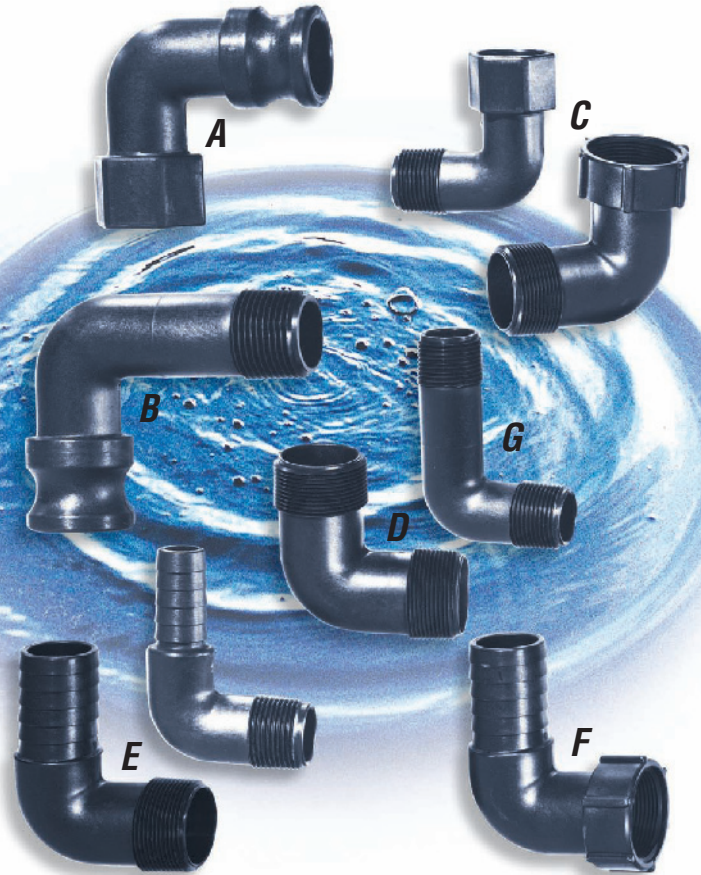
## FEATURES

- Precision molded
- Glass-reinforced polypropylene
- Interchangeable with standard cam lever couplings of all types

### ELBOW FITTINGS

ITEM	DESCRIPTION	3/4"	1-1/2"	2"
A	Adapter x FPT	50013		
	Box Quantity	25		
B	Adapter x MPT	50012		
	Box Quantity	25		
C	MPT x FPT	50016	60013	70011
	Box Quantity	25	30	30
D	MPT x MPT	50014	60014	70012
	Box Quantity	25	30	30
E	MPT x Hose Shank	50015	60011	70013
	Box Quantity	25	30	30
F	FPT x Hose Shank		60015	
	Box Quantity		30	
G	MPT x MPT Long-Neck	50017		
	Box Quantity	25		

**NOTE:** Glass-filled nylon also available, contact sales office.  
125 psi max @ 70° F



## Adapters

## FEATURES

- Glass-reinforced polypropylene
- Excellent chemical resistance
- Temperature range 10°F to 180°F

### POLYPROPYLENE EXTENDERS

ITEM	DESCRIPTION	1-1/2"x1-1/4"	2"x1-1/4"	2"x1-1/2"	1-1/4"x2"	1-1/2"x2"	1-1/4"x1-1/2"
A	Extender, British x MPT	40001	40012	40002	40018	40019	40014
A	Extender, FPT x MPT	40003	40013	40004	40015	40016	40017

ITEM	DESCRIPTION	1-1/4"x1-1/4"	1-1/2"x1-1/2"	2"x2"
B	Riser Extender, British x MPT	40005	40006	40007
B	Riser Extender, FPT x MPT	40008	40009	40010

ITEM	DESCRIPTION	3/4"x1-1/4"
C	Garden Hose, Thread MHT x MPT	40011

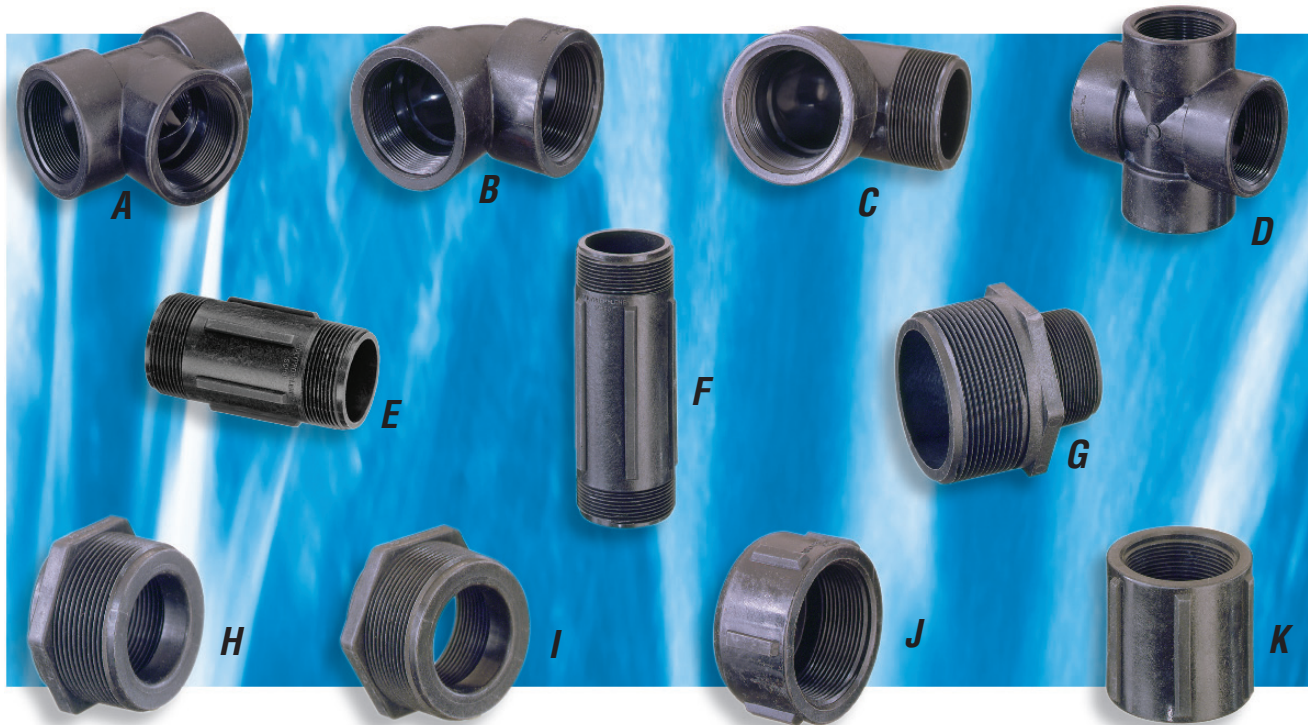
**NOTE:** Extenders and reducers are available in ABS, contact sales office.  
125 psi max @ 70° F



# Schedule 80 Fittings, Polypropylene

## FEATURES

- Schedule 80 design
- Manufactured from glass-reinforced polypropylene for strength and durability
- Chemical resistant to most acids (Refer to chemical resistance tables for specific recommendation)
- Temperature range 10° F to 180° F



### TEES



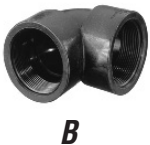
ITEM	DESCRIPTION	PART NUMBER
A	3/8"	70891
A	1/2"	70800
A	3/4"	70801
A	1"	70802
A	1-1/4"	70803
A	1-1/2"	70804
A	2"	70805
A	3"	70806

### 90° STREET ELBOWS



ITEM	DESCRIPTION	PART NUMBER
C	3/8"	70893
C	1/2"	70814
C	3/4"	70815
C	1"	70816
C	1-1/4"	70817
C	1-1/2"	70818
C	2"	70819
C	3"	70820

### 90° PIPE ELBOWS



ITEM	DESCRIPTION	PART NUMBER
B	3/8"	70892
B	1/2"	70807
B	3/4"	70808
B	1"	70809
B	1-1/4"	70810
B	1-1/2"	70811
B	2"	70812
B	3"	70813

### CROSSES



ITEM	DESCRIPTION	PART NUMBER
D	3/4"	70821
D	1"	70822
D	1-1/4"	70823
D	1-1/2"	70824
D	2"	70825

# Schedule 80 Design

## PIPE NIPPLES



E



F

ITEM	DESCRIPTION	PART NUMBER
	3/8" x Short	70894
	1/2" x Short	70826
	1/2" x 3"	70827
	3/4" x Short	70828
E	3/4" x 4"	70829
F	3/4" x 6"	70830
	1" x Short	70831
E	1" x 4"	70832
F	1" x 6"	70833
	1-1/4" x Short	70834
E	1-1/4" x 4"	70835
F	1-1/4" x 6"	70836
	1-1/2" x Short	70837
E	1-1/2" x 4"	70838
F	1-1/2" x 6"	70839
	2" x Short	70840
E	2" x 4"	70841
F	2" x 6"	70842
	3" x Short	70843
F	3" x 6"	70844
	4" x Short	70895

## REDUCER NIPPLES



G



H

ITEM	DESCRIPTION	PART NUMBER
G	1/2" x 3/8"	70896
G	3/4" x 1/2"	70845
G	1" x 1/2"	70897
G	1" x 3/4"	70846
G	1-1/4" x 1"	70847
G	1-1/4" x 3/4"	70898
G	1-1/2" x 1"	70899
G	1-1/2" x 1-1/4"	70848
G	2" x 1-1/2"	70849
G	3" x 2"	70850
G	4" x 3"	72938

## PIPE PLUGS

ITEM	DESCRIPTION	PART NUMBER
H	1/2"	70884
H	3/4"	70885
H	1"	70886
H	1-1/4"	70887
H	1-1/2"	70888
H	2"	70889
H	3"	70890

Operating Pressure  
 120 psi max @ 0° F  
 150 psi max @ 70° F  
 80 psi max @ 150° F

## REDUCER BUSHINGS

ITEM	DESCRIPTION	PART NUMBER
I	3/8" x 1/4"	70900
I	1/2" x 1/4"	70851
I	1/2" x 3/8"	70852
I	3/4" x 1/8"	70853
I	3/4" x 1/4"	70854
I	3/4" x 3/8"	70855
I	3/4" x 1/2"	70856
I	1" x 1/8"	70857
I	1" x 1/4"	70858
I	1" x 1/2"	70859
I	1" x 3/4"	70860
I	1-1/4" x 3/4"	70861
I	1-1/4" x 1"	70862
I	1-1/2" x 3/4"	70863
I	1-1/2" x 1"	70864
I	1-1/2" x 1-1/4"	70865
I	2" x 3/4"	70866
I	2" x 1"	70867
I	2" x 1-1/4"	70868
I	2" x 1-1/2"	70869
I	3" x 1-1/2"	70870
I	3" x 2"	70871



I

## PIPE CAPS

ITEM	DESCRIPTION	PART NUMBER
J	1/2"	70901
J	3/4"	70872
J	1"	70873
J	1-1/4"	70902
J	1-1/2"	70874
J	2"	70875
J	3"	70876



J

## PIPE COUPLINGS

ITEM	DESCRIPTION	PART NUMBER
K	3/8"	70903
K	1/2"	70877
K	3/4"	70878
K	1"	70879
K	1-1/4"	70880
K	1-1/2"	70881
K	2"	70882
K	3"	70883



K

## 45° STREET ELBOWS

ITEM	DESCRIPTION	PART NUMBER
L	3/4"	72907
L	1"	72908
L	1-1/4"	72909
L	1-1/2"	72910
L	2"	72911



L

# TANK ACCESSORIES

## Polypropylene Bolted Tank Fittings

### FEATURES

- Glass-reinforced polypropylene
- EPDM gaskets standard, Viton® available
- Recessed cap bolts
- Stainless steel bolts, washers, nuts

### POLYPROPYLENE BOLTED TANK FITTINGS

DESCRIPTION	1/2"	3/4"	1"	1-1/4"	1-1/2"	2"	2-1/2"
Full Port	050-TF	075-TF	100-TF	125-TF	150-TF	200F-TF	250-TF
Replacement Gaskets							
EPDM	24060-TF	24160-TF	24260-TF	24360-TF	24460-TF	24560FP-TF	24660-TF
Viton	24060V-TF	24160V-TF	24260V-TF	24360V-TF	24460V-TF	24560FPV-TF	24660V-TF
DESCRIPTION	2"	3"					
Standard Port	200-TF	300-TF					
Replacement Gaskets							
EPDM	24560SP-TF	24760-TF					
Viton	24560SPV-TF	24760V-TF					

Size	Operating Pressure
1/2"-1"	125 psi max @ 70° F
1 1/4"-2"	100 psi max @ 70° F
3"	75 psi max @ 70° F

## Stainless Steel Bolted Tank Fittings

### FEATURES

- 316 stainless steel
- Bolts threaded into back plate no welds or bolt holes to leak
- Chemical resistant to most acids
- Uses single gasket (not included)
- EPDM, cross-linked Polyethylene and Viton® gaskets available

### STAINLESS STEEL BOLTED TANK FITTINGS

ITEM	DESCRIPTION	3/4"	1"	1-1/4"	1-1/2"	2"
A	Double threaded fitting (no gasket)	63035	62948	63036	63037	63038
ITEM	DESCRIPTION	3"				
B	Double threaded fitting (no gasket)	63039				

**NOTE:** Gaskets must be ordered separately. See page 29 for materials and part numbers.

# Bulkhead Fittings and Tank Accessories

## FEATURES

- Strong, glass-reinforced polypropylene
- Double threaded
- EPDM gaskets standard, Viton available



## Bulkhead Fittings

### Double Threaded Bulkhead Fitting

	1/2"	3/4"	1"	1-1/4"	1-1/2"	2"	3"
Std bulkhead fitting w/nut and two (2) EPDM gaskets	62834	60401	60427	60403	60124	60405	62299
Optional Viton gaskets	60360	60360	60361	60361	60523	60523	60351
See page 29 for replacement gaskets							
Recommended hole size	1-7/16"	1-5/8"	2-1/4"	2-1/4"	3"	3"	4-1/2"



### 2" Bulkhead w/Shiphon Tube Kit

2" Heavy-duty bulkhead fitting w/nut and short siphon tube  
EPDM gaskets standard  
Part. No. 60337



### 3" Bulkhead w/Shiphon Tube Kit

3" Bulkhead fitting w/nut, 2" reducer and short siphon tube  
EPDM gaskets standard  
Part. No. 60339

## Accessories

### 12" siphon Tube



1-1/2" MPT -- Part No. ST63279  
2" MPT -- Part No. ST 63262  
3" MPT -- Part No. ST63263

### 2" MPT Vent Cap Antivortex w/o screen



Part No. VC200

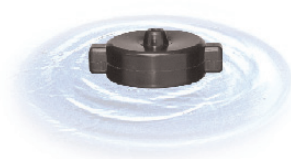
### 2" MPT Vent Cap Antivortex w/poly screen



Part No. VC220

## Caps/Lids

### Pipe Cap, FPT, Polypropylene



2" FPT -- Part No. 200PC-M | 200PL-G  
3" FPT -- Part No. 300PC-M | 300PL-G  
4" FPT -- Part No. 400PC-M | 400PL-G

### Gasket

### 2-1/2" Water Tank Cap w/3-way 3/4" FPT



Part No. MP W100  
Use with O-ring 4H056

### 5" Tank Lid w/2" FPT, Polypropylene



Part No. TL63264  
See page 30 for gasket

# HOSE CLAMPS

## T-Bolt Clamps



### FEATURES

- Manufactured from 304 stainless steel
- Strong, reliable positive connections
- Ideal for high torque applications
- 360 deg. Sealing surface
- Stainless steel bolt with silver plated nut to prevent seizing
- Nylon lock-nut feature

### T-BOLT CLAMPS

SIZE	DESCRIPTION	PART NO.
1.625" - 1.812"	UTBC162, UPC Code 55106-2	43082000
1.75" - 1.937"	UTBC181, UPC Code 55107-9	43082002
1.875" - 2.062"	UTBC193, UPC Code 55109-3	43082004
2.25" - 2.737"	UTBC218, UPC Code 55110-9	43082008
2.343" - 2.625"	UTBC231, UPC Code 55111-6	43082012
2.531" - 2.812"	UTBC250, UPC Code 55112-3	43082016
2.906" - 3.187"	UTBC287, UPC Code 55113-0	43082020
3.281" - 3.562"	UTBC331, UPC Code 55116-1	43082024
3.531" - 3.812"	UTBC343, UPC Code 55117-8	43082026
4.281" - 4.562"	UTBC425, UPC Code 55118-5	43082030
4.531" - 4.812"	UTBC456, UPC Code 55119-2	43082032

## Flange Clamp for use with Manifold System



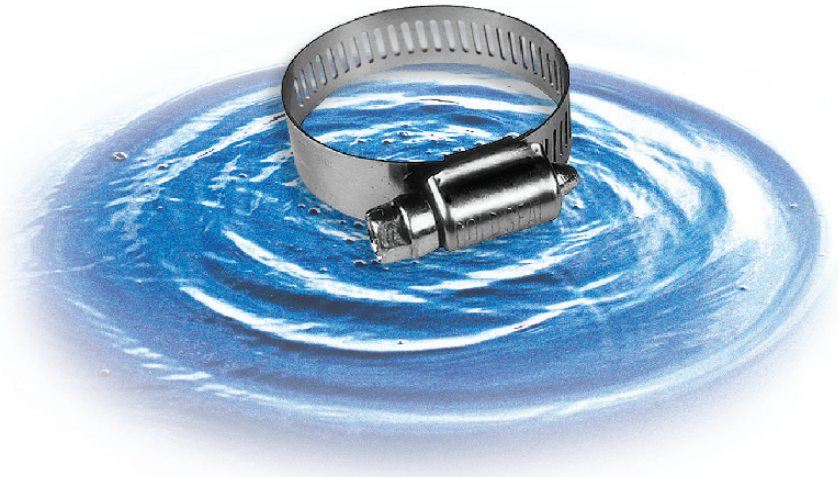
### WORM GEAR FLANGE FITTING CLAMPS

SIZE	PART NO.
1"	62932
2"	62933
3"	62934

# Worm Gear Clamps

## FEATURES

- SAE type "F" clamp
- 201 stainless steel band and housing
- Screws available in 410 stainless steel or Zinc plated carbon steel
- Suitable for most applications



## WORM GEAR CLAMPS

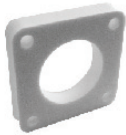
SIZE	SCREW MATERIAL	PART NO.	SIZE	SCREW MATERIAL	PART NO.
0.25" - 0.63"	410 SS	MM4 SS	2.06" - 3.00"	410 SS	H40 SS
0.25" - 0.63"	Zinc-Plated CS	MM4	2.06" - 3.00"	Zinc-Plated CS	H40
0.31" - 0.91"	410 SS	MM5 SS	2.31" - 3.25"	410 SS	H44 SS
0.31" - 0.91"	Zinc-Plated CS	MM5	2.31" - 3.25"	Zinc-Plated CS	H44
0.44" - 0.78"	410 SS	H6 SS	2.56" - 3.50"	410 SS	H48 SS
0.44" - 0.78"	Zinc-Plated CS	H6	2.56" - 3.50"	Zinc-Plated CS	H48
0.44" - 0.91"	410 SS	H8 SS	2.81" - 3.75"	410 SS	H52 SS
0.44" - 0.91"	Zinc-Plated CS	H8	2.81" - 3.75"	Zinc-Plated CS	H52
0.50" - 1.06"	410 SS	MM10 SS	3.06" - 4.00"	410 SS	H56 SS
0.50" - 1.06"	Zinc-Plated CS	MM10	3.06" - 4.00"	Zinc-Plated CS	H56
0.56" - 1.06"	410 SS	H10 SS	3.31" - 4.25"	410 SS	H60 SS
0.56" - 1.06"	Zinc-Plated CS	H10	3.31" - 4.25"	Zinc-Plated CS	H60
0.69" - 1.25"	410 SS	H12 SS	3.56" - 4.50"	410 SS	H64 SS
0.69" - 1.25"	Zinc-Plated CS	H12	3.56" - 4.50"	Zinc-Plated CS	H64
0.75" - 1.50"	410 SS	H16 SS	4.06" - 5.00"	410 SS	H72 SS
0.75" - 1.50"	Zinc-Plated CS	H16	4.06" - 5.00"	Zinc-Plated CS	H72
0.81" - 1.75"	410 SS	H20 SS	4.56" - 5.50"	410 SS	H80 SS
0.81" - 1.75"	Zinc-Plated CS	H20	4.56" - 5.50"	Zinc-Plated CS	H80
1.06" - 2.00"	410 SS	H24 SS	5.06" - 6.00"	410 SS	H88 SS
1.06" - 2.00"	Zinc-Plated CS	H24	5.06" - 6.00"	Zinc-Plated CS	H88
1.31" - 2.25"	410 SS	H28 SS	5.56" - 6.50"	410 SS	H96 SS
1.31" - 2.25"	Zinc-Plated CS	H28	5.56" - 6.50"	Zinc-Plated CS	H96
1.56" - 2.50"	410 SS	H32 SS	6.06" - 7.00"	410 SS	H104 SS
1.56" - 2.50"	Zinc-Plated CS	H32	6.06" - 7.00"	Zinc-Plated CS	H104
1.81" - 2.75"	410 SS	H36 SS	6.81" - 7.75"	410 SS	H116 SS
1.81" - 2.75"	Zinc-Plated CS	H36	6.81" - 7.75"	Zinc-Plated CS	H116

**Note:** SS—Stainless Steel; CS—Carbon Steel

# GASKETS

## Stainless Steel Bolted Tank Fitting Original and Replacement Gaskets

### BOLTED STAINLESS STEEL TANK FITTING ORIGINAL AND REPLACEMENT GASKETS



SIZE	MATERIAL	PART NO.
3/4"	Cross-Linked Polyethylene	62950
1"	Cross-Linked Polyethylene	62950
1-1/4"	Cross-Linked Polyethylene	63041
1-1/2"	Cross-Linked Polyethylene	63042
2"	Cross-Linked Polyethylene	62848
3"	Cross-Linked Polyethylene	63043



3/4"	EPDM	63205
1"	EPDM	63205
1-1/4"	EPDM	63426
1-1/2"	EPDM	63426
2"	EPDM	63206
3"	EPDM	63223

3/4"	Viton	63224
1"	Viton	63224
1-1/4"	Viton	63225
1-1/2"	Viton	63225
2"	Viton	63225
3"	Viton	63226



## Bolted Standard Port Tank Fitting Replacement Gaskets

### BOLTED STANDARD PORT TANK FITTING REPLACEMENT GASKETS

SIZE	MATERIAL	PART NO.
2"	EPDM	24560SP-TF
3"	EPDM	24760-TF
2"	Viton	24560SPV-TF
3"	Viton	24760V-TF

## Bulkhead Fitting, Replacement Gasket

### BULKHEAD FITTING, REPLACEMENT GASKET

SIZE	MATERIAL	PART NO.
1/2"	EPDM	60402
3/4"	EPDM	60402
1"	EPDM	60404
1-1/4"	EPDM	60404
1-1/2"	EPDM	60406
2"	EPDM	60406
3"	EPDM	60331
1/2"	Viton	60360
3/4"	Viton	60360
1"	Viton	60361
1-1/4"	Viton	60361
1-1/2"	Viton	60523
2"	Viton	60523
3"	Viton	60351



## Bolted Full Port Tank Fitting Replacement Gaskets

### BOLTED FULL PORT TANK FITTING REPLACEMENT GASKETS



SIZE	MATERIAL	PART NO.
1/2"	EPDM	24060-TF
3/4"	EPDM	24160-TF
1"	EPDM	24260-TF
1-1/4"	EPDM	24360-TF
1-1/2"	EPDM	24460-TF
2"	EPDM	24560FP-TF
2-1/2"	EPDM	24660-TF



1/2"	Viton	20460V-TF
3/4"	Viton	24160V-TF
1"	Viton	24260V-TF
1-1/4"	Viton	24360V-TF
1-1/2"	Viton	24460V-TF
2"	Viton	24560FPV-TF
2-1/2"	Viton	24660V-TF

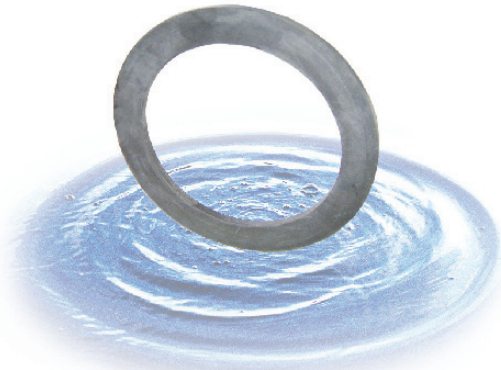
## Fitting Gaskets for Manifold System



### FLANGE FITTING ORIGINAL AND REPLACEMENT GASKETS

SIZE	MATERIAL	PART NO.
1"	EPDM	62935
2"	EPDM	61574
3"	EPDM	61575

## Tank Lid Gasket



### TANK LID ORIGINAL AND REPLACEMENT GASKET

SIZE	MATERIAL	PART NO.
5"	EPDM	60366

## Shims

### FEATURES

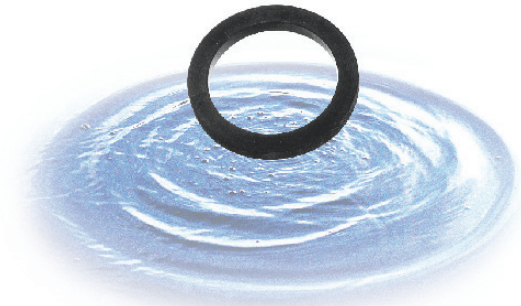
- Polyethylene Material
- Thickness .030"
- Coupler compatible



### SHIMS

3/4"	1"	1-1/2"	2"	3"	4"
075-GS	100-GS	150-GS	200-GS	300-GS	400-GS

## Cam Coupler Replacement Gaskets



### CAM COUPLER REPLACEMENT GASKETS

SIZE	MATERIAL	PART NO.
1/2"	BUNA	24060B
3/4"	BUNA	24160B
1"	BUNA	24260B
1-1/4"	BUNA	24360B
1-1/2"	BUNA	24460B
2"	BUNA	24560B
3"	BUNA	24760B
4"	BUNA	24860B

1/2"	EPDM	24060
3/4"	EPDM	24160
1"	EPDM	24260
1-1/4"	EPDM	24360
1-1/2"	EPDM	24460
2"	EPDM	24560
3"	EPDM	24760
4"	EPDM	24860

1/2"	Nitrile	24060N
3/4"	Nitrile	24160N
1"	Nitrile	24260N
1-1/4"	Nitrile	24360N
1-1/2"	Nitrile	24460N
2"	Nitrile	24560N
3"	Nitrile	24760N
4"	Nitrile	24860N

1/2"	Viton	24060V
3/4"	Viton	24160V
1"	Viton	24260V
1-1/4"	Viton	24360V
1-1/2"	Viton	24460V
2"	Viton	24560V
3"	Viton	24760V
4"	Viton	24860V

# PIPE, HOSE AND NOZZLE FITTINGS

Manufactured from glass-reinforced polypropylene or nylon



## HEX PLUG WITH MALE PIPE THREADS

MPT	Nylon P/N	Poly P/N
1/8	F18	3-F18
1/4	F14	3-F14
3/8	F38	3-F38
1/2	F12	3-F12
3/4	F34	3-F34
1	F100	3-F100
1-1/4	F114	3-F114
1-1/2	F112	3-F112
2	F200	3-F200

## MALE PIPE THREADS TO HOSE BARB (CONTINUED)

MPT	HB	Nylon P/N	Poly P/N
1/4	3/16	A14316	3-A14316
1/4	1/4	A14	3-A14
1/4	5/16	A14516	3-A14516
1/4	3/8	A1438	3-A1438
1/4	1/2	A1412	3-A1412
3/8	1/4	A3814	3-A3814
3/8	5/16	A38516	3-A38516
3/8	3/8	A38	3-A38
3/8	1/2	A3812	3-A3812
3/8	5/8	A3858	3-A3858
1/2	1/4	A1214	3-A1214
1/2	3/8	A1238	3-A1238
1/2	1/2	A12	3-A12
1/2	5/8	A1258	3-A1258
1/2	3/4	A1234	3-A1234
1/2	1	A12100	3-A12100
3/4	1/4	A3414	3-A3414
3/4	3/8	A3438	3-A3438
3/4	1/2	A3412	3-A3412
3/4	5/8	A3458	3-A3458
3/4	3/4	A34	3-A34
3/4	1	A34100	3-A34100
1	1/4	A10014	3-A10014
1	3/8	A10038	3-A10038
1	1/2	A10012	3-A10012
1	5/8	A10058	3-A10058
1	3/4	A10034	3-A10034
1	1	A100	3-A100
1	1-1/4	A100114	3-A100114
1-1/4	3/4	A11434	3-A11434
1-1/4	1	A114100	3-A114100
1-1/4	1-1/4	A114	3-A114
1-1/4	1-1/2	A114112	3-A114112
1-1/2	1-1/4	A112114	3-A112114
1-1/2	1-1/2	A112	3-A112
2	2	A200	3-A200



## COUPLING: FEMALE PIPE THREADS

FPT	FPT	Nylon P/N	Poly P/N
1/8	1/8	FC18	3-FC18
1/4	1/8	FC1418	3-FC1418
1/4	1/4	FC14	3-FC14
3/8	1/8	FC3818	3-FC3818
3/8	1/4	FC3814	3-FC3814
3/8	3/8	FC38	3-FC38
1/2	3/8	FC1238	3-FC1238
1/2	1/2	FC12	3-FC12
3/4	3/8	FC3438	3-FC3438
3/4	1/2	FC3412	3-FC3412
3/4	3/4	FC34	3-FC34
1	1	FC100	3-FC100
1-1/4	1-1/4	FC114	3-FC114
1-1/2	1-1/2	FC112	3-FC112
2	2	FC200	3-FC200

## MALE PIPE THREADS TO HOSE BARB

MPT	HB	Nylon P/N	Poly P/N
1/8	3/16	A18316	3-A18316
1/8	1/4	A1814	3-A1814
1/8	5/16	A18516	3-A18516
1/8	3/8	A1838	3-A1838





#### FEMALE PIPE THREAD TO HOSE BARB

FPT	HB	Nylon P/N	Poly P/N
1/8	1/4	A1814F	3-A1814F
1/8	3/8	A1838F	3-A1838F
1/4	1/4	A14F	3-A14F
1/4	3/8	A1438F	3-A1438F
1/4	1/2	A1412F	3-A1412F
1/4	5/8	A1458F	3-A1458F
3/8	1/4	A3814F	3-A3814F
3/8	3/8	A38F	3-A38F
3/8	1/2	A3812F	3-A3812F
3/8	5/8	A3858F	3-A3858F
3/8	3/4	A3834F	3-A3834F
1/2	1/4	A1214F	3-A1214F
1/2	3/8	A1238F	3-A1238F
1/2	1/2	A12F	3-A12F
1/2	5/8	A1258F	3-A1258F
1/2	3/4	A1234F	3-A1234F
3/4	1/4	A3414F	3-A3414F
3/4	3/8	A3438F	3-A3438F
3/4	1/2	A3412F	3-A3412F
3/4	5/8	A3458F	3-A3458F
3/4	3/4	A34F	3-A34F

#### ELBOW: MALE PIPE THREAD TO HOSE BARB

MPT	HB	Nylon P/N	Poly P/N
1/8	1/4	EL1814	3-EL1814
1/8	3/8	EL1838	3-EL1838
1/4	3/16	EL14316	3-EL14316
1/4	1/4	EL14	3-EL14
1/4	5/16	EL14516	3-EL14516
1/4	3/8	EL1438	3-EL1438
1/4	1/2	EL1412	3-EL1412
3/8	1/4	EL3814	3-EL3814
3/8	5/16	EL38516	3-EL38516
3/8	3/8	EL38	3-EL38
3/8	1/2	EL3812	3-EL3812
3/8	5/8	EL3858	3-EL3858
1/2	1/4	EL1214	3-EL1214
1/2	3/8	EL1238	3-EL1238
1/2	1/2	EL12	3-EL12
1/2	5/8	EL1258	3-EL1258
1/2	3/4	EL1234	3-EL1234
3/4	1/4	EL3414	3-EL3414
3/4	3/8	EL3438	3-EL3438
3/4	1/2	EL3412	3-EL3412
3/4	5/8	EL3458	3-EL3458
3/4	3/4	EL34	3-EL34
3/4	1	EL34100	3-EL34100
1	1/2	EL10012	3-EL10012
1	3/4	EL10034	3-EL10034
1	1	EL100	3-EL100
1-1/4	1	EL114100	3-EL114100
1-1/4	1-1/4	EL114	3-EL114
1-1/2	1-1/2	EL112	3-EL112
2	2	EL200	3-EL200



#### FEMALE PIPE THREAD TO "SLIP ON" HOSE BARB

FPT	HB	Nylon P/N	Poly P/N
1/4	1/4	Q14	3-Q14
1/2	1/2	Q12	3-Q12



#### ELBOW ADAPTER: HOSE BARB TO HOSE BARB

HB	HB	Nylon P/N	Poly P/N
1/4	1/4	EL14HB	3-EL14HB
3/8	3/8	EL38HB	3-EL38HB
1/2	1/2	EL12HB	3-EL12HB
5/8	5/8	EL58HB	3-EL58HB
3/4	3/4	EL34HB	3-EL34HB
1	1	EL100HB	3-EL100HB

Pressure rated to 150 psi @ 70°F  
 Temperature Range  
 – Polypropylene (10°F to 180°F)  
 – Nylon (-30°F to 200°F)

**Polyethylene fittings available contact sales office**

# Pipe, Hose and Nozzle Fittings cont.

Manufactured from glass-reinforced polypropylene or nylon



### ELBOW: FEMALE PIPE THREAD TO HOSE BARB

FPT	HB	Nylon P/N	Poly P/N
1/8	3/16	EL18316F	3-EL18316F
1/8	1/4	EL1814F	3-EL1814F
1/8	3/8	EL1838F	3-EL1838F
1/4	3/16	EL14316F	3-EL14316F
1/4	1/4	EL14F	3-EL14F
1/4	3/8	EL1438F	3-EL1438F
3/8	1/4	EL3814F	3-EL3814F
3/8	3/8	EL38F	3-EL38F
3/8	1/2	EL3812F	3-EL3812F
1/2	1/4	EL1214F	3-EL1214F
1/2	3/8	EL1238F	3-EL1238F
1/2	1/2	EL12F	3-EL12F
1/2	5/8	EL1258F	3-EL1258F
3/4	3/8	EL3438F	3-EL3438F
3/4	1/2	EL3412F	3-EL3412F
3/4	5/8	EL3458F	3-EL3458F
3/4	3/4	EL34F	3-EL34F

### TEE: FEMALE PIPE THREAD

FPT	FPT x FPT	Nylon P/N	Poly P/N
1/4	1/4 x 1/4	TT14C*	3-TT14C*
1/4	1/4 x 1/4	TT14	3-TT14



\*center leg sealed

### BARBED TEE TO FEMALE PIPE THREAD

FPT	HB x HB	Nylon P/N	Poly P/N
3/4	3/4 x 3/4	T34F	3-T34F
3/4	1-1/4 x 1-1/4	T34114F	3-T34114F



### TEE: HOSE BARB TO HOSE BARB

HB	HB x HB	Nylon P/N	Poly P/N
1/4	1/4 x 1/4	T14	3-T14
1/4	3/8 x 3/8	T1438	3-T1438
3/8	3/8 x 3/8	T38	3-T38
3/8	1/2 x 1/2	T3812	3-T3812
3/8	5/8 x 5/8	T3858	3-T3858
1/2	3/8 x 3/8	T1238	3-T1238
1/2	1/2 x 1/2	T12	3-T12
5/8	5/8 x 5/8	T58	3-T58
3/4	1/2 x 1/2	T3412	3-T3412
3/4	3/4 x 3/4	T34	3-T34
1	1 x 1	T100	3-T100
1-1/4	1-1/4 x 1-1/4	T114	3-T114
1-1/2	1-1/2 x 1-1/2	T112	3-T112
2	2 x 2	T200	3-T200



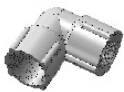
### STREET ELBOW: 90 DEGREES

MPT	FPT	Nylon P/N	Poly P/N
1/8	1/8	SE18	3-SE18
1/4	1/4	SE14	3-SE14
3/8	3/8	SE38	3-SE38
1/2	1/2	SE12	3-SE12
3/4	3/4	SE34	3-SE34
1-1/2	1-1/2	SE112	3-SE112
2	2	SE200	3-SE200



### ELBOW: FEMALE PIPE THREAD TO FEMALE PIPE THREAD

FPT	FPT	Nylon P/N	Poly P/N
1/2	1/2	LL12	3-LL12
3/4	3/4	LL34	3-LL34



### STREET ELBOW: 45 DEGREES

MPT	FPT	Nylon P/N	Poly P/N
3/4	3/4	SE3445	3-SE3445



### BARBED TEE TO MALE STRAIGHT THREAD

MST	HB x HB	Nylon P/N	Poly P/N
11/16	3/8 x 3/8	NTT38	3-NTT38
11/16	1/2 x 1/2	NTT12	3-NTT12
11/16	5/8 x 5/8	NTT58	3-NTT58
11/16	3/4 x 3/4	NTT34	3-NTT34





**TEE: MALE PIPE THREAD TO HOSE BARBS**

MPT	HB x HB	Nylon P/N	Poly P/N
1/8	1/4 x 1/4	T1814T	3-T1814T
1/4	1/4 x 1/4	T14T	3-T14T
1/4	3/8 x 3/8	T1438T	3-T1438T
1/4	1/2 x 1/2	T1412T	3-T1412T
3/8	1/4 x 1/4	T3814T	3-T3814T
3/8	3/8 x 3/8	T38T	3-T38T
3/8	1/2 x 1/2	T3812T	3-T3812T
1/2	3/8 x 3/8	T1238T	3-T1238T
1/2	1/2 x 1/2	T12T	3-T12T
1/2	5/8 x 5/8	T1258T	3-T1258T
1/2	3/4 x 3/4	T1234T	3-T1234T
3/4	3/8 x 3/8	T3438T	3-T3438T
3/4	1/2 x 1/2	T3412T	3-T3412T
3/4	5/8 x 5/8	T3458T	3-T3458T
3/4	3/4 x 3/4	T34T	3-T34T



**NIPPLE: MALE PIPE THREAD TO MALE PIPE THREAD**

MPT	MPT	Nylon P/N	Poly P/N
1/8	1/8	M18	3-M18
1/4	1/8	M1418	3-M1418
1/4	1/4	M14	3-M14
3/8	1/8	M3818	3-M3818
3/8	1/4	M3814	3-M3814
3/8	3/8	M38	3-M38
1/2	1/4	M1214	3-M1214
1/2	3/8	M1238	3-M1238
1/2	1/2	M12	3-M12

Pressure rated to 150 psi @ 70°F  
 Temperature Range  
 – Polypropylene (10°F to 180°F)  
 – Nylon (-30°F to 200°F)

**NIPPLE: MALE PIPE THREAD TO MALE PIPE THREAD (continued)**

MPT	MPT	Nylon P/N	Poly P/N
3/4	3/8	M3438	3-M3438
3/4	1/2	M3412	3-M3412
3/4	3/4	M34	3-M34
1	1	M100	3-M100
1-1/4	1-1/4	M114	3-M114
1-1/2	1-1/2	M112	3-M112
2	2	M200	3-M200

**REDUCER BUSHING**

MPT	FPT	Nylon P/N	Poly P/N
1/4	1/8	RB1418	3-RB1418
3/8	1/8	RB3818	3-RB3818
3/8	1/4	RB3814	3-RB3814
1/2	1/8	RB1218	3-RB1218
1/2	1/4	RB1214	3-RB1214
1/2	3/8	RB1238	3-RB1238
3/4	1/8	RB3418	3-RB3418
3/4	1/4	RB3414	3-RB3414
3/4	3/8	RB3438	3-RB3438
3/4	1/2	RB3412	3-RB3412
1	1/2	RB10012	3-RB10012
1	3/4	RB10034	3-RB10034
1-1/4	3/4	RB11434	3-RB11434
1-1/4	1	RB114100	3-RB114100
1-1/2	3/4	RB11234	3-RB11234
1-1/2	1	RB112100	3-RB112100
1-1/2	1-1/4	RB112114	3-RB112114
2	3/4	RB20034	3-RB20034
2	1	RB200100	3-RB200100
2	1-1/4	RB200114	3-RB200114
2	1-1/2	RB200112	3-RB200112

**Polyethylene fittings available contact sales office**



# Pipe, Hose and Nozzle Fittings cont.

Manufactured from glass-reinforced polypropylene or nylon



### PIPE PLUG, SQUARE HEAD

MPT	Nylon P/N	Poly P/N
3/4	SP34	3-SP34



### ELBOW: MALE STRAIGHT THREAD TO HOSE BARB

MST	HB	Nylon P/N	Poly P/N
11/16	1/4	NTL14	3-NTL14
11/16	3/8	NTL38	3-NTL38
11/16	1/2	NTL12	3-NTL12
11/16	5/8	NTL58	3-NTL58
11/16	3/4	NTL34	3-NTL34



### CROSS HOSE BARBS TO MALE STRAIGHT THREAD

MST	HBxHB	Nylon P/N	Poly P/N
11/16	3/8's	T38C	3-T38C
11/16	1/2's	T12C	3-T12C
11/16	3/4's	T34C	3-T34C



### NIPPLE: MALE STRAIGHT THREAD TO MALE PIPE THREAD

MST	MPT	Nylon P/N	Poly P/N
11/16	1/4	NB1614	3-NB1614
11/16	1/2	NB1612	3-NB1612



### ADAPTER: MALE GARDEN HOSE THREAD TO HOSE BARB

MGHT	HB	Nylon P/N	Poly P/N
3/4	1/4	D3414	3-D3414
3/4	3/8	D3438	3-D3438
3/4	1/2	D3412	3-D3412
3/4	5/8	D3458	3-D3458
3/4	3/4	D34	3-D34

### ADAPTER: MALE GARDEN HOSE THREAD TO MALE PIPE THREAD

MGHT	MPT	Nylon P/N	Poly P/N
3/4	1/4	E3414	3-E3414
3/4	3/8	E3438	3-E3438
3/4	1/2	E3412	3-E3412
3/4	3/4	E34	3-E34
3/4	1	E34100	3-E34100



### ADAPTER: MALE GARDEN HOSE THREAD TO FEMALE PIPE THREAD

MGHT	FPT	Nylon P/N	Poly P/N
3/4	1/4	G3414	3-G3414
3/4	1/2	G3412	3-G3412
3/4	3/4	G34	3-G34



### ADAPTER: FEMALE GARDEN HOSE THREAD TO MALE PIPE THREAD

FGHT	MPT	Nylon P/N	Poly P/N
3/4	3/4	H34	3-H34



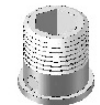
### ADAPTER: FEMALE GARDEN HOSE THREAD TO MALE GARDEN HOSE THREAD

FGHT	MGHT	Nylon P/N	Poly P/N
3/4	3/4	I34	3-I34



### ADAPTER: MALE PIPE THREAD TO FEMALE GARDEN HOSE THREAD SWIVEL

MPT	Nylon P/N	Poly P/N
3/8	C38NPT	3-C38NPT
1/2	C12NPT	3-C12NPT





### COUPLING: FEMALE GARDEN HOSE THREAD TO FEMALE PIPE THREAD

FGHT	FPT	Nylon P/N	Poly P/N
3/4	1/2	J3412	3-J3412
3/4	3/4	J3434	3-J3434

### ELBOW: FEMALE PIPE THREAD TO SHORT HOSE BARB

MPT	HB	Nylon P/N	Poly P/N
3/4	1/2	EL3412SF	3-EL3412SF
3/4	5/8	EL3458SF	3-EL3458SF
3/4	3/4	EL3434SF	3-EL3434SF



### ELBOW MALE GARDEN HOSE THREAD TO HOSE BARB

MGHT	HB	Nylon P/N	Poly P/N
3/4	1/4	ELD3414	3-ELD3414
3/4	3/8	ELD3438	3-ELD3438
3/4	1/2	ELD3412	3-ELD3412
3/4	5/8	ELD3458	3-ELD3458
3/4	3/4	ELD34	3-ELD34
3/4	1	ELD34100	3-ELD34100

### MENDER: HOSE BARB TO HOSE BARB W/STOP

HB	HB	Nylon P/N	Poly P/N
1/4"	1/4"	SHM14	3-SHM14
3/8"	3/8"	SHM38	3-SHM38
1/2"	3/8"	SHM1238	3-SHM1238
1/2"	1/2"	SHM12	3-SHM12
1/2"	5/8"	SHM1258	3-SHM1258
5/8"	3/8"	SHM5838	3-SHM5838
5/8"	5/8"	SHM58	3-SHM58
3/4"	3/4"	SHM34	3-SHM34
1"	1"	SHM100	3-SHM100
1-1/4"	1-1/4"	SHM114	3-SHM114
1-1/2"	1-1/2"	SHM112	3-SHM112
2"	2"	SHM200	3-SHM200



### TEE: MALE GARDEN HOSE THREAD TO HOSE BARB

MGHT	HBxHB	Nylon P/N	Poly P/N
3/4	3/8 x 3/8	TD3438	3-TD3438
3/4	1/2 x 1/2	TD3412	3-TD3412
3/4	5/8 x 5/8	TD3458	3-TD3458
3/4	3/4 x 3/4	TD3434	3-TD3434

### MENDER: HOSE BARB TO HOSE BARB W/O STOP

HB	HB	Nylon P/N	Poly P/N
1/4"	3/16"	HM14316	3-HM14316
1/4"	1/4"	HM14	3-HM14
3/8"	1/4"	HM3814	3-HM3814
3/8"	3/8"	HM38	3-HM38
5/16"	5/16"	HM516	3-HM516
1/2"	1/4"	HM1214	3-HM1214
1/2"	3/8"	HM1238	3-HM1238
1/2"	1/2"	HM12	3-HM12
5/8"	5/16"	HM58516	3-HM58516
5/8"	3/8"	HM5838	3-HM5838
5/8"	1/2"	HM5812	3-HM5812
5/8"	5/8"	HM58	3-HM58



### FLAT SEAT HOSE BARB

HB	Nylon P/N	Poly P/N
1/4	C14	3-C14
3/8	C38	3-C38
1/2	C12	3-C12
5/8	C58	3-C58
3/4	C34	3-C34
1	C100	3-C100

Pressure rated to 150 psi @ 70°F  
 Temperature Range  
 – Polypropylene (10°F to 180°F)  
 – Nylon (-30°F to 200°F)

**Polyethylene fittings available contact sales office**

# Pipe, Hose and Nozzle Fittings cont.

Manufactured from glass-reinforced polypropylene or nylon



### SWIVEL NUT

FST	Outlet	Nylon P/N	Poly P/N
11/16-16UN	1/2	8027	3-8027

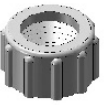
Use with 8400 series



### HEX SWIVEL NUT

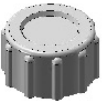
FPS	Outlet	Nylon P/N	Poly P/N
1-11-1/2GH	1-1/16	B100	3-B100

Use with C100 series hose barb



### KNURLED SWIVEL NUT

FGHT	Outlet	Nylon P/N	Poly P/N
3/4-11-1/2	27/32	B34	3-B34
3/4-14	27/32	B35	3-B35



### KNURLED SWIVEL CAP

FST	Outlet	Nylon P/N	Poly P/N
3/4	1/2	B3412	3-3412
3/4	5/8	B3458	3-3458



### KNURLED CAP

FGHT	Nylon P/N	Poly P/N
3/4--11-1/2GH	N34	3-N34
3/4--14FPS	N35	3-N35



### WASHER

OD	ID	Material	P/N
1	11/16	Vinyl	W406V

Pressure rated to 150 psi @ 70°F  
 Temperature Range  
 – Polypropylene (10°F to 180°F)  
 – Nylon (-30°F to 200°F)

### ELBOW REDUCER: HOSE BARB TO HOSE BARB

HB	HB	Nylon P/N	Poly P/N
1/4	3/8	EL3814HB	3-EL3814HB
1/4	1/2	EL1214HB	3-EL1214HB
1/2	3/8	EL1238HB	3-EL1238HB
3/4	5/8	EL3458HB	3-EL3458HB



### MALE STRAIGHT THREAD TO HOSE BARB

MST	HB	Nylon P/N	Poly P/N
11/16-16UN	3/8	38D	3-38D
11/16-16UN	1/2	3812D	3-3812D



### BARBED NOZZLE FITTING

HB	Nylon P/N	Poly P/N
1/4	K8414	3-K8414
3/8	K8438	3-K8438
1/2	K8412	3-K8412



Use with 8027 series swivel nut

### COUPLING: FEMALE PIPE THREAD TO FEMALE STRAIGHT THREAD

FST	FPT	Nylon P/N	Poly P/N
11/16-16UN	1/4	NF1614	3-NF1614



### NOZZLE NUT

FST	Nylon P/N	Poly P/N
11/16-16UN	B12	3-B12



### Filter Screen

OD	ID	Material	P/N
1	5/8	30/30 SS	W160M



### Thread Code

<b>FST</b> – Female Straight	<b>MST</b> – Male Straight
<b>FPS</b> – Female Pipe Straight	<b>UN</b> – Unified National
<b>MGHT</b> – Male Garden Hose	<b>NPT</b> – National Pipe Tapered
<b>FGHT</b> – Female Garden Hose	<b>FPT</b> – Female Pipe Tapered
<b>HB</b> – Hose Barb	

Polyethylene fittings available contact sales office

# Push-In Tube Fittings

## FEATURES

- FDA / NSF compliant
- Quick and easy to use and re-use
- Resists inorganic chemicals, oils, fats, and synthetic detergents

## USE WITH (TUBE)

- Polyethylene
- Polyurethane
- Polypropylene
- Nylon

## MATERIALS

- Fitting—Acetal copolymer (grey)
- O-ring—Nitrile rubber

## APPLICATIONS

- Water conditioning
- Dispensing equipment
- Agricultural
- Industrial & vacuum systems

### ADAPTER, FEMALE NPTF THREAD



Tube, OD	Thread, FPT	Mfg. Part No.
1/4"	1/8"	AFA0402
1/4"	1/4"	AFA0404
3/8"	1/4"	AFA0604

### CONNECTOR, MALE NPTF THREAD



Tube, OD	Thread, FPT	Mfg. Part No.
1/4"	1/8"	AMC0402
1/4"	1/4"	AMC0404
1/4"	3/8"	AMC0406
3/8"	1/8"	AMC0602
3/8"	1/4"	AMC0604
3/8"	3/8"	AMC0606
3/8"	1/2"	AMC0607
1/2"	3/8"	AMC0706
1/2"	1/2"	AMC0707

### CONNECTOR, STRAIGHT



Stem	Barb	Mfg. Part No.
1/4"	1/4"	ATBC0404
3/8"	3/8"	ATBC0606
1/2"	1/2"	ATBC0707

### ELBOW, MALE NPTF THREAD



Tube, OD	Thread, FPT	Mfg. Part No.
1/4"	1/8"	AME0402
1/4"	1/4"	AME0404
1/4"	3/8"	AME0406
3/8"	1/4"	AME0604
3/8"	3/8"	AME0606
1/2"	3/8"	AME0706
1/2"	1/2"	AME0707

### ELBOW, MALE SWIVEL NPTF THREAD



Tube, OD	Thread, FPT	Mfg. Part No.
1/4"	1/8"	AMES0402
1/4"	1/4"	AMES0404
3/8"	1/4"	AMES0604
3/8"	3/8"	AMES0606
1/2"	3/8"	AMES0706
1/2"	1/2"	AMES0707

### ELBOW, UNION



Tube, OD	Tube, OD	Mfg. Part No.
1/4"	1/4"	AEU0404
3/8"	1/4"	AEU0604
3/8"	3/8"	AEU0606
1/2"	3/8"	AEU0706
1/2"	1/2"	AEU0707

### UNION CONNECTOR



Tube, OD	Tube, OD	Mfg. Part No.
1/4"	1/4"	AUC0404
3/8"	1/4"	AUC0604
3/8"	3/8"	AUC0606
1/2"	3/8"	AUC0706
1/2"	1/2"	AUC0707

### UNION TEE



Tube OD Run	Tube OD Branch	Mfg. Part No.
1/4"	1/4"	ATU040404
3/8"	1/4"	ATU060604
3/8"	3/8"	ATU060606
1/2"	3/8"	ATU070706
1/2"	1/2"	ATU070707

Pressure maximum 170 psi @ 72°F  
Temperature range -20°F to 185°F

Additional sizes and configurations, as well as material, including polypropylene, are available contact sales office for more information.

# QUICK COUPLING CONNECTORS



**40AC Series** 40AC Series connectors offer 1/4" flow capacity and are manufactured in a high performance natural white, **acetal** material. Connector materials are resistant to most chemicals and are included on FDA & NSF GRAS lists. Temperature range -40°F to 180°F. Maximum pressure 120 psi.

**40CB Series** 40CB Series connectors offer 1/4" flow capacity and are manufactured from **chrome plated brass**. 40CB Series connectors are available with internal shut-off valves or straight through configurations. 40CB connectors are very durable and offer high performance ratings. Temperature range -40°F to 120°F. Maximum pressure 250 psi.

*40AC and 40CB couplings interconnect with each other and are compatible with other 1/4" flow, metal latch and spring connectors.*

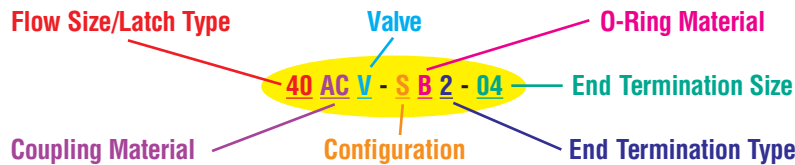
**50AC Series** 50AC Series connectors offer 1/4" flow capacity and feature an easy to use plastic thumb latch. These connectors are manufactured in a high performance natural white, **acetal** material. They are available with or without internal shut-off valves. The connector materials are resistant to most chemicals and are included on FDA & NSF GRAS lists. 50AC and 50GP couplings interconnect with each other and are compatible with other 1/4" flow, plastic latch-type connectors. Temperature range -40°F to 180°F. Maximum pressure 120 psi.

**50GP Series** 50GP Series connectors offer 1/4" flow capacity, are manufactured from a high performance glass-filled, pure white **polypropylene**, and are designed for applications that require extra durability. Connector materials are included on FDA & NSF GRAS lists and incorporates excellent chemical resistance properties. Temperature range 32°F to 180°F. Maximum pressure 120 psi.

*50AC and 50GP couplings interconnect with each other and are compatible with other 1/4" flow, plastic latch and spring connectors.*

**65GP Series** 65GP Series connectors offer 1/2" flow capacity and are manufactured from a high performance glass-filled, pure white **polypropylene**, which is included on FDA & NSF GRAS lists. 65GP connectors have a full flow, non-valved, smooth internal bore that allows for maximum flow with minimal turbulence. 65GP connectors are extremely durable and are well suited for applications that require chemical resistance. Temperature range 32°F to 180°F. Maximum pressure 120 psi.

*65GP Series connectors are compatible with other 1/2" flow, plastic latch and spring connectors.*



## PART NUMBER GUIDE

Flow Size/ Latch Type	Coupling Material	Valve	Configuration	O-Ring Material	End Termination Type	End Termination Size
40 = 1/4 flow	AC = Acetal	V = Valved	S = Socket	B = Buna-N	1 = Male Thread MNPT	04 = 1/4
50 = 1/4 flow (plastic latch)	CB = Chrome/Brass	Default is non-valved	P = Plug	V = Viton	2 = In-line Hose Barb	06 = 3/8
65 = 1/2 flow (plastic latch)	GP = Glass Filled Polypropylene				4 = Elbow Hose Barb	08 = 1/2
					5 = Single Hose Barb	
					7 = Single HB Elbow	
					9 = In-line Poly Tube Fitting	
					10 = Elbow Poly Tube Fitting	

## MALE THREAD SOCKET

FLOW CAPACITY	DESCRIPTION	MATERIAL	CONNECTION SIZE	PART NO.
1/4" Flow	Non-Valved	Acetal	1/4" MNPT	40AC-S1-04
1/4" Flow	Non-Valved	Acetal	3/8" MNPT	40AC-S1-06
1/4" Flow	Valved	Acetal	1/4" MNPT	40ACV-SB1-04
1/4" Flow	Valved	Acetal	3/8" MNPT	40ACV-SB1-06
<hr/>				
1/4" Flow	Non-Valved	Acetal	1/4" MNPT	50AC-S1-04
1/4" Flow	Valved	Acetal	1/4" MNPT	50ACV-SB1-04
<hr/>				
1/4" Flow	Non-Valved	Glass-Filled Polypropylene	1/4" MNPT	50GP-S1-04



## IN-LINE SOCKET

FLOW CAPACITY	DESCRIPTION	MATERIAL	CONNECTION SIZE	PART NO.
1/4" Flow	Non-Valved	Acetal	1/4" PTF	40AC-S9-04
1/4" Flow	Non-Valved	Acetal	1/4" HB	40AC-S2-04
1/4" Flow	Non-Valved	Acetal	5/16" HB	40AC-S2-05
1/4" Flow	Non-Valved	Acetal	3/8" HB	40AC-S2-06
1/4" Flow	Valved	Acetal	1/4" PTF	40ACV-SB9-04
1/4" Flow	Valved	Acetal	1/4" HB	40ACV-SB2-04
1/4" Flow	Valved	Acetal	5/16" HB	40ACV-SB2-05
1/4" Flow	Valved	Acetal	3/8" HB	40ACV-SB2-06
<hr/>				
1/4" Flow	Non-Valved	Chrome Plated Brass	1/4" HB	40CB-S2-04
1/4" Flow	Non-Valved	Chrome Plated Brass	5/16" HB	40CB-S2-05
1/4" Flow	Non-Valved	Chrome Plated Brass	3/8" HB	40CB-S2-06
1/4" Flow	Valved	Chrome Plated Brass	1/4" HB	40CBV-SB2-04
1/4" Flow	Valved	Chrome Plated Brass	5/16" HB	40CBV-SB2-05
1/4" Flow	Valved	Chrome Plated Brass	3/8" HB	40CBV-SB2-06
<hr/>				
1/4" Flow	Non-Valved	Acetal	1/4" PTF	50AC-S9-04-LB
1/4" Flow	Non-Valved	Acetal	1/4" HB	50AC-S2-04
1/4" Flow	Non-Valved	Acetal	3/8" HB	50AC-S2-06
1/4" Flow	Valved	Acetal	1/4" PTF	50ACV-SB9-04
1/4" Flow	Valved	Acetal	1/4" HB	50ACV-SB2-04
1/4" Flow	Valved	Acetal	5/16" HB	50ACV-SB2-05
1/4" Flow	Valved	Acetal	3/8" HB	50ACV-SB2-06
<hr/>				
1/4" Flow	Non-Valved	Glass-Filled Polypropylene	1/4" HB	50GP-S5-04
1/4" Flow	Non-Valved	Glass-Filled Polypropylene	3/8" HB	50GP-S5-06
1/4" Flow	Valved	Glass-Filled Polypropylene	3/8" HB	50GPV-SE5-06
<hr/>				
1/2" Flow	Non-Valved	Glass-Filled Polypropylene	3/4" HB	65GP-S2-12



40AC & 40CB Series
  50AC & 50GP Series
  65GP Series

# Quick Coupling Connectors cont.



## ELBOW SOCKET

FLOW CAPACITY	DESCRIPTION	MATERIAL	CONNECTION SIZE	PART NO.
1/4" Flow	Non-Valved	Glass-Filled Polypropylene	3/8" HB	50GP-S7-06

## MALE THREAD PLUG



FLOW CAPACITY	DESCRIPTION	MATERIAL	CONNECTION SIZE	PART NO.
1/4" Flow	Non-Valved	Acetal	1/4" MNPT	40AC-PB1-04
1/4" Flow	Non-Valved	Acetal	3/8" MNPT	40AC-PB1-06
1/4" Flow	Valved	Acetal	1/4" MNPT	40ACV-PB1-04
1/4" Flow	Valved	Acetal	3/8" MNPT	40ACV-PB1-06



1/4" Flow	Non-Valved	Acetal	1/4" MNPT	50AC-PB1-04
1/4" Flow	Non-Valved	Acetal	3/8" NPT	50AC-PB1-06
1/4" Flow	Valved	Acetal	1/4" MNPT	50ACV-PB1-04
1/4" Flow	Valved	Acetal	3/8" MNPT	50ACV-PB1-06

1/4" Flow	Non-Valved	Glass-Filled Polypropylene	1/4" MNPT	50GP-PE1-04
-----------	------------	----------------------------	-----------	-------------

1/2" Flow	Non-Valved	Glass-Filled Polypropylene	1/2" MNPT	65GP-PE1-08
-----------	------------	----------------------------	-----------	-------------

## IN-LINE PLUG



FLOW CAPACITY	DESCRIPTION	MATERIAL	CONNECTION SIZE	PART NO.
1/4" Flow	Non-Valved	Acetal	1/4" PTF	40AC-PB9-04
1/4" Flow	Non-Valved	Acetal	1/4" HB	40AC-PB2-04
1/4" Flow	Non-Valved	Acetal	5/16" HB	40AC-PB2-05
1/4" Flow	Non-Valved	Acetal	3/8" HB	40AC-PB2-06
1/4" Flow	Valved	Acetal	1/4" PTF	40ACV-PB9-04
1/4" Flow	Valved	Acetal	1/4" HB	40ACV-PB2-04
1/4" Flow	Valved	Acetal	5/16" HB	40ACV-PB2-05
1/4" Flow	Valved	Acetal	3/8" HB	40ACV-PB2-06

40AC & 40CB Series
  50AC & 50GP Series
  65GP Series

## IN-LINE PLUG CONTINUED

FLOW CAPACITY	DESCRIPTION	MATERIAL	CONNECTION SIZE	PART NO.
1/4" Flow	Non-Valved	Chrome Plated Brass	1/4" HB	40CB-PB2-04
1/4" Flow	Non-Valved	Chrome Plated Brass	5/16" HB	40CB-PB2-05
1/4" Flow	Non-Valved	Chrome Plated Brass	3/8" HB	40CB-PB2-06
1/4" Flow	Valved	Chrome Plated Brass	1/4" HB	40CBV-PB2-04
1/4" Flow	Valved	Chrome Plated Brass	5/16" HB	40CBV-PB2-05
1/4" Flow	Valved	Chrome Plated Brass	3/8" HB	40CBV-PB2-06



1/4" Flow	Non-Valved	Acetal	1/4" PTF	50AC-PB9-04
1/4" Flow	Non-Valved	Acetal	1/4" HB	50AC-PB2-04
1/4" Flow	Non-Valved	Acetal	3/8" HB	50AC-PB2-06
1/4" Flow	Valved	Acetal	1/4" PTF	50ACV-PB9-04
1/4" Flow	Valved	Acetal	1/4" HB	50ACV-PB2-04
1/4" Flow	Valved	Acetal	5/16" HB	50ACV-PB2-05
1/4" Flow	Valved	Acetal	3/8" HB	50ACV-PB2-06



1/4" Flow	Non-Valved	Glass-Filled Polypropylene	1/4" HB	50GP-PE5-04
1/4" Flow	Non-Valved	Glass-Filled Polypropylene	3/8" HB	50GP-PE5-06

1/2" Flow	Non-Valved	Glass-Filled Polypropylene	3/4" HB	65GP-PE2-08
-----------	------------	----------------------------	---------	-------------

## ELBOW PLUG

FLOW CAPACITY	DESCRIPTION	MATERIAL	CONNECTION SIZE	PART NO.
1/4" Flow	Non-Valved	Acetal	1/4" HB	40AC-PB4-04
1/4" Flow	Non-Valved	Acetal	3/8" HB	40AC-PB4-06
1/4" Flow	Valved	Acetal	1/4" HB	40ACV-PB4-04
1/4" Flow	Valved	Acetal	3/8" HB	40ACV-PB4-06



1/4" Flow	Non-Valved	Acetal	1/4" HB	50AC-PB4-04
1/4" Flow	Non-Valved	Acetal	3/8" HB	50AC-PB4-06
1/4" Flow	Non-Valved	Acetal	3/8" PTF	50AC-PB10-06
1/4" Flow	Valved	Acetal	3/8" HB	50ACV-PB4-06
1/4" Flow	Valved	Acetal	3/8" HB	50ACV-PB4-06
1/4" Flow	Valved	Acetal	3/8" PTF	50ACV-PB10-06



1/4" Flow	Non-Valved	Glass-Filled Polypropylene	3/8" HB	50GP-PE7-06
-----------	------------	----------------------------	---------	-------------

40AC & 40CB Series
  50AC & 50GP Series
  65GP Series

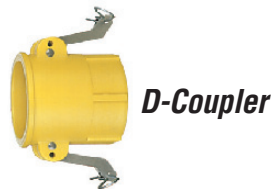
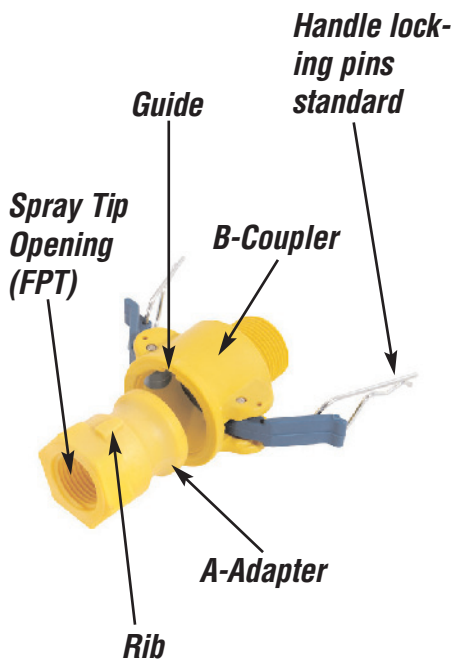


# SPRAYER COMPONENTS

## Guide Lock

### FEATURES

- Guide-rib system provides simple nozzle angle repeatability
- Available in single and double self-aligning ribs
- Glass-reinforced Nylon, extra tough
- Fast, easy to use method for spray nozzle changes
- Strong long lasting threads--no cross-threading
- Coupler available in two sizes (3/4", 1") for typical spray boom mounting
- Male adapter available in four sizes (1/4", 3/8", 1/2", 3/4") fitting all spray nozzles
- Nylon and stainless steel handles available with locking pins
- EPDM gaskets standard on couplers
- Chemical resistant



### DOUBLE RIB GUIDE LOCK

STYLE	MALE ADAPTER	SPRAY NOZZLE THREADED OPENING (FPT)	PART NO.
A	3/4"	1/4"	075A025-2GL-N
A	3/4"	3/8"	075A037-2GL-N
A	3/4"	1/2"	075A050-2GL-N
A	3/4"	3/4"	075A-2GL-N
A	1"	1/4"	100A025-2GL-N
A	1"	3/8"	100A037-2GL-N
A	1"	1/2"	100A050-2GL-N
A	1"	3/4"	100A075-2GL-N
A	1"	1"	100A-2GL-N

STYLE	FEMALE COUPLER	FEMALE THREAD	PART NO.
B	3/4"	3/4"	075B-2GL-N
B	1"	1"	100B-2GL-N

### SINGLE RIB GUIDE LOCK

STYLE	MALE ADAPTER	SPRAY NOZZLE THREADED OPENING (FPT)	PART NO.
A	3/4"	1/4"	075A025-GL-N
A	3/4"	3/8"	075A037-GL-N
A	3/4"	1/2"	075A050-GL-N
A	3/4"	3/4"	075A-GL-N
A	1"	1/4"	100A025-GL-N
A	1"	3/4"	100A075-GL-N
A	1"	1"	100A-GL-N

STYLE	MALE ADAPTER	MALE THREAD	PART NO.
F	3/4"	3/4"	075F-GL-N

(Suitable for accessory mounting to spray boom.)

STYLE	FEMALE COUPLER	MALE THREAD	PART NO.
B	3/4"	3/4"	075B-GL-N
B	1"	1"	100B-GL-N

STYLE	FEMALE COUPLER	FEMALE THREAD	PART NO.
D	3/4"	3/4"	075D-GL-N
D	3/4"	1"	075D100-GL-N

FOR OTHER MATERIALS CONTACT SALES OFFICE

## FEATURES

- Single or double nozzle tips available
- For Strip or Dribble nozzle applications
- Barb tip for use with 1/2" ID hose
- Glass-reinforced nylon for abrasion resistance and long life
- Imprinted nozzle size on tip for easy identification
- Compatible with all 3/4" B & D couplers

## SINGLE NOZZLE APPLICATION CHART

Part Number	Nozzle Description	PSI	GPM per Nozzle	Gallons per acre--water based on 20" spacing				
				5 MPH	7.5 MPH	10 MPH	12.5 MPH	15 MPH
075SJN-030	Orifice Dia. 9/64"	10	1.5	89	59	45	36	30
		20	2.0	118	79	59	48	40
		30	2.6	154	103	77	62	51
		40	3.0	178	119	89	71	59
075SJN-040	Orifice Dia. 5/32"	10	2.0	118	79	59	48	40
		20	2.8	166	111	83	67	55
		30	3.5	208	139	104	83	69
		40	4.0	238	158	119	95	79
075SJN-060	Orifice Dia. 3/16"	10	3.0	179	119	89	71	59
		20	4.2	249	166	125	100	83
		30	5.2	309	206	154	124	103
		40	6.0	356	238	178	143	119
075SJN-080	Orifice Dia. 7/32"	10	4.0	238	158	119	95	79
		20	5.6	333	222	166	133	111
		30	6.9	410	273	205	164	136
		40	8.0	475	317	238	190	158
075SJN-120	Orifice Dia. 1/4"	10	6.0	356	238	178	143	119
		20	8.5	505	337	252	202	168
		30	10.4	618	412	309	247	206
		40	12.0	713	475	356	285	238
075SJN-150	Orifice Dia. 19/64"	10	7.5	446	297	223	178	149
		20	10.6	630	420	314	252	210
		30	13.0	772	515	386	309	257
		40	15.0	891	594	446	356	297
075SJN-200	Orifice Dia. 21/64"	10	10.0	594	396	297	238	198
		20	14.1	838	558	419	335	279
		30	17.3	1028	685	514	411	342
		40	20.0	1188	792	594	475	396
075SJN-000	Blank Orifice							



**NOTE:** Mount nozzles pointing downward and slightly toward rear of boom. Pressures of 10 to 30 psi are recommended for narrowest banding.

## DOUBLE NOZZLE APPLICATION CHART

Part Number	Nozzle Description	PSI	GPM per Nozzle	Gallons per acre--water based on 60" spacing				
				5 MPH	7.5 MPH	10 MPH	12.5 MPH	15 MPH
075DJN-015	Orifice Dia. 3/32"	10	1.5	30	20	15	12	10
		20	2.1	42	28	21	17	14
		30	2.6	52	35	26	21	17
075DJN-020	Orifice Dia. 7/64"	10	2.0	40	26	20	16	13
		20	2.8	56	37	28	22	19
		30	3.5	68	45	34	27	23
075DJN-030	Orifice Dia. 9/64"	10	3.0	60	40	30	24	20
		20	4.2	84	56	42	34	28
		30	5.2	102	68	51	41	34
075DJN-040	Orifice Dia. 5/32"	10	4.0	80	53	40	32	27
		20	5.7	112	75	56	45	38
		30	6.9	138	92	69	55	46
075DJN-060	Orifice Dia. 3/16"	10	6.0	118	79	59	47	40
		20	8.5	168	112	84	67	56
		30	10.4	206	137	103	82	69
075DJN-080	Orifice Dia. 13/64"	10	8.0	158	105	79	63	53
		20	11.3	224	149	112	90	75
		30	13.9	274	183	137	110	92
075DJN-100	Orifice Dia. 15/64"	10	10.0	198	132	99	79	66
		20	14.1	280	187	140	112	94
		30	17.3	342	228	171	137	115
075DJN-000	Blank Orifice							



**Note:** Use double tip nozzle to convert a 60" spray boom to a 30" stripping boom for liquid strip application. The above chart is based on water and requires correction for the weight (specific gravity) of the spray product. A 56" boom height will give 30" strip spacing. The largest size that can be used with lower pressure settings helps to eliminate tip plugging.

**NOZZLES CAN BE ORDERED WITH OTHER SIZE ORIFICE - CONTACT SALES OFFICE**

# GAUGES

## Model 20

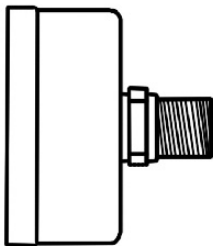


### FEATURES

- Dual scale
- Designed for use with gas, oil, water, or any medium not corrosive to brass or bronze
- Brass connection
- Dry filled
- Steel case, black painted
- Pressure or vacuum available
- Copper alloy wetted parts

### MODEL 20, DUAL SCALE, STEEL CASE—BLACK PAINT

SIZE (FACE)	DESCRIPTION	PART NO.
1.5"	0-30 PSI, 1/8" MNPT Back Mount	0220DSB30
1.5"	0-60 PSI, 1/8" MNPT Back Mount	0220DSB60
1.5"	0-100 PSI, 1/8" MNPT Back Mount	0220DSB100
1.5"	0-160 PSI, 1/8" MNPT Back Mount	0220DSB160
1.5"	0-300 PSI, 1/8" MNPT Back Mount	0220DSB300
2"	0-30 PSI, 1/4" MNPT Back Mount	1220DSB30
2"	0-60 PSI, 1/4" MNPT Back Mount	1220DSB60
2"	0-100 PSI, 1/4" MNPT Back Mount	1220DSB100
2"	0-150 PSI, 1/4" MNPT Back Mount	1220DSB150
2"	0-300 PSI, 1/4" MNPT Back Mount	1220DSB300
2.5"	0-30" VAC, 1/4" MNPT Back Mount	2220DSBVAC
2.5"	0-30" VAC, 1/4" MNPT Bottom Mount	2120DSBVAC

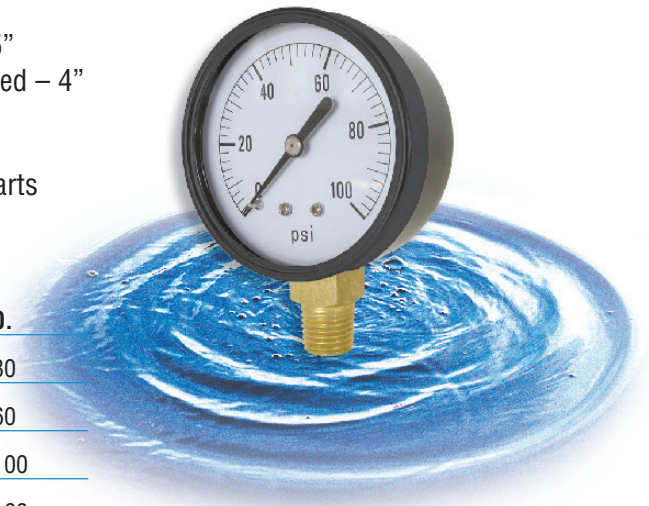


Back Mount

## Model 24

### FEATURES

- Single scale
- Designed for use with gas, oil, water, or any medium not corrosive to brass or bronze
- Brass connection
- ABS case – 2” and 2.5”
- Steel case, black painted – 4”
- Bottom mount
- Dry filled
- Copper alloy wetted parts



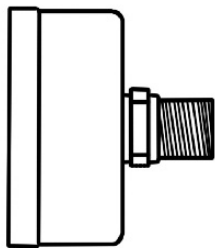
### MODEL 24, SINGLE SCALE

SIZE (FACE)	DESCRIPTION	PART NO.
2"	0-30 PSI, 1/4" MNPT Bottom Mount	1124DAB30
2"	0-60 PSI, 1/4" MNPT Bottom Mount	1124DAB60
2"	0-100 PSI, 1/4" MNPT Bottom Mount	1124DAB100
2"	0-160 PSI, 1/4" MNPT Bottom Mount	1124DAB160
2"	0-200 PSI, 1/4" MNPT Bottom Mount	1124DAB200
2"	0-300 PSI, 1/4" MNPT Bottom Mount	1124DAB300
2.5"	0-30 PSI, 1/4" MNPT Bottom Mount	2124DAB30
2.5"	0-60 PSI, 1/4" MNPT Bottom Mount	2124DAB60
2.5"	0-100 PSI, 1/4" MNPT Bottom Mount	2124DAB100
2.5"	0-160 PSI, 1/4" MNPT Bottom Mount	2124DAB160
2.5"	0-200 PSI, 1/4" MNPT Bottom Mount	2124DAB200
2.5"	0-300 PSI, 1/4" MNPT Bottom Mount	2124DAB300
2.5"	0-600 PSI, 1/4" MNPT Bottom Mount	2124DAB600
2.5"	0-1000 PSI, 1/4" MNPT Bottom Mount	2124DAB1000
4"	0-30 PSI, 1/4" MNPT Bottom Mount	4124DSB30
4"	0-60 PSI, 1/4" MNPT Bottom Mount	4124DSB60
4"	0-100 PSI, 1/4" MNPT Bottom Mount	4124DSB100
4"	0-160 PSI, 1/4" MNPT Bottom Mount	4124DSB160
4"	0-200 PSI, 1/4" MNPT Bottom Mount	4124DSB200
4"	0-300 PSI, 1/4" MNPT Bottom Mount	4124DSB300
4"	0-600 PSI, 1/4" MNPT Bottom Mount	4124DSB600
4"	0-1000 PSI, 1/4" MNPT Bottom Mount	4124DSB1000

# Model 41



Bottom Mount



Back Mount

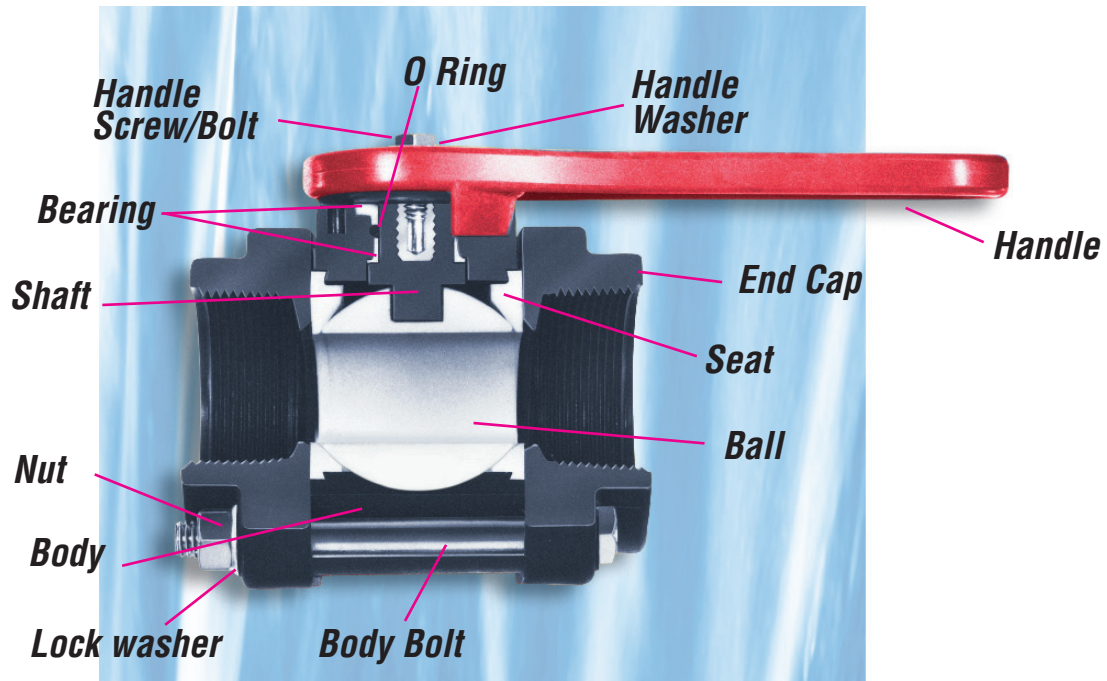
## FEATURES

- Single scale
- Stainless steel case
- Brass connection
- Copper alloy wetted parts
- Bottom or back mount
- Glycerin filled
- Designed for use with gas, oil, water, or any medium not corrosive to brass or bronze
- Liquid-filled gauges are recommended for reducing shock caused by pressure fluctuations or vibration

## MODEL 41, SINGLE SCALE, STAINLESS STEEL CASE

SIZE (FACE)	DESCRIPTION	PART NO.
2.5"	0-15 PSI, 1/4" MNPT Bottom Mount	2141GXB15
2.5"	0-15 PSI, 1/4" MNPT Back Mount	2241GXB15
2.5"	0-30 PSI, 1/4" MNPT Bottom Mount	2141GXB30
2.5"	0-30 PSI, 1/4" MNPT Back Mount	2241GXB30
2.5"	0-60 PSI, 1/4" MNPT Bottom Mount	2141GXB60
2.5"	0-60 PSI, 1/4" MNPT Back Mount	2241GXB60
2.5"	0-100 PSI, 1/4" MNPT Bottom Mount	2141GXB100
2.5"	0-100 PSI, 1/4" MNPT Back Mount	2241GXB100
2.5"	0-160 PSI, 1/4" MNPT Bottom Mount	2141GXB160
2.5"	0-160 PSI, 1/4" MNPT Back Mount	2241GXB160
2.5"	0-200 PSI, 1/4" MNPT Bottom Mount	2141GXB200
2.5"	0-200 PSI, 1/4" MNPT Back Mount	2241GXB200
2.5"	0-300 PSI, 1/4" MNPT Bottom Mount	2141GXB300
2.5"	0-300 PSI, 1/4" MNPT Back Mount	2241GXB300
2.5"	0-400 PSI, 1/4" MNPT Bottom Mount	2141GXB400
2.5"	0-400 PSI, 1/4" MNPT Back Mount	2241GXB400
2.5"	0-600 PSI, 1/4" MNPT Bottom Mount	2141GXB600
2.5"	0-600 PSI, 1/4" MNPT Back Mount	2241GXB600
2.5"	0-1000 PSI, 1/4" MNPT Bottom Mount	2141GXB1000
2.5"	0-1000 PSI, 1/4" MNPT Back Mount	2241GXB1000
2.5"	0-1500 PSI, 1/4" MNPT Bottom Mount	2141GXB1500
2.5"	0-1500 PSI, 1/4" MNPT Back Mount	2241GXB1500
2.5"	0-2000 PSI, 1/4" MNPT Bottom Mount	2141GXB2000
2.5"	0-2000 PSI, 1/4" MNPT Back Mount	2241GXB2000
2.5"	0-3000 PSI, 1/4" MNPT Bottom Mount	2141GXB3000
2.5"	0-3000 PSI, 1/4" MNPT Back Mount	2241GXB3000
2.5"	0-4000 PSI, 1/4" MNPT Bottom Mount	2141GXB4000
2.5"	0-4000 PSI, 1/4" MNPT Back Mount	2241GXB4000
2.5"	0-5000 PSI, 1/4" MNPT Bottom Mount	2141GXB5000
2.5"	0-5000 PSI, 1/4" MNPT Back Mount	2241GXB5000

# BALL VALVE REPLACEMENT PARTS



**BALL VALVE REPLACEMENT PARTS -  
1/2" FP, 3/4" FP 1" FP, 1" SP, 1-1/2" FP & 2" SP  
Size and Part Number**

DESCRIPTION	1/2" FP	3/4" FP	1" SP	1" FP	1-1/4" FP	1-1/2" FP	2" SP
Shaft	4S300-00	4S300-00	4S300-00	4H446-00	4S301-00	4S301-00	4S301-00
Handle	4L100-00	4L100-00	4L100-00	4H722-00	4L101-00	4L101-00	4L101-00
Body	4B200-00	4B200-00	4B200-00	4H384-00	4B201-00	4B201-00	4B201-00
Ball	4B100-00	4B100-00	4B100-00	4H389-00	4B101-00	4B101-00	4B101-00
End Cap	4E100-00	4E101-00	4E102-00	4H372-00	4E122-00	4E103-00	4E104-00
Seat	4S100-20	4S100-20	4S100-20	4H372-00	4S101-20	4S101-20	4S101-20
Upper Bearing	4B300-20	4B300-20	4B300-20	—	—	—	—
Upper Bearing 1-1/2"	—	—	—	—	4H013.20	4H013.20	4H013.20
Lower Bearing	4B300-20	4B300-20	4B300-20	—	4B301-20	4B301-20	4B301-20
O-Ring	4S200-00	4S200-00	4S200-00	—	4H038-00	4H038-00	4H038-00
O-Ring, Shaft	—	—	—	4H446-00	—	—	—
O-Ring, Body	—	—	—	4H379-00	—	—	—
Body Bolt	4H000-00	4H000-00	4H000-00	4H422-00	4H001-00	4H001-00	4H001-00
Lockwasher	—	—	—	4H422-00	—	—	—
Lockwasher 1/4"	4H014-00	4H014-00	4H014-00	—	—	—	—
Lockwasher 3/8"	—	—	—	—	4H017-00	4H017-00	4H017-00
Nut	—	—	4H396-00	4H422-00	—	—	—
Nut 1/4" HEX	4H026-00	4H026-00	4H026-00	—	—	—	—
Nut 3/8"x21/64" HEX	—	—	—	—	4H024-00	4H024-00	4H024-00
Handle Screw	—	—	—	4H347-00	—	—	—
Handle Bolt 8/32"x1/2"	4H030-10	4H030-10	4H030-10	—	—	—	—
Handle Bolt 1/4"x5/8"	—	—	—	—	4H008-00	4H008-00	4H008-00
Handle Washer 1/4"x1"	—	—	—	—	4H016-10F	4H016-10F	4H016-10F

# BALL VALVE REPLACEMENT PARTS CONT.



## BALL VALVE REPLACEMENT PARTS 2" FP, 2-1/2" FP, 3" SP, 3" FP & 4" FP

### Size and Part Number

DESCRIPTION	2" FP	2-1/2" FP	3" SP	3" FP	4" FP
Shaft	4S303-00	4S302-00	4S302-00	4H358-00	4H818-00
Handle	4L102-00	4L102-00	4L102-00	4L102-00	4H838-00
Body	4B203-00	4B202-00	4B202-00	4H387-00	4H823-00
Ball	4B103-00	4B102-00	4B102-00	4H392-00	4H824-00
End Cap	4E112-00	4E123-00	4E105-00	4H443-00	4H820-00
End Cap Flange	—	4E110-00	4E110-00	—	—
Seat	4S103-20	4S102-20	4S102-20	4H443-00	4H821-00
Upper Bearing	4B302-20	4B302-20	4B302-20	—	—
Lower Bearing	4B302-20	4B302-20	4B302-20	—	—
O-Ring, Shaft	4H039-00	4H039-00	4H039-00	4H358-00	4H817-00
O-Ring, End Cap	—	—	—	4H357-00	—
O-Ring, Body	—	—	—	4H382-00	4H822-00
Body Bolt	—	—	—	4H367-00	4H819-00
Body Bolt 3/8"x5" Cad	4H009-00	4H009-00	4H009-00	—	—
Handle Wash. 1-1/2" Cad	4H011-10	4H011-10	4H011-10	4H351-00	4H351-00
Lockwasher	—	—	—	4H367-00	4H819-00
Lockwasher Internal	—	4H019-00	4H019-00	—	—
Lockwasher 3/8" Cad	4H017-00	—	—	—	—
Nut	—	—	—	4H367-00	4H819-00
Nut 3/8"x21/64" Cad	4H024-00	—	—	—	—
Nut 3/8"x7/32" Cad	—	4H027-00	4H027-00	—	—
Handle Bolt	—	—	—	4H349-00	4H349-00
Handle Bolt 3/8"x1/2" Cad	4H029-10	4H029-10	4H029-10	—	—



## POLY NOZZLE BALL VALVE REPLACEMENT PARTS 1-1/2" FP, 2" FP & 2" SP

### Size and Part Number

DESCRIPTION	1-1/2" FP	2" SP	2" FP
Shaft	4S301-00	4S301-00	4S303-00
Handle	4L103-00	4L103-00	4L102-00
Body	4B201-00	4B201-00	4B203-00
Ball	4B101-00	4B101-00	4B103-00
End Cap	—	—	4E112-00
End Cap 1-1/2"	4E103-00	—	—
End Cap 2"	—	4E104-00	—
End Cap Nozzle	4E109-00	4E109-00	4E113-00
Spout 1-1/2"	4S400-00	4S400-00	—
Spout 2"	—	—	4S401-00
Seat	4S101-20	4S101-20	4S103-20
Upper Bearing	—	—	4B302-20
Upper Bearing 1-1/2" Polytef	4H013-20	4H013-20	—
Lower Bearing	4B301-20	4B301-20	4B302-20
O-Ring	4H038-00	4H038-00	4H039-00
Body Bolt 3/8"x4"	4H001-00	4H001-00	—
Body Bolt 3/8"x5"	—	—	4H009-00
Bolt 1/4"x5/8"	4H008-00	4H008-00	—
Washer 1/4"x1" Cad	4H016-10	4H016-10	—
Lockwasher 3/8" Cad"	4H017-00	4H017-00	4H017-00
Nut 3/8"x21/64" Cad"	4H024-00	4H024-00	4H024-00
Nut 3/8"x7/32" Cad"	—	—	—
Handle Bolt 3/8"x1/2" Cad	—	—	4H029-10
Handle Wash. 1-1/2" O.D.	—	—	4H011-10
PIN 3/16"x1/2"	4H035-00	4H035-00	—

## Ball Valve Repair Kit



### Repair Kit Contains:

- 1 Ball
- 2 Seats
- 1 Upper Bearing
- 1 Lower Bearing
- 1 Viton® O-Ring
- Instructions

	1/2" FP	3/4" FP	1" FP	1" SP
REPAIR KIT	4289A-20	4289A-20	4289Y-20	4289A-20
	1-1/4" FP	1-1/2" FP	2" SP	2" FP
REPAIR KIT	4289C-20	4289C-20	4289C-20	4289E-20
	2-1/2" FP	3" SP	3" FP	
REPAIR KIT	4289D-20	4289D-20	4289Z-20	

## Locking Hasp Kits



- Plated hardware
- Heavy duty
- Easy to install
- Locks valve open or close

ITEM	DESCRIPTION	PART NO.	STD. QTY	PKG. WT
A	Fits 1-1/4", 1-1/2" & 2" Standard Port	4020A-00	4	2
B	Fits 2" Full Port	4020B-00	4	2
B	Fits 2-1/2" Full Port & 3" Standard Port	4020C-00	4	2

**Note:** When ordered with valve locking hasp kit will be installed on valves free of charge. Lock not included.



BEE VALVE INC.

# CAM COUPLER REPLACEMENT PARTS

## GASKETS

### Size and Part Number



DESCRIPTION	1/2"	3/4"	1"	1-1/4"	1-1/2"	2"	3"	4"
Gaskets - EPDM Part No.	24060	24160	24260	24360	24460	24560	24760	24860
Gaskets - BUNA Part No.	24060B	24160B	24260B	24360B	24460B	24560B	24760B	24860B
Gaskets - NITRILE Part No.	24060N	24160N	24260N	24360N	24460N	24560N	24760N	24760N
Gaskets - VITON® Part No.	24060V	24160V	24260V	24360V	24460V	24560V	24760V	24860V

Other gasket materials available. Contact factory for assistance.

## COUPLER HANDLES AND LATCHES

### Size and Part Number



DESCRIPTION	Small	Medium	Large
Coupler Handle - Tuf-glass	24030	24230	24730
Coupler Handle - Stainless Steel	24030SS	24230SS	24730SS
Latch - Tuf-glass	—	200LNB	300LNB

\*4" Coupler 3-handle style order P/N 61596

## CAM LEVER PINS AND RINGS

### Size and Part Number



DESCRIPTION	1/2"	3/4"	1"	1-1/4"	1-1/2"	2"	3"	4"
Cam Lever Pin, SS	24050	24050	24250	24450	24450	24550	24750	24750*
Ring	24140	24140	24140	24540	24540	24540	24740	24740

\*Pin for 3-handle coupler order P/N 61589

## Screens

### MESH SIZE

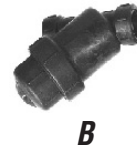
6	12	14	20	40	80
PARTICAL SIZE (opening)					
.132"	.060"	.051"	.034"	.015"	.007"

## Strainer Replacement Parts



### T-LINE STRAINER REPLACEMENT SCREENS

ITEM	DESCRIPTION	1/2" - 1"
A	T-Strainer Screen w/20 Mesh	4S512-20
A	T-Strainer Screen w/40 Mesh	4S512-40
A	T-Strainer Screen w/80 Mesh	4S512-80
A	Gasket (O-Ring)	4G537-00



### LSY SERIES (STANDARD) REPLACEMENT SCREENS

ITEM	DESCRIPTION	1/2" - 3/4"	1" - 1-1/4"	1-1/2" - 2"
B	Screen/20 Mesh	4S509-20	4S510-20	4S511-20
B	Screen/40 Mesh	4S509-40	4S510-40	4S511-40
B	Screen/80 Mesh	4S509-80	4S510-80	4S511-80
B	Gasket (O-Ring)	4G452-00	4G750-00	4G561-00



### REPLACEMENT PARTS

ITEM	DESCRIPTION	Part No.
C	Body-Heavy Duty Line Strainer	4B211-00
C	Small O-Ring	4H055-00
C	End Cap	4E126-00
C	Large O-Ring	4H051-00
C	Reducer Bushing, 1-1/2"x2"	40400-00



### REPLACEMENT SCREENS—5 in.

ITEM	DESCRIPTION	Part No.
C	14 Mesh Screen—5"	4S501
C	20 Mesh Screen—5"	4S505
C	40 Mesh Screen—5"	4S502
C	80 Mesh Screen—5"	4S503
C	100 Mesh Screen—5"	4S504



### REPLACEMENT PARTS

ITEM	DESCRIPTION	Part No.
D	Adapter for 2" A Y-Strainer	300A-Adp
D	Body for 2" A Y-Strainer	4B211-00
D	O-Ring-Cap	4H100-236
D	3" Dust Cap	300-DC



### Y-STRAINER—QUICK CLEAN, HIGH CAPACITY

### REPLACEMENT SCREENS—8 in.

ITEM	DESCRIPTION	Part No.
D	6 Mesh Screen for Strainer—8"	4S508-6
D	14 Mesh Screen for Strainer—8"	4S508-14
D	40 Mesh Screen for Strainer—8"	4S508-40
D	80 Mesh Screen for Strainer—8"	4S508-80



### REPLACEMENT SCREENS—9 1/2 in.

ITEM	DESCRIPTION	Part No.
E	Screen/6 Mesh	4S513-6
E	Screen/12 Mesh	4S513-12
E	Screen/20 Mesh	4S513-20
E	Screen/40 Mesh	4S513-40



### REPLACEMENT SCREENS—13 1/2 in.

ITEM	DESCRIPTION	Part No.
F	Screen - 1/16 Perf	4S514-062
F	Screen - 1/8 Perf	4S514-125



BEE VALVE INC.

# MATERIAL QUICK REFERENCE

## COUPLERS, BALL VALVES, STRAINERS, ADAPTERS AND FITTINGS

---

### **Nylon**

- Good all around/all purpose material, strong.
- Good chemical resistance and excellent mechanical properties.
- Stronger than polypropylene.
- Resists cross threading and most hydrocarbons, solvents, agricultural chemicals and mild acids.
- Temperature range -30°F to 200°F.

### **PVDF**

- Use where ultra high purity is required.
- FDA / NSF compliant.
- Resists most corrosive chemicals, acids, bases, salts, solvents, halogens, chlorinated solvents and is an UL94-VO listing.
- Good choice for high temperature applications.
- Temperature range -20°F to 300°F.
- Can be used in place of Stainless Steel in many applications.

### **Polypropylene**

- Good chemical and corrosion resistance.
- Resists most acids, chemicals and fertilizers.
- Temperature range 10°F up to 180°F.

### **Food-Grade Polypropylene**

- FDA / NSF compliant.
- Cost effective lightweight replacement for stainless steel.
- Temperature range 10°F to 180°F.
- Industry applications include food products, cosmetics, pharmaceutical processing.

## GASKETS

---

### **EPT/EPDM**

- Best choice for most fertilizer and agricultural applications.
- Temperature range -50°F to 250°F.

### **Buna-N**

- General purpose industrial—resistant to oil, hydraulic fluid, petroleum based fluids and water.
- Temperature range -40°F to 250°F.

### **Viton®**

- Superior resistance to most fuels, petroleum based fluids, chemicals and solvents.
- Temperature range -10°F to 350°F.

### **Polyethylene**

- Resists abrasion and tearing.
- Resists many solvents, oils and petroleum based fluids.
- Temperature range -65°F to 190°F.

### **PVC**

- Solvent cementable.
- Permanent installation.
- Resists many chemical solutions.
- Ideal for water transfer.
- Sewage system and pump quick disconnects.
- Temperature range 10°F to 140°F.

### **Santoprene®**

- Special purpose.
- Excellent resistance to weather.
- Good chemical resistance.
- FDA applications—used for protective caps or plugs for stainless steel adapters and couplers.
- Temperature range -80°F to 275°F.

### **Stainless Steel**

- 316 type.
- Excellent chemical and corrosion resistance.
- Use for food service and processing.
- Conductive.

### **Nitrile®**

- Food grade, FDA applications.
- White color.
- Resistant to many oils and chemicals.
- Temperature range -40°F to 220°F.

### **Santoprene®**

- Excellent resistance to weather and many chemicals.
- FDA applications.
- Temperature range -80°F to 275°F.

**Note:** Above information is gathered from various manufacturers published charts and tables.

For Assistance **Phone:** 1-800-634-3078 **Fax:** 440-366-0198  
**E-mail:** Sales@BeeValve.com or TechHelp@BeeValve.com



# BASIC CHEMICAL RESISTANCE TABLE

## COUPLERS, BALL VALVES, STRAINERS, ADAPTERS AND FITTINGS

FLUID	NY-GLASS	POLY-GLASS	PVC	PVDF
Acetic Acid		S		
Acetic Anhydride		S		
Acetone	S	S	U	U
Acetylene-Dry			S	
Air	S	S		
Agricultural Lime	S	S		
Alcohol-Amyl	S	S	S	
Alcohol-Butyl	S	S		
Alcohol-Ethyl	S	S		
Alcohol-Isopropyl	S	S		
Alcohol-Methyl	S	S		
Aluminum Chloride	U	S	S	S
Aluminum Fluoride, 20%	U	S	S	S
Aluminum Nitrate	U	S	S	S
Aluminum Potassium Sulfate	U	S		S
Aluminum Sulfate	U	S		
Ammonia, Anhydrous				
Ammonia, Solutions	S	S		U
Ammonium Chloride-Dry		S	S	
Ammonium Hydroxide	P	S	S	
Ammonium Nitrate		S	S	S
Ammonium Phosphate		S	S	
Mono-basic		S		
Di-Basic or Tri-Basic		S		
Ammonium Sulfate		S	S	S
Aniline		S	U	
Arsenic Acid		S	S	
Asphalt				
Barium Chloride	U	S	S	S
Barium Hydroxide		S	S	U
Barium Sulfide		S	S	
Basic Stag		S		
Beer	S	S	S	
Benzene/Benzol	S			
Benzine	S			
Black Liquor (Paper Ind)		S	S	
Bleach (12.5% Chlorine)	U	S	S	
Borax		S	S	
Boric Acid	P	S	S	S
Brine	S	S	S	
Bromic Acid		S	S	
Burnt Lime	S	S		
Butane	S	S	S	S
Butadiene			S	S
Butyl Acetate-Dry			S	
Butyl Stearate			S	
Butylene			S	
Cadmium Cyanide		S	S	
Calcium Acetate		S		
Calcium Bisulfite		S	S	
Calcium Chloride	U	S	S	S
Calcium Hydroxide		S	S	
Calcium Hypochlorite		S	S	
Calcium Nitrate, 40%		S	S	S
Carbolic Acid (Phenol)	U			
Carbon Dioxide-Dry	S	S	S	S
Carbon Disulfide			U	
Carbon Tetrachloride	S		U	S
Carbonated Beverages	S	S		
Carbonic Acid	S	S	S	
Castor Oil	S	S	S	
Caustic Potash	S	S	S	
Caustic Soda	S	S		
Cellosolves				

FLUID	NY-GLASS	POLY-GLASS	PVC	PVDF
Chlorine-Dry		S	U	S
Chlorobromomethane				
Chloroform-Dry	S	S		S
Chlorex	S			
Chromic Acid, 50%	U	S	U	
Citric Acid	S	S	S	S
Cobalized Super Compound		S		
Copper Chloride-Dry		S	S	S
Copper Sulfate		S	S	S
Copperized Super Compound		S		
Corn Oil	S	S		
Cottonseed Oil	S	S	S	
Creosote				
Cresylic Acid			S	
Cyclohexane	S		U	S
DDT				U
Detergents	S	S	S	
Developer Solution		S		
Dextrose	S	S	S	
Diesel Fuels	S	S	S	S
Diethyl Sebacate			S	
Disodium Phosphate		S	S	
Dowtherm		S		
Ethanolamine		S		
Ether	S		U	S
Ethyl Acetate	S	S	U	
Ethyl Chloride-Dry		U	U	
Ethylene		S		
Ethylene Dichloride-Dry		S	U	
Ethylene Glycol	S	S	S	
Fatty Acids	S	S	S	
Ferric Chloride	P	S	S	
Ferric Hydroxide		S	S	
Ferric Nitrate		S	S	
Ferric Sulfate	P	S	S	
Fluoboric Acid		S	S	
Formaldehyde, 40%		S	S	
Formalin		S		
Formic Acid	U	S	S	S
Freon	S	S		
Fruit Juice: Grapefruit	S	S	S	
Lemon	S	S		
Pineapple	S	S		
Furfural		S	U	
Gas-Coke Oven	S	S	U	
Gasoline-Refined	S	U	U	S
Gasoline-Sour	S	U	U	
Gelatin	S	S		
Glucose	S	S	S	S
Glue	S	S		
Glycerine	S	S	S	S
Glycol	S	S	S	
Green Liquor (Paper Ind)		S	S	
Hexane	S		S	S
Hydrobromic Acid		S		
Hydrobromic Acid, 40%		S		
Hydrobromic Acid, 100%		S		
Hydrochloric Acid	U	S	S	
Hydrogen Chloride		S		
Gas-dry		S		S

# BASIC CHEMICAL RESISTANCE TABLE CONT.

## COUPLERS, BALL VALVES, STRAINERS, ADAPTERS AND FITTINGS

FLUID	NY-GLASS	POLY-GLASS	PVC	PVDF
Hydrogen Gas	S	S		S
Hydrogen Peroxide	U	S		S
Hydrogen Sulfide	U	S		
Hypochlorous Acid, 20%	U	S		
Iodide, Peroxide		S		
Isobutyl Acetate		S		
Isopropyl Acid	S	S		
Jet Fuel	S	U		
Kerosene	S	S		
Kraft Liquor (Paper Ind)		S	S	
Lacquers	S	U		
Lactic Acid, 20%	S	S	S	S
Lactic Acid, 70%		S		S
Lard	S	S	S	S
Lead: Chloride, Sulphate		S	S	
Lime Slurry	S	S		
Lime Sulphur		S		
Linoleic Acid		S	S	
Linseed Oil	S	S	S	S
L.P.G.	S			
Magnesium Carbonate	S	S	S	S
Magnesium Chloride	P	S	S	S
Magnesium Hydroxide	S	S	S	S
Magnesium Nitrate	P	S	S	S
Magnesium Sulfate	P	S	S	S
Meat and Bone Meal	S	S		
Mercuric Chloride		S	S	S
Mercury		S	S	S
Methane	S	S		
Methanol	S	S		
Methyl Amyl Acetate		S		
Methylene Chloride	S	U	U	
Methyl Benzene	S	U		
Methyl Ethyl Ketone	S	S		
Milk	S	S	S	S
Mineral Oil	S	S	S	S
Molasses	S	S	S	
Muriate of Potash	S	S		
Muriatic Acid	U	S	S	
Mustard	S	S		S
Naptha	S		S	S
Nathalene			U	
Napthenic Acid		U		
Natural Gas	S	S	S	
Nickel Chloride		S	S	S
Nickel Sulfate		S		S
Nitric Acid	U	S		S
Nitrobenzene	S	S	U	
Nitro Lime		S		
Octane	S			
Oil-Core	S			
Oil-Fuel	S	S		
Oil-Hydraulic	S	S		
Oil-Petroleum	S			
Crude	S	S	S	
Refined	S	S		
Oil-Transmission	S	S		

FLUID	NY-GLASS	POLY-GLASS	PVC	PVDF
Oil-Vegetable	S	U		
Oleic Acid	S	U	S	
Oleum	U	S	U	
Oxalic Acid	S	S	S	S
Oxygen	S	U	S	S
Palmitic Acid	S	S		
Paraffin	S	S	S	
Pentachlorophenol-Dry				
Perchlorethylene	S	U		
Phosphoric Acid	U	S		S
Photographic Solutions	S	S	S	
Phthalic Anhydride		S		
Picric Acid-Molten	U	S	U	
Aqueous Solution		S		
Plating Solutions, Chrome		S		
Potassium Acetate		S		
Potassium Chloride	S	S	S	S
Potassium Cyanide	S	S	S	
Potassium Dichromate	U	S	S	S
Potassium Fluoride	S	S	S	
Potassium Hydroxide, 30%	S	S	S	
Potassium Nitrate	S	S	S	S
Potassium Sulfate	S	S		S
Propane	S	S	S	
Propionic Acid	S	S		
Propylene Glycol	S	S		
Rosin	S	S		
Salt Water	S	S	S	S
Shellac	S	S		
Silicone Fluid	S	S		
Silicone Oil	S	S		
Silver Nitrate	S	S	S	S
Soap Solutions	S	S	S	
Soda Ash	S	S		
Sodium Bicarbonate	S	S	S	
Sodium Bisulfate		S	S	
Sodium Borate	S	S		
Perborate	S	S		
Sodium Carbonate	S	S	S	S
Sodium Chloride	S	S	S	S
Sodium Cyanide, 10%	S	S	S	S
Sodium Dichromate, 10%		S		
Sodium Hydroxide, 40%	S	S	S	
Sodium Hypochlorite, 20%	U	S	S	
Sodium Metaphosphate	S	S		
Sodium Nitrate	S	S	S	S
Sodium Peroxide		S	S	
Sodium Phosphate-				
Mono-Basic		S		
Di-Basic		S		
Tri-Basic		S		
Sodium Silicate		S		S
Sodium Sulfate	S	S	S	S
Sodium Sulfide		S	S	
Sodium Thiosulfate		S	S	S
Soybean Oil	S	S		
Stannic Chloride	U	S	S	
Stannous Chloride, 15%	U	S		
Steam				
Stearic Acid		S	S	
Stoddard Solvent		S	U	

FLUID	NY-GLASS	POLY-GLASS	PVC	PVDF
Styrene		U		
Sugar Liquors-Cane	S	S		
Beet	S	S		
Sulfate Liquors		S		
Sulphite Liquors		S	S	
Sulfuric Acid	U	S		S
Sulfurous Acid	U	S	S	
Superphosphate		S		
Tannic Acid, 10%		S	S	S
Tar-Wood		S		
Tartaric Acid	S	S	S	S
Titanium Tetrachloride-Dry		S	U	
Toluene/Toluol	S	U	S	
Tetrachlorethylene	S	U		
Trichloroethylene-Dry	S	U		
Triethanolamine		S	S	S
Trisodium Phosphate	S	S	S	
Urea		S	S	S
Urine	S	S	S	
Varnish	S			
Vinegar	S	S	S	
Water-Acid Mine	S	S	S	
Deionized	S	S		
Demineralized	S	S		
Distilled	S	S		
Fresh	S	S		
Salt	S	S		S
White Liquor (Paper Ind)		S	S	
Wine	S	S	S	
Xylene/Xylol	S		U	
Zinc Chloride		S	S	S
Zinc Nitrate, Sulphate	S	S	S	S

**LEGEND:**  
**S - Satisfactory**  
**P - Poor**  
**U - Unsatisfactory**  
**Blank - Not tested**

**For Technical Assistance  
call 800-634-3078**

Bee Valve Inc. products are not intended for use in applications which might subject products to pressures that exceed the maximum recommended temperatures and/or pressures. Further allowance must be made to the recommended ratings based on specific operating conditions. Application and product age must also be considered for suitability and safe use.

Bee Valve Inc. has endeavored to ensure that the information contained in this catalog is accurate and reliable based upon tests believed to be reliable; as well as practical field experience. However, since conditions of use are beyond the control of the manufacturer, it is the customer's/user's responsibility to determine the suitability of Bee Valve Inc. products in any specific application. No warranty is expressed or implied.



## Quick Coupling Connectors

See pages 39 – 42



## PVDF Nipples

See page 21



## Gauges

See pages 45 – 47



## Strainers

See page 11



## Nylon Couplers

See page 13



## Manifold Valve System

See page 7

*Distributed By:*



**BEE VALVE INC.**

## BEE VALVE INC.

1150 Taylor Street, Elyria, OH 44035

Tel: 440.366.0220 Fax: 440.366.0198

800.634.3078 • [www.beevalve.com](http://www.beevalve.com)

For Technical Assistance Call 800.634.3078