

BrakeQuip

BRAKE HOSE MANUFACTURING SYSTEMS

Innovative Solutions For Automotive Plumbing

Fitting & Accessory Catalog



METRIC CONVERSION TABLE

FRACTION (IN.)	DECIMAL (IN.)	METRIC (MM)
1/32	0.031	0.79
1/16	0.063	1.59
3/32	0.094	2.38
1/8	0.125	3.17
5/32	0.156	3.97
3/16	0.188	4.76
7/32	0.219	5.56
1/4	0.25	6.35
9/32	0.281	7.14
5/16	0.313	7.94
11/32	0.344	8.73
3/8	0.375	9.52
13/32	0.406	10.32
7/16	0.438	11.11
15/32	0.469	11.91
1/2	0.5	12.70
17/32	0.531	13.49
9/16	0.563	14.29
19/32	0.594	15.08
5/8	0.625	15.88
21/32	0.656	16.67
11/16	0.688	17.46
23/32	0.719	18.26
3/4	0.75	19.05
25/32	0.781	19.84
13/16	0.813	20.64
27/32	0.844	21.43
7/8	0.875	22.22
29/32	0.906	23.02
15/16	0.938	23.81
31/32	0.969	24.61
1	1.0	25.40
1 1/32	1.031	26.19
1 1/16	1.063	26.99
1 3/32	1.094	27.78
1 1/8	1.125	28.57
1 5/32	1.156	29.37
1 3/16	1.188	30.16
1 7/32	1.219	30.96
1 1/4	1.25	31.75
1 9/32	1.281	32.54
1 5/16	1.313	33.34
1 11/32	1.344	34.13
1 3/8	1.375	34.93
1 13/32	1.406	35.72
1 7/16	1.438	36.51
1 15/32	1.469	37.31
1 1/2	1.5	38.10
1 17/32	1.531	38.89
1 9/16	1.563	39.69
1 19/32	1.594	40.48
1 5/8	1.625	41.28
1 21/32	1.656	42.07
1 11/16	1.688	42.86
1 23/32	1.719	43.66
1 3/4	1.75	44.45
1 25/32	1.781	45.24
1 13/16	1.813	46.04
1 27/32	1.844	46.83
1 7/8	1.875	47.62
1 29/32	1.906	48.42
1 15/16	1.938	49.21
1 31/32	1.969	50.01
2	2.0	50.80

FRACTION (IN.)	DECIMAL (IN.)	METRIC (MM)
2 1/32	2.031	51.59
2 1/16	2.063	52.39
2 3/32	2.094	53.18
2 1/8	2.125	53.98
2 5/32	2.156	54.77
2 3/16	2.188	55.56
2 7/32	2.219	56.36
2 1/4	2.25	57.15
2 9/32	2.281	57.94
2 5/16	2.313	58.74
2 11/32	2.344	59.53
2 3/8	2.375	60.32
2 13/32	2.406	61.12
2 7/16	2.438	61.91
2 15/32	2.469	62.71
2 1/2	2.5	63.50
2 17/32	2.531	64.29
2 9/16	2.563	65.09
2 19/32	2.594	65.88
2 5/8	2.625	66.68
2 21/32	2.656	67.47
2 11/16	2.688	68.26
2 23/32	2.719	69.06
2 3/4	2.75	69.85
2 25/32	2.781	70.64
2 13/16	2.813	71.44
2 27/32	2.844	72.23
2 7/8	2.875	73.03
2 29/32	2.906	73.82
2 15/16	2.938	74.61
2 31/32	2.969	75.41
3	3.0	76.20
3 1/32	3.031	76.99
3 1/16	3.063	77.79
3 3/32	3.094	78.58
3 1/8	3.125	79.38
3 5/32	3.156	80.17
3 3/16	3.188	80.96
3 7/32	3.219	81.76
3 1/4	3.25	82.55
3 9/32	3.281	83.34
3 5/16	3.313	84.14
3 11/32	3.344	84.93
3 3/8	3.375	85.73
3 13/32	3.406	86.52
3 7/16	3.438	87.31
3 15/32	3.469	88.11
3 1/2	3.5	88.90
3 17/32	3.531	89.69
3 9/16	3.563	90.49
3 19/32	3.594	91.28
3 5/8	3.625	92.08
3 21/32	3.656	92.87
3 11/16	3.688	93.66
3 23/32	3.719	94.46
3 3/4	3.75	95.25
3 25/32	3.781	96.04
3 13/16	3.813	96.84
3 27/32	3.844	97.63
3 7/8	3.875	98.43
3 29/32	3.906	99.22
3 15/16	3.938	100.01
3 31/32	3.969	100.81
4	4.0	101.60

FRACTION (IN.)	DECIMAL (IN.)	METRIC (MM)
4 1/32	4.031	102.39
4 1/16	4.063	103.19
4 3/32	4.094	103.98
4 1/8	4.125	104.77
4 5/32	4.156	105.57
4 3/16	4.188	106.36
4 7/32	4.219	107.16
4 1/4	4.25	107.95
4 9/32	4.281	108.74
4 5/16	4.313	109.54
4 11/32	4.344	110.33
4 3/8	4.375	111.12
4 13/32	4.406	111.92
4 7/16	4.438	112.71
4 15/32	4.469	113.51
4 1/2	4.5	114.30
4 17/32	4.531	115.09
4 9/16	4.563	115.89
4 19/32	4.594	116.68
4 5/8	4.625	117.47
4 21/32	4.656	118.27
4 11/16	4.688	119.06
4 23/32	4.719	119.86
4 3/4	4.75	120.65
4 25/32	4.781	121.44
4 13/16	4.813	122.24
4 27/32	4.844	123.03
4 7/8	4.875	123.82
4 29/32	4.906	124.62
4 15/16	4.938	125.41
4 31/32	4.969	126.21
5	5.0	127.00
5 1/32	5.031	127.79
5 1/16	5.063	128.59
5 3/32	5.094	129.38
5 1/8	5.125	130.17
5 5/32	5.156	130.97
5 3/16	5.188	131.76
5 7/32	5.219	132.56
5 1/4	5.25	133.35
5 9/32	5.281	134.14
5 5/16	5.313	134.94
5 11/32	5.344	135.73
5 3/8	5.375	136.52
5 13/32	5.406	137.32
5 7/16	5.438	138.11
5 15/32	5.469	138.91
5 1/2	5.5	139.70
5 17/32	5.531	140.49
5 9/16	5.563	141.29
5 19/32	5.594	142.08
5 5/8	5.625	142.88
5 21/32	5.656	143.67
5 11/16	5.688	144.46
5 23/32	5.719	145.26
5 3/4	5.75	146.05
5 25/32	5.781	146.84
5 13/16	5.813	147.64
5 27/32	5.844	148.43
5 7/8	5.875	149.22
5 29/32	5.906	150.02
5 15/16	5.938	150.81
5 31/32	5.969	151.61
6	6.0	152.40

CONTENTS

TITLE	PAGE NO.	TITLE	PAGE NO.
Miscellaneous Hose Fittings		Brackets	
Male Swivel	4-5	Fitting Brackets	48-49
Female Swivel	5	Center Brackets	50-51
Center Joiner	6	Universal	51
Clutch Special	6	Rubber Hose Components	52
Compression	6	Plastic Clips	53
Lifesaver, Universal	7	Rubber Brake Hose & Accessories	
Banjo Fittings		Rubber Brake Hose	54
Round Style - Straight	8-9	Rubber Hose Cutter	54
Round Style - Bent	10-12	Stainless Steel Braided Hose & Accessories	
Block Style	13-15	Fitting Joint Supports	55
Tube Style - Either Side	16-17	Clear Center Fitting Adapter Tube	55
Universal	17	Stainless Steel Braided Brake Hose	55
Tube Style - Left/Right	18-23	Polished Stainless Steel Fittings	55
Center Support Fittings		Tools	55
Clip Mount	24	Metal Tube Program	
Bracket Mount	25	EziBend Tube	56
Imperial Female Fittings		Brake Tube Protector	56
Clip Mount	26-28	Die & Punch Guide	57
Bolt On Mount	29-30	Brake Tube Pliers	58
No Mount	30	Brake Tube Bender	58
Bulkhead Mount	31-32	Miscellaneous	59
Bracket Mount	32	Tube Nuts	60
Imperial Male		Weld On Banjo Heads	60
Standard Mount	33-34	Thread Adapters	61
Bulkhead Mount	34	Female Tube Joiners	61
Clip Mount	34	Copper Washers	61
Hose Joiner	35	Bulkhead Nuts	62
Metric Female Fittings		3 Way Tube Tee's With Mounting Hole	62
Clip Mount	36-39	Banjo Unions	62
Bolt On Mount	40	Banjo Adapters	62
Bulkhead Mount	40	Banjo Bolts	63
Bracket Mount	41	Bleed Screws	63
Spline Mount	42	Male Test Adapters	63
Metric Male Fittings		Bump Tube Adapters	63
Standard Mount	43	Assortment Kits	64
Bulkhead Mount	44	Test Cones	65
Clip Mount	44	System Aids & Accessories	65-66
Fittings with Heavy Duty Silver Finish	45	Fitting Plugs	66
Harley Davidson Fittings		Consumables	67
Joiners	46	Index	68-72
Swivels	46-47	Miscellaneous Information	73-74
Banjos	47	Promotional Material	75

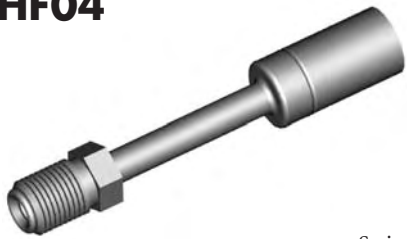
CAUTION: Illustrations shown in this reference guide may vary slightly in detail from actual parts due to manufacturer's tolerances and design differences. Note: Illustrations not to scale.

DISCLAIMER NOTICE

The illustrations and data contained in this illustrated reference guide are intended as an aid in identifying the various products and have been obtained and developed from the specifications and information available. Although Brakequip believes that such illustrations and data are correct, errors may exist and further verification on the part of the user may be necessary.

MISCELLANEOUS HOSE FITTINGS

HF04



Swivel

THREAD	FLARE	TUBE SIZE	OAL	FITS
7/16"NS	Double	1/4"	80mm	V

HF06



Swivel 90°

THREAD	FLARE	TUBE SIZE	OAL	FITS
7/16"NS	Double	1/4"	61mm	V

HF07



Swivel 45°

THREAD	FLARE	TUBE SIZE	OAL	FITS
7/16"NS	Double	1/4"	76mm	V

HF08



Swivel

THREAD	FLARE	TUBE SIZE	OAL	FITS
M10 x 1	DIN	3/16"	70mm	EU

HF15



Swivel

THREAD	FLARE	TUBE SIZE	OAL	FITS
7/16"NS	Double	1/4"	52mm	V

HF16



Swivel

THREAD	FLARE	TUBE SIZE	OAL	FITS
3/8"NF	Double	3/16"	57mm	V

HF16B



Swivel - Brass

THREAD	FLARE	TUBE SIZE	OAL	FITS
3/8"NF	Double	3/16"	49mm	V

HF17



Swivel 90°

THREAD	FLARE	TUBE SIZE	OAL	FITS
3/8"NF	Double	3/16"	49mm	V

HF18



Swivel

THREAD	FLARE	TUBE SIZE	OAL	FITS
1/2"NF	Double	5/16"	72mm	V

HF28



Swivel

THREAD	FLARE	TUBE SIZE	OAL	FITS
1/2"NF	Double	5/16"	60mm	V

HF29



Swivel 90°

THREAD	FLARE	TUBE SIZE	OAL	FITS
1/2"NF	Double	5/16"	62mm	V

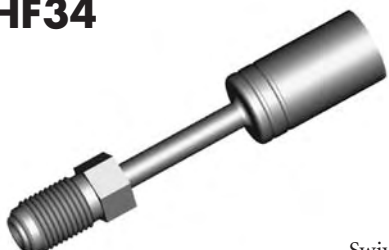
HF33



Swivel 45°

THREAD	FLARE	TUBE SIZE	OAL	FITS
3/8"NF	Double	3/16"	65mm	V

HF34



Swivel

THREAD	FLARE	TUBE SIZE	OAL	FITS
M10 x 1	Double	3/16"	71mm	V

HF39



Swivel

THREAD	FLARE	TUBE SIZE	OAL	FITS
7/16"NS	Double	1/4"	54mm	V

HF52



Swivel

THREAD	FLARE	TUBE SIZE	OAL	FITS
M10 x 1	DIN	3/16"	57mm	US

MALE SWIVEL

A = Asian

EU = European

US = United States

UNI = Universal

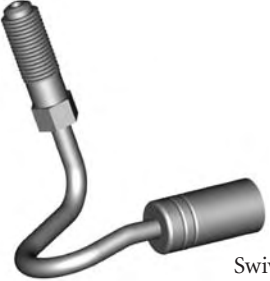
V = Various

MISCELLANEOUS HOSE FITTINGS

MALE SWIVEL

FEMALE SWIVEL


HF53



Swivel

THREAD	FLARE	TUBE SIZE	OAL	FITS
M10 x 1	DIN	3/16"	57mm	US

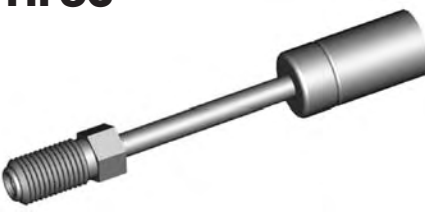
HF54



Swivel

THREAD	FLARE	TUBE SIZE	OAL	FITS
3/8"NF	Double	3/16"	125mm	US


HF63



Swivel

THREAD	FLARE	TUBE SIZE	OAL	FITS
3/8"NF	Double	3/16"	88mm	V


HF81



Swivel

THREAD	FLARE	TUBE SIZE	OAL	FITS
3/8"NF	Bubble	3/16"	76mm	V


HF82



Swivel

THREAD	FLARE	TUBE SIZE	OAL	FITS
M10x1	DIN	3/16"	71mm	V

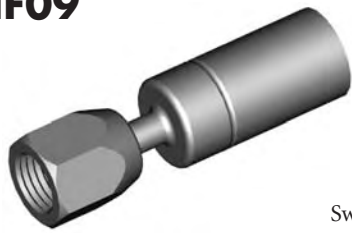
HF89



Swivel

THREAD	FLARE	TUBE SIZE	OAL	FITS
7/16"NS	Double	1/4"	120mm	US

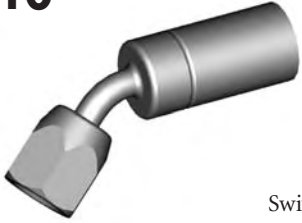
HF09



Swivel
No. 3 JIC

THREAD	FLARE	TUBE SIZE	OAL	FITS
3/8"NF	37° Double	3/16"	58mm	V

HF10



Swivel 45°
No. 3 JIC

THREAD	FLARE	TUBE SIZE	OAL	FITS
3/8"NF	37° Double	3/16"	52mm	V

HF11



Swivel 90°
No. 3 JIC

THREAD	FLARE	TUBE SIZE	OAL	FITS
3/8"NF	37° Double	3/16"	45mm	V

HF12



Swivel
No. 4 JIC

THREAD	FLARE	TUBE SIZE	OAL	FITS
7/16"NF	37° Double	1/4"	50mm	V


HF13



Swivel 45°
No. 4 JIC

THREAD	FLARE	TUBE SIZE	OAL	FITS
7/16"NF	37° Double	1/4"	56mm	V

HF14



Swivel 90°
No. 4 JIC

THREAD	FLARE	TUBE SIZE	OAL	FITS
7/16"NF	37° Double	1/4"	48mm	V

HF61



Swivel
No. 2 JIC

THREAD	FLARE	TUBE SIZE	OAL	FITS
5/16"NF	37° Double		35mm	V

A = Asian

EU = European

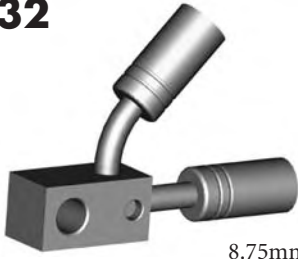
US = United States

UNI = Universal

V = Various

MISCELLANEOUS HOSE FITTINGS

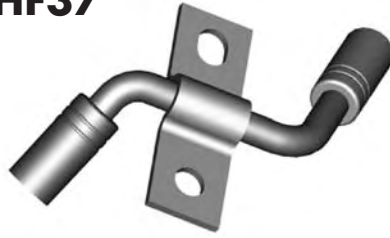
HF32



8.75mm Hole

THREAD	FLARE	TUBE SIZE	OAL	FITS
		1/4"	75mm	A

HF37



THREAD	FLARE	TUBE SIZE	OAL	FITS
		8mm	86mm	A

HF38



THREAD	FLARE	TUBE SIZE	OAL	FITS
		8mm	86mm	A

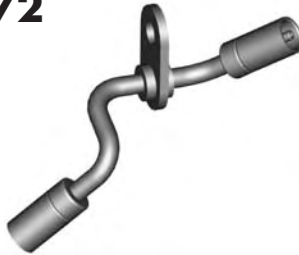
CENTER JOINER

HF71



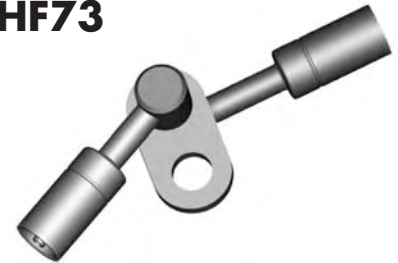
THREAD	FLARE	TUBE SIZE	OAL	FITS
			130mm	A

HF72



THREAD	FLARE	TUBE SIZE	OAL	FITS
			130mm	A

HF73



THREAD	FLARE	TUBE SIZE	OAL	FITS
			95mm	A

HF74



THREAD	FLARE	TUBE SIZE	OAL	FITS
			95mm	A

HF300



THREAD	FLARE	TUBE SIZE	OAL	FITS
			190mm	US

HF301



THREAD	FLARE	TUBE SIZE	OAL	FITS
			190mm	US

CLUTCH SPECIAL

HF35



THREAD	FLARE	TUBE SIZE	OAL	FITS
			43mm	US

HF62



THREAD	FLARE	TUBE SIZE	OAL	FITS
			35mm	US

HF83



O-Ring Included

THREAD	FLARE	TUBE SIZE	OAL	FITS
			35mm	US

COMPRESSION

HF30



For 3/16" Tube

THREAD	FLARE	TUBE SIZE	OAL	FITS
		3/16"	48mm	UNI

HF31



For 1/4" Tube

THREAD	FLARE	TUBE SIZE	OAL	FITS
		1/4"	51mm	UNI

A = Asian

EU = European

US = United States

UNI = Universal

V = Various

MISCELLANEOUS HOSE FITTINGS

LIFESAVER

UNIVERSAL

HF01



THREAD	FLARE	TUBE SIZE	OAL	FITS
		3/16"	27mm	UNI

HF05



Center Support
Lifesaver

THREAD	FLARE	TUBE SIZE	OAL	FITS
			25mm	UNI

HF26



THREAD	FLARE	TUBE SIZE	OAL	FITS
		1/4"	27mm	UNI

HF27



THREAD	FLARE	TUBE SIZE	OAL	FITS
		5/16"	27mm	UNI

HF02



THREAD	FLARE	TUBE SIZE	OAL	FITS
		3/16"	100mm	UNI

HF03



THREAD	FLARE	TUBE SIZE	OAL	FITS
		1/4"	100mm	UNI

A = Asian

EU = European

US = United States

UNI = Universal

V = Various

BANJO FITTINGS

ROUND STYLE - STRAIGHT

HFB01



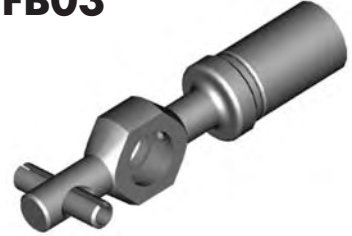
HOLE	THICK	WIDTH	ANGLE	OAL	FITS
10mm	8mm	17mm	-	54mm	V

HFB02



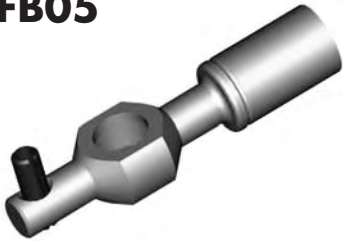
HOLE	THICK	WIDTH	ANGLE	OAL	FITS
10mm	10mm	18mm	-	64mm	A

HFB03



HOLE	THICK	WIDTH	ANGLE	OAL	FITS
10mm	8mm	17mm	-	66mm	A

HFB05



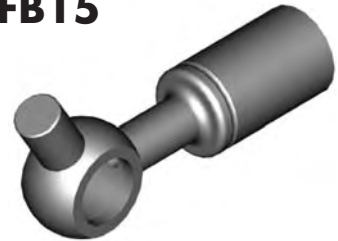
HOLE	THICK	WIDTH	ANGLE	OAL	FITS
10mm	10mm	17mm	-	65mm	A

HFB09



HOLE	THICK	WIDTH	ANGLE	OAL	FITS
10mm	10mm	18mm	-	55mm	V

HFB15



HOLE	THICK	WIDTH	ANGLE	OAL	FITS
10mm	10mm	23mm	-	52mm	A

HFB19



HOLE	THICK	WIDTH	ANGLE	OAL	FITS
15mm	13.5mm	25mm	-	45mm	US

HFB27



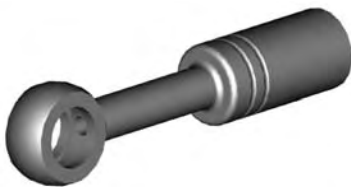
HOLE	THICK	WIDTH	ANGLE	OAL	FITS
8mm	6mm	14mm	-	53mm	V

HFB28



HOLE	THICK	WIDTH	ANGLE	OAL	FITS
10mm	10mm	22mm	-	54mm	A

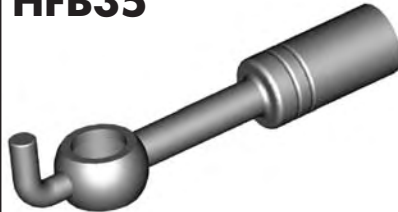
HFB34



Bendable

HOLE	THICK	WIDTH	ANGLE	OAL	FITS
10mm	8mm	17mm	-	69mm	UNI

HFB35



Bendable

HOLE	THICK	WIDTH	ANGLE	OAL	FITS
10mm	10mm	17mm	-	80mm	UNI

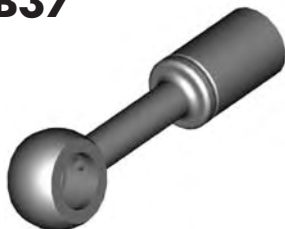
HFB36



Bendable

HOLE	THICK	WIDTH	ANGLE	OAL	FITS
10mm	8mm	17mm	-	84mm	UNI

HFB37



Bendable

HOLE	THICK	WIDTH	ANGLE	OAL	FITS
10mm	10mm	18mm	-	64mm	UNI

HFB47



HOLE	THICK	WIDTH	ANGLE	OAL	FITS
12mm	10mm	19mm	-	55mm	V

HFB50



Right

HOLE	THICK	WIDTH	ANGLE	OAL	FITS
10mm	10mm	28mm	-	50mm	US

A = Asian

EU = European

US = United States

UNI = Universal

V = Various

BANJO FITTINGS

ROUND STYLE - STRAIGHT

HFB73



Left

HOLE	THICK	WIDTH	ANGLE	OAL	FITS
10mm	10mm	28mm	-	50mm	US

HFB111



HOLE	THICK	WIDTH	ANGLE	OAL	FITS
8mm	13mm	21mm	-	40mm	US

HFB344



HOLE	THICK	WIDTH	ANGLE	OAL	FITS
10mm	10mm	17mm		58mm	A

HFB350



HOLE	THICK	WIDTH	ANGLE	OAL	FITS
10mm	10mm	18mm		45mm	A

HFB351



Left

HOLE	THICK	WIDTH	ANGLE	OAL	FITS
10mm	10mm	18mm		55mm	A

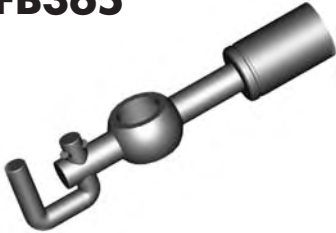
HFB352



Right

HOLE	THICK	WIDTH	ANGLE	OAL	FITS
10mm	10mm	18mm		55mm	A

HFB365



HOLE	THICK	WIDTH	ANGLE	OAL	FITS
10mm	8mm	17mm		63mm	A

HFB375



HOLE	THICK	WIDTH	ANGLE	OAL	FITS
10mm	10mm	18mm		65mm	EU

BANJO FITTINGS

HFB24



Left

HOLE	THICK	WIDTH	ANGLE	OAL	FITS
10mm	8mm	17mm	75°	64mm	A

HFB29



HOLE	THICK	WIDTH	ANGLE	OAL	FITS
10mm	10mm	28mm	40°	52mm	US

HFB30



Right

HOLE	THICK	WIDTH	ANGLE	OAL	FITS
10mm	10mm	17mm	90°	52mm	A

HFB31



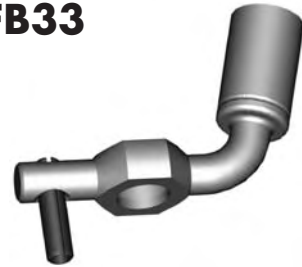
HOLE	THICK	WIDTH	ANGLE	OAL	FITS
10mm	10mm	17mm	25°	68mm	A

HFB32



HOLE	THICK	WIDTH	ANGLE	OAL	FITS
10mm	8mm	17mm	90°	39mm	V

HFB33



HOLE	THICK	WIDTH	ANGLE	OAL	FITS
10mm	8mm	17mm	75°	60mm	A

ROUND STYLE - BENT

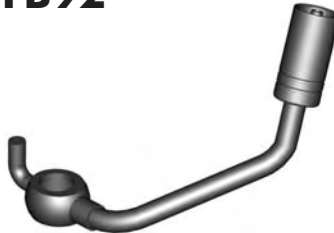
HFB75



Left

HOLE	THICK	WIDTH	ANGLE	OAL	FITS
10mm	10mm	17mm	90°	61mm	A

HFB92



Left

HOLE	THICK	WIDTH	ANGLE	OAL	FITS
10mm	10mm	18mm	55°	90mm	A

HFB93



Right

HOLE	THICK	WIDTH	ANGLE	OAL	FITS
10mm	10mm	18mm	55°	90mm	A

HFB105



Left

HOLE	THICK	WIDTH	ANGLE	OAL	FITS
3/8"	1/2"	21mm	25°	113mm	US

HFB106



Right

HOLE	THICK	WIDTH	ANGLE	OAL	FITS
3/8"	1/2"	21mm	25°	113mm	US

HFB157



HOLE	THICK	WIDTH	ANGLE	OAL	FITS
10mm	10mm	18mm	70°	102mm	A

HFB158



Left

HOLE	THICK	WIDTH	ANGLE	OAL	FITS
7/16"	15mm	35mm	35°	57mm	US

HFB159



Right

HOLE	THICK	WIDTH	ANGLE	OAL	FITS
7/16"	15mm	35mm	35°	57mm	US

HFB164



Right

HOLE	THICK	WIDTH	ANGLE	OAL	FITS
10mm	8mm	17mm	75°	64mm	A

A = Asian

EU = European

US = United States

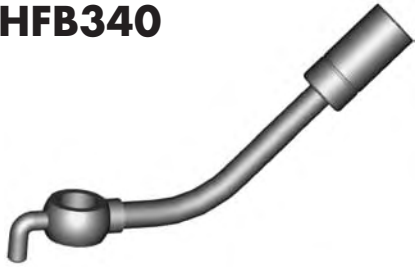
UNI = Universal

V = Various

BANJO FITTINGS

ROUND STYLE - BENT

HFB340



HOLE	THICK	WIDTH	ANGLE	OAL	FITS
10mm	10mm	18mm	45°	100mm	A

HFB341



HOLE	THICK	WIDTH	ANGLE	OAL	FITS
10mm	10mm	18mm	75°	55mm	A

HFB342



Right

HOLE	THICK	WIDTH	ANGLE	OAL	FITS
10mm	8mm	17mm	15°	60mm	A

HFB343



Left

HOLE	THICK	WIDTH	ANGLE	OAL	FITS
10mm	8mm	17mm	15°	60mm	A

HFB345



Left

HOLE	THICK	WIDTH	ANGLE	OAL	FITS
10mm	10mm	18mm	50°	45mm	A

HFB346



Right

HOLE	THICK	WIDTH	ANGLE	OAL	FITS
10mm	10mm	18mm	50°	45mm	A

HFB348



Left

HOLE	THICK	WIDTH	ANGLE	OAL	FITS
10mm	15mm	18mm	30°	50mm	A

HFB349



Right

HOLE	THICK	WIDTH	ANGLE	OAL	FITS
10mm	15mm	18mm	30°	50mm	A

HFB353



Right

HOLE	THICK	WIDTH	ANGLE	OAL	FITS
10mm	8mm	18mm	75°	60mm	A

HFB354



Left

HOLE	THICK	WIDTH	ANGLE	OAL	FITS
10mm	8mm	18mm	75°	60mm	A

HFB356



Left

HOLE	THICK	WIDTH	ANGLE	OAL	FITS
10mm	8mm	18mm	40°	60mm	A

HFB357



Right

HOLE	THICK	WIDTH	ANGLE	OAL	FITS
10mm	8mm	18mm	40°	60mm	A

HFB358



Left

HOLE	THICK	WIDTH	ANGLE	OAL	FITS
10mm	8mm	17mm	75°	45mm	A

HFB359



Right

HOLE	THICK	WIDTH	ANGLE	OAL	FITS
10mm	8mm	17mm	75°	45mm	A

HFB360



Right

HOLE	THICK	WIDTH	ANGLE	OAL	FITS
10mm	8mm	18mm	55°	65mm	A

A = Asian

EU = European

US = United States

UNI = Universal

V = Various

BANJO FITTINGS

ROUND STYLE - BENT

HFB361



Left

HOLE	THICK	WIDTH	ANGLE	OAL	FITS
10mm	8mm	18mm	55°	65mm	A

HFB362



Left

HOLE	THICK	WIDTH	ANGLE	OAL	FITS
10mm	8mm	18mm	80°	45mm	A

HFB363



Right

HOLE	THICK	WIDTH	ANGLE	OAL	FITS
10mm	8mm	18mm	80°	45mm	A

HFB364



HOLE	THICK	WIDTH	ANGLE	OAL	FITS
10mm	8mm	18mm	75°	50mm	A

HFB372



HOLE	THICK	WIDTH	ANGLE	OAL	FITS
10mm	10mm	18mm	60°	45mm	A

HFB373



HOLE	THICK	WIDTH	ANGLE	OAL	FITS
10mm	10mm	18mm	55°	65mm	A

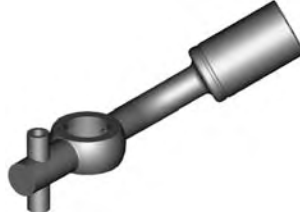
HFB389



Right

HOLE	THICK	WIDTH	ANGLE	OAL	FITS
10mm	8mm	17mm	45°	75mm	A

HFB390



Left

HOLE	THICK	WIDTH	ANGLE	OAL	FITS
10mm	8mm	17mm	45°	75mm	A

A = Asian

EU = European

US = United States

UNI = Universal

V = Various

BANJO FITTINGS

BLOCK STYLE

HFB07



Right

HOLE	THICK	WIDTH	ANGLE	OAL	FITS
10mm	16mm	22mm	27°	59mm	A

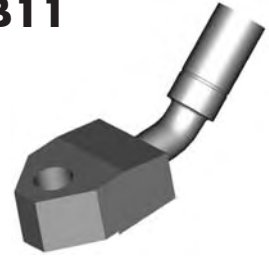
HFB08



Left

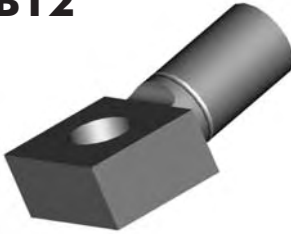
HOLE	THICK	WIDTH	ANGLE	OAL	FITS
10mm	16mm	22mm	27°	59mm	A

HFB11



HOLE	THICK	WIDTH	ANGLE	OAL	FITS
10mm	16mm	28mm	40°	92mm	A

HFB12



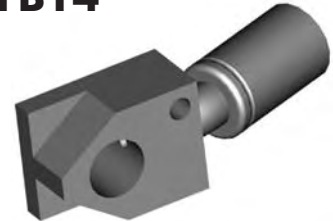
HOLE	THICK	WIDTH	ANGLE	OAL	FITS
10mm	11.5mm	20mm	10°	46mm	V

HFB13



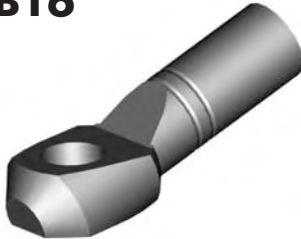
HOLE	THICK	WIDTH	ANGLE	OAL	FITS
10mm	16mm	16mm	-	42mm	V

HFB14



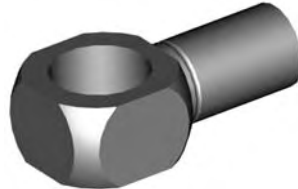
HOLE	THICK	WIDTH	ANGLE	OAL	FITS
10mm	13mm	20mm	20°	55mm	US

HFB16



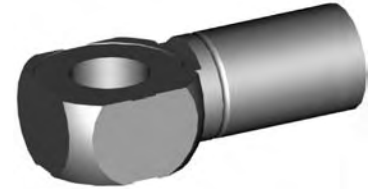
HOLE	THICK	WIDTH	ANGLE	OAL	FITS
10mm	10.4mm	19mm	20°	54mm	EU

HFB38



HOLE	THICK	WIDTH	ANGLE	OAL	FITS
16mm	14mm	22.2mm	-	44mm	US

HFB40



HOLE	THICK	WIDTH	ANGLE	OAL	FITS
10mm	11.3mm	19mm	-	42mm	US

HFB41



HOLE	THICK	WIDTH	ANGLE	OAL	FITS
7/16"	14mm	48mm	20°	50mm	US

HFB45



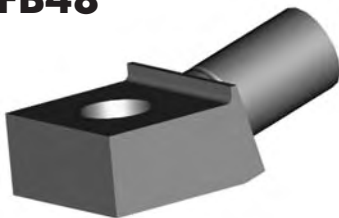
HOLE	THICK	WIDTH	ANGLE	OAL	FITS
10mm	11mm	19.6mm	10°	47mm	US

HFB46



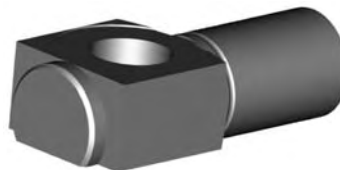
HOLE	THICK	WIDTH	ANGLE	OAL	FITS
10mm	11mm	17.6mm	10°	44mm	US

HFB48



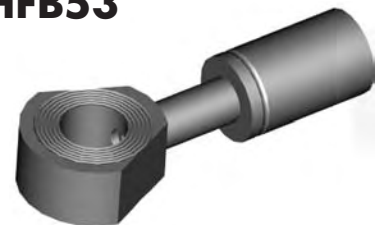
HOLE	THICK	WIDTH	ANGLE	OAL	FITS
7/16"	1/2"	25.5mm	15°	49mm	US

HFB49



HOLE	THICK	WIDTH	ANGLE	OAL	FITS
10mm	11.3mm	19mm	-	44mm	US

HFB53



HOLE	THICK	WIDTH	ANGLE	OAL	FITS
10mm	10mm	22mm	-	57mm	US

A = Asian

EU = European

US = United States

UNI = Universal

V = Various

BANJO FITTINGS

HFB54



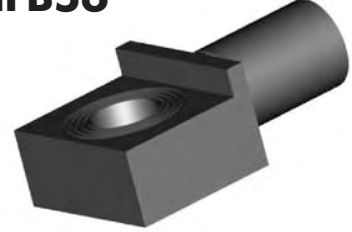
HOLE	THICK	WIDTH	ANGLE	OAL	FITS
7/16"	11mm	19mm		43mm	US

HFB55



HOLE	THICK	WIDTH	ANGLE	OAL	FITS
7/16"	1/2"	25mm	-	47mm	US

HFB56



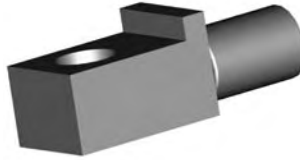
HOLE	THICK	WIDTH	ANGLE	OAL	FITS
10mm	11.7mm	26mm		45mm	US

HFB57



HOLE	THICK	WIDTH	ANGLE	OAL	FITS
10mm	11.6mm	33mm	-	49mm	US

HFB59



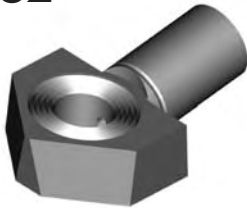
HOLE	THICK	WIDTH	ANGLE	OAL	FITS
7/16"	14.8mm	19.5mm	-	52mm	US

HFB60



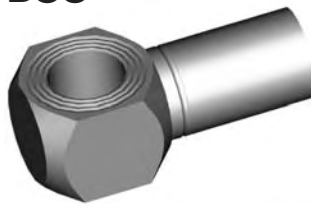
HOLE	THICK	WIDTH	ANGLE	OAL	FITS
7/16"	11.5mm	20mm	10°	46mm	V

HFB62



HOLE	THICK	WIDTH	ANGLE	OAL	FITS
10mm	11mm	28mm	10°	44mm	US

HFB66



HOLE	THICK	WIDTH	ANGLE	OAL	FITS
7/16"	14.7mm	19mm	-	41mm	US

HFB67



HOLE	THICK	WIDTH	ANGLE	OAL	FITS
3/8"	1/2"	28mm	-	48mm	US

HFB72



HOLE	THICK	WIDTH	ANGLE	OAL	FITS
7/16"	11mm	19mm	10°	42mm	US

HFB81



HOLE	THICK	WIDTH	ANGLE	OAL	FITS
10mm	23mm	16mm	50°	46mm	A

HFB84



HOLE	THICK	WIDTH	ANGLE	OAL	FITS
7/16"	11mm	19.8mm	25°	50mm	US

HFB85



HOLE	THICK	WIDTH	ANGLE	OAL	FITS
10mm	14.7mm	48mm	20°	50mm	US

HFB91



HOLE	THICK	WIDTH	ANGLE	OAL	FITS
10mm	11.4mm	20mm	-	42mm	US

HFB100



HOLE	THICK	WIDTH	ANGLE	OAL	FITS
10mm	8mm	17mm	-	51mm	EU

BLOCK STYLE

A = Asian

EU = European

US = United States

UNI = Universal

V = Various

BANJO FITTINGS

HFB101



HOLE	THICK	WIDTH	ANGLE	OAL	FITS
12mm	8mm	19mm	-	51mm	EU

HFB112



HOLE	THICK	WIDTH	ANGLE	OAL	FITS
8mm	14mm	17mm	35°	50mm	US

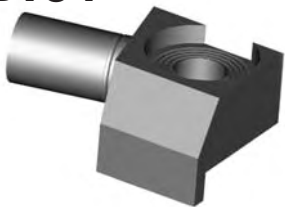
HFB133



Right

HOLE	THICK	WIDTH	ANGLE	OAL	FITS
10mm	11mm	26mm	-	90mm	US

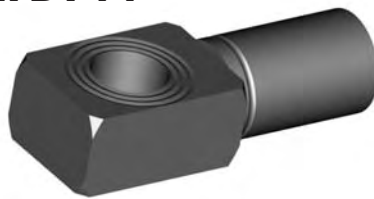
HFB134



Left

HOLE	THICK	WIDTH	ANGLE	OAL	FITS
10mm	11mm	26mm	-	50mm	US

HFB144



HOLE	THICK	WIDTH	ANGLE	OAL	FITS
10mm	11.5mm	17mm		46mm	V

HFB145



HOLE	THICK	WIDTH	ANGLE	OAL	FITS
12mm	8mm	19mm	-	61mm	EU

HFB146



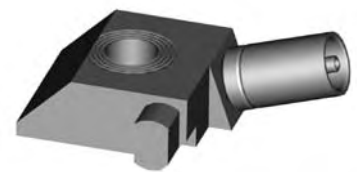
HOLE	THICK	WIDTH	ANGLE	OAL	FITS
12mm	11.5mm	20mm	10°	50mm	EU

HFB149



HOLE	THICK	WIDTH	ANGLE	OAL	FITS
10mm	24mm	16mm	50°	55mm	A

HFB165



Left

HOLE	THICK	WIDTH	ANGLE	OAL	FITS
7/16"	14.7mm	32.5mm	20°	65mm	US

HFB166



Right

HOLE	THICK	WIDTH	ANGLE	OAL	FITS
7/16"	14.7mm	32.5mm	20°	65mm	US

HFB187



HOLE	THICK	WIDTH	ANGLE	OAL	FITS
10mm	8mm	19mm		61mm	EU

HFB230



Right

HOLE	THICK	WIDTH	ANGLE	OAL	FITS
3/8"	7/16"	22mm	10°	45mm	US

HFB231



Left

HOLE	THICK	WIDTH	ANGLE	OAL	FITS
3/8"	7/16"	22mm	10°	45mm	US

HFB300



HOLE	THICK	WIDTH	ANGLE	OAL	FITS
10mm	11.4mm	17mm	15°	50mm	A

HFB384



HOLE	THICK	WIDTH	ANGLE	OAL	FITS
3/8"	1/2"	25.4mm		45mm	US

A = Asian

EU = European

US = United States

UNI = Universal

V = Various

BLOCK STYLE

BANJO FITTINGS

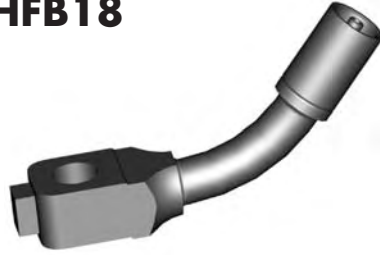
TUBE STYLE - EITHER SIDE

HFB17



HOLE	THICK	WIDTH	ANGLE	OAL	FITS
10mm	11.5mm	17mm	35°	78mm	V

HFB18



HOLE	THICK	WIDTH	ANGLE	OAL	FITS
10mm	13mm	18mm	50°	78mm	A

HFB21



HOLE	THICK	WIDTH	ANGLE	OAL	FITS
10mm	11.5mm	17mm	50°	72mm	V

HFB39



HOLE	THICK	WIDTH	ANGLE	OAL	FITS
3/8"	1/2"	19.2mm	15°	104mm	US

HFB51



HOLE	THICK	WIDTH	ANGLE	OAL	FITS
10mm	11mm	22.2mm	55°	75mm	US

HFB58



HOLE	THICK	WIDTH	ANGLE	OAL	FITS
3/8"	7/16"	22.2mm	65°	80mm	US

HFB61



HOLE	THICK	WIDTH	ANGLE	OAL	FITS
7/16"	14.6mm	22.2mm	105°	60mm	US

HFB80



HOLE	THICK	WIDTH	ANGLE	OAL	FITS
7/16"	15mm	20mm	30°	110mm	US

HFB90



HOLE	THICK	WIDTH	ANGLE	OAL	FITS
3/8"	7/16"	19mm	35°	75mm	US

HFB98



HOLE	THICK	WIDTH	ANGLE	OAL	FITS
3/8"	1/2"	25mm	25°	120mm	US

HFB148



HOLE	THICK	WIDTH	ANGLE	OAL	FITS
3/8"	1/2"	25mm	85°	131mm	US

HFB160



HOLE	THICK	WIDTH	ANGLE	OAL	FITS
10mm	11mm	20mm	25°	127mm	US

HFB161



HOLE	THICK	WIDTH	ANGLE	OAL	FITS
10mm	11.5mm	20mm	30°	121mm	US

HFB173



HOLE	THICK	WIDTH	ANGLE	OAL	FITS
10mm	12mm	22.2mm	50°	118mm	US

HFB180



HOLE	THICK	WIDTH	ANGLE	OAL	FITS
10mm	11mm	19.5mm	30°	65mm	US

A = Asian

EU = European

US = United States

UNI = Universal

V = Various

BANJO FITTINGS

TUBE STYLE - EITHER SIDE

UNIVERSAL

HFB182



HOLE	THICK	WIDTH	ANGLE	OAL	FITS
3/8"	1/2"	22.2mm		165mm	US

HFB188



HOLE	THICK	WIDTH	ANGLE	OAL	FITS
3/8"	12.5mm	40mm	90°	116mm	US

HFB193



HOLE	THICK	WIDTH	ANGLE	OAL	FITS
3/8"	1/2"	23mm	10°	110mm	US

HFB203



HOLE	THICK	WIDTH	ANGLE	OAL	FITS
3/8"	11mm	25mm	35°	75mm	US

HFB309



HOLE	THICK	WIDTH	ANGLE	OAL	FITS
10mm	11.5mm	17mm	15°	62mm	V

HFB310



HOLE	THICK	WIDTH	ANGLE	OAL	FITS
10mm	11.5mm	19mm	10°	82mm	V

HFB379



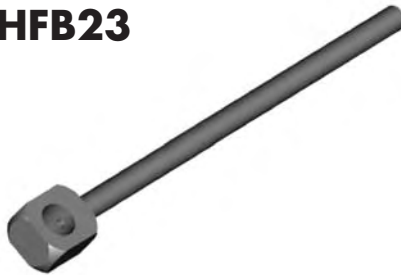
HOLE	THICK	WIDTH	ANGLE	OAL	FITS
12mm	8.5mm	19mm	30°	60mm	EU

HFB22



HOLE	THICK	WIDTH	ANGLE	OAL	FITS
10mm	11.5mm	19mm	-	172mm	UNI

HFB23



HOLE	THICK	WIDTH	ANGLE	OAL	FITS
7/16"	1/2"	19mm	-	172mm	UNI

A = Asian

EU = European

US = United States

UNI = Universal

V = Various

BANJO FITTINGS

TUBE STYLE - LEFT/RIGHT

HFB42



Left

HOLE	THICK	WIDTH	ANGLE	OAL	FITS
10mm	12mm	19.6mm	60°	130mm	US

HFB43



Right

HOLE	THICK	WIDTH	ANGLE	OAL	FITS
10mm	12mm	19.6mm	60°	130mm	US

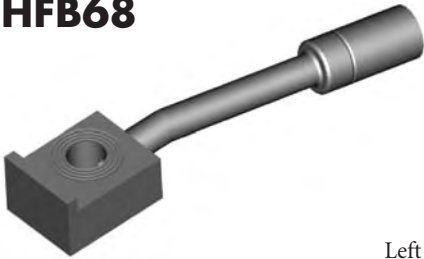
HFB52



Right

HOLE	THICK	WIDTH	ANGLE	OAL	FITS
10mm	11mm	28.6mm	107°	145mm	US

HFB68



Left

HOLE	THICK	WIDTH	ANGLE	OAL	FITS
3/8"	1/2"	22.4mm	7°	110mm	US

HFB69



Right

HOLE	THICK	WIDTH	ANGLE	OAL	FITS
3/8"	1/2"	22.4mm	7°	110mm	US

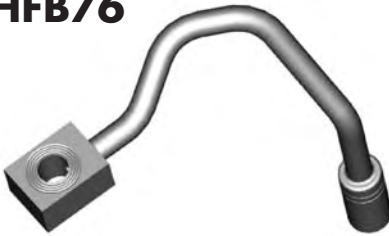
HFB74



Left

HOLE	THICK	WIDTH	ANGLE	OAL	FITS
10mm	11mm	28.6mm	107°	145mm	US

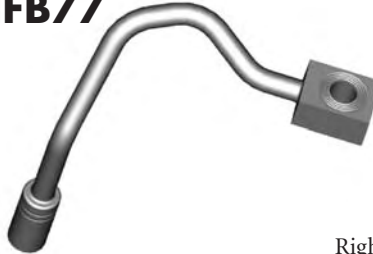
HFB76



Left

HOLE	THICK	WIDTH	ANGLE	OAL	FITS
3/8"	1/2"	19.7mm	90°	143mm	US

HFB77



Right

HOLE	THICK	WIDTH	ANGLE	OAL	FITS
3/8"	1/2"	19.7mm	90°	143mm	US

HFB78



Left

HOLE	THICK	WIDTH	ANGLE	OAL	FITS
7/16"	11mm	22.2mm	90°	133mm	US

HFB79



Right

HOLE	THICK	WIDTH	ANGLE	OAL	FITS
7/16"	11mm	22.2mm	90°	133mm	US

HFB82



Right

HOLE	THICK	WIDTH	ANGLE	OAL	FITS
3/8"	1/2"	26mm	50°	147mm	US

HFB83



Left

HOLE	THICK	WIDTH	ANGLE	OAL	FITS
3/8"	1/2"	26mm	50°	147mm	US

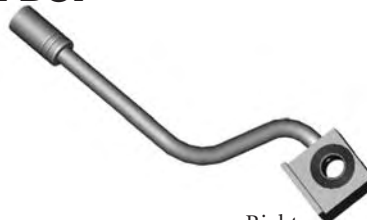
HFB86



Left

HOLE	THICK	WIDTH	ANGLE	OAL	FITS
10mm	11.2mm	28.6mm	70°	175mm	US

HFB87



Right

HOLE	THICK	WIDTH	ANGLE	OAL	FITS
10mm	11.2mm	28.6mm	70°	175mm	US

HFB94



Right

HOLE	THICK	WIDTH	ANGLE	OAL	FITS
7/16"	11.6mm	20mm	90°	110mm	US

A = Asian

EU = European

US = United States

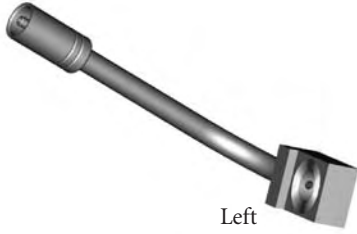
UNI = Universal

V = Various

BANJO FITTINGS

TUBE STYLE - LEFT/RIGHT

HFB95



Left

HOLE	THICK	WIDTH	ANGLE	OAL	FITS
7/16"	11.6mm	20mm	90°	110mm	US

HFB102



Right

HOLE	THICK	WIDTH	ANGLE	OAL	FITS
3/8"	1/2"	23mm	23°	140mm	US

HFB103



Left

HOLE	THICK	WIDTH	ANGLE	OAL	FITS
3/8"	1/2"	23mm	23°	140mm	US

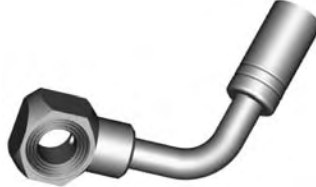
HFB107



Right

HOLE	THICK	WIDTH	ANGLE	OAL	FITS
10mm	11.6mm	20mm	75°	86mm	US

HFB108



Left

HOLE	THICK	WIDTH	ANGLE	OAL	FITS
10mm	11.6mm	20mm	75°	86mm	US

HFB113



Right

HOLE	THICK	WIDTH	ANGLE	OAL	FITS
10mm	11.8mm	42mm	30°	130mm	US

HFB114



Left

HOLE	THICK	WIDTH	ANGLE	OAL	FITS
10mm	11.8mm	42mm	30°	130mm	US

HFB115



Right

HOLE	THICK	WIDTH	ANGLE	OAL	FITS
3/8"	1/2"	22.2mm	55°	112mm	US

HFB116



Left

HOLE	THICK	WIDTH	ANGLE	OAL	FITS
3/8"	1/2"	22.2mm	55°	112mm	US

HFB117



Left

HOLE	THICK	WIDTH	ANGLE	OAL	FITS
10mm	12mm	20mm	90°	50mm	US

HFB118



Right

HOLE	THICK	WIDTH	ANGLE	OAL	FITS
10mm	12mm	20mm	90°	50mm	US

HFB119



Right

HOLE	THICK	WIDTH	ANGLE	OAL	FITS
10mm	12mm	20mm	90°	60mm	US

HFB120



Left

HOLE	THICK	WIDTH	ANGLE	OAL	FITS
10mm	12mm	20mm	90°	60mm	US

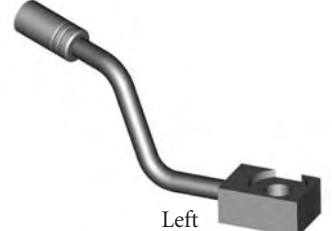
HFB121



Right

HOLE	THICK	WIDTH	ANGLE	OAL	FITS
10mm	12.7mm	22.2mm	65°	127mm	US

HFB122



Left

HOLE	THICK	WIDTH	ANGLE	OAL	FITS
10mm	12.7mm	22.2mm	65°	127mm	US

A = Asian

EU = European

US = United States

UNI = Universal

V = Various

BANJO FITTINGS

HFB123



Left

HOLE	THICK	WIDTH	ANGLE	OAL	FITS
7/16"	14.8mm	22.2mm	85°	90mm	US

HFB124



Right

HOLE	THICK	WIDTH	ANGLE	OAL	FITS
7/16"	14.8mm	22.2mm	85°	90mm	US

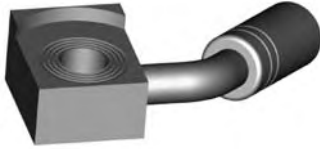
HFB125



Left

HOLE	THICK	WIDTH	ANGLE	OAL	FITS
3/8"	1/2"	25mm	55°	64mm	US

HFB126



Right

HOLE	THICK	WIDTH	ANGLE	OAL	FITS
3/8"	1/2"	25mm	55°	64mm	US

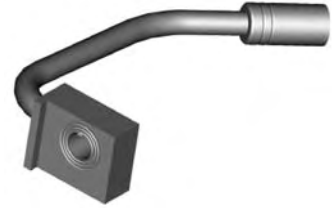
HFB127



Right

HOLE	THICK	WIDTH	ANGLE	OAL	FITS
3/8"	1/2"	25mm	90°	136mm	US

HFB128



Left

HOLE	THICK	WIDTH	ANGLE	OAL	FITS
3/8"	1/2"	25mm	90°	136mm	US

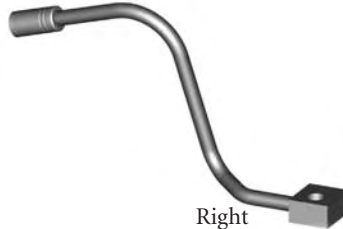
HFB129



Left

HOLE	THICK	WIDTH	ANGLE	OAL	FITS
3/8"	1/2"	25mm	85°	185mm	US

HFB130



Right

HOLE	THICK	WIDTH	ANGLE	OAL	FITS
3/8"	1/2"	25mm	85°	185mm	US

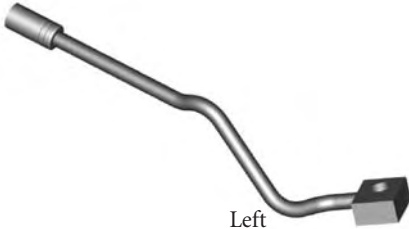
HFB131



Right

HOLE	THICK	WIDTH	ANGLE	OAL	FITS
3/8"	1/2"	25mm	30°	148mm	US

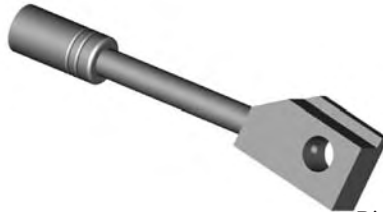
HFB132



Left

HOLE	THICK	WIDTH	ANGLE	OAL	FITS
3/8"	1/2"	25mm	30°	148mm	US

HFB135



Right

HOLE	THICK	WIDTH	ANGLE	OAL	FITS
3/8"	7/16"	22.2mm	10°	114mm	US

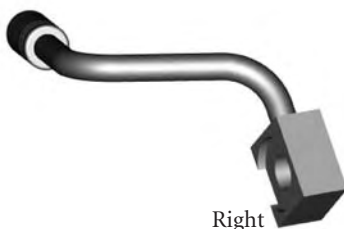
HFB136



Left

HOLE	THICK	WIDTH	ANGLE	OAL	FITS
3/8"	7/16"	22.2mm	10°	114mm	US

HFB142



Right

HOLE	THICK	WIDTH	ANGLE	OAL	FITS
10mm	11.8mm	22.2mm	75°	99mm	US

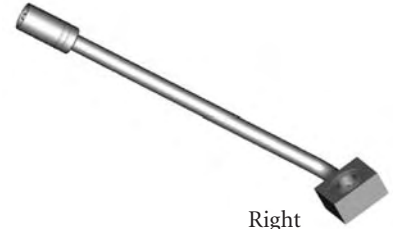
HFB143



Left

HOLE	THICK	WIDTH	ANGLE	OAL	FITS
10mm	11.8mm	22.2mm	75°	99mm	US

HFB155



Right

HOLE	THICK	WIDTH	ANGLE	OAL	FITS
3/8"	1/2"	25mm	70°	190mm	US

TUBE STYLE - LEFT/RIGHT

A = Asian

EU = European

US = United States

UNI = Universal

V = Various

BANJO FITTINGS

HFB156



Left

HOLE	THICK	WIDTH	ANGLE	OAL	FITS
3/8"	1/2"	25mm	70°	190mm	US

HFB174



Right

HOLE	THICK	WIDTH	ANGLE	OAL	FITS
3/8"	1/2"	22.2mm	90°	70mm	US

HFB175



Left

HOLE	THICK	WIDTH	ANGLE	OAL	FITS
3/8"	1/2"	22.2mm	90°	70mm	US

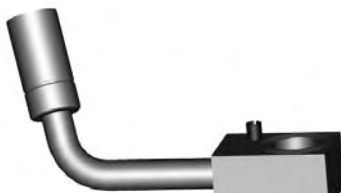
HFB176



Left

HOLE	THICK	WIDTH	ANGLE	OAL	FITS
7/16"	14.8mm	20.6mm	75°	70mm	US

HFB177



Right

HOLE	THICK	WIDTH	ANGLE	OAL	FITS
7/16"	14.8mm	20.6mm	75°	70mm	US

HFB183



Left

HOLE	THICK	WIDTH	ANGLE	OAL	FITS
10mm	11.7mm	22.2mm	70°		US

HFB184



Right

HOLE	THICK	WIDTH	ANGLE	OAL	FITS
10mm	11.7mm	22.2mm	70°		US

HFB185



Left

HOLE	THICK	WIDTH	ANGLE	OAL	FITS
3/8"	1/2"	25mm	75°	180mm	US

HFB186



Right

HOLE	THICK	WIDTH	ANGLE	OAL	FITS
3/8"	1/2"	25mm	75°	180mm	US

HFB189



Right

HOLE	THICK	WIDTH	ANGLE	OAL	FITS
7/16"	15mm	20mm	30°	90mm	US

HFB190



Left

HOLE	THICK	WIDTH	ANGLE	OAL	FITS
7/16"	15mm	20mm	30°	90mm	US

HFB201



Left

HOLE	THICK	WIDTH	ANGLE	OAL	FITS
7/16"	1/2"	22.2mm	55°	125mm	US

HFB202



Right

HOLE	THICK	WIDTH	ANGLE	OAL	FITS
7/16"	1/2"	22.2mm	55°	125mm	US

HFB209



Left

HOLE	THICK	WIDTH	ANGLE	OAL	FITS
3/8"	1/2"	23mm	90°	180mm	US

HFB210



Right

HOLE	THICK	WIDTH	ANGLE	OAL	FITS
3/8"	1/2"	23mm	90°	180mm	US

A = Asian

EU = European

US = United States

UNI = Universal

V = Various

BANJO FITTINGS

TUBE STYLE - LEFT/RIGHT

HFB306



Right

HOLE	THICK	WIDTH	ANGLE	OAL	FITS
3/8"	1/2"	26mm	70°	134mm	US

HFB307



Left

HOLE	THICK	WIDTH	ANGLE	OAL	FITS
3/8"	1/2"	26mm	70°	134mm	US

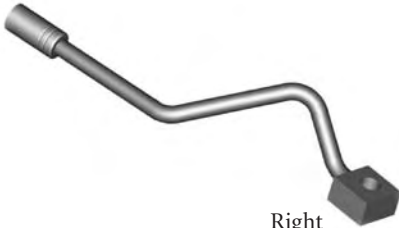
HFB315



Left

HOLE	THICK	WIDTH	ANGLE	OAL	FITS
3/8"	1/2"	22.2mm		195mm	US

HFB316



Right

HOLE	THICK	WIDTH	ANGLE	OAL	FITS
3/8"	1/2"	22.2mm		195mm	US

HFB317



Left

HOLE	THICK	WIDTH	ANGLE	OAL	FITS
3/8"	1/2"	22.2mm	65°	178mm	US

HFB318



Right

HOLE	THICK	WIDTH	ANGLE	OAL	FITS
3/8"	1/2"	22.2mm	65°	178mm	US

HFB321



Right

HOLE	THICK	WIDTH	ANGLE	OAL	FITS
3/8"	1/2"	24.4mm		105mm	US

HFB322



Left

HOLE	THICK	WIDTH	ANGLE	OAL	FITS
3/8"	1/2"	24.4mm		105mm	US

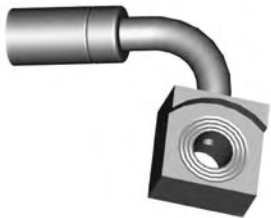
HFB323



Left

HOLE	THICK	WIDTH	ANGLE	OAL	FITS
3/8"	1/2"	23mm	90°	63mm	US

HFB324



Right

HOLE	THICK	WIDTH	ANGLE	OAL	FITS
3/8"	1/2"	23mm	90°	63mm	US

HFB328



Right

HOLE	THICK	WIDTH	ANGLE	OAL	FITS
10mm	11mm	22mm	110°	75mm	A

HFB332



Right

HOLE	THICK	WIDTH	ANGLE	OAL	FITS
10mm	11.7mm	22.2mm	90°	65mm	US

HFB333



Left

HOLE	THICK	WIDTH	ANGLE	OAL	FITS
10mm	11.7mm	22.2mm		95mm	US

HFB329



Left

HOLE	THICK	WIDTH	ANGLE	OAL	FITS
10mm	11mm	22mm	110°	75mm	A

HFB367



Left

HOLE	THICK	WIDTH	ANGLE	OAL	FITS
10mm	11mm	18mm	90°	60mm	A

A = Asian

EU = European

US = United States

UNI = Universal

V = Various

BANJO FITTINGS

TUBE STYLE - LEFT/RIGHT

HFB368



Right

HOLE	THICK	WIDTH	ANGLE	OAL	FITS
10mm	11mm	18mm	90°	60mm	A

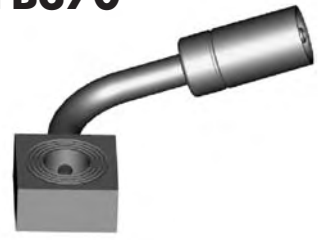
HFB369



Left

HOLE	THICK	WIDTH	ANGLE	OAL	FITS
10mm	11mm	22mm	90°	60mm	A

HFB370



Right

HOLE	THICK	WIDTH	ANGLE	OAL	FITS
10mm	11mm	22mm	90°	60mm	A

HFB380



Left

HOLE	THICK	WIDTH	ANGLE	OAL	FITS
3/8"	7/16"	25.4mm	60°	165mm	US

HFB381



Right

HOLE	THICK	WIDTH	ANGLE	OAL	FITS
3/8"	7/16"	25.4mm	60°	165mm	US

A = Asian

EU = European

US = United States

UNI = Universal

V = Various

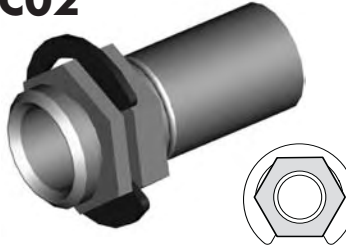
CENTER SUPPORT FITTINGS

HFC01



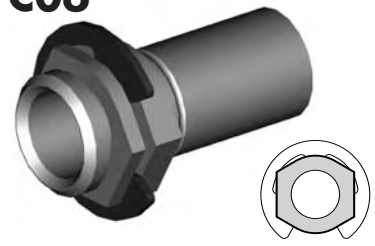
MATERIAL	WIDTH	OAL	FITS
Steel	17mm	33mm	A

HFC02



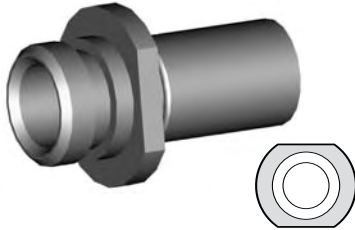
MATERIAL	WIDTH	OAL	FITS
Steel	17mm	34mm	A

HFC06



MATERIAL	WIDTH	OAL	FITS
Steel	17mm	34mm	A

HFC07



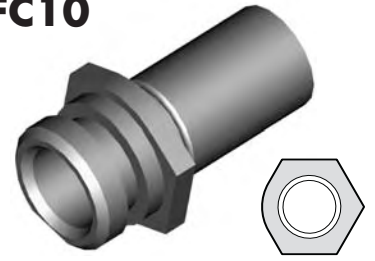
MATERIAL	WIDTH	OAL	FITS
Steel	19mm	35mm	A

HFC09



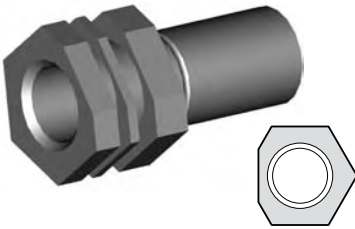
MATERIAL	WIDTH	OAL	FITS
Steel	17mm	34mm	A

HFC10



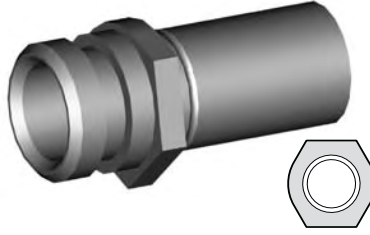
MATERIAL	WIDTH	OAL	FITS
Steel	19mm	35mm	A

HFC11



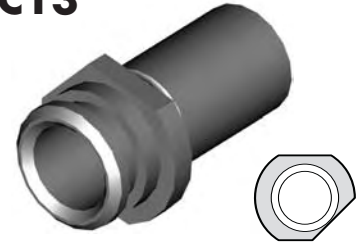
MATERIAL	WIDTH	OAL	FITS
Steel	19mm	37mm	A

HFC12



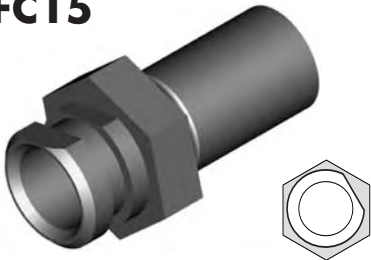
MATERIAL	WIDTH	OAL	FITS
Steel	17mm	35mm	A

HFC13



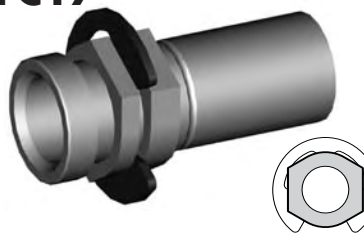
MATERIAL	WIDTH	OAL	FITS
Steel	17mm	33mm	A

HFC15



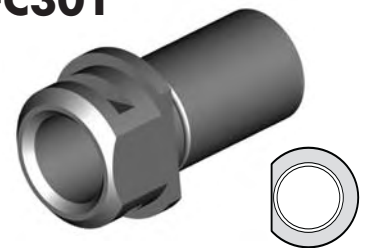
MATERIAL	WIDTH	OAL	FITS
Steel	19mm	37mm	A

HFC17



MATERIAL	WIDTH	OAL	FITS
Steel	16mm	37mm	US

HFC301



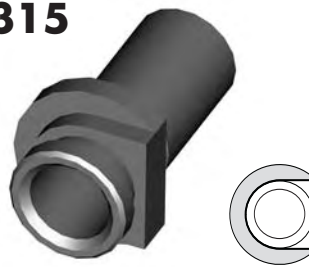
MATERIAL	WIDTH	OAL	FITS
Steel	20mm	33mm	EU

HFC307



MATERIAL	WIDTH	OAL	FITS
Steel	19mm	36mm	US

HFC315



MATERIAL	WIDTH	OAL	FITS
Steel	22mm	34mm	A

CLIP MOUNT

CENTER SUPPORT FITTINGS

BRACKET MOUNT

HFC04



MATERIAL	WIDTH	OAL	FITS
Steel	39mm	30mm	A

HFC05



MATERIAL	WIDTH	OAL	FITS
Steel	20mm	30mm	A

HFC14



MATERIAL	WIDTH	OAL	FITS
Steel	33mm	80mm	US

HFC316



MATERIAL	WIDTH	OAL	FITS
Steel	22mm	36mm	A

IMPERIAL FEMALE FITTINGS

HFIF01



THREAD	SEAT	MOUNT	HEX	OAL	FITS
3/8NF	Inverted	Clip	19mm	38mm	V

HFIF01B



Brass

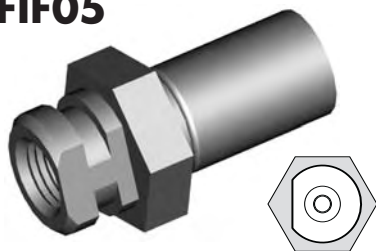
THREAD	SEAT	MOUNT	HEX	OAL	FITS
3/8NF	Inverted	Clip	17mm	38mm	V

HFIF02



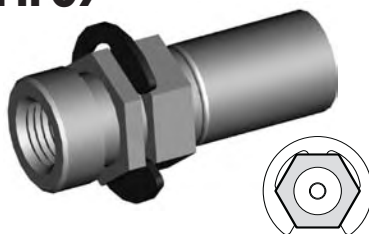
THREAD	SEAT	MOUNT	HEX	OAL	FITS
7/16NS	Inverted	Clip	19mm	38mm	V

HFIF05



THREAD	SEAT	MOUNT	HEX	OAL	FITS
3/8NF	Inverted	Clip	19mm	38mm	V

HFIF07



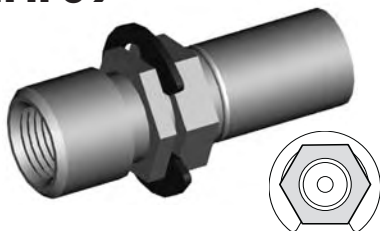
THREAD	SEAT	MOUNT	HEX	OAL	FITS
3/8NF	Inverted	Clip	16mm	41mm	US

HFIF08



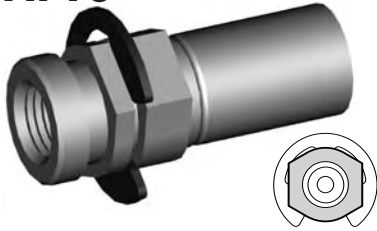
THREAD	SEAT	MOUNT	HEX	OAL	FITS
3/8NF	Inverted	Clip	16mm	41mm	US

HFIF09



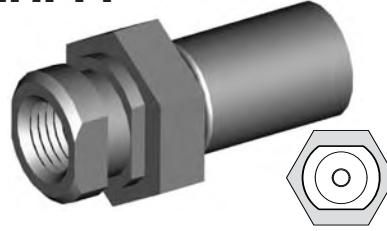
THREAD	SEAT	MOUNT	HEX	OAL	FITS
7/16NS	Inverted	Clip	16mm	45mm	US

HFIF10



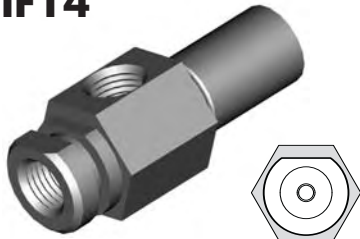
THREAD	SEAT	MOUNT	HEX	OAL	FITS
3/8NF	Inverted	Clip	16mm	39mm	US

HFIF11



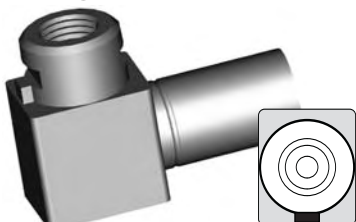
THREAD	SEAT	MOUNT	HEX	OAL	FITS
3/8NF	Inverted	Clip	19mm	38mm	V

HFIF14



THREAD	SEAT	MOUNT	HEX	OAL	FITS
3/8NF x 2	Inverted	Clip	19mm	50mm	US

HFIF18



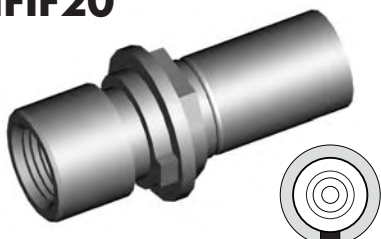
THREAD	SEAT	MOUNT	HEX	OAL	FITS
3/8NF	Inverted	Clip		41mm	US

HFIF19



THREAD	SEAT	MOUNT	HEX	OAL	FITS
3/8NF	Inverted	Clip	16mm	38mm	US

HFIF20



THREAD	SEAT	MOUNT	HEX	OAL	FITS
7/16NS	Inverted	Clip	16mm	44mm	US

HFIF21



THREAD	SEAT	MOUNT	HEX	OAL	FITS
3/8NF	DPS	Clip	16mm	37mm	US

HFIF24



THREAD	SEAT	MOUNT	HEX	OAL	FITS
7/16NS	Inverted	Clip	16mm	40mm	US

CLIP MOUNT

A = Asian

EU = European

US = United States

UNI = Universal

V = Various

IMPERIAL FEMALE FITTINGS

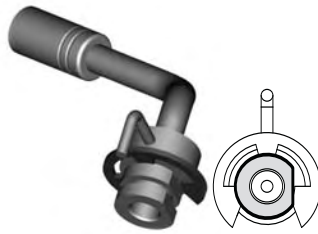
CLIP MOUNT

HFIF26



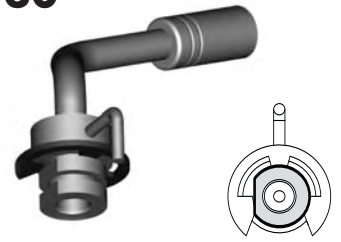
THREAD	SEAT	MOUNT	HEX	OAL	FITS
3/8NF	Inverted	Clip	16mm	40mm	US

HFIF29



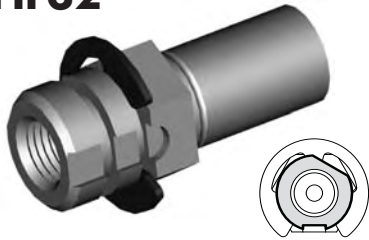
THREAD	SEAT	MOUNT	HEX	OAL	FITS
3/8NF	Inverted	Clip		78mm	US

HFIF30



THREAD	SEAT	MOUNT	HEX	OAL	FITS
3/8NF	Inverted	Clip		78mm	US

HFIF32



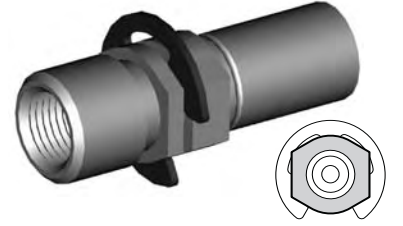
THREAD	SEAT	MOUNT	HEX	OAL	FITS
3/8NF	Inverted	Clip	17mm	41mm	US

HFIF33



THREAD	SEAT	MOUNT	HEX	OAL	FITS
7/16NS	Inverted	Clip	17mm	41mm	US

HFIF35



THREAD	SEAT	MOUNT	HEX	OAL	FITS
7/16NS	Inverted	Clip	16mm	46mm	US

HFIF36



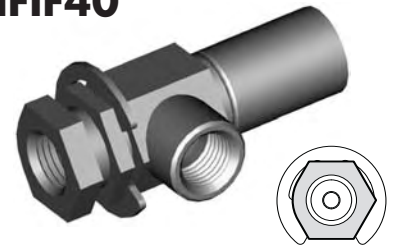
THREAD	SEAT	MOUNT	HEX	OAL	FITS
3/8NF	Inverted	Clip	16mm	39mm	US

HFIF38



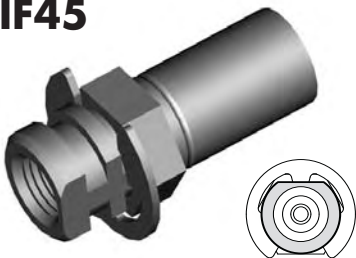
THREAD	SEAT	MOUNT	HEX	OAL	FITS
3/8NF	Inverted	Clip	17mm	40mm	US

HFIF40



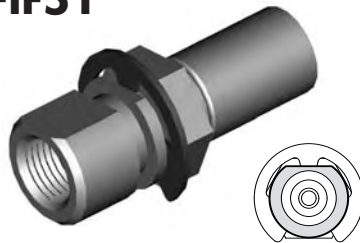
THREAD	SEAT	MOUNT	HEX	OAL	FITS
3/8NF x 2	Inverted	Clip	16mm	48mm	US

HFIF45



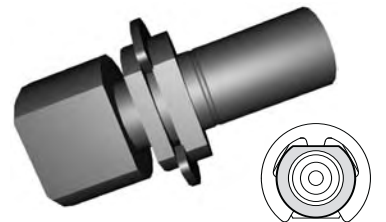
THREAD	SEAT	MOUNT	HEX	OAL	FITS
3/8NF	Inverted	Clip	16mm	39mm	US

HFIF51



THREAD	SEAT	MOUNT	HEX	OAL	FITS
7/16NS	Inverted	Clip	17mm	46mm	US

HFIF63



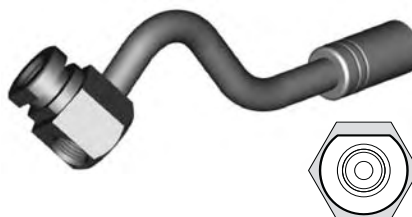
THREAD	SEAT	MOUNT	HEX	OAL	FITS
1/2NF	Inverted	Clip		47mm	US

HFIF64



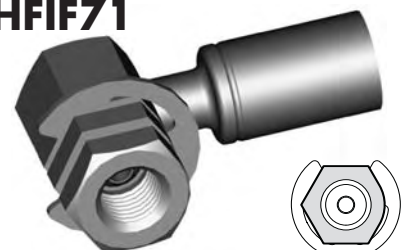
THREAD	SEAT	MOUNT	HEX	OAL	FITS
3/8NF x 2	Inverted	Clip	19mm	137mm	US

HFIF65



THREAD	SEAT	MOUNT	HEX	OAL	FITS
3/8NF x 2	Inverted	Clip	19mm	137mm	US

HFIF71



THREAD	SEAT	MOUNT	HEX	OAL	FITS
3/8NF	Inverted	Clip	16mm	45mm	US

A = Asian

EU = European

US = United States

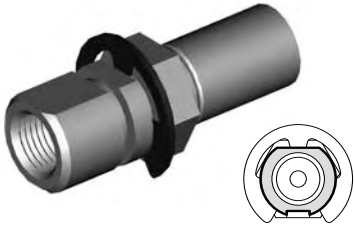
UNI = Universal

V = Various

IMPERIAL FEMALE FITTINGS

CLIP MOUNT

HFIF72



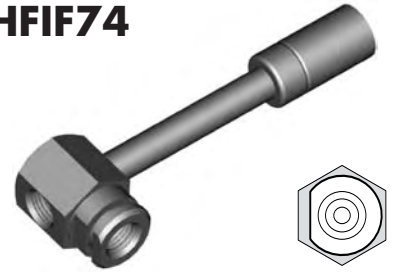
THREAD	SEAT	MOUNT	HEX	OAL	FITS
3/8NF	Inverted	Clip	17mm	47mm	US

HFIF73



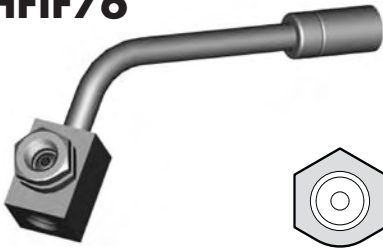
THREAD	SEAT	MOUNT	HEX	OAL	FITS
7/16NS	Inverted	Clip	17mm	47mm	US

HFIF74



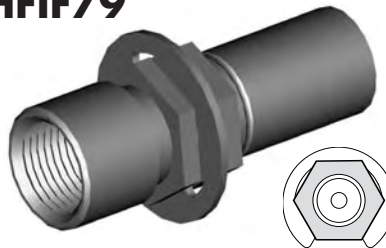
THREAD	SEAT	MOUNT	HEX	OAL	FITS
3/8NF x 2	Inverted	Clip	19mm	92mm	US

HFIF76



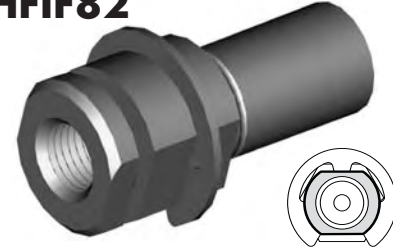
THREAD	SEAT	MOUNT	HEX	OAL	FITS
3/8NF x 2	Inverted	Clip	16mm	90mm	US

HFIF79



THREAD	SEAT	MOUNT	HEX	OAL	FITS
1/2NF	Inverted	Clip	16mm	45mm	US

HFIF82



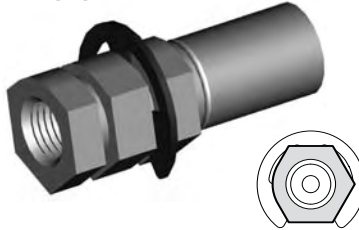
THREAD	SEAT	MOUNT	HEX	OAL	FITS
3/8NF	Inverted	Clip		40mm	US

HFIF83



THREAD	SEAT	MOUNT	HEX	OAL	FITS
3/8NF	Inverted	Clip	16mm	55mm	US

HFIF301



THREAD	SEAT	MOUNT	HEX	OAL	FITS
3/8NF	Inverted	Clip	16mm	43mm	US

A = Asian

EU = European

US = United States

UNI = Universal

V = Various

IMPERIAL FEMALE FITTINGS

BOLT ON MOUNT

HFIF23



12mm Hole

THREAD	SEAT	MOUNT	HOLE	OAL	FITS
3/8NF x 2	Inverted	Bolted	12mm	65mm	US

HFIF25



10mm Hole

THREAD	SEAT	MOUNT	HOLE	OAL	FITS
3/8NF x 2	Inverted	Bolted	10mm	49mm	US

HFIF27



11.8mm Hole

THREAD	SEAT	MOUNT	HOLE	OAL	FITS
3/8NF x 2	Inverted	Bolted	11.8mm	70mm	US

HFIF28



11.8mm Hole

THREAD	SEAT	MOUNT	HOLE	OAL	FITS
3/8NF-7/16NS	Inverted	Bolted	11.8mm	52mm	US

HFIF31



12mm Hole

THREAD	SEAT	MOUNT	HOLE	OAL	FITS
3/8NF-7/16NS	Inverted	Bolted	12mm	52mm	US

HFIF34



8/10mm Hole

THREAD	SEAT	MOUNT	HOLE	OAL	FITS
3/8NF x 2	Inverted	Bolted	8/10mm	49mm	US

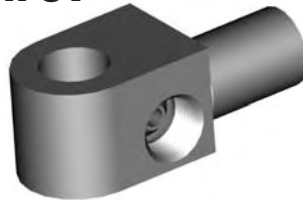
HFIF37



12mm Hole

THREAD	SEAT	MOUNT	HOLE	OAL	FITS
3/8NF x 2	Inverted	Bolted	12mm	53mm	US

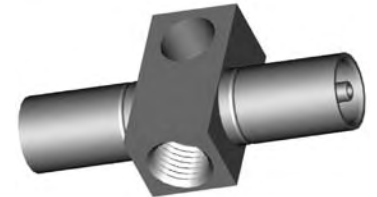
HFIF39



11.8mm Hole

THREAD	SEAT	MOUNT	HOLE	OAL	FITS
3/8NF-7/16NS	Inverted	Bolted	11.8mm	52mm	US

HFIF46



10mm Hole

THREAD	SEAT	MOUNT	HOLE	OAL	FITS
7/16NS	Inverted	Bolted	10mm	60mm	US

HFIF47



12mm Hole

THREAD	SEAT	MOUNT	HOLE	OAL	FITS
3/8NF x 2	Inverted	Bolted	12mm	50mm	US

HFIF48



11.5mm Hole

THREAD	SEAT	MOUNT	HOLE	OAL	FITS
3/8NF-7/16NS	Inverted	Bolted	11.5mm	53mm	US

HFIF53



11.8mm Hole

THREAD	SEAT	MOUNT	HOLE	OAL	FITS
3/8NF x 2	Inverted	Bolted	11.8mm	53mm	US

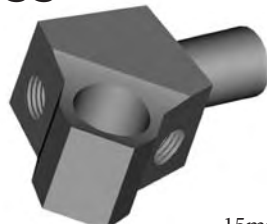
HFIF54



12mm Hole

THREAD	SEAT	MOUNT	HOLE	OAL	FITS
7/16NS	Inverted	Bolted	12mm	51mm	US

HFIF55



15mm Hole

THREAD	SEAT	MOUNT	HOLE	OAL	FITS
3/8NF x 2	Inverted	Bolted	15mm	58mm	US

HFIF56



11.8mm Hole

THREAD	SEAT	MOUNT	HOLE	OAL	FITS
3/8NF x 2	Inverted	Bolted	11.8	55mm	US

A = Asian

EU = European

US = United States

UNI = Universal

V = Various

IMPERIAL FEMALE FITTINGS

BOLT ON MOUNT

HFIF57



8/10mm Hole

THREAD	SEAT	MOUNT	HOLE	OAL	FITS
7/16NS x 2	Inverted	Bolted	8/10mm	54mm	US

HFIF58



11.5mm Hole

THREAD	SEAT	MOUNT	HOLE	OAL	FITS
3/8NF x 2	Inverted	Bolted	11.5mm	50mm	US

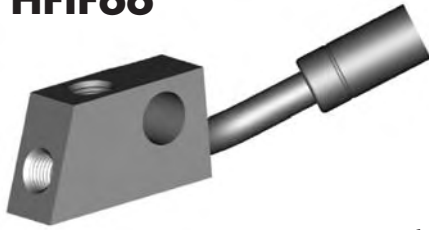
HFIF59



12mm Hole

THREAD	SEAT	MOUNT	HOLE	OAL	FITS
3/8NF x 2	Inverted	Bolted	12mm	100mm	US

HFIF66



12mm Hole

THREAD	SEAT	MOUNT	HOLE	OAL	FITS
3/8NF x 2	Inverted	Bolted	12mm	93mm	US

HFIF303



11.4mm Hole

THREAD	SEAT	MOUNT	HOLE	OAL	FITS
3/8NF-7/16NS	Inverted	Bolted	7/16"	70mm	US

NO MOUNT

HFIF03



THREAD	SEAT	MOUNT	HEX	OAL	FITS
1/2NF	DPS		19mm	50mm	US

HFIF06



THREAD	SEAT	MOUNT	HEX	OAL	FITS
1/2NF	Inverted		17mm	38mm	UNI

A = Asian

EU = European

US = United States

UNI = Universal

V = Various

IMPERIAL FEMALE FITTINGS

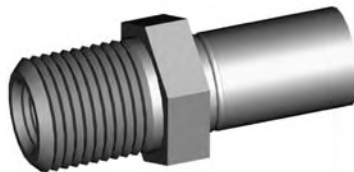
HFIFX01



5/8NF External Thread

THREAD	SEAT	MOUNT	HEX	OAL	FITS
7/16NS	Inverted	Bulkhead	19mm	45mm	V

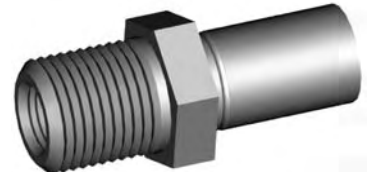
HFIFX02



5/8NF External Thread

THREAD	SEAT	MOUNT	HEX	OAL	FITS
3/8NF	Inverted	Bulkhead	19mm	45mm	V

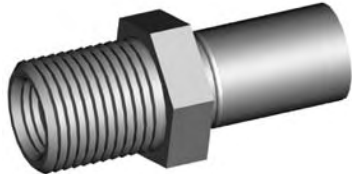
HFIFX03



5/8NF External Thread

THREAD	SEAT	MOUNT	HEX	OAL	FITS
3/8BSF	Inverted	Bulkhead	19mm	45mm	V

HFIFX04



5/8NF External Thread

THREAD	SEAT	MOUNT	HEX	OAL	FITS
7/16NF	Inverted	Bulkhead	19mm	45mm	V

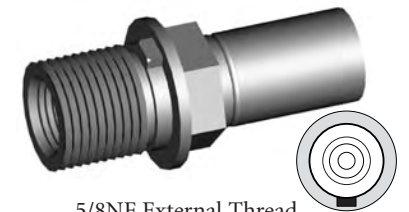
HFIFX05



5/8NF External Thread

THREAD	SEAT	MOUNT	HEX	OAL	FITS
3/8NF	DPS	Bulkhead	19mm	45mm	V

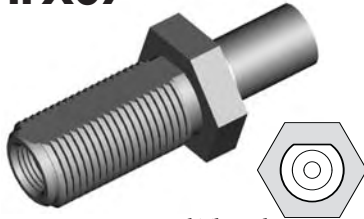
HFIFX06



5/8NF External Thread

THREAD	SEAT	MOUNT	HEX	OAL	FITS
7/16NS	Inverted	Bulkhead	16mm	46mm	US

HFIFX07



3/4NF External Thread

THREAD	SEAT	MOUNT	HEX	OAL	FITS
7/16NS	Inverted	Bulkhead	25mm	65mm	US

HFIFX08



3/4NF External Thread

THREAD	SEAT	MOUNT	HEX	OAL	FITS
7/16NS	Inverted	Bulkhead	25mm	135mm	US

HFIFX09



11/16NS External Thread

THREAD	SEAT	MOUNT	HEX	OAL	FITS
1/2NF	Inverted	Bulkhead	22mm	46mm	US

HFIFX10



5/8NF External Thread

THREAD	SEAT	MOUNT	HEX	OAL	FITS
3/8NF	Inverted	Bulkhead	22mm	117mm	US

HFIFX11



5/8NF External Thread

THREAD	SEAT	MOUNT	HEX	OAL	FITS
3/8NF	Inverted	Bulkhead	19mm	48mm	US

HFIFX12



5/8NF External Thread

THREAD	SEAT	MOUNT	HEX	OAL	FITS
7/16NS	Inverted	Bulkhead	22mm	54mm	US

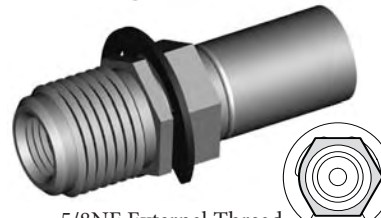
HFIFX14



3/4NF External Thread

THREAD	SEAT	MOUNT	HEX	OAL	FITS
3/8NF	Inverted	Bulkhead	22mm	45mm	US

HFIFX15



5/8NF External Thread

THREAD	SEAT	MOUNT	HEX	OAL	FITS
3/8NF	Inverted	Bulkhead	16mm	47mm	US

HFIFX16



3/4NF External Thread

THREAD	SEAT	MOUNT	HEX	OAL	FITS
7/16NS	Inverted	Bulkhead	22mm	45mm	US

BULKHEAD MOUNT

A = Asian

EU = European

US = United States

UNI = Universal

V = Various

IMPERIAL FEMALE FITTINGS

BULKHEAD MOUNT

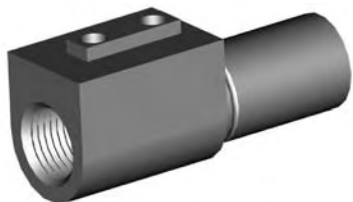
HFIF69



7/8" x 18NS External Thread

THREAD	SEAT	MOUNT	HEX	OAL	FITS
7/16NS x 2	Inverted	Bulkhead	25mm	80mm	US

HFIF15



THREAD	SEAT	MOUNT	HEX	OAL	FITS
3/8NF	Inverted	Bracket		46mm	US

HFIF22



THREAD	SEAT	MOUNT	HEX	OAL	FITS
3/8NF x 2	Inverted	Bracket		41mm	US

HFIF41



THREAD	SEAT	MOUNT	HEX	OAL	FITS
3/8NF	Inverted	Bracket		50mm	US

BRACKET MOUNT

HFIF42



THREAD	SEAT	MOUNT	HEX	OAL	FITS
3/8NF	Inverted	Bracket		50mm	US

HFIF52



THREAD	SEAT	MOUNT	HEX	OAL	FITS
7/16NS	Inverted	Bracket		46mm	US

HFIF60



THREAD	SEAT	MOUNT	HEX	OAL	FITS
3/8NF x 2	Inverted	Bracket		102mm	US

HFIF70



THREAD	SEAT	MOUNT	HEX	OAL	FITS
3/8NF x 2	Inverted	Bracket		48mm	US

HFIF304



THREAD	SEAT	MOUNT	HEX	OAL	FITS
3/8NF x 2	Inverted	Bracket		51mm	US

HFIF306



THREAD	SEAT	MOUNT	HEX	OAL	FITS
3/8NF	Inverted	Bracket		58mm	US

HFIF44



THREAD	SEAT	MOUNT	HEX	OAL	FITS
3/8NF x 2	Inverted	Bracket		50mm	US

HFIF81



THREAD	SEAT	MOUNT	HEX	OAL	FITS
3/8NF	Inverted	Bracket		38mm	US

A = Asian

EU = European

US = United States

UNI = Universal

V = Various

IMPERIAL MALE FITTINGS

STANDARD MOUNT

HFIM01



THREAD	THREAD LENGTH	HEX	OAL	FITS
3/8NF	12.5mm	16mm	40mm	V

HFIM01B



Brass

THREAD	THREAD LENGTH	HEX	OAL	FITS
3/8NF	12.5mm	14mm	40mm	V

HFIM03



THREAD	THREAD LENGTH	HEX	OAL	FITS
7/16NF	12mm	16mm	40mm	V

HFIM04



THREAD	THREAD LENGTH	HEX	OAL	FITS
11/16NF	20mm	19mm	50mm	V

HFIM08



THREAD	THREAD LENGTH	HEX	OAL	FITS
1/2NF	15.5mm	17mm	43mm	V

HFIM09



THREAD	THREAD LENGTH	HEX	OAL	FITS
7/16NF	13.5mm	16mm	69mm	US

HFIM10



THREAD	THREAD LENGTH	HEX	OAL	FITS
3/8NF	12.5mm	16mm	44mm	V

HFIM11



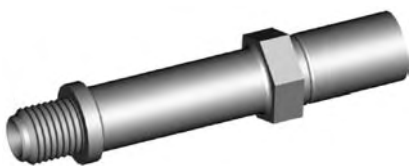
THREAD	THREAD LENGTH	HEX	OAL	FITS
3/8NF	13mm	16mm	68mm	V

HFIM13



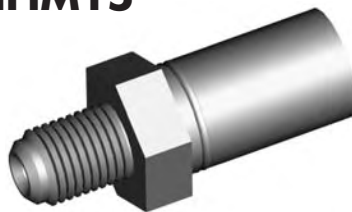
THREAD	THREAD LENGTH	HEX	OAL	FITS
7/16NS	12mm	16mm	40mm	V

HFIM14



THREAD	THREAD LENGTH	HEX	OAL	FITS
7/16NS	12mm	16mm	78mm	US

HFIM15



THREAD	THREAD LENGTH	HEX	OAL	FITS
3/8BSF	12.5mm	16mm	40mm	EU

HFIM16



THREAD	THREAD LENGTH	HEX	OAL	FITS
7/16NF	13mm	17mm	61mm	US

HFIM18



THREAD	THREAD LENGTH	HEX	OAL	FITS
3/8NF	12mm	16mm	53mm	US

HFIM19



THREAD	THREAD LENGTH	HEX	OAL	FITS
1/8NPT	12mm	14mm	40mm	V

HFIM21



THREAD	THREAD LENGTH	HEX	OAL	FITS
3/8NF	12.5mm	16mm	53mm	V

A = Asian

EU = European

US = United States

UNI = Universal

V = Various

IMPERIAL MALE FITTINGS

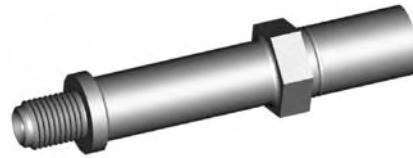
STANDARD MOUNT

HFIM24



THREAD	THREAD LENGTH	HEX	OAL	FITS
1/2NF	12mm	16mm	44mm	US

HFIM25



THREAD	THREAD LENGTH	HEX	OAL	FITS
3/8NF	12mm	16mm	78mm	US

HFIM26



THREAD	THREAD LENGTH	HEX	OAL	FITS
7/16NS	13.5mm	16mm	78mm	US

HFIM27



THREAD	THREAD LENGTH	HEX	OAL	FITS
7/16NF	13mm	16mm	63mm	US

BULKHEAD MOUNT

HFIM02



THREAD	THREAD LENGTH	HEX	OAL	FITS
3/8NF	24mm	16mm	52mm	V

HFIM05



THREAD	THREAD LENGTH	HEX	OAL	FITS
3/8NF-1/2NF	26.5mm	16mm	55mm	EU

HFIM06



THREAD	THREAD LENGTH	HEX	OAL	FITS
7/16NF	28.5mm	17mm	56mm	V

HFIM07



THREAD	THREAD LENGTH	HEX	OAL	FITS
1/2NF	32mm	19mm	60mm	V

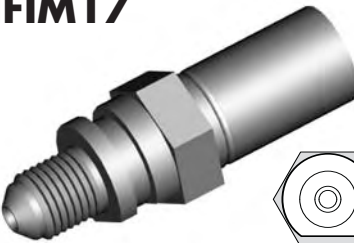
HFIM12



THREAD	THREAD LENGTH	HEX	OAL	FITS
3/8NF	24mm	16mm	75mm	EU

CLIP MOUNT

HFIM17



THREAD	THREAD LENGTH	HEX	OAL	FITS
3/8NF	12mm	16mm	49mm	US

HFIM22



THREAD	THREAD LENGTH	HEX	OAL	FITS
7/16NF	13mm	16mm	51mm	US

A = Asian

EU = European

US = United States

UNI = Universal

V = Various

IMPERIAL MALE FITTINGS

HOSE JOINER

HFIM28



No. 3 JIC

THREAD	THREAD LENGTH	HEX	OAL	FITS
3/8NF	14mm	14mm	42mm	UNI

HFIM29



No. 4 JIC

THREAD	THREAD LENGTH	HEX	OAL	FITS
7/16NF	15mm	14mm	43mm	UNI

A = Asian

EU = European

US = United States

UNI = Universal

V = Various

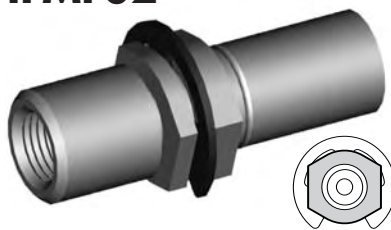
METRIC FEMALE FITTINGS

HFMF01



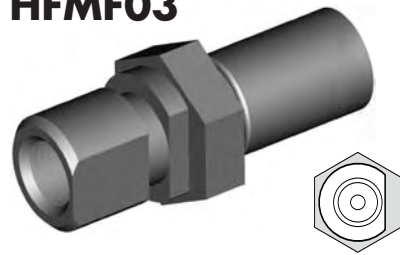
THREAD	SEAT	MOUNT	HEX	OAL	FITS
M10 x 1	Inverted	Clip	17mm	38mm	V

HFMF02



THREAD	SEAT	MOUNT	HEX	OAL	FITS
M10 x 1	Inverted	Clip	17mm	47mm	A

HFMF03



THREAD	SEAT	MOUNT	HEX	OAL	FITS
M10 x 1	DPS	Clip	19mm	46mm	A

HFMF04



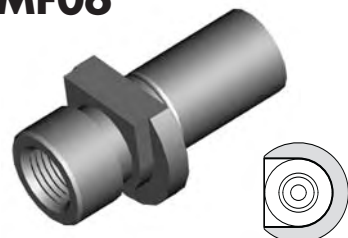
THREAD	SEAT	MOUNT	HEX	OAL	FITS
M10 x 1	Inverted	Clip	17mm	38mm	A

HFMF05



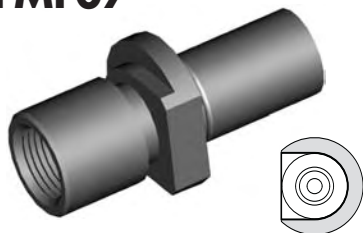
THREAD	SEAT	MOUNT	HEX	OAL	FITS
M10 x 1	DPS	Clip	14mm	38mm	EU

HFMF06



THREAD	SEAT	MOUNT	HEX	OAL	FITS
M10 x 1	Inverted	Clip		39mm	A

HFMF07



THREAD	SEAT	MOUNT	HEX	OAL	FITS
M12 x 1	Inverted	Clip		45mm	A

HFMF08



THREAD	SEAT	MOUNT	HEX	OAL	FITS
M10 x 1	DPS	Clip	17mm	41mm	V

HFMF09



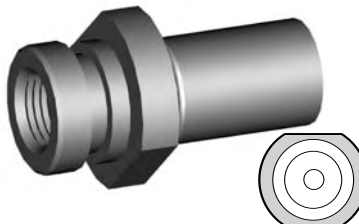
THREAD	SEAT	MOUNT	HEX	OAL	FITS
M10 x 1.25	Inverted	Clip	17mm	37mm	V

HFMF10



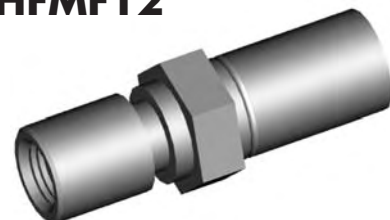
THREAD	SEAT	MOUNT	HEX	OAL	FITS
M12 x 1	Inverted	Clip	19mm	46mm	A

HFMF11



THREAD	SEAT	MOUNT	HEX	OAL	FITS
M10 x 1	Inverted	Clip	19mm	37mm	A

HFMF12



THREAD	SEAT	MOUNT	HEX	OAL	FITS
M9 x 1	Inverted	Clip	16mm	47mm	A

HFMF13



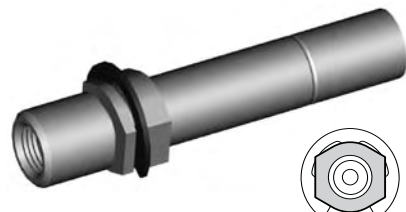
THREAD	SEAT	MOUNT	HEX	OAL	FITS
M10 x 1	Inverted	Clip		38mm	A

HFMF14



THREAD	SEAT	MOUNT	HEX	OAL	FITS
M10 x 1	Inverted	Clip	17mm	45mm	A

HFMF15



THREAD	SEAT	MOUNT	HEX	OAL	FITS
M10 x 1	Inverted	Clip	17mm	77mm	A

CLIP MOUNT

A = Asian

EU = European

US = United States

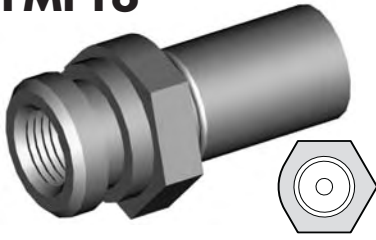
UNI = Universal

V = Various

METRIC FEMALE FITTINGS

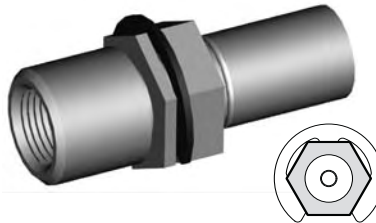
CLIP MOUNT

HFMF16



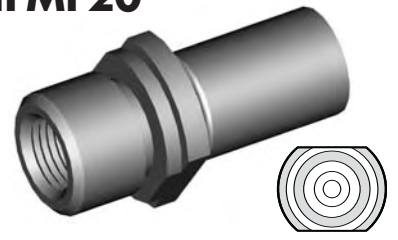
THREAD	SEAT	MOUNT	HEX	OAL	FITS
M10 x 1	Inverted	Clip	19mm	37mm	V

HFMF19



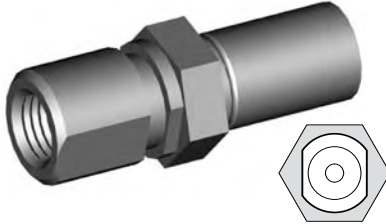
THREAD	SEAT	MOUNT	HEX	OAL	FITS
M12 x 1	Inverted	Clip	19mm	47mm	A

HFMF20



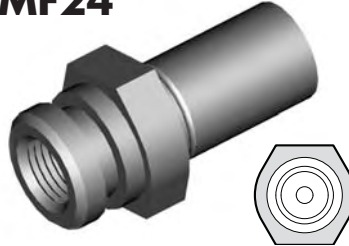
THREAD	SEAT	MOUNT	HEX	OAL	FITS
M10 x 1	Inverted	Clip	17mm	38mm	A

HFMF21



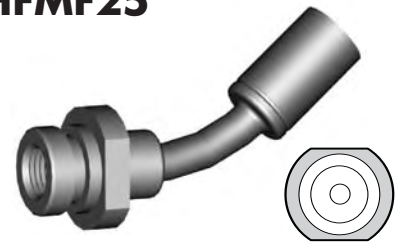
THREAD	SEAT	MOUNT	HEX	OAL	FITS
M10 x 1.25	DPS	Clip	17mm	47mm	EU

HFMF24



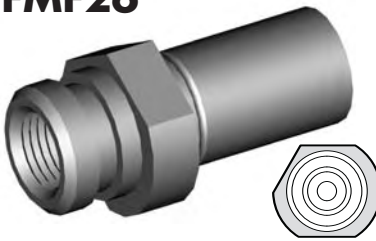
THREAD	SEAT	MOUNT	HEX	OAL	FITS
M10 x 1	DPS	Clip	19mm	38mm	V

HFMF25



THREAD	SEAT	MOUNT	HEX	OAL	FITS
M10 x 1	Inverted	Clip	19mm	70mm	A

HFMF26



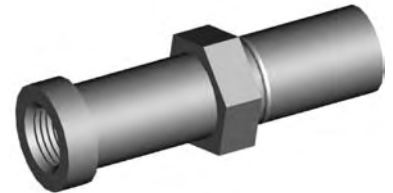
THREAD	SEAT	MOUNT	HEX	OAL	FITS
M10 x 1	Inverted	Clip	17mm	38mm	A

HFMF28



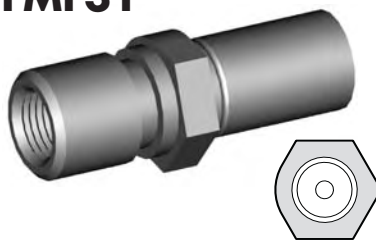
THREAD	SEAT	MOUNT	HEX	OAL	FITS
M10 x 1	Inverted	Clip	17mm	37mm	V

HFMF29



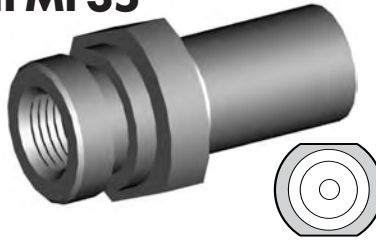
THREAD	SEAT	MOUNT	HEX	OAL	FITS
M10 x 1	Inverted		17mm	54mm	A

HFMF31



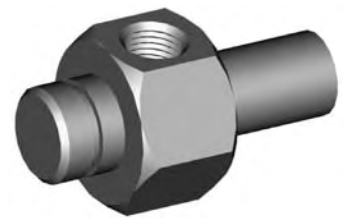
THREAD	SEAT	MOUNT	HEX	OAL	FITS
M10 x 1	Inverted	Clip	17mm	45mm	V

HFMF35



THREAD	SEAT	MOUNT	HEX	OAL	FITS
M10 x 1	DPS	Clip	19mm	37mm	A

HFMF36



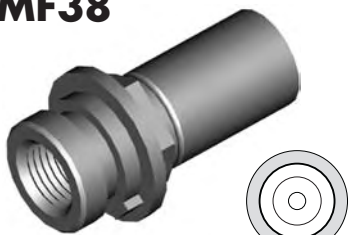
THREAD	SEAT	MOUNT	HEX	OAL	FITS
M10x1-(2)	Inverted	Clip	26mm	50mm	A

HFMF37



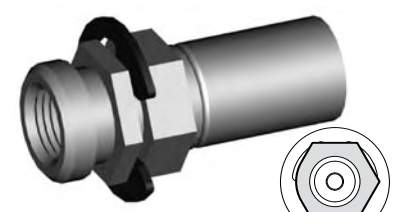
THREAD	SEAT	MOUNT	HEX	OAL	FITS
M10x1-(2)	Inverted	Clip	26mm	50mm	A

HFMF38



THREAD	SEAT	MOUNT	HEX	OAL	FITS
M10 x 1	DPS	Clip	16mm	37mm	US

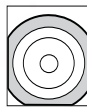
HFMF39



THREAD	SEAT	MOUNT	HEX	OAL	FITS
M10 x 1	DPS	Clip	16mm	39mm	US

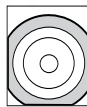
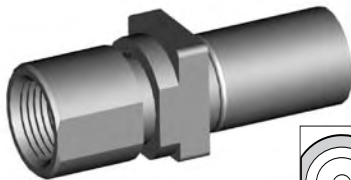
METRIC FEMALE FITTINGS

HFMF42



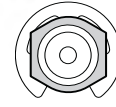
THREAD	SEAT	MOUNT	HEX	OAL	FITS
M12 x 1	Inverted	Clip		57mm	US

HFMF43



THREAD	SEAT	MOUNT	HEX	OAL	FITS
M12 x 1	Inverted	Clip		45mm	US

HFMF51



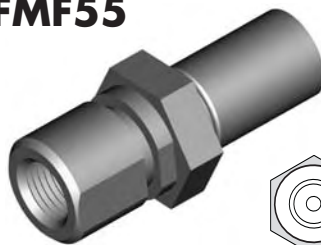
THREAD	SEAT	MOUNT	HEX	OAL	FITS
M12 x 1	DPS	Clip	16mm	47mm	US

HFMF54



THREAD	SEAT	MOUNT	HEX	OAL	FITS
M10 x 1	DPS	Clip	15.5mm	37mm	EU

HFMF55



THREAD	SEAT	MOUNT	HEX	OAL	FITS
M10 x 1	DPS	Clip	19mm	46mm	V

HFMF56



THREAD	SEAT	MOUNT	HEX	OAL	FITS
M10 x 1.25	DPS	Clip	14mm	45mm	EU

HFMF57



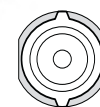
THREAD	SEAT	MOUNT	HEX	OAL	FITS
M12 x 1.25	DPS	Clip	19mm	46mm	EU

HFMF58



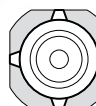
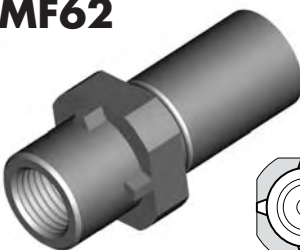
THREAD	SEAT	MOUNT	HEX	OAL	FITS
M10 x 1	DPS	Clip	17mm	54mm	V

HFMF59



THREAD	SEAT	MOUNT	HEX	OAL	FITS
M10 x 1	DPS	Clip	17mm	38mm	EU

HFMF62



THREAD	SEAT	MOUNT	HEX	OAL	FITS
M10 x 1	DPS	Clip	17mm	39mm	EU

HFMF63



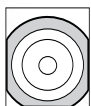
THREAD	SEAT	MOUNT	HEX	OAL	FITS
M10 x 1	DPS	Clip	17mm	39mm	EU

HFMF65



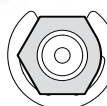
THREAD	SEAT	MOUNT	HEX	OAL	FITS
M10 x 1	DPS	Clip	17mm	39mm	A

HFMF66



THREAD	SEAT	MOUNT	HEX	OAL	FITS
M10 x 1	Inverted	Clip		36mm	US

HFMF67



THREAD	SEAT	MOUNT	HEX	OAL	FITS
M10 x 1	DPS	Clip	16mm	46mm	US

HFMF68



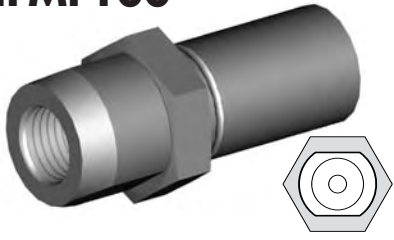
THREAD	SEAT	MOUNT	HEX	OAL	FITS
M10 x 1	Inverted	Clip	16mm	37mm	US

CLIP MOUNT

METRIC FEMALE FITTINGS

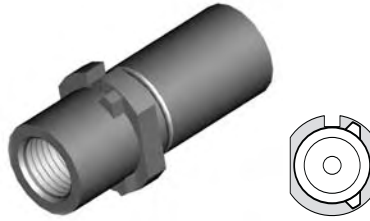
CLIP MOUNT

HFMF100



THREAD	SEAT	MOUNT	HEX	OAL	FITS
M10 x 1	DPS	Clip	17mm	39mm	EU

HFMF305



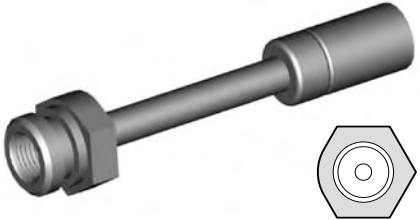
THREAD	SEAT	MOUNT	HEX	OAL	FITS
M10 x 1	DPS	Clip	15mm	37mm	EU

HFMF307



THREAD	SEAT	MOUNT	HEX	OAL	FITS
M10 x 1	Inverted	Clip	17mm	46mm	A

HFMF308



THREAD	SEAT	MOUNT	HEX	OAL	FITS
M10 x 1	Inverted	Clip	19mm	89mm	A

HFMF315



THREAD	SEAT	MOUNT	HEX	OAL	FITS
M10 x 1	DPS	Clip	17mm	36mm	A

HFMF316



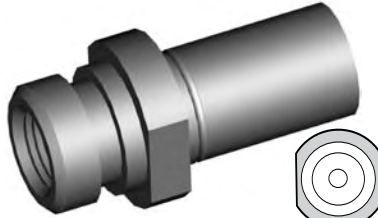
THREAD	SEAT	MOUNT	HEX	OAL	FITS
M10 x 1	DPS	Clip	17mm	36mm	A

HFMF327



THREAD	SEAT	MOUNT	HEX	OAL	FITS
M10 x 1	DPS	Clip		39mm	A

HFMF329



THREAD	SEAT	MOUNT	HEX	OAL	FITS
M10 x 1	DPS	Clip	17mm	38mm	A

HFMF333



THREAD	SEAT	MOUNT	HEX	OAL	FITS
M10 x 1	Inverted	Clip	17mm	41mm	A

HFMF340



THREAD	SEAT	MOUNT	HEX	OAL	FITS
M10 x 1	DPS	Clip	15mm	37mm	EU

A = Asian

EU = European

US = United States

UNI = Universal

V = Various

METRIC FEMALE FITTINGS

HFMF18



8.5mm Hole

THREAD	SEAT	MOUNT	HOLE	OAL	FITS
M10x1-(2)	Inverted	Bolted	8.5mm	55mm	A

HFMF30



8.5mm Hole

THREAD	SEAT	MOUNT	HOLE	OAL	FITS
M12x1-10xl	Inverted	Bolted	8.5mm	54mm	A

HFMF48

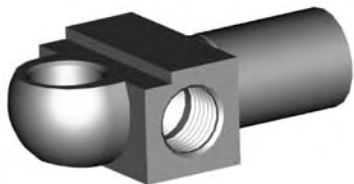


8.75mm Hole

THREAD	SEAT	MOUNT	HOLE	OAL	FITS
M10 x 1	Inverted	Bolted	8.75mm	53mm	A

BOLT ON MOUNT

HFMF50



8/10mm Hole

THREAD	SEAT	MOUNT	HOLE	OAL	FITS
M10x1-(2)	DPS	Bolted	8/10mm	48mm	US

HFMF69



6.4mm Hole

THREAD	SEAT	MOUNT	HOLE	OAL	FITS
M10 x 1	Inverted	Bolted	6.4mm	62mm	A

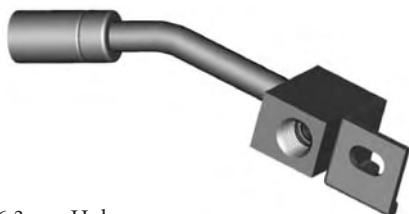
HFMF322



M8 x 1.25

THREAD	SEAT	MOUNT	HOLE	OAL	FITS
M10 x 1	Inverted	Bolted	M8 x 1.25	42mm	A

HFMF342



6.3mm Hole

THREAD	SEAT	MOUNT	HOLE	OAL	FITS
M10 x 1	Inverted	Bolted	6.3mm	100mm	A

HFMF343

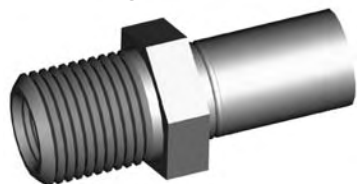


6.3mm Hole

THREAD	SEAT	MOUNT	HOLE	OAL	FITS
M10 x 1	Inverted	Bolted	6.3mm	100mm	A

BULKHEAD MOUNT

HFMFX01



5/8NF External Thread

THREAD	SEAT	MOUNT	HEX	OAL	FITS
M10 x 1	Inverted	Bulkhead	19mm	45mm	V

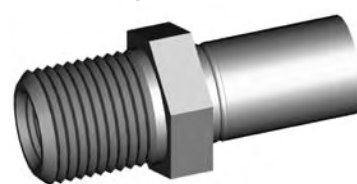
HFMFX02



5/8NF External Thread

THREAD	SEAT	MOUNT	HEX	OAL	FITS
M10x1.25	Inverted	Bulkhead	19mm	45mm	V

HFMFX04



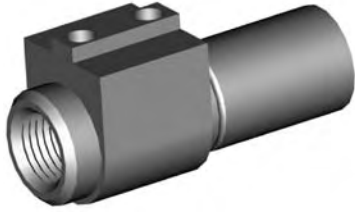
5/8NF External Thread

THREAD	SEAT	MOUNT	HEX	OAL	FITS
M10 x 1	DPS	Bulkhead	19mm	45mm	V

METRIC FEMALE FITTINGS

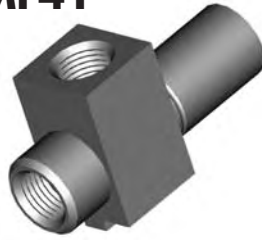
BRACKET MOUNT

HFMF40



THREAD	SEAT	MOUNT	HEX	OAL	FITS
M10 x 1	DPS	Bracket		42mm	US

HFMF41



THREAD	SEAT	MOUNT	HEX	OAL	FITS
M10x1-(2)	DPS	Bracket		44mm	US

HFMF311



THREAD	SEAT	MOUNT	HEX	OAL	FITS
M12 x 1	DPS	Bracket		55mm	US

HFMF312



THREAD	SEAT	MOUNT	HEX	OAL	FITS
M10 x 1	DPS	Bracket		55mm	US

HFMF313



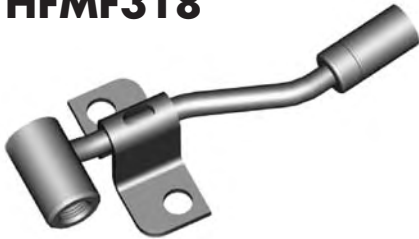
THREAD	SEAT	MOUNT	HEX	OAL	FITS
M12 x 1	DPS	Bracket		48mm	US

HFMF317



THREAD	SEAT	MOUNT	HEX	OAL	FITS
M10 x 1	Inverted	Bracket		48mm	A

HFMF318



THREAD	SEAT	MOUNT	HEX	OAL	FITS
M10 x 1	Inverted	Bracket		115mm	A

HFMF319



THREAD	SEAT	MOUNT	HEX	OAL	FITS
M10 x 1	Inverted	Bracket		115mm	A

HFMF320



THREAD	SEAT	MOUNT	HEX	OAL	FITS
M10 x 1	Inverted	Bracket		38mm	A

HFMF324



THREAD	SEAT	MOUNT	HEX	OAL	FITS
M10 x 1	Inverted	Bracket		46mm	A

HFMF325

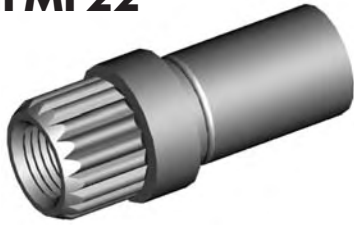


THREAD	SEAT	MOUNT	HEX	OAL	FITS
M10 x 1	Inverted	Bracket		45mm	A

METRIC FEMALE FITTINGS

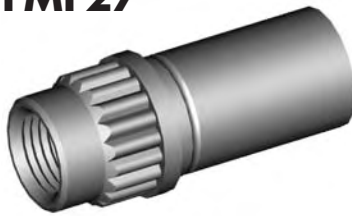
SPLINE MOUNT

HFMF22



THREAD	SEAT	MOUNT	HEX	OAL	FITS
M10 x 1	DPS	Spline		39mm	EU

HFMF27



THREAD	SEAT	MOUNT	HEX	OAL	FITS
M10 x 1	DPS	Spline		36mm	EU

A = Asian

EU = European

US = United States

UNI = Universal

V = Various

METRIC MALE FITTINGS

STANDARD MOUNT

HFMM01



THREAD	THREAD LENGTH	HEX	OAL	FITS
M10 x 1	17mm	16mm	45mm	A

HFMM03



THREAD	THREAD LENGTH	HEX	OAL	FITS
M10 x 1	14mm	14mm	43mm	V

HFMM04



THREAD	THREAD LENGTH	HEX	OAL	FITS
M10 x 1.25	13mm	16mm	41mm	A

HFMM05



THREAD	THREAD LENGTH	HEX	OAL	FITS
M12 x 1	18mm	17mm	47mm	A

HFMM06



THREAD	THREAD LENGTH	HEX	OAL	FITS
M10 x 1	13mm	16mm	41mm	A

HFMM08



THREAD	THREAD LENGTH	HEX	OAL	FITS
M10 x 1	17mm	17mm	78mm	A

HFMM13



THREAD	THREAD LENGTH	HEX	OAL	FITS
M12 x 1	19mm	16mm	77mm	US

HFMM15



THREAD	THREAD LENGTH	HEX	OAL	FITS
M14 x 1.5	23.5mm	16mm	77mm	US

HFMM17



THREAD	THREAD LENGTH	HEX	OAL	FITS
M12 x 1.25	17mm	17mm	45mm	EU

HFMM22



THREAD	THREAD LENGTH	HEX	OAL	FITS
M10 x 1	33mm	14mm	62mm	EU

HFMM23



Left Hand Thread

THREAD	THREAD LENGTH	HEX	OAL	FITS
M10 x 1	14mm	14mm	43mm	EU

HFMM24



THREAD	THREAD LENGTH	HEX	OAL	FITS
M10 x 1.5	13mm	16mm	41mm	EU

A = Asian

EU = European

US = United States

UNI = Universal

V = Various

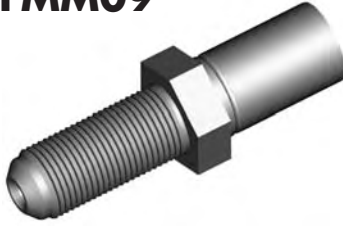
METRIC MALE FITTINGS

HFMM02



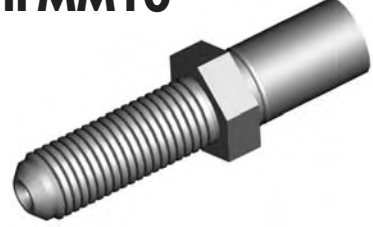
THREAD	THREAD LENGTH	HEX	OAL	FITS
M10 x 1	23mm	15mm	51mm	V

HFMM09



THREAD	THREAD LENGTH	HEX	OAL	FITS
M12 x 1	28mm	17mm	56mm	A

HFMM10



THREAD	THREAD LENGTH	HEX	OAL	FITS
M12 x 1.5	33mm	17mm	61mm	A

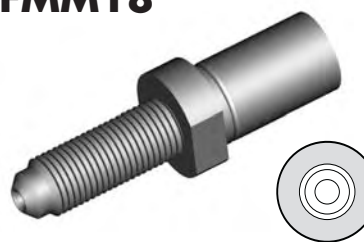
BULKHEAD MOUNT

HFMM11



THREAD	THREAD LENGTH	HEX	OAL	FITS
M10 x 1.25	15mm	14mm	43mm	EU

HFMM18



THREAD	THREAD LENGTH	HEX	OAL	FITS
M10 x 1	28mm		56mm	EU

HFMM20



THREAD	THREAD LENGTH	HEX	OAL	FITS
M10 x 1	24mm	14mm	81mm	EU

HFMM21



THREAD	THREAD LENGTH	HEX	OAL	FITS
M10 x 1.25	24mm	14mm	76mm	EU

CLIP MOUNT

HFMM12



THREAD	THREAD LENGTH	HEX	OAL	FITS
M10 x 1	15mm	17mm	50mm	V

HFMM302



THREAD	THREAD LENGTH	HEX	OAL	FITS
M10 x 1	14.5mm	17mm	49mm	EU

HFMM303



THREAD	THREAD LENGTH	HEX	OAL	FITS
M10 x 1	16mm	17mm	52mm	EU

A = Asian

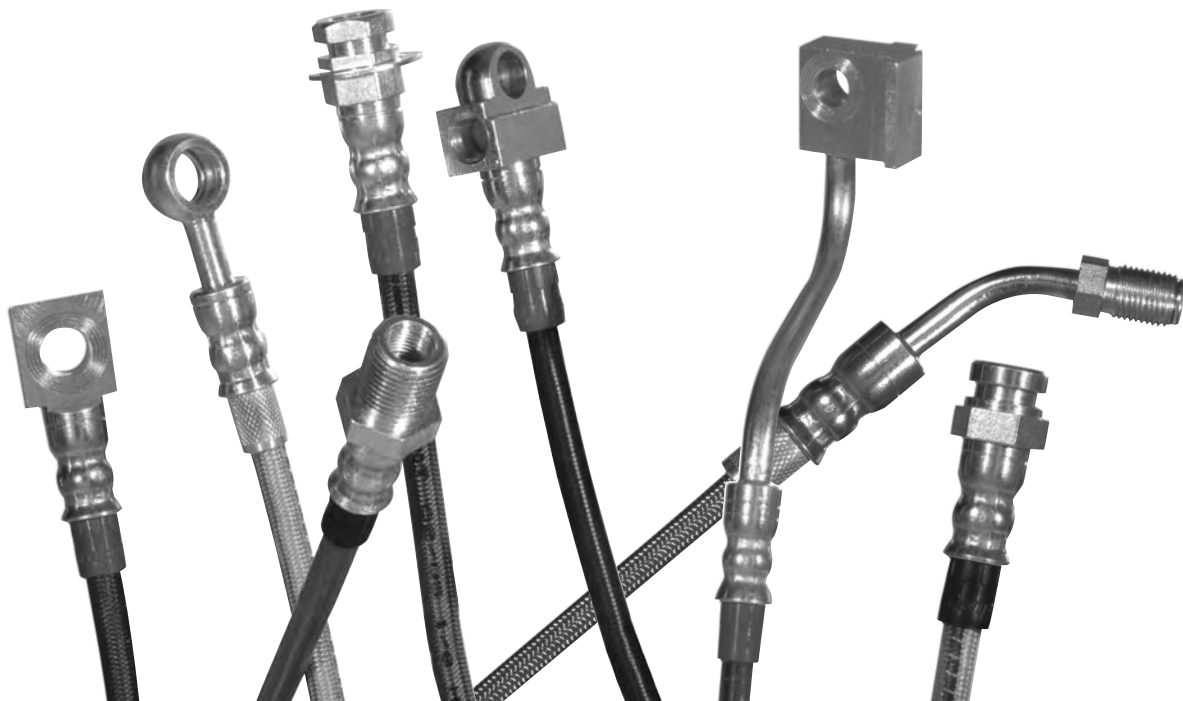
EU = European

US = United States

UNI = Universal

V = Various

FITTINGS WITH HEAVY DUTY SILVER FINISH



Fittings listed here are plated with an extra top coat for extra protection. They all have a bright silver finish and are ideal to use with stainless steel braided lines. To order these fittings, just place CC at the end of the original part number.

PART NO.	PART NO.	PART NO.	PART NO.	PART NO.
HF04CC	HFB27CC	HFC10CC	HFIFX02CC	HFMF28CC
HF06CC	HFB28CC	HFC12CC	HFIM01CC	HFMF31CC
HF07CC	HFB34CC	HFC13CC	HFIM02CC	HFMF35CC
HF09CC	HFB35CC	HFC17CC	HFIM03CC	HFMF38CC
HF10CC	HFB36CC	HFIF01CC	HFIM13CC	HFMF39CC
HF11CC	HFB37CC	HFIF02CC	HFIM19CC	HFMF50CC
HF12CC	HFB40CC	HFIF05CC	HFMF01CC	HFMF51CC
HF13CC	HFB47CC	HFIF07CC	HFMF02CC	HFMF100CC
HF14CC	HFB82CC	HFIF08CC	HFMF03CC	HFMFX01CC
HF15CC	HFB83CC	HFIF09CC	HFMF04CC	HFMFX04CC
HF16CC	HFB100CC	HFIF10CC	HFMF05CC	HFMM01CC
HF17CC	HFB101CC	HFIF19CC	HFMF06CC	HFMM02CC
HF34CC	HFB150CC	HFIF32CC	HFMF08CC	HFMM03CC
HF35CC	HFB306CC	HFIF33CC	HFMF09CC	HFMM04CC
HFB01CC	HFB307CC	HFIF34CC	HFMF11CC	HFMM05CC
HFB02CC	HFC02CC	HFIF35CC	HFMF14CC	HFMM06CC
HFB09CC	HFC04CC	HFIF36CC	HFMF15CC	HFMM11CC
HFB10CC	HFC05CC	HFIF45CC	HFMF16CC	
HFB12CC	HFC06CC	HFIF51CC	HFMF20CC	
HFB13CC	HFC07CC	HFIF301CC	HFMF24CC	
HFB14CC	HFC09CC	HFIFX01CC	HFMF26CC	

A = Asian

EU = European

US = United States

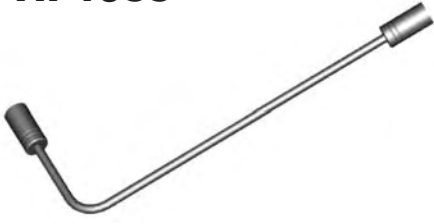
UNI = Universal

V = Various

HARLEY DAVIDSON FITTINGS

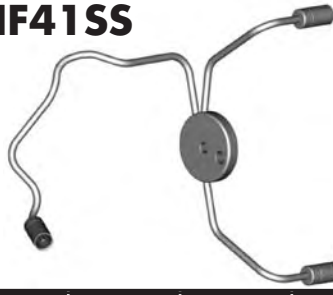
JOINERS

HF40SS



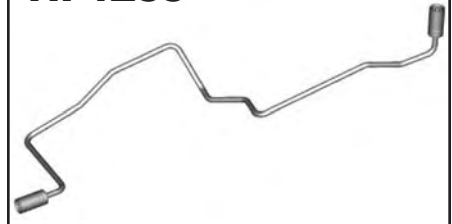
THREAD	FLARE	TUBE SIZE	OAL
		3/16"	225mm

HF41SS



THREAD	FLARE	TUBE SIZE	OAL
		3/16"	240mm

HF42SS



THREAD	FLARE	TUBE SIZE	OAL
		3/16"	405mm

HF44SS



THREAD	FLARE	TUBE SIZE	OAL
		3/16"	340mm

HF47SS



THREAD	FLARE	TUBE SIZE	OAL
		3/16"	290mm

HF64SS



THREAD	FLARE	TUBE SIZE	OAL
1/8NPT		3/16"	145mm

HF65SS



THREAD	FLARE	TUBE SIZE	OAL
		3/16"	270mm

HF45SS



THREAD	FLARE	TUBE SIZE	OAL
3/8NF	Double	3/16"	95mm

HF46SS



THREAD	FLARE	TUBE SIZE	OAL
3/8NF	Double	3/16"	80mm

HF50SS



THREAD	FLARE	TUBE SIZE	OAL
3/8NF	Double	3/16"	260mm

SWIVELS

HF51SS



THREAD	FLARE	TUBE SIZE	OAL
3/8NF	Double	3/16"	315mm

HF66SS



THREAD	FLARE	TUBE SIZE	OAL
3/8NF	Double	3/16"	190mm

HF67SS



THREAD	FLARE	TUBE SIZE	OAL
3/8NF	Double	3/16"	180mm

A = Asian

EU = European

US = United States

UNI = Universal

V = Various

HARLEY DAVIDSON FITTINGS

SWIVELS

BANJOS

HF68SS

THREAD	FLARE	TUBE SIZE	OAL
3/8NF	Double	3/16"	160mm

HF70SS

THREAD	FLARE	TUBE SIZE	OAL
3/8NF	Double	3/16"	125mm

HFB10SS

1/8" NPT Thread

HOLE	THICK	WIDTH	ANGLE	OAL
10mm	8mm	19mm	70°	82mm

HFB150SS

HOLE	THICK	WIDTH	ANGLE	OAL
7/16"	8.5mm	19mm		196mm

HFB151SS

HOLE	THICK	WIDTH	ANGLE	OAL
10mm	9mm	17mm	80°	60mm

HFB154SS

HOLE	THICK	WIDTH	ANGLE	OAL
7/16"	8.5mm	20.5mm		260mm

HFB162SS

1/8" NPT Thread

HOLE	THICK	WIDTH	ANGLE	OAL
10mm	8.5mm	18mm		340mm

HFB163SS

HOLE	THICK	WIDTH	ANGLE	OAL
7/16"	8.5mm	20.5mm		260mm

HFB167SS

HOLE	THICK	WIDTH	ANGLE	OAL
10mm	8.5mm	18mm		200mm

HFB168SS

HOLE	THICK	WIDTH	ANGLE	OAL
7/16"	8.5mm	19mm		200mm

HFB169SS

HOLE	THICK	WIDTH	ANGLE	OAL
7/16"	8.5mm	19mm		220mm

HFB170SS

HOLE	THICK	WIDTH	ANGLE	OAL
7/16"	8.5mm	20.5mm	40°	235mm

HFB171SS

HOLE	THICK	WIDTH	ANGLE	OAL
10mm	8.5mm	18mm	40°	65mm

HFB178SS

HOLE	THICK	WIDTH	ANGLE	OAL
7/16"	8.5mm	19mm	40°	75mm

A = Asian EU = European US = United States UNI = Universal V = Various

BRACKETS

BQB01



LOCATION	HOLE	FITS
	9mm	US

BQB04



LOCATION	HOLE	FITS
Either	8.4mm	US

BQB05



LOCATION	HOLE	FITS
	9mm	US

BQB10



LOCATION	HOLE	FITS
Left	9.6mm	US

BQB11



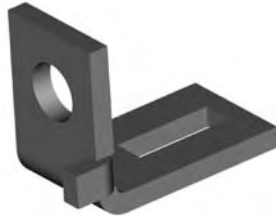
LOCATION	HOLE	FITS
Right	9.6mm	US

BQB20



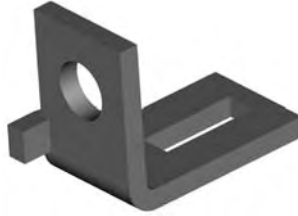
LOCATION	HOLE	FITS
Either	9mm	US

BQB24



LOCATION	HOLE	FITS
Left	8.8mm	US

BQB25



LOCATION	HOLE	FITS
Right	8.8mm	US

BQB26



LOCATION	HOLE	FITS
Right	7mm	US

BQB27



LOCATION	HOLE	FITS
Left	7mm	US

BQB29



LOCATION	HOLE	FITS
Either	9.6mm	US

BQB30



LOCATION	HOLE	FITS
Rear	10.4mm	US

BQB39



LOCATION	HOLE	FITS
Left	9mm	US

BQB40



LOCATION	HOLE	FITS
Right	9mm	US

BQB41



LOCATION	HOLE	FITS
Left	9mm	US

FITTING BRACKETS

A = Asian

EU = European

US = United States

UNI = Universal

V = Various

BRACKETS

FITTING BRACKETS

BQB42



LOCATION	HOLE	FITS
Right	9mm	US

BQB50



LOCATION	HOLE	FITS
Either	8mm	US

BQB63



LOCATION	HOLE	FITS
Rear	10.8mm	US

BQB64



LOCATION	HOLE	FITS
Left	8.3mm	US

BQB65



LOCATION	HOLE	FITS
Right	8.3mm	US

BQB75



LOCATION	HOLE	FITS
Rear	8.5mm	US

BQB86



LOCATION	HOLE	FITS
Left	8.5mm	US

BQB87



LOCATION	HOLE	FITS
Right	8.5mm	US

BQB312



LOCATION	HOLE	FITS
Left	6.3mm	US

BQB313



LOCATION	HOLE	FITS
Right	6.3mm	US

A = Asian

EU = European

US = United States

UNI = Universal

V = Various

BRACKETS

BQB02



LOCATION	HOLE	FITS
Right	M6 x 1	US

BQB08



LOCATION	HOLE	FITS
Right	8.8mm	US

BQB09



LOCATION	HOLE	FITS
Left	8.8mm	US

BQB12



LOCATION	HOLE	FITS
Left	M6 x 1	US

BQB16



LOCATION	HOLE	FITS
Left	9mm	US

BQB17



LOCATION	HOLE	FITS
Right	9mm	US

CENTER BRACKETS

BQB18



LOCATION	HOLE	FITS
Left	9mm	US

BQB19



LOCATION	HOLE	FITS
Right	9mm	US

BQB21



LOCATION	HOLE	FITS
Left	6mm	US

BQB22



LOCATION	HOLE	FITS
Right	6mm	US

BQB23



LOCATION	HOLE	FITS
Either		US

BQB36



LOCATION	HOLE	FITS
Left		US

BQB37



LOCATION	HOLE	FITS
Right		US

BQB38



LOCATION	HOLE	FITS
Either	5/16NF	US

BQB48



LOCATION	HOLE	FITS
Left	6.4mm	US

A = Asian

EU = European

US = United States

UNI = Universal

V = Various

BRACKETS

CENTER BRACKETS

UNIVERSAL

BQB49



LOCATION	HOLE	FITS
Right	6.4mm	US

BQB69



LOCATION	HOLE	FITS
Either	M8x1.25	US

BQB70



LOCATION	HOLE	FITS
Left	9.2mm	US

BQB71



LOCATION	HOLE	FITS
Right	9.2mm	US

BQB74



LOCATION	HOLE	FITS
Left	8.8mm	US

BQB77



LOCATION	HOLE	FITS
Left	9.1mm	US

BQB78



LOCATION	HOLE	FITS
Right	8.8mm	US

BQB06



LOCATION	HOLE	FITS
	17mm	UNI

A = Asian

EU = European

US = United States

UNI = Universal

V = Various

RUBBER HOSE COMPONENTS

BQ203



DIAMETER	OAL	FITS
16mm	104mm	V

BQ210



DIAMETER	OAL	FITS
30mm	10mm	EU

BQ211



DIAMETER	OAL	FITS
18mm	25mm	V

BQ212



DIAMETER	OAL	FITS
22mm	41mm	V

BQ213



DIAMETER	OAL	FITS
30mm	32mm	A

BQ215



DIAMETER	OAL	FITS
25mm	22mm	A

BQ216



DIAMETER	OAL	FITS
28mm	32mm	EU

BQ217



DIAMETER	OAL	FITS
28mm	29mm	EU

BQ218



DIAMETER	OAL	FITS
25mm	16mm	EU

A = Asian

EU = European

US = United States

UNI = Universal

V = Various

PLASTIC CLIPS

BQ65



BQ66



BQ67



BQ68



BQ69



BQ70



BQ97

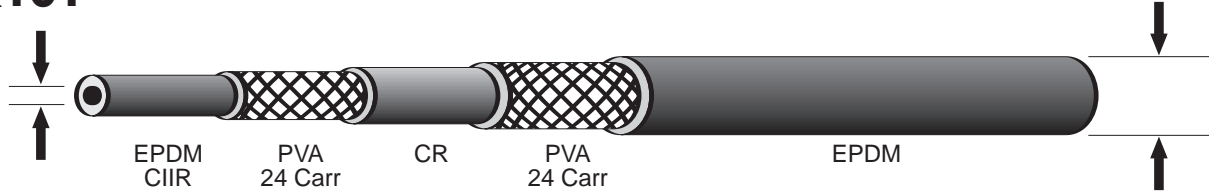


BQ98



Rubber Brake Hose

BQ101



Hose ID: .130" - .138"
(3.3mm - 3.5mm)

Hose OD: .406" - .421"
(10.3mm - 10.7mm)

- Two braid PVA reinforced hose
- Meets FMVSS-106 and SAE J1401 specifications
- Temperature range -50°C to 121°C
- Compatible with DOT 3, DOT 4 and most non-petroleum based brake fluids
- Excellent moisture resistance
- Superior weather resistant cover material

(50 Feet Minimum)

BQ11



Hose Protector Spring
(PKT 6)

BQ12



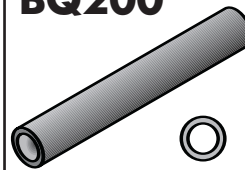
Fitting Shoulder Clips
(PKT 20)

BQ71



Bracket Retaining Screws
(PKT 50)

BQ200



Insulating Hose Thick
(10' Length)

BQ201



Insulating Hose Thin
(50' Length)

Rubber Brake Hose Cutter



This heavy duty tool cuts hose clean & square every time - with ease. Blade is reversible for double life. Replacement blade available (BQ2101B).



BQ2004

We still offer replacement blades for the BQ2003 red plastic hose cutter which is discontinued.

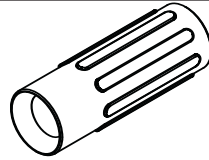
STAINLESS STEEL BRAIDED HOSE & ACCESSORIES



Polished Stainless Steel Fittings

Complete your brake plumbing job with stainless steel fittings for non-rusting durability. Polished finish for the chrome like look.

PART NO.	DESCRIPTION
BQ56ASS	3 Way Tube Tee - 3/8" x 24NF - 5/16" mount hole
BQ111SS	Female Tube Joiner - 7/16" x 24NS
BQ2577SS	Tube Nut Male (7/16" x 24NS - 1/4")
BQ3052SS	Brake Hose Retaining Clip
BQ4511SS	Tube Nut Male (M10 x 1 - 3/16")
BQ4513SS	Tube Nut Male (M12 x 1 - 1/4")
BQ5555SS	Tube Nut Male (3/8" x 24NF - 3/16")
BQ5842SS	Tube Nut Male (7/16" x 24NS - 3/16")
BQ8093SS	Banjo Bolt - 3/8" x 24NF x 1"L
BQ8095SS	Banjo Bolt - M10 x 1 x 1"L
BQ8099SS	Banjo Bolt - M10 x 1.25 x 1"L
HF01SS	Fitting - Lifesaver - 3/16" Countersink
HF06SS	Fitting - Male Swivel Nut 7/16" x 24NS (90°)
HF07SS	Fitting - Male Swivel Nut 7/16" x 24NS (45°)
HF09SS	Fitting - Female Swivel Nut 3/8" x 24NF (Straight)
HF10SS	Fitting - Female Swivel Nut 3/8" x 24NF (45°)
HF11SS	Fitting - Female Swivel Nut 3/8" x 24NF (90°)
HF12SS	Fitting - Female Swivel Nut 7/16" x 20NF (Straight)
HF13SS	Fitting - Female Swivel Nut 7/16" x 20NF (45°)
HF14SS	Fitting - Female Swivel Nut 7/16" x 20NF (90°)
HF15SS	Fitting - Male Swivel Nut 7/16" x 24NS
HF16SS	Fitting - Male Swivel Nut 3/8" x 24NF
HF17SS	Fitting - Male Swivel Nut 3/8" x 24NF (90°)
HF30SS	Fitting - 3/16" Compression
HF31SS	Fitting - 1/4" Compression
HF33SS	Fitting - Male Swivel Nut 3/8" x 24NF (45°)
HFB09SS	Fitting - Banjo 10 x 10mm
HFB34SS	Fitting - Banjo 10 x 8mm (Extra long Neck)
HFB37SS	Fitting - Banjo 10 x 10mm (Extra long Neck)
HFIF01SS	Fitting - Female 3/8" x 24NF
HFIF02SS	Fitting - Female 7/16" x 24NS
HFIM01SS	Fitting - Male 3/8" x 24NF Short
HFIM03SS	Fitting - Male 7/16" x 20NF Short
HFIM19SS	Fitting - Male 1/8" x 27NPTF
HFMF04SS	Fitting - Female M10 x 1 (17mm Flats)
HFMF06SS	Fitting - Male M10 x 1 (Short)



Fitting Joint Supports

PART NO.	DESCRIPTION
BQ15BK	High Temp Material - Black
BQ15BL	High Temp Material - Blue
BQ15GR	High Temp Material - Green
BQ15GY	High Temp Material - Grey
BQ15RD	High Temp Material - Red
BQ16	Aluminum (Off Road Use Only)

Stainless Steel Braided Brake Hose

PART NO.	SIZE	JACKET COLOR
BQ301	1/8" ID	Nil
BQ303	1/8" ID	Clear
BQ303BK	1/8" ID	Smoke/Black
BQ303BL	1/8" ID	Blue
BQ303GR	1/8" ID	Green
BQ303RD	1/8" ID	Red

Clear Center Fitting Adapter Tube

Allows you to adapt center fittings and accessories to non-jacketed hose available in 10' lengths.



BQ310

Allows you to adapt center fittings and accessories to jacketed hose available in 10' lengths.



BQ311

TOOLS

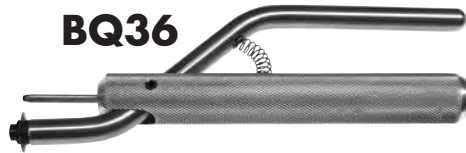


BQ1019

Hose Expander

Ideal for the pre-installation of fittings into 1/8" ID Teflon braided hose. Three sided tool fits into a drill chuck for easy application. Simply place tool into drill chuck & rotate into end of hose.

BQ36



Skiving Tool

This handy tool is the ultimate tool for skiving the jacket off 1/8" ID braided hose – cuts cleanly and square to the correct length every time. The incorporated mandrel also acts as a hose expander to help with the installation of the fitting. Made in the USA.

BQ42525



Replacement Cutting Wheel

BQ2006



BQ2006A

Stainless Steel Braided Hose Shears

Heavy duty shears for a clean cut every time – Portable & light weight for ease of use – Suitable for cutting hose to 1/2" OD.

Replacement jaws available (BQ2006A).

BQ2006B



Mount bracket allows you to secure shears so that you can cut hose with one hand.

Join the Revolution!



EziBend Tube

Convert your steel tubes to non rusting EziBend tube that:

- Complies with DOT standards.
- Doesn't rust or corrode.
- Very easy to work with.
- Does not require bending tools.
- OEM on luxury European vehicles.
- Polishes to a brilliant finish.
- Available in sizes 3/16", 1/4", 5/16", 3/8".

EziBend Tube

PART NO.	OD SIZE	WALL THICKNESS	LENGTH
T187-100CN	3/16"	.028"	100'
T187-25CN	3/16"	.028"	25'
T250-25CN	1/4"	.028"	25'
T312-25CN	5/16"	.028"	25'
T375-25CN	3/8"	.028"	25'

Tube Nuts

PART NO.	TYPE	THREAD	TUBE
BQ57	Female	7/16" x 20NF	1/4"
BQ72	Male	M10 x 1	3/16" DIN
BQ2577	Male	7/16" x24NS	1/4"
BQ2578	Male	1/2" x 20NF	5/16"
BQ4276	Male	3/8" x 20BSF	3/16"
BQ4277	Male	7/16" x 20NF	1/4"
BQ4285	Male	3/8" x 2M4NF	3/16"
BQ4510	Male	M9 x 1	3/16"
BQ4511	Male	M10 x 1	3/16"
BQ4512	Male	M10 x 1.25	3/16"
BQ4513	Male	M12 x 1	1/4"
BQ5555	Male	3/8" x 24NF	3/16"
BQ5842	Male	7/16" x 24NS	3/16"
BQ6118	Male	7/16" x 20NF	3/16"
BQ9174	Female	M12 x 1	3/16"
BQ9175	Female	M10 x 1	3/16"
BQ9176	Female	3/8" x 24NF	3/16"
BQ9177	Female	1/2" x 20NF	5/16"
BQ9178	Female	M12 x 1.5	1/4"
BQ9179	Female	M12 x 1	1/4"
BQ9180	Male	M12 x 1	3/16"
BQ9181	Male	5/8" x 18NF	3/8"
BQ9182	Male	M12 x 1.5	6mm
BQ9183	Male	M14 x 1.5	6mm
BQ9184	Male	1/2" x 20NF	3/16"
BQ9185	Male	9/16" x 18NF	3/16"
BQ9186	Male	9/16" x 18NF	1/4"
BQ9187	Male	1/2" x 20NF	1/4"
BQ9188	Male	M10 x 1.5	3/16"
BQ9189	Male	M11 x 1.0	3/16"
BQ9190	Male	M11 x 1.25	3/16"
BQ9191	Male	M11 x 1.5	3/16"
BQ9192	Male	M12 x 1.25	3/16"
BQ9193	Male	M12 x 1.5	3/16"
BQ9194	Male	M13 x 1.0	3/16"
BQ9195	Male	M13 x 1.25	3/16"
BQ9196	Male	M13 x 1.5	3/16"
BQ9197	Male	M14 x 1.5	5/16"
BQ9198	Male	M16 x 1.5	5/16"
BQ9199	Male	M18 x 1.5	5/16"

Brake Tube Protector

- No rust Stainless Steel Spring protects your brake tube from gravel & debris
- Easy to install
- Just cut to length
- Available in sizes 3/16" ID & 1/4" ID in 3 feet lengths
- Can be polished to shine.

BQ232

(1/4")

(3/16")

BQ231

Polished Stainless Steel Tube

This brightly finished tube is annealed which makes it easy to flare and bend.

PART NO.	OD SIZE	WALL THICKNESS	LENGTH
T187-20SS	3/16"	.028"	20'
T250-20SS	1/4"	.028"	20'
T312-20SS	5/16"	.028"	20'
T375-20SS	3/8"	.028"	20'

Fastest Flaring Tool in the West



BQ27008

This Double Flaring Tool:

- Creates single and double flares on tube sizes 3/16" - 1/4" - 5/16" - 3/8" - 1/2" – 6mm – 8mm – 10mm – 12mm and the special 4.75mm DIN single flares found on European vehicles
- Punch turrets has OP-1 and OP-2 punches positioned side by side for efficiency
- Produces flares in a matter of seconds
- Provides the convenience and efficiency of lever cam operation
- Features automatic punch extraction
- Screw clamp for accurate die alignment
- Comes in a rugged plastic case

Double Flaring Tool has become the industry standard for its speed, accuracy, and reliability. It produces convex and double flares to SAE and DIN standards on all light wall annealed tubing.

Die & Punch Guide

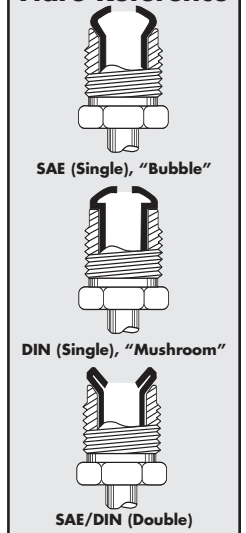
Bubble & Double Flare

TUBE SIZE	DIE NO.	PUNCH NO. OP- 1	PUNCH NO. OP- 2
3/16"	BQ27031	BQ27051	BQ27071
1/4"	BQ27032	BQ27052	BQ27071
5/16"	BQ27033	BQ27053	BQ27072
3/8"	BQ27034	BQ27054	BQ27072
1/2"	BQ27035	BQ27055	BQ27073
6mm	BQ27042	BQ27052	BQ27071
8mm	BQ27043	BQ27053	BQ27072
10mm	BQ27044	BQ27054	BQ27072
12mm	BQ27045	BQ27055	BQ27073

DIN Flare

TUBE SIZE	DIE NO.	PUNCH NO.
4.75mm	BQ27041	BQ27061
6mm	BQ27047	BQ27062
8mm	BQ27048	BQ27063
10mm	BQ27049	BQ27064
12mm	BQ27050	BQ27065

Flare Reference



The Handiest Tool in a Brake Mechanic's Toolbox

Brake Tube Pliers

For use on 3/16" brake tube



BQ21600

Convenient and Quality Crafted

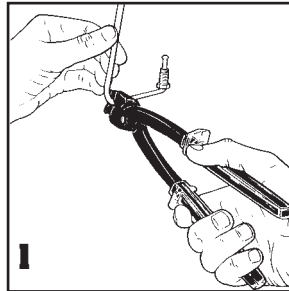
Brake mechanics often testify that this tool is the handiest tool in their tool boxes. Brake Tube Pliers are lightweight, yet strong enough for any brake job.

Brake Tube Pliers are designed to work efficiently, securely, and accurately in tight spaces, without

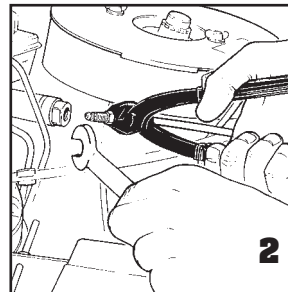
damaging the brake tube.

So, when the job calls for working with 3/16" brake tube, *Brake Tube Pliers will make life as easy as **1, 2, 3.***

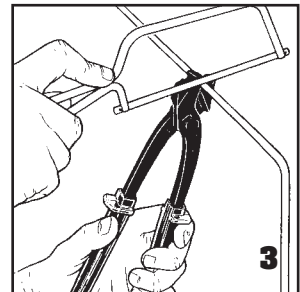
Brake Tube Pliers are distributed exclusively by BrakeQuip and manufactured in Europe.



1
Brake Tube Pliers allows a tight 90° bend on the brake tube, right at the tube nut.



2
Brake Tube Pliers allow you to align the tube nut during assembly. In addition, it grips 3/16" brake tube securely without damaging it.



3
The hardened, square face on the back of Brake Tube Pliers acts as a guide to cut 3/16" brake tube squarely.

The Best Tube Bender in the Business



BQ25600

- Bends 3/16" & 1/4" - 4.75mm & 6mm OD tube
- This tool has a unique rolling action that is essential when bending plastic or epoxy coated tube
- Bends of up to 180° can be made without harming the coating of the tube
- Removable handle for ease of use
- Vice lug on handle for one hand operation
- Able to do tight bends without kinking

MISCELLANEOUS

BQB06



Universal Mounting Bracket

Universal hole size allows most brake hoses to be securely mounted. Bracket can be screwed on, riveted or welded to frame. Rounded finish for professional looks.

BQ3052



Brake Hose Retaining Clip

Universal clip design secures most brake hoses to mounting surface. Also available in polished stainless steel.

BQ153



Weld On Fitting

The ultimate problem solver for connecting metal tube to hose.

FEATURES:

- Universal countersink hole for 3/16" & 1/4" tube sizes
- Popular No. 3 JIC take off point

BQ7812



Three-way Tee with bracket

- 3/8 x 24NF x 3 (Inverted Seat)
- Locating bracket avoids twisting

BQ222



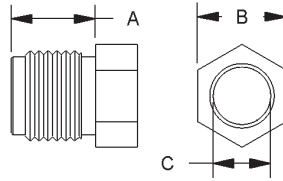
Universal tandem trailer fitting (4 way)

- 3/8 x 24NF x 4 (Inverted Seat)
- Secured by bulkhead mount (Use BQ13 bulkhead nut)
- Eliminates fittings and joins
- Any excess ports can be blanked off with a BQ19 plug

TUBE NUTS

Tube Nuts

Most BrakeQuip tube nuts have two distinct features for easier installation & dismantling.



1. **A small step on end of the thread –**

This allows for easier installation because the step acts as a guide & makes it easier to start the thread. It also gives the thread clearance at the end which eliminates the problem of flaring out when over tightened. If this happens, the nut can be very difficult to remove & can some times destroy the thread when removed.

2. **A thread relief under the hex –** apart

from looking more professional, this allows the nut to be screwed down right up to the hex if necessary.

FEATURES:

- Male & Female
- Imperial & Metric Threads
- Various tube sizes
- Zinc plated for corrosion resistance

Assortment kits available.

To order see Part No. BQ7005 & BQ7006.

PART NO.	TYPE	THREAD	A	B	C
BQ57	Female	7/16" x 20NF	3/8"	9/16"	1/4"
BQ72	Male	M10 x 1	14mm	10mm	3/16" DIN
BQ2577	Male	7/16" x 24NS	13mm	7/16"	1/4"
BQ2578	Male	1/2" x 20NF	12mm	1/2"	5/16"
BQ4276	Male	3/8" x 20BSF	16mm	3/8"	3/16"
BQ4277	Male	7/16" x 20NF	18mm	7/16"	1/4"
BQ4285	Male	3/8" x 24NF	16mm	3/8"	3/16"
BQ4510	Male	M9 x 1	14mm	10mm	3/16"
BQ4511	Male	M10 x 1	14mm	10mm	3/16"
BQ4512	Male	M10 x 1.25	15mm	10mm	3/16"
BQ4513	Male	M12 x 1	15mm	12mm	1/4"
BQ5555	Male	3/8" x 24NF	10mm	3/8"	3/16"
BQ5842	Male	7/16" x 24NS	10mm	7/16"	3/16"
BQ6118	Male	7/16" x 20NF	18mm	7/16"	3/16"
BQ9174	Female	M12 x 1	10mm	16mm	3/16"
BQ9175	Female	M10 x 1	10mm	1/2"	3/16"
BQ9176	Female	3/8" x 24NF	10mm	1/2"	3/16"
BQ9177	Female	1/2" x 20NF	7/16"	5/8"	5/16"
BQ9178	Female	M12 x 1.5	10mm	16mm	1/4"
BQ9179	Female	M12 x 1	10mm	16mm	1/4"
BQ9180	Male	M12 x 1	15mm	12mm	3/16"
BQ9181	Male	5/8" x 18NF	14mm	5/8"	3/8"
BQ9182	Male	M12 x 1.5	13mm	12mm	6mm
BQ9183	Male	M14 x 1.5	15mm	14mm	6mm
BQ9184	Male	1/2" x 20NF	13mm	1/2"	3/16"
BQ9185	Male	9/16" x 18NF	14mm	9/16"	3/16"
BQ9186	Male	9/16" x 18NF	14mm	9/16"	1/4"
BQ9187	Male	1/2" x 20NF	14mm	1/2"	1/4"
BQ9188	Male	M10 x 1.5	15mm	10mm	3/16"
BQ9189	Male	M11 x 1.0	15mm	11mm	3/16"
BQ9190	Male	M11 x 1.25	15mm	11mm	3/16"
BQ9191	Male	M11 x 1.5	15mm	11mm	3/16"
BQ9192	Male	M12 x 1.25	15mm	12mm	3/16"
BQ9193	Male	M12 x 1.5	15mm	12mm	3/16"
BQ9194	Male	M13 x 1.0	15mm	13mm	3/16"
BQ9195	Male	M13 x 1.25	15mm	13mm	3/16"
BQ9196	Male	M13 x 1.5	15mm	13mm	3/16"
BQ9197	Male	M14 x 1.5	15mm	14mm	5/16"
BQ9198	Male	M16 x 1.5	16mm	16mm	5/16"
BQ9199	Male	M18 x 1.5	16mm	18mm	5/16"

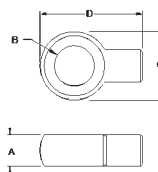
WELD ON BANJO HEADS

Weld On Banjo Heads

Designed to make plumbing easy when banjo fittings are necessary.

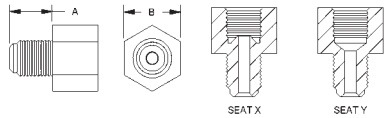
Simply braze 3/16" (4.75mm) tube to banjo head.

Can also be countersunk for 1/4" tube.



PART NO.	A	B	C	D
BQ223	8mm	10mm	17mm	25mm
BQ224	10mm	10mm	18mm	25mm
BQ225	10mm	7/16"	19mm	25mm

THREAD ADAPTERS



Male - Female Thread Adapters

Save time & hassle when adapting different threads quickly & easily. Universal Male thread can be sealed with all sealing combinations.

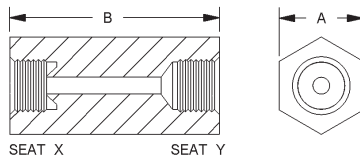
FEATURES:

- Imperial & Metric Threads
- Inverted seat & drill point seats available
- Zinc plated for corrosion resistance

Assortment kit available.
To order see Part No. BQ7004.

PART NO.	MALE THREAD	FEMALE THREAD	SEAT TYPE	A	B
BQ40	M10 x 1	M10 x 1	Y	13mm	13mm
BQ41	M10 x 1	M10 x 1.25	X	12mm	13mm
BQ42	M10 x 1.25	M10 x 1	X	12mm	13mm
BQ43	M12 x 1	M10 x 1	X	12mm	16mm
BQ44	M10 x 1	M12 x 1	X	12mm	16mm
BQ45	3/8" x 24NF	7/16" x 24NS	X	12mm	9/16"
BQ46	7/16" x 24NS	3/8" x 24NF	X	12mm	9/16"
BQ47	7/16" x 20NF	3/8" x 24NF	X	12mm	9/16"
BQ48	1/8" x 27NPT	3/8" x 24NF	X	12mm	1/2"
BQ49	M10 x 1	3/8" x 24NF	X	12mm	13mm
BQ50	3/8" x 24NF	M10 x 1	X	12mm	1/2"
BQ120	1/2" x 20NF	3/8" x 24NF	X	12mm	16mm
BQ121	9/16" x 20NS	3/8" x 24NF	X	12mm	11/16"
BQ122	1/2" x 20NF	7/16" x 24NS	X	12mm	16mm
BQ123	9/16" x 18NF	7/16" x 24NS	X	12mm	11/16"
BQ124	9/16" x 18NF	3/8" x 24NF	X	12mm	11/16"
BQ125	M10 x 1	3/8" x 24NF	Y	12mm	13mm
BQ126	7/16" x 20NF	M10 x 1	Y	12mm	9/16"
BQ127	7/16" x 24NS	1/2" x 20NF	X	12mm	5/8"

FEMALE TUBE JOINERS



Female Tube Joiners

The recommended way to legally join two tubes together. BrakeQuip tube joiners allow you to join tubes professionally & safely.

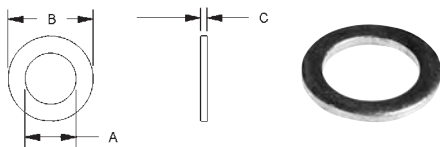
FEATURES:

- Imperial & Metric Threads
- Inverted seat & drill point seats available
- Zinc plated for corrosion resistance

Assortment kit available.
To order see Part No. BQ7009.

PART NO.	THREAD	SEAT TYPE	A	B
BQ110	3/8" x 24NF	X	1/2"	22.2mm
BQ111	7/16" x 24NS	X	9/16"	25.0mm
BQ112	1/2" x 20NF	X	5/8"	25.0mm
BQ113	5/8" x 18NF	X	3/4"	29.0mm
BQ114	M10 x 1	Y	13.0mm	29.0mm
BQ115	3/8" x 24NF	Y	1/2"	29.0mm
BQ116	M12 x 1	X	5/8"	25.0mm
BQ117	M10 x 1	X	13mm	22mm

COPPER WASHERS



Copper Washers

Heavy duty copper washers for maximum sealing power. The legal & professional way to seal high pressure hydraulic braking systems.

FEATURES:

- Sizes to fit all banjo bolts
- Reduced outer diameter for less interference
- Annealed for maximum sealing

Assortment kit available.
To order see Part No. BQ7000.

PART NO.	NOMINAL ID	A	B	C
BQ813	8mm	8.1	13.00	1.3
BQ3858	3/8"	9.6	15.6	1.5
BQ1016	10mm	10.1	16.00	1.5
BQ1118	7/16"	11.2	18.00	1.5
BQ1218	12mm	12.1	18.00	1.5
BQ1320	1/2"	12.8	20.00	2.0
BQ1421	9/16"	14.3	22.00	2.0
BQ1522	15mm	15.1	22.00	2.0
BQ1624	16mm	16.1	24.00	2.0

BULKHEAD NUTS

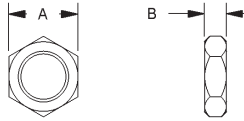
Bulkhead Nuts

The biggest range of brake hose bulkhead nuts in the country.

FEATURES:

- Zinc plated for corrosion resistance
- Imperial & Metric Threads
- Heavy duty construction

Assortment kit available.
To order see Part No. BQ7008.



PART NO.	THREAD	A	B
BQ13	5/8" x 18NF	15/16"	8mm
BQ77	11/16" x 16NF	1"	8mm
BQ78	3/8" x 24NF	1/2"	5mm
BQ79	M10 x 1	13mm	5mm
BQ80	7/16" x 20NF	5/8"	6mm
BQ81	M12 x 1	19mm	6mm
BQ82	M12 x 1.5	19mm	6mm
BQ83	1/2" x 20NF	3/4"	6mm
BQ84	3/4" x 16NF	1-1/16"	8mm
BQ85	20 x 1.5mm	27mm	8mm
BQ86	18 x 1.5mm	25mm	8mm
BQ87	16 x 1.5mm	22mm	7mm
BQ88	14 x 1.5mm	19mm	6mm
BQ89	7/8" x 18NS	1-1/8"	8mm

3 WAY TUBE TEE'S WITH MOUNTING HOLE

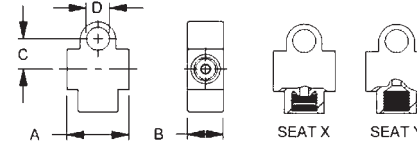
3 Way Tube Tee's with Mounting Hole

The ideal fitting for legally joining 3 tubes together. Also features a mounting hole for secure installation.

FEATURES:

- Imperial & Metric Threads
- Inverted seat & drill point seats available
- Zinc plated for corrosion resistance

Assortment kit available.
To order see Part No. BQ7002.



PART NO.	THREAD	SEAT TYPE	A	B	C	D
BQ56A	3/8" x 24NF	X	24mm	1/2"	10.75mm	5/16"
BQ90	3/8" x 24NF	Y	28mm	1/2"	10.75mm	5/16"
BQ91	M10 x 1	X	24mm	1/2"	10.75mm	10mm
BQ92	7/16" x 24NS	X	24mm	14mm	10.75mm	3/8"
BQ93	1/8" x 27NPT	Y	26mm	1/2"	10.75mm	5/16"
BQ94	7/16" x 20NF	Y	30mm	14mm	10.75mm	3/8"
BQ95	M10 x 1	Y	30mm	14mm	10.75mm	7mm

BANJO UNIONS

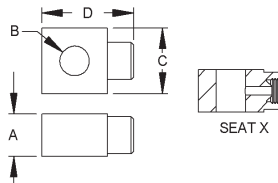
Banjo Unions

These fittings allow you to convert most joints to a sharp 90 degrees legally & professionally. The swivel feature of these fittings gives you more flexibility in installation.

FEATURES:

- Imperial & Metric Threads
- Zinc plated for corrosion resistance

Assortment kit available.
To order see Part No. BQ7001.



PART NO.	THREAD	SEAT TYPE	A	B	C
BQ60	3/8" x 24NF	X	1/2"	10mm	17mm
BQ61	M10 x 1	X	13mm	10mm	17mm
BQ62	7/16" x 24NS	X	14mm	7/16"	18mm
BQ63	1/2" x 20NF	X	16mm	1/2"	20mm

BANJO ADAPTERS

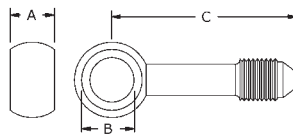
Banjo Adapters

These fittings allow you to convert most joints to a sharp 90 degrees legally & professionally. The swivel feature of these fittings gives you more flexibility in installation.

FEATURES:

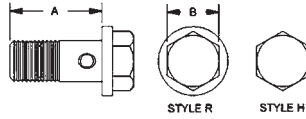
- Imperial & Metric Threads
- Zinc plated for corrosion resistance

Assortment kit available.
To order see Part No. BQ7001.



PART NO.	A	B	C	THREAD
BQ150	10mm	10mm	42mm	3/8" x 24NF (No. 3 JIC)
BQ151	10mm	10mm	21mm	3/8" x 24NF (No. 3 JIC)
BQ152	10mm	10mm	21mm x (2)	3/8" x 24NF (No. 3 JIC)

BANJO BOLTS



Banjo Bolts

A banjo bolt for every application.

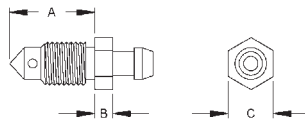
FEATURES:

- Reduced head size for appearance & less interference
- Zinc plated for corrosion resistance
- Imperial & Metric Threads

Assortment kit available.
To order see Part No. BQ7007.

PART NO.	THREAD	HEAD STYLE	A	B
BQ8086	M10 x 1.5	R	24mm [15/16"]	11mm
BQ8087	M11 x 1.25	R	24mm [15/16"]	5/8"
BQ8088	M10 x 1.5	R	27mm [1-1/16"]	10mm
BQ8089	7/16" x 20NF	R	24mm [15/16"]	7/16"
BQ8090	7/16 x 24NS	R	27mm [1-1/16"]	1/2"
BQ8092	M12 x 1.5	R	25mm [1"]	14mm
BQ8093	3/8" x 24NF	R	25mm [1"]	14mm
BQ8094	M10 x 1	R	26mm [1"]	14mm
BQ8095	M10 x 1	R	22mm [7/8"]	12mm
BQ8096	7/16" x 20NF	R	27mm [1-1/16"]	11mm
BQ8097	1/2" x 20NF	R	30mm [1-3/16"]	9/16"
BQ8098	M12 x 1	R	21mm [13/16"]	13mm
BQ8099	M10 x 1.25	R	22mm [7/8"]	12mm

BLEED SCREWS



Bleed Screws

These popular bleed screws makes replacement easy.

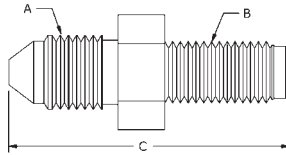
FEATURES:

- Heavy duty hex allows for good gripping
- Zinc plated for corrosion resistance
- Imperial & Metric Threads

Assortment kit available.
To order see Part No. BQ7011.

PART NO.	THREAD	A	B	C
BQ4433	3/8" x 24NF	20mm	5mm	10mm
BQ4434	M10 x 1	23mm	6mm	10mm
BQ4435	M10 x 1	19mm	6mm	10mm

MALE TEST ADAPTERS



Male Test Adapters

These handy test Adapters can be used for a variety of applications including tapping into your hydraulic system for pressure readings. Will fit most bleed screw openings.

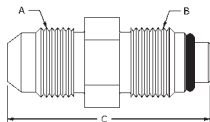
FEATURES:

- Imperial & Metric Threads
- Take off point are universal JIC ends
- Zinc plated for corrosion resistance

Assortment kit available.
To order see Part No. BQ7010.

PART NO.	A	B	C
BQ128	3/8" x 24NF (No. 3 JIC)	M10 x 1.25	36mm
BQ129	3/8" x 24NF (No. 3 JIC)	M10 x 1.00	36mm
BQ130	3/8" x 24NF (No. 3 JIC)	M10 x 1.5	60mm
BQ131	7/16" x 20NF (No. 4 JIC)	3/8" x 24NF	37mm
BQ132	3/8" x 24NF (No. 3 JIC)	1/4" x 28NF	36mm
BQ133	3/8" x 24NF (No. 3 JIC)	5/16" x 24NF	36mm
BQ134	7/16" x 20NF (No. 4 JIC)	7/16" x 24NS	37mm
BQ135	3/8" x 24NF (No. 3 JIC)	3/8" x 24NF	36mm
BQ144	7/16" x 20NF (No. 4 JIC)	M12 x 1.00	37mm

BUMP TUBE ADAPTERS



Bump Tube Adapters

Handy, hard to get tube adapters for power steering & fuel systems.

FEATURES:

- Comes with a high temperature Viton "O" ring
- Imperial & Metric Threads

Assortment kit available.
To order see Part No. BQ7003.

PART NO.	A	B	C
14MMBT-6MJ	9/16" x 18NF (No.6 JIC)	M14 x 1.5	39mm
16MMBT-6FI	5/8" x 18NF (Inverted Seat)	M16 x 1.5	32mm
16MMBT-6MJ	9/16" x 18NF (No.6 JIC)	M16 x 1.5	39mm
5MBT-5MJ	1/2" x 20NF (No. 5 JIC)	1/2" x 20NF	37mm
7MBT-6MJ	9/16" x 18NF (No.6 JIC)	11/16" x 18NF	41mm

ASSORTMENT KITS

Copper Washers BQ7000

PART NO.	DESCRIPTION	QTY.
BQ1016	10mm ID	20
BQ1118	7/16" ID	20
BQ1218	12mm ID	20
BQ1320	1/2" ID	20
BQ1421	9/16" ID	10
BQ1522	15mm ID	10
BQ1624	16mm ID	10
BQ3858	3/8" ID	20

Banjo Unions & Adapters BQ7001

PART NO.	DESCRIPTION	QTY.
BQ60	Union 10mm Hole x 1/2" (T) - 3/8" x 24NF (IS)	4
BQ61	Union 10mm Hole x 13mm (T) - M10x1 (IS)	4
BQ62	Union 7/16" Hole x 14mm (T) - 7/16" x 24NS (IS)	4
BQ63	Union 1/2" Hole x 16mm (T) - 1/2" x 20NF (IS)	4
BQ150	Adapter 10 x 10mm (Ext.) - 3/8" x 24NF (No. 3 JIC)	4
BQ151	Adapter 10 x 10mm - 3/8" x 24NF (No. 3 JIC)	4

T = Thickness IS = Inverted Seat

3-Way Tube Tee with Mounting Hole BQ7002

PART NO.	DESCRIPTION	QTY.
BQ56A	3/8" x 24NF (IS) 5/16" Mount Hole	2
BQ90	3/8" x 24NF (DPS) 5/16" Mount Hole	2
BQ91	M10 x 1 (IS) 10mm Mount Hole	2
BQ92	7/16" x 24NS (IS) 3/8" Mount Hole	2
BQ93	1/8" x 27NPT 5/16" Mount Hole	2
BQ94	7/16" x 20NF (DPS) 3/8" Mount Hole	2

Bump Tube Adapters BQ7003

PART NO.	DESCRIPTION	QTY.
14MMBT-6MJ	M14 x 1.5 - 9/16" x 18NF (No. 6 JIC)	4
16MMBT-6FI	M16 x 1.5 - 5/8" x 18NF (Female Inverted)	4
16MMBT-6MJ	M16 x 1.5 - 9/16" x 18NF (No. 6 JIC)	4
5MBT-5MJ	1/2" x 20NF - 1/2" x 20NF (No. 5 JIC)	4
7MBT-6MJ	11/16" x 16N 9/16" x 18NF (No. 6 JIC)	4

Male - Female Thread Adapters BQ7004

PART NO.	DESCRIPTION	QTY.
BQ40	(M) M10 x 1 (F) M10 x 1 (DPS)	4
BQ41	(M) M10 x 1 (F) M10 x 1.25 (IS)	4
BQ42	(M) M10 x 1.25 (F) M10 x 1 (IS)	4
BQ43	(M) M12 x 1 (F) M10 x 1 (IS)	4
BQ44	(M) M10 x 1 (F) M12 x 1 (IS)	4
BQ45	(M) 3/8" x 24NF (F) 7/16" x 24NS (IS)	4
BQ46	(M) 7/16" x 24NS (F) 3/8" x 24NF (IS)	4
BQ47	(M) 7/16" x 20NF (F) 3/8" x 24NF (IS)	4
BQ48	(M) 1/8" x 27NPT (F) 3/8" x 24NF (IS)	4
BQ49	(M) M10 x 1 (F) 3/8" x 24NF (IS)	4
BQ50	(M) 3/8" x 24NF (F) M10 x 1 (IS)	4
BQ120	(M) 1/2" x 20NF (F) 3/8" x 24NF (IS)	4
BQ121	(M) 9/16" x 20NS (F) 3/8" x 24NF (IS)	4
BQ122	(M) 1/2" x 20NF (F) 7/16" x 24NS (IS)	4
BQ123	(M) 9/16" x 18NF (F) 7/16" x 24NS (IS)	4
BQ124	(M) 9/16" x 18NF (F) 3/8" x 24NF (IS)	4
BQ125	(M) M10 x 1 (F) 3/8" x 24NF (DPS)	4
BQ126	(M) 7/16" x 20NF (F) M10 x 1 (DPS)	4

Male Test Adapters BQ7010

PART NO.	DESCRIPTION	QTY.
BQ130	M10 x 1.5 - 3/8" x 24NF (No. 3 JIC)	4
BQ131	3/8" x 24NF - 7/16" x 20NF (No. 4 JIC)	4
BQ132	1/4" x 28NF - 3/8" x 24NF (No. 3 JIC)	4
BQ133	5/16" x 24NF - 3/8" x 24NF (No. 3 JIC)	4
BQ134	7/16" x 24NS - 7/16" x 20NF (No. 4 JIC)	4
BQ135	3/8" x 24NF - 3/8" x 24NF (No. 3 JIC)	4

Fitting Plugs & Bleed Screws BQ7011

PART NO.	DESCRIPTION	QTY.
BQ18	Fitting Plug M10 x 1	6
BQ19	Fitting Plug 3/8" x 24NF	6
BQ26	Fitting Plug 7/16" x 24NS	6
BQ4433	Bleed Screw 3/8" x 24NF	6
BQ4434	Bleed Screw M10 x 1 Long	6
BQ4435	Bleed Screw M10 x 1 Short	6

(M) = Male (F) = Female (IS) = Inverted Seat (DPS) = Drill Point Seat (DIN) = European Style Flare

Metric Tube Nuts BQ7005

PART NO.	DESCRIPTION	QTY.
BQ72	Male M10 x 1 - 3/16" Tube (DIN)	4
BQ4511	Male M10x1 - 3/16" Tube	10
BQ4512	Male M10x1.25 - 3/16" Tube	6
BQ4513	Male M12x1 - 1/4" Tube	6
BQ9174	Female M12 x 1 - 3/16" Tube	4
BQ9175	Female M10 x 1 - 3/16" Tube	4
BQ9178	Female M12 x 1.5 - 1/4" Tube	4
BQ9179	Female M12 x 1 - 1/4" Tube	4
BQ9180	Male M12 x 1 - 3/16" Tube	4
BQ9182	Male M12 x 1.5 - 6mm Tube	4
BQ9183	Male M14 x 1.5 - 6mm Tube	4
BQ9188	Male M10 x 1.5 - 3/16" Tube	4
BQ9191	Male M11 x 1.5 - 3/16" Tube	4
BQ9192	Male M12 x 1.25 - 3/16" Tube	4
BQ9193	Male M12 x 1.5 - 3/16" Tube	4

Bulkhead Nuts BQ7008

PART NO.	DESCRIPTION	QTY.
BQ13	5/8" x 18NF	4
BQ77	11/16" x 18NS	2
BQ78	3/8" x 24NF	4
BQ79	M10 x 1	4
BQ80	7/16" x 20NF	4
BQ81	M12 x 1	4
BQ82	M12 x 1.5	4
BQ83	1/2" x 20NF	4
BQ84	3/4" x 16NF	2
BQ87	M16 x 1.5	2
BQ88	M14 x 1.5	2
BQ89	7/8" x 18NS	2

Imperial Tube Nuts BQ7006

PART NO.	DESCRIPTION	QTY.
BQ57	Female 7/16" x 20NF Thread - 1/4" Tube	4
BQ2577	Male 7/16" x 24NS Thread - 1/4" Tube	10
BQ2578	Male 1/2" x 20NF Thread - 5/16" Tube	6
BQ4276	Male 3/8" x 20BSF Thread - 3/16" Tube	4
BQ4277	Male 7/16" x 20NF Thread - 1/4" Tube	4
BQ4285	Male 3/8" x 24NF Thread - 3/16" Tube	4
BQ5555	Male 3/8" x 24NF Thread - 3/16" Tube	10
BQ5842	Male 7/16" x 24NS Thread - 3/16" Tube	10
BQ6118	Male 7/16" x 20NF Thread - 3/16" Tube	6
BQ9176	Female 3/8" x 24NF Thread - 3/16" Tube	4
BQ9177	Female 1/2" x 20NF Thread - 5/16" Tube	4
BQ9184	Male 1/2" x 20NF Thread - 3/16" Tube	4
BQ9185	Male 9/16" x 18NF Thread - 3/16" Tube	4
BQ9186	Male 9/16" x 18NF Thread - 1/4" Tube	4
BQ9187	Male 1/2" x 20NF - 1/4" Tube	4

Banjo Bolts BQ7007

PART NO.	DESCRIPTION	QTY.
BQ8086	M10 x 1.5 L = 23mm	4
BQ8087	M11 x 1.25 L = 23mm	4
BQ8088	M10 x 1.5 L = 29mm	4
BQ8089	7/16" x 20NF L = 15/16"	4
BQ8090	7/16" x 24NS L = 1-1/16"	4
BQ8092	M12 x 1.5 L = 25mm	4
BQ8093	3/8" x 24NF L = 1"	6
BQ8095	M10 x 1 L = 22mm	6
BQ8096	7/16" x 20NF L = 1-1/16"	4
BQ8097	1/2" x 20NF L = 1-3/16"L	4
BQ8098	M12 x 1 L = 21mm	4
BQ8099	M10 x 1.25 L = 25mm	4

Female Tube Joiners BQ7009

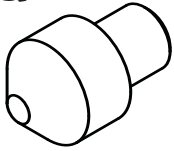
PART NO.	DESCRIPTION	QTY.
BQ110	3/8" x 24NF (IS)	4
BQ111	7/16" x 24NS (IS)	4
BQ112	1/2" x 20NF (IS)	4
BQ115	3/8" x 24NF (DPS)	4
BQ116	M12 x 1 (IS)	4
BQ117	M10 x 1 (IS)	4

Brake Hose Plug Kit BQ7012 see page 66.

Test Adapter Kit BQ7013 see page 65.

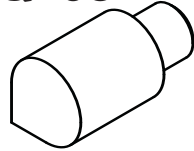
TEST CONES

BQ21



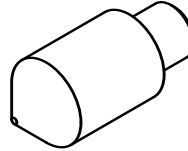
BQ21 Test Cone is designed as an aid for testing banjo fittings.

BQ206

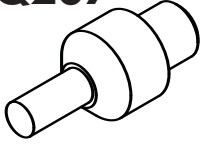


BQ206 and BQ206H are universal Test Cones for doing most general applications.

BQ206H



BQ207



BQ207 and BQ207H Test Cones are designed for testing female fittings with inverted seats.

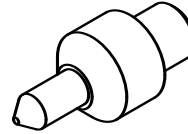
BQ207H



BQ206S

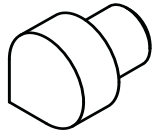


BQ206HS



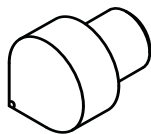
BQ206S and BQ206HS Test Cones are designed for testing female swivel fittings and female fittings with a drill point seat (DPS).

BQ208



BQ208 and BQ208H Test Cone are designed for testing extra long fittings

BQ208H



Pressure Test Adapter Kit

PART NO.	QUANTITY	SIZE
BQ27	2	3/8"
BQ27H	2	3/8"
BQ28	2	10mm
BQ28H	2	10mm
BQ29	2	7/16"
BQ29H	2	7/16"
BQ30	2	12mm
BQ30H	2	12mm
BQ38	2	16mm
BQ38H	2	16mm
BQ39	2	15mm
BQ39H	2	15mm
BQ1020	1	3/8" - 5/8"

Assortment Kit BQ7013

SYSTEM AIDS

BQ23



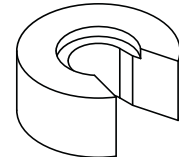
Fitting Test Spade

BQ2001



Constriction Gauge

BQ1021A



Rear Crimp Setting Tool

BQ2005



Pro System
Crimp Head Dust Cover

BQ2008



Pro System
Crimp Setting Tool

BQ2009



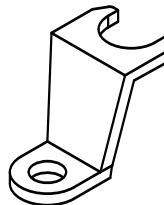
Pro System
Rear Crimp Setting Tool

BQ2010



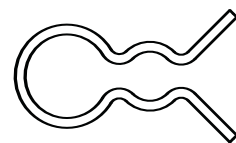
Countersink Drill Bit

BQ37



Econo System
Crimp Setting Spade

BQ1014



Econo System
Crimp Setting Clip

BQ1020



Banjo Blocking-Off Tool

A professional tool for blocking-off banjo fittings – Ideal for blocking off brake hoses with banjo fittings during maintenance & trouble shooting. Copper Washer sealing surfaces allows for sealing high pressures – Easy to use & reliable - Fits banjos holes 3/8" to 5/8".

BQ1022



Fitting Pressure Test Adapter

Ideal for pre-testing reworked fittings.

Fitting Plugs

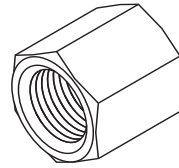
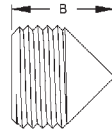
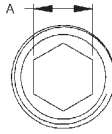
The ideal fitting for blanking off high pressure fluid ports. Fitting design has a universal seat so no sealing compounds necessary.

FEATURES:

- Zinc plated for corrosion resistance
- Imperial & Metric Threads

Assortment kit available.

To order see Part No. BQ7012.



PART NO.	DESCRIPTION	THREAD	A	B
BQ18	Male Plug	M10 x 1	5mm	10mm
BQ19	Male Plug	3/8" x 24NF	3/16"	10mm
BQ26	Male Plug	7/16" x 24NS	1/4"	11mm
BQ160	Female Plug	3/8" x 24NF	1/2"	15mm
BQ161	Female Plug	7/16" x 24NS	9/16"	15mm
BQ162	Female Plug	7/16" x 20NF	9/16"	15mm
BQ163	Female Plug	1/2" x 20NF	16mm	16mm
BQ164	Female Plug	M10 x 1	13mm	15mm
BQ165	Female Plug	M10 x 1.25	13mm	15mm
BQ166	Female Plug	M12 x 1	16mm	16mm
BQ167	Female Plug	M12 x 1.5	16mm	16mm

BQ22A



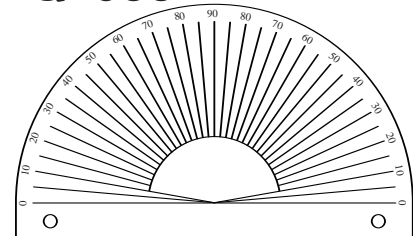
Part A – Banjo Bending Bar

BQ22B



Part B – Banjo Holder

BQ2033



Bench Mounted Angle Gauge

Can be bench mounted – Ideal for aligning tubes and fittings.

“The” Automotive Thread Gauge

Instantly identifies at least 95% of brake plumbing threads.

Check Threads in an Instant...Accurately:

- Includes the 8 most popular sizes used on braking systems
- Includes both male & female size gauging
- Comes in sturdy black plastic case
- All threads are hardened for long life
- Male thread gauge is designed with a seat so you're able to use it as a plug



BQ2100

IMPERIAL	METRIC
3/8" x 24 NF	M10 x 1
7/16" x 24 NS	M10 x 1.25
7/16" x 20 NF	M12 x 1
1/2" x 20 NF	M12 x 1.5

Pre-fluxed Brazing Rods



BQ33

A brazing rod for the professional brazing of steel, stainless or brass – Designed for brazing high pressure fittings – Convenient pre-fluxed rod makes it a breeze to braze (No flux required) – Contains 56% silver and no Cadmium for safe use. (1/4 lb. - 8 rods per pack)

Lubricants



W893106

High Pressure Grease Lubricant

A high pressure & high temperature grease lubricant in a 500ml aerosol can, ideal for getting into hard to get at places. High adhesive strength & water resistant – comes with a directional nozzle for easy application. Suitable for extreme pressure applications.

W893550



Teflon Dry Lubricant

A Teflon Dry Lube in a 300ml aerosol can. A transparent lubricant that suits most surfaces & dry to the touch - Ideal for applications where you need the lubrication but not the mess.

INDEX

PART NO.	PAGE NO.
14MMBT-6MJ	63, 64
16MMBT-6FI	63, 64
16MMBT-6MJ	63, 64
5MBT-5MJ	63, 64
7MBT-6MJ	63, 64
BQ11	54
BQ12	54
BQ13	59, 62, 64
BQ15BK	55
BQ15BL	55
BQ15GR	55
BQ15GY	55
BQ15RD	55
BQ16	55
BQ18	64, 66
BQ19	59, 64, 66
BQ21	65
BQ22A	66
BQ22B	66
BQ23	65
BQ26	64, 66
BQ27	65
BQ27H	65
BQ28	65
BQ28H	65
BQ29	65
BQ29H	65
BQ30	65
BQ30H	65
BQ33	67
BQ36	55
BQ37	65
BQ38	65
BQ38H	65
BQ39	65
BQ39H	65
BQ40	61, 64
BQ41	61, 64
BQ42	61, 64
BQ43	61, 64
BQ44	61, 64
BQ45	61, 64
BQ46	61, 64
BQ47	61, 64
BQ48	61, 64
BQ49	61, 64
BQ50	61, 64
BQ56A	62
BQ56ASS	55
BQ57	56, 60, 64
BQ60	62, 64
BQ61	62, 64
BQ62	62, 64
BQ63	62, 64
BQ65	53
BQ66	53
BQ67	53

PART NO.	PAGE NO.
BQ68	53
BQ69	53
BQ70	53
BQ71	54
BQ72	56, 60, 64
BQ77	62, 64
BQ78	62, 64
BQ79	62, 64
BQ80	62, 64
BQ81	62, 64
BQ82	62, 64
BQ83	62, 64
BQ84	62, 64
BQ85	62
BQ86	62
BQ87	62, 64
BQ88	62, 64
BQ89	62, 64
BQ90	62, 64
BQ91	62, 64
BQ92	62, 64
BQ93	62, 64
BQ94	62, 64
BQ95	62
BQ97	53
BQ98	53
BQ101	54
BQ110	61, 64
BQ111	61, 64
BQ111SS	55
BQ112	61, 64
BQ113	61
BQ114	61
BQ115	61, 64
BQ116	61, 64
BQ117	61, 64
BQ120	61, 64
BQ121	61, 64
BQ122	61, 64
BQ123	61, 64
BQ124	61, 64
BQ125	61, 64
BQ126	61, 64
BQ127	61
BQ128	63
BQ129	63
BQ130	63, 64
BQ131	63, 64
BQ132	63, 64
BQ133	63, 64
BQ134	63, 64
BQ135	63, 64
BQ144	63
BQ150	62, 64
BQ151	62, 64
BQ152	62
BQ153	59

PART NO.	PAGE NO.
BQ160	66
BQ161	66
BQ162	66
BQ163	66
BQ164	66
BQ165	66
BQ166	66
BQ167	66
BQ200	54
BQ201	54
BQ203	52
BQ206	65
BQ206H	65
BQ206HS	65
BQ206S	65
BQ207	65
BQ207H	65
BQ208	65
BQ208H	65
BQ210	52
BQ211	52
BQ212	52
BQ213	52
BQ215	52
BQ216	52
BQ217	52
BQ218	52
BQ222	59
BQ223	60
BQ224	60
BQ225	60
BQ231	56
BQ232	56
BQ301	55
BQ303	55
BQ303BK	55
BQ303BL	55
BQ303GR	55
BQ303RD	55
BQ310	55
BQ311	55
BQ813	61
BQ1016	61, 64
BQ1019	55
BQ1020	65, 66
BQ1021A	65
BQ1022	66
BQ1118	61, 64
BQ1218	61, 64
BQ1320	61, 64
BQ1421	61, 64
BQ1522	61, 64
BQ1624	61, 64
BQ2004	54
BQ2005	65
BQ2006	55
BQ2006A	55

PART NO.	PAGE NO.
BQ2006B	55
BQ2008	65
BQ2009	65
BQ2010	65
BQ2033	66
BQ2100	66, 74, 75
BQ2101	54
BQ2101B	54
BQ2577	56, 60, 64
BQ2577SS	55
BQ2578	56, 60, 64
BQ3052	59
BQ3052SS	55
BQ3858	61, 64
BQ4276	56, 60, 64
BQ4277	56, 60, 64
BQ4285	56, 60, 64
BQ4433	63, 64
BQ4434	63, 64
BQ4435	63, 64
BQ4510	56, 60
BQ4511	56, 60, 64
BQ4511SS	55
BQ4512	56, 60, 64
BQ4513	56, 60, 64
BQ4513SS	55
BQ5555	56, 60, 64
BQ5555SS	55
BQ5842	56, 60, 64
BQ5842SS	55
BQ6118	56, 60, 64
BQ7000	64
BQ7001	64
BQ7002	64
BQ7003	64
BQ7004	64
BQ7005	60, 64
BQ7006	64
BQ7007	64
BQ7008	64
BQ7009	64
BQ7010	64
BQ7011	64
BQ7013	64, 65
BQ7812	59
BQ8086	63, 64
BQ8087	63, 64
BQ8088	63, 64
BQ8089	63, 64
BQ8090	63, 64
BQ8092	63, 64
BQ8093	63, 64
BQ8093SS	55
BQ8094	63
BQ8095	63, 64
BQ8095SS	55
BQ8096	63, 64

PART NO.	PAGE NO.
BQ8097	63, 64
BQ8098	63, 64
BQ8099	63, 64
BQ8099SS	55
BQ9174	56, 60, 64
BQ9175	56, 60, 64
BQ9176	56, 60, 64
BQ9177	56, 60, 64
BQ9178	56, 60, 64
BQ9179	56, 60, 64
BQ9180	56, 60, 64
BQ9181	56, 60
BQ9182	56, 60, 64
BQ9183	56, 60, 64
BQ9184	56, 60, 64
BQ9185	56, 60, 64
BQ9186	56, 60, 64
BQ9187	56, 60, 64
BQ9188	56, 60, 64
BQ9189	56, 60
BQ9190	56, 60
BQ9191	56, 60, 64
BQ9192	56, 60, 64
BQ9193	56, 60, 64
BQ9194	56, 60
BQ9195	56, 60
BQ9196	56, 60
BQ9197	56, 60
BQ9198	56, 60
BQ9199	56, 60
BQ21600	58
BQ25600	58
BQ27008	57
BQ27031	57
BQ27032	57
BQ27033	57
BQ27034	57
BQ27035	57
BQ27041	57
BQ27042	57
BQ27043	57
BQ27044	57
BQ27045	57
BQ27047	57
BQ27048	57
BQ27049	57
BQ27050	57
BQ27051	57
BQ27052	57
BQ27053	57
BQ27054	57
BQ27055	57
BQ27061	57
BQ27062	57
BQ27063	57
BQ27064	57

PART NO.	PAGE NO.
BQ27065	57
BQ27071	57
BQ27072	57
BQ27073	57
BQ42525	55
BQB01	48
BQB02	50
BQB04	48
BQB05	48
BQB06	51, 59
BQB08	50
BQB09	50
BQB10	48
BQB11	48
BQB12	50
BQB16	50
BQB17	50
BQB18	50
BQB19	50
BQB20	48
BQB21	50
BQB22	50
BQB23	50
BQB24	48
BQB25	48
BQB26	48
BQB27	48
BQB29	48
BQB30	48
BQB36	50
BQB37	50
BQB38	50
BQB39	48
BQB40	48
BQB41	48
BQB42	49
BQB48	50
BQB49	51
BQB50	49
BQB63	49
BQB64	49
BQB65	49
BQB69	51
BQB70	51
BQB71	51
BQB74	51
BQB75	49
BQB77	51
BQB78	51
BQB86	49
BQB87	49
BQB312	49
BQB313	49
HF01	7, 73
HF01SS	55
HF02	7

PART NO.	PAGE NO.
HF03	7
HF04	4
HF04CC	45
HF05	7
HF06	4
HF06CC	45
HF06SS	55
HF07	4
HF07CC	45
HF07SS	55
HF08	4
HF09	5
HF09CC	45
HF09SS	55
HF10	5
HF10CC	45
HF10SS	55
HF11	5
HF11CC	45
HF11SS	55
HF12	5
HF12CC	45
HF12SS	55
HF13	5
HF13CC	45
HF13SS	55
HF14	5
HF14CC	45
HF14SS	55
HF15	4
HF15CC	45
HF15SS	55
HF16	4
HF16B	4
HF16CC	45
HF16SS	55
HF17	4
HF17CC	45
HF17SS	55
HF18	4
HF26	7
HF27	7
HF28	4
HF29	4
HF30	6
HF300	6
HF301	6
HF30SS	55
HF31	6
HF31SS	55
HF32	6
HF33	4
HF33SS	55
HF34	4
HF34CC	45
HF35	6

PART NO.	PAGE NO.
HF35CC	45
HF37	6
HF38	6
HF39	4
HF40SS	46
HF41SS	46
HF42SS	46
HF44SS	46
HF45SS	46
HF46SS	46
HF47SS	46
HF50SS	46
HF51SS	46
HF52	4
HF53	5
HF54	5
HF61	5
HF62	6
HF63	5
HF64SS	46
HF65SS	46
HF66SS	46
HF67SS	46
HF68SS	47
HF70SS	47
HF71	6
HF72	6
HF73	6
HF74	6
HF81	5
HF82	5
HF83	6
HF89	5
HFB01	8, 73
HFB01CC	45
HFB02	8
HFB02CC	45
HFB03	8
HFB05	8
HFB07	13
HFB08	13
HFB09	8
HFB09CC	45
HFB09SS	55
HFB10SS	47
HFB10CC	45
HFB11	13
HFB12	13
HFB12CC	45
HFB13	13
HFB13CC	45
HFB14	13
HFB14CC	45
HFB15	8
HFB16	13
HFB17	16

PART NO.	PAGE NO.	PART NO.	PAGE NO.	PART NO.	PAGE NO.	PART NO.	PAGE NO.
HFB18	16	HFB73	9	HFB133	15	HFB300	15
HFB19	8	HFB74	18	HFB134	15	HFB306	21
HFB21	16	HFB75	10	HFB135	20	HFB306CC	45
HFB22	17	HFB76	18	HFB136	20	HFB307	21
HFB23	17	HFB77	18	HFB142	20	HFB307CC	45
HFB24	10	HFB78	18	HFB143	20	HFB309	17
HFB27	8	HFB79	18	HFB144	15	HFB310	17
HFB27CC	45	HFB80	16	HFB145	15	HFB315	22
HFB28	8	HFB81	14	HFB146	15	HFB316	22
HFB28CC	45	HFB82	18	HFB148	16	HFB317	22
HFB29	10	HFB82CC	45	HFB149	15	HFB318	22
HFB30	10	HFB83	18	HFB150SS	47	HFB321	22
HFB31	10	HFB83CC	45	HFB150CC	45	HFB322	22
HFB32	10	HFB84	14	HFB151SS	47	HFB323	22
HFB33	10	HFB85	14	HFB154SS	47	HFB324	22
HFB34	8	HFB86	18	HFB155	20	HFB328	22
HFB34CC	45	HFB87	18	HFB156	21	HFB329	22
HFB34SS	55	HFB90	16	HFB157	10	HFB332	22
HFB35	8	HFB91	14	HFB158	10	HFB333	22
HFB35CC	45	HFB92	10	HFB159	10	HFB340	11
HFB36	8	HFB93	10	HFB160	16	HFB341	11
HFB36CC	45	HFB94	18	HFB161	16	HFB342	11
HFB37	8	HFB95	19	HFB162SS	47	HFB343	11
HFB37CC	45	HFB98	16	HFB163SS	47	HFB344	9
HFB37SS	55	HFB100	14	HFB164	10	HFB345	11
HFB38	13	HFB100CC	45	HFB165	15	HFB346	11
HFB39	16	HFB101	15	HFB166	15	HFB348	11
HFB40	13	HFB101CC	45	HFB167SS	47	HFB349	11
HFB40CC	45	HFB102	19	HFB168SS	47	HFB350	9
HFB41	13	HFB103	19	HFB169SS	47	HFB351	9
HFB42	18	HFB105	10	HFB170SS	47	HFB352	9
HFB43	18	HFB106	10	HFB171SS	47	HFB353	11
HFB45	13	HFB107	19	HFB173	16	HFB354	11
HFB46	13	HFB108	19	HFB174	21	HFB356	11
HFB47	8	HFB111	9	HFB175	21	HFB357	11
HFB47CC	45	HFB112	15	HFB176	21	HFB358	11
HFB48	13	HFB113	19	HFB177	21	HFB359	11
HFB49	13	HFB114	19	HFB178SS	47	HFB360	11
HFB50	8	HFB115	19	HFB180	16	HFB361	12
HFB51	16	HFB116	19	HFB182	17	HFB362	12
HFB52	18	HFB117	19	HFB183	21	HFB363	12
HFB53	13	HFB118	19	HFB184	21	HFB364	12
HFB54	14	HFB119	19	HFB185	21	HFB365	9
HFB55	14	HFB120	19	HFB186	21	HFB367	22
HFB56	14	HFB121	19	HFB187	15	HFB368	23
HFB57	14	HFB122	19	HFB188	17	HFB369	23
HFB58	16	HFB123	20	HFB189	21	HFB370	23
HFB59	14	HFB124	20	HFB190	21	HFB372	12
HFB60	14	HFB125	20	HFB193	17	HFB373	12
HFB61	16	HFB126	20	HFB201	21	HFB375	9
HFB62	14	HFB127	20	HFB202	21	HFB379	17
HFB66	14	HFB128	20	HFB203	17	HFB380	23
HFB67	14	HFB129	20	HFB209	21	HFB381	23
HFB68	18	HFB130	20	HFB210	21	HFB384	15
HFB69	18	HFB131	20	HFB230	15	HFB389	12
HFB72	14	HFB132	20	HFB231	15	HFB390	12

PART NO.	PAGE NO.
HFC01	24, 73
HFC02	24
HFC02CC	45
HFC04	25
HFC04CC	45
HFC05	25
HFC05CC	45
HFC06	24
HFC06CC	45
HFC07	24
HFC07CC	45
HFC09	24
HFC09CC	45
HFC10	24
HFC10CC	45
HFC11	24
HFC12	24
HFC12CC	45
HFC13	24
HFC13CC	45
HFC14	25
HFC15	24
HFC17	24
HFC17CC	45
HFC301	24
HFC307	24
HFC315	24
HFC316	25
HFIF01	26, 73
HFIF01B	26
HFIF01CC	45
HFIF01SS	55
HFIF02	26
HFIF02CC	45
HFIF02SS	55
HFIF03	30
HFIF05	26
HFIF05CC	45
HFIF06	30
HFIF07	26
HFIF07CC	45
HFIF08	26
HFIF08CC	45
HFIF09	26
HFIF09CC	45
HFIF10	26
HFIF10CC	45
HFIF11	26
HFIF14	26
HFIF15	32
HFIF18	26
HFIF19	26
HFIF19CC	45
HFIF20	26
HFIF21	26
HFIF22	32

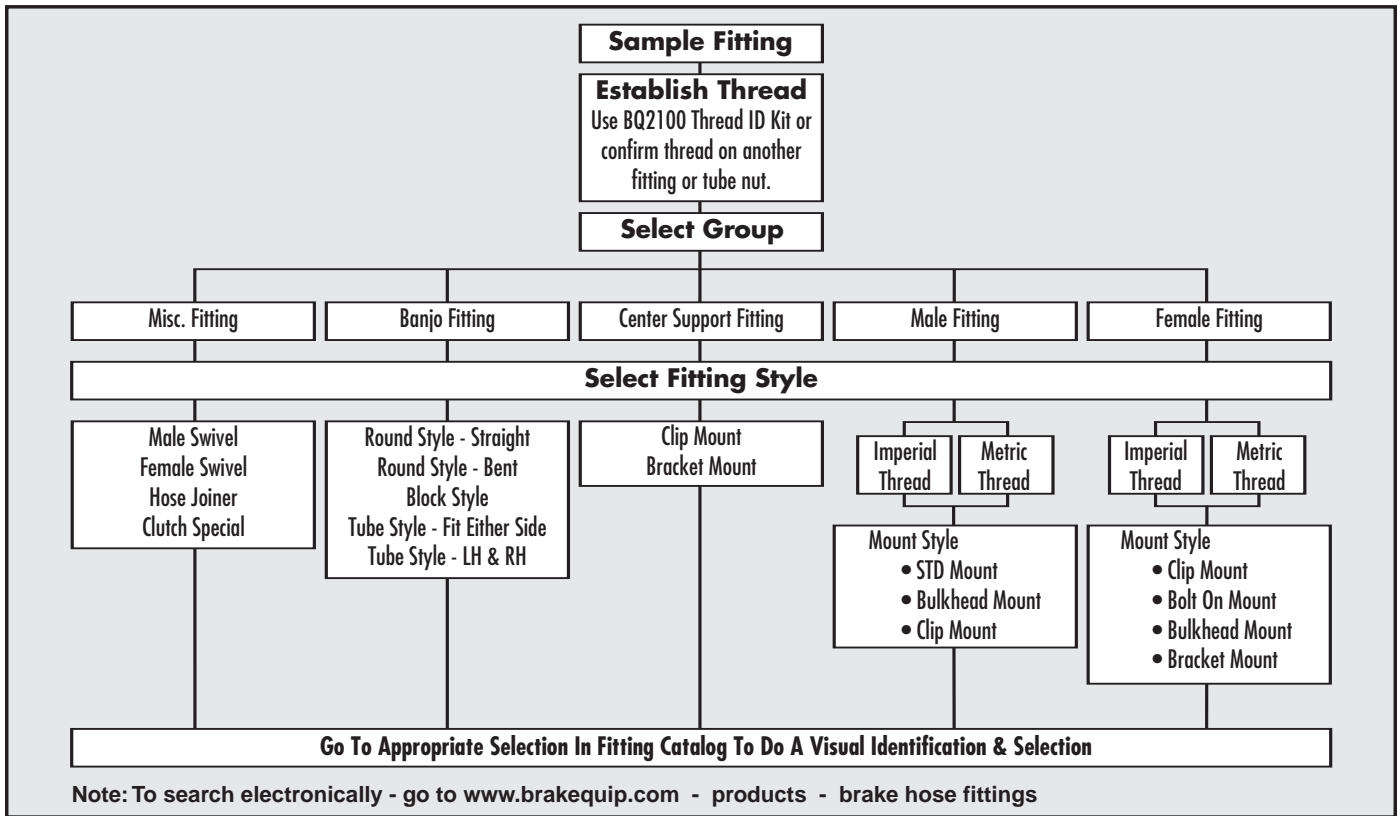
PART NO.	PAGE NO.
HFIF23	29
HFIF24	26
HFIF25	29
HFIF26	27
HFIF27	29
HFIF28	29
HFIF29	27
HFIF30	27
HFIF31	29
HFIF32	27
HFIF32CC	45
HFIF33	27
HFIF33CC	45
HFIF34	29
HFIF34CC	45
HFIF35	27
HFIF35CC	45
HFIF36	27
HFIF36CC	45
HFIF37	29
HFIF38	27
HFIF39	29
HFIF40	27
HFIF41	32
HFIF42	32
HFIF44	32
HFIF45	27
HFIF45CC	45
HFIF46	29
HFIF47	29
HFIF48	29
HFIF51	27
HFIF51CC	45
HFIF52	32
HFIF53	29
HFIF54	29
HFIF55	29
HFIF56	29
HFIF57	30
HFIF58	30
HFIF59	30
HFIF60	32
HFIF63	27
HFIF64	27
HFIF65	27
HFIF66	30
HFIF69	32
HFIF70	32
HFIF71	27
HFIF72	28
HFIF73	28
HFIF74	28
HFIF76	28
HFIF79	28
HFIF81	32
HFIF82	28

PART NO.	PAGE NO.
HFIF83	28
HFIF301	28
HFIF301CC	45
HFIF303	30
HFIF304	32
HFIF306	32
HFIFX01	31, 73
HFIFX01CC	45
HFIFX02	31
HFIFX02CC	45
HFIFX03	31
HFIFX04	31
HFIFX05	31
HFIFX06	31
HFIFX07	31
HFIFX08	31
HFIFX09	31
HFIFX10	31
HFIFX11	31
HFIFX12	31
HFIFX14	31
HFIFX15	31
HFIFX16	31
HFIM01	33, 73
HFIM01B	33
HFIM01CC	45
HFIM01SS	55
HFIM02	34
HFIM02CC	45
HFIM03	33
HFIM03CC	45
HFIM03SS	55
HFIM04	33
HFIM05	34
HFIM06	34
HFIM07	34
HFIM08	33
HFIM09	33
HFIM10	33
HFIM11	33
HFIM12	34
HFIM13	33
HFIM13CC	45
HFIM14	33
HFIM15	33
HFIM16	33
HFIM17	34
HFIM18	33
HFIM19	33
HFIM19CC	45
HFIM19SS	55
HFIM21	33
HFIM22	34
HFIM24	34
HFIM25	34
HFIM26	34

PART NO.	PAGE NO.
HFIM27	34
HFIM28	35
HFIM29	35
HFMF01	36, 73
HFMF01CC	45
HFMF02	36
HFMF02CC	45
HFMF03	36
HFMF03CC	45
HFMF04	36
HFMF04CC	45
HFMF04SS	55
HFMF05	36
HFMF05CC	45
HFMF06	36
HFMF06CC	45
HFMF07	36
HFMF08	36
HFMF08CC	45
HFMF09	36
HFMF09CC	45
HFMF10	36
HFMF11	36
HFMF11CC	45
HFMF12	36
HFMF13	36
HFMF14	36
HFMF14CC	45
HFMF15	36
HFMF15CC	45
HFMF16	37
HFMF16CC	45
HFMF18	40
HFMF19	37
HFMF20	37
HFMF20CC	45
HFMF21	37
HFMF22	42
HFMF24	37
HFMF24CC	45
HFMF25	37
HFMF26	37
HFMF26CC	45
HFMF27	42
HFMF28	37
HFMF28CC	45
HFMF29	37
HFMF30	40
HFMF31	37
HFMF31CC	45
HFMF35	37
HFMF35CC	45
HFMF36	37
HFMF37	37
HFMF38	37

PART NO.	PAGE NO.	PART NO.	PAGE NO.
HFMF38CC	45	HFMM02CC	45
HFMF39	37	HFMM03	43
HFMF39CC	45	HFMM03CC	45
HFMF40	41	HFMM04	43
HFMF41	41	HFMM04CC	45
HFMF42	38	HFMM05	43
HFMF43	38	HFMM05CC	45
HFMF48	40	HFMM06	43
HFMF50	40	HFMM06CC	45
HFMF50CC	45	HFMM06SS	55
HFMF51	38	HFMM08	43
HFMF51CC	45	HFMM09	44
HFMF54	38	HFMM10	44
HFMF55	38	HFMM11	44
HFMF56	38	HFMM11CC	45
HFMF57	38	HFMM12	44
HFMF58	38	HFMM13	43
HFMF59	38	HFMM15	43
HFMF62	38	HFMM17	43
HFMF63	38	HFMM18	44
HFMF65	38	HFMM20	44
HFMF66	38	HFMM21	44
HFMF67	38	HFMM22	43
HFMF68	38	HFMM23	43
HFMF69	40	HFMM24	43
HFMF100	39	HFMM302	44
HFMF100CC	45	HFMM303	44
HFMF305	39	T187-100CN	56
HFMF307	39	T187-25CN	56
HFMF308	39	T250-25CN	56
HFMF311	41	T312-25CN	56
HFMF312	41	T375-25CN	56
HFMF313	41	T187-20SS	56
HFMF315	39	T250-20SS	56
HFMF316	39	T312-20SS	56
HFMF317	41	T375-20SS	56
HFMF318	41	W893106	67
HFMF319	41	W893550	67
HFMF320	41		
HFMF322	40		
HFMF324	41		
HFMF325	41		
HFMF327	39		
HFMF329	39		
HFMF333	39		
HFMF340	39		
HFMF342	40		
HFMF343	40		
HFMFX01	40, 73		
HFMFX01CC	45		
HFMFX02	40		
HFMFX04	40		
HFMFX04CC	45		
HFMM01	43, 73		
HFMM01CC	45		
HFMM02	44		

Identify Fittings



Hose Fitting Numbering System

HF = Hose Fitting (These two letters are used for computer number finding only.)
 Fittings that don't fall into one of the categories below have the prefix HF only.

ABBREVIATION	DESCRIPTION
IM	Imperial Male
MM	Metric Male
IF	Imperial Female
MF	Metric Female
B	Banjo
C	Center Support
IFX	Imperial Female with an external thread mount
MFX	Metric Female with an external thread mount

NOTE: Imperial = American Standard

PREFIX	DESCRIPTION	EXAMPLE
HF01 – HF__	Hose Fittings of a Miscellaneous Nature	
HFIM01 – HFIM__	Male Fittings (Imperial Thread)	
HFMM01 – HFMM__	Male Fittings (Metric Thread)	
HFIF01 – HFIF__	Female Fittings (Imperial Thread)	
HFMF01 – HFMF__	Female Fittings (Metric Thread)	
HFBO1 – HFBO__	Banjo Fittings	
HFC01 – HFC__	Center Support Fittings	
HFIFX01 – HFIFX__	Female Imperial Thread (External Thread)	
HFMTX01 – HFMTX__	Female Metric Thread (External Thread)	
BQ	Any items that are not a crimpable hose fitting	

Identifying the Correct Thread

Worldwide there are only two measuring systems – Metric and Imperial. Some times the imperial measurement is called SAE or American.

Metric systems measure the thread by the distance between two thread pitches expressed in millimeters.

Example: M10 x 1 = The OD of the thread is 10mm and the distance between each thread pitch is 1mm.

Imperial systems measure the number of thread pitches over a one inch length.

Example: 7/16 x 24NS = The OD of the thread is 7/16 and the number of thread pitches over a one inch length is 24.

After some experience of looking at threads a lot and knowing what vehicle the fitting came from, you will be able to determine fitting threads by just looking at them.

Determining if the thread is metric or imperial.

The easiest way is using a thread gauge. BrakeQuip offers a thread

identification kit (BQ2100) for this purpose and covers the majority of threads that you will encounter working with brake plumbing. Another method could be to use a brake hose fitting or tube nut from your stock that you can confirm the thread and size from.

If this fails do the following:

1. Determining the fitting OD

(a) If a male fitting – Measure the OD of the thread. Take into account that this measurement will be slightly under the nominal size. The one size that may trick you up here is 7/16". This will probably measure 11mm. This size is extremely rare so it will probably be the most common 7/16" size which is 7/16" x 24NS.

(b) If a female fitting – Measure the ID of the thread. Compare this measurement at the distance between the “valleys” of opposing pitches with corresponding male fittings.

2. Determining the thread pitch

If it is an imperial size – Count the number of thread pitches over say 1/2" length and then multiply by 2 to get your T.P.I (Threads per Inch)

If is an metric size – Measure the distance between two thread pitches to determine the thread pitch.

Imperial Threads found on braking systems

3/8 x 24NF 7/16 x 24NS 9/16 x 20NS
3/8 x 20BSF 1/2 x 20NF
7/16 x 20NF 9/16 x 18NF

Metric Threads found on braking systems

M9 x 1	M10 x 1.5	M12 x 1.25
M10 x 1	M11 x 1.25	M12 x 1.5
M10 x 1.25	M12 x 1	M14 x 1.5

Abbreviations

NF = National Fine

NS = National Special

BSF = British Standard Fine

Checking the Thread Type



Male & female threads can be checked using the BrakeQuip Thread Gauge #BQ2100

Brake Hose Manufacturing Systems

Make your own legal brake hoses

Systems available to suit all budgets from using your shop press to high volume automatics. Available in selected areas.

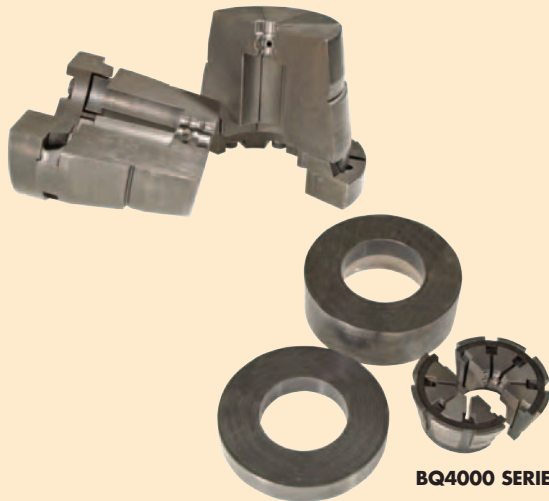
Makes Both OEM
Rubber and Stainless
Steel Braided Hoses



BQ3000 SERIES



BQ5000 SERIES



BQ4000 SERIES



BQ1013
High Pressure Hose Tester



BQ1004
Model BE-05