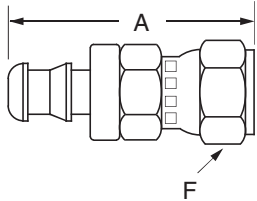


Couplings

Field Attachable 100 'B' Series Barb-Tite

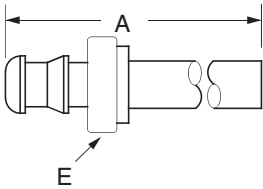
Use Hose H201/Easy Couple

SAE 45° Flare Female Swivel



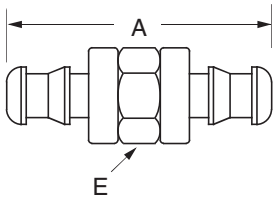
HOSE I.D.	TUBE SIZE	CATALOG NUMBER	THREAD SIZE	A	HOSE CUT-OFF FACTOR†	HOLE DIA.	HEX F
3/8	3/8	10006B-406 ^b	5/8-18	1.62	.88	.297	3/4
3/4	3/4	10012B-412 ^b	1-1/16-14	2.66	1.25	.609	1-1/4

Straight Tube Rigid



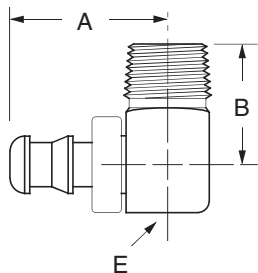
HOSE I.D.	TUBE SIZE	CATALOG NUMBER	TUBE DIA.	A	HOSE CUT-OFF FACTOR†	HOLE DIA.	DIA. E
1/4	3/16	10004B-X03	.188	1.77	1.13	.172	13/32
1/4	1/4	10004B-X04	.250	1.83	1.19	.172	13/32
1/4	5/16	10004B-X05	.312	1.85	1.25	.172	13/32
5/16	5/16	10005B-X05	.312	1.91	1.25	.228	7/16
3/8	3/8	10006B-X06	.375	2.04	1.27	.297	1/2

Hose Mender



HOSE I.D.	CATALOG NUMBER	A	HOSE CUT-OFF FACTOR†	HOLE DIA.	HEX E
1/4	10004B-Y04	1.76	.50	.172	1/2
5/16	10005B-Y05	1.85	.44	.234	9/16
3/8	10006B-Y06	1.97	.44	.297	5/8
1/2	10008B-Y08	2.33	.50	.391	3/4

Male Pipe Rigid 90° Elbow



HOSE I.D.	PIPE SIZE	CATALOG NUMBER	THREAD SIZE	A	B	HOSE CUT-OFF FACTOR†	HOLE DIA.	SQUARE E
5/16	1/8	10005B-C02	1/8-27	1.02	.94	.31	.228	1/2
5/16	1/4	10005B-C04	1/4-18	1.09	.94	.38	.228	9/16
3/8	1/8	10006B-C02	1/8-27	1.08	.94	.38	.297	1/2
3/8	1/4	10006B-C04	1/4-18	1.15	.94	.38	.297	9/16

†To determine the correct length of hose, subtract the cut-off factor for each end fitting from the overall length of assembly.

^b SAE 45° flare connection only.