

MINIATURE CLAMPS - 5/16" BAND

Applications: For marine, agricultural, industrial and automotive uses.
Corrosion resistance varies with stainless components.

Mechanically interlocked, 3 piece construction for service sealing pressure without spot welding.

300 Series

- 1/4" Hex Slotted Carbon Steel Screw
- 5/16" Wide 301 Stainless Steel Band
- Carbon Steel Housing



Dia. Range		Part #	List Price
Min.	Max.		
7/32"	5/8"	300-004	1.06
7/16"	11/16"	300-005	1.24
5/16"	7/8"	300-006	1.06
7/16"	1"	300-008	1.29
1/2"	1-1/16"	300-010	1.29
9/16"	1-1/4"	300-012	1.16
11/16"	1-1/2"	300-016	1.38
7/8"	1-3/4"	300-020	1.37

325 Series

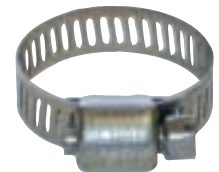
- 1/4" Hex Slotted Carbon Steel Screw
- 5/16" Wide 301 Stainless Steel Band
- 301 Stainless Steel Housing



Dia. Range		Part #	List Price
Min.	Max.		
7/32"	5/8"	325-004	0.69
7/16"	11/16"	325-005	1.42
5/16"	7/8"	325-006	0.77
7/16"	1"	325-008	1.48
1/2"	1-1/16"	325-010	1.48
9/16"	1-1/4"	325-012	1.51
11/16"	1-1/2"	325-016	1.51
7/8"	1-3/4"	325-020	1.54

350 Series

- 1/4" Hex Slotted 410 Stainless Steel Screw
- 5/16" Wide 301 Stainless Steel Band
- 301 stainless Steel Housing



Dia. Range		Part #	List Price
Min.	Max.		
7/32"	5/8"	350-004	0.79
7/16"	11/16"	350-005	1.65
5/16"	7/8"	350-006	0.80
7/16"	1"	350-008	1.50
1/2"	1-1/16"	350-010	1.50
9/16"	1-1/4"	350-012	1.54
11/16"	1-1/2"	350-016	1.54
7/8"	1-3/4"	350-020	1.56

CLAMPS

