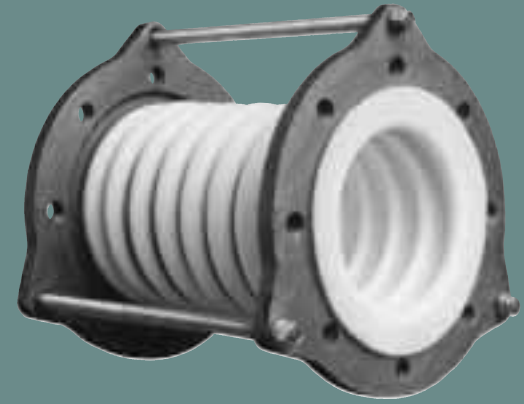


# PROCO™

## STYLE 4408



### eight convolution heavy-duty molded PTFE bellows

TABLE 7

NOMINAL SIZE I.D.	NEUTRAL LENGTH INCHES	MOVEMENT CAPABILITIES BASED ON EIGHT CONVOLUTION DESIGN			SPRING RATE CAPABILITY BASED ON 1" OF MOVEMENT AT ZERO PRESSURE CONDITIONS			EXPANSION JOINT FLANGE DRILLING						PRESSURE AT TEMPERATURE (PSIG) @ °F								VACUUM Hg at Temp.	WEIGHT / LBS		
		± AXIAL (ΔX) MOVEMENT IN	LATERAL (ΔY) DEFLECTION IN	ANGULAR DEFLECTION DEG.	FORCE LBS PER 1" RATED EXTENSION LB/IN	FORCE LBS PER 1" RATED COMPRESSION LB/IN	FORCE LBS PER 1" RATED LATERAL DEFLECTION LB/IN	# HOLES	THREADED HOLE SIZE	BOLT CIRCLE FLANGE "A"	FLANGE THICKNESS	NOMINAL FLANGE DIAMETER	LIMIT BOLT DIAMETER	BOLT CIRCLE LIMIT BOLT "B"	LIMIT BOLT "EAR" O.D.	All units are hydrostatically tested at 1.5 times rated pressure after manufacturing.									
																70°	100°	150°	200°	250°	300°			350°	400°
1.00	4.528	1.339	.787	51	<b>ENGINEERED</b>	<b>PER</b>	<b>SPECIFICATIONS</b>	4	1/2-13	3.125	.551	4.250	.250	5.300	6.102	232	183	150	104	90	75	62	50	<b>NOT DESIGNED FOR VACUUM SERVICE</b>	4
1.25	5.709	1.496	1.024	47				4	1/2-13	3.500	.551	4.625	.250	6.700	7.480	232	183	150	104	90	75	62	50		6
1.50	5.709	1.496	1.024	47				4	1/2-13	3.875	.630	5.000	.250	6.700	7.480	232	183	150	104	90	75	62	50		8
2.00	5.906	1.654	1.063	46				4	5/8-11	4.750	.630	6.000	.250	7.300	8.071	232	183	150	104	90	75	62	50		10
2.50	6.890	1.772	1.102	41				4	5/8-11	5.500	.630	7.000	.250	8.100	8.858	232	183	150	104	90	75	62	50		11
3.00	8.071	1.929	1.181	37				4	5/8-11	6.000	.630	7.500	.250	8.700	9.449	232	183	150	104	90	75	62	50		13
4.00	8.661	2.087	1.220	34				8	5/8-11	7.500	.630	9.000	.250	9.400	10.236	232	183	150	104	90	75	62	50		16
5.00	8.858	2.165	1.260	31				8	3/4-10	8.500	.630	10.000	.375	11.000	11.417	232	183	150	104	90	75	62	50		20
6.00	9.055	2.244	1.339	27				8	3/4-10	9.500	.709	11.000	.375	12.400	13.583	232	183	150	104	90	75	62	50		27
8.00	10.236	2.244	1.378	23				8	3/4-10	11.750	.709	13.500	.375	14.600	15.748	232	183	150	104	90	75	62	50		39
10.00	10.630	2.283	1.457	21				12	7/8-9	14.250	.709	16.000	.375	16.700	17.913	232	183	150	104	90	75	62	50		58
12.00	10.630	2.362	1.496	20				12	7/8-9	17.000	.709	19.000	.375	19.700	21.260	232	183	150	104	90	75	62	50		72
14.00	10.630	2.559	1.575	18	12	1-8	18.750	.787	21.000	.375	22.200	22.244	232	183	150	104	90	75	62	50	88				
16.00	11.024	2.717	1.575	18	16	1-8	21.250	.787	23.500	.375	24.300	25.000	232	183	150	104	90	75	62	50	123				
18.00	11.024	2.913	1.654	16	16	1 1/8-7	22.750	.866	25.000	.375	25.800	27.362	232	183	150	104	90	75	62	50	148				
20.00	11.220	2.913	1.654	16	20	1 1/8-7	25.000	.866	27.500	.375	28.500	29.134	232	183	150	104	90	75	62	50	172				
22.00	11.220	2.953	1.693	15	20	1 1/4-7	27.250	.945	29.500	.375	30.500	31.890	232	183	150	104	90	75	62	50	207				
24.00	11.614	2.953	1.693	13	20	1 1/4-7	29.500	.945	32.000	.375	32.900	34.646	232	183	150	104	90	75	62	50	252				

Larger diameters, custom lengths, and performance requirements available upon request.

Pressure Rating Note:

316 Stainless Steel Anti-Squirm Flanges are available for higher pressure applications. (See Back Cover.)

MATERIALS OF CONSTRUCTION	
DESCRIPTION	STYLE 4408
BELLOWS	WHITE PTFE
FLANGES	DUCTILE IRON
REINFORCING RINGS	304 SS
LIMIT BOLTS	CARBON STEEL
NUTS	CARBON STEEL
INSULATING SLEEVES	POLYETHYLENE
WASHERS	CARBON STEEL / NYLON