

4600 SERIES

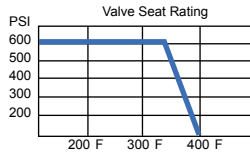
**FULL PORT FORGED BRASS BALL VALVES
HEAVY PATTERN - IPS w/STAINLESS STEEL
HANDLE (600 WOG/150 WSP)**



Designed for residential, commercial and industrial use with water, oil or gas. This approved extra heavy duty forged brass body valve features an extra hard chrome plated brass ball with Teflon® seats. The valve is actuated by a blowout proof stem with a Teflon® seal and features an adjustable packing nut. All sizes feature a vinyl coated stainless steel lever handle for a long corrosion proof life. Assembled and tested in the United States from foreign and domestic components.



**DESIGNED,
BUILT & TESTED
IN THE U.S.A.**



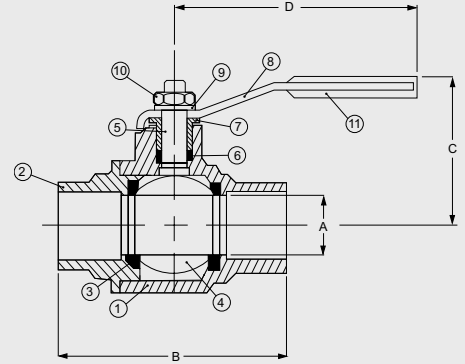
All Teflon® seated valves
*Maximum Temperature is 400°F @ 100 PSI

PRESSURE RATING
600 WOG non-shock
150 WSP

1. Conforms to Federal Spec. WWV-35C
2. Solder ends comply with ANSI B16.18
3. Teflon® seats withstand temperatures from -40°F to 400°F

Teflon® is a registered trademark of Dupont.

1.	BODY	FORGED BRASS (ASTMB283-C37700)
2.	END CAP	FORGED BRASS (ASTMB283-C37700)
3.	SEATS	TEFLON® (PTFE)
4.	BALL	BRASS/HARD CHROME PLATE (4601 & 4602 SERIES IS SS 316)
5.	STEM	BRASS (ASTMB283-C37700) (4601 & 4602 SERIES IS SS 316)
6.	STEM SEAL	TEFLON® (PTFE)
7.	PACKING GLAND	FORGED BRASS (ASTMB283-C37700)
8.	LEVER HANDLE	SS 304
9.	LOCK WASHER	SS 304
10.	NUT	SS 304
11.	HANDLE JACKET	VINYL GRIP



4601 SERIES

STAINLESS STEEL BALL, STEM & LEVER HANDLE

4602 SERIES

STAINLESS STEEL BALL, 90° STEM & LEVER HANDLE

4603 SERIES

H.C.P. BRASS BALL, 90° STEM & SS. LEVER HANDLE

THIS SPACE FOR DESIGNER / ENGINEER APPROVAL

Job/Customer _____ Date _____ Contractor _____

Model Specified _____ Qty _____ Approved By _____

Designer/Engineer _____ Date _____ Contractor's PO # _____

Submitted by _____ Date _____ Other _____

ITEM	SIZE	CTN/CS	A	B	C	D	C _v
46002, 46012, 46022, 46032	1/2	12/72	9/16	2 1/4	1 3/4	4	11.47
46003, 46013, 46023, 46033	3/4	10/60	3/4	2 5/8	2	4	27.01
46004, 46014, 46024, 46034	1	8/32	1	3 1/8	2 1/2	4 7/8	49.30
46005, 46015, 46025, 46035	1 1/4	6/24	1 1/4	3 5/8	2 11/16	4 7/8	114.03
46006, 46016, 46026, 46036	1 1/2	4/12	1 1/2	4 1/16	3 1/4	6 1/4	161.30
46007, 46017, 46027, 46037	2	3/9	2	4 3/4	3 3/8	6 3/8	248.61

Cv The number of gallons of water per minute that pass through the valve at a 1lb pressure drop.

5600 SERIES

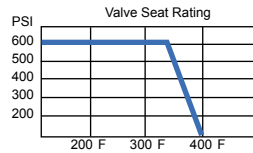
**FULL PORT FORGED BRASS BALL VALVES
HEAVY PATTERN - Cx C w/STAINLESS STEEL
HANDLE (600 WOG/150 WSP)**



Designed for residential, commercial and industrial use with water, oil or gas. This approved Webstone extra heavy duty forged brass body valve features an extra hard chrome plated brass ball with Teflon® seats. The valve is actuated by a blowout proof stem with a Teflon® seal and features an adjustable packing nut. All sizes feature a vinyl coated stainless steel lever handle for a long corrosion proof life. Assembled and tested in the United States from foreign and domestic components.



**DESIGNED,
BUILT & TESTED
IN THE U.S.A.**



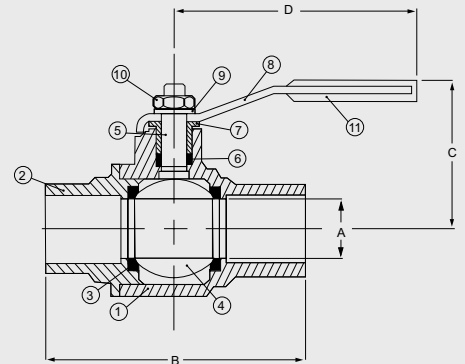
All Teflon® seated valves
*Maximum Temperature is 400°F @ 100 PSI

PRESSURE RATING
600 WOG non-shock
150 WSP

1. Conforms to Federal Spec. WWV-35C
2. Solder ends comply with ANSI B16.18
3. Teflon® seats withstand temperatures from -40°F to 400°F

Teflon® is a registered trademark of Dupont.

1.	BODY	FORGED BRASS (ASTMB283-C37700)
2.	END CAP	FORGED BRASS (ASTMB283-C37700)
3.	SEATS	TEFLON® (PTFE)
4.	BALL	BRASS/HARD CHROME PLATE (5601 & 5602 SERIES IS SS 316)
5.	STEM	BRASS (ASTMB283-C37700) (5601 & 5602 SERIES IS SS 316)
6.	STEM SEAL	TEFLON® (PTFE)
7.	PACKING GLAND	FORGED BRASS (ASTMB283-C37700)
8.	HANDLE	SS 304
9.	LOCK WASHER	SS 304
10.	NUT	SS 304
11.	HANDLE JACKET	VINYL GRIP



5601 SERIES

STAINLESS STEEL BALL, STEM & HANDLE

5602 SERIES

STAINLESS STEEL BALL, 90° STEM & HANDLE

5603 SERIES

H.C.P. BRASS BALL 90° STEM & S.S. HANDLE

THIS SPACE FOR DESIGNER / ENGINEER APPROVAL

Job/Customer _____ Date _____ Contractor _____

Model Specified _____ Qty _____ Approved By _____

Designer/Engineer _____ Date _____ Contractor's PO # _____

Submitted by _____ Date _____ Other _____

ITEM	SIZE	CTN/CS	A	B	C	D	C _v
56002, 56012, 56022, 56032	1/2	12/72	9/16	2 1/4	1 7/8	4	11.47
56003, 56013, 56023, 56033	3/4	10/60	3/4	2 3/4	2	4	27.01
56004, 56014, 56024, 56034	1	8/32	1	3 1/2	2 1/2	4 3/4	49.30
56005, 56015, 56025, 56035	1 1/4	6/24	1 1/4	4 1/4	2 13/16	4 7/8	114.03
56006, 56016, 56026, 56036	1 1/2	4/12	1 1/2	4 9/16	3 1/4	6 3/8	161.30
56007, 56017, 56027, 56037	2	3/9	2	5 1/2	3 1/2	6 3/8	248.61