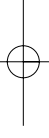


Packing and Gasket Material — Gasket Fabrication — Stripping and Adhesive Backing — Spiral Wound Gaskets — Mechanical Seal Components
Standard O-Rings — Metric O-Rings — O-Ring Kits — O-Ring Cord — Vulcanizing — Custom Rubber Fabrication — Hydraulic Seals — Pressure Gauges
Industrial Hose Couplings — Clamping and Banding Systems — Industrial Glass — Glass Fabrication — Plastic Products — Adhesives and Sealants



Industrial Hose Coupling Catalog

featuring **EVER-TITE**
COUPLING PRODUCTS



www.callapg.com

713-675-5271
1-800-888-5223

FAX 713-675-2730
FAX 1-800-444-3252



Our Policy

Prices

Prices quoted are for acceptance within thirty days from date quoted. Unless specified, prices are based on our receiving order for quantities quoted.

Terms

Our terms of payment are 1% 10, net 30 days, unless other arrangements are made through our credit department.

Minimum Invoice

Orders consisting of O-Rings Only - \$5.00

Orders consisting of O-Rings and/or All Other Products (Excluding Plastic Products) - \$15.00

City Sales Counter - \$35.00

Plastic Products - \$50.00

Warranty

Products are warranted against defects in workmanship and defects in material. Products having such defects will be replaced or credited as APG elects. Liability is limited to the invoice value of the defective item. Our responsibility shall not exceed the original purchase price of the defective product. In any event, APG shall not be held responsible for any special or consequential damages. In all cases, please contact us for approval and routing of return items. All claims of shortage or damage must be made within 30 days after receipt of shipment.

Freight

All orders totaling less than \$1500 at NET prices are F.O.B. our warehouse with no freight allowance. Orders totaling \$1500 or more at NET prices, any product mix, receive full freight prepaid and allowed, provided such orders are for one shipment within the lower 48 continental United States and provided our normal freight modes are used. Special delivery charges incurred at the customer's request are for the customer's account. Exceptions to this freight prepaid and allowed policy: all glass products. These products are F.O.B. our warehouse with no freight allowance unless other items on the order total \$1500 or more at NET prices.

Catalog Information

Various information sources were used to compile this catalog. We offer this information only as a guide and cannot assume responsibility for accuracy of the data herein. Prices listed are current, subject to change.



Product Index

8000 Series Dry Disconnect Couplings	11	Hydraulic Hose Couplings	31
90° Coupler with Check Valve.....	18	IDEAL Clamps	61-65
90° Parts	18, 22	Increases/Reducers	21
A.N.S.I. Class 150 Flange Couplings	18	Locking Handle Couplers	12, 13
Accessories for Cam and Groove Couplings	24-25	Long Shank Hose Couplings	34
Adapter Caps.....	19	Male Stems - Collared & Band Style.....	38
ASA Flange Couplings.....	18	Material Recommendations	69-70
Ball Valves	42-43	Menders.....	26
BAND-IT® Products	50-60	Military Specification Couplings	10
Bleed-Off Couplers	12	Nipples, Combination.....	26
Butt Weld Couplings.....	17	Nipples, Full Flow.....	60
Cable Ties	65	No. 99 Elbow Couplings	23
Cam and Groove Couplings	2-25	No. 99 Tight-Fill Couplings	23
Clamps, Double Bolt	48	Nozzles, Hose	38
Clamps, Heavy Duty	48	Overlocking Handles for Dust Caps	24
Clamps, High Pressure	48	Perma-TITE® Permanently Attached Coupling System	14
Clamps, IDEAL.....	61-65	Pinlug Hose Shank Couplings	32
Clamps, Spiral	49	Positive-Locking Handle Couplers	12
Clamps, Universal	48	Pressure Gauges	66-68
Clamps, Worm Gear	61-64	Protective Sleeving	44-45
Clamp-TITE™ Repair Kits	15	Push-On Hose Barb Fittings	37
Color Codes for Cam and Groove Gaskets.....	25	Quick Disconnect Couplers and Plugs	40
Combination Nipples	26	Reducers	21, 29
Compression Gauge Cock.....	47	Safety Cables.....	25
Conbraco Water Gauges	46-47	Sand Blast Couplings.....	30
Coupler/Adapter with Relief Nipple	19	Short Shank Hose Couplings	35
Coupler/Adapters	19-20	Sleeving, Protective	44-45
Crimp Sleeves	14	Socket Weld Couplings	17
Crimping	14	Spanner Wrenches	32
Crowfoot Couplings, Universal.....	27	Spiral Clamps	49
Double-Locking Handle Couplers	12	Spool Adapter with Relief Nipple	19
Dry Disconnect Couplings	11	Spool Adapters	19, 20
EVER-TITE® Cam and Groove Couplings	2-24	Spool Couplers	20
EVER-TITE® Locking Handle Couplers	12	Standard Hose Barb Fittings	36
Ferrules	14	Strainers	39
Fill-Pipe Adapters	19	Swaging.....	14
Flange Couplings.....	18	Swivel Couplers	15
Foot Valves	39	Swivel-TITE® Couplers	15
Gasket Color Codes.....	25	Tank Truck Flange Couplings	16
Gaskets for Cam and Groove Couplings	25	Tough-TITE™ Cam and Groove Couplings.....	2-24
Gate Valves	43	Tough-TITE™ Locking Handle Couplers	13
Gauge Cock, Compression	47	Universal Crowfoot Couplings	27
Gauges, Pressure.....	66-68	U-TITE Cam and Groove Couplings	2-9
Gauges, Water	46-47	Valves, Ball.....	42, 43
Ground Joint Couplings	33	Valves, Foot	39
Handle Assemblies	24	Valves, Gate.....	43
Handwheels.....	29	Vapor-Recovery System Parts	18
Heavy Duty Couplings	16	Water Gauges.....	46-47
Hex Nipples	28	Working Pressures, Cam and Groove Couplings	13
Hose Barb Fittings	36-37	Worm Gear Clamps	61-64
Hose Nozzles.....	38	Wrenches.....	29, 32
Hose Shank Couplings, Pinlug.....	32		
Hydrant Adapters.....	28		
Hydrant Wrench.....	29		

The complete APG Product Line is listed on pages 71 and 72



Cam and Groove Couplings

Part A

Male Adapter x Female Thread

- NPT Standard
- BSP, BST & NPSM Available

EVER-TITE® Premium Cam and Groove Couplings				
Size	Aluminum	Forged Brass	316 Stainless Steel	Polypropylene
1/2"	305AAL	305ABR	305ASS	*305APP
3/4"	307AAL	307ABR	307ASS	307APP
1"	310AAL	310ABR	310ASS	310APP
1-1/4"	312AAL	312ABR	312ASS	°312APP
1-1/2"	315AAL	315ABR	315ASS	315APP
2"	320AAL	320ABR	320ASS	320APP
2-1/2"	325AAL	325ABR	325ASS	-
3"	330AAL	330ABR	330ASS	330APP
4"	340AAL	340ABR	340ASS	340APP
5"	350AAL	†350ARB	350ASS	-
6"	360AAL	†360ARB	360ASS	-
8"	ΔΔ380AAL	-	-	-



EVER-TITE® Couplings also Available in
Hard Coat or Anodized Aluminum,
Monel, Hastalloy C, and Carpenter 20®

†5" and 6" are Red Brass.

* on 1/2" size, the coupler and adapter portion is to the 3/4" standard.

° on 1-1/4" size, the coupler and adapter portion is to the 1-1/2" standard.

ΔΔ 8" Part is compatible with Dixon "Andrews" and NECO

Tough-TITE™ Industrial Cam and Groove Couplings						
Size	Aluminum	Brass	316 Stainless Steel	Ductile Iron	Nylon	Polypropylene
1/2"	3E05AAL	3E05ACB	3E05ASS	-	*3E05ANY	*3E05APP
3/4"	3E07AAL	3E07ACB	3E07ASS	-	3E07ANY	3E07APP
1"	3E10AAL	3E10ACB	3E10ASS	-	3E10ANY	3E10APP
1-1/4"	3E12AAL	3E12ACB	3E12ASS	-	°3E12ANY	°3E12APP
1-1/2"	3E15AAL	3E15ACB	3E15ASS	3E15ADI	3E15ANY	3E15APP
2"	3E20AAL	3E20ACB	3E20ASS	3E20ADI	3E20ANY	3E20APP
2-1/2"	3E25AAL	3E25ACB	3E25ASS	-	-	-
3"	3E30AAL	3E30ACB	3E30ASS	3E30ADI	3E30ANY	3E30APP
4"	3E40AAL	3E40ACB	3E40ASS	3E40ADI	3E40ANY	3E40APP
5"	3E50AAL	3E50ACB	-	-	-	-
6"	3E60AAL	3E60ACB	3E60ASS	-	-	-
8"	ΔΔ3E80AALA	-	-	-	-	-



* on 1/2" size, the coupler and adapter portion is to the 3/4" standard.

° on 1-1/4" size, the coupler and adapter portion is to the 1-1/2" standard.

ΔΔ 8" Part is compatible with Dixon "Andrews" and NECO

U-TITE Utility Cam and Groove Couplings		
Size	Aluminum	316 Stainless Steel
1-1/2"	3U15AAL	3U15ASS
2"	3U20AAL	3U20ASS
3"	3U30AAL	3U30ASS
4"	3U40AAL	3U40ASS





Cam and Groove Couplings

Part B Female Coupler x Male Thread

- NPT Standard
- BSP & BST Available

EVER-TITE® Premium Cam and Groove Couplings				
Size	Aluminum	Forged Brass	316 Stainless Steel	Polypropylene (Stainless Steel Handles)
1/2"	305BAL	305BBR	305BSS	*305BPP
3/4"	307BAL	307BBR	307BSS	307BPP
1"	310BAL	310BBR	310BSS	310BPP
1-1/4"	312BAL	312BBR	312BSS	°312BPP
1-1/2"	315BAL	315BBR	315BSS	315BPP
2"	320BAL	320BBR	320BSS	320BPP
2-1/2"	325BAL	325BBR	325BSS	-
3"	330BAL	330BBR	330BSS	330BPP
4"	340BAL	340BBR	340BSS	340BPP
5"	350BAL	†350BRB	350BSS	-
6"	360BAL	†360BRB	360BSS	-
8"	ΔΔ380BAL	-	-	-



Investment Cast Stainless Steel Handles
Standard on EVER-TITE® Aluminum
Couplers (Brass Handles Available)

EVER-TITE® Couplings also Available in
Hard Coat or Anodized Aluminum,
Monel, Hastalloy C, and Carpenter 20®

†5" and 6" are Red Brass.

* on 1/2" size, the coupler and adapter portion is to the 3/4" standard.

° on 1-1/4" size, the coupler and adapter portion is to the 1-1/2" standard.

ΔΔ 8" Part has 4-handle design and is compatible with Dixon "Andrews" and NECO

Tough-TITE™ Industrial Cam and Groove Couplings						
Size	Aluminum	Brass	316 Stainless Steel	Ductile Iron	Nylon (Stainless Steel Handles)	Polypropylene (Stainless Steel Handles)
1/2"	3E05BAL	3E05BCB	3E05BSS	-	*3E05BNY	*3E05BPP
3/4"	3E07BAL	3E07BCB	3E07BSS	-	3E07BNY	3E07BPP
1"	3E10BAL	3E10BCB	3E10BSS	-	3E10BNY	3E10BPP
1-1/4"	3E12BAL	3E12BCB	3E12BSS	-	°3E12BNY	°3E12BPP
1-1/2"	3E15BAL	3E15BCB	3E15BSS	3E15BDI	3E15BNY	3E15BPP
2"	3E20BAL	3E20BCB	3E20BSS	3E20BDI	3E20BNY	3E20BPP
2-1/2"	3E25BAL	3E25BCB	3E25BSS	-	-	-
3"	3E30BAL	3E30BCB	3E30BSS	3E30BDI	3E30BNY	3E30BPP
4"	3E40BAL	3E40BCB	3E40BSS	3E40BDI	3E40BNY	3E40BPP
5"	3E50BAL	3E50BCB	-	-	-	-
6"	3E60BAL	3E60BCB	3E60BSS	-	-	-
8"	-	-	-	-	-	-



Brass Handles Standard
on Tough-Tite™ Aluminum
Couplers

* on 1/2" size, the coupler and adapter portion is to the 3/4" standard.

° on 1-1/4" size, the coupler and adapter portion is to the 1-1/2" standard.

U-TITE Utility Cam and Groove Couplings		
Size	Aluminum	316 Stainless Steel
1-1/2"	3U15BAL	3U15BSS
2"	3U20BAL	3U20BSS
3"	3U30BAL	3U30BSS
4"	3U40BAL	3U40BSS



Brass Handles Standard on U-TITE Aluminum Couplers



Cam and Groove Couplings

Part C

Female Coupler x Hose Shank

EVER-TITE® Premium Cam and Groove Couplings				
Size	Aluminum	Forged Brass	316 Stainless Steel	Polypropylene (Stainless Steel Handles)
1/2"	305CAL	305CBR	305CSS	*305CPP
3/4"	307CAL	307CBR	307CSS	307CPP
1"	°310CAL	310CBR	310CSS	310CPP
1-1/4"	312CAL	312CBR	312CSS	°312CPP
1-1/2"	°315CAL	315CBR	315CSS	315CPP
2"	°320CAL	320CBR	320CSS	320CPP
2-1/2"	°325CAL	325CBR	325CSS	-
3"	°330CAL	330CBR	330CSS	330CPP
4"	°340CAL	340CBR	340CSS	340CPP
5"	°350CAL	†350CRB	350CSS	-
6"	°360CAL	†360CRB	360CSS	-
8"	°°380CAL	-	-	-



**Investment Cast Stainless Steel Handles
Standard on EVER-TITE® Aluminum
Couplers (Brass Handles Available)**

**EVER-TITE® Couplings also Available in
Hard Coat or Anodized Aluminum
Monel, Hastalloy C, and Carpenter 20®**

° 1", 1-1/2", 2", 2-1/2", 3", 4", 5" and 6" aluminum parts have machined shanks.

† 5" and 6" are Red Brass.

* on 1/2" size, the coupler and adapter portion is to the 3/4" standard.

° on 1-1/4" size, the coupler and adapter portion is to the 1-1/2" standard.

°° 8" Part has 4-handle design and is compatible with Dixon "Andrews" and NECO.

Tough-TITE™ Industrial Cam and Groove Couplings						
Size	Aluminum	Brass	316 Stainless Steel	Ductile Iron	Nylon (Stainless Steel Handles)	Polypropylene (Stainless Steel Handles)
1/2"	3E05CAL	3E05CCB	3E05CSS	-	*3E05CNY	*3E05CPP
3/4"	3E07CAL	3E07CCB	3E07CSS	-	3E07CNY	3E07CPP
1"	3E10CAL	3E10CCB	3E10CSS	-	3E10CNY	3E10CPP
1-1/4"	3E12CAL	3E12CCB	3E12CSS	-	°3E12CNY	°3E12CPP
1-1/2"	3E15CAL	3E15CCB	3E15CSS	3E15CDI	3E15CNY	3E15CPP
2"	3E20CAL	3E20CCB	3E20CSS	3E20CDI	3E20CNY	3E20CPP
2-1/2"	3E25CAL	3E25CCB	3E25CSS	-	-	-
3"	3E30CAL	3E30CCB	3E30CSS	3E30CDI	3E30CNY	3E30CPP
4"	3E40CAL	3E40CCB	3E40CSS	3E40CDI	3E40CNY	3E40CPP
5"	3E50CAL	3E50CCB	-	-	-	-
6"	3E60CAL	3E60CCB	3E60CSS	-	-	-
8"	°°3E80CALA	-	-	-	-	-



**Brass Handles Standard
on Tough-Tite™
Aluminum Couplers**

* on 1/2" size, the coupler and adapter portion is to the 3/4" standard.

° on 1-1/4" size, the coupler and adapter portion is to the 1-1/2" standard.

°° 8" Part has 4-handle design and is compatible with Dixon "Andrews" and NECO.

U-TITE Utility Cam and Groove Couplings		
Size	Aluminum	316 Stainless Steel
1-1/2"	3U15CAL	3U15CSS
2"	3U20CAL	3U20CSS
3"	3U30CAL	3U30CSS
4"	3U40CAL	3U40CSS



Brass Handles Standard on U-TITE Aluminum Couplers



Cam and Groove Couplings

Part D

Female Coupler x Hose Shank
-NPT Standard
-BSP, BST, & NPSM Available

EVER-TITE® Premium Cam and Groove Couplings				
Size	Aluminum	Forged Brass	316 Stainless Steel	Polypropylene (Stainless Steel Handles)
1/2"	305DAL	305DBR	305DSS	*305DPP
3/4"	307DAL	307DBR	307DSS	307DPP
1"	310DAL	310DBR	310DSS	310DPP
1-1/4"	312DAL	312DBR	312DSS	312DPP
1-1/2"	315DAL	315DBR	315DSS	315DPP
2"	320DAL	320DBR	320DSS	320DPP
2-1/2"	325DAL	325DBR	325DSS	-
3"	330DAL	330DBR	330DSS	330DPP
4"	340DAL	340DBR	340DSS	340DPP
5"	350DAL	†350DRB	350DSS	-
6"	360DAL	†360DRB	360DSS	-
8"	ΔΔ380DAL	-	-	-



Investment Cast Stainless Steel Handles
Standard on EVER-TITE® Aluminum
Couplers (Brass Handles Available)

EVER-TITE® Couplings also Available in
Hard Coat or Anodized Aluminum
Monel, Hastalloy C, and Carpenter 20®

†5" and 6" are Red Brass.

* on 1/2" size, the coupler and adapter portion is to the 3/4" standard.

° on 1-1/4" size, the coupler and adapter portion is to the 1-1/2" standard.

ΔΔ 8" Part has 4-handle design and is compatible with Dixon "Andrews" and NECO.

Tough-TITE™ Industrial Cam and Groove Couplings						
Size	Aluminum	Brass	316 Stainless Steel	Ductile Iron	Nylon (Stainless Steel Handles)	Polypropylene (Stainless Steel Handles)
1/2"	3E05DAL	3E05DCB	3E05DSS	-	*3E05DNY	*3E05DPP
3/4"	3E07DAL	3E07DCB	3E07DSS	-	3E07DNY	3E07DPP
1"	3E10DAL	3E10DCB	3E10DSS	-	3E10DNY	3E10DPP
1-1/4"	3E12DAL	3E12DCB	3E12DSS	-	°3E12DNY	°3E12DPP
1-1/2"	3E15DAL	3E15DCB	3E15DSS	3E15DDI	3E15DNY	3E15DPP
2"	3E20DAL	3E20DCB	3E20DSS	3E20DDI	3E20DNY	3E20DPP
2-1/2"	3E25DAL	3E25DCB	3E25DSS	-	-	-
3"	3E30DAL	3E30DCB	3E30DSS	3E30DDI	3E30DNY	3E30DPP
4"	3E40DAL	3E40DCB	3E40DSS	3E40DDI	3E40DNY	3E40DPP
5"	3E50DAL	3E50DCB	-	-	-	-
6"	3E60DAL	3E60DCB	3E60DSS	-	-	-
8"	ΔΔ3E80DALA	-	-	-	-	-



Brass Handles Standard
on Tough-TITE™
Aluminum Couplers

* on 1/2" size, the coupler and adapter portion is to the 3/4" standard.

° on 1-1/4" size, the coupler and adapter portion is to the 1-1/2" standard.

ΔΔ 8" Part has 4-handle design and is compatible with Dixon "Andrews" and NECO.

U-TITE Utility Cam and Groove Couplings		
Size	Aluminum	316 Stainless Steel
1-1/2"	3U15DAL	3U15DSS
2"	3U20DAL	3U20DSS
3"	3U30DAL	3U30DSS
4"	3U40DAL	3U40DSS



Brass Handles Standard on U-TITE Aluminum Couplers



Cam and Groove Couplings

Part E

Male Adapter x Hose Shank

EVER-TITE® Premium Cam and Groove Couplings				
Size	Aluminum	Forged Brass	316 Stainless Steel	Polypropylene
1/2"	305EAL	305EBR	305ESS	*305EPP
3/4"	307EAL	307EBR	307ESS	307EPP
1"	°310EAL	310EBR	310ESS	310EPP
1-1/4"	312EAL	312EBR	312ESS	°312EPP
1-1/2"	°315EAL	315EBR	315ESS	315EPP
2"	°320EAL	320EBR	320ESS	320EPP
2-1/2"	°325EAL	325EBR	325ESS	-
3"	°330EAL	330EBR	330ESS	330EPP
4"	°340EAL	340EBR	340ESS	340EPP
5"	°350EAL	°350ERB	350ESS	-
6"	°360EAL	°360ERB	360ESS	-
8"	°°380EAL	-	-	-



EVER-TITE® Couplings also Available in
Hard Coat or Anodized Aluminum
Monel, Hastalloy C, and Carpenter 20®

* 1", 1-1/2", 2", 2-1/2", 3", 4", 5" and 6" aluminum parts have machined shanks.
° 5" and 6" are Red Brass.

* on 1/2" size, the coupler and adapter portion is to the 3/4" standard.

° on 1-1/4" size, the coupler and adapter portion is to the 1-1/2" standard.

°° 8" Part is compatible with Dixon "Andrews" and NECO.

Tough-TITE™ Industrial Cam and Groove Couplings						
Size	Aluminum	Brass	316 Stainless Steel	Ductile Iron	Nylon	Polypropylene
1/2"	3E05EAL	3E05ECB	3E05ESS	-	*3E05ENY	*3E05EPP
3/4"	3E07EAL	3E07ECB	3E07ESS	-	3E07ENY	3E07EPP
1"	3E10EAL	3E10ECB	3E10ESS	-	3E10ENY	3E10EPP
1-1/4"	3E12EAL	3E12ECB	3E12ESS	-	°3E12ENY	°3E12EPP
1-1/2"	3E15EAL	3E15ECB	3E15ESS	3E15EDI	3E15ENY	3E15EPP
2"	3E20EAL	3E20ECB	3E20ESS	3E20EDI	3E20ENY	3E20EPP
2-1/2"	3E25EAL	3E25ECB	3E25ESS	-	-	-
3"	3E30EAL	3E30ECB	3E30ESS	3E30EDI	3E30ENY	3E30EPP
4"	3E40EAL	3E40ECB	3E40ESS	3E40EDI	3E40ENY	3E40EPP
5"	3E50EAL	3E50ECB	-	-	-	-
6"	3E60EAL	3E60ECB	3E60ESS	-	-	-
8"	°°3E80EALA	-	-	-	-	-



* on 1/2" size, the coupler and adapter portion is to the 3/4" standard.

° on 1-1/4" size, the coupler and adapter portion is to the 1-1/2" standard.

°° 8" Part is compatible with Dixon "Andrews" and NECO.

U-TITE Utility Cam and Groove Couplings		
Size	Aluminum	316 Stainless Steel
1-1/2"	3U15EAL	3U15ESS
2"	3U20EAL	3U20ESS
3"	3U30EAL	3U30ESS
4"	3U40EAL	3U40ESS





Cam and Groove Couplings

Part F

Male Adapter x Male Thread
-NPT Standard
-BSP, BST, & NPSM Available

EVER-TITE® Premium Cam and Groove Couplings				
Size	Aluminum	Forged Brass	316 Stainless Steel	Polypropylene
1/2"	305FAL	305FBR	305FSS	*305FPP
3/4"	307FAL	307FBR	307FSS	307FPP
1"	310FAL	310FBR	310FSS	310FPP
1-1/4"	312FAL	312FBR	312FSS	312FPP
1-1/2"	315FAL	315EBR	315FSS	315FPP
2"	320FAL	320FBR	320FSS	320FPP
2-1/2"	325FAL	325FBR	325FSS	-
3"	330FAL	330FBR	330FSS	330FPP
4"	340FAL	340FBR	340FSS	340FPP
5"	350FAL	†350FRB	350FSS	-
6"	360FAL	†360FRB	360FSS	-
8"	ΔΔ380FAL	-	-	-



EVER-TITE® Couplings also Available in
Hard Coat or Anodized Aluminum
Monel, Hastalloy C, and Carpenter 20®

†5" and 6" are Red Brass.

* on 1/2" size, the coupler and adapter portion is to the 3/4" standard.

° on 1-1/4" size, the coupler and adapter portion is to the 1-1/2" standard.

ΔΔ 8" Part is compatible with Dixon "Andrews" and NECO.

Tough-TITE™ Industrial Cam and Groove Couplings						
Size	Aluminum	Brass	316 Stainless Steel	Ductile Iron	Nylon	Polypropylene
1/2"	3E05FAL	3E05FCB	3E05FSS	-	*3E05FNY	*3E05FPP
3/4"	3E07FAL	3E07FCB	3E07FSS	-	3E07FNY	3E07FPP
1"	3E10FAL	3E10FCB	3E10FSS	-	3E10FNY	3E10FPP
1-1/4"	3E12FAL	3E12FCB	3E12FSS	-	°3E12FNY	°3E12FPP
1-1/2"	3E15FAL	3E15FCB	3E15FSS	3E15FDI	3E15FNY	3E15FPP
2"	3E20FAL	3E20FCB	3E20FSS	3E20FDI	3E20FNY	3E20FPP
2-1/2"	3E25FAL	3E25FCB	3E25FSS	-	-	-
3"	3E30FAL	3E30FCB	3E30FSS	3E30FDI	3E30FNY	3E30FPP
4"	3E40FAL	3E40FCB	3E40FSS	3E40FDI	3E40FNY	3E40FPP
5"	3E50FAL	3E50FCB	-	-	-	-
6"	3E60FAL	3E60FCB	3E60FSS	-	-	-
8"	ΔΔ3E80FALA	-	-	-	-	-



* on 1/2" size, the coupler and adapter portion is to the 3/4" standard.

° on 1-1/4" size, the coupler and adapter portion is to the 1-1/2" standard.

ΔΔ 8" Part is compatible with Dixon "Andrews" and NECO.

U-TITE Utility Cam and Groove Couplings		
Size	Aluminum	316 Stainless Steel
1-1/2"	3U15FAL	3U15FSS
2"	3U20FAL	3U20FSS
3"	3U30FAL	3U30FSS
4"	3U40FAL	3U40FSS



Note: If a dash (-) appears in lieu of a published part number, please inquire regarding current availability.



Cam and Groove Couplings

Part DC

Dust Cap

EVER-TITE® Premium Cam and Groove Couplings				
Size	Aluminum	Forged Brass	316 Stainless Steel	Polypropylene (Stainless Steel Handles)
1/2"	305DCAL	305DCBR	305DCSS	*305DCPP
3/4"	307DCAL	307DCBR	307DCSS	307DCPP
1"	310DCAL	310DCBR	310DCSS	310DCPP
1-1/4"	312DCAL	312DCBR	312DCSS	°312DCPP
1-1/2"	315DCAL	315DCBR	315DCSS	315DCPP
2"	320DCAL	320DCBR	320DCSS	320DCPP
2-1/2"	325DCAL	325DCBR	325DCSS	-
3"	330DCAL	330DCBR	330DCSS	330DCPP
4"	340DCAL	340DCBR	340DCSS	340DCPP
5"	350DCAL	†350DCRB	350DCSS	-
6"	360DCAL	†360DCRB	360DCSS	-
8"	ΔΔ380DCAL	-	-	-



Investment Cast Stainless Steel Handles Standard on EVER-TITE® Aluminum Couplers (Brass Handles Available)

EVER-TITE® Couplings also Available in Hard Coat or Anodized Aluminum Monel, Hastalloy C, and Carpenter 20®

†5" and 6" are Red Brass.

* on 1/2" size, the coupler and adapter portion is to the 3/4" standard.

° on 1-1/4" size, the coupler and adapter portion is to the 1-1/2" standard.

ΔΔ 8" Part has 4-handle design and is compatible with Dixon "Andrews" and NECO.

Tough-TITE™ Industrial Cam and Groove Couplings						
Size	Aluminum	Brass	316 Stainless Steel	Ductile Iron	Nylon (Stainless Steel Handles)	Polypropylene (Stainless Steel Handles)
1/2"	3E05DCAL	3E05DCCB	3E05DCSS	-	*3E05DCNY	*3E05DCPP
3/4"	3E07DCAL	3E07DCCB	3E07DCSS	-	3E07DCNY	3E07DCPP
1"	3E10DCAL	3E10DCCB	3E10DCSS	-	3E10DCNY	3E10DCPP
1-1/4"	3E12DCAL	3E12DCCB	3E12DCSS	-	°3E12DCNY	°3E12DCPP
1-1/2"	3E15DCAL	3E15DCCB	3E15DCSS	3E15DCDI	3E15DCNY	3E15DCPP
2"	3E20DCAL	3E20DCCB	3E20DCSS	3E20DCDI	3E20DCNY	3E20DCPP
2-1/2"	3E25DCAL	3E25DCCB	3E25DCSS	-	-	-
3"	3E30DCAL	3E30DCCB	3E30DCSS	3E30DCDI	3E30DCNY	3E30DCPP
4"	3E40DCAL	3E40DCCB	3E40DCSS	3E40DCDI	3E40DCNY	3E40DCPP
5"	3E50DCAL	3E50DCCB	-	-	-	-
6"	3E60DCAL	3E60DCCB	3E60DCSS	-	-	-
8"	ΔΔ3E80DCALA	-	-	-	-	-



Brass Handles Standard on Tough-TITE™ Aluminum Couplers

* on 1/2" size, the coupler and adapter portion is to the 3/4" standard.

° on 1-1/4" size, the coupler and adapter portion is to the 1-1/2" standard.

ΔΔ 8" Part has 4-handle design and is compatible with Dixon "Andrews" and NECO.

U-TITE Utility Cam and Groove Couplings		
Size	Aluminum	316 Stainless Steel
1-1/2"	3U15DCAL	3U15DCSS
2"	3U20DCAL	3U20DCSS
3"	3U30DCAL	3U30DCSS
4"	3U40DCAL	3U40DCSS



Brass Handles Standard on U-TITE Aluminum Couplers



Cam and Groove Couplings

Part DP

Dust Plug
Not to be used in pressure applications

EVER-TITE® Premium Cam and Groove Couplings				
Size	Aluminum	Forged Brass	316 Stainless Steel	Polypropylene
1/2"	305DPAL	305DPBR	305DPSS	*305DPPP
3/4"	307DPAL	307DPBR	307DPSS	307DPPP
1"	310DPAL	310DPBR	310DPSS	310DPPP
1-1/4"	312DPAL	312DPBR	312DPSS	°312DPPP
1-1/2"	315DPAL	315DPBR	315DPSS	315DPPP
2"	320DPAL	320DPBR	320DPSS	320DPPP
2-1/2"	325DPAL	325DPBR	325DPSS	-
3"	330DPAL	330DPBR	330DPSS	330DPPP
4"	340DPAL	340DPBR	340DPSS	340DPPP
5"	350DPAL	†350DPRB	350DPSS	-
6"	360DPAL	†360DPRB	360DPSS	-
8"	ΔΔ380DPAL	-	-	-



**EVER-TITE® Couplings also Available in
Hard Coat or Anodized Aluminum
Monel, Hastalloy C, and Carpenter 20®**

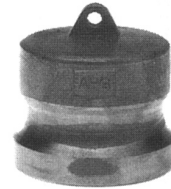
†5" and 6" are Red Brass.

* on 1/2" size, the coupler and adapter portion is to the 3/4" standard.

° on 1-1/4" size, the coupler and adapter portion is to the 1-1/2" standard.

ΔΔ 8" Part is compatible with Dixon "Andrews" and NECO.

Tough-TITE™ Industrial Cam and Groove Couplings						
Size	Aluminum	Brass	316 Stainless Steel	Ductile Iron	Nylon	Polypropylene
1/2"	3E05DPAL	3E05DPCB	3E05DPSS	-	*3E05DPNY	*3E05DPPP
3/4"	3E07DPAL	3E07DPCB	3E07DPSS	-	3E07DPNY	3E07DPPP
1"	3E10DPAL	3E10DPCB	3E10DPSS	-	3E10DPNY	3E10DPPP
1-1/4"	3E12DPAL	3E12DPCB	3E12DPSS	-	-	-
1-1/2"	3E15DPAL	3E15DPCB	3E15DPSS	3E15DPDI	3E15DPNY	3E15DPPP
2"	3E20DPAL	3E20DPCB	3E20DPSS	3E20DPDI	3E20DPNY	3E20DPPP
2-1/2"	3E25DPAL	3E25DPCB	3E25DPSS	-	-	-
3"	3E30DPAL	3E30DPCB	3E30DPSS	3E30DPDI	3E30DPNY	3E30DPPP
4"	3E40DPAL	3E40DPCB	3E40DPSS	3E40DPDI	3E40DPNY	3E40DPPP
5"	3E50DPAL	3E50DPCB	-	-	-	-
6"	3E60DPAL	3E60DPCB	3E60DPSS	-	-	-
8"	-	-	-	-	-	-



* on 1/2" size, the coupler and adapter portion is to the 3/4" standard.

U-TITE Utility Cam and Groove Couplings		
Size	Aluminum	316 Stainless Steel
1-1/2"	3U15DPAL	3U15DPSS
2"	3U20DPAL	3U20DPSS
3"	3U30DPAL	3U30DPSS
4"	3U40DPAL	3U40DPSS



Note: If a dash (-) appears in lieu of a published part number, please inquire regarding current availability.



EVER-TITE® Cam and Groove Couplings

Military Specification Compliance

EVER-TITE® Brass Cam and Groove Couplings are available as compliant with military specifications.

EVER-TITE® Aluminum Cam and Groove Couplings can be ordered as compliant with military specifications by specifying anodized parts identified by military color number per MIL-A-8625.

MIL-C-27487 Military Standard Number - Summary Index												
Coupling Type	Item Code		Class	3/4	1	1-1/4	1-1/2	2	2-1/2	3	4	6
A	MS 27020	Aluminum	1	-3	-5	-7	-9	-11	-13	-15	-17	-19
		Brass	2	-4	-6	-8	-10	-12	-14	-16	-18	-20
B	MS 27026	Aluminum	1	-3	-5	-7	-9	-11	-13	-15	-17	-19
		Brass	2	-4	-6	-8	-10	-12	-14	-16	-18	-20
C	MS 27025	Aluminum	1	-3	-5	-7	-9	-11	-13	-15	-17	-21
		Brass	2	-4	-6	-8	-10	-12	-14	-16	-18	-22
D	MS 27024	Aluminum	1	-3	-5	-7	-9	-11	-13	-15	-17	-19
		Brass	2	-4	-6	-8	-10	-12	-14	-16	-18	-20
E	MS 27021	Aluminum	1	-3	-5	-7	-9	-11	-13	-15	-17	-21
		Brass	2	-4	-6	-8	-10	-12	-14	-16	-18	-22
F	MS 27022	Aluminum	1	-3	-5	-7	-9	-11	-13	-15	-17	-19
		Brass	2	-4	-6	-8	-10	-12	-14	-16	-18	-20
D.C.	MS 27028	Aluminum	1	-3	-5	-7	-9	-11	-13	-15	-17	-19
		Brass	2	-4	-6	-8	-10	-12	-14	-16	-18	-20
D.P.	MS 27029	Aluminum	1	-3	-5	-7	-9	-11	-13	-15	-17	-19
		Brass	2	-4	-6	-8	-10	-12	-14	-16	-18	-20
Gasket	MS 27030			-2	-3	-4	-5	-6	-7	-8	-9	-10

Note: Specify military color number per MIL-A-8625

Special Military Couplings

Many different configurations of adapters and couplers are available. Female wyes with adapters/couplers and double female couplers with shut-off valve #77 are illustrated as representative of the configurations that are available. Please inquire regarding any specific requirement.





EVER-TITE® Cam and Groove Couplings

8000 Dry Disconnect

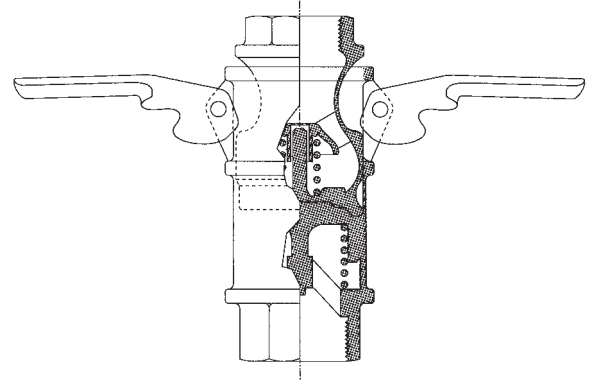
- Prevents fluid spills in most industrial applications
- Eliminates the use of ball valves with standard cam and groove couplings
- Valves automatically close when the coupler and adapter are disconnected
- Close tolerance interface between coupler and adapter
- Handles can be locked to prevent accidental disconnection
- Cannot be connected to standard cam and groove couplings
- Viton® Seals standard, others available



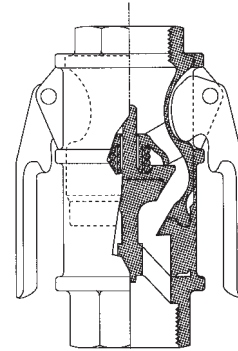
Adapter		
Size	Aluminum	316 Stainless Steel
2"	3208000AAL	3208000ASS
3"	3308000AAL	3308000ASS
4"	3408000AAL	-



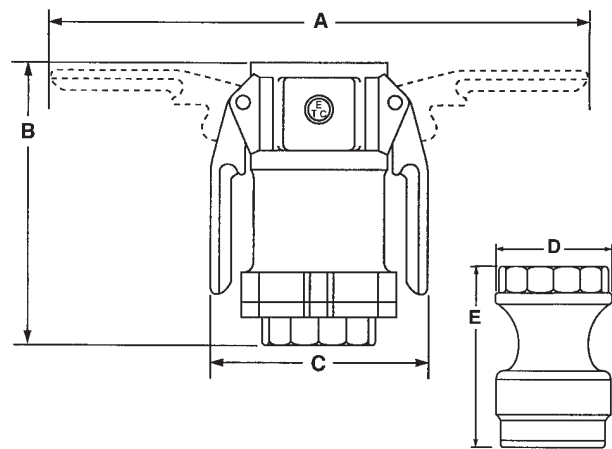
Coupler		
Size	Aluminum	316 Stainless Steel
2"	3208000BAL	3208000BSS
3"	3308000BAL	3308000BSS
4"	3408000BAL	-



Disengaged Position

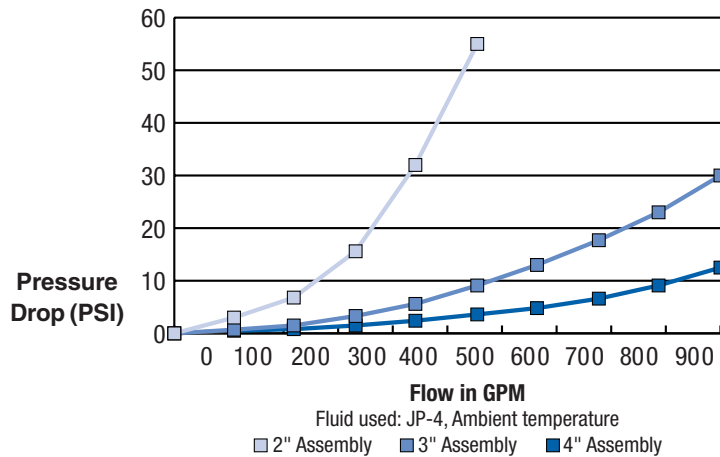


Engaged Position



Typical Dimensions			
Dimension	2"	3"	4"
A	14-5/8"	16-3/8"	24-7/16"
B	6-7/8"	10-1/2"	12-3/4"
C	5-3/8"	9"	9-3/8"
D	3-1/8"	5-3/8"	7"
E	5-5/8"	6-1/2"	11"
Overall Assembly Height	8-3/8"	11"	15"

FLOW RATE CHART



Note: If a dash (-) appears in lieu of a published part number, please inquire regarding current availability.



Cam and Groove Couplings

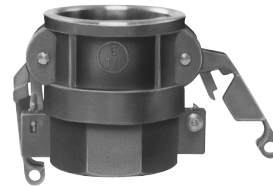
EVER-TITE® Locking Handle Couplers

Model 101

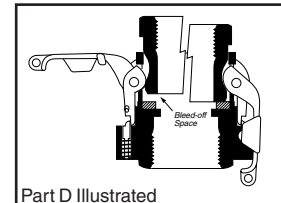
Double-Locking Handle Bleed-Off Couplers

The ONLY bleed-off coupler available

- Extra security – two sets of locking handles
- Releasing one set of handles will bleed off hose pressure
- During bleed-off, handles can be securely reclosed



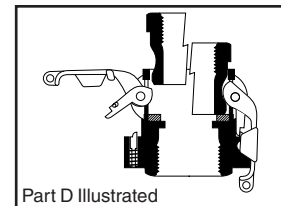
Part D



Part D Illustrated

Lift up the outer set of handles into the bleed-off position while the locked inner handles hold the adapter within the coupling.

Size	Part C			Part D		
	Aluminum	Forged Brass	316 Stainless Steel	Aluminum	Brass	316 Stainless Steel
1"	-	-	310CLHSS101	-	310DLHBR101	310DLHSS101
1-1/2"	315CLHAL101	-	315CLHSS101	315DLHAL101	315DLHBR101	315DLHSS101
2"	320CLHAL101	-	320CLHSS101	320DLHAL101	320DLHBR101	320DLHSS101
2-1/2"	-	-	325CLHSS101	-	325DLHBR101	325DLHSS101
3"	330CLHAL101	-	330CLHSS101	330DLHAL101	330DLHBR101	330DLHSS101
4"	340CLHAL101	-	340CLHSS101	340DLHAL101	340DLHBR101	340DLHSS101



Part D Illustrated

When fully bled-off, pull down on the latch button (not shown) to release the inner set of handles, held by the spring-loaded latch, allowing the coupling to be fully disconnected.

Model 102

Positive-Locking Handle Couplers

The industry standard for locking handle couplers

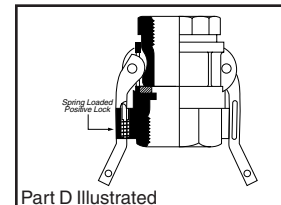
- Most secure locking handle design available
- Requires NO special action to close
- Deliberate release of locking mechanism required to open



Part C



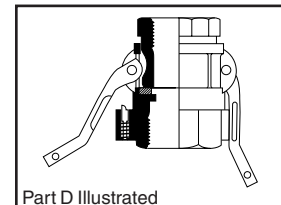
Part D



Part D Illustrated

Coupling and male adapter in the locked position. The handles cannot be inadvertently pulled open.

Size	Part C			Part D		
	Aluminum	Forged Brass	316 Stainless Steel	Aluminum	Brass	316 Stainless Steel
1"	-	-	310CLHSS102	-	310DLHBR102	310DLHSS102
1-1/2"	315CLHAL102	-	315CLHSS102	315DLHAL102	315DLHBR102	315DLHSS102
2"	320CLHAL102	-	320CLHSS102	320DLHAL102	320DLHBR102	320DLHSS102
2-1/2"	-	-	325CLHSS102	-	325DLHBR102	325DLHSS102
3"	330CLHAL102	-	330CLHSS102	330DLHAL102	330DLHBR102	330DLHSS102
4"	340CLHAL102	-	340CLHSS102	340DLHAL102	340DLHBR102	340DLHSS102



Part D Illustrated

To release the lock, pull down on the latch buttons and lift up the handles.



EVER-TITE® Cam and Groove Couplings

Tough-TITE™ Locking Handle Couplers

Part B

Female Coupler x
Male Thread



Part C

Female Coupler x
Hose Shank



Part D

Female Coupler x
Female Thread



Part DC

Dust Cap



316 Stainless Steel				
Size	Part B	Part C	Part D	Part DC
1-1/4"	3E12BLHSS	3E12CLHSS	3E12DLHSS	3E12DCLHSS
1-1/2"	3E15BLHSS	3E15CLHSS	3E15DLHSS	3E15DCLHSS
2"	3E20BLHSS	3E20CLHSS	3E20DLHSS	3E20DCLHSS
2-1/2"	3E25BLHSS	3E25CLHSS	3E25DLHSS	3E25DCLHSS
3"	3E30BLHSS	3E30CLHSS	3E30DLHSS	3E30DCLHSS
4"	3E40BLHSS	3E40CLHSS	3E40DLHSS	3E40DCLHSS
6"	3E60BLHSS	3E60CLHSS	3E60DLHSS	3E60DCLHSS

Safety Clips can be used with locking handle couplers. (Included)

Recommended Maximum Working Pressures for Cam & Groove Couplings

Material	Pressure Rating											
	1/2"	3/4"	1"	1-1/4"	1-1/2"	2"	2-1/2"	3"	4"	5"	6"	8"
Aluminum	250	250	250	250	250	250	150	125	100	75	75	50
Cast Brass	200	200	200	200	200	200	150	125	100	75	75	-
Forged Brass	350	350	350	350	350	350	250	250	100	-	-	-
Heavy Duty Cast Brass	300	300	300	300	300	225	200	200	-	-	-	-
Stainless Steel	250	250	250	250	250	250	200	200	100	75	75	-
Ductile Iron	-	-	-	-	125	125	-	100	100	-	-	-
Nylon	100	100	100	100	100	100	-	100	75	-	-	-
Polypropylene	100	100	100	100	100	100	-	100	75	-	-	-
Monel	250	250	250	250	250	250	200	200	150	75	75	-
Hastalloy C	250	250	250	250	250	250	200	200	150	75	75	-
Carpenter 20	250	250	250	250	250	250	200	200	150	75	75	-



Cam and Groove Couplings

Perma-TITE® Permanently Attached Coupling System

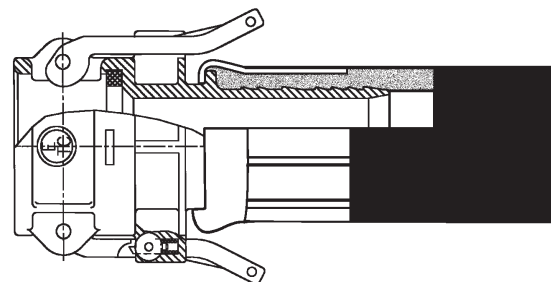
Swaging/Crimping

- Designed to meet the greater retention requirements of XLPE and UHMW chemical transfer hoses.
- Tested to meet or exceed the Rubber Manufacturers Association liquid hose pressure safety requirements of four (4) times the working pressure without leaking.
- Couplers or adapters can be reused by removing them from a damaged hose assembly. **Note:** the reused couplers and adapters must be examined for damage prior to installation in a new hose.



Note: APG coupling products and APG ferrules and crimp sleeves should be used only in combination with one another. Different brands of these type products are not interchangeable in any combination.

316 Stainless Steel				
Size	Notched Ferrule	Crimp Sleeve	Min Hose OD	Max Hose OD
1	310FRLASS	310CRSASS	1-29/64"	1-35/64"
	310FRLBSS	310CRSBSS	1-9/16"	1-11/16"
1-1/2	315FRLASS	315CRSASS	1-15/16"	2-3/16"
	315FRLBSS	315CRSBSS	2-1/16"	2-11/32"
2	320FRLASS	320CRSASS	2-15/32"	2-11/16"
	320FRLBSS	320CRSBSS	2-21/32"	2-27/32"
2-1/2	325FRLASS	325CRSASS	2-31/32"	3-7/32"
	325FRLBSS	325CRSBSS	3-13/64"	3-11/32"
3	330FRLASS	330CRSASS	3-15/32"	3-23/32"
	330FRLBSS	330CRSBSS	3-47/64"	3-27/32"
4	340FRLASS	340CRSASS	4-5/8"	4-47/64"
	340FRLBSS	340CRSBSS	4-3/4"	4-7/8"



Crimped Assembly

APG Parts Compatible with Swaging (Notched Ferrules)						
EVER-TITE®				Tough-TITE®		
316 Stainless Steel				316 Stainless Steel		
Size	Part C Coupler	Part E Adapter	Part C Swivel Coupler	Part C Locking Handle Coupler	Part C Coupler	Part E Adapter
1	310CSS	310ESS		310CLHSS102		
1-1/2	315CSS	315ESS		315CLHSS102	3E15CSS	3E15ESS
2	320CSS	320ESS	320CSSSWVL	320CLHSS102	3E20CSS	3E20ESS
2-1/2	325CSS	325ESS		325CLHSS102		
3	330CSS	330ESS	330CSSSWVL	330CLHSS102	3E30CSS	3E30ESS
4	340CSS	340ESS	340CSSSWVL	340CLHSS102	3E40CSS	3E40ESS



Notched Ferrule



Crimp Sleeve

APG Parts Compatible with Crimping (Crimp Sleeves)											
EVER-TITE®						Tough-TITE®			U-TITE		
316 Stainless Steel				Aluminum		316 Stainless Steel			316 Stainless Steel		
Size	Part C Coupler	Part E Adapter	Part C Swivel Coupler	Part C Locking Handle Coupler	Part C Coupler	Part E Adapter	Part C Coupler	Part E Adapter	Part C Locking Handle Coupler	Part C Coupler	Part E Adapter
1	310CSS	310ESS		310CLHSS102	310CAL	310EAL					
1-1/2	315CSS	315ESS		315CLHSS102	315CAL	315EAL	3E15CSS	3E15ESS	3E15CLHSS	3U15CSS	3U15ESS
2	320CSS	320ESS	320CSSSWVL	320CLHSS102	320CAL	320EAL	3E20CSS	3E20ESS	3E20CLHSS	3U20CSS	3U20ESS
2-1/2	325CSS	325ESS		325CLHSS102	325CAL	325EAL					
3	330CSS	330ESS	330CSSSWVL	330CLHSS102	330CAL	330EAL	3E30CSS	3E30ESS	3E30CLHSS	3U30CSS	3U30ESS
4	340CSS	340ESS	340CSSSWVL	340CLHSS102	340CAL	340EAL	3E40CSS	3E40ESS	3E40CLHSS	3U40CSS	3U40ESS

www.callapg.com

713-675-5271
1-800-888-5223

FAX 713-675-2730
FAX 1-800-444-3252



EVER-TITE® Cam and Groove Couplings

Perma-Tite® Permanently Attached Coupling System

Swivel-Tite®

- The only "live swivel" coupler designed for industrial hose
- Less torque on the hose extends hose life
- Easier connection in limited space environments
- Eliminate operator torque
- Patent Nos. 5,947, 530 and 5,944, 364

Part C Swivel Coupler	
Size	316 Stainless Steel
2"	320CSSSWVL
3"	330CSSSWVL
4"	340CSSSWVL



Clamp-Tite®

- Repair kit provides for field repair of hose assemblies with permanently attached couplings
- Greatly reduces downtime

Size	316 Stainless Steel	Min. Hose OD	Max Hose OD
2"	320CLMPSS	2-15/32"	2-11/16"
3"	330CLMPSS	3-15/32"	3-23/32"
4"	340CLMPSS	4-5/8"	4-47/64"





EVER-TITE® Cam and Groove Couplings

Tank Truck Flange Couplings

Size	Aluminum	
	LAT Adapter	LBT Coupler
2"	320LATAL	320LBTAL
3"	330LATAL	330LBTAL
4"	340LATAL	340LBTAL
6"	360LATAL	*340LBT225AL
		360LBTAL

* 22-1/2° Elbow



LAT Adapter



LBT Coupler

Special Design Heavy Duty Couplings

Not interchangeable with standard cam and groove couplings.
1/2" through 2" sizes include handle rings.



Size	Brass				316 Stainless Steel				Gasket
	Part A	Part D	Dust Cap	Dust Plug	Part A	Part D	Dust Cap	Dust Plug	
1/2"	305AXB	305DXB	305DCXB	-	-	-	-	-	305GSKBUHD
3/4"	307AXB	307DXB	307DCXB	307DPXB	-	-	-	-	307GSKBUHD
1"	310AXB	310DXB	310DCXB	310DPXB	-	-	-	-	310GSKBUHD
1-1/4"	312AXB	312DXB	-	312DPXB	-	-	-	-	312GSKBUHD
1-1/2"	315AXB	315DXB	315DCXB	315DPXB	-	-	-	-	315GSKBUHD
2"	320AXB	320DXB	320DCXB	320DPXB	-	-	-	-	320GSKBUHD
2-1/2"	325AXB	325DXB	325DCXB	325DPXB	-	-	-	-	325GSKBUHD
3"	330AXB	330DXB	330DCXB	-	-	-	-	-	330GSKBUHD
4"	-	-	-	-	-	-	-	-	-



Cam and Groove Couplings

EVER-TITE® Premium Butt Weld and Socket Weld Couplings



Part A
Butt Weld



Part A
Socket Weld



Part D
Butt Weld



Part D
Socket Weld

Size	Part A Adapter						Part D Coupler					
	Butt Weld			Socket Weld			Butt Weld			Socket Weld		
	Brass	Aluminum	316 Stainless Steel	Brass	Aluminum	316 Stainless Steel	Brass	Aluminum	316 Stainless Steel	Brass	Aluminum	316 Stainless Steel
3/4"	-	307ABWAL	307ABWSS	-	307ASWAL	307ASWSS	-	307DBWAL	307DBWSS	-	307DSWAL	307DSWSS
1"	-	310ABWAL	310ABWSS	-	310ASWAL	310ASWSS	-	310DBWAL	310DBWSS	-	310DSWAL	310DSWSS
1-1/2"	-	315ABWAL	315ABWSS	-	315ASWAL	315ASWSS	-	315DBWAL	315DBWSS	-	315DSWAL	315DSWSS
2"	-	320ABWAL	320ABWSS	-	320ASWAL	320ASWSS	-	320DBWAL	320DBWSS	-	320DSWAL	320DSWSS
2-1/2"	-	325ABWAL	325ABWSS	-	325ASWAL	325ASWSS	-	325DBWAL	325DBWSS	-	325DSWAL	325DSWSS
3"	-	330ABWAL	330ABWSS	-	330ASWAL	330ASWSS	-	330DBWAL	330DBWSS	-	330DSWAL	330DSWSS
4"	-	340ABWAL	340ABWSS	-	340ASWAL	340ASWSS	-	340DBWAL	340DBWSS	-	340DSWAL	340DSWSS
5"	-	350ABWAL	350ABWSS	-	350ASWAL	350ASWSS	-	350DBWAL	350DBWSS	-	350DSWAL	350DSWSS
6"	-	360ABWAL	360ABWSS	-	360ASWAL	360ASWSS	-	360DBWAL	360DBWSS	-	360DSWAL	360DSWSS
8"	-	-	-	-	-	-	-	-	-	-	-	-
10"	-	-	-	-	-	-	-	-	-	-	-	-

Note: (1) For Butt Weld, specify tube size or pipe schedule.
(2) For Socket Weld, specify tube or pipe.

Tough-TITE™ Industrial Socket Weld Couplings



Part A
Tube
Socket Weld



Part A
Pipe
Socket Weld



Part D
Tube
Socket Weld



Part D
Pipe
Socket Weld

Size	Part A Adapter				Part D Coupler			
	Tube Socket Weld		Pipe Socket Weld		Tube Socket Weld		Pipe Socket Weld	
	Aluminum	316 Stainless Steel	Aluminum	316 Stainless Steel	Aluminum	316 Stainless Steel	Aluminum	316 Stainless Steel
1-1/2"	3E15ASWALT	3E15ASWSST	3E15ASWALP	3E15ASWSSP	3E15DSWALT	3E15DSWSST	3E15DSWALP	3E15DSWSSP
2"	3E20ASWALT	3E20ASWSST	3E20ASWALP	3E20ASWSSP	3E20DSWALT	3E20DSWSST	3E20DSWALP	3E20DSWSSP
2-1/2"	3E25ASWALT	3E25ASWSST	3E25ASWALP	3E25ASWSSP	3E25DSWALT	3E25DSWSST	-	3E25DSWSSP
3"	3E30ASWALT	3E30ASWSST	3E30ASWALP	3E30ASWSSP	3E30DSWALT	3E30DSWSST	3E30DSWALP	3E30DSWSSP
4"	3E40ASWALT	3E40ASWSST	3E40ASWALP	3E40ASWSSP	3E40DSWALT	3E40DSWSST	3E40DSWALP	3E40DSWSSP
5"	3E50ASWALT	-	3E50ASWALP	-	3E50DSWALT	-	3E50DSWALP	-
6"	3E60ASWALT	3E60ASWSST	3E60ASWALP	3E60ASWSSP	3E60DSWALT	3E60DSWSST	3E60DSWALP	3E60DSWSSP

Note: If a dash (-) appears in lieu of a published part number, please inquire regarding current availability.



EVER-TITE® Cam and Groove Couplings

ASA Flange Couplings (A.N.S.I. Class 150)

- 150 lb flat-face flange and bolt-hole pattern standard (For other patterns, please inquire.)



FLA Adapter
(Class 150)



FLB Coupler
(Class 150)

Note: American Packing and Gasket Company can supply flange gaskets in over 100 different types of gasket material.

Size	FLA Adapters (Class 150)			FLB Couplers (Class 150)		
	Brass	Aluminum	316 Stainless Steel	Brass	Aluminum	316 Stainless Steel
1"	-	-	310FLASS	-	-	310FLBSS
1-1/2"	315FLABR	315FLAAL	315FLASS	315FLBBR	315FLBAL	315FLBSS
2"	320FLABR	320FLAAL	320FLASS	320FLBBR	320FLBAL	320FLBSS
2" x 2-1/2"	-	-	-	-	-	-
2-1/2"	325FLABR	-	-	325FLBBR	325FLBAL	-
2-1/2" X 4"	-	-	-	-	-	-
3"	330FLABR	330FLAAL	330FLASS	330FLBBR	330FLBAL	330FLBSS
4"	340FLABR	340FLAAL	340FLASS	340FLBBR	340FLBAL	340FLBSS
4" x 6"	-	-	-	-	-	-
6"	360FLABR	360FLAAL	-	360FLBBR	360FLBAL	-
8"	-	-	-	-	-	-

90° Coupler with Check Valve

Flow is from coupler end through threaded connection



Size	Brass	Aluminum
1-1/2"	315CV90BR	315CV90AL
2"	320CV90BR	320CV90AL
3"	330CV90BR	330CV90AL

Vapor-Recovery System Parts



Aluminum Only

Size	Part Number	Description
3" x 3"	330VRVAL	3" Male adapter with 3" male pipe thread & poppet valve
4" x 4"	340VRVAL	4" Male adapter with 4" female pipe thread & poppet valve
3" x 3"	330VRCAL	3" Female coupler with 3" hose shank & probe
3" x 2"	33020VRCAL	3" Female coupler with 2" hose shank & probe
4" x 4"	340VRCAL	4" Female coupler with 4" hose shank & probe
4" x 4"	340VRC90AL	4" Female coupler, 90° elbow, with 4" shank & probe
4" x 3"	34030VRCAL	4" Female coupler with 3" hose shank & probe
4" x 3"	34030VRBAL	4" Female coupler with 3" male pipe thread & probe



EVER-TITE® Cam and Groove Couplings

Fill-Pipe Adapter

Brass Only
97A-Adapter Only
97AG-Adapter with Gasket
97AGM-Adapter (2-1/2" high) with Gasket



Adapter Size	Pipe Size	Part Number
3"	2"	3302097ABR
3"	2-1/2"	3302597ABR
3"	3"	33097ABR
3"	3"	33097AGBR
3"	4"	3304097ABR
3"	4"	3304097AGBR
4"	3"	3403097AGMBR
4"	4"	34097ABR
4"	4"	34097AGBR
4"	4"	34097AGMBR
4"	4"	34097AGMCBNL

Note: Most parts available with or without lugs.

Adapter Cap

Brass Only



Size	Part Number	Description
3"	33097CBR	Twist Cap
3"	33097MBR	Locking Cap (Extension Handle)
4"	34097CBR	Twist Cap
4"	34097MCB	Locking Cap (Two Handles)
3"	330HBR97M	Locking Handle Only
4"	340HBR97M	Locking Handle Only

Tough-TITE™ Cam and Groove Couplings

Coupler/Adapter with Relief Nipple



Size: Coupler/Adapter	Size: Relief Nipple	316 Stainless Steel Part Number
3" x 2"	1/2"	3E3020BASSRN05
3" x 2"	3/4"	3E3020BASSRN07
3" x 2"	1"	3E3020BASSRN10

Spool Adapter with Relief Nipple



Size: Spool/Adapter	Size: Relief Nipple	316 Stainless Steel Part Number
3" x 3"	3/4"	3E30SASSRN07



Cam and Groove Couplings

Spool Adapter

* Part SA



Size	EVER-TITE®			Tough-TITE™	
	Aluminum	316 Stainless Steel	Brass	Aluminum	316 Stainless Steel
1 x 1	-	310SASS	-	3E10SAAL	3E10SASS
1-1/4 x 1-1/4	-	312SASS	-	3E12SAAL	3E12SASS
1-1/2 X 1-1/2	315SAAL	315SASS	3E15SABR	3E15SAAL	3E15SASS
1-1/2 x 2	31520SAAL	-	-	3E1520SAAL	3E1520SASS
2 x 2	320SAAL	320SASS	3E20SABR	3E20SAAL	3E20SASS
2 x 2-1/2	-	-	-	3E2025SAAL	-
2 x 3	-	32030SASS	-	3E2030SAAL	3E2030SASS
2 x 4	32040SAAL	-	-	-	-
2-1/2 x 2-1/2	-	-	-	3E25SAAL	-
2-1/2 x 3	32530SAAL	-	-	-	-
3 x 3	330SAAL	330SASS	3E30SABR	3E30SAAL	3E30SASS
3 x 4	33040SAAL	-	-	3E3040SAAL	3E3040SASS
4 x 4	340SAAL	-	-	3E40SAAL	3E40SASS
4 x 5	-	-	-	-	-
4 x 6	-	-	-	3E4060SAAL	-
6 x 6	360SAAL	-	-	3E60SAAL	-

Spool Coupler

* Part BB

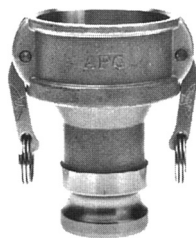


Size	EVER-TITE®		Tough-TITE™	
	Aluminum	316 Stainless Steel	Aluminum	316 Stainless Steel
1-1/2 x 1-1/2	315BBAL	-	3E15BBAL	3E15BBSS
2 x 2	-	320BBSS	3E20BBAL	3E20BBSS
2 x 3	-	-	-	3E2030BBSS
3 x 3	-	330BBSS	3E30BBAL	3E30BBSS
4 x 4	-	-	3E40BBAL	3E40BBSS

Coupler/Adapter

* Part BA

Female Coupler/Male Adapter



*EVER-TITE® Parts Illustrated

Size	EVER-TITE®		Tough-TITE™	
	Aluminum	316 Stainless Steel	Aluminum	316 Stainless Steel
1-1/2 x 2	31520BAAL	-	3E1520BAAL	-
2 x 1-1/2	32015BAAL	32015BASS	3E2015BAAL	3E2015BASS
2 x 3	32030BAAL	-	3E2030BAAL	3E2030BASS
2 x 4	-	-	3E2040BAAL	3E2040BASS
3 x 1-1/2	-	-	3E3015BAAL	3E3015BASS
3 x 2	33020BAAL	33020BASS	3E3020BAAL	3E3020BASS
3 x 2-1/2	-	-	3E3025BAAL	3E3025BASS
3 x 4	33040BAAL	-	3E3040BAAL	3E3040BASS
4 x 2	-	-	3E4020BAAL	3E4020BASS
4 x 3	34030BAAL	34030BASS	3E4030BAAL	3E4030BASS
4 x 6	34060BAAL	-	3E4060BAAL	-
5 x 4	35040BAAL	-	3E5040BAAL	-
6 x 4	36040BAAL	-	3E6040BAAL	3E6040BASS
6 x 5	-	-	3E6050BAAL	-



Cam and Groove Couplings

Increasers/Reducers*

*EVER-TITE® Parts Illustrated



Part A



Part B



Part C



Part D



Part E



Part F

Part	Size Adapter/Thread	EVER-TITE®			Tough-TITE™	
		Aluminum	Brass	316 Stainless Steel	Aluminum	316 Stainless Steel
A	3/4" x 1/2"	-	30705ABR	30705ASS	-	-
	2" x 1-1/2"	32015AAL	32015ABR	-	-	-
	2" x 3"	32030AAL	32030ABR	32030ASS	3E2030AAL	-
	2-1/2" x 3"	32530AAL	-	-	-	-
	3" x 2"	33020AAL	33020ABR	-	3E3020AAL	-
	3" x 2-1/2"	33025AAL	-	-	-	-
	3" x 4"	33040AAL	33040ABR	33040ASS	3E3040AAL	-
B	4" x 3"	34030AAL	34030ABR	-	3E4030AAL	-
	2" x 1-1/2"	32015BAL	-	-	3E2015BAL	-
	3" x 2"	33020BAL	-	-	3E3020BAL	-
	3" x 2-1/2"	-	33025BBR	-	-	-
	3" x 4"	-	-	-	3E3040BAL	-
C	4" x 3"	34030BAL	34030BBR	-	3E4030BAL	-
	1-1/2" x 1"	31510CAL	31510CBR	-	-	-
	2" x 2-1/2"	32025CAL	-	-	-	-
	3" x 2"	33020CAL	33020CBR	-	3E3020CAL	-
	3" x 2-1/2"	33025CAL	33025CBR	-	3E3025CAL	3E3025CSS
	3" x 3-1/2"	33035CAL	-	-	-	-
	3" x 4"	33040CAL	33040CBR	-	3E3040CAL	-
D	4" x 3"	34030CAL	34030CBR	-	3E4030CAL	-
	4" x 3-1/2"	34035CAL	34035CBR	-	-	-
	3/4" x 1/2"	30705DAL	30705DBR	-	-	-
	2" x 1-1/2"	32015DAL	-	-	3E2015DAL	-
	2-1/2" x 2"	32520DAL	-	-	-	-
E	3" x 2"	33020DAL	33020DBR	33020DSS	3E3020DAL	-
	3" x 2-1/2"	33025DAL	-	-	-	-
	4" x 3"	34030DAL	34030DBR	-	3E4030DAL	-
	3" x 2"	33020EAL	-	-	3E3020EAL	-
	3" x 2-1/2"	33025EAL	-	-	3E3025EAL	3E3025ESS
F	3" x 4"	33040EAL	33040EBR	-	-	-
	4" x 3"	34030EAL	34030EBR	-	3E4030EAL	-
	4" x 3-1/2"	34035EAL	-	-	-	-
	1-1/2" x 2"	31520FAL	-	-	-	-
	2" x 1-1/2"	32015FAL	32015FBR	-	3E2015FAL	-
	3" x 1-1/5"	33015FAL	-	-	3E3015FAL	-
	3" x 2"	33020FAL	33020FBR	-	3E3020FAL	-
F	3" x 2-1/2"	33025FAL	-	-	-	-
	3" x 4"	33040FAL	-	-	3E3040FAL	-
	4" x 3"	34030FAL	34030FBR	-	3E4030FAL	-
	4" x 3"	34030FAL	34030FBR	-	3E4030FAL	-
	6" x 5"	36050FAL	-	-	-	-

[^] The standard EVER-TITE® 2" x 1-1/2" Aluminum Part B is pictured. A MIL-Spec version is available with a longer shank containing the thread component and a hex nut.

Note: If a dash (-) appears in lieu of a published part number, please inquire regarding current availability.



EVER-TITE® Cam and Groove Couplings

90° Part A

Male Adapter x Female Thread



Size	Brass	Aluminum
1-1/2"	-	315A90AL
2"	320A90BR	320A90AL
3"	330A90BR	330A90AL
4"	-	340A90AL

90° Part C

Female Coupler x Hose Shank



Size	Brass	Aluminum	316 Stainless Steel
1-1/4"	312C90BR	-	-
1-1/2"	315C90BR	315C90AL	-
2"	320C90BR	320C90AL	-
3"	-	330C90AL	330C90SS
4"	340C90BR	340C90AL	-

90° Part D

Female Coupler x Female Thread



Size	Brass	Aluminum	316 Stainless Steel
1-1/4"	312D90BR	-	-
1-1/2"	315D90BR	315D90AL	315D90SS
2"	320D90BR	320D90AL	320D90SS
2-1/2"	325D90BR	325D90AL	-
3"	330D90BR	330D90AL	330D90SS
4"	-	340D90AL	340D90SS
6"	-	360D90AL	-

90° Spool Coupler

Part BB



Size	Aluminum
3"	330BB90AL
4"	340BB90AL
6"	360BB90AL

90° Coupler/Adapter

Part BA
Female Coupler x Male Adapter



Size	Brass	Aluminum
4"	340BA90BR	340BA90AL
6"	-	360BA90AL



EVER-TITE® Cam and Groove Couplings

No. 99 Tight-Fill Couplings



Aluminum Body, Bronze Parts

Part Number	Description
33099SGALNIE	3" x 100' x 8-1/2" Clearance sight gauge - no inlet end
33099SGALAIE	3" x 100' x 8-1/2" Clearance sight gauge - 3" adapter inlet end
33099SGALCIE	3" x 100' x 8-1/2" Clearance sight gauge - 3" coupler inlet end
33099SGAL40AIE	3" x 100' x 8-1/2" Clearance sight gauge - 4" adapter inlet end
33099SGAL40CIE	3" x 100' x 8-1/2" Clearance sight gauge - 4" coupler inlet end
33099SGALMT*	3" x 100' x 8-1/2" Clearance sight gauge - male threaded inlet end
33099SGALFT*	3" x 100' x 8-1/2" Clearance sight gauge - female threaded inlet end
33099SAL	3" Straight (no sight gauge) male threaded inlet only
34099SGALNIE	4" x 100' x 12-1/2" Clearance sight gauge - no inlet end
34099SGALAIE*	4" x 100' x 12-1/2" Clearance sight gauge - 4" adapter inlet end
34099SGALCIE*	4" x 100' x 12-1/2" Clearance sight gauge - 4" coupler inlet end
34099SGAL30AIE*	4" x 100' x 12-1/2" Clearance sight gauge - 3" adapter inlet end
34099SGAL30CIE*	4" x 100' x 12-1/2" Clearance sight gauge - 3" coupler inlet end
34099SGALMTIE*	4" x 100' x 12-1/2" Clearance sight gauge - male threaded inlet end
34099SGALFTIE*	4" x 100' x 12-1/2" Clearance sight gauge - female threaded inlet end
34099SAL	4" Straight (no sight gauge) male threaded inlet only

* Stirrup handle available assembled on 4" SG's only

Parts for No. 99 Elbow Couplings

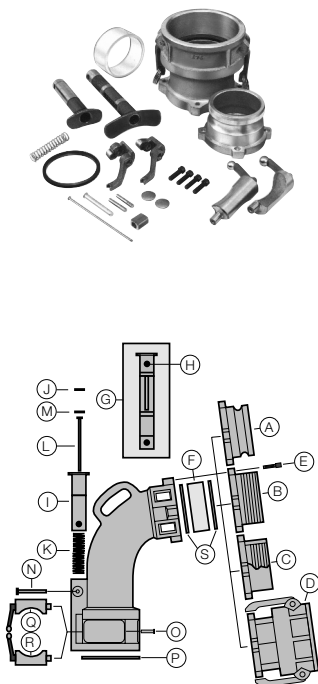


Diagram Reference	Part Number		Description
	3"	4"	
A	330AIEAL99	340AIEAL99	Adapter inlet end only
A	340AIEAL3099	-	4" Adapter inlet end for 3" No. 99
A	-	330AIEAL4099	3" Adapter inlet end for 4" No. 99
B	330MIEAL99	340MTIEAL99	Male threaded adapter inlet end only
C	330FIEAL99	340FTIEAL99	Female threaded adapter inlet end only
D	330CIEAL99	340CIEAL99	Coupler inlet ends only
D	340CIEAL3099	-	4" Coupler inlet end for 3" No. 99
D	-	330CIEAL4099	3" Coupler inlet end for 4" No. 99
E	330SCRXX99	340SCRXX4099	Screws for inlet end (set of four)
F	330PSXX99	340PSXX4099	Plexiglas™ shell only
G	-	340HBR99PLT	Plunger (T-handle)
H	-	340SPBR99	Spacer
I	330PLBR99	-	Plunger
J	330CAPBR99	340CAPBR99	Cap
K	330SPRXX99	340SPRXX99	Spring
L	330RODXX99	-	Rod
M	330DISCBR99	-	Disc
N	-	330PSSGS316	Grooved Pin
O	330PSSHL	-	Headed Pin
P	330GSKBUMS	340GSKBUMS	Coupler gasket
Q	330HBRLF99	340HBRLF99	Left Handle
R	330HBRRT99	340HBRRT99	Right Handle
S	330GSKBUSG99	340GSKBU97AGM	Buna Basket
T	-	-	T-handle assembly available
U	-	340HBR99PLSL	Stirrup handle assembly available



Cam and Groove Couplings

Accessories

Handle Assembly



EVER-TITE®



Tough-TITE™



U-TITE

Handle, Ring, and Pin

Size	EVER-TITE®		Tough-TITE™		U-TITE	
	Brass	316 Stainless Steel	Brass	316 Stainless Steel	Brass	316 Stainless Steel
1/2", 3/4"	307HRPBR	307HRPSS	3E07HRPBR	3E07HRPSS	-	-
1"	310HRPBR	310HRPSS	3E10HRPBR	3E10HRPSS	-	-
1-1/4" - 2-1/2"	315HRPBR	315HRPSS	3E15HRPBR	3E15HRPSS	3U15HRPBR	3U15HRPSS
3", 4", 5"	330HRPBR	330HRPSS	3E30HRPBR	3E30HRPSS	3U30HRPBR	3U30HRPSS
6"	360HRPBR	360HRPSS	3E60HRPBR	3E60HRPSS	-	-
8"	380HRPBR	380HRPSS	*	*	-	-

* 8" Tough-Tite™ Couplers Employ 6" Handles

Stainless Steel Pin



Size	Part No.
3/4-1"	-
1-1/4-2-1/2"	3WP200
3-5"	3WP300
6"	3WP600
8"	3WP800

Finger Ring



2-Turn

3-Turn

Size	Steel Plated	Stainless Steel
3/4"-2-1/2"	3SRXXO	3SRSSO
3"-8"	3LRXXO	3LRSSO

Locking Clip



Size	Part No.
3/4-1"	3WLC
1-1/4-2-1/2"	3WLC
3-5"	3WLC
6-8"	3WLC6

Chain with "S" Hooks



Size	Brass	316 Stainless Steel
6"	360CHBR	360CHSS
12"	3120CHBR	3120CHSS

Overlocking Handles for Dust Caps



EVER-TITE®

Tough-TITE™

Size	EVER-TITE®		Tough-TITE™
	Brass	316 Stainless Steel	316 Stainless Steel
1-1/4", 1-1/2", 2"	-	-	3THOL250
2-1/2"	320HBRL	-	3THOL250
3"	330HBRL	-	3THOL250
4"	340HBRL	-	3THOL400
6"	-	360HSSL	3THOL400
			3THOL600



Cam and Groove Couplings

Accessories

Replacement Gaskets



Gasket Material	Color Code Marking on Gasket
Buna-N	Blue stripe on O.D.
Buna-N (Mil/Spec)	Blue stripe/white stripe on O.D.
Neoprene	Red stripe on O.D.
EPDM	Double white stripe on O.D.
Gum	No marking
Butyl	White Stripe on O.D.
Fluoroelastomer	Yellow Stripe on O.D.
Silicon	Red Gasket
DuPont Viton®	White Lettering "ETC Viton"

Size	Buna Lathe Cut (Mil/Spec)	Buna Lathe Cut Extra Thick	Gum Lathe Cut	EPDM Lathe Cut	Butyl Lathe Cut
1/2"	*305GSKBU	-	-	305GSKEP	305GSKBT
3/4"	307GSKBUMS	-	-	307GSKEP	307GSKBT
1"	310GSKBUMS	310GSKBUX	310GSKGM	310GSKEP	310GSKBT
1-1/4"	312GSKBUMS	312GSKBUX	-	312GSKEP	312GSKBT
1-1/2"	315GSKBUMS	315GSKBUX	315GSKGM	315GSKEP	315GSKBT
2"	320GSKBUMS	320GSKBUX	320GSKGM	320GSKEP	320GSKBT
2-1/2"	325GSKBUMS	325GSKBUX	-	325GSKEP	325GSKBT
3"	330GSKBUMS	330GSKBUX	330GSKGM	330GSKEP	330GSKBT
4"	340GSKBUMS	340GSKBUX	340GSKGM	340GSKEP	340GSKBT
5"	*350GSKBU	-	350GSKGM	350GSKEP	350GSKBT
6"	360GSKBUMS	360GSKBUX	360GSKGM	360GSKEP	360GSKBT
8"	*380GSKBU	-	-	-	-

Size	Neoprene Lathe Cut Black	Neoprene Lathe Cut White	Fluoroelastomer Lathe Cut	DuPont Viton® Lathe Cut	Silicon Lathe Cut	PTFE/Buna	PTFE/Fluoroelastomer
1/2"	305GSKNB	305GSKNW	305GSKVA	-	305GSKSI	305GSKTB	305GSKTV
3/4"	307GSKNB	307GSKNW	307GSKVA	-	307GSKSI	307GSKTB	307GSKTV
1"	310GSKNB	310GSKNW	310GSKVA	-	310GSKSI	310GSKTB	310GSKTV
1-1/4"	312GSKNB	312GSKNW	312GSKVA	-	312GSKSI	312GSKTB	312GSKTV
1-1/2"	315GSKNB	315GSKNW	315GSKVA	315GSKVITON	315GSKSI	315GSKTB	315GSKTV
2"	320GSKNB	320GSKNW	320GSKVA	320GSKVITON	320GSKSI	320GSKTB	320GSKTV
2-1/2"	325GSKNB	325GSKNW	325GSKVA	-	325GSKSI	325GSKTB	325GSKTV
3"	330GSKNB	330GSKNW	330GSKVA	330GSKVITON	330GSKSI	330GSKTB	330GSKTV
4"	340GSKNB	340GSKNW	340GSKVA	340GSKVITON	340GSKSI	340GSKTB	340GSKTV
5"	350GSKNB	350GSKNW	350GSKVA	-	350GSKSI	350GSKTB	350GSKTV
6"	360GSKNB	360GSKNW	360GSKVA	-	360GSKSI	360GSKTB	360GSKTV
8"	-	-	-	-	-	-	-

* No Mil/Spec for 1/2", 5", and 8"

Safety Cables

Hose End to Hose End



Cable	Hose I.D.	Length	Part Number
1/8"	1/2"-1-1/4"	20"	3TWHH1
1/4"	1-1/2"-3"	38"	3TWHH2

Hose End to Tool End



Cable	Hose I.D.	Length	Part Number
1/8"	1/2"-1-1/4"	20"	3TWHT1
1/4"	1-1/2"-3"	38"	3TWHT2

Note: If a dash (-) appears in lieu of a published part number, please inquire regarding current availability.