



**PIRANHA**®

**HOSE PRODUCTS, INC.**

A Kuriyama Group Company

*"The Only Name in Sewer Cleaning"*

**GOODYEAR**  
GOODYEARBELTING.COM

Call Toll Free: 1-866-711-4673  
International: +1-727-342-5086

**We Ship  
World Wide**

# Index



**Page 3**

**Applications, Temperature, Construction, Features & Advantages and Lengths**

**Page 4**

**High Pressure Sewer Cleaning Hoses**  
2,500 PSI Series SPOR  
3,000 PSI Series LLBU & HPBU

**Page 5**

**Slither™ High Pressure Sewer Cleaning Hoses**  
2,500 PSI Series SLSPOR  
3,000 PSI Series SLSPOR

**Page 6**

**Jetting/Lateral Line Hoses**  
4,000 PSI Series LLGR  
4,000 PSI Series High Burst SHBK, LHBK  
5,000 PSI Series LLRD

**Page 7**

**Slither™ Jetting/Lateral Line Hoses**  
4,000 PSI Series SLGR  
4,000 PSI High Burst Series SLSHBK, SLLHBK  
5,000 PSI Series SLRD

**Page 8**

**Armor Belt® Applications, Temperature, Construction,  
Features & Advantages and Lengths**

**Page 9**

**Armor Belt® Sewer Cleaning Hoses**  
2,500 PSI Series SAOR  
3,000 PSI Series HABU  
4,000 PSI Series LAGR

**Page 10**

**Piranha "Ready-To-Go" Stock Length Hose Assemblies**

**Page 11**

**Standard & Custom Assembly / Ordering Instructions**

**Page 12**

**Fittings and Accessories for Piranha Hoses**

**Page 13**

**Fittings and Accessories for Piranha Hoses & Swaging Equipment**

**Page 14**

**Crimping Equipment**

**Page 15**

**Cautionary Statement and Limited Warranty**

**Back**

**Find Piranha Hose Sewer Cleaning Products in your area**

THE TRADEMARKS CONTAINED IN THIS PUBLICATION ARE TRADEMARKS OF KURIYAMA OF AMERICA, INC.

**GOODYEAR**  
GOODYEARBELTING.COM

**Call Toll Free: 1-866-711-4673**  
**International: +1-727-342-5086**

**We Ship  
World Wide**



# Sewer & Jetting/Lateral Line Hoses

## Applications, Temperature, Construction, Features & Advantages and Lengths

### Applications:

- **High Pressure Sewer Cleaning** - Applications for commercial, industrial and residential.
- **Tight Pipe Bends** - Slick, Slither™ cover affords an easier handling hose to get the job done.
- **Jetting/Lateral Line** - Used for jetting equipment.

### Temperature:

- **Hose Temperature Range** - For the diameters of 1/2", 3/4", 1" and 1 1/4" is -40°F (-40°C) to +150°F (+66°C).
- **Hose Temperature Range** - For the diameters of 1/8", 3/16", 1/4" and 3/8" is -40°F (-40°C) to +160°F (+71°C).

### Construction:

- **Inner Tube** - Yellow Polyolefin. (Sewer Cleaning Hoses, 2,500 & 3,000 PSI) Yellow seamless thermoplastic. (Jetting/Lateral Line Hoses, 4,000 & 5,000 PSI)
- **Reinforcement** - High tensile one or two synthetic fiber braids.
- **Cover** - Abrasion resistant polyether-urethane. (Standard)
- **Slither™** - Polyether-urethane low coefficient of friction. (Optional)

### Features & Advantages:

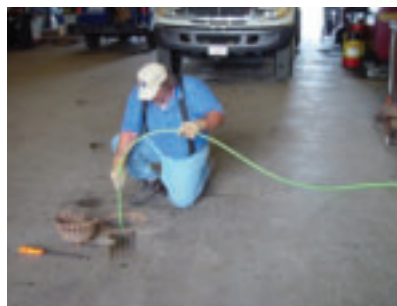
- **Materials** - Constructed to provide rugged and reliable service under the most severe and demanding conditions.
- **Yellow Color Tube** - Assures the user that they are using a WASTECC designated Piranha Hose Product.
- **Polyolefin or Seamless Thermoplastic Tube** - Provides maximum resistance to hydrolysis.
- **High Tensile One or Two Synthetic Fiber Braids** - Contributes to low volumetric expansion and eliminates loss of strength from moisture absorption.
- **Abrasion Resistant Polyether-Urethane** - Polyurethane cover provides exceptional cut, abrasion and fungus resistance.
- **Slither™ Cover** - Cover is ultra slippery; allows hose to maneuver around and through difficult sewer bends.
- **Pressure Testing** - All Piranha factory-assembled hoses are 100% pressure tested.
- **Reel Installation** - Ideal for truck and trailer mounts.

### Industry Standards:

- **Orange Cover** = 2,500 PSI
- **Blue Cover** = 3,000 PSI
- **Green Cover** = 4,000 PSI
- **Black Cover** = 4,000 PSI (High Burst)
- **Red Cover** = 5,000 PSI

### Lengths:

- **Stock Lengths** - 400, 500, and 600 foot rolls.
- **Custom Lengths** - Available and made to order.
- **Jetting/Lateral Lines** - Available for bulk and/or assemblies.



**GOODYEAR**  
GOODYEARBELTING.COM

Call Toll Free: 1-866-711-4673  
International: +1-727-342-5086

**We Ship  
World Wide**



# Sewer Cleaning Hose



**2,500 PSI**  
Series - SPOR



**A** yellow polyolefin tube, single high tensile synthetic fiber braid reinforcement and abrasion resistant orange polyether-urethane cover.

## NOMINAL SPECIFICATIONS

SERIES NUMBER	NOMINAL I.D.		NOMINAL O.D.		MAX. OPERATING PRESSURE		MIN. BURST PRESSURE		MIN. BEND RADIUS		Weight LBS/FT
	INCHES	MM	INCHES	MM	PSI	BAR	PSI	BAR	INCHES	MM	
SPOR-10	5/8	16.0	0.96	24.4	2,500	172.4	6,250	430.9	4.00	101.6	0.19
SPOR-12	3/4	19.1	1.18	30.0	2,500	172.4	6,250	430.9	5.00	127.0	0.28
SPOR-16	1	25.4	1.46	37.1	2,500	172.4	6,250	430.9	6.00	152.4	0.40
SPOR-20	1-1/4	32.0	1.80	45.7	2,500	172.4	6,250	430.9	8.00	203.2	0.59

MADE IN USA



**3,000 PSI**  
Series - LLBU, HPBU



**A** yellow polyolefin tube, double high tensile synthetic fiber braid reinforcement and abrasion resistant blue polyether-urethane cover.

## NOMINAL SPECIFICATIONS

SERIES NUMBER	NOMINAL I.D.		NOMINAL O.D.		MAX. OPERATING PRESSURE		MIN. BURST PRESSURE		MIN. BEND RADIUS		Weight LBS/FT
	INCHES	MM	INCHES	MM	PSI	BAR	PSI	BAR	INCHES	MM	
LLBU-08	1/2	12.8	0.83	21.2	3,000	206.8	7,500	517.1	4.00	101.6	0.16
HPBU-12	3/4	19.1	1.18	30.0	3,000	206.8	7,500	517.1	5.00	127.0	0.29
HPBU-16	1	25.4	1.48	37.6	3,000	206.8	7,500	517.1	8.00	203.2	0.41

MADE IN USA



**GOODYEAR**  
GOODYEARBELTING.COM

Call Toll Free: 1-866-711-4673  
International: +1-727-342-5086

**We Ship  
World Wide**



# Slither™ Sewer Cleaning Hose



## SLITHER™ 2,500 PSI Series - SLSPOR



**A** yellow polyolefin tube, single high tensile synthetic fiber braid reinforcement and abrasion resistant **slick** orange polyether-urethane cover.

### NOMINAL SPECIFICATIONS

SERIES NUMBER	NOMINAL I.D.		NOMINAL O.D.		MAX. OPERATING PRESSURE		MIN. BURST PRESSURE		MIN. BEND RADIUS		Weight LBS/FT
	INCHES	MM	INCHES	MM	PSI	BAR	PSI	BAR	INCHES	MM	
SLSPOR-10	5/8	16.0	0.96	24.4	2,500	172.4	6,250	430.9	4.00	101.6	0.19
SLSPOR-12	3/4	19.1	1.18	30.0	2,500	172.4	6,250	430.9	5.00	127.0	0.28
SLSPOR-16	1	25.4	1.46	37.1	2,500	172.4	6,250	430.9	6.00	152.4	0.40
SLSPOR-20	1-1/4	32.0	1.80	45.7	2,500	172.4	6,250	430.9	8.00	203.2	0.59

MADE IN USA



## SLITHER™ 3,000 PSI Series - SLBU, SLHPBU

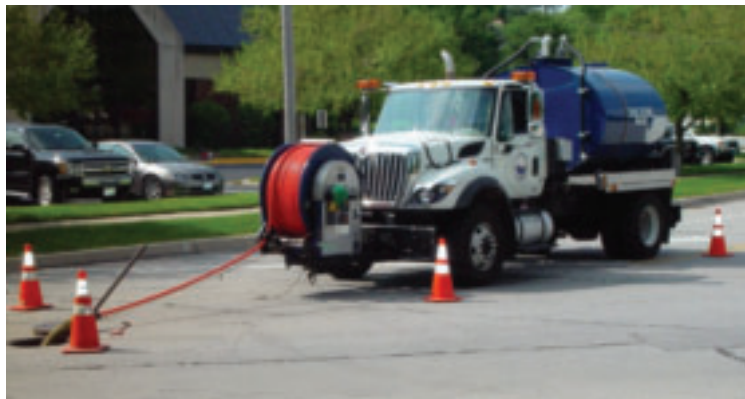


**A** yellow polyolefin tube, double high tensile synthetic fiber braid reinforcement and abrasion resistant **slick** blue polyether-urethane cover.

### NOMINAL SPECIFICATIONS

SERIES NUMBER	NOMINAL I.D.		NOMINAL O.D.		MAX. OPERATING PRESSURE		MIN. BURST PRESSURE		MIN. BEND RADIUS		Weight LBS/FT
	INCHES	MM	INCHES	MM	PSI	BAR	PSI	BAR	INCHES	MM	
SLBU-08	1/2	12.8	0.83	21.2	3,000	206.8	7,500	517.1	4.00	101.6	0.16
SLHPBU-12	3/4	19.1	1.18	30.0	3,000	206.8	7,500	517.1	5.00	127.0	0.29
SLHPBU-16	1	25.4	1.48	37.6	3,000	206.8	7,500	517.1	8.00	203.2	0.41

MADE IN USA



**GOODYEAR**  
GOODYEARBELTING.COM

Call Toll Free: 1-866-711-4673  
International: +1-727-342-5086

**We Ship  
World Wide**



# Jetting/Lateral Line Hose



## 4,000 PSI Series - LLGR



**A** yellow seamless thermoplastic tube, double high tensile synthetic fiber braid reinforcement and abrasion resistant green polyether-urethane cover.

### NOMINAL SPECIFICATIONS

SERIES NUMBER	NOMINAL I.D.		NOMINAL O.D.		MAX. OPERATING PRESSURE		MIN. BURST PRESSURE		MIN. BEND RADIUS		Weight LBS/FT
	INCHES	MM	INCHES	MM	PSI	BAR	PSI	BAR	INCHES	MM	
LLGR-02	1/8	3.6	0.32	8.2	4,000	275.8	10,000	689.5	1.25	31.2	0.04
LLGR-03	3/16	4.8	0.41	10.5	4,000	275.8	10,000	689.5	1.75	44.5	0.05
LLGR-04	1/4	6.4	0.50	12.6	4,000	275.8	10,000	689.5	2.50	63.5	0.06
LLGR-06	3/8	9.7	0.65	16.5	4,000	275.8	10,000	689.5	3.00	76.2	0.11
LLGR-08	1/2	12.8	0.83	21.2	4,000	275.8	10,000	689.5	4.00	101.6	0.16

MADE IN USA



## HIGH BURST 4,000 PSI Series - SHBK, LHBK



**A** yellow seamless thermoplastic tube, double high tensile synthetic fiber braid reinforcement and abrasion resistant black polyether-urethane cover.

### NOMINAL SPECIFICATIONS

SERIES NUMBER	NOMINAL I.D.		NOMINAL O.D.		MAX. OPERATING PRESSURE		MIN. BURST PRESSURE		MIN. BEND RADIUS		Weight LBS/FT
	INCHES	MM	INCHES	MM	PSI	BAR	PSI	BAR	INCHES	MM	
SHBK-08	1/2	12.7	0.87	22.1	4,000	275.8	12,000	827.4	3.00	76.2	0.20
SHBK-10	5/8	15.9	0.91	23.0	4,000	275.8	12,000	827.4	4.00	101.6	0.16
LHBK-08	1/2	12.7	0.80	20.3	4,000	275.8	16,000	1103.2	4.00	101.6	0.15

Note: Series LHBK-08 and SHBK-10 have a single high tensile synthetic fiber braid.

MADE IN USA



## 5,000 PSI Series - LLRD



**A** yellow seamless thermoplastic tube, double high tensile synthetic fiber braid reinforcement and abrasion resistant red polyether-urethane cover.

### NOMINAL SPECIFICATIONS

SERIES NUMBER	NOMINAL I.D.		NOMINAL O.D.		MAX. OPERATING PRESSURE		MIN. BURST PRESSURE		MIN. BEND RADIUS		Weight LBS/FT
	INCHES	MM	INCHES	MM	PSI	BAR	PSI	BAR	INCHES	MM	
LLRD-04	1/4	6.4	0.50	12.6	5,000	344.7	12,500	861.8	2.50	63.5	0.05
LLRD-06	3/8	9.7	0.65	16.5	5,000	344.7	12,500	861.8	3.00	76.2	0.13
LLRD-08	1/2	12.8	0.80	20.2	5,000	344.7	12,500	861.8	4.00	101.6	0.13

Note: Series LLRD-08 has a single high tensile synthetic fiber braid.

MADE IN USA

**GOODYEAR**  
GOODYEARBELTING.COM

Call Toll Free: 1-866-711-4673  
International: +1-727-342-5086

**We Ship  
World Wide**



# Slither™ Jetting/Lateral Line Hose



**SLITHER™**

**4,000 PSI Series - SLGR**



**A** yellow seamless thermoplastic tube, double high tensile synthetic fiber braid reinforcement and abrasion resistant **slick** green polyether-urethane cover.

## NOMINAL SPECIFICATIONS

SERIES NUMBER	NOMINAL I.D.		NOMINAL O.D.		MAX. OPERATING PRESSURE		MIN. BURST PRESSURE		MIN. BEND RADIUS		Weight LBS/FT
	INCHES	MM	INCHES	MM	PSI	BAR	PSI	BAR	INCHES	MM	
SLGR-02	1/8	3.6	0.32	8.2	4,000	275.8	10,000	689.5	1.25	31.2	0.04
SLGR-03	3/16	4.8	0.41	10.5	4,000	275.8	10,000	689.5	1.75	44.5	0.05
SLGR-04	1/4	6.4	0.50	12.6	4,000	275.8	10,000	689.5	2.50	63.5	0.06
SLGR-06	3/8	9.7	0.65	16.5	4,000	275.8	10,000	689.5	3.00	76.2	0.11
SLGR-08	1/2	12.8	0.83	21.2	4,000	275.8	10,000	689.5	4.00	101.6	0.16

MADE IN USA



**SLITHER™**  
**HIGH BURST**

**4,000 PSI Series - SLSHBK, SLLHBK**



**A** yellow seamless thermoplastic tube, double high tensile synthetic fiber braid reinforcement and abrasion resistant **slick** black polyether-urethane cover.

## NOMINAL SPECIFICATIONS

SERIES NUMBER	NOMINAL I.D.		NOMINAL O.D.		MAX. OPERATING PRESSURE		MIN. BURST PRESSURE		MIN. BEND RADIUS		Weight LBS/FT
	INCHES	MM	INCHES	MM	PSI	BAR	PSI	BAR	INCHES	MM	
SLSHBK-08	1/2	12.7	0.87	22.1	4,000	275.8	12,000	827.4	3.00	76.2	0.20
SLSHBK-10	5/8	15.9	0.91	23.0	4,000	275.8	12,000	827.4	4.00	101.6	0.16
SLLHBK-08	1/2	12.7	0.80	20.3	4,000	275.8	16,000	1,103.2	4.00	101.6	0.15

Note: Series SLLSHBK-08 and SLSHBK-10 have a single high tensile synthetic fiber braid.

MADE IN USA



**SLITHER™**

**5,000 PSI Series - SLRD**



**A** yellow seamless thermoplastic tube, double high tensile synthetic fiber braid reinforcement and abrasion resistant **slick** red polyether-urethane cover.

## NOMINAL SPECIFICATIONS

SERIES NUMBER	NOMINAL I.D.		NOMINAL O.D.		MAX. OPERATING PRESSURE		MIN. BURST PRESSURE		MIN. BEND RADIUS		Weight LBS/FT
	INCHES	MM	INCHES	MM	PSI	BAR	PSI	BAR	INCHES	MM	
SLRD-04	1/4	6.4	0.50	12.6	5,000	344.7	12,500	861.8	2.50	63.5	0.05
SLRD-06	3/8	9.7	0.65	16.5	5,000	344.7	12,500	861.8	3.00	76.2	0.13
SLRD-08	1/2	12.8	0.80	20.2	5,000	344.7	12,500	861.8	4.00	101.6	0.13

Note: Series SLRD-08 has a single high tensile synthetic fiber braid.

MADE IN USA

**GOODYEAR**  
GOODYEARBELTING.COM

Call Toll Free: 1-866-711-4673  
International: +1-727-342-5086

**We Ship  
World Wide**



# Armor Belt® Hose

## Applications, Temperature, Construction, Features & Advantages and Lengths

**Armor Belt®** Sewer Cleaning Hose by Piranha® Hose Products, Inc. features an innovative process that adds value to your sewer hose purchase by adding life to the hose. Armor Belt® hose is a must when the application calls for extreme durability while maintaining flexibility. It also improves cut and abrasion resistance. It's the ideal hose for the demanding and harsh environment of sewer cleaning.

### Applications:

- **Harsh Environments** - Demanding sewer cleaning environments requiring additional abrasion resistance.
- **High Pressure/Abrasion** - High pressure sewer cleaning applications.

### Temperature:

Armor Belt® Service Temperature Range: -40°F (-40°C) to +150°F (+66°C)

### Construction:

- **Inner Tube Material** - Yellow polyolefin.
- **Reinforcement** - High tensile one or two synthetic fiber braids.
- **Polymer Belting** - Protects reinforcement.
- **Cover Material** - Abrasion resistant polyether-urethane, perforated bonded construction - materials are chemically bonded together.
- **Slither™ Cover Version** - Polyether-urethane low coefficient of friction. (Optional)

### Features & Advantages:

- **Patented Armor Belt Construction** - Increases hose abrasion and cut resistance for longer service life. Greatly increased crush resistance. Provides rugged and reliable service.
- **Polyolefin Tube** - Provides maximum resistance to hydrolysis.
- **High Tensile Synthetic Fiber Reinforcement** - Contributes to low volumetric expansion and eliminates loss of strength from moisture absorption.
- **Polyether-Urethane Cover** - Provides fungus resistance.
- **Unique Construction** - All hose components are chemically bonded to maximize hose service life.
- **Optional Slither™ Ultra Slick Cover** - Design is also available; check with factory for details.
- **Factory Assemblies** - All Piranha factory-assembled hoses are 100% pressure tested.
- **Reel Installation** - Ideal for truck and trailer mounted reels.

### Industry Standards:

- **Orange Cover = 2,500 PSI**
- **Blue Cover = 3,000 PSI**
- **Green Cover = 4,000 PSI**

### Lengths:

- **Standard Lengths** - 400, 500, and 600 foot rolls.
- **Custom Lengths** - Available and made to order.



**GOODYEAR**  
GOODYEARBELTING.COM

Call Toll Free: 1-866-711-4673  
International: +1-727-342-5086

**We Ship  
World Wide**





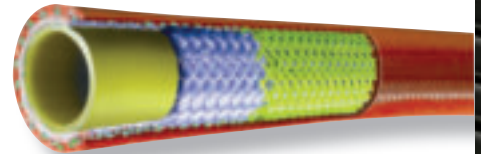
# Armor Belt®

**The Toughest Hose in the Market**

- Lightweight • Extremely durable against normal wear and tear • Highly abrasive resistant
- Excellent cut resistance • Greatly increased crush resistance • Designed to be tougher and last longer



## 2,500 PSI Series - SAOR



**A** yellow polyolefin tube, single high tensile synthetic fiber braid reinforcement, rugged polymer belting and abrasion resistant orange polyether-urethane cover.

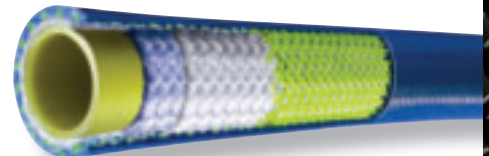
### NOMINAL SPECIFICATIONS

SERIES NUMBER	NOMINAL I.D.		NOMINAL O.D.		MAX. OPERATING PRESSURE		MIN. BURST PRESSURE		MIN. BEND RADIUS		Weight LBS/FT
	INCHES	MM	INCHES	MM	PSI	BAR	PSI	BAR	INCHES	MM	
SAOR-10	5/8	15.9	1.10	27.9	2,500	172.4	6,250	430.9	4.00	101.6	0.31
SAOR-12	3/4	19.1	1.31	33.3	2,500	172.4	6,250	430.9	5.00	127.0	0.36
SAOR-16	1	25.4	1.55	39.4	2,500	172.4	6,250	430.9	6.00	152.4	0.50
SAOR-20	1-1/4	31.8	1.87	47.5	2,500	172.4	6,250	430.9	7.00	177.8	0.66

MADE IN USA



## 3,000 PSI Series - HABU



**A** yellow polyolefin tube, double high tensile fiber braid reinforcement, rugged polymer belting and abrasion resistant blue polyether-urethane cover.

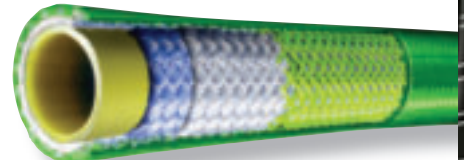
### NOMINAL SPECIFICATIONS

SERIES NUMBER	NOMINAL I.D.		NOMINAL O.D.		MAX. OPERATING PRESSURE		MIN. BURST PRESSURE		MIN. BEND RADIUS		Weight LBS/FT
	INCHES	MM	INCHES	MM	PSI	BAR	PSI	BAR	INCHES	MM	
HABU-12	3/4	19.4	1.32	33.5	3,000	206.8	7,500	517.1	5.00	127.0	0.39
HABU-16	1	25.4	1.56	39.6	3,000	206.8	7,500	517.1	8.00	203.2	0.53

MADE IN USA



## 4,000 PSI Series - LAGR



**A** yellow polyolefin tube, double high tensile synthetic fiber braid reinforcement, rugged polymer belting and abrasion resistant green polyether-urethane cover.

### NOMINAL SPECIFICATIONS

SERIES NUMBER	NOMINAL I.D.		NOMINAL O.D.		MAX. OPERATING PRESSURE		MIN. BURST PRESSURE		MIN. BEND RADIUS		Weight LBS/FT
	INCHES	MM	INCHES	MM	PSI	BAR	PSI	BAR	INCHES	MM	
LAGR-08	1/2	12.7	1.00	25.4	4,000	275.8	10,000	689.5	3.00	76.2	0.19

MADE IN USA

**GOODYEAR**  
GOODYEARBELTING.COM

Call Toll Free: 1-866-711-4673  
International: +1-727-342-5086

**We Ship  
World Wide**



# Piranha "Ready-To-Go" Stock Length Hose Assemblies

If you don't see what you need, please refer to page 11 for your "Made-To-Order" assembly length ordering instructions.

## 2,500 PSI



### SERIES SPOR - ORANGE COVER

PART NUMBER	SIZE CODE	HOSE I.D. (INCHES)	MALE NPTF NOM. THREAD SIZE	WORKING PRESSURE (MAX PSI)	ASSEMBLED LENGTH FT.
SPOR-MM12X400	12	3/4	3/4 - 14	2,500	400
SPOR-MM12X500	12	3/4	3/4 - 14	2,500	500
SPOR-MM12X600	12	3/4	3/4 - 14	2,500	600
SPOR-MM16X400	16	1	1-11 1/2	2,500	400
SPOR-MM16X500	16	1	1-11 1/2	2,500	500
SPOR-MM16X600	16	1	1-11 1/2	2,500	600
SPOR-MM16X800	16	1	1-11 1/2	2,500	800
SPOR-MM20X600	20	1	1 1/4 - 11 1/2	2,500	600

MADE IN USA

## 3,000 PSI



### SERIES HPBU - BLUE COVER

PART NUMBER	SIZE CODE	HOSE I.D. (INCHES)	MALE NPTF NOM. THREAD SIZE	WORKING PRESSURE (MAX PSI)	ASSEMBLED LENGTH FT.
HPBU-MM12X400	12	3/4	3/4 - 14	3,000	400
HPBU-MM12X500	12	3/4	3/4 - 14	3,000	500
HPBU-MM12X600	12	3/4	3/4 - 14	3,000	600
HPBU-MM16X500	16	1	1-11 1/2	3,000	500
HPBU-MM16X600	16	1	1-11 1/2	3,000	600
HPBU-MM16X800	16	1	1-11 1/2	3,000	800

MADE IN USA

## 4,000 PSI



### SERIES SHBK - BLACK COVER

PART NUMBER	SIZE CODE	HOSE I.D. (INCHES)	MALE NPTF NOM. THREAD SIZE	WORKING PRESSURE (MAX PSI)	ASSEMBLED LENGTH FT.
SHBK-MM08X400	08	1/2	1/2 - 14	4,000	400
SHBK-MM08X500	08	1/2	1/2 - 14	4,000	500
SHBK-MM08X600	08	1/2	1/2 - 14	4,000	600

MADE IN USA

**GOODYEAR**  
GOODYEARBELTING.COM

Call Toll Free: 1-866-711-4673  
International: +1-727-342-5086

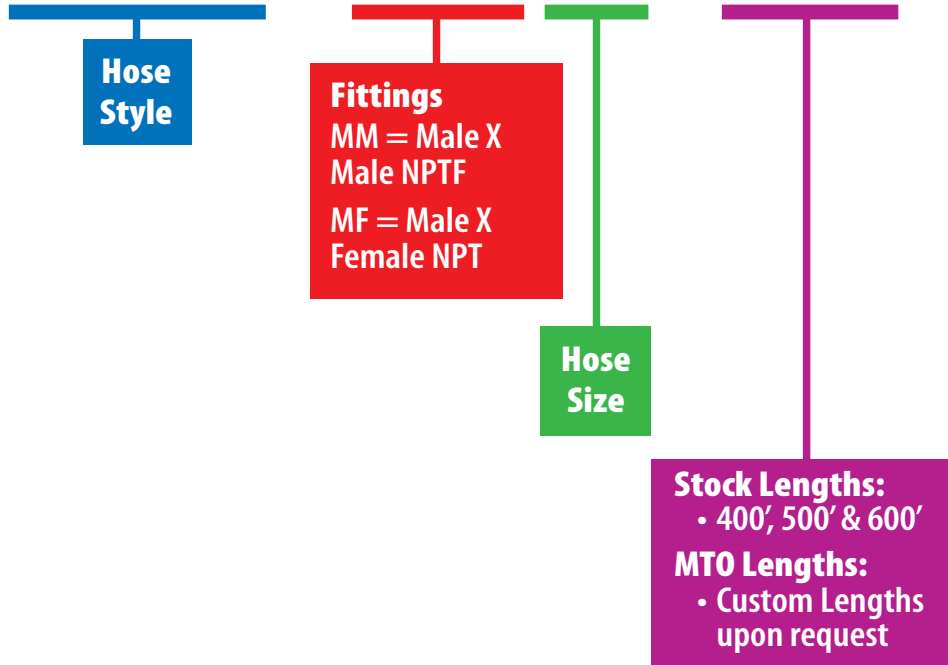
**We Ship  
World Wide**



# Standard & Custom Ordering Instructions

## Assembly Custom Part Numbering System:

Example: **SPOR - MM16X250**



Hose Style: \_\_\_\_\_

**GOODYEAR**  
GOODYEARBELTING.COM

Call Toll Free: 1-866-711-4673  
International: +1-727-342-5086

**We Ship  
World Wide**



# Fittings & Accessories for Piranha Hoses

**E**nd fittings and menders for thermoplastic hose are not interchangeable. It is essential that hose, end fittings, menders and tooling are properly matched. Identification of Piranha Hose Products is simple. The inner tube of all Piranha sewer cleaning hose is yellow, as assigned by WASTEC (Waste Equipment Technology Association) to the manufacturer's identification code. To assure proper matching of all components, the hose tube material, end fittings, menders and tooling should be purchased directly from Piranha Hose Products, Inc.



## MALE FITTINGS

PART NO.	USE WITH HOSE SERIES	WEIGHT
F06NPT6	LLGR, SLGR-06	.17 LBS
F08NPT8	LLBU, SLBU, LLGR, SLGR, LLRD, SLRD, LHBK, SLLHBK-08	.36 LBS
F10NPT8	SPOR, SLSPOR-10	.36 LBS
F12NPT12	SPOR, SLSPOR, HPBU, SLHPBU-12	.43 LBS
F16NPT16	SPOR, SLSPOR, HPBU, SLHPBU-16	.71 LBS
F20NPT20	SPOR, SLSPOR-20	1.00 LBS
FAR08NPT8	LAGR-08	.34 LBS
FAR10NPT8	SAOR-10	.42 LBS
FAR12NPT12	SAOR, HABU-12	.49 LBS
FAR16NPT16	SAOR, HABU-16	.79 LBS
FAR20NPT20	SAOR-20	1.03 LBS
FHP08NPT8	SHBK, SLSHBK-08	.28 LBS
FHP10NPT8	SHBK, SLSHBK-10	.34 LBS



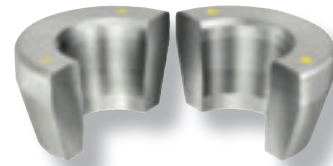
## FEMALE ADAPTER FITTINGS

PART NO.	USE WITH HOSE SERIES	WEIGHT
A06FPX06FS	LLGR, SLGR-06	.16 LBS
A08FPX08FS	LLBU, SLBU, LLGR, SLGR, LLRD, SLRD, SHBK, SLSHBK, LHBK, SLLHBK, LAGR-08 & SPOR, SLSPOR, SHBK, SLSHBK, SAOR-10	.21LBS
A12FPX12FS	SPOR, SLSPOR, HPBU, SLHPBU-12	.34 LBS



## FEMALE FITTINGS

PART NO.	USE WITH HOSE SERIES	WEIGHT
F08FS8	LLBU, SLBU, LLGR, SLGR, LHBK, SLLHBK-08	.29 LBS
F12FS12	SPOR, SLSPOR, HPBU, SLHPBU-12	.52 LBS
F16FS16	SPOR, SLSPOR, HPBU, SLHPBU-16	.81 LBS
FAR08FS8	LAGR-08	.38 LBS
FAR12FS12	SAOR, HABU-12	.60 LBS
FAR16FS16	SAOR, HABU-16	.90 LBS
FHP08FS8	SHBK, SLSHBK-08	.32 LBS



## DIES

PART NO.	USE WITH HOSE SERIES	WEIGHT
DS06	LLGR, SLGR-06	2.29 LBS
DS08	LLBU, SLBU, LLGR, SLGR, LHBK, SLLHBK-08	2.19 LBS
DS085	LLRD, SLRD-08	2.20 LBS
DS10	SPOR, SLSPOR-10	1.87 LBS
DS12	SPOR, SLSPOR, HPBU, SLHPBU-12	1.99 LBS
DS16	SPOR, SLSPOR, HPBU, SLHPBU-16	1.74 LBS
DS20	SPOR, SLSPOR-20	1.39 LBS
DSAR08	LAGR-08	2.13 LBS
DSAR12	SAOR, HABU-12	1.9 LBS
DSAR10	SAOR-10	1.97 LBS
DSAR16	SAOR, HABU-16	1.63 LBS
DSAR20	SAOR-20	1.21 LBS
DSHP08	SHBK, SLSHBK-08	2.15 LBS
DSHP10	SHBK, SLSHBK-10	2.18 LBS



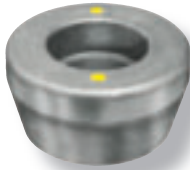
## MALE SWIVEL FITTING

PART NO.	USE WITH HOSE SERIES	WEIGHT
F06MSNPT6	LLGR, SLGR-06	.21 LBS



# Fittings & Accessories for Piranha Hoses & Swaging Equipment

## MALE PUSHERS



PART NO.	USE WITH HOSE SERIES	WEIGHT
DPT06	LLGR, SLGR-06	2.33 LBS
DPT08	LLBU, SLBU, LLGR, SLGR, LLRD, SLRD, LHBK, SLLHBK, SHBK, SLSHBK-08 & SHBK, SLSHBK, SPOR, SLSPOR-10	2.23 LBS
DPT12	SPOR, SLSPOR, HPBU, SLHPBU-12	2.11 LBS
DPT16	SPOR, SLSPOR, HPBU, SLHPBU-16	1.81 LBS
DPT20	SPOR, SLSPOR-20	1.66 LBS
DPTAR08	LAGR-08	2.19 LBS
DPTAR10	SAOR-10	2.19 LBS
DPTAR12	SAOR, HABU-12	2.07 LBS
DPTAR16	SAOR, HABU-16	1.77 LBS
DPTAR20	SAOR-20	1.39 LBS

## FEMALE PUSHERS



PART NO.	USE WITH HOSE SERIES	WEIGHT
DPT08FS	LLBU, SLBU, LLGR, SLGR, LHBK, SLLHBK, SHBK, SLSHBK-08	2.18 LBS
DPT12FS	SPOR, SLSPOR, HPBU, SLHPBU-12	1.87 LBS
DPT16FS	SPOR, SLSPOR, HPBU, SLHPBU-16	2.18 LBS
DPTAR08FS	LAGR-08	2.75 LBS
DPTAR12FS	SAOR, HABU-12	2.47 LBS
DPTAR16FS	SAOR, HABU-16	2.1 LBS

**NOTE:** THE USE OF FITTINGS AND ASSEMBLY TOOLING OTHER THAN THAT SUPPLIED BY PIRANHA HOSE PRODUCTS IS AT THE RISK AND LIABILITY OF THE USER.

## MENDERS

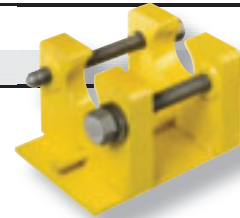


PART NO.	USE WITH HOSE SERIES	WEIGHT
F08MEND	SHBK, SLSHBK-08	.34 LBS
F10MEND	SPOR, SLSPOR-10	.34 LBS
F12MEND	SPOR, SLSPOR, HPBU, SLHPBU-12	.54 LBS
F16MEND	SPOR, SLSPOR, HPBU, SLHPBU-16	.77 LBS
F20MEND	SPOR, SLSPOR-20	1.22 LBS
FAR08MEND	LAGR-08	.39 LBS
FAR12MEND	SAOR, HABU-12	.69 LBS
FAR16MEND	SAOR, HABU-16	.98 LBS
FLL08MEND	LLBU, SLBU, LLGR, SLGR, LHBK, SLLHBK-08	.32 LBS
FA10MEND	SHBK, SLSHBK-10,	.44 LBS

## HORIZONTAL SWAGE TOOL

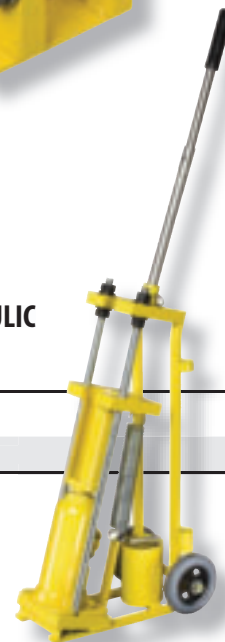
A PIRANHA SUPPLIED SWAGING MACHINE IS REQUIRED FOR THE INSTALLATION OF END FITTINGS AND MENDERS. ALL ASSEMBLY TOOLING IS DESIGNED AND PRODUCED TO BE COMPATABLE WITH THE PIRANHA HOSE PRODUCTS SUPPLIED SWAGING MACHINES.

PART NO.	WEIGHT
SWAGE HAND	25.5 LBS



## HAND OPERATED HYDRAULIC SWAGING MACHINE

PART NO.	WEIGHT
SWAGE-HYD-sales	59 LBS



**GOODYEAR**  
GOODYEARBELTING.COM

Call Toll Free: 1-866-711-4673  
International: +1-727-342-5086

**We Ship  
World Wide**



# New Crimping Equipment

## KD165 Package and Components

Now available from Piranha is the KD165 crimping system. This machine is capable of handling all of your assembly needs for Jetting / Lateral Line hose, as well as standard Sewer hose up to 1". This machine with its 60 ton press is built to get the job done.

## KD165 Specifications:

- **Dimensions** ..... L 22" X W 12.5" X H 22.25"
- **Weight** ..... See Below
- **Pump/Power** ..... Electric 1 HP (110V)
- **Reservoir** ..... 1 Gal.
- **Oil Type** ..... ISO Viscosity Grade 46
- **Hose Capacity** ..... 1" Jetting / Lateral Line  
..... 1" Standard Sewer

## KD165 Crimper Without Dies

PART NUMBER	DESCRIPTION	WEIGHT
KuriKrimp™ KD165 Crimper Without Dies: KD165	Hose Crimper 60 Ton	140.0 lbs



## KD165-124-PHP System for Piranha® Sewer Hose Fittings

PART NUMBER	DESCRIPTION	WEIGHT
<b>Complete KuriKrimp™ KD165 System For Piranha® Sewer Hose Fittings:</b>		
KD165-124-PHP	Complete System	165.0 lbs
<b>KuriKrimp™ KD165 System Standard Dies for Piranha® Fittings:</b>		
KD100-14/YellowRK	Standard Die 14mm Yellow	3.0 lbs
KD100-16/OrangeRK	Standard Die 16mm Orange	3.0 lbs
KD100-22/BlueRK	Standard Die 22mm Blue	3.0 lbs
KD100-27/BrownRK	Standard Die 27mm Brown	3.0 lbs
KD100-34/RedRK	Standard Die 34mm Red	3.0 lbs

Includes "NEW" KD100 Series Die Kages.



**NOTE:** THE USE OF FITTINGS AND ASSEMBLY TOOLING OTHER THAN THAT SUPPLIED BY PIRANHA HOSE PRODUCTS IS AT THE RISK AND LIABILITY OF THE USER.