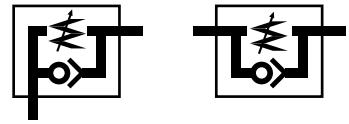


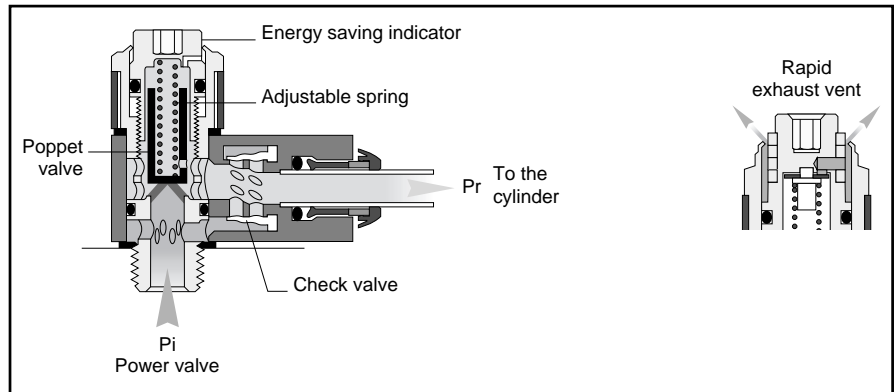
Prestoreduce Pressure reduction fittings



Principle

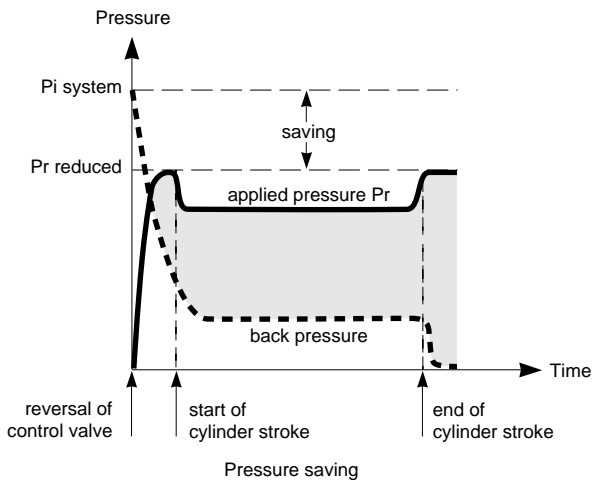
This function fitting is manually preset to provide the cylinder with optimum air pressure. This reduces the air consumption of the cylinder generating energy savings. This fitting is particularly suitable for cylinders used in cutting, pressing or gripping operations.

- System pressure (P_i) is reduced by a spring-loaded valve which can be calibrated by the set screw.
- The greater the reduction between inlet and outlet pressure the larger the energy savings.
- The coloured indicator shows the energy savings achieved.
- The purge vent allows rapid exhaust of air in emergencies.
- Adjustment can be made with an Allen key or manual ratchet control.
- An anti-tamper plug can be fitted after the pressure has been set.



Technical features

BODY MATERIAL		BOLT ASSEMBLY MATERIAL	BOLT THREAD	SEALING DEVICE	TERMINATORS		WORKING TEMP.	WORKING PRESSURE
PUSH-IN VERSION	THREAD VERSION							
Zinc Alloy	Brass Nickel Plated	Brass	1/8 BSPP 1/4 BSPP 3/8 BSPP 1/2 BSPP	Nylon Washer	6 to 10 mm Push-In	1/8 to 1/2 BSPP Female Thread	From 0° to +150° F	100 PSI



Alignment between the level of saving shown by the indicator and that shown by the marking

