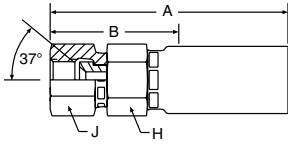


106LV (JIC) 37° Swivel

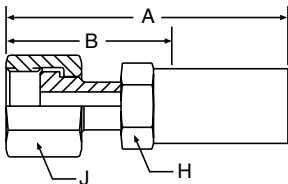


LV Series Permanent

Steel Part Number	B	C	Thread Size	Tube O. D.	Hose I.D.	A		Cutoff Allow. B		H Hex	J Hex	Pusher Number
						inch	mm	inch	mm			
#												
Hose Fitting				inch	inch	inch	mm	inch	mm	inch	inch	
106LV-4-3	+		7/16-20	1/4	3/16	1.90	48	0.94	24	9/16	9/16	PUF 017
106LV-8-8 (+)	+	+	3/4-16	1/2	1/2	3.75	95	1.69	43	15/16	15/16	PUF 016
106LV-10-10 (+)	+	+	7/8-14	5/8	5/8	3.93	100	1.75	44	1-1/16	1-1/16	PUF 006
106LV-12-12	+	+	1-1/16-12	3/4	3/4	4.12	105	1.81	46	1-1/8	1-1/4	PUF 008
106LV-16-16	+		1-5/16-12	1	1	4.77	121	1.72	44	1-3/8	1-1/2	PUF 009

*316 Stainless steel nipple, nut and shell

1JSLV Seal-Lok™ Straight



LV Series Permanent

Steel Part Number	B	C	Thread Size	Tube O. D.	Hose I.D.	A		Cutoff Allow. B		H Hex	J Hex
						inch	mm	inch	mm		
#											
Hose Fitting				inch	inch	inch	mm	inch	mm	inch	inch
1JSLV-4-3 (+)	+	+	9/16-18	3/16	1/4	1.90	49	0.94	24	9/16	11/16

*316 Stainless steel nipple, nut and shell

When swaging stainless steel fittings, lubricate dies with Parker-type 702 oil.

(+) Non Standard. See page ii for information on non-standard products.