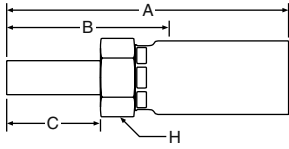


1TU58 Universal Tube Stub End

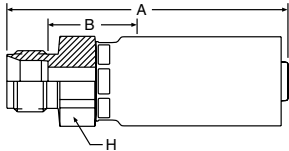


58 Series Permanent

Steel Part Number	C	Tube O.D.	Hose I.D.	A		Cutoff Allow. B		C		H Hex	Pusher Number
				inch	mm	inch	mm	inch	mm		
#											
Hose Fitting		inch	inch	inch	mm	inch	mm	inch	mm	inch	
1TU58-4-2		1/4	1/8	1.72	44	1	25	0.71	18	1/2	PUT 001
1TU58-4-4		1/4	1/4	2.60	66	1.50	38	0.72	18	5/8	PUT 001
1TU58-5-5 (+)	+	5/16	5/16	2.69	68	1.50	38	0.75	19	11/16	PUT 002
1TU58-6-6		3/8	3/8	2.91	74	1.50	38	0.78	20	3/4	PUT 003
1TU58-8-8		1/2	1/2	3.35	85	1.81	46	1.03	26	7/8	PUT 004
1TU58-10-10 (+)	+	5/8	5/8	3.45	88	1.81	46	1.03	26	1	PUT 004
1TU58-12-12 (+)	+	3/4	3/4	3.66	93	1.94	49	1.03	26	1-1/8	PUT 005
1TU58-16-16 (+)	+	1	1	4.41	112	2.19	56	1.29	33	1-3/8	PUT 007

*316 stainless nipple, shell

1AL58N A-LOK®/CPI Compression (Without Nut and Ferrule)



58 Series Permanent

Steel Part Number	C	Thread Size	Tube O.D.	Hose I.D.	A		Cutoff Allow. B		H Hex	Pusher Number
					inch	mm	inch	mm		
#										
Hose Fitting			inch	inch	inch	mm	inch	mm	inch	
1AL58-4-2N	+	7/16-20	1/4	1/8	1.56	40	0.63	16	1/2	Crimp Only
1AL58-4-4N		7/16-20	1/4	1/4	2.16	55	0.69	17	5/8	PUM 002
1AL58-6-6N		9/16-20	3/8	3/8	2.56	65	0.81	21	3/4	PUM 005
1AL58-8-8N		3/4-20	1/2	1/2	2.81	71	0.75	19	15/16	PUM 009

*316 Stainless nipple and shell.

Please reference Instrument Tubing Selection Guide, Bulletin 4200-TS, or contact the Instrumentation Connectors Division in Huntsville, Alabama, (Phone: 256-881-2040) directly for correct installation and application information.

(+) Non Standard. See page ii for information on non-standard products.