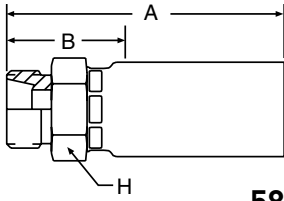


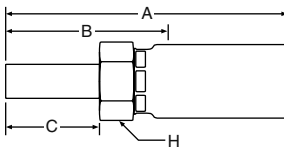
1D258 Male Stud DIN 20078 Heavy Series



58 Series Permanent

Steel Part Number	C	Thread Size	Tube O.D.	Hose I.D.	A		Cutoff Allow. B		H Hex	Pusher Number
					inch	mm	inch	mm		
#										
Hose Fitting				inch	inch	mm	inch	mm	mm	
1D258-10-4 (+)	+	M18x1,5	10	1/4	2.28	58	1.10	28	22	PUM 504
1D258-12-5 (+)	+	M20x1,5	12	5/16	2.44	62	1.18	30	24	PUM 505
1D258-14-6 (+)	+	M22x1,5	14	3/8	2.72	69	1.26	32	27	PUM 507
1D258-16-8 (+)	+	M24x1,5	16	1/2	2.87	73	1.26	32	27	PUM 507
1D258-20-12	+	M30x2	20	3/4	3.19	81	1.30	33	36	PUM 510
1D258-25-12	+	M36x2	25	3/4	3.27	83	1.38	35	41	PUM 511
1D258-30-16	+	M42x2	30	1	3.90	99	1.38	35	46	PUM 512

11D58 Metric Standpipe Light Series



58 Series Permanent

Steel Part Number	C	Tube O.D.	Hose I.D.	A		Cutoff Allow. B		C Hex	H Hex	Pusher Number
				inch	mm	inch	mm			
#										
Hose Fitting			inch	inch	mm	inch	mm	mm	mm	
11D58-8-4 (+)	+	8	1/4	2.60	66	1.42	36	22	17	PUM 502
11D58-10-5 (+)	+	10	5/16	2.76	70	1.46	37	23	17	PUM 502
11D58-10-6	+	10	3/8	2.95	75	1.46	37	23	19	PUM 502
11D58-12-6		12	3/8	2.95	75	1.50	38	23	19	PUM 503
11D58-15-8	+	15	1/2	3.23	82	1.61	41	25	22	PUM 504
11D58-18-12	+	18	3/4	3.23	82	1.54	39	25	30	PUM 508
11D58-22-12	+	22	3/4	3.66	93	1.77	45	28	30	PUM 508
11D58-28-16	+	28	1	4.17	106	1.85	47	30	41	PUM 511

(+) Non Standard. See page ii for information on non-standard products.

Hydraulic & Pneumatic Hose & Fit.
PTFE Hose & Fittings
Thermoplastic Tubing
Coiled Air Hose, Fittings & Accessories
Truck (Fleet) Products
Tooling & Equipment
Hose Accessories
Technical & Design Information
Approvals & Guides
numeric index