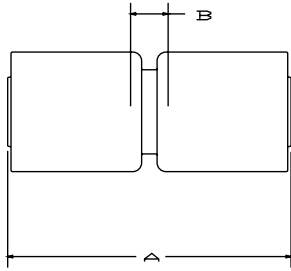
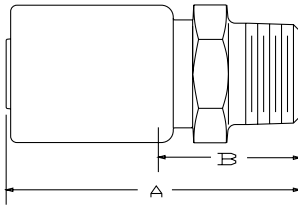


SQ Mender



Part Number	Steel Part Number	Hose I.D.	A		Cutoff Allow. B		Swage Die
			inch	mm	inch	mm	
#	#						
Hose	Fitting	inch	inch	mm	inch	mm	
S612	1HUSQ-12-12	3/4	3.70	94	0.53	14	SQ-101-12S6/S9
S616	1HUSQ-16-16	1	3.99	101	0.53	14	SQ-101-16S6
S620	1HUSQ-20-20	1 1/4	4.53	115	0.53	14	SQ-101-20S6
S912	1HUSQ-12-12	3/4	3.70	94	0.53	14	SQ-101-12S9
S916	1HUSQ-16-16	1	3.99	101	0.53	14	SQ-101-16S9

101SQ



Part Number	Steel Part Number	Hose I.D.	A		Cutoff Allow. B		Swage Die	Swage Pusher
			inch	mm	inch	mm		
#	#							
Hose	Fitting	inch	inch	mm	inch	mm		
S612	101SQ-12-12	3/4	3.70	94	0.53	13	SQ-101-12S6/S9	SQ-101-12P
S616	101SQ-16-16	1	3.99	101	0.53	13	SQ-101-16S6	SQ-101-16P
S620	101SQ-20-20	1 1/4	4.53	115	0.53	13	SQ-101-20S6	SQ-101-20P
S912	101SQ-12-12	3/4	3.70	94	0.53	13	SQ-101-12S9	SQ-101-12P
S916	101SQ-16-16	1	3.99	101	0.53	13	SQ-101-16S9	SQ-101-16P

PTFE Hose & Fittings

Thermoplastic Tubing

Coiled Air Hose, Fittings & Accessories

Truck (Fleet) Products

Tooling & Equipment

Hose Accessories

Technical & Design Information

Approvals & Guides

anumeric Index