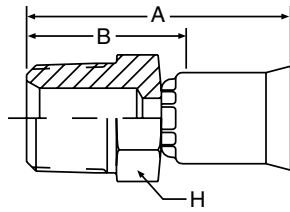


10191N Male Taper Pipe Rigid

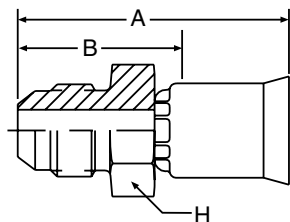


91N Series Permanent

*Part Number	B	C	NPTF Thread Size	A			Cutoff Allow. B		H Hex
#									
Hose Fitting				inch	inch	mm	inch	mm	inch
10191N-2-4			1/8-27	-4	1.27	32	3/4	19	7/16
10191N-4-4	+		1/4-18	-4	1.50	38	15/16	24	9/16
10191N-4-5	+		1/4-18	-5	1.55	39	15/16	24	9/16
10191N-4-6	+		1/4-18	-6	1.60	41	15/16	24	9/16
10191N-6-6	+		3/8-18	-6	1.65	58	1	25	11/16
10191N-6-8	+		3/8-18	-8	1.71	43	1	25	11/16
10191N-8-8	+		1/2-14	-8	1.94	49	1-1/4	32	7/8
10191N-8-10	+		1/2-14	-10	1.96	50	1-1/4	32	7/8
10191N-8-12 (+)	+	+	1/2-14	-12	2.42	61	1-1/4	32	7/8
10191N-12-12	+		3/4-14	-12	2.19	56	1-3/8	35	1-1/8
10191N-16-16	+		1-11-1/2	-16	2.46	62	1-1/2	38	1-3/8
10191-20-20			1-1/4-11-1/2	-20	3.05	77	2-1/16	52	1-3/4

* Brass nipple, steel shell.
 B - Brass nipple, brass shell.
 C - All components 303 stainless steel.

10391N Male (JIC) 37°



91N Series Permanent

*Part Number	B	C	NPTF Thread Size	A			Cutoff Allow. B		H Hex
#									
Hose Fitting				inch	inch	mm	inch	mm	inch
10391N-4-4	+	+	7/16-20	-4	1.37	35	13/16	21	1/2
10391N-5-5	+	+	1/2-20	-5	1.48	38	7/8	22	9/16
10391N-6-6 (+)	+	+	9/16-18	-6	1.64	42	1	25	11/16
10391N-8-8	+	+	3/4-16	-8	1.79	35	1-1/8	29	7/8
10391N-8-6	+	+	3/4-16	-6	1.73	44	1-1/16	27	7/8
10391N-10-10	+	+	7/8-14	-10	2.07	53	1-3/8	35	7/8
10391N-12-12	+	+	1-1/16-12	-12	2.10	53	1-5/16	33	1-1/8
10391N-16-16	+	+	1-5/16-12	-16	2.43	62	1-1/2	38	1-3/8

* Brass nipple, steel shell.
 B - Brass nipple, brass shell.
 C - All components 303 stainless steel.

(+) Non Standard. See page ii for information on non-standard products.