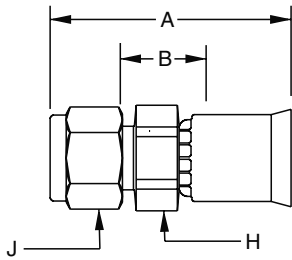


1P691N CPI® Compression (With Nut and Ferrule)



91N Series Permanent

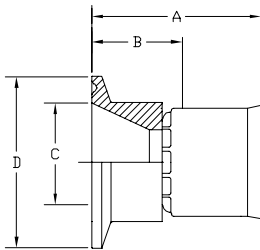
Part Number	Tube Size	A		Cutoff Allow. B		H Hex	J Hex	
		inch	mm	inch	mm	inch	inch	
#								
Hose Fitting	inch	inch	inch	mm	inch	mm	inch	inch
1P691N-4-4C (+)	-4	1/4	1.30	33	7/16	11	1/2	9/16
1P691N-4-5C (+)	-5	1/4	1.35	34	7/16	11	1/2	9/16
1P691N-6-6C (+)	-6	3/8	1.53	39	1/2	13	5/8	11/16
1P691N-8-8C (+)	-8	1/2	1.61	41	7/16	11	13/16	7/8
1P691N-12-12C (+)	-12	3/4	1.86	47	1/2	13	1-1/8	1-1/8
1P691N-16-16C (+)	-16	1	2.06	58	7/16	14	1-3/8	1-1/2

C - 316 stainless steel nipple, nut and ferrule; 303 stainless steel shell.

Note: Nut part No. is XBZ-SS; ferrule part No. is XTZ-SS. X denotes dash size.

Please reference Instrument Tubing Selection Guide, Bulletin 4200-TS, or contact the Instrumentation Connectors Division in Huntsville, Alabama, (Phone: 256-881-2040) directly for correct installation and application information.

1FN91N Sanitary Flange

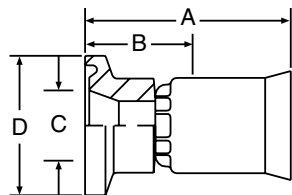


91N Series Permanent

Part Number	Flange Size D	A		Cutoff Allow. B		C		
		inch	mm	inch	mm	inch	mm	
#								
Hose Fitting	inch	inch	inch	mm	inch	mm	inch	mm
1FN91N-16-8C (+)	-8	1.98	1.69	43	1	25	0.87	22
1FN91N-16-10C (+)	-10	1.98	1.72	44	1-1/16	27	0.87	22
1FN91N-16-12C (+)	-12	1.98	1.82	46	1-1/16	27	0.87	22
1FN91N-16-16C (+)	-16	1.98	1.96	50	1-1/16	27	0.87	22
1FN91N-24-8C (+)	-8	1.98	2.33	59	1-5/8	41	1.37	43
1FN91N-24-12C (+)	-12	1.98	1.73	58	7/8	22	1.37	35
1FN91N-24-20C (+)	-20	1.98	2.20	56	15/16	24	1.37	35

C - 316L stainless steel nipple, 303 stainless steel shell.

1FV91N Mini Sanitary Flange



91N Series Permanent

Part Number	Flange Size D	A		Cutoff Allow. B		C		
		inch	mm	inch	mm	inch	mm	
#								
Hose Fitting	inch	inch	inch	mm	inch	mm	inch	mm
1FV91N-8-8C (+)	-8	0.99	1.37	35	11/16	17	0.50	13
1FV91N-12-12C (+)	-12	0.99	1.59	40	13/16	21	0.75	19

C - 316L stainless steel nipple, 303 stainless steel shell.

(+) Non Standard. See page ii for information on non-standard products.