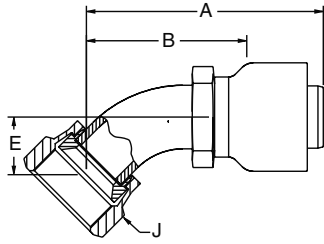


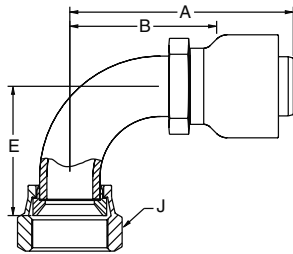
13793N JIC 37° Swivel 45° Elbow



*Part Number	C	NPTF Thread Size	Hose I.D.	A		Cutoff Allow. B		E		J Hex
				inch	mm	inch	mm	inch	mm	inch
#										
Hose Fitting			inch	inch	mm	inch	mm	inch	mm	inch
13793N-6-6	+	9/16-18	-6	2.04	52	1-7/16	37	.39	10	7/8
13793N-8-8 (+)	+	3/4-16	-8	2.31	59	1-5/8	41	.55	14	7/8
13793N-10-10 (+)	+	7/8-14	-10	2.56	65	1-15/16	49	.64	16	1
13793N-12-12 (+)	+	1-1/6-12	-12	3.37	86	2-1/4	57	.78	20	1-1/4
13793N-16-16 (+)	+	1-5/16-12	-16	3.71	94	2-5/8	67	.90	23	1-1/2
13793N-20-20 (+)	+	1-5/8-12	-20	4.06	103	2-3/4	70	1.18	43	2
13793N-24-24 (+)	+	1-7/8-12	-24	5.76	58	4-1/4	108	1.47	37	2-1/4
13793N-32-32 (+)	+	2-1/2-12	-32	7.04	179	5-5/8	143	2.06	52	2-7/8

* Steel nipple, tube, nut and shell.
 C - 316 stainless steel nipple, tube and nut; 303 stainless steel shell.

13993N JIC 37° Swivel 90° Elbow



*Part Number	C	NPTF Thread Size	Hose I.D.	A		Cutoff Allow. B		E		J Hex
				inch	mm	inch	mm	inch	mm	inch
#										
Hose Fitting			inch	inch	mm	inch	mm	inch	mm	inch
13993N-8-8 (+)	+	3/4-16	-8	2.20	56	1-9/16	40	1.09	28	7/8
13993N-10-10 (+)	+	7/8-14	-10	2.41	61	1-11/16	43	1.23	31	1
13993N-12-12	+	1-1/6-12	-12	3.28	83	2-3/16	56	1.82	46	1-1/4
13993N-16-16	+	1-5/16-12	-16	3.71	94	2-1/2	64	2.14	54	1-1/2
13993N-20-20	+	1-5/8-12	-20	3.89	99	2-9/16	65	2.57	43	2
13993N-24-24	+	1-7/8-12	-24	5.72	58	4-1/4	108	3.17	81	2-1/4
13993N-32-32 (+)	+	2-1/2-12	-32	6.47	164	5-1/16	129	4.59	117	2-7/8

* Steel nipple, tube, nut and shell.
 C - 316 stainless steel nipple, tube and nut; 303 stainless steel shell.

(+) Non Standard. See page ii for information on non-standard products.