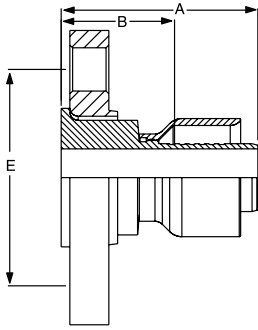


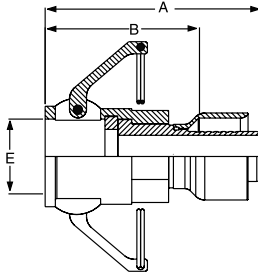
14K93N ANSI B16.5 Flange



*Part Number	C	Hose I.D.	Flange Diameter		Cutoff Allow. B		Bolt Diameter E
#							
Hose Fitting		inch	inch	inch	mm	inch	mm
14K93N-8-8 (+)	+	1/2	3-1/2	2.03	52	1-3/8	35
14K93N-12-12 (+)	+	3/4	3-7/8	2.70	69	1-3/4	44
14K93N-16-16 (+)	+	1	4-1/4	2.84	72	1-5/8	41
14K93N-20-20 (+)	+	1-1/4	4-5/8	2.98	76	1-5/8	41
14K93N-24-24 (+)	+	1-1/2	5	3.45	88	1-3/4	44
14K93N-32-32 (+)	+	2	6	3.62	58	2	51

* Steel nipple and shell, 304 stainless steel flange.
 C - 316 stainless steel nipple, 304 stainless steel flange, 303 stainless steel shell.
 Also available in 96N series.

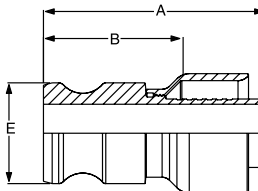
1FC93N Female Cam and Groove with BUNA N Gasket



*Part Number	C	Hose I.D.	A		Cutoff Allow. B		E
#							
Hose Fitting		inch	inch	mm	inch	mm	inch
1FC93N-12-8 (+)	+	1/2	3.32	84	2-11/16	68	1.26
1FC93N-12-12 (+)	+	3/4	3.92	100	2-13/16	71.44	1.26
1FC93N-16-16 (+)	+	1	4.22	107	3	76.20	1.44
1FC93N-20-20 (+)	+	1-1/4	4.48	114	3-3/16	80.96	1.79
1FC93N-24-24 (+)	+	1-1/2	5.10	130	3-7/16	83.31	2.10
1FC93N-32-32 (+)	+	2	5.20	58	3-1/2	88.90	2.48

* Steel nipple and shell, 316 stainless steel nut.
 C - 316 stainless steel nipple and nut, 303 stainless steel shell.
 Meets Military Standards MIL-C-27487 and MS-27019.
 Also available in 96N series.

1MC93N Male Cam and Groove



*Part Number	C	Hose I.D.	A		Cutoff Allow. B		E	
#								
Hose Fitting		inch	inch	mm	inch	mm	inch	mm
1MC93N-12-8 (+)		1/2	2.12	54	1-1/2	38	1.26	38.10
1MC93N-12-12 (+)		3/4	2.65	67	1-1/2	38	1.26	38.10
1MC93N-16-16 (+)		1	3.19	81	2	51	1.44	41.28
1MC93N-20-20 (+)		1-1/4	3.43	87	2-1/8	54	1.79	41.28
1MC93N-24-24 (+)		1-1/2	3.91	99	2-1/4	57	2.10	46.04
1MC93N-32-32 (+)		2	4.34	58	2-11/16	68	2.48	47.63

* Steel nipple and shell.
 C - 316 stainless steel nipple, 303 stainless steel shell.
 Meets Military Standards MIL-C-27487 and MS-27019.
 Also available in 96N series.

(+) Non Standard. See page ii for information on non-standard products.

Hydraulic & Pneumatic Hose & Fit.

PTFE Hose & Fittings

Thermoplastic Tubing

Coiled Air Hose, Fittings & Accessories

Truck (Fleet) Products

Tooling & Equipment

Hose Accessories

Technical & Design Information

Approvals & Guides

numeric index