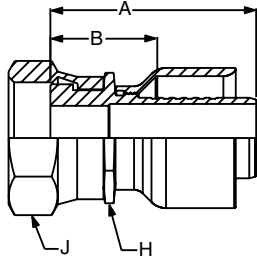


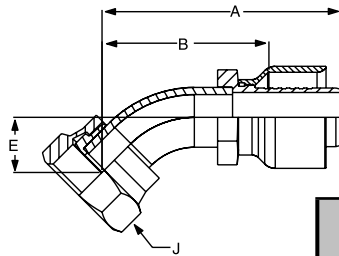
## 1JC93N Seal-Lok™ Straight



\* Steel nipple, nut and shell.  
C - 316 stainless steel nipple and nut, 303 stainless steel shell.  
Also available in 96N series.

*Part Number	C	Thread Size	Hose I.D.	Tube Size		Cutoff Allow. B		H Hex	J Hex
<b>#</b>									
Hose Fitting			inch	inch	mm	inch	mm	inch	inch
1JC93N-8-8 (+)	+	13/16-16	1/2	1/2	2.08 53	1	25	15/16	15/16
1JC93N-10-10 (+)	+	1-14	5/8	5/8	2.21 56	1-1/4	32	15/16	1-1/4
1JC93N-12-12 (+)	+	1-3/16-12	3/4	3/4	2.30 58	1-3/8	35	1-3/8	1-3/8
1JC93N-16-16	+	1-7/16-12	1	1	2.61 66	1-3/8	35	1-3/8	1-5/8
1JC93N-20-20	+	1-11/16-12	1-1/4	1-1/4	2.65 67	1-5/16	33	1-7/8	1-7/8

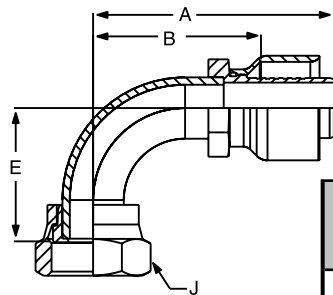
## 1J793N Seal-Lok™ 45° Elbow



\* Steel nipple, tube, nut and shell.  
C - 316 stainless steel nipple, tube and nut; 303 stainless steel shell.  
Also available in 96N series.

*Part Number	C	Thread Size	Hose I.D.	A		Cutoff Allow. B		E		J Hex
<b>#</b>										
Hose Fitting			inch	inch	mm	inch	mm	inch	mm	inch
1J793N-8-8 (+)	+	13/16-16	1/2	1.33 34	1-15/16	75	0.59 15	1		
1J793N-10-10 (+)	+	1-14	5/8	2.91 74	2-1/16	53	0.59 15	1-1/8		
1J793N-12-12 (+)	+	1-3/16-12	3/4	3.29 84	2-1/4	57	0.81 21	1-3/8		
1J793N-16-16 (+)	+	1-7/16-12	1	4.05 103	2-13/16	71	0.94 24	1-5/8		
1J793N-20-20 (+)	+	1-11/16-12	1-1/4	4.25 108	2-15/16	75	1.00 25	1-7/8		

## 1J993N Seal-Lok™ 90° Elbow



\* Steel nipple, tube, nut and shell.  
C - 316 stainless steel nipple, tube and nut; 303 stainless steel shell.  
Also available in 96N series.

*Part Number	C	Thread Size	Hose I.D.	A		Cutoff Allow. B		E		J Hex
<b>#</b>										
Hose Fitting			inch	inch	mm	inch	mm	inch	mm	inch
1J993N-8-8 (+)	+	13/16-16	1/2	2.23 57	1-3/4	44	1.15 29	15/16		
1J993N-10-10 (+)	+	1-14	5/8	2.67 68	1-7/8	48	1.27 32	1-1/4		
1J993N-12-12 (+)	+	1-3/16-12	3/4	2.88 73	2	51	1.54 39	1-3/8		
1J993N-16-16	+	1-7/16-12	1	4.00 102	2-3/4	70	2.21 56	1-5/8		
1J993N-20-20	+	1-11/16-12	1-1/4	4.36 111	3-1/16	78	2.51 64	1-7/8		

(+) Non Standard. See page ii for information on non-standard products.