

## Parflex Minute Machine PMM-1 Hand Swager

Operated with ordinary 1-1/2 open end or box wrench (not included).

Interchangeable with other popular types of hand swaging tools.

Best of all, factory perfect assemblies with Parflex hose can be made anywhere in the field by customers otherwise unfamiliar with ordinary rubber hose assembly procedures.



## SQ-101-SW Swager/Mender

Used for field assembly or repair on Predator S6 and S9 hoses

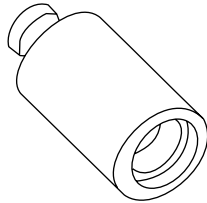


## Swager Tooling

(Sizes given in fittings section)

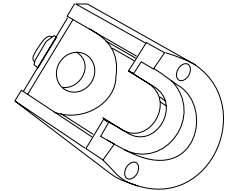
### Male Pushers

See Fittings Section for correct PUM part number.



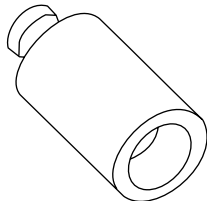
### Tube Pushers

See Fittings Section for correct PUT part number.



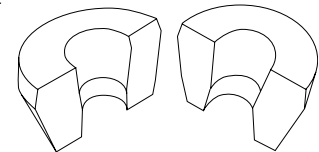
### Female Pushers

See Fittings Section for correct PUF & PUL part number.



### Split Dies

See Swage and Crimp Die Selection Chart for correct part number.



## HTC Hose & Tubing Cutter

### Features:

- Heavy duty steel construction & insulated grip
- Special V-block design & blade

### Multiple capabilities:

- Up to 1" hose/tubing OD
- Non-wire reinforced thermoplastic hose & tubing
- Non-wire reinforced rubber hose & tubing

### Advantages /Benefits:

- Durable & portable; weighs only 12 ounces
- Ensures a straight, clean cut
- Cutting edge first punctures, then cuts
- Minimal flattening of hose /tubing during cutting
- Straight/square cut enhances fitting retention
- Easily adjustable blade provides two cutting surfaces- doubles blade life
- Versatile; one tool for multiple applications- Air tools, auto repair shops, beverage dispensers, laboratories, many general industrial and commercial applications

Hydraulic & Pneumatic Hose & Fit.

PTFE Hose & Fittings

Thermoplastic Tubing

Coiled Air Hose, Fittings & Accessories

Truck (Fleet) Products

Tooling & Equipment

Hose Accessories

Technical & Design Information

Approvals & Guides

numeric index