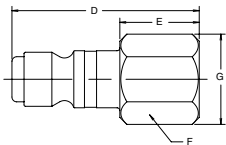
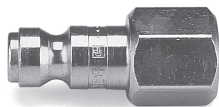


Pneumatic Quick Couplings

General Purpose – Manual Connect 10 Series

Nipples

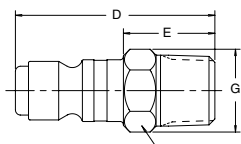
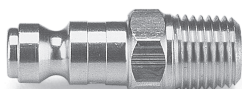
Female Pipe Thread



Body Size (in.)	Part No. Brass	Part No. Steel	Thread Size NPTF	Overall Length	Dimensions (in.)				Wt. (LB) P/Piece
					Exposed Length*	Hex Size	Largest Diameter		
				D	E	F	G		
1/4	–	1C	1/8-27	1.28	0.55	0.50	0.58	0.05	
1/4	B3C	3C	1/4-18	1.47	0.74	0.62	0.72	0.05	
1/4	–	3C-E	3/8-18	1.50	0.77	0.81	0.94	0.07	
3/8	–	1E	1/4-18	1.60	0.67	0.62	0.72	0.07	
3/8	–	3E	3/8-18	1.68	0.77	0.81	0.94	0.10	
1/2	–	1F	3/8-18	2.05	0.83	0.81	0.94	0.13	
1/2	–	3F	1/2-14	2.27	1.05	1.00	1.16	0.18	
1/2	–	H3F-G	3/4-14	2.38	1.13	1.25	1.44	0.26	

* This dimension represents portion of nipple that is exposed when nipple is inserted in a Parker 10 Series coupler.

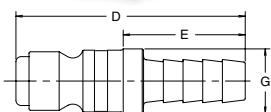
Male Pipe Thread



Body Size (in.)	Part No. Brass	Part No. Steel	Part No. Type 303 Stainless	Thread Size NPTF	Overall Length	Dimensions (in.)				Wt. (LB) P/Piece
						Exposed Length*	Hex Size	Largest Diameter		
					D	E	F	G		
1/4	–	0C	–	1/8-27	1.47	0.74	0.50	0.58	0.04	
1/4	B2C	2C	S2C	1/4-18	1.62	0.89	0.56	0.65	0.06	
1/4	–	2C-E	–	3/8-18	1.72	0.99	0.69	0.80	0.05	
3/8	–	0E	–	1/4-18	1.88	0.95	0.62	0.72	0.08	
3/8	–	2E	–	3/8-18	1.90	0.98	0.69	0.80	0.09	
1/2	–	0F	–	3/8-18	2.33	1.12	0.69	0.79	0.13	
1/2	–	2F	–	1/2-14	2.48	1.27	0.88	1.01	0.17	
1/2	–	H2F-G	–	3/4-14	2.53	1.29	1.13	1.30	0.24	

* This dimension represents portion of nipple that is exposed when nipple is inserted in a Parker 10 Series coupler.

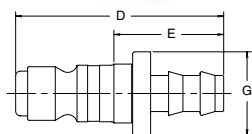
Standard Hose Barb



Body Size (in.)	Part No. Steel	Hose I.D.	Overall Length	Dimensions (in.)			Wt. (LB) P/Piece
				Exposed Length*	Largest Diameter		
			D	E	G		
1/4	8C	1/4	2.00	1.27	0.55	0.04	
1/4	9C	3/8	2.00	1.27	0.55	0.05	
3/8	5E	3/8	2.19	1.27	0.63	0.07	
1/2	H4F	3/8	2.53	1.29	0.69	0.08	
1/2	5F	1/2	2.81	1.60	0.81	0.11	
1/2	H5F-G	3/4	3.16	1.91	0.94	0.18	

* This dimension represents portion of nipple that is exposed when nipple is inserted in a Parker 10 Series coupler.

Push-Lok Hose Barb**



Body Size (in.)	Part No. Steel	Hose I.D.	Overall Length	Dimensions (in.)			Wt. (LB) P/Piece
				Exposed Length*	Largest Diameter		
			D	E	G		
1/4	8CP	1/4	1.84	1.10	0.69	0.04	
1/4	9CP	3/8	1.98	1.25	0.86	0.05	
3/8	5EP	3/8	2.17	1.25	0.86	0.08	
1/2	H4FP	3/8	2.52	1.27	0.86	0.11	
1/2	H5FP	1/2	2.66	1.42	0.97	0.11	

* This dimension represents portion of nipple that is exposed when nipple is inserted in a Parker 10 Series coupler.

** Push-Lok hose barbs are designed for use with Parker Push-Lok hose and do not require clamps.