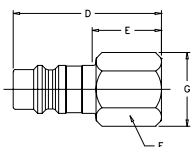


Pneumatic Quick Couplings

General Purpose – Push-To-Connect RF Series

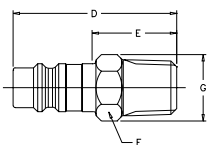
Nipples

Female Pipe Thread



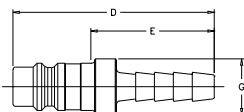
Body Size (in.)	NEW Part No.	OLD Part No.	Thread Size NPTF	Dimensions (in.)				Largest Diameter	Wt. (LB) P/Piece
				Overall Length	Exposed* Length	Hex Size	G		
1/4	RF-254-4FP	NRF02-4-4-S	1/4-18	1.45	0.68	0.62	0.72	0.06	
1/4	RF-254-6FP	NRF02-4-6-S	3/8-18	1.50	0.73	0.81	0.94	0.09	
3/8	RF-374-6FP	–	3/8-18	1.53	0.78	0.81	0.94	0.10	
3/8	RF-374-8FP	–	1/2-14	1.62	0.87	1.00	1.16	0.13	

Male Pipe Thread



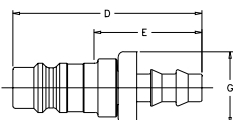
Body Size (in.)	NEW Part No.	OLD Part No.	Thread Size NPTF	Dimensions (in.)				Largest Diameter	Wt. (LB) P/Piece
				Overall Length	Exposed* Length	Hex Size	G		
1/4	RF-254-4MP	NRF01-4-4-S	1/4-18	1.60	0.83	0.56	0.65	0.05	
1/4	RF-254-6MP	NRF01-4-6-S	3/8-18	1.67	0.83	0.69	0.75	0.08	
3/8	RF-374-6MP	–	3/8-18	1.70	0.95	0.69	0.75	0.09	
3/8	RF-374-8MP	–	1/2-14	1.85	1.10	0.88	1.01	0.15	

Standard Hose Barb



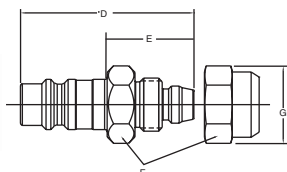
Body Size (in.)	NEW Part No.	OLD Part No.	Hose I.D.	Dimensions (in.)			Largest Diameter	Wt. (LB) P/Piece
				Overall Length	Exposed* Length	G		
1/4	RF-254-4HB	NRFHB-4-4-S	1/4	1.97	1.23	0.55	0.04	
1/4	RF-254-6HB	NRFHB-4-6-S	3/8	1.99	1.23	0.55	0.05	
3/8	RF-374-6HB	–	3/8	1.97	1.22	0.62	0.07	
3/8	RF-374-8HB	–	1/2	1.97	1.22	0.68	0.08	

Push-Lok Hose Barb



Body Size (in.)	NEW Part No.	OLD Part No.	Hose I.D.	Dimensions (in.)			Largest Diameter	Wt. (LB) P/Piece
				Overall Length	Exposed* Length	G		
1/4	RF-254-4PL	NRFPL-4-4-S	1/4	1.80	1.03	0.69	0.04	
1/4	RF-254-6PL	NRFPL-4-6-S	3/8	1.95	1.18	0.86	0.05	
3/8	RF-374-6PL	–	3/8	1.95	1.20	0.86	0.07	
3/8	RF-374-8PL	–	1/2	2.09	1.34	0.897	0.09	

NoMar™ Tube End (With Nut)



Body Size (in.)	NEW Part No.	Hose I.D.	Overall Length	Dimensions (in.)			Largest Diameter	Wt. (LB) P/Piece
				Exposed* Length	Hex Size	G		
1/4	RF-254-6X4NM	1/4" Tube I.D. 3/8" Tube O.D.	1.62	.85	.63	0.72	0.06	

* This dimension represents portion of nipple that is exposed when nipple is inserted in a Parker RF Series coupler.

Quick Coupling Division