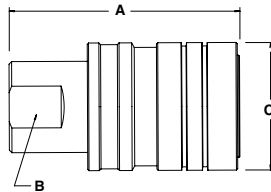
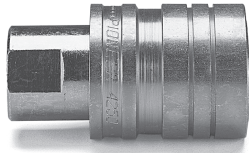


Hydraulic Quick Couplings

General Purpose Couplings 4200 Series

Couplers

Female Thread

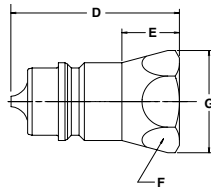


Body Size (in.)	Part No. Steel*	Thread Size NPTF	Thread Size ORB	Dimensions (in.)			Wt. (LB.) P/Piece
				Overall Length	Wrench Flats	Largest Diameter	
				A	B	C	
3/8	4250-3P	3/8-18	—	2.31	0.81	1.31	0.39
1/2	4250-4	1/2-14	—	2.68	0.94	1.50	0.55
1/2	4250-4P	1/2-14	—	2.68	0.94	1.50	0.55
1/2	4250-15	—	3/4-16	2.68	0.94	1.50	0.55
1/2	4250-15P	—	3/4-16	2.68	0.94	1.50	0.55

* P in part number designates Poppet design

Nipples

Female Thread

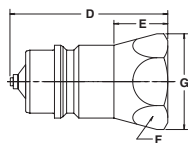


Body Size (in.)	Part No. Steel*	Thread Size NPTF	Thread Size ORB	Overall Length	Dimensions (in.)			Wt. (LB.) P/Piece
					Exposed Length**	Hex Size	Largest Diameter	
					D	E	F	G
3/8	4010-3P	3/8-18	—	1.60	0.80	0.94	1.08	0.16
1/2	8010-4	1/2-14	—	1.95	1.09	1.06	1.23	0.20
1/2	8010-4P	1/2-14	—	1.95	1.09	1.06	1.23	0.20
1/2	8010-15	—	3/4-16	2.06	1.20	1.06	1.23	0.20
1/2	8010-15P	—	3/4-16	2.06	1.20	1.06	1.23	0.20

* P in part number designates Poppet design

** This dimension represents the portion that is exposed when the nipple is inserted into the mating Parker Coupler.

Connect-Under-Pressure



Body Size (in.)	Part No. Steel*	Thread Size NPTF	Thread Size ORB	Thread Size BSPP	Overall Length	Dimensions (in.)			Wt. (LB.) P/Piece
						Exposed Length**	Hex Size	Largest Diameter	
						D	E	F	G
1/2	8010-4P-DC	1/2-14	—	—	1.81	1.09	1.06	1.16	0.20
1/2	8010-15P-DC	—	3/4-16	—	1.81	1.09	1.06	1.16	0.20

** This dimension represents the portion that is exposed when the nipple is inserted into the mating Parker Coupler.

Replacement Parts - 4200 Series

Body Size (in.)	Part Number	Description	Material
1/2	2-211N0552-90	O-Rings	Buna-N
3/8	2-116N0552-90	O-Rings	Buna-N

B Hydraulics

Quick Coupling Division