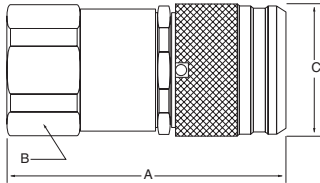
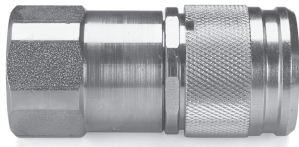


Hydraulic Quick Couplings

Non-Spill Couplings FE Series

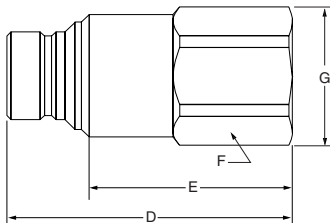
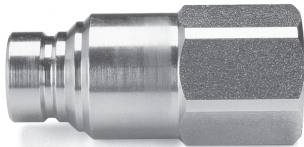
Couplers



Body Size (in.)	Part No. Steel	Thread Size	Dimensions (in.)			Wt. (LB.) P/Piece
			Overall Length	Hex Size	Largest Diameter	
			A	B	C	
1/2"	FE-501-8FP*	1/2-14 NPSF	2.65	1.38	1.58	0.85
1/2"	FE-501-12FO*	1-1/16-12 UNF	3.10	1.38	1.58	0.90
5/8"	FE-621-12FO*	1-1/16-12 UNF	3.67	1.62	1.74	1.51

* Non Sleeve Lock available – add “-NL” to part number

Nipples



Body Size (in.)	Part No. Steel	Thread Size	Dimensions (in.)				Wt. (LB.) P/Piece
			Overall Length	Exposed Length	Hex Size	Largest Diameter	
			D	E	F	G	
1/2"	FE-502-8FP	1/2-14 NPSF	2.77	1.96	1.25	1.38	0.55
1/2"	FE-502-12FO	1-1/16-12 UNF	3.05	2.20	1.38	1.50	0.56
5/8"	FE-622-12FO	1-1/16-12 UNF	3.40	2.60	1.50	1.65	0.95

Standard Port Configurations

- FP - Female Pipe Thread
- FO - Female Straight Thread

Quick Coupling Division