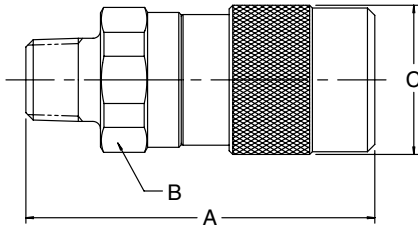


Hydraulic Quick Couplings

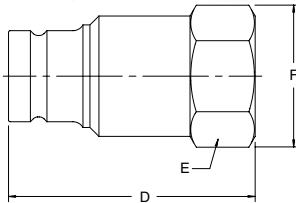
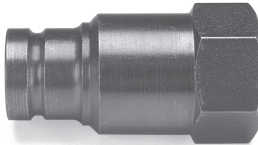
Non-Spill Couplings FH Series

Couplers



Body Size (in.)	Part No. Steel	Thread Size	Overall Length	Wrench Flats	Dimensions (in.)		Wt. (LB.) P/Piece
					A	B	
3/8	FH-371-6FP	3/8 -18 NPTF	2.63	1.12	1.23		0.44
3/8	FH-371-6MP	3/8 -18 NPTF	2.85	1.12	1.23		0.45
3/8	FH-371-6FB	G3/8 -BSPP	2.55	1.12	1.23		0.45

Nipples



Body Size (in.)	Part No. Steel	Thread Size	Overall Length	Wrench Flats	Dimensions (in.)		Wt. (LB.) P/Piece
					D	E	
3/8	FH-372-6FP	3/8-18 NPTF	2.12	1.00	1.23		0.26
3/8	FH-372-6FB	G3/8 -BSPP	2.12	1.00	1.23		0.28

Standard Port Configurations

- FP - Female Pipe Thread
- MP - Male Pipe Thread
- FB - Female British Standard Parallel

Quick Coupling Division