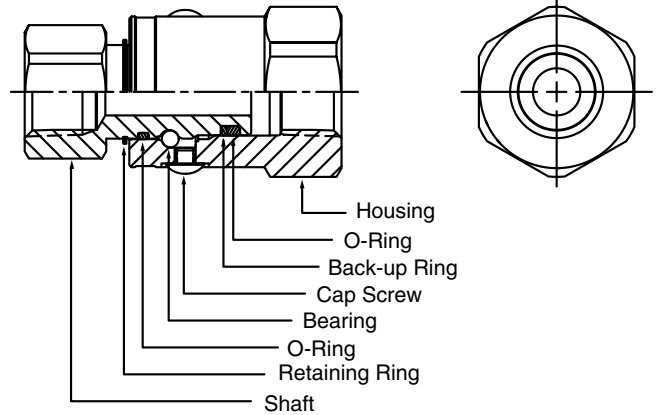
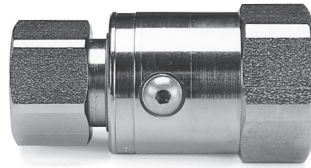


# Swivels

# In-Line PS Series

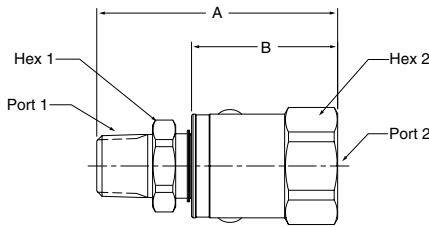


### Materials Of Construction

- Housing\*: .....Carbon Steel
- Shaft\*: .....Carbon Steel
- Plating\*: .....Zinc with Yellow Chromate
- Bearing\*: .....Chrome
- O-Rings\*: .....Buna-N
- Back-Up Ring:.....PTFE

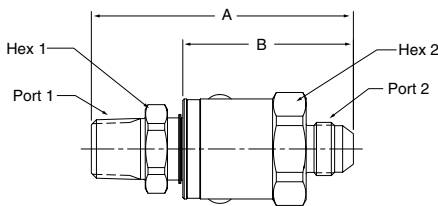
\* See How-To-Order for optional material, plating, and seals.

### Male Pipe - Female Pipe



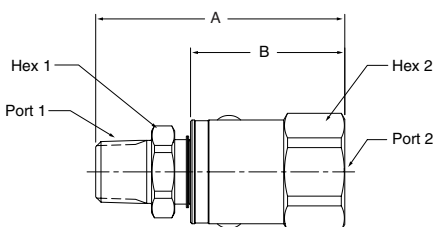
Part Number	A	B	Hex 1	Hex 2	Port 1	Port 2
PS410102-4-4	2.87" 72.9 mm	1.85" 47.0 mm	.75" 19.0 mm	1.19" 30.2 mm	1/4-18 NPTF	1/4-18 NPTF
PS610102-6-6	2.98" 75.6 mm	1.92" 48.8 mm	.88" 22.2 mm	1.31" 33.3 mm	3/8-18 NPTF	3/8-18 NPTF
PS810102-8-8	3.24" 82.2 mm	1.96" 50.0 mm	1.12" 28.6 mm	1.50" 36.5 mm	1/2-14 NPTF	1/2-14 NPTF
PS1210102-12-12	3.46" 87.8 mm	2.16" 55.0 mm	1.38" 35.0 mm	1.69" 42.9 mm	3/4-14 NPTF	3/4-14 NPTF
PS1610102-16-16	3.74" 95.1 mm	2.26" 57.4 mm	1.62" 41.3 mm	1.88" 47.6 mm	1-11 1/2 NPTF	1-11 1/2 NPTF

### Male Pipe - Male 37° Flare



Part Number	A	B	Hex 1	Hex 2	Port 1	Port 2
PS410103-4-4	3.11" 78.9 mm	2.08" 53.0 mm	.75" 19.0 mm	1.19" 30.2 mm	1/4-18 NPTF	7/16-20 UNF-2A
PS610103-6-6	3.23" 82.0 mm	2.18" 55.2 mm	.88" 22.2	1.31" 33.3 mm	3/8-18 NPTF	9/16-18 UNF-2A
PS810103-8-8	3.65" 92.6 mm	2.38" 60.3 mm	1.12" 28.6 mm	1.50" 36.5 mm	1/2-14 NPTF	3/4-16 UNF-2A
PS1210103-12-12	3.86" 98.1 mm	2.57" 65.3 mm	1.38" 35.0 mm	1.69" 42.9 mm	3/4-14 NPTF	1-1/16-12 UN-2A
PS1610103-16-16	4.09" 103.8 mm	2.60" 66.2 mm	1.62" 41.3 mm	1.88" 47.6 mm	1-11 1/2 NPTF	1-5/16-12 UN-2A

### Male Pipe - Female 37° Flare



Part Number	A	B	Hex 1	Hex 2	Port 1	Port 2
PS410106-4-4	2.96" 75.2 mm	1.94" 49.3 mm	.75" 19.0 mm	1.19" 30.2 mm	1/4-18 NPTF	7/16-20 UNF-2B
PS610106-6-6	3.06" 77.7 mm	2.00" 50.9 mm	.88" 22.2 mm	1.31" 33.3 mm	3/8-18 NPTF	9/16-18 UNF-2B
PS810106-8-8	3.34" 84.9 mm	2.07" 52.6 mm	1.12" 28.6 mm	1.50" 36.5 mm	1/2-14 NPTF	3/4-16 UNF-2B
PS1210106-12-12	3.58" 91.0 mm	2.29" 58.2 mm	1.38" 35.0 mm	1.69" 42.9 mm	3/4-14 NPTF	1-1/16-12 UN-2B
PS1610106-16-16	3.84" 97.5 mm	2.36" 60.0 mm	1.62" 41.3 mm	1.88" 47.6 mm	1-11 1/2 NPTF	1-5/16-12 UN-2B

Quick Coupling Division