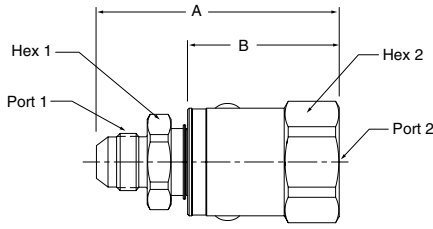
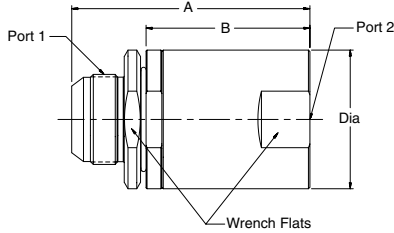


Male 37° Flare - Female SAE Straight Thread



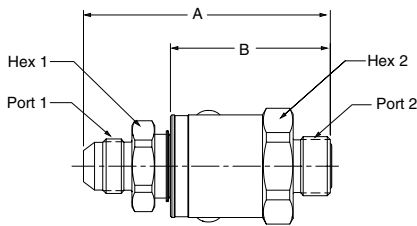
3 Piece Design



Part Number	A	B	Hex 1	Hex 2	Port 1	Port 2
PS410310-4-4	2.88" 72.9 mm	1.85" 47.0 mm	.75" 19.0 mm	1.19" 30.2 mm	7/16-20 UNF-2A	7/16-20 UNF-2B
PS610310-6-6	2.98" 75.6 mm	1.92" 48.8 mm	.88" 22.2 mm	1.31" 33.3 mm	9/16-18 UNF-2A	9/16-18 UNF-2B
PS810310-8-8	3.14" 79.8 mm	1.96" 50.0 mm	1.12" 28.6 mm	1.50" 36.5 mm	3/4-16 UNF-2A	3/4-16 UNF-2B
PS1210310-12-12	3.56" 90.5 mm	2.16" 55.0 mm	1.38" 35.0 mm	1.69" 42.9 mm	1-1/16-12 UN-2A	1-1/16-12 UN-2B
PS1610310-16-16	3.74" 95.1 mm	2.26" 57.4 mm	1.62" 41.3 mm	1.88" 47.6 mm	1-5/16-12 UN-2A	1-5/16-12 UN-2B

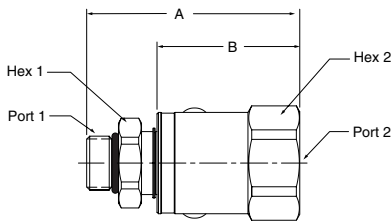
Part Number	A	B	C	D	Dia.	Wrench Flats	Port 1	Port 2
PS2410310-20-20	6.16" 150.2 mm	4.63" 117.5 mm	3.43" 87.0 mm	1.27" 32.3 mm	2.63" 66.7 mm	3.36" 85.2 mm	1 5/8-12 UN-2A	1 5/8-12 UN-2B
PS2410310-24-24	6.16" 150.2 mm	4.63" 117.5 mm	3.43" 87.0 mm	1.27" 32.3 mm	2.63" 66.7 mm	3.36" 85.2 mm	17/8-12 UN-2A	17/8-12 UN-2B
PS3210310-32-32	7.38" 187.4 mm	5.45" 138.4 mm	3.93" 99.7 mm	1.52" 38.5 mm	3.06" 77.6 mm	4.19" 106.4 mm	2 1/2-12 UN-2A	2-1/2-12 UN-2B

Male 37° Flare - O-Ring Face Seal



Part Number	A	B	Hex 1	Hex 2	Port 1	Port 2
PS4103JM-4-4	2.99" 76.0 mm	1.97" 50.0 mm	.75" 19.0 mm	1.19" 30.2 mm	7/16-20 UNF-2A	9/16-18 UNF-2A
PS6103JM-6-6	3.14" 79.6 mm	2.08" 52.8 mm	.88" 22.2 mm	1.31" 33.3 mm	9/16-18 UNF-2A	11/16-18 UNF-2A
PS8103JM-8-8	3.35" 85.1 mm	2.17" 55.1 mm	1.12" 28.6 mm	1.50" 36.5 mm	3/4-16 UNF-2A	13/16-16 UNF-2A
PS8103JM-10-10	3.56" 90.3 mm	2.28" 57.8 mm	1.12" 28.6 mm	1.50" 36.5 mm	7/8-14 UNF-2A	7/8-14 UNF-2A
PS12103JM-12-12	3.76" 95.4 mm	2.36" 60.0 mm	1.38" 35.0 mm	1.69" 42.9 mm	1-1/16-12 UN-2A	1-3/16-12 UN-2A
PS16103JM-16-16	3.84" 97.5 mm	2.36" 60.0 mm	1.62" 41.3 mm	1.88" 47.6 mm	1-5/16-12 UN-2A	1-7/16-12 UN-2A

Male SAE O-Ring Straight Thread - Female Pipe



Part Number	A	B	Hex 1	Hex 2	Port 1	Port 2
PS410502-4-4	2.67" 67.8 mm	1.85" 47.0 mm	.75" 19.0 mm	1.19" 30.2 mm	7/16-20 UNF-2A	1/4-18 NPTF
PS610502-6-6	2.85" 72.5 mm	1.92" 48.8 mm	.88" 22.2 mm	1.31" 33.3 mm	9/16-18 UNF-2A	3/8-18 NPTF
PS810502-8-8	2.93" 74.4 mm	1.96" 50.0 mm	1.12" 28.6 mm	1.50" 36.5 mm	3/4-16 UN-2A	1/2-14 NPTF
PS1210502-12-12	3.29" 83.6 mm	2.16" 55.0 mm	1.38" 35.0 mm	1.69" 42.9 mm	1-1/16-12 UN-2A	3/4-14 NPTF
PS1610502-16-16	3.40" 86.2 mm	2.26" 57.4 mm	1.62" 41.3 mm	1.88" 47.6 mm	1-5/16-12 UN-2A	1-11/16-12 NPTF

D Swivels