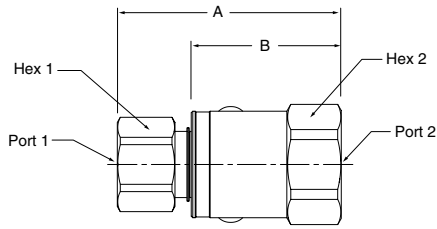


# Swivels

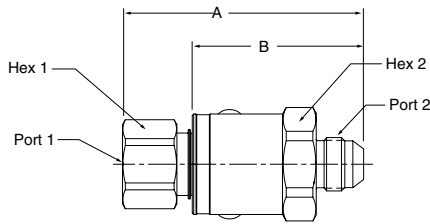
## In-Line PS Series

### Female SAE Straight Thread - Female Pipe



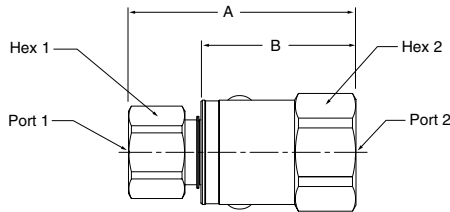
Part Number	A	B	Hex 1	Hex 2	Port 1	Port 2
PS411002-4-4	2.60" 66.1 mm	1.85" 47.0 mm	.75" 19.0 mm	1.19" 30.2 mm	7/16-20 UNF-2B	1/4-18 NPTF
PS611002-6-6	2.77" 70.4 mm	1.92" 48.8 mm	.88" 22.2 mm	1.31" 33.3 mm	9/16-18 UNF-2B	3/8-18 NPTF
PS811002-8-8	2.93" 74.4 mm	1.96" 50.0 mm	1.12" 28.6 mm	1.50" 36.5 mm	3/4-16 UNF-2B	1/2-14 NPTF
PS1211002-12-12	3.39" 86.2 mm	2.16" 55.0 mm	1.38" 35.0 mm	1.69" 42.9 mm	1-1/16-12 UN-2B	3/4-14 NPTF
PS1611002-16-16	3.52" 89.4 mm	2.26" 57.4 mm	1.62" 41.3 mm	1.88" 47.6 mm	1-5/16-12 UN-2B	1-11 1/2 NPTF

### Female SAE Straight Thread - Male 37° Flare



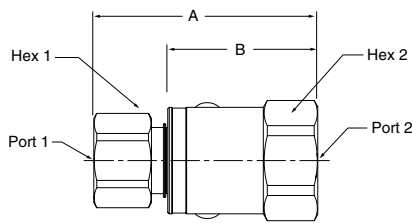
Part Number	A	B	Hex 1	Hex 2	Port 1	Port 2
PS411003-4-4	2.84" 72.0 mm	2.08" 53.0 mm	.75" 19.0 mm	1.19" 30.2 mm	7/16-20 UNF-2B	7/16-20 UNF-2A
PS611003-6-6	3.03" 76.9 mm	2.18" 55.2 mm	.88" 22.2 mm	1.31" 33.3 mm	9/16-18 UNF-2B	9/16-18 UNF-2A
PS811003-8-8	3.34" 84.9 mm	2.38" 60.3 mm	1.12" 28.6 mm	1.50" 36.5 mm	3/4-16 UNF-2B	3/4-16 UNF-2A
PS1211003-12-12	3.80" 96.5 mm	2.57" 65.3 mm	1.38" 35.0 mm	1.69" 42.9 mm	1-1/16-12 UN-2B	1-1/16-12 UN-2A
PS1611003-16-16	3.86" 98.1 mm	2.60" 66.2 mm	1.62" 41.3 mm	1.88" 47.6 mm	1-5/16-12 UN-2B	1-5/16-12 UN-2A

### Female SAE Straight Thread - Female 37° Flare



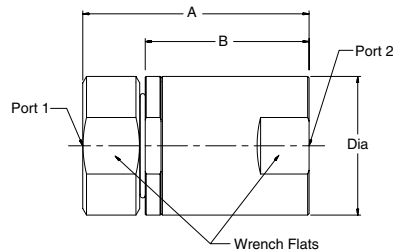
Part Number	A	B	Hex 1	Hex 2	Port 1	Port 2
PS411006-4-4	2.69" 68.4 mm	1.94" 49.3 mm	.75" 19.0 mm	1.19" 30.2 mm	7/16-20 UNF-2B	7/16-20 UNF-2B
PS611006-6-6	2.86" 72.5 mm	2.00" 50.9 mm	.88" 22.2 mm	1.31" 33.3 mm	9/16-18 UNF-2B	9/16-18 UNF-2B
PS811006-8-8	3.04" 77.1 mm	2.07" 52.6 mm	1.12" 28.6 mm	1.50" 36.5 mm	3/4-16 UNF-2B	3/4-16 UNF-2B
PS1211006-12-12	3.52" 89.4 mm	2.29" 58.2 mm	1.38" 35.0 mm	1.69" 42.9 mm	1-1/16-12 UN-2B	1-1/16-12 UN-2B
PS1611006-16-16	3.61" 91.8 mm	2.36" 60.0 mm	1.62" 41.3 mm	1.88" 47.6 mm	1-5/16-12 UN-2B	1-5/16-12 UN-2B

### Female SAE Straight Thread - Female SAE Straight Thread



Part Number	A	B	Hex 1	Hex 2	Port 1	Port 2
PS411010-4-4	2.60" 66.1 mm	1.85" 47.0 mm	.75" 19.0 mm	1.19" 30.2 mm	7/16-20 UNF-2B	7/16-20 UNF-2B
PS611010-6-6	2.77" 70.4 mm	1.92" 48.8 mm	.88" 22.2 mm	1.31" 33.3 mm	9/16-18 UNF-2B	9/16-18 UNF-2B
PS811010-8-8	2.93" 74.4 mm	1.96" 50.0 mm	1.12" 28.6 mm	1.50" 36.5 mm	3/4-16 UNF-2B	3/4-16 UNF-2B
PS1211010-12-12	3.39" 86.2 mm	2.16" 55.0 mm	1.38" 35.0 mm	1.69" 42.9 mm	1-1/16-12 UN-2B	1-1/16-12 UN-2B
PS1611010-16-16	3.52" 89.4 mm	2.26" 57.4 mm	1.62" 41.3 mm	1.88" 47.6 mm	1-5/16-12 UN-2B	1-5/16-12 UN-2B

#### 3 Piece Design



Part Number	A	B	C	D	Wrench Flats	Dia.	Port 1	Port 2
PS2411010-20-20	5.91" 150.2 mm	4.63" 117.5 mm	3.43" 87.0 mm	1.27" 32.3 mm	2.63" 66.7 mm	3.36" 85.2 mm	1 5/8-12 UN-2B	1 5/8-12 UN-2B
PS2411010-24-24	5.91" 150.2 mm	4.63" 117.5 mm	3.43" 87.0 mm	1.27" 32.3 mm	2.63" 66.7 mm	3.36" 85.2 mm	1 7/8-12 UN-2B	1 7/8-12 UN-2B
PS3211010-32-32	6.83" 173.6 mm	5.45" 138.4 mm	3.93" 99.7 mm	1.52" 38.5 mm	3.06" 77.6 mm	4.19" 106.4 mm	2 1/2-12 UN-2B	2-1/2-12 UN-2B

Quick Coupling Division