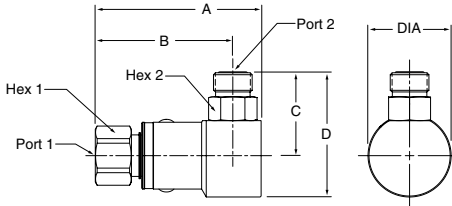


Swivels

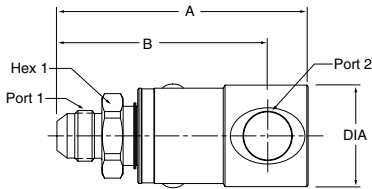
90° PS Series

Female Pipe - O-Ring Face Seal



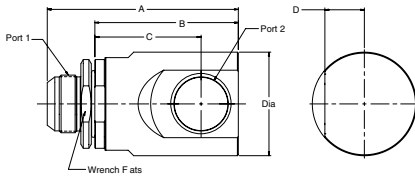
Part Number	A	B	C	D	Dia.	Hex 1	Hex 2	Port 1	Port 2
PS4902JM-4-4	2.87" 72.8 mm	2.46" 62.5 mm	1.29" 32.5 mm	1.89" 47.9 mm	1.20" 30.5 mm	.75" 19.0 mm	.56" 14.3 mm	1/4-18 NPTF	9/16-18 UNF-2A
PS6902JM-6-6	3.19" 80.9 mm	2.68" 68.0 mm	1.40" 35.6 mm	2.05" 52.0 mm	1.29" 32.8 mm	.88" 22.2 mm	.69" 17.5 mm	3/8-18 NPTF	11/16-16 UN-2A
PS8902JM-8-8	3.46" 87.8 mm	2.87" 72.8 mm	1.74" 44.1 mm	2.60" 66.1 mm	1.73" 44.0 mm	1.12" 28.6 mm	.88" 22.2 mm	1/2-14 NPTF	13/16-16 UN-2A
PS12902JM-12-12	3.78" 96.0 mm	3.11" 79.0 mm	2.18" 55.4 mm	3.27" 83.0 mm	2.17" 55.2 mm	1.38" 35.0 mm	1.25" 31.8 mm	3/4-14 NPTF	1-3/16-12 UN-2A
PS16902JM-16-16	4.32" 109.8 mm	3.46" 87.9 mm	2.34" 59.6 mm	3.59" 91.1 mm	2.48" 63.0 mm	1.62" 41.3 mm	1.50" 38.1 mm	1-11/2 NPTF	1-7/16-12 UN-2A

Male 37° Flare - Female Pipe



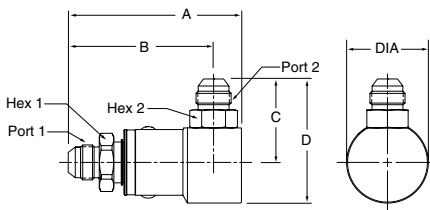
Part Number	A	B	Dia.	Hex 1	Port 1	Port 2
PS490302-4-4	3.14" 79.7 mm	2.73" 69.4 mm	1.20" 30.5 mm	.75" 19.0 mm	7/16-20 UNF-2A	1/4-18 NPTF
PS690302-6-6	3.39" 86.1 mm	2.88" 73.2 mm	1.29" 32.8 mm	.88" 22.2 mm	9/16-18 UNF-2A	3/8-18 NPTF
PS890302-8-8	3.67" 93.2 mm	3.08" 78.2 mm	1.49" 37.8 mm	1.12" 28.6 mm	3/4-16 UNF-2A	1/2-14 NPTF
PS1290302-12-12	4.21" 106.8 mm	3.54" 89.8 mm	1.76" 44.6 mm	1.38" 35.0 mm	1-1/16-12 UN-2A	3/4-14 NPTF
PS1690302-16-16	4.67" 118.7 mm	3.81" 97.0 mm	2.16" 54.9 mm	1.62" 41.3 mm	1-5/16-12 UN-2A	1-11/2 NPTF

3 Piece Design



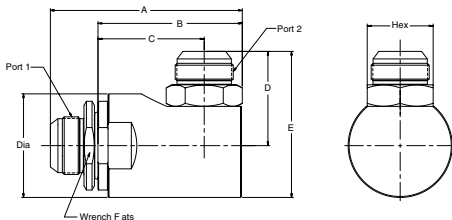
Part Number	A	B	C	D	Wrench Flats	Dia.	Port 1	Port 2
PS2490302-20-20	6.16" 150.2 mm	4.63" 117.5 mm	3.43" 87.0 mm	1.27" 32.3 mm	2.63" 66.7 mm	3.36" 85.2 mm	1 5/8-12 UN-2A	1 1/4-11 1/2 NPTF
PS2490302-24-24	6.16" 150.2 mm	4.63" 117.5 mm	3.43" 87.0 mm	1.27" 32.3 mm	2.63" 66.7 mm	3.36" 85.2 mm	1 7/8-12 UN-2A	1 1/2-11 1/2 NPTF
PS3290302-32-32	7.38" 187.4 mm	5.45" 138.4 mm	3.93" 99.7 mm	1.52" 38.5 mm	3.06" 77.6 mm	4.19" 106.4 mm	2 1/2-12 UN-2A	2-11-1/2 NPTF

Male 37° Flare - Male 37° Flare



Part Number	A	B	C	D	Dia.	Hex 1	Hex 2	Port 1	Port 2
PS490303-4-4	3.14" 79.7 mm	2.73" 69.4 mm	1.39" 35.2 mm	1.99" 50.5 mm	1.20" 30.5 mm	.75" 19.0 mm	.56" 14.3 mm	7/16-20 UNF-2A	7/16-20 UNF-2A
PS690303-6-6	3.39" 86.1 mm	2.88" 73.2 mm	1.44" 36.6 mm	2.09" 53.0 mm	1.29" 32.8 mm	.88" 22.2 mm	.69" 17.5 mm	9/16-18 UNF-2A	9/16-18 UNF-2A
PS890303-8-8	3.67" 93.2 mm	3.08" 78.2 mm	1.78" 45.1 mm	2.64" 67.1 mm	1.73" 44.0 mm	1.12" 28.6 mm	.88" 22.2 mm	3/4-16 UNF-2A	3/4-16 UNF-2A
PS890303-10-10	3.77" 95.8 mm	3.18" 80.8 mm	1.90" 48.4 mm	2.77" 70.4 mm	1.73" 44.0 mm	1.12" 28.6 mm	.88" 22.2 mm	7/8-14 UNF-2A	7/8-14 UNF-2A
PS1290303-12-12	4.21" 106.8 mm	3.54" 89.8 mm	2.24" 56.9 mm	3.86" 98.3 mm	2.17" 55.2 mm	1.38" 35.0 mm	1.25" 31.8 mm	1-1/16-12 UN-2A	1-1/16-12 UN-2A
PS1690303-16-16	4.67" 118.7 mm	3.81" 97.0 mm	2.42" 61.3 mm	3.66" 92.9 mm	2.48" 63.0 mm	1.62" 41.3 mm	1.50" 38.1 mm	1-5/16-12 UN-2A	1-5/16-12 UN-2A

3 Piece Design



Part Number	A	B	C	D	E	Hex	Wrench Flats	Dia.	Port 1	Port 2
PS2490303-20-20	6.16" 156.4 mm	4.63" 117.5 mm	3.43" 87.0 mm	2.85" 72.4 mm	4.53" 115.0 mm	1.88" 47.6 mm	2.63" 66.7 mm	3.36" 85.2 mm	1 5/8-12 UN-2A	1 5/8-12 UN-2A
PS2490303-24-24	5.81" 157.1 mm	4.65" 118.2 mm	3.43" 87.0 mm	3.05" 77.6 mm	4.73" 120.2 mm	2.13" 54.0 mm	2.63" 66.7 mm	3.36" 85.2 mm	1 7/8-12 UN-2A	1 7/8-12 UN-2A
PS3290303-32-32	7.44" 189.0 mm	5.51" 140.0 mm	3.93" 99.7 mm	3.70" 94.0 mm	5.80" 147.2 mm	2.75" 69.8 mm	3.06" 77.6 mm	4.19" 106.4 mm	2 1/2-12 UN-2A	2 1/2-12 UN-2A

D Swivels

Quick Coupling Division