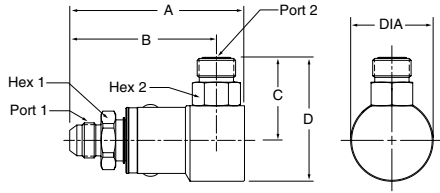


Swivels

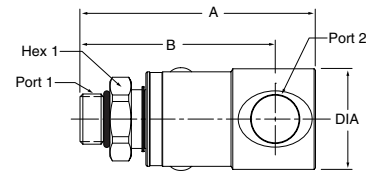
90° PS Series

Male 37° Flare - O-Ring Face Seal



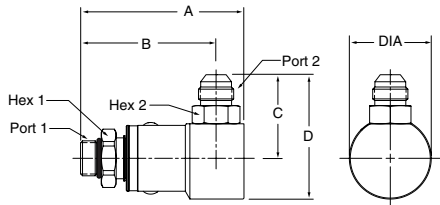
Part Number	A	B	C	D	Dia.	Hex 1	Hex 2	Port 1	Port 2
PS4903JM-4-4	3.14" 79.7 mm	2.73" 69.4 mm	1.29" 32.5 mm	1.89" 47.9 mm	1.20" 30.5 mm	.75" 19.0 mm	.56" 14.3 mm	7/16-20 UNF-2A	9/16-18 UNF-2A
PS6903JM-6-6	3.39" 86.1 mm	2.88" 73.2 mm	1.40" 35.6 mm	2.05" 52.0 mm	1.29" 32.8 mm	.88" 22.2 mm	.69" 17.5 mm	9/16-18 UNF-2A	11/16-16 UN-2A
PS8903JM-8-8	3.67" 93.2 mm	3.08" 78.2 mm	1.74" 44.1 mm	2.60" 66.1 mm	1.73" 44.0 mm	1.12" 28.6 mm	.88" 22.2 mm	3/4-16 UNF-2A	13/16-16 UN-2A
PS8903JM-10-10	3.77" 95.8 mm	3.18" 80.8 mm	1.96" 49.9 mm	2.83" 71.9 mm	1.73" 44.0 mm	1.12" 28.6 mm	.88" 22.2 mm	7/8-14 UNF-2A	1-14 UN-2A
PS12903JM-12-12	4.21" 106.8 mm	3.54" 89.8 mm	2.18" 55.4 mm	3.27" 83.0 mm	2.17" 55.2 mm	1.38" 35.0 mm	1.25" 31.8 mm	1-1/16-12 UN-2A	1-3/16-12 UN-2A
PS16903JM-16-16	4.67" 118.7 mm	3.81" 96.9 mm	2.34" 59.6 mm	3.59" 91.1 mm	2.48" 63.0 mm	1.62" 41.3 mm	1.50" 38.1 mm	1-5/16-12 UN-2A	1-7/16-12 UN-2A

Male SAE O-Ring Straight Thread - Female Pipe



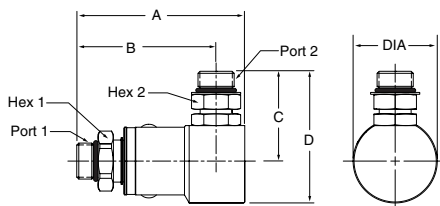
Part Number	A	B	Dia.	Hex 1	Port 1	Port 2
PS490502-4-4	2.93" 74.5 mm	2.53" 64.2 mm	1.20" 30.5 mm	.75" 19.0 mm	7/16-20 UNF-2A	1/4-18 NPTF
PS690502-6-6	3.27" 83.0 mm	2.76" 70.0 mm	1.29" 32.8 mm	.88" 22.2 mm	9/16-18 UNF-2A	3/8-18 NPTF
PS890502-8-8	3.46" 87.8 mm	2.87" 72.8 mm	1.49" 37.8 mm	1.12" 28.6 mm	3/4-16 UNF-2A	1/2-14 NPTF
PS1290502-12-12	3.94" 100.0 mm	3.27" 83.0 mm	1.76" 44.6 mm	1.38" 35.0 mm	1-1/16-12 UN-2A	3/4-14 NPTF
PS1690502-16-16	4.32" 109.8 mm	3.46" 87.9 mm	2.16" 54.9 mm	1.62" 41.3 mm	1-5/16-12 UN-2A	1-11/2 NPTF

Male SAE O-Ring Straight Thread - Male 37° Flare



Part Number	A	B	C	D	Dia.	Hex 1	Hex 2	Port 1	Port 2
PS490503-4-4	2.93" 74.5 mm	2.53" 64.2 mm	1.39" 35.2 mm	1.99" 50.5 mm	1.20" 30.5 mm	.75" 19.0 mm	.56" 14.3 mm	7/16-20 UNF-2A	7/16-20 UNF-2A
PS690503-6-6	3.27" 83.0 mm	2.76" 70.0 mm	1.44" 36.6 mm	2.09" 53.0 mm	1.29" 32.8 mm	.88" 22.2 mm	.69" 17.5 mm	9/16-18 UNF-2A	9/16-18 UNF-2A
PS890503-8-8	3.46" 87.8 mm	2.87" 72.8 mm	1.78" 45.1 mm	2.64" 67.1 mm	1.73" 44.0 mm	1.12" 28.6 mm	.88" 22.2 mm	3/4-16 UNF-2A	3/4-16 UNF-2A
PS890503-10-10	3.51" 89.2 mm	2.92" 74.2 mm	1.90" 48.4 mm	2.77" 70.4 mm	1.73" 44.0 mm	1.12" 28.6 mm	.88" 22.2 mm	7/8-14 UNF-2A	7/8-14 UNF-2A
PS1290503-12-12	3.94" 100.0 mm	3.27" 83.0 mm	2.24" 56.9 mm	3.86" 98.3 mm	2.17" 55.2 mm	1.38" 35.0 mm	1.25" 31.8 mm	1-1/16-12 UN-2A	1-1/16-12 UN-2A
PS1690503-16-16	4.32" 109.8 mm	3.46" 87.9 mm	2.42" 61.3 mm	3.66" 92.9 mm	2.48" 63.0 mm	1.62" 41.3 mm	1.50" 38.1 mm	1-5/16-12 UN-2A	1-5/16-12 UN-2A

Male SAE O-Ring Straight Thread - Male SAE O-Ring Straight Thread



Part Number	A	B	C	D	Dia.	Hex 1	Hex 2	Port 1	Port 2
PS490505-4-4	2.93" 74.5 mm	2.53" 64.2 mm	1.38" 35.0 mm	1.98" 50.2 mm	1.20" 30.5 mm	.75" 19.0 mm	.56" 14.3 mm	7/16-20 UNF-2A	7/16-20 UNF-2A
PS690505-6-6	3.27" 83.0 mm	2.76" 70.0 mm	1.55" 39.4 mm	2.20" 55.8 mm	1.29" 32.8 mm	.88" 22.2 mm	.69" 17.5 mm	9/16-18 UNF-2A	9/16-18 UNF-2A
PS890505-8-8	3.46" 87.8 mm	2.87" 72.8 mm	1.86" 47.2 mm	2.72" 69.2 mm	1.73" 44.0 mm	1.12" 28.6 mm	.88" 22.2 mm	3/4-16 UNF-2A	3/4-16 UNF-2A
PS1290505-12-12	3.94" 100.0 mm	3.27" 83.0 mm	2.40" 61.0 mm	3.49" 88.5 mm	2.17" 55.2 mm	1.38" 35.0 mm	1.25" 31.8 mm	1-1/16-12 UN-2A	1-1/16-12 UN-2A
PS1690505-16-16	4.32" 109.8 mm	3.46" 87.9 mm	2.50" 63.4 mm	3.74" 94.9 mm	2.48" 63.0 mm	1.62" 41.3 mm	1.50" 38.1 mm	1-5/16-12 UN-2A	1-5/16-12 UN-2A

D Swivels

Quick Coupling Division