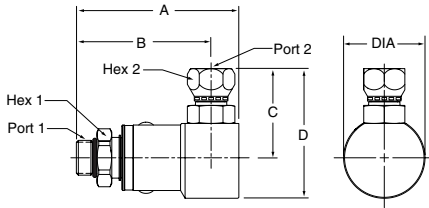
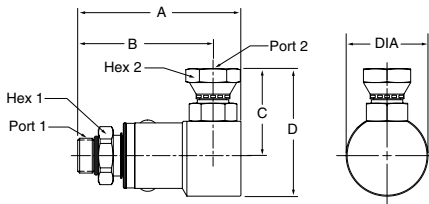


Male SAE O-Ring Straight Thread - Female 37° Flare



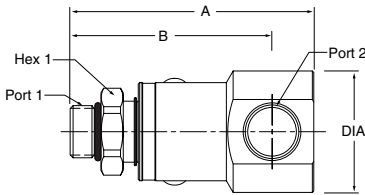
Part Number	A	B	C	D	Dia.	Hex 1	Hex 2	Port 1	Port 2
PS490506-4-4	2.93" 74.5 mm	2.53" 64.2 mm	1.47" 37.3 mm	2.07" 52.5 mm	1.20" 30.5 mm	.75" 19.0 mm	.56" 14.3 mm	7/16-20 UNF-2A	7/16-20 UNF-2B
PS690506-6-6	3.27" 83.0 mm	2.76" 70.0 mm	1.57" 39.9 mm	2.22" 56.3 mm	1.29" 32.8 mm	.88" 22.2 mm	.69" 17.5 mm	9/16-18 UNF-2A	9/16-18 UNF-2B
PS890506-8-8	3.46" 87.8 mm	2.87" 72.8 mm	1.91" 48.4 mm	2.77" 70.4 mm	1.73" 44.0 mm	1.12" 28.6 mm	.88" 22.2 mm	3/4-16 UNF-2A	3/4-16 UNF-2B
PS1290506-12-12	3.94" 100.0 mm	3.27" 83.0 mm	2.34" 59.4 mm	3.43" 87.0 mm	2.17" 55.2 mm	1.38" 35.0 mm	1.25" 31.8 mm	1-1/16-12 UN-2A	1-1/16-12 UN-2B
PS1690506-16-16	4.32" 109.8 mm	3.46" 87.9 mm	2.54" 64.6 mm	3.79" 96.2 mm	2.48" 63.0 mm	1.62" 41.3 mm	1.50" 38.1 mm	1-5/16-12 UN-2A	1-5/16-12 UN-2B

Male SAE O-Ring Straight Thread - Female NPSM Pipe Swivel



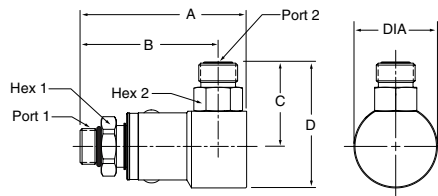
Part Number	A	B	C	D	Dia.	Hex 1	Hex 2	Port 1	Port 2
PS490507-4-4	2.93" 74.5 mm	2.53" 64.2 mm	1.48" 37.5 mm	2.08" 52.8 mm	1.20" 30.5 mm	.75" 19.0 mm	.69" 17.4 mm	7/16-20 UNF-2A	1/4-18 NPSM
PS690507-6-6	3.27" 83.0 mm	2.76" 70.0 mm	1.51" 38.4 mm	2.16" 54.8 mm	1.29" 32.8 mm	.88" 22.2 mm	.88" 22.2 mm	9/16-18 UNF-2A	3/8-18 NPSM
PS890507-8-8	3.46" 87.8 mm	2.87" 72.8 mm	1.86" 47.2 mm	2.72" 69.2 mm	1.73" 44.0 mm	1.12" 28.6 mm	1.00" 25.4 mm	3/4-16 UNF-2A	1/2-14 NPSM
PS1290507-12-12	3.94" 100.0 mm	3.27" 83.0 mm	2.24" 56.9 mm	3.33" 84.5 mm	2.17" 55.2 mm	1.38" 35.0 mm	1.25" 31.8 mm	1-1/16-12 UN-2A	3/4-14 NPSM
PS1690507-16-16	4.32" 109.8 mm	3.46" 87.9 mm	2.48" 63.1 mm	3.73" 94.6 mm	2.48" 63.0 mm	1.62" 41.3 mm	1.50" 38.1 mm	1-5/16-12 UN-2A	1-11/2 NPSM

Male SAE O-Ring Straight Thread - Female SAE Straight Thread



Part Number	A	B	Dia.	Hex 1	Port 1	Port 2
PS490510-4-4	2.93" 74.5 mm	2.53" 64.2 mm	1.20" 30.5 mm	.75" 19.0 mm	7/16-20 UNF-2A	7/16-20 UNF-2B
PS690510-6-6	3.27" 83.0 mm	2.76" 70.0 mm	1.29" 32.8 mm	.88" 22.2 mm	9/16-18 UNF-2A	9/16-18 UNF-2B
PS890510-8-8	3.46" 87.8 mm	2.87" 72.8 mm	1.73" 44.0 mm	1.12" 28.6 mm	3/4-16 UNF-2A	3/4-16 UNF-2B
PS1290510-12-12	3.94" 100.0 mm	3.27" 83.0 mm	2.17" 55.2 mm	1.38" 35.0 mm	1-1/16-12 UN-2A	1-1/16-12 UN-2B
PS1690510-16-16	4.32" 109.8 mm	3.46" 87.9 mm	2.48" 63.0 mm	1.62" 41.3 mm	1-5/16-12 UN-2A	1-5/16-12 UN-2B

Male SAE O-Ring Straight Thread - O-Ring Face Seal



Part Number	A	B	C	D	Dia.	Hex 1	Hex 2	Port 1	Port 2
PS4905JM-4-4	2.93" 74.5 mm	2.53" 64.2 mm	1.29" 32.5 mm	1.89" 47.9 mm	1.20" 30.5 mm	.75" 19.0 mm	.56" 14.3 mm	7/16-20 UNF-2A	9/16-18 UNF-2A
PS6905JM-6-6	3.27" 83.0 mm	2.76" 70.0 mm	1.40" 35.6 mm	2.05" 52.0 mm	1.29" 32.8 mm	.88" 22.2 mm	.69" 17.5 mm	9/16-18 UNF-2A	11/16-16 UN-2A
PS8905JM-8-8	3.46" 87.8 mm	2.87" 72.8 mm	1.74" 44.1 mm	2.60" 66.1 mm	1.73" 44.0 mm	1.12" 28.6 mm	.88" 22.2 mm	3/4-16 UNF-2A	13/16-16 UN-2A
PS8905JM-10-10	3.51" 89.2 mm	2.92" 74.2 mm	1.96" 49.9 mm	2.83" 71.9 mm	1.73" 44.0 mm	1.12" 28.6 mm	.88" 22.2 mm	7/8-14 UNF-2A	1-14 UN-2A
PS12905JM-12-12	3.94" 100.0 mm	3.27" 83.0 mm	2.18" 55.4 mm	3.27" 83.0 mm	2.17" 55.2 mm	1.38" 35.0 mm	1.25" 31.8 mm	1-1/16-12 UN-2A	1-3/16-12 UN-2A
PS16905JM-16-16	4.32" 109.8 mm	3.46" 87.9 mm	2.34" 59.6 mm	3.59" 91.1 mm	2.48" 63.0 mm	1.62" 41.3 mm	1.50" 38.1 mm	1-5/16-12 UN-2A	1-7/16-12 UN-2A