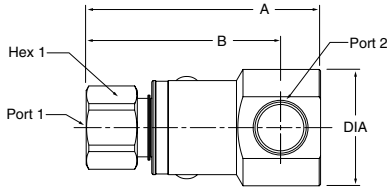
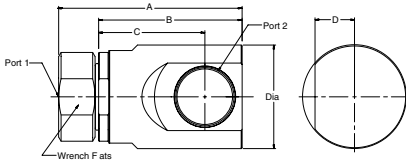


Female SAE Straight Thread - Female SAE Straight Thread



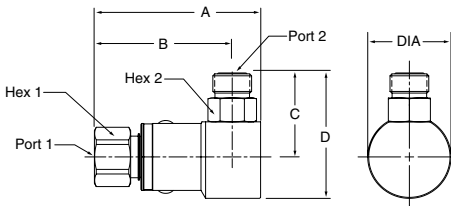
3 Piece Design



Part Number	A	B	Dia.	Hex 1	Port 1	Port 2
PS491010-4-4	2.87" 72.8 mm	2.46" 62.5 mm	1.20" 30.5 mm	.75" 19.0 mm	7/16-20 UNF-2B	7/16-20 UNF-2B
PS691010-6-6	3.19" 80.9 mm	2.68" 68.0 mm	1.29" 32.8 mm	.88" 22.2 mm	9/16-18 UNF-2B	9/16-18 UNF-2B
PS891010-8-8	3.46" 87.8 mm	2.87" 72.8 mm	1.73" 44.0 mm	1.12" 28.6 mm	3/4-16 UNF-2B	3/4-16 UNF-2B
PS1291010-12-12	4.04" 102.6 mm	3.37" 85.6 mm	2.17" 55.2 mm	1.38" 35.0 mm	1-1/16-12 UN-2B	1-1/16-12 UN-2B
PS1691010-16-16	4.45" 113.0 mm	3.58" 91.0 mm	2.48" 63.0 mm	1.62" 41.3 mm	1-5/16-12 UN-2B	1-5/16-12 UN-2B

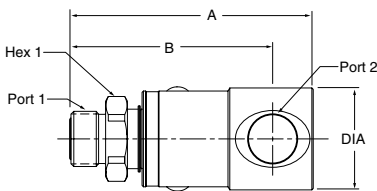
Part Number	A	B	C	D	Wrench Flats	Dia.	Port 1	Port 2
PS2491010-20-20	5.91" 150.2 mm	4.63" 117.5 mm	3.43" 87.0 mm	1.27" 32.3 mm	2.63" 66.7 mm	3.36" 85.2 mm	1 5/8-12 UN-2B	1 5/8-12 UN-2B
PS2491010-24-24	5.91" 150.2 mm	4.63" 117.5 mm	3.43" 87.0 mm	1.27" 32.3 mm	2.63" 66.7 mm	3.36" 85.2 mm	1 7/8-12 UN-2B	1 7/8-12 UN-2B
PS3291010-32-32	6.83" 179.8 mm	5.45" 138.4 mm	3.93" 99.7 mm	1.52" 38.5 mm	3.06" 77.6 mm	4.19" 106.4 mm	2 1/16-12 UN-2B	2 1/2-12 UN-2B

Female SAE Straight Thread - O-Ring Face Seal



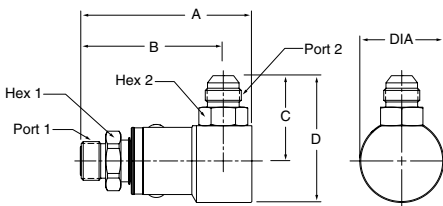
Part Number	A	B	C	D	Dia.	Hex 1	Hex 2	Port 1	Port 2
PS4910JM-4-4	2.87" 72.8 mm	2.46" 62.5 mm	1.29" 32.5 mm	1.89" 47.9 mm	1.20" 30.5 mm	.75" 19.0 mm	.56" 14.3 mm	7/16-20 UNF-2B	9/16-18 UNF-2A
PS6910JM-6-6	3.19" 80.9 mm	2.68" 68.0 mm	1.40" 35.6 mm	2.05" 52.0 mm	1.29" 32.8 mm	.88" 22.2 mm	.69" 17.5 mm	9/16-18 UNF-2B	11/16-16 UNF-2A
PS8910JM-8-8	3.46" 87.8 mm	2.87" 72.8 mm	1.74" 44.1 mm	2.60" 66.1 mm	1.73" 44.0 mm	1.12" 28.6 mm	.88" 22.2 mm	3/4-16 UNF-2B	13/16-16 UN-2A
PS12910JM-12-12	4.04" 102.6 mm	3.37" 85.6 mm	2.18" 55.4 mm	3.27" 83.0 mm	2.17" 55.2 mm	1.38" 35.0 mm	1.25" 31.8 mm	1-1/16-12 UN-2B	1-3/16-12 UN-2A
PS16910JM-16-16	4.45" 113.0 mm	3.58" 91.0 mm	2.34" 59.6 mm	3.59" 91.1 mm	2.48" 63.0 mm	1.62" 41.3 mm	1.50" 38.1 mm	1-5/16-12 UN-2B	1-7/16-12 UN-2A

O-Ring Face Seal - Female Pipe



Part Number	A	B	Dia.	Hex 1	Port 1	Port 2
PS49JM02-4-4	2.99" 76.0 mm	2.59" 65.7 mm	1.20" 30.5 mm	.75" 19.0 mm	9/16-18 UNF-2A	1/4-18 NPTF
PS69JM02-6-6	3.27" 83.0 mm	2.76" 70.0 mm	1.29" 32.8 mm	.88" 22.2 mm	11/16-16 UN-2A	3/8-18 NPTF
PS89JM02-8-8	3.52" 89.5 mm	2.93" 74.5 mm	1.49" 37.8 mm	1.12" 28.6 mm	13/16-16 UN-2A	1/2-14 NPTF
PS129JM02-12-12	4.04" 102.6 mm	3.37" 85.6 mm	1.76" 44.6 mm	1.38" 35.0 mm	1-3/16-12 UN-2A	3/4-14 NPTF
PS169JM02-16-16	4.45" 113.0 mm	3.58" 91.0 mm	2.16" 54.9 mm	1.62" 41.3 mm	1-7/16-12 UN-2A	1-11/16-12 NPTF

O-Ring Face Seal - Male 37° Flare



Part Number	A	B	C	D	Dia.	Hex 1	Hex 2	Port 1	Port 2
PS49JM03-4-4	2.99" 76.0 mm	2.59" 65.7 mm	1.39" 35.2 mm	1.99" 50.5 mm	1.20" 30.5 mm	.75" 19.0 mm	.56" 14.3 mm	9/16-18 UNF-2A	7/16-20 UNF-2A
PS69JM03-6-6	3.27" 83.0 mm	2.76" 70.0 mm	1.44" 36.6 mm	2.09" 53.0 mm	1.29" 32.8 mm	.88" 22.2 mm	.69" 17.5 mm	11/16-16 UN-2A	9/16-18 UNF-2A
PS89JM03-8-8	3.52" 89.5 mm	2.93" 74.5 mm	1.78" 45.1 mm	2.64" 67.1 mm	1.73" 44.0 mm	1.12" 28.6 mm	.88" 22.2 mm	13/16-16 UN-2A	3/4-16 UNF-2A
PS89JM03-10-10	3.62" 92.0 mm	3.03" 77.0 mm	1.90" 48.4 mm	2.77" 70.4 mm	1.73" 44.0 mm	1.12" 28.6 mm	.88" 22.2 mm	7/8-14 UN-2A	7/8-14 UNF-2A
PS129JM03-12-12	4.04" 102.6 mm	3.37" 85.6 mm	2.24" 56.9 mm	3.86" 85.3 mm	2.17" 55.2 mm	1.38" 35.0 mm	1.25" 31.8 mm	1-3/16-12 UN-2A	1-1/16-12 UN-2A
PS169JM03-16-16	4.45" 113.0 mm	3.58" 91.0 mm	2.42" 61.3 mm	3.66" 92.9 mm	2.48" 63.0 mm	1.62" 41.3 mm	1.50" 38.1 mm	1-7/16-12 UN-2A	1-5/16-12 UN-2A