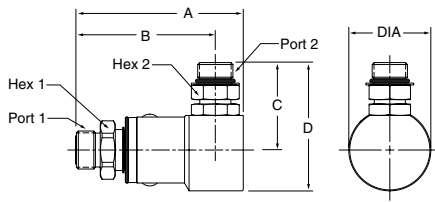


Swivels

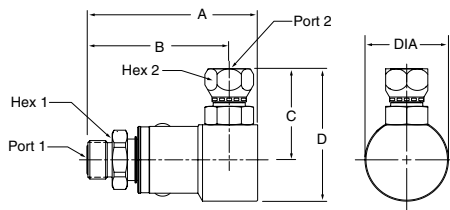
90° PS Series

O-Ring Face Seal - Male SAE O-Ring Straight Thread



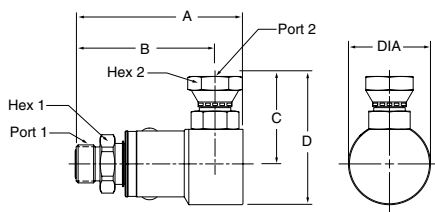
Part Number	A	B	C	D	Dia.	Hex 1	Hex 2	Port 1	Port 2
PS49JM05-4-4	2.99" 76.0 mm	2.59" 65.7 mm	1.38" 35.0 mm	1.98" 50.2 mm	1.20" 30.5 mm	.75" 19.0 mm	.56" 14.3 mm	9/16-18 UNF-2A	7/16-20 UNF-2A
PS69JM05-6-6	3.27" 83.0 mm	2.76" 70.0 mm	1.55" 39.4 mm	2.20" 55.8 mm	1.29" 32.8 mm	.88" 22.2 mm	.69" 17.5 mm	11/16-16 UN-2A	9/16-18 UNF-2A
PS89JM05-8-8	3.52" 89.5 mm	2.93" 74.5 mm	1.86" 47.2 mm	2.72" 69.2 mm	1.73" 44.0 mm	1.12" 28.6 mm	.88" 22.2 mm	13/16-16 UN-2A	3/4-16 UNF-2A
PS129JM05-12-12	4.04" 102.6 mm	3.37" 85.6 mm	2.40" 61.0 mm	3.49" 88.5 mm	2.17" 55.2 mm	1.38" 35.0 mm	1.25" 31.8 mm	1-3/16-12 UN-2A	1-1/16-12 UN-2A
PS169JM05-16-16	4.45" 113.0 mm	3.58" 91.0 mm	2.50" 63.4 mm	3.74" 94.9 mm	2.48" 63.0 mm	1.62" 41.3 mm	1.50" 38.1 mm	1-7/16-12 UN-2A	1-5/16-12 UN-2A

O-Ring Face Seal - Female 37° Flare



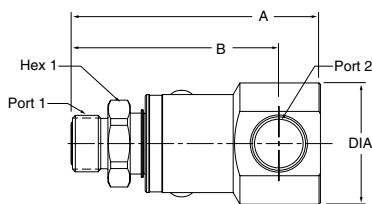
Part Number	A	B	C	D	Dia.	Hex 1	Hex 2	Port 1	Port 2
PS49JM06-4-4	2.99" 76.0 mm	2.59" 65.7 mm	1.47" 37.3 mm	2.07" 52.5 mm	1.20" 30.5 mm	.75" 19.0 mm	.56" 14.3 mm	9/16-18 UNF-2A	7/16-20 UNF-2A
PS69JM06-6-6	3.27" 83.0 mm	2.76" 70.0 mm	1.57" 39.9 mm	2.22" 56.3 mm	1.29" 32.8 mm	.88" 22.2 mm	.69" 17.5 mm	11/16-16 UN-2A	9/16-18 UNF-2A
PS89JM06-8-8	3.52" 89.5 mm	2.93" 74.5 mm	1.91" 48.4 mm	2.77" 70.4 mm	1.73" 44.0 mm	1.12" 28.6 mm	.88" 22.2 mm	13/16-16 UN-2A	3/4-16 UNF-2A
PS129JM06-12-12	4.04" 102.6 mm	3.37" 85.6 mm	2.34" 59.4 mm	3.43" 87.0 mm	2.17" 55.2 mm	1.38" 35.0 mm	1.25" 31.8 mm	1-3/16-12 UN-2A	1-1/16-12 UN-2B
PS169JM06-16-16	4.45" 113.0 mm	3.58" 91.0 mm	2.54" 64.6 mm	3.79" 96.2 mm	2.48" 63.0 mm	1.62" 41.3 mm	1.50" 38.1 mm	1-7/16-12 UN-2A	1-5/16-12 UN-2B

O-Ring Face Seal - Female NPSM Pipe Swivel



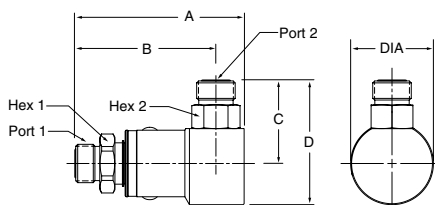
Part Number	A	B	C	D	Dia.	Hex 1	Hex 2	Port 1	Port 2
PS49JM07-4-4	2.99" 76.0 mm	2.59" 65.7 mm	1.48" 37.5 mm	2.08" 52.8 mm	1.20" 30.5 mm	.75" 19.0 mm	.69" 17.4 mm	9/16-18 UNF-2A	1/4-18 NPSM
PS69JM07-6-6	3.27" 83.0 mm	2.76" 70.0 mm	1.51" 38.4 mm	2.16" 54.8 mm	1.29" 32.8 mm	.88" 22.2 mm	.88" 22.2 mm	11/16-16 UN-2A	3/8-18 NPSM
PS89JM07-8-8	3.52" 89.5 mm	2.93" 74.5 mm	1.86" 47.2 mm	2.72" 69.2 mm	1.73" 44.0 mm	1.12" 28.6 mm	1.00" 25.4 mm	13/16-16 UN-2A	1/2-14 NPSM
PS129JM07-12-12	4.04" 102.6 mm	3.37" 85.6 mm	2.24" 56.9 mm	3.33" 84.5 mm	2.17" 55.2 mm	1.38" 35.0 mm	1.25" 31.8 mm	1-3/16-12 UN-2A	3/4-14 NPSM
PS169JM07-16-16	4.45" 113.0 mm	3.58" 91.0 mm	2.48" 63.1 mm	3.73" 94.6 mm	2.48" 63.0 mm	1.62" 41.3 mm	1.50" 38.1 mm	1-7/16-12 UN-2A	1-11/2 NPSM

O-Ring Face Seal - Female SAE Straight Thread



Part Number	A	B	Dia.	Hex 1	Port 1	Port 2
PS49JM10-4-4	2.99" 76.0 mm	2.59" 65.7 mm	1.20" 30.5 mm	.75" 19.0 mm	9/16-18 UNF-2A	7/16-20 UNF-2B
PS69JM10-6-6	3.27" 83.0 mm	2.76" 70.0 mm	1.29" 32.8 mm	.88" 22.2 mm	11/16-16 UN-2A	9/16-18 UNF-2B
PS89JM10-8-8	3.52" 89.5 mm	2.93" 74.5 mm	1.73" 44.0 mm	1.12" 28.6 mm	13/16-16 UN-2A	3/4-16 UNF-2B
PS129JM10-12-12	4.04" 102.6 mm	3.37" 85.6 mm	2.17" 55.2 mm	1.38" 35.0 mm	1-3/16-12 UN-2A	1-1/16-12 UN-2B
PS169JM10-16-16	4.45" 113.0 mm	3.58" 91.0 mm	2.48" 63.0 mm	1.62" 41.3 mm	1-7/16-12 UN-2A	1-5/16-12 UN-2B

O-Ring Face Seal - O-Ring Face Seal



Part Number	A	B	C	D	Dia.	Hex 1	Hex 2	Port 1	Port 2
PS49JMJM-4-4	2.99" 76.0 mm	2.59" 65.7 mm	1.29" 32.5 mm	1.89" 47.9 mm	1.20" 30.5 mm	.75" 19.0 mm	.56" 14.3 mm	9/16-18 UNF-2A	9/16-18 UNF-2A
PS69JMJM-6-6	3.27" 83.0 mm	2.76" 70.0 mm	1.40" 35.6 mm	2.05" 52.0 mm	1.29" 32.8 mm	.88" 22.2 mm	.69" 17.5 mm	11/16-16 UN-2A	11/16-16 UN-2A
PS89JMJM-8-8	3.52" 89.5 mm	2.93" 74.5 mm	1.74" 44.1 mm	2.60" 66.1 mm	1.73" 44.0 mm	1.12" 28.6 mm	.88" 22.2 mm	13/16-16 UN-2A	13/16-16 UN-2A
PS89JMJM-10-10	3.62" 92.0 mm	3.03" 77.0 mm	1.96" 49.9 mm	2.83" 71.9 mm	1.73" 44.0 mm	1.12" 28.6 mm	.88" 22.2 mm	1-14 UN-2A	1-14 UN-2A
PS129JMJM-12-12	4.04" 102.6 mm	3.37" 85.6 mm	2.18" 55.4 mm	3.27" 83.0 mm	2.17" 55.2 mm	1.38" 35.0 mm	1.25" 31.8 mm	1-3/16-12 UN-2A	1-3/16-12 UN-2A
PS169JMJM-16-16	4.45" 113.0 mm	3.58" 91.0 mm	2.34" 59.6 mm	3.59" 91.1 mm	2.48" 63.0 mm	1.62" 41.3 mm	1.50" 38.1 mm	1-7/16-12 UN-2A	1-7/16-12 UN-2A

Quick Coupling Division