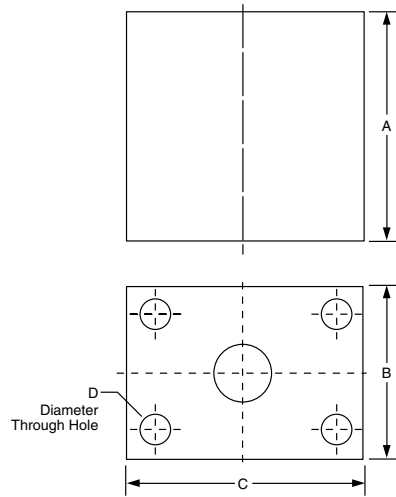


CF Series

Check Valves

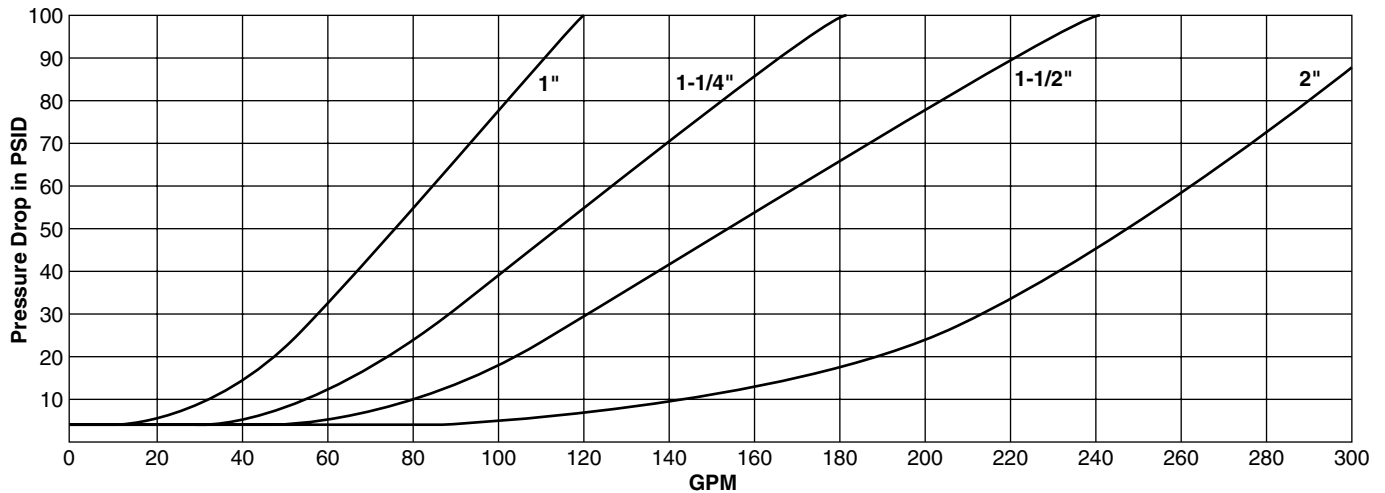
Specifications



Part Number	Nominal Size	A	B	C	D	Net Weight	Maximum Operating Pressure	Crack Pressure Range
CF-1000-*	1"	3.00	2.25	3.25	0.41	2.5 KG	3000 PSI	5-80 PSI
CF-1250-*	1-1/4"	3.00	2.25	3.25	0.47	2.3 KG	3000 PSI	5-80 PSI
CF-1500-*	1-1/2"	3.00	3.00	4.00	0.53	5.2KG	3000 PSI	5-65 PSI
CF-2000-*	2"	4.00	3.00	4.00	0.53	4.9 KG	3000 PSI	5-65 PSI

*Designate crack pressure in 5 PSI increments. (Not to exceed maximum crack pressure range.),

Flow Data



Check Valves

Ordering Information CF Series

CF - * * * - * *

Standard Crack Pressure is 5 PSI.
Designate in 5 PSI increments.
Not to exceed Crack Pressure Range
for designated size.
Example: 5 = 5 PSI, 10 = 10 PSI.

SERIES	SIZE
1000	1"
1250	1-1/4"
1500	1-1/2"
2000	2"

Quick Coupling Division