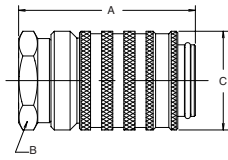


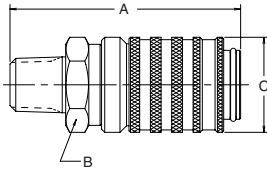
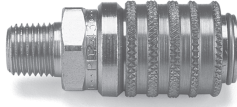
Couplers

Female Thread



Body Size (in.)	Part No.	Female Thread NPTF	Female Thread ORB	Dimensions (in.)			Wt. (LB.) P/Piece
				Overall Length	Wrench Flats	Largest Diameter	
				A	B	C	
1/8	PD222	1/8-27	-	1.67	0.81	0.96	0.20
1/8	PD240	-	7/16-20	2.12	0.81	0.96	0.26
1/8	PD242	1/4-18	-	2.12	0.81	0.96	0.25
1/8	SSPD242Y**	1/4-18	-	2.12	0.81	0.96	0.25
1/8	PD260	-	9/16-18	2.12	0.81	0.96	0.24

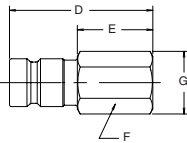
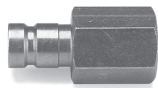
Male Thread



Body Size (in.)	Part No.	Male Thread NPTF	Male Thread ORB	Dimensions (in.)			Wt. (LB.) P/Piece
				Overall Length	Wrench Flats	Largest Diameter	
				A	B	C	
1/8	PD243	1/4-18	-	2.26	0.81	0.96	0.23

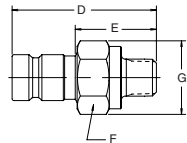
Nipples

Female Pipe Thread



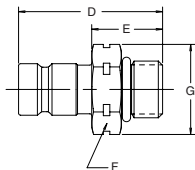
Body Size (in.)	Part No.	Thread Size NPTF	Overall Length	Exposed Length	Dimensions (in.)			Wt. (LB.) P/Piece
					Hex Size	Largest Diameter		
				D	E	F	G	
1/8	PD322	1/8-27	1.48	0.78	0.56	0.65	0.06	
1/8	PD342	1/4-18	1.63	0.93	0.75	0.87	0.12	

Male Pipe Thread



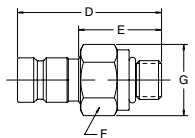
Body Size (in.)	Part No.	Thread Size NPTF	Overall Length	Exposed Length	Dimensions (in.)			Wt. (LB.) P/Piece
					Hex Size	Largest Diameter		
				D	E	F	G	
1/8	PD323	1/8-27	1.55	0.85	0.69	0.79	0.17	
1/8	BPD323Y*	1/8-27	1.44	0.74	0.63	0.72	0.17	
1/8	BPD343Y*	1/4-18	1.48	0.78	0.69	0.79	0.06	
1/8	PD343	1/4-18	1.48	0.78	0.69	0.79	0.06	
1/8	SSPD343Y**	1/4-18	1.48	0.78	0.69	0.79	0.06	
1/8	PD363	3/8-18	1.50	1.13	0.81	0.96	0.09	

Metric Thread



Body Size (in.s)	Part No.	Thread Size Metric	Overall Length	Exposed Length	Dimensions (in.)			Wt. (LB.) P/Piece
					Hex Size	Largest Diameter		
				D	E	F	G	
1/8	PD357	M10 x 1.0	1.80	1.10	0.69	0.79	0.17	
1/8	PD367A	M14 x 1.5	1.38	0.68	0.75	0.87	0.07	
1/8	PD3107	M16 x 1.5	1.54	0.84	0.88	1.01	0.08	
1/8	PD3127	M18 x 1.5	1.60	0.90	0.94	1.08	0.09	
1/8	PD3147	M20 x 1.5	1.50	0.80	0.75	0.87	0.07	

Male Straight Thread



Body Size (in.)	Part* No.	Thread Size ORB	Overall Length	Exposed Length	Dimensions (in.)			Wt. (LB.) P/Piece
					Hex Size	Largest Diameter		
				D	E	F	G	
1/8	PD331	3/8-24	1.80	1.10	0.69	0.79	0.17	
1/8	PD341	7/16-20	1.60	0.90	0.69	0.79	0.08	
1/8	PD351	1/2-20	1.32	0.62	0.63	0.72	0.05	
1/8	PD361	9/16-18	1.32	0.62	0.69	0.79	0.06	

* Note: Add -6 to part number to include dust cap, for example PD343-6

* BPD designates brass body, Fluorocarbon seal standard

** SSPD designates 316SS body, Fluorocarbon seal standard

F Diagnostic