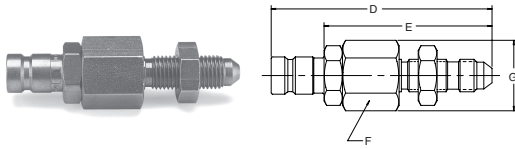


Diagnostic Products

Test Port Couplings PD Series

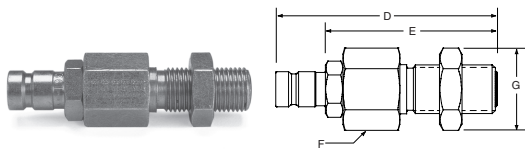
Nipples

Bulkhead Triple-Lok



Body Size (in.)	Part No. Steel	Thread Size	Tube Size	Overall Length	Dimensions (in.)			
					Exposed Length	Hex Size	Largest Diameter	Wt. (LB.) P/Piece
				D	E	F	G	
1/8	PD345	7/16-20	1/4	2.92	2.22	0.81	0.94	0.19
1/8	PD355	1/2-20	5/16	2.92	2.22	0.81	0.94	0.19
1/8	PD365	9/16-18	3/8	3.00	2.30	0.81	0.94	0.20

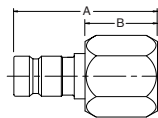
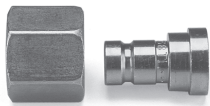
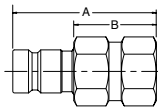
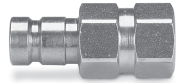
Bulkhead Seal-Lok



Body Size (in.)	Part No. Steel	Thread Size	Tube Size	Overall Length	Dimensions (in.)			
					Exposed Length	Hex Size	Largest Diameter	Wt. (LB.) P/Piece
				D	E	F	G	
1/8	PD346	9/16-18	1/4	2.98	2.27	0.81	0.94	—
1/8	PD366	11/16-16	3/8	3.08	2.37	1.00	1.16	—
1/8	PD386	13/16-16	1/2	3.18	2.47	1.12	1.30	—

Tube End Nipples*

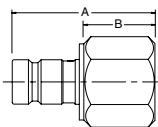
Triple-Lok PD — — BTX



Body Size (in.)	Part No. Steel	Tube Size	Dimensions (in.)		Wt. (LB.) P/Piece
			Overall Length	Exposed Length	
		A	B		
1/8	PD34BTX	1/4	1.64	0.94	0.10
1/8	PD36BTX	3/8	1.66	0.96	0.09
		A	B		
1/8	PD38BTX	1/2	1.17	0.47	0.12
1/8	PD312BTX	3/4	1.39	0.69	0.27

* Tube end nipples are designed to meet the performance standards of the tube or hose fitting connection, which may or may not meet SAE J1502 Standards.

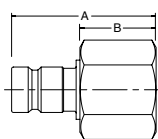
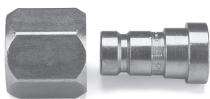
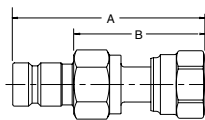
Ferulok PD — — BTU



Body Size (in.)	Part No. Steel	Tube Size	Dimensions (in.)		Wt. (LB.) P/Piece
			Overall Length	Exposed Length	
		A	B		
1/8	PD38BTU	1/2	1.40	0.70	—

* Tube end nipples are designed to meet the performance standards of the tube or hose fitting connection, which may or may not meet SAE J1502 Standards.

Seal-Lok PD — — BTL



Body Size (in.)	Part No. Steel	Tube Size	Dimensions (in.)		Wt. (LB.) P/Piece
			Overall Length	Exposed Length	
		A	B		
1/8	PD34BTL	1/4	2.18	1.48	0.12
1/8	PD36BTL	3/8	2.30	1.60	0.14
		A	B		
1/8	PD38BTL	1/2	1.12	0.42	0.13
1/8	PD310BTL	5/8	1.16	0.46	0.19

* Tube end nipples are designed to meet the performance standards of the tube or hose fitting connection, which may or may not meet SAE J1502 Standards.

Note: Add -6 to part number to include dust cap, for example PD343-6

Quick Coupling Division