

# WEBSTONE HEATING VALVES



Webstone heating valves provide you with a variety of solutions for plumbing radiant, steam and hydronic heating systems by both gas and fossil fuels. Many of the innovations that you will find throughout this catalog are designed, patented and sold exclusively by Webstone. When you choose a Webstone valve you are not only choosing one of the finest products available, you also receive peace of mind with a lifetime warranty compliments of our exclusive Web Warranty (contact Webstone for complete details).

Please visit our easy reference index on page 27 to find exactly what you are looking for by material, connection type, description, or part number.

The name Webstone assures you that you will not find a better product at any price.

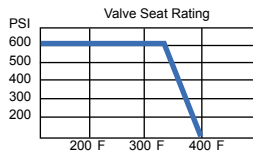
## 5865 SERIES & 5866 SERIES PRIMARY/SECONDARY LOOP FULL PORT MANIFOLD BALL VALVE WITH REVERSIBLE HANDLE CxC - (600 WOG/150 WSP) - ISO 9001



Designed for residential and commercial use in hydronic heating systems. This unique design allows for easy "power purging" of looped system while controlling "ghost flow" when the injection or circulator pump is off and when either the boiler pump or system pump is on. This approved Webstone manifold valve utilizes a hard chrome plated solid brass ball actuated by a blowout proof stem sealed all around by Teflon® seats and seals and reinforced with an adjustable packing gland.



**Isolating, Purging, and Maintaining a hydronic system made easy.**



all Teflon® seated valves  
\*Maximum Temperature is 400°F @ 100 PSI\*

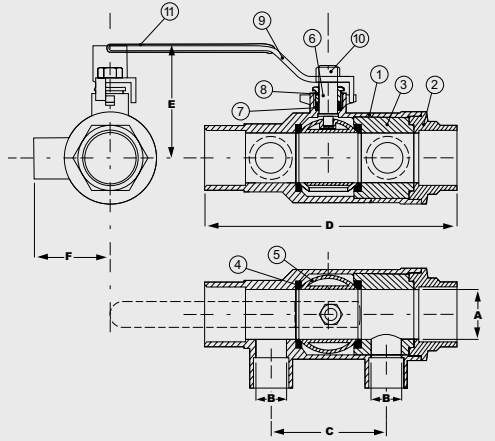
**PRESSURE RATING**

600 WOG non-shock  
150 WSP

1. Solder ends comply with ANSI B16.18
2. Teflon® seats withstand temperatures from -40°F to 400°F
3. Manufactured in an ISO 9001 Facility

Pro-Pal® is a registered trademark of Webstone Company Inc.  
Teflon® is a registered trademark of Dupont.

|     |               |                                 |
|-----|---------------|---------------------------------|
| 1.  | BODY          | FORGED BRASS (ASTM B124-C37700) |
| 2.  | END CAP       | FORGED BRASS (ASTM B283-C37700) |
| 3.  | SEAT RETAINER | BRASS (ASTM B124-C37700)        |
| 4.  | SEATS         | TEFLON® (PTFE)                  |
| 5.  | BALL          | BRASS / HARD CHROME PLATE       |
| 6.  | STEM          | BRASS (ASTM B124-C37700)        |
| 7.  | STEM SEAL     | TEFLON® (PTFE)                  |
| 8.  | PACKING GLAND | BRASS (ASTM B124-C37700)        |
| 9.  | LEVER HANDLE  | C.P. STEEL                      |
| 10. | HANDLE NUT    | C.P. STEEL                      |
| 11. | HANDLE JACKET | VINYL GRIP                      |



| ITEM  | SIZE          | CTNCS | A     | B     | C       | D       | E     | F       | Cv     |
|-------|---------------|-------|-------|-------|---------|---------|-------|---------|--------|
| 58652 | 1 1/4 x 1/2   | 1/12  | 1 1/4 | 1/2   | 2 5/8   | 5 3/4   | 2 5/8 | 1 5/8   | 130.02 |
| 58653 | 1 1/4 x 3/4   | 1/12  | 1 1/4 | 3/4   | 2 7/8   | 6 5/16  | 2 5/8 | 1 13/16 | 130.02 |
| 58654 | 1 1/4 x 1     | 1/12  | 1 1/4 | 1     | 3 1/8   | 6 11/16 | 2 3/4 | 2       | 130.02 |
| 58655 | 1 1/4 x 1 1/4 | 1/12  | 1 1/4 | 1 1/4 | 3 1/4   | 7 7/16  | 2 5/8 | 1 7/8   | 130.02 |
| 58662 | 1 1/2 x 1/2   | 1/12  | 1 1/2 | 1/2   | 2 15/16 | 6 3/4   | 2 3/4 | 1 15/16 | 189.36 |
| 58663 | 1 1/2 x 3/4   | 1/12  | 1 1/2 | 3/4   | 3 1/8   | 6 13/16 | 2 3/4 | 2 1/16  | 189.36 |
| 58664 | 1 1/2 x 1     | 1/12  | 1 1/2 | 1     | 3 3/8   | 7 1/16  | 2 3/4 | 2 1/4   | 189.36 |
| 58665 | 1 1/2 x 1 1/4 | 1/12  | 1 1/2 | 1 1/4 | 3 5/8   | 7 1/2   | 2 5/8 | 2 1/4   | 189.36 |

Sizes are Primary Loop x Secondary Loop

**THIS SPACE FOR DESIGNER / ENGINEER APPROVAL**

Job/Customer \_\_\_\_\_ Date \_\_\_\_\_ Contractor \_\_\_\_\_

Model Specified \_\_\_\_\_ Qty \_\_\_\_\_ Approved By \_\_\_\_\_

Designer/Engineer \_\_\_\_\_ Date \_\_\_\_\_ Contractor's PO # \_\_\_\_\_

Submitted by \_\_\_\_\_ Date \_\_\_\_\_ Other \_\_\_\_\_



**Call Toll Free: 1-866-711-4673**  
WebSales@GoodyearRubberProducts.com

**We Ship World Wide**