



discharge flanges	part number	weight (lbs.)	list price
3" Flange Ball/Male Discharge	010 F3M	8.60	107.10
4" Flange Ball/Male Discharge	010 F4M	14.10	158.78
6" Flange Ball/Male Discharge	010 F6M	24.20	297.28
8" Flange Ball/Male Discharge	010 F8M	34.20	466.66

All flanges are designed to ASA 150 series hole specifications.

suction flanges	part number	weight (lbs.)	list price
3" Flange Socket/Fem Suction	030 F3F	5.50	83.57
4" Flange Socket/Fem Suction	030 F4F	8.95	110.42
6" Flange Socket/Fem Suction	030 F6F	13.20	206.77
8" Flange Socket/Fem Suction	030 F8F	20.90	313.71

All flanges are designed to ASA 150 series hole specifications.

neoprene gaskets	part number	weight (lbs.)	list price
3" Flange Gasket Neoprene	288 FGN3	0.20	5.00
4" Flange Gasket Neoprene	288 FGN4	0.30	8.00
6" Flange Gasket Neoprene	288 FGN6	0.35	12.00
8" Flange Gasket Neoprene	288 FGN8	0.35	16.50
10" Flange Gasket Neoprene	289 FGN10	0.50	21.60
12" Flange Gasket Neoprene	289 FGN12	0.65	30.00

1/4" thickness / full faced

increasing flanges	part number	weight (lbs.)	list price
4" Flange x 6" Male	033 F4-6M	14.00	269.67
6" Flange x 8" Male	033 F6-8M	49.75	408.81
4" Flange x 6" Female	032 F4-6F	24.75	144.95
6" Flange x 8" Female	032 F6-8F	19.00	213.07

All flanges are designed to ASA 150 series hole specifications.

reducing flanges	part number	weight (lbs.)	list price
6" Flange x 4" Male	033 F6-4M	21.25	239.77
8" Flange x 6" Male	033 F8-6M	41.75	362.91
6" Flange x 4" Female	032 F6-4F	12.00	148.07
8" Flange x 6" Female	032 F8-6F	20.00	215.55

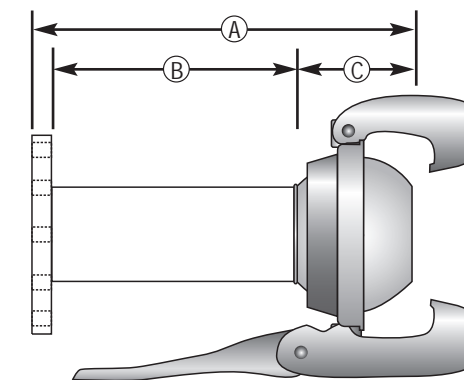
All flanges are designed to ASA 150 series hole specifications.

## Wil-loc Flanges

vacuum	30 inches hg
flange pattern	ASA 150
number of holes	3" has 4 bolt holes 4 - 8" has 8 bolt holes
pressure rating	3" = 290 psi, 4 - 8" = 175 psi

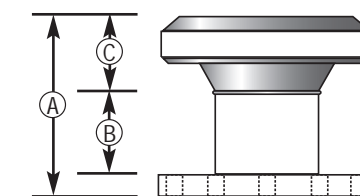
male flange specs.	A	B	C
3" Male Flange	10.00	6.50	2.88
4" Male Flange	11.88	7.00	3.50
6" Male Flange	13.63	9.00	4.00
8" Male Flange	15.63	9.88	5.25

Specifications to 1/8th of an inch &amp; Subject to Change



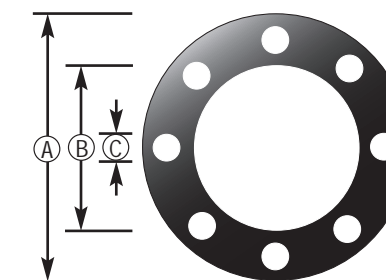
female flange specs.	A	B	C
3" Female Flange	4.63	2.75	1.38
4" Female Flange	6.50	4.00	2.25
6" Female Flange	6.50	4.00	2.25
8" Female Flange	7.75	4.00	3.25

Specifications to 1/8th of an inch &amp; Subject to Change



ASA flange specs.	A	B	C
3" ASA 150 Flange	7.50	6.00	0.75
4" ASA 150 Flange	9.00	7.50	0.75
6" ASA 150 Flange	11.00	9.50	0.875
8" ASA 150 Flange	13.50	11.95	0.875

Specifications to 1/8th of an inch &amp; Subject to Change



## Tech Tip

Wil-loc Flange Fittings are manufactured to ASA 150 pattern specifications. Gaskets should be used when mounting the flange fittings to a pump. If your pumps require other flange types or