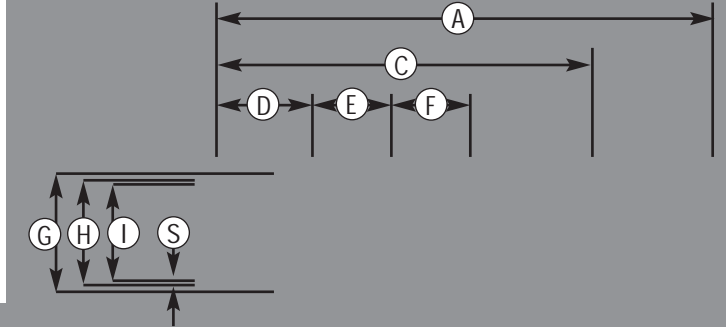


Wil-loc Stainless Steel Male Hose Tails

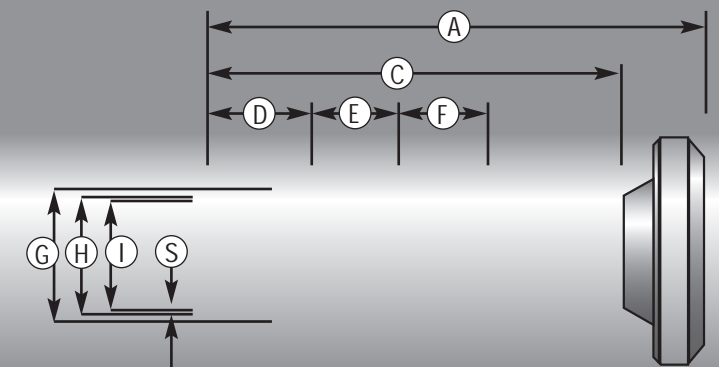
vacuum rating	30 inches hg
psi rating	2 & 3 inch = 290 4 - 8 inch = 175
number of ribs	2 & 3 inch = 2 4 - 8 inch = 3
metallurgy	304: standard 316: optional



Hose Set Specifications to 1/100th of an inch • Specifications Subject to Change

Wil-loc Stainless Steel Female Hose Tails

vacuum rating	30 inches hg
psi rating	2 & 3 inch = 290 4 - 8 inch = 175
number of ribs	2 & 3 inch = 2 4 - 8 inch = 3
metallurgy	304: standard 316: optional



female mechanical specs.	A	C	D	E	F	G	H	I	S
2" 50x50mm	5.51	4.33	0.98	1.38		2.09	1.97	1.85	0.06
3" 76x76mm	6.69	5.31	1.38	1.38		3.11	2.99	2.87	0.06
4" 108x100mm	9.45	7.28	1.38	1.77	1.77	4.09	3.94	3.80	0.07
5" 133x125mm	10.04	7.87	1.38	1.77	1.77	5.08	4.92	4.78	0.07
6" 159x150mm	10.43	8.46	1.57	1.97	1.97	6.06	5.77	5.76	0.07
8" 194x200mm	12.99	9.84	1.97	2.36	2.36	8.11	7.71	7.72	0.08

Hose Set Specifications to 1/100th of an inch • Specifications Subject to Change



Call Toll Free: 1-866-711-4673
WebSales@GoodyearRubberProducts.com

**We Ship
World Wide**